



**RADIAL BOND LOG
GAMMA RAY
CCL / VDL / MAP**

Company CHEVRON
Well SATER C25-79HN
Field WATTENBERG - 90750
County WELD
State COLORADO
Country WELD

Company CHEVRON
Well SATER C25-79HN
Field WATTENBERG - 90750
County WELD
State COLORADO
Country WELD

Location: AP1 #: 05-123-33441-00
Otr. Qtr. SESE
SEC 23 TWP 4N RGE 64W
Permanent Datum Ground Level Elevation 4674'
Log Measured From K.B. 24'
Drilling Measured From K.B. 24'

Other Services
Elevation
K.B. 4698'
D.F. 4697'
G.L. 4674'

Date	OCTOBER 7th, 2024
Run Number	1
Depth Driller	12586'
Depth Logger	2415'
Bottom Logged Interval	2407'
Top Log Interval	SURFACE
Open Hole Size	8-3/4"
Type Fluid	FRESH WATER
Density / Viscosity	8.3#
Max. Recorded Temp.	N/A
Estimated Cement Top	N/A
Time Well Ready	N/A
Time Logger on Bottom	N/A
Equipment Number	DSSHSR20-002
Location	MILLIKEN, CO
Recorded By	J. MICHAEL
Witnessed By	MR. CHRIS EBERLE

Borehole Record		Tubing Record					
Run Number	Bit	From	To	Size	Weight	From	To


Casing Record		Top		Bottom	
Surface String	Size	Wgt/Ft	SURFACE	SURFACE	125'
Prot. String	13-5/8"	88.2#	SURFACE	SURFACE	671'
Production String	9-5/8"	36#	SURFACE	SURFACE	7135'
Liner	7"	26#	SURFACE	SURFACE	12584'
	4-1/2"	11.6#	6895'		

<<< Fold Here >>>

All interpretations are opinions based on inferences from electrical or other measurements and we cannot and do not guarantee the accuracy or correctness of any interpretation, and we shall not, except in the case of gross or willful negligence on our part, be liable or responsible for any loss, costs, damages, or expenses incurred or sustained by anyone resulting from any interpretation made by any of our officers, agents or employees. These interpretations are also subject to our general terms and conditions set out in our current Price Schedule.

Comments

NO CORRELATION LOG AVAILABLE

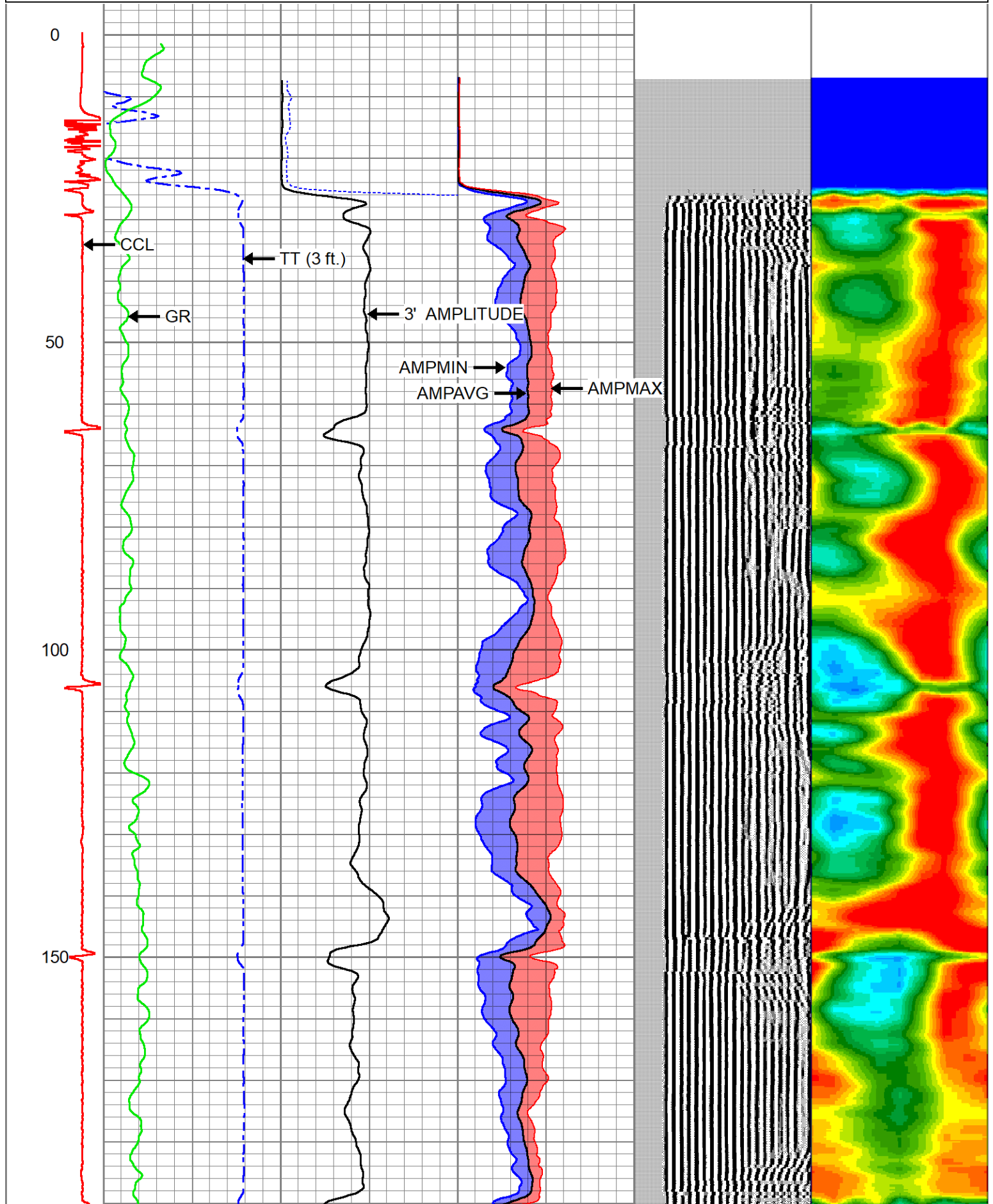
Sensor	Offset (ft)	Schematic	Description	Length (ft)	O.D. (in)	Weight (lb)
			Cable_Head-1_7/16 Titan 1 7/16" Cable Head	1.02	1.44	3.31

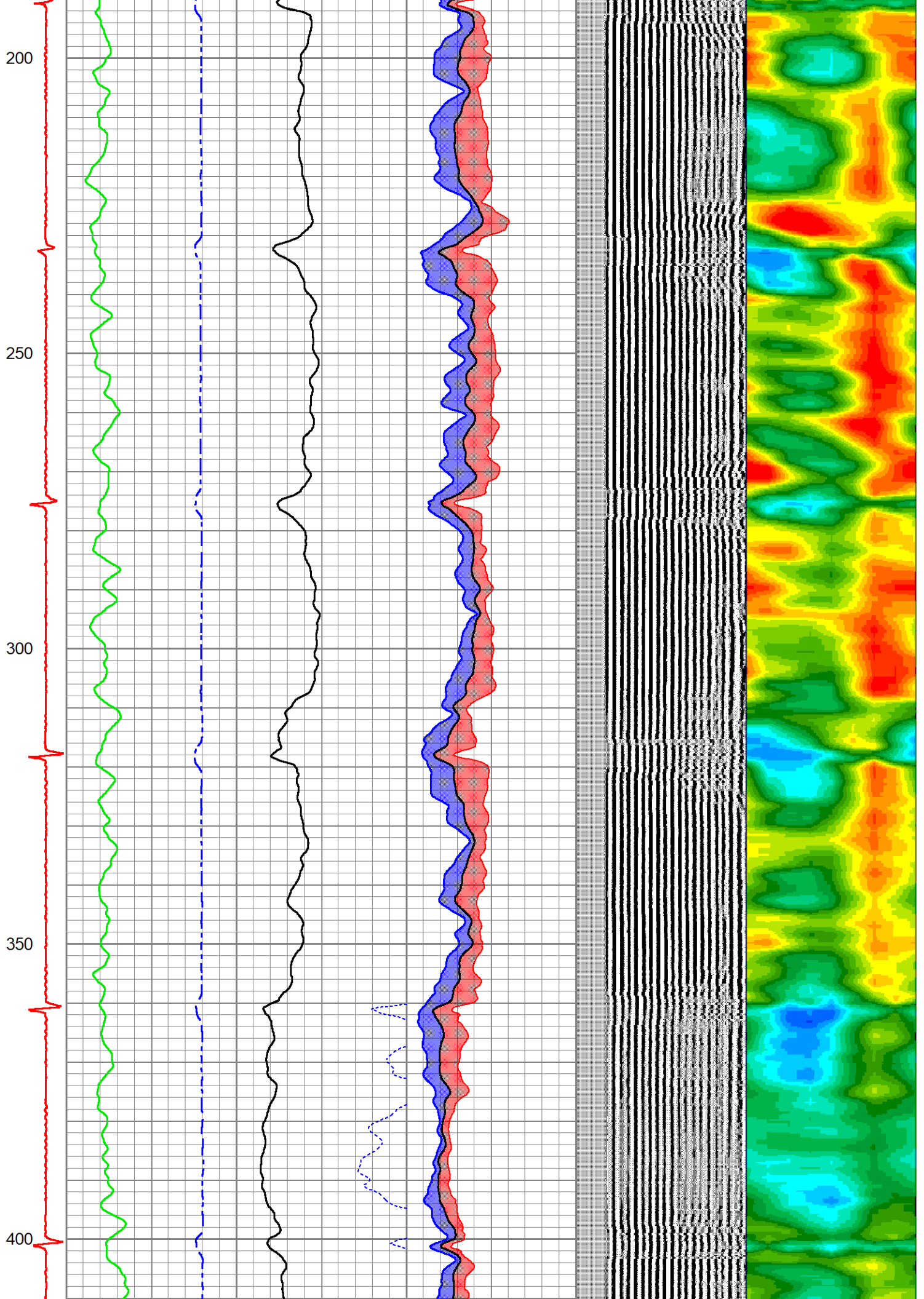
			Centralizers-Sondex PRC 2.75" Roller Centralizers Tekco 2 3/4" Adjustable Centralizer	3.00	2.75	25.00
CCL	0.00					
TCF	0.00					
GRHV	0.94					
GR	0.94					
			DSS_HSR_ELE-DSS_HSR_20_ELE (HSR20 0000) DSS 2 3/4" HSR Bond tool - Electronics Module	4.81	2.75	61.00
ROTV	4.10					
THV	4.10					
INTEMP	4.10					
PNEG	4.10					
PPOS	4.10					
WVFS8	6.09					
WVFS7	6.09					
WVFS6	6.09					
WVFS5	6.09					
WVFS4	6.09					
WVFS3	6.09		DSS_HSR_SND-DSS_HSR_20_SND (HSR20 0000) DSS 2 3/4" HSR Bond tool - Sonde Module	7.70	2.75	86.00
WVFS2	6.09					
WVFS1	6.09					
WVFCAL	6.59					
WVF3FT	6.59					
WVF5FT	7.59					
TEMP	11.67					
WVFSYNC	11.80					
			Centralizers-Sondex PRC 2.75" Roller Centralizers Tekco 2 3/4" Adjustable Centralizer	3.00	2.75	25.00

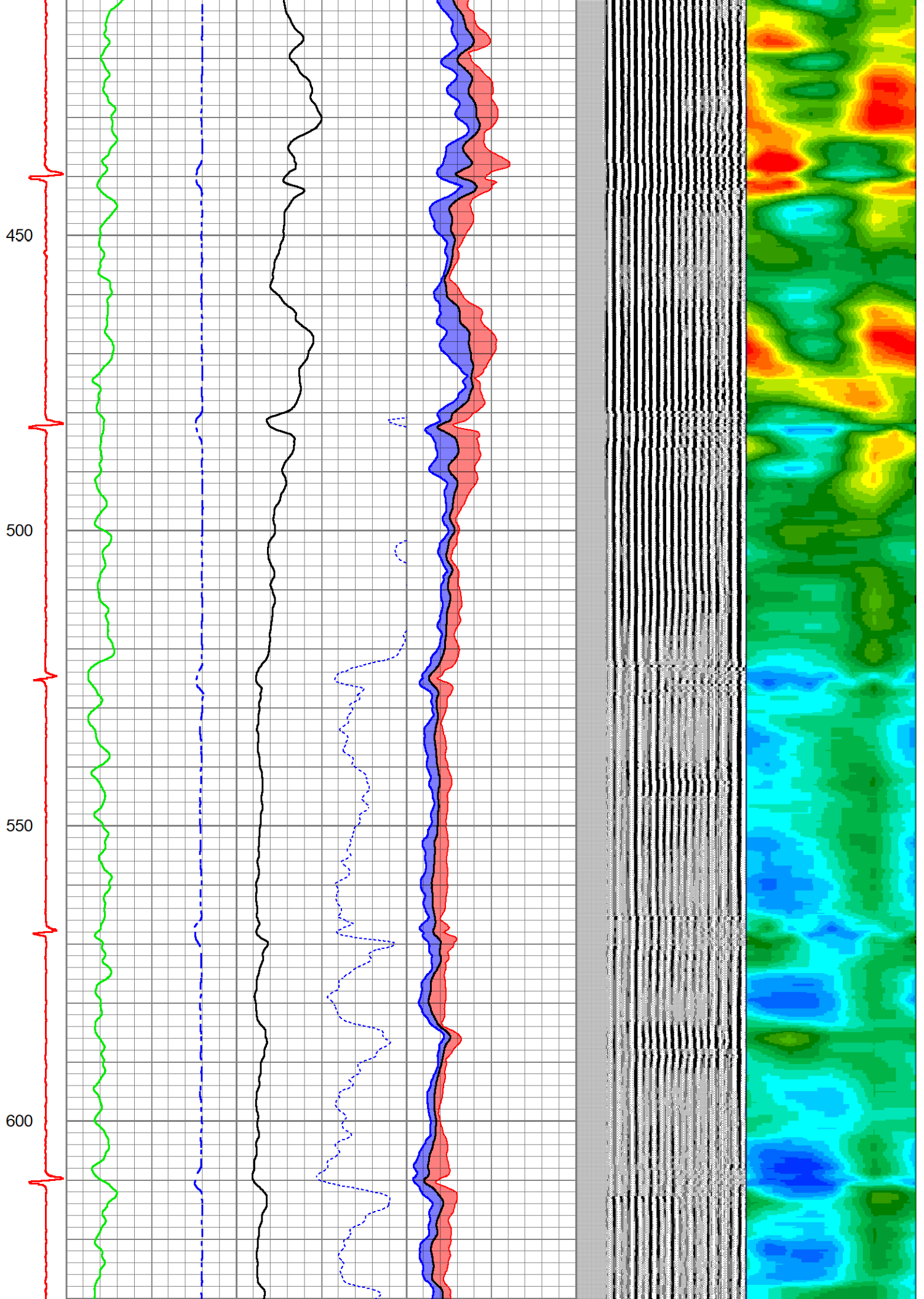
Dataset: chevron-sater c25-79hn.db: WATTENBERG-90750/SATER_C25-79HN/DSSHRSR20/RBL.1
 Total length: 19.52 ft
 Total weight: 200.31 lb
 O.D.: 2.75 in

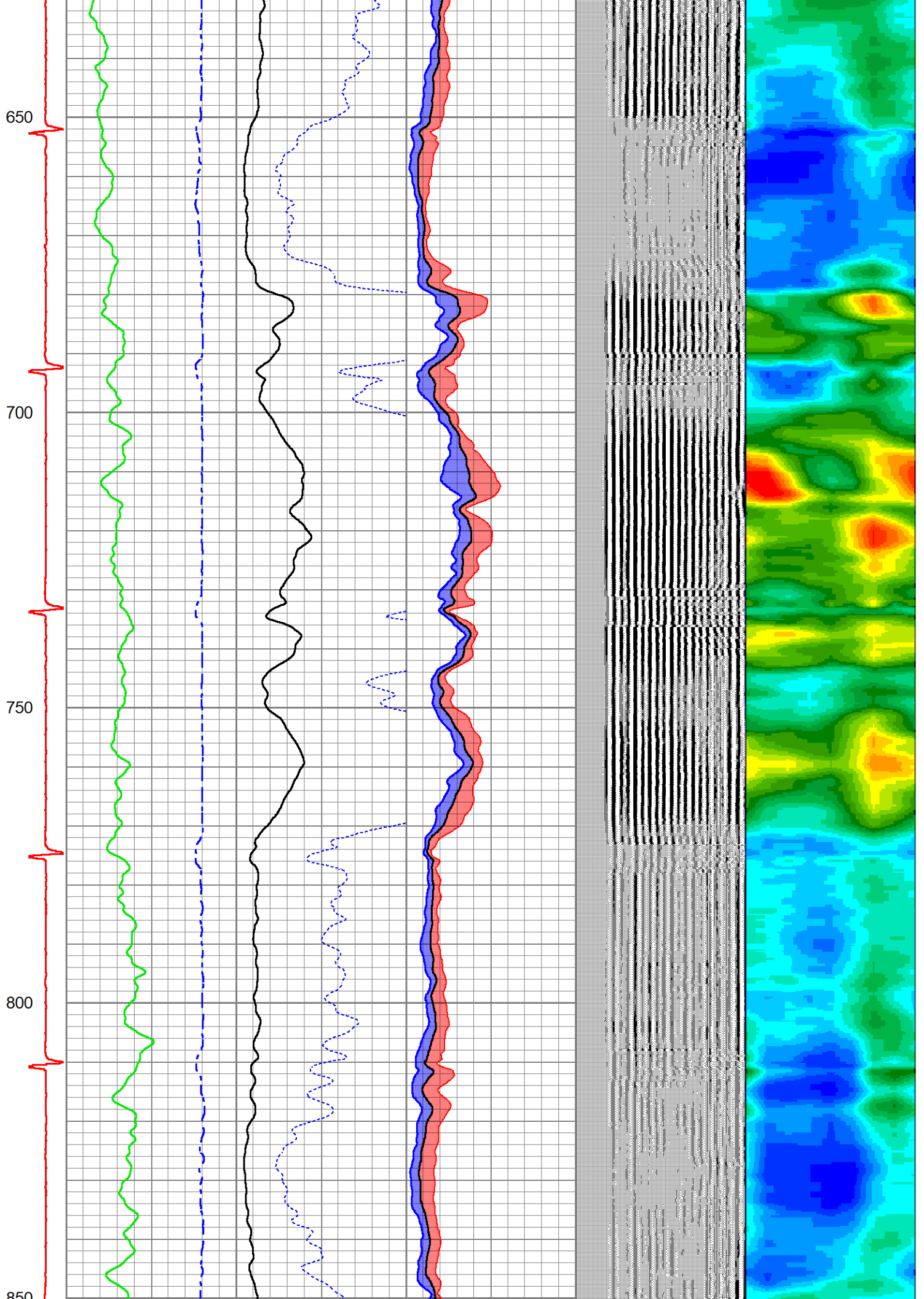
Database File chevron-sater c25-79hn.db
 Dataset Pathname WATTENBERG-90750/SATER_C25-79HN/DSSHRSR20/RBL.1
 Presentation Format ranger_dss_radial
 Dataset Creation Mon Oct 07 11:14:07 2024
 Charted by Depth in Foot scaled 1:240

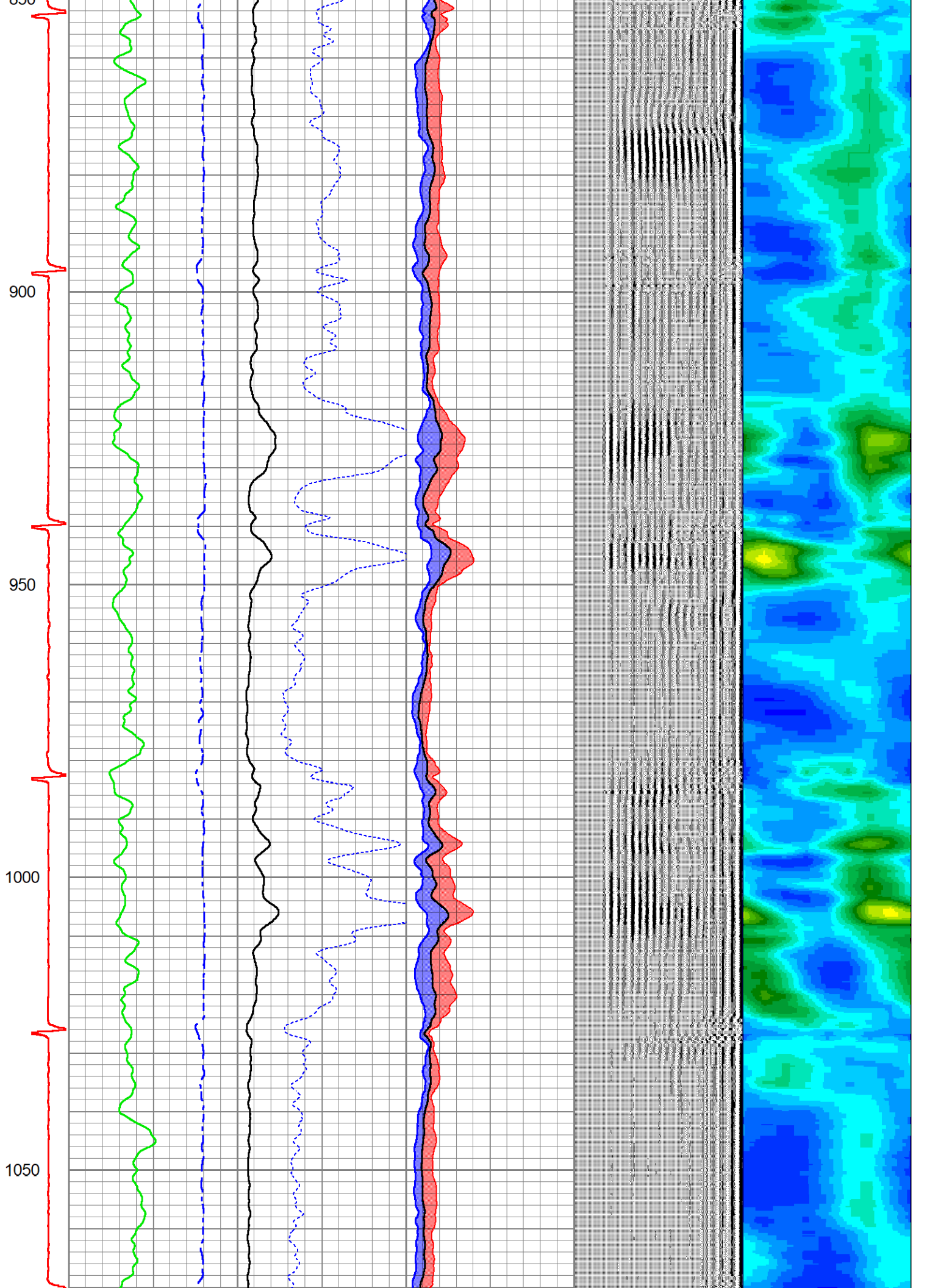
CCL	TT (3 ft.)		3' AMPLITUDE		0	AMPMIN	100	VDL (5 ft.)		1	RADIAL MAP	8
-200020000	380	(usec) 220	0	(mV) 100	0	AMPAVG	100	200	(usec) 1200			
	0	GR (GAPI) 150	3' Amplitude x5		0	AMPMAX	100					
			0	(mV) 20								









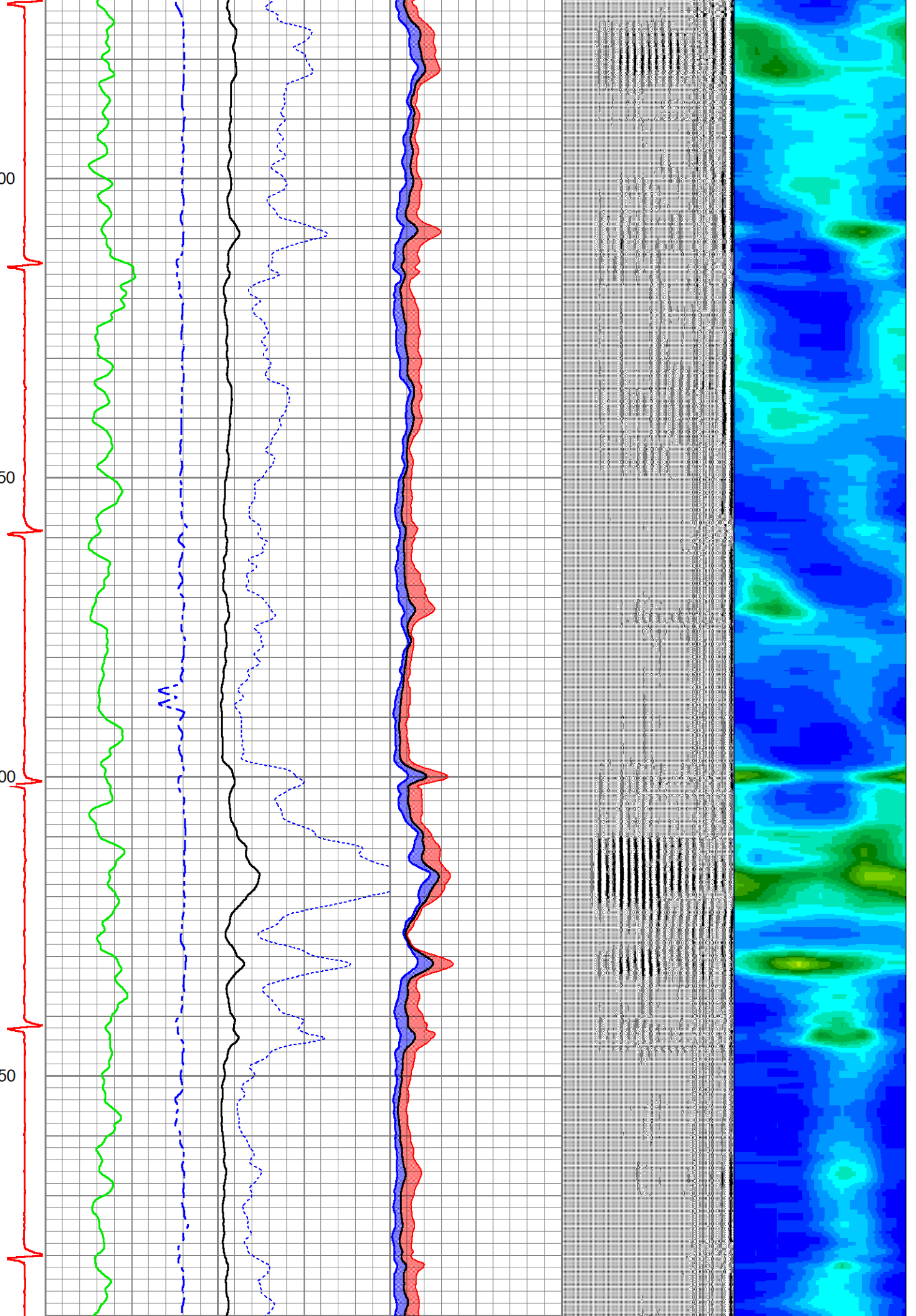


1100

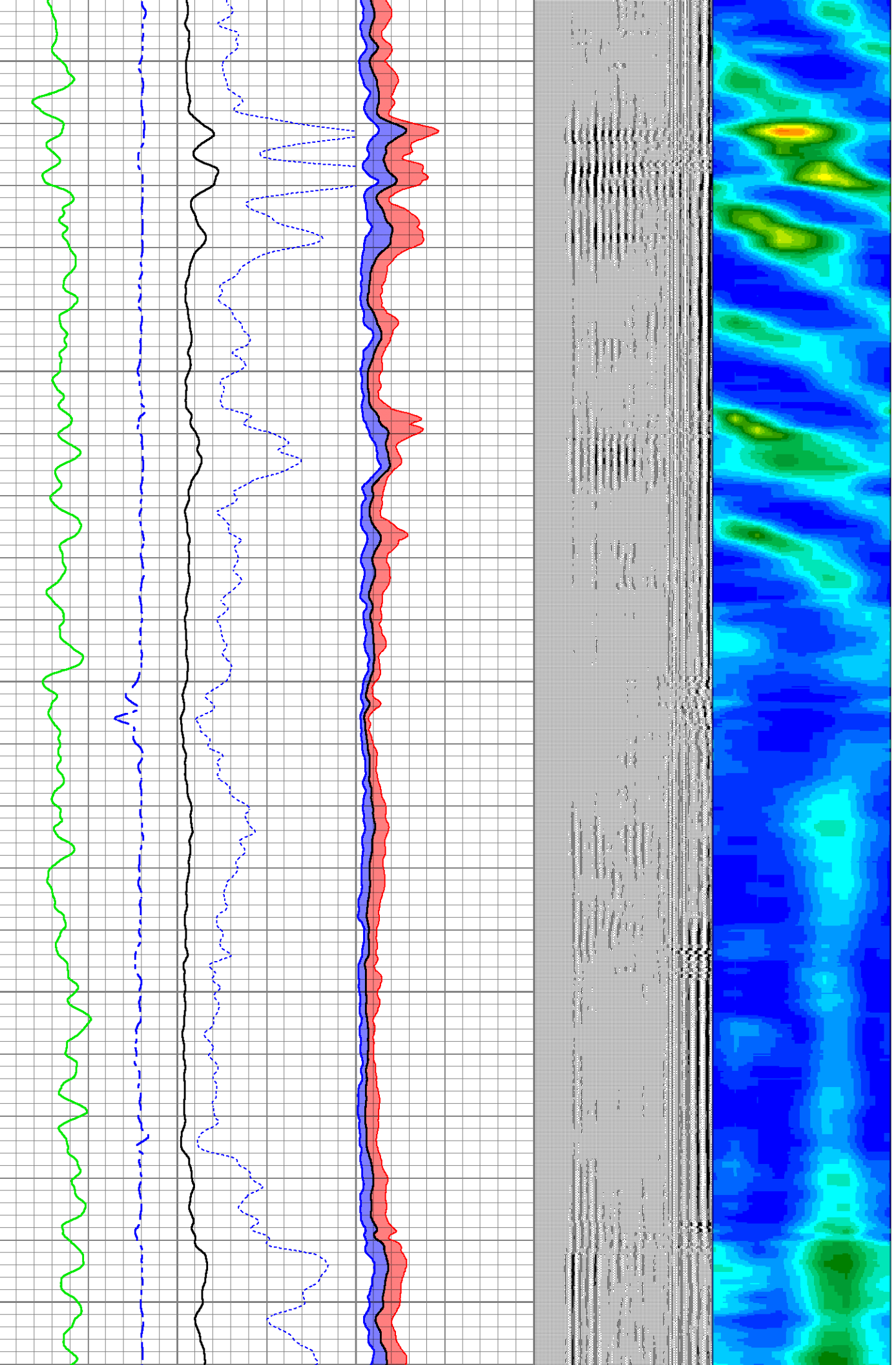
1150

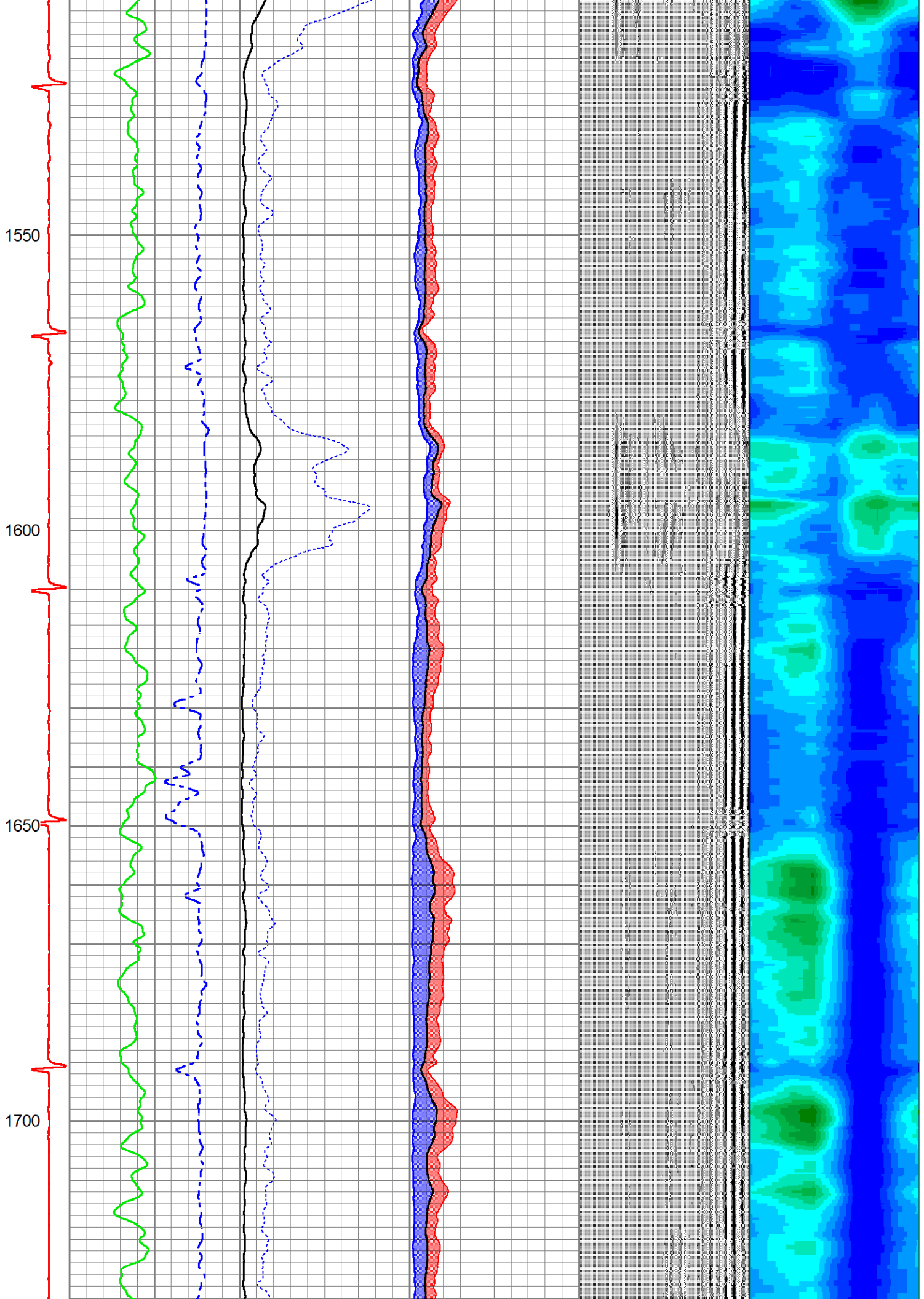
1200

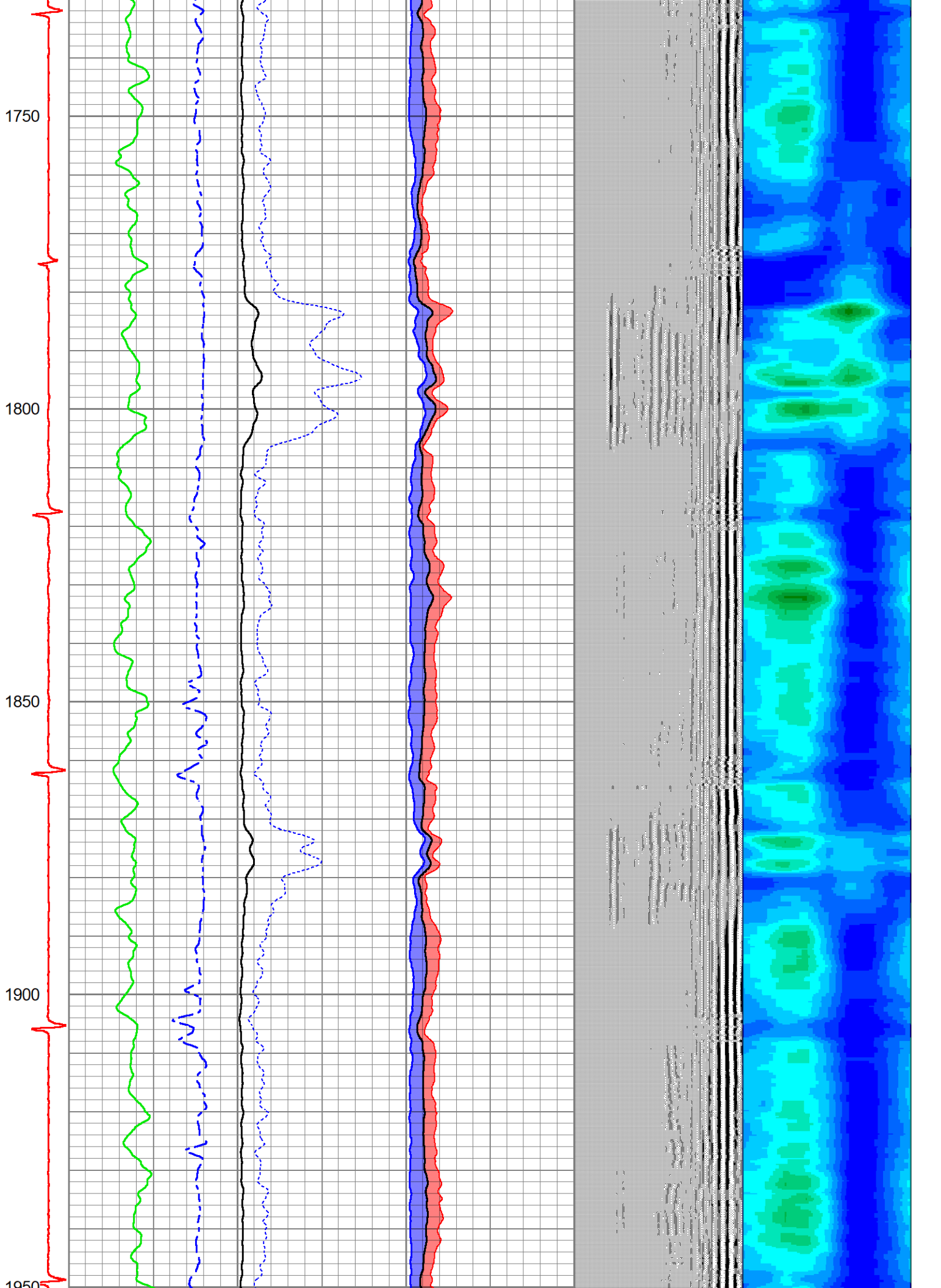
1250

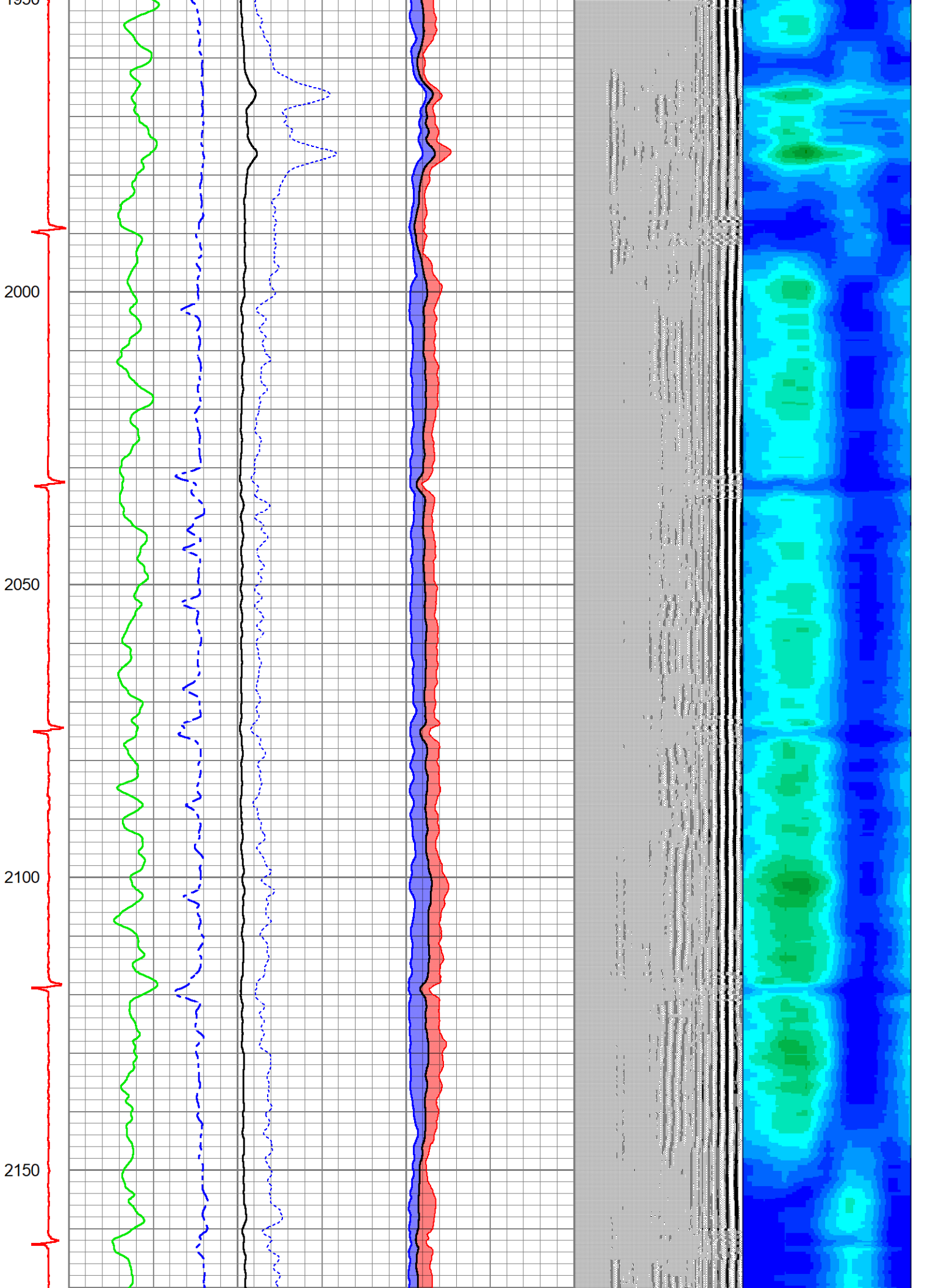


1300
1350
1400
1450
1500









2200

2250

2300

2350

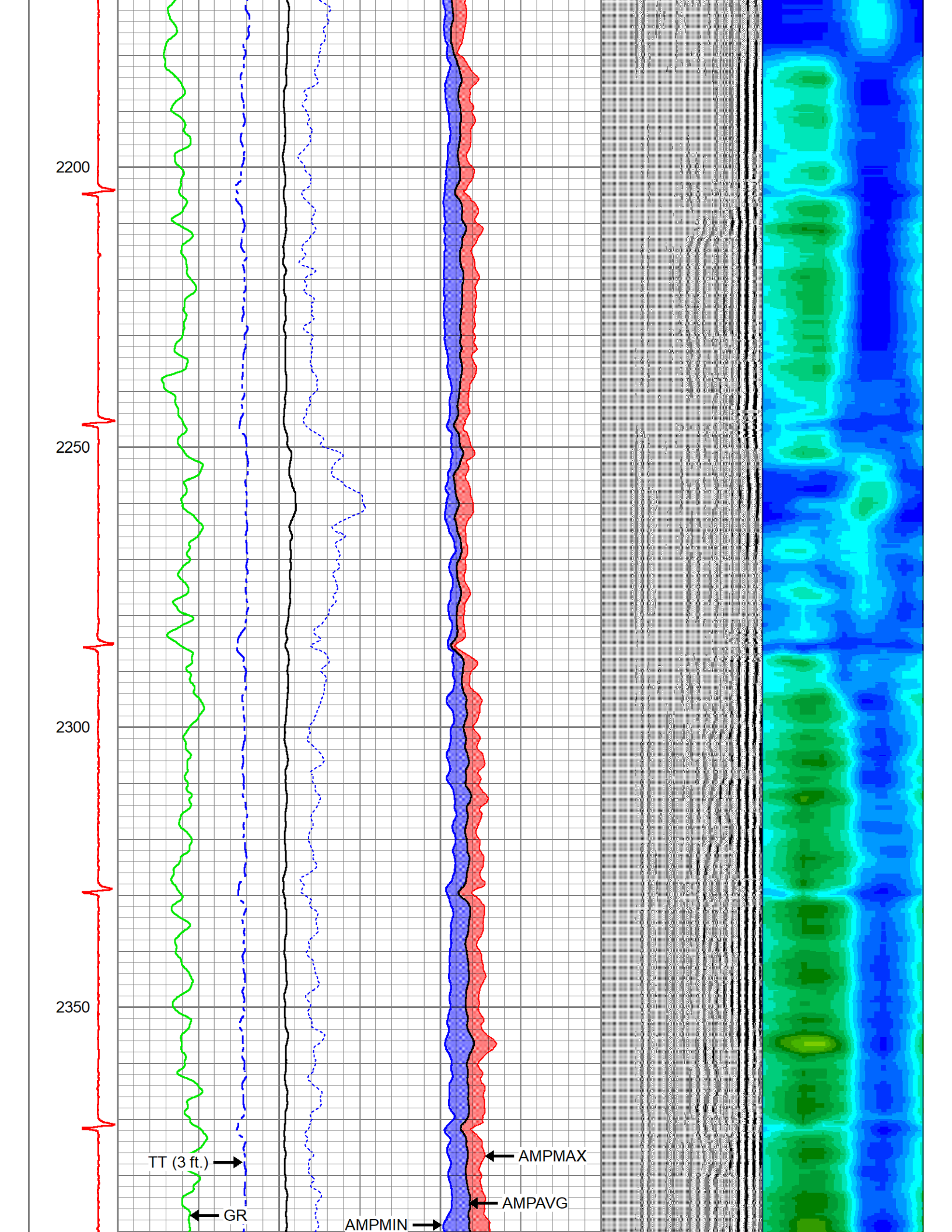
TT (3 ft.) →

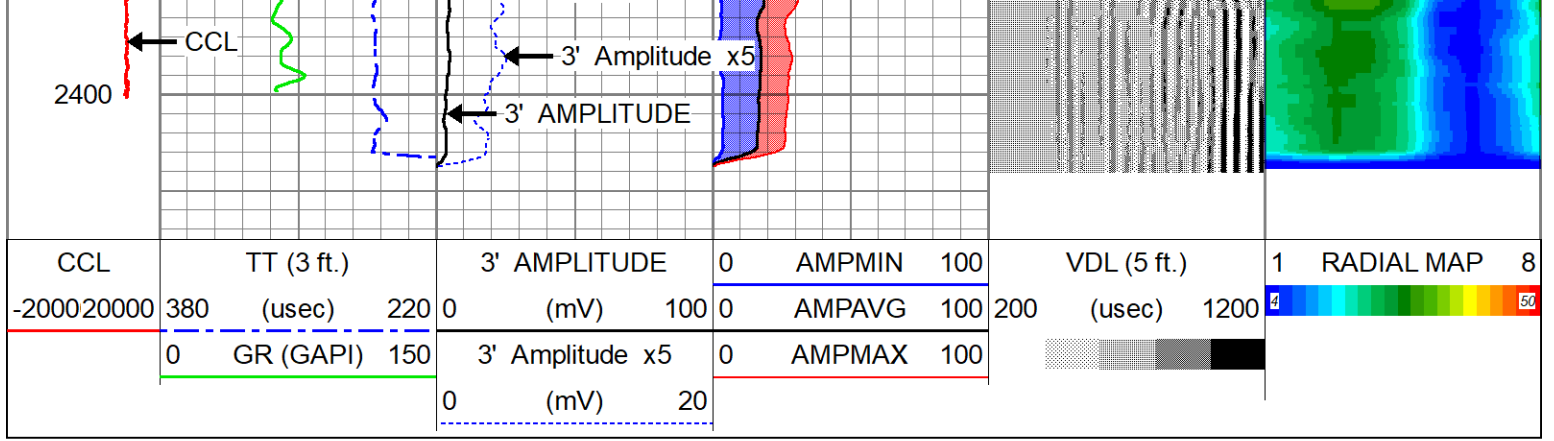
← GR

← AMPMIN →

← AMPMAX

← AMPAVG





Company	CHEVRON	
Well	SATER C25-79HN	
Field	WATTENBERG - 90750	
County	WELD	
State	COLORADO	Country WELD