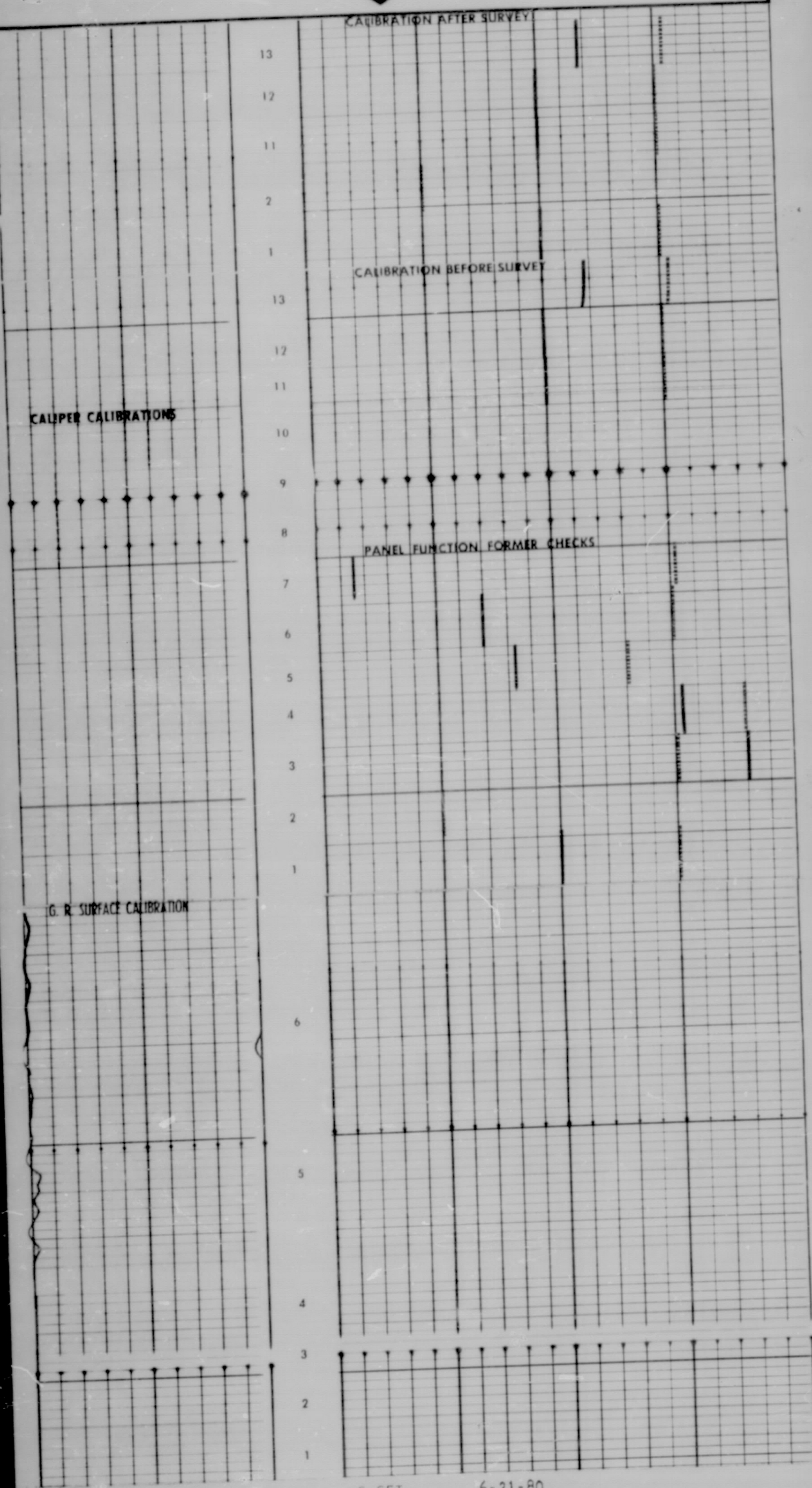


<b>GAMMA RAY</b> API UNITS 0 200 400		<b>DENSITY POROSITY INDEX</b> % <u>SS 2.65</u> MATRIX 30 20 10 0 -10
<b>CALIPER</b> DIAM. IN INCHES 6 16		<b>BULK DENSITY</b> GRAMS/CC 2.0 2.5 3.0 1.0 1.5 2.0
		<b>CORRECTION</b> GRAMS/CC Use this scale when correction curve is presented in Track 3 25 0 +25

**CALIBRATION RECORD**



FDC SURFACE CALIBRATION  
 PGS-ED-494  
 PGP-EJ-1159  
 PGC-EB-1098  
 PDH-D-1008

G-SET 6-21-80  
 P1 432.8  
 P2 688.4

FORMATION DENSITY COMPENSATED CALIBRATION CODING					
1. MECHANICAL ZERO	2. RECORDER SENSITIVITY	3. PANEL TEST	4. FDC LIQUID	5. POS	6. $\Delta p$
3. #1	2.92				.00
4. #2	2.78				+.14
5. #3	2.42				-.10
6. #4	2.35				.00
7. #5	2.08				.01
8. MECHANICAL ZERO CALIPER	9. 8" RING	10. 12" RING	11. TOOL CALIBRATE #1 SET $\mu = 2.50$	12. TOOL CALIBRATE #2 SET $\Delta p = .00$	13. LOG POSITION $\mu = 2.59$ , $\Delta p = .015$

GAMMA RAY CALIBRATION CODING			
1. MECHANICAL ZERO	2. ELECTRICAL ZERO	3. RECORDER SENSITIVITY	4. MEMORIZER ADJUSTMENT
5. BACKGROUND	6. CALIBRATE - SOURCE IN PLACE		

**CALIBRATION RECORD**

COMPANY <u>MACEY &amp; MERSON OIL, INC.</u>	SCHL. FR <u>7753</u>
WELL <u>ABRAMS NO. 1</u>	SCHL. TD <u>7754</u>
FIELD <u>WATTENBERG "J"</u>	DRLR. TD <u>7755</u>
COUNTY <u>WELD</u>	Elev: <u>KB 4980</u>
STATE <u>COLORADO</u>	DF <u>-</u>
	GL <u>4968</u>