

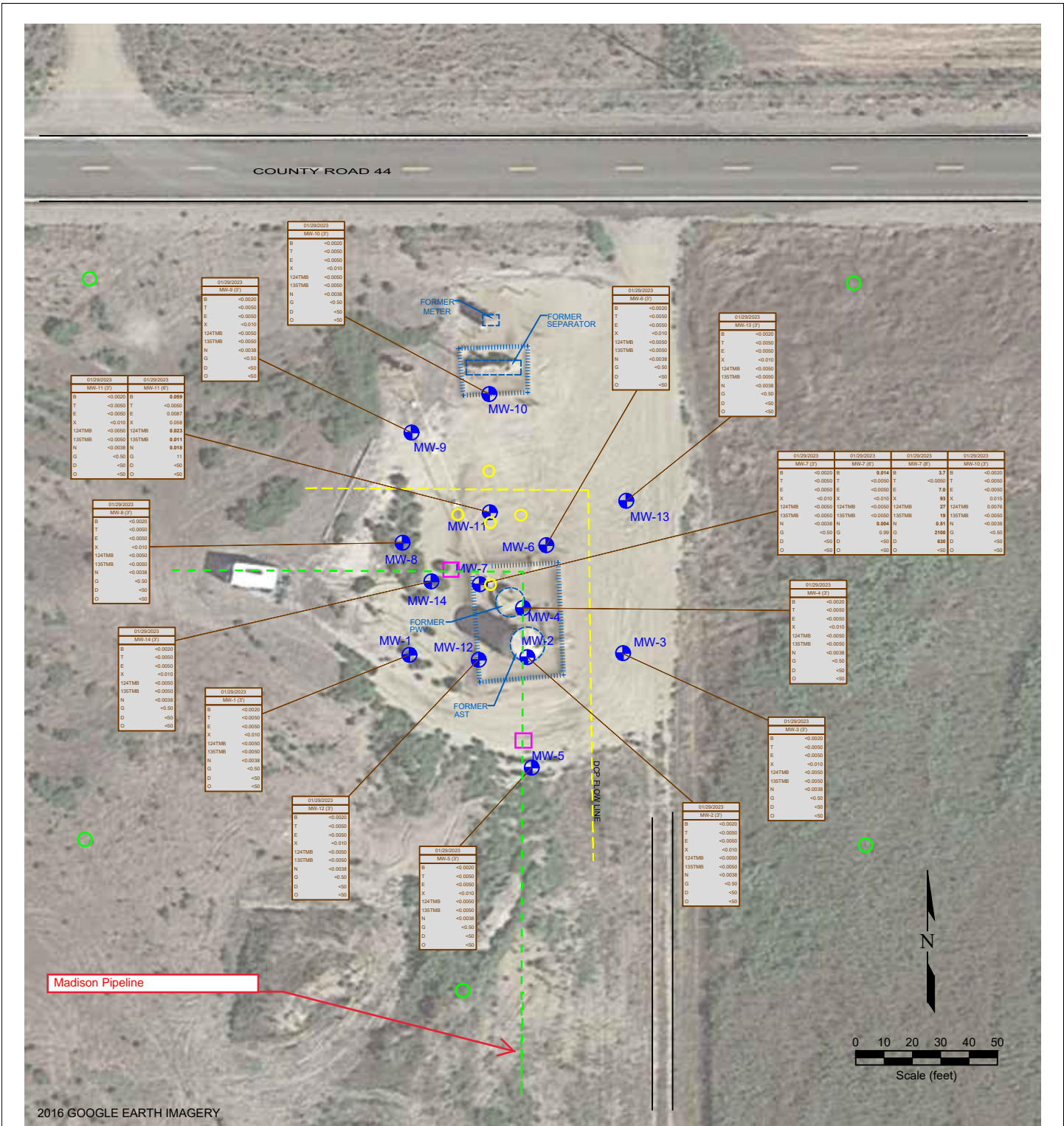
USGS 7.5 MINUTE SERIES (TOPOGRAPHIC)

Figure 1  
SITE LOCATION MAP

Noble Energy, Inc. ~ HSR Fisher 6-23  
NWNE, Sec 23, T4N, R65W, 6th P.M.  
Weld County, Colorado  
40.30500 ° -104.630639 °

Project No. <b>CO24-016</b>	API #	Facility # <b>309888</b>
Date <b>1/31/24</b>	Remediation #	Filename <b>24016T</b>





Proposed background soil sample location

Proposed confirmation soil boring locations following natural attenuation

**LEGEND**

- MONITORING WELL
- ABOVE GROUND STORAGE TANK
- FORMER FORMER FACILITY
- DCP FLOW LINE
- FENCE LINE
- CONTAINMENT BERM
- CONTAINMENT WALL

DATE SAMPLED	SAMPLE ID and DEPTH (ft)
01/29/2023	MW-1 (3')
B	<0.0020
T	<0.0050
E	<0.0050
X	<0.010
124TMB	<0.0050
135TMB	<0.0050
N	<0.0038
G	<0.50
D	<50
D	<50

**Figure 5**  
**SOIL CHEMISTRY MAP**  
 January 29, 2024  
 Noble Energy, Inc. ~ HSR Fisher 6-23  
 NWNE, Sec 23, T4N, R65W, 6th P.M.  
 Weld County, Colorado  
 40.30500 ° -104.630639 °

Project No. <b>CO24-016</b>	API #	Facility # <b>309888</b>	
Date <b>1/31/24</b>	Remediation #	Filename <b>24016Q</b>	