



Form PS-102

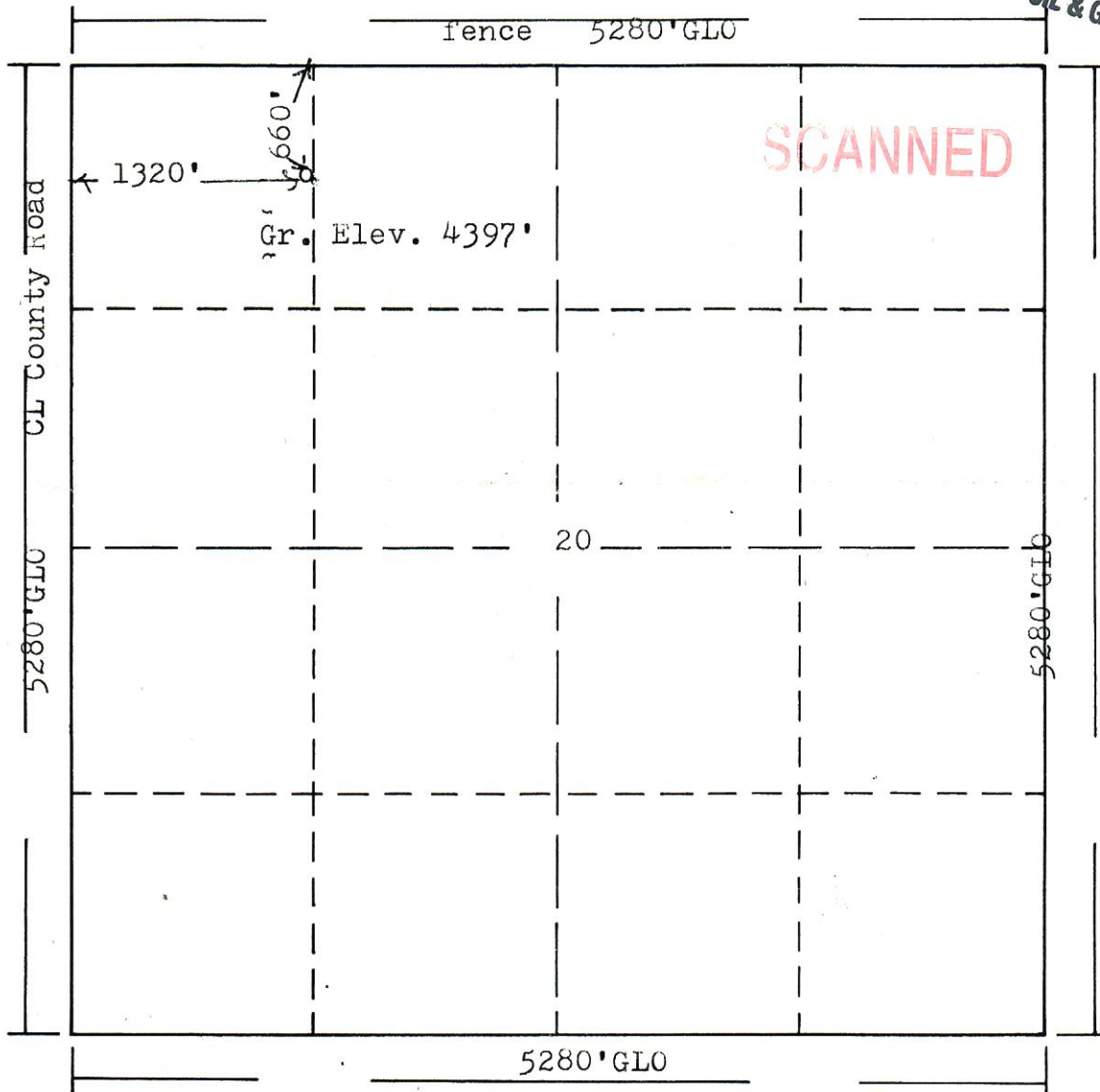


00085941

R. 57W

RECEIVED

JAN 7 1986

STATE
COLO. OIL & GAS CONS. COMM.

Scale: 1"=1000'

Powers Elevation of Denver, Colorado has in accordance with a request from Mr. Gear for Argentia Corp. determined the location of No. 1 Lohf-State to be 660' FN & 1320' FW Section 20, Township 2N Range 57W of the 6th Principal Meridian, Morgan County, Colorado

I hereby certify that this plat is an accurate representation of a correct survey showing the location of



Date: 12-31-85

Billy G. Holloway
Licensed Land Surveyor No. 2853
State of Colorado

