



FORM F-106

RECEIVED

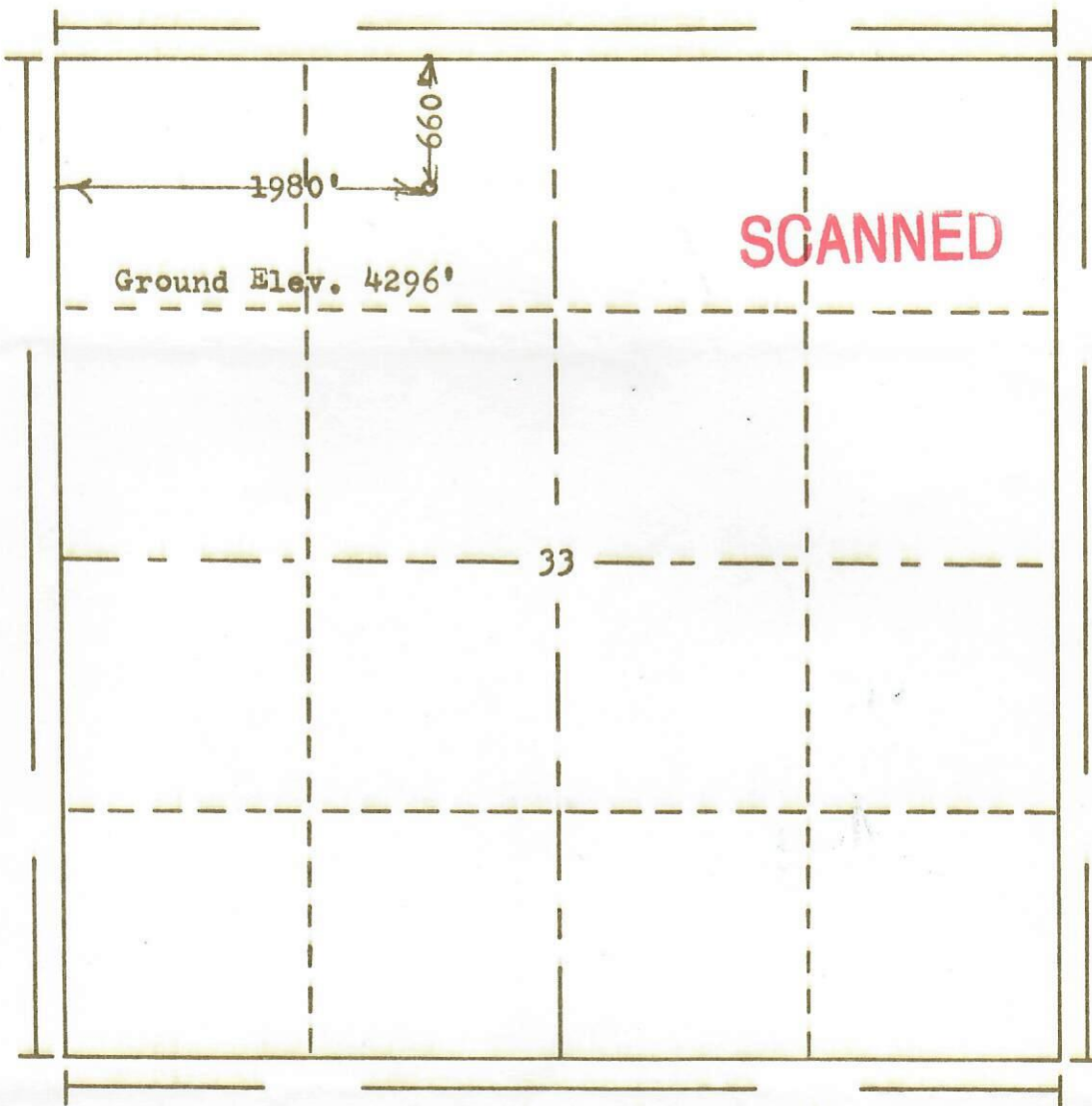
MAR 6 1972



00550902

GOLD CO. A. GAS. P. 1000. COMM.

R. 44W

T.
13
S

Scale... 1" = 1000'

Powers Elevation Company, Inc. of Denver, Colorado
has in accordance with a request from Mr. Repp
for Amoco Production Co.

determined the location of No. 124 Champlin Amoco A-2
to be CNE NW Section 33 Township 13S
Range 44W of the 6th Principal Meridian
Cheyenne County, Colorado

I hereby certify that this plat is an
accurate representation of a correct
survey showing the location of

Date: 2-28-72

B. H. H. H. H.
Licensed Land Surveyor No. 2853
State of Colorado

72-126