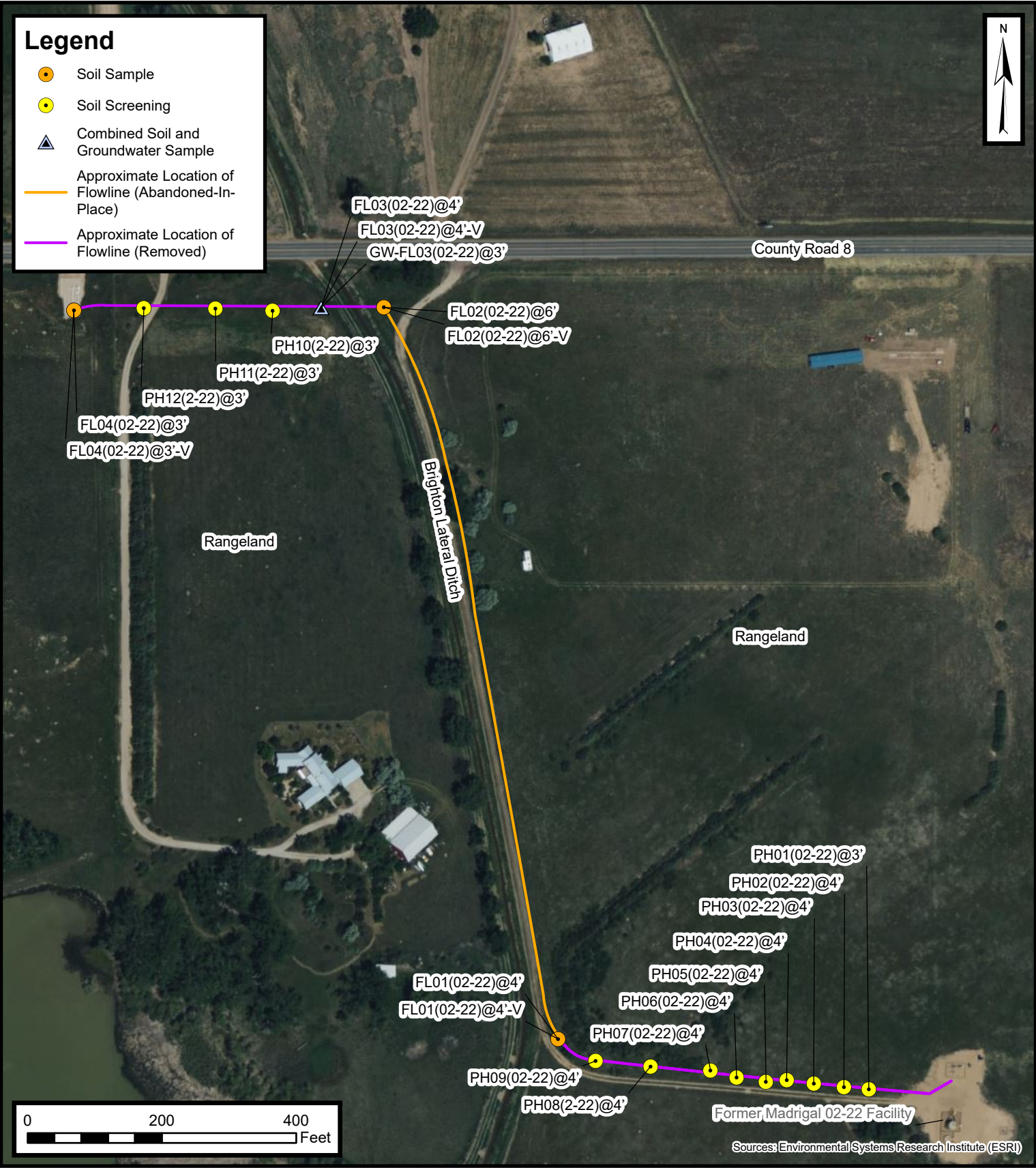
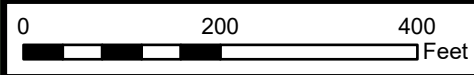


Legend

- Soil Sample
- Soil Screening
- ▲ Combined Soil and Groundwater Sample
- Approximate Location of Flowline (Abandoned-In-Place)
- Approximate Location of Flowline (Removed)



Default Folder: C:\Users\Margan\OneDrive - ENSOLUM, LLC\Ensolium GIS\0 - Projects\Kerr-McGee Oil & Gas Onshore, LP\09A1417840 - Madrigal 02-22 Facility



Sources: Environmental Systems Research Institute (ESRI)

Sales Line Excavation Site Map

Madrigal 02-22 Facility
 Kerr-McGee Oil & Gas Onshore, LP
 NWNW SEC 22-T1N-R66W
 Weld County, CO
 Project Number: 09A1417840



FIGURE
2