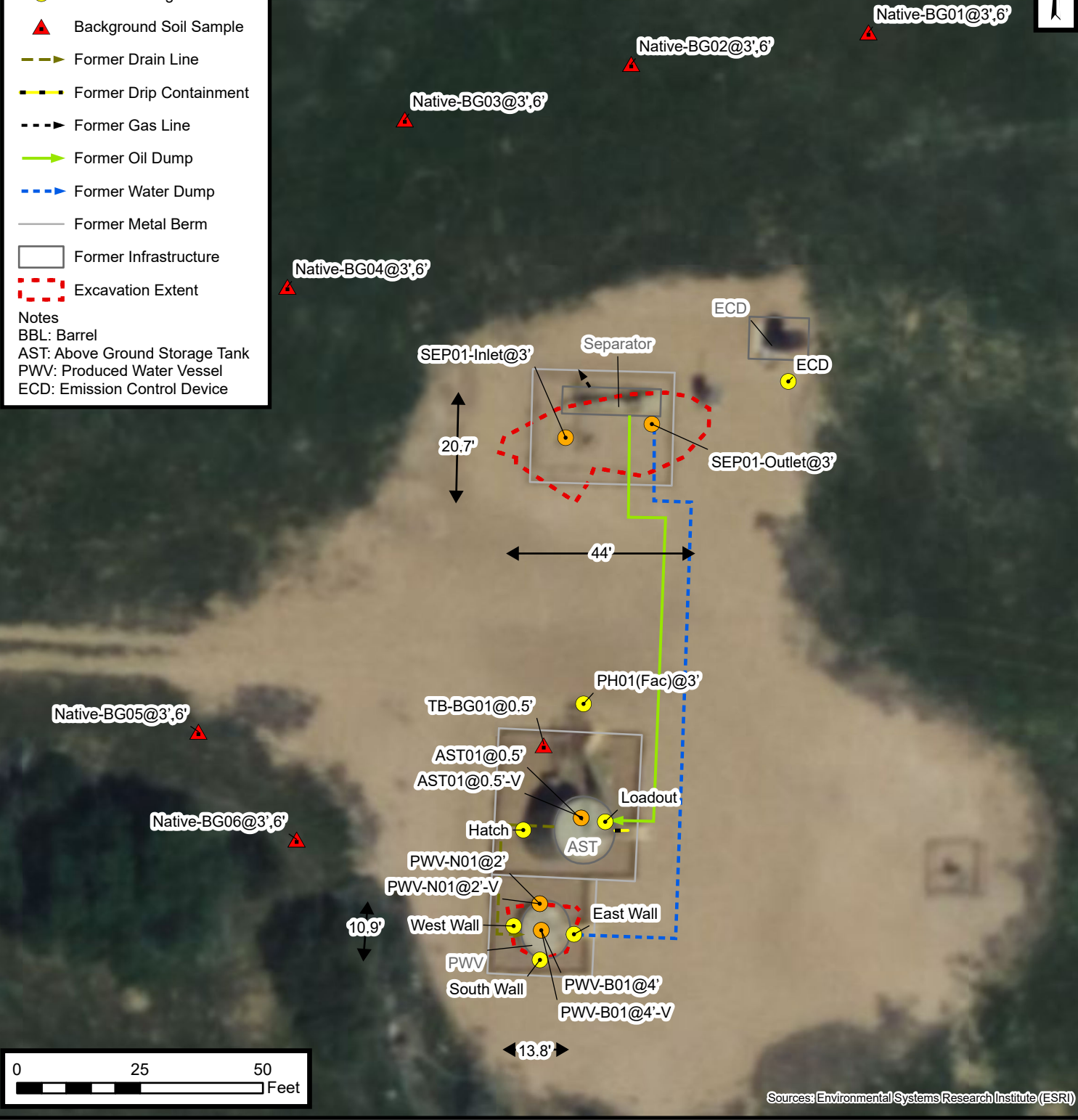


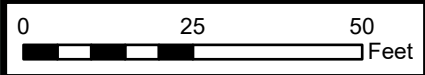
Legend

- Soil Sample
- Soil Screening
- ▲ Background Soil Sample
- Former Drain Line
- Former Drip Containment
- - - Former Gas Line
- Former Oil Dump
- Former Water Dump
- Former Metal Berm
- Former Infrastructure
- Excavation Extent

Notes
 BBL: Barrel
 AST: Above Ground Storage Tank
 PWV: Produced Water Vessel
 ECD: Emission Control Device



Default Folder: C:\Users\Margan\OneDrive - ENSOLUM, LLC\Ensolium\GIS\0 - Projects\Kerr-McGee Oil & Gas Onshore, LP\09A1417840 - Madrigal 02-22 Facility



Sources: Environmental Systems Research Institute (ESRI)



Excavation Site Map

Madrigal 02-22 Facility
 Kerr-McGee Oil & Gas Onshore, LP
 NWNW SEC 22-T1N-R66W
 Weld County, CO
 Project Number: 09A1417840

FIGURE
1