

SITE ASSESSMENT REPORT
KILDOW PMC 31-2 FACILITY
ECMC SPILL TRACKING # 484174
ECMC REMEDIATION # 25628

Prepared for:



2115 117th Avenue
Greeley, CO 80631

Prepared by:



6855 W. 119th Ave
Broomfield, CO 80020

TABLES

TABLE 1
FIELD DATA SUMMARY TABLE
NOBLE ENERGY, INC. - 100322
KILDOW PMC 31-2, WELD COUNTY COLORADO
REM # 25628

Sample ID	Sample Date	Depth (ft)	GPS Data		PDOP Value	VOC Concentration (ppm)
			Latitude/Longitude			
SS01@2.5'	3/28/2023	2.5	40.275904	-104.591219	1.0	0.0
SS02@2.5'	3/28/2023	2.5	40.275873	-104.591200	1.0	0.0
SS03@2.5'	3/28/2023	2.5	40.275850	-104.591218	0.9	0.0
SS04@2.5'	3/28/2023	2.5	40.275872	-104.591245	1.0	0.0
FS01@4.5'	3/28/2023	4.5	40.275875	-104.591218	0.9	100.7
FS01@7'	3/28/2023	7	40.275875	-104.591218	0.9	487.1
AST01@0.5'	3/28/2023	0.5	40.275861	-104.591115	0.9	0.0
SEP01-FL@3'	3/28/2023	3	40.275889	-104.591364	0.9	0.3
SEP01-DL@3'	3/28/2023	3	40.275881	-104.591397	0.9	0.2
BH-01@7'	4/20/2023	7	NC	NC	NC	178.2
BH-01@12'	4/20/2023	12	NC	NC	NC	1.2
BH-02@7'	4/20/2023	7	NC	NC	NC	332.5
BH-02@12'	4/20/2023	12	NC	NC	NC	0.3
BH-03@7'	4/20/2023	7	NC	NC	NC	235.6
BH-03@12'	4/20/2023	12	NC	NC	NC	2.2
BH-04@8'	4/20/2023	8	NC	NC	NC	493.8
BH-04@15'	4/20/2023	15	NC	NC	NC	1.2
BH-05@7'	4/20/2023	7	NC	NC	NC	103.2
BH-05@12'	4/20/2023	12	NC	NC	NC	0.2
BH-06@7'	4/20/2023	7	NC	NC	NC	113.5
BH-06@12'	4/20/2023	12	NC	NC	NC	0.2

TABLE 1
FIELD DATA SUMMARY TABLE
NOBLE ENERGY, INC. - 100322
KILDOW PMC 31-2, WELD COUNTY COLORADO
REM # 25628

Sample ID	Sample Date	Depth (ft)	GPS Data		PDOP Value	VOC Concentration (ppm)
			Latitude	Longitude		
BH07@7-8'	9/26/2023	7-8	NC	NC	NC	0.6
BH07@9-10'	9/26/2023	9-10	NC	NC	NC	100.6
BH07@11-12'	9/26/2023	11-12	NC	NC	NC	18.4
BH07@13-13.5'	9/26/2023	13-13.5	NC	NC	NC	12.1
BH08@7-8'	9/26/2023	7-8	NC	NC	NC	710.5
BH08@11.5-12.5'	9/26/2023	11.5-12.5	NC	NC	NC	504.6
BH09@7-8'	9/26/2023	7-8	NC	NC	NC	9.9
BH09@11-12'	9/26/2023	11-12	NC	NC	NC	1.5
BH09@13-13.5'	9/26/2023	13-13.5	NC	NC	NC	20.2
BH10@7-8'	9/26/2023	7-8	NC	NC	NC	0.4
BH10@11-12'	9/26/2023	11-12	NC	NC	NC	0.0
BH09R@9-10'	11/21/2024	9-10	40.275856	-104.591349	NC	0.0
BH09R@14-15'	11/21/2024	14-15	40.275856	-104.591349	NC	0.3
BH12@8-9'	11/21/2024	8-9	40.275953	-104.591351	1.2	0.0
BG01@7'	3/28/2023	7	40.275749	-104.591422	0.9	0.0
BG01@2.5'	3/28/2023	2.5	40.275749	-104.591422	0.9	0.0
BG01@4.5'	3/28/2023	4.5	40.275749	-104.591422	0.9	0.0
BG01@7-8'	9/26/2023	7-8	NC	NC	NC	0.0
BG01@11-12'	9/26/2023	11-12	NC	NC	NC	0.0
BG02@7-8'	9/26/2023	7-8	NC	NC	NC	0.4
BG02@11-12'	9/26/2023	11-12	NC	NC	NC	0.0

TABLE 1
FIELD DATA SUMMARY TABLE
NOBLE ENERGY, INC. - 100322
KILDOW PMC 31-2, WELD COUNTY COLORADO
REM # 25628

Sample ID	Sample Date	Depth (ft)	GPS Data		PDOP Value	VOC Concentration (ppm)
			Latitude	Longitude		
BG03@7-8'	9/26/2023	7-8	NC	NC	NC	0.0
BG03@11-12'	9/26/2023	11-12	NC	NC	NC	0.2
BG04@7-8'	9/26/2023	7-8	NC	NC	NC	0.0
BG04@11-12'	9/26/2023	11-12	NC	NC	NC	0.0
BG05@7-8'	9/26/2023	7-8	NC	NC	NC	0.1
BG05@11-12'	9/26/2023	11-12	NC	NC	NC	0.0

1. Global Positioning System (GPS) data is provided in decimal degrees using North American Datum (NAD) 83 UTMZone 13 North.

2. Volatile organic compound (VOC) concentrations are measured in the field using a photoionization detector (PID).

PDOP = Position Dilution of Precision

ppm = Parts per million

in. = Inches

ft. = Feet

bgs = Below ground surface

NC = Not Collected

TABLE 2
SUMMARY OF VOLATILE ORGANIC SOIL CHEMISTRY DATA
NOBLE ENERGY, INC. - 100322
KILDOW PMC 31-2, WELD COUNTY COLORADO
REM # 25628

Sample ID	Sample Date	Depth (ft)	Benzene (mg/kg)	Toluene (mg/kg)	Ethyl-Benzene (mg/kg)	Xylenes (mg/kg)	1,2,4-Trimethyl-Benzene (mg/kg)	1,3,5-Trimethyl-Benzene (mg/kg)	Naphthalene (mg/kg)	TPH (mg/kg)	TPH GRO (mg/kg)	TPH DRO (mg/kg)	TPH ORO (mg/kg)
ECMC Table 915-1 Limits (Residential SSL)			1.2	490	5.8	58	30	27	2	500	500**		
ECMC Table 915-1 Limits (Protection of Groundwater SSL)			0.0026	0.69	0.78	9.9	0.0081	0.0087	0.0038	500	500**		
SS01@2.5'	3/28/2023	2.5	<0.0020	<0.0050	<0.0050	<0.010	<0.0050	<0.0050	<0.0038	<500	<50	<50	<50
SS02@2.5'	3/28/2023	2.5	<0.0020	<0.0050	<0.0050	<0.010	<0.0050	<0.0050	<0.0038	<500	<50	<50	<50
SS03@2.5'	3/28/2023	2.5	<0.0020	<0.0050	<0.0050	<0.010	<0.0050	<0.0050	<0.0038	<500	<50	<50	<50
SS04@2.5'	3/28/2023	2.5	<0.0020	<0.0050	<0.0050	<0.010	<0.0050	<0.0050	<0.0038	<500	<50	<50	<50
FS01@4.5'	3/28/2023	4.5	<0.0020	<0.0050	<0.0050	<0.010	<0.0050	<0.0050	<0.0038	0.85	0.85	<50	<50
FS01@7'	3/28/2023	7	<0.0020	<0.0050	<0.0050	<0.010	0.11	<0.0050	0.031	1.7	1.7	<50	<50
AST01@0.5'	3/28/2023	0.5	<0.0020	<0.0050	<0.0050	<0.010	<0.0050	<0.0050	<0.0038	<0.50	<50	<50	<50
SEP01-FL@3'	3/28/2023	3	<0.0020	<0.0050	<0.0050	<0.010	<0.0050	<0.0050	<0.0038	<0.50	<50	<50	<50
SEP01-DL@3'	3/28/2023	3	<0.0020	<0.0050	<0.0050	<0.010	<0.0050	<0.0050	<0.0038	<0.50	<50	<50	<50
BH-01@7'	4/20/2023	7	<0.0020	<0.0050	<0.0050	<0.010	0.078	<0.0050	0.0074	1.2	1.2	<50	<50
BH-01@12'	4/20/2023	12	<0.0020	<0.0050	<0.0050	<0.010	<0.0050	<0.0050	<0.0038	<500	<0.50	<50	<50
BH-02@7'	4/20/2023	7	<0.0020	<0.0050	0.0086	<0.010	0.88	<0.0050	<0.0038	324	18	250	56
BH-02@12'	4/20/2023	12	<0.0020	<0.0050	<0.0050	<0.010	<0.0050	<0.0050	<0.0038	<500	<0.50	<50	<50
BH-03@7'	4/20/2023	7	<0.0020	<0.0050	0.30	1.3	2.5	0.44	0.10	208	48	160	<50
BH-03@12'	4/20/2023	12	<0.0020	<0.0050	<0.0050	<0.010	<0.0050	<0.0050	<0.0038	<500	<0.50	<50	<50
BH-04@8'	4/20/2023	8	<0.0020	<0.0050	<0.0050	<0.010	0.70	<0.0050	0.036	140	10	130	<50
BH-04@15'	4/20/2023	15	<0.0020	<0.0050	<0.0050	<0.010	<0.0050	<0.0050	<0.0038	<500	<0.50	<50	<50
BH-05@7'	4/20/2023	7	<0.0020	<0.0050	<0.0050	<0.010	0.021	<0.0050	0.0063	1.70	1.7	<50	<50
BH-05@12'	4/20/2023	12	<0.0020	<0.0050	<0.0050	<0.010	<0.0050	<0.0050	<0.0038	<500	<0.50	<50	<50
BH-06@7'	4/20/2023	7	<0.0020	<0.0050	<0.0050	<0.010	<0.0050	<0.0050	<0.0038	<500	<0.50	<50	<50
BH-06@12'	4/20/2023	12	<0.0020	<0.0050	<0.0050	<0.010	<0.0050	<0.0050	<0.0038	<500	<0.50	<50	<50
BH07@7-8'	9/26/2023	7-8	<0.0020	<0.0050	<0.0050	<0.010	<0.0050	<0.0050	<0.0038	<500	<0.50	<50	<50
BH07@9-10'	9/26/2023	9-10	<0.0020	<0.0050	<0.0050	<0.010	<0.0050	<0.0050	<0.0038	<500	<0.50	<50	<50
BH07@11-12'	9/26/2023	11-12	<0.0020	<0.0050	<0.0050	<0.010	0.0068	0.016	<0.0038	<500	<0.50	<50	<50
BH07@13-13.5'	9/26/2023	13-13.5	<0.0020	<0.0050	<0.0050	<0.010	<0.0050	<0.0050	<0.0038	<500	<0.50	<50	<50
BH08@7-8'	9/26/2023	7-8	<0.0020	<0.0050	<0.0050	<0.010	<0.0050	<0.0050	<0.0038	110	<0.50	110	<50
BH08@11.5-12.5'	9/26/2023	11.5-12.5	<0.0020	<0.0050	0.027	<0.010	0.10	0.59	0.042	89.0	14	75	<50
BH09@7-8'	9/26/2023	7-8	<0.0020	<0.0050	<0.0050	0.036	0.090	0.077	0.011	1.10	1.1	<50	<50
BH09@11-12'	9/26/2023	11-12	<0.0020	<0.0050	<0.0050	<0.010	<0.0050	<0.0050	<0.0038	<500	<0.50	<50	<50
BH09@13-13.5'	9/26/2023	13-13.5	<0.0020	<0.0050	<0.0050	<0.010	<0.0050	<0.0050	<0.0038	<500	<0.50	<50	<50

TABLE 2
SUMMARY OF VOLATILE ORGANIC SOIL CHEMISTRY DATA
NOBLE ENERGY, INC. - 100322
KILDOW PMC 31-2, WELD COUNTY COLORADO
REM # 25628

Sample ID	Sample Date	Depth (ft)	Benzene (mg/kg)	Toluene (mg/kg)	Ethyl-Benzene (mg/kg)	Xylenes (mg/kg)	1,2,4-Trimethyl-Benzene (mg/kg)	1,3,5-Trimethyl-Benzene (mg/kg)	Naphthalene (mg/kg)	TPH (mg/kg)	TPH GRO (mg/kg)	TPH DRO (mg/kg)	TPH ORO (mg/kg)
ECMC Table 915-1 Limits (Residential SSL)			1.2	490	5.8	58	30	27	2	500	500**		
ECMC Table 915-1 Limits (Protection of Groundwater SSL)			0.0026	0.69	0.78	9.9	0.0081	0.0087	0.0038	500	500**		
BH10@7-8'	9/26/2023	7-8	<0.0020	<0.0050	<0.0050	<0.010	<0.0050	<0.0050	<0.0038	<500	<0.50	<50	<50
BH10@11-12'	9/26/2023	11-12	<0.0020	<0.0050	<0.0050	<0.010	<0.0050	<0.0050	<0.0038	<500	<0.50	<50	<50
BH09R@9-10'	11/21/2024	9-10	<0.0020	<0.0050	<0.0050	<0.010	<0.0050	<0.0050	<0.0038	<0.50	<50	<50	<50
BH09R@14-15'	11/21/2024	14-15	<0.0020	<0.0050	<0.0050	<0.010	<0.0050	<0.0050	<0.0038	<0.50	<50	<50	<50
BH12@8-9'	11/21/2024	8-9	<0.0020	<0.0050	<0.0050	<0.010	<0.0050	<0.0050	<0.0038	<0.50	<50	<50	<50

1. ** Summation of GRO+DRO+ORO must be less than 500 mg/kg
(<) = Analytical result is less than the indicated laboratory reporting limit.
TPH-GRO = Total petroleum hydrocarbons - gasoline range organics
TPH-DRO = Total petroleum hydrocarbons - diesel range organics
TPH-ORO = Total petroleum hydrocarbons - oil range organics
mg/kg = Milligrams per kilogram
ft. = Feet
bgs = Below ground surface

TABLE 3
SUMMARY OF POLYCYCLIC AROMATIC HYDROCARBON SOIL CHEMISTRY DATA
NOBLE ENERGY, INC. - 100322
KILDOW PMC 31-2, WELD COUNTY COLORADO
REM # 25628

Sample ID	Sample Date	Depth (ft)	Acenaphthene (mg/kg)	Anthracene (mg/kg)	Benzo (a) Anthracene (mg/kg)	Benzo (a) Pyrene (mg/kg)	Benzo (b) Fluoranthene (mg/kg)	Benzo (k) Fluoranthene (mg/kg)	Chrysene (mg/kg)	Dibenzo (a,h) Anthracene (mg/kg)	Fluoranthene (mg/kg)	Fluorene (mg/kg)	Indeno (1,2,3-cd) Pyrene (mg/kg)	Pyrene (mg/kg)	1-Methyl - Naphthalene (mg/kg)	2-Methyl- Naphthalene (mg/kg)
ECMC Table 915-1 Limits (Residential SSL)			360	1800	1.1	0.11	1.1	11	110	0.11	240	240	1.1	180	18	24
ECMC Table 915-1 Limits (Protection of Groundwater SSL)			0.55	5.8	0.011	0.24	0.3	2.9	9	0.096	8.9	0.54	0.98	1.3	0.006	0.019
SS01@2.5'	3/28/2023	2.5	<0.00500	<0.00500	<0.00500	<0.00500	<0.00500	<0.00500	<0.00500	<0.00500	<0.00500	<0.00500	<0.00500	<0.00500	<0.00500	<0.00500
SS02@2.5'	3/28/2023	2.5	<0.00500	<0.00500	<0.00500	<0.00500	<0.00500	<0.00500	<0.00500	<0.00500	<0.00500	<0.00500	<0.00500	<0.00500	<0.00500	<0.00500
SS03@2.5'	3/28/2023	2.5	<0.00500	<0.00500	<0.00500	<0.00500	<0.00500	<0.00500	<0.00500	<0.00500	<0.00500	<0.00500	<0.00500	<0.00500	<0.00500	<0.00500
SS04@2.5'	3/28/2023	2.5	<0.00500	<0.00500	<0.00500	<0.00500	<0.00500	<0.00500	<0.00500	<0.00500	<0.00500	<0.00500	<0.00500	<0.00500	<0.00500	<0.00500
FS01@4.5'	3/28/2023	4.5	<0.00500	<0.00500	<0.00500	<0.00500	<0.00500	<0.00500	<0.00500	<0.00500	<0.00500	<0.00500	<0.00500	<0.00500	<0.00500	<0.00500
FS01@7'	3/28/2023	7	<0.00500	<0.00500	<0.00500	<0.00500	<0.00500	<0.00500	<0.00500	<0.00500	<0.00500	<0.00500	<0.00500	<0.00500	<0.00500	<0.00500
AST01@0.5'	3/28/2023	0.5	<0.00500	<0.00500	<0.00500	<0.00500	<0.00500	<0.00500	<0.00500	<0.00500	<0.00500	<0.00500	<0.00500	<0.00500	<0.00500	<0.00500
SEP01-FL@3'	3/28/2023	3	<0.00500	<0.00500	<0.00500	<0.00500	<0.00500	<0.00500	<0.00500	<0.00500	<0.00500	<0.00500	<0.00500	<0.00500	<0.00500	<0.00500
SEP01-DL@3'	3/28/2023	3	<0.00500	<0.00500	<0.00500	<0.00500	<0.00500	<0.00500	<0.00500	<0.00500	<0.00500	<0.00500	<0.00500	<0.00500	<0.00500	<0.00500
BH-01@7'	4/20/2023	7	<0.00500	<0.00500	<0.00500	<0.00500	<0.00500	<0.00500	<0.00500	<0.00500	<0.00500	<0.00500	<0.00500	<0.00500	0.0107	0.0399
BH-01@12'	4/20/2023	12	<0.00500	<0.00500	<0.00500	<0.00500	<0.00500	<0.00500	<0.00500	<0.00500	<0.00500	<0.00500	<0.00500	<0.00500	<0.00500	<0.00500
BH-02@7'	4/20/2023	7	<0.00500	<0.00500	<0.00500	<0.00500	<0.00500	<0.00500	0.0141	<0.00500	<0.00500	<0.00500	<0.00500	<0.00500	<0.00500	<0.00500
BH-02@12'	4/20/2023	12	<0.00500	<0.00500	<0.00500	<0.00500	<0.00500	<0.00500	<0.00500	<0.00500	<0.00500	<0.00500	<0.00500	<0.00500	<0.00500	<0.00500
BH-03@7'	4/20/2023	7	<0.00500	<0.00500	<0.00500	<0.00500	<0.00500	<0.00500	0.00749	<0.00500	<0.00500	0.0266	<0.00500	<0.00500	0.332	0.846
BH-03@12'	4/20/2023	12	<0.00500	<0.00500	<0.00500	<0.00500	<0.00500	<0.00500	<0.00500	<0.00500	<0.00500	<0.00500	<0.00500	<0.00500	<0.00500	<0.00500
BH-04@8'	4/20/2023	8	<0.00500	<0.00500	<0.00500	<0.00500	<0.00500	<0.00500	<0.00500	<0.00500	<0.00500	<0.00500	<0.00500	<0.00500	0.0365	0.101
BH-04@15'	4/20/2023	15	<0.00500	<0.00500	<0.00500	<0.00500	<0.00500	<0.00500	<0.00500	<0.00500	<0.00500	<0.00500	<0.00500	<0.00500	<0.00500	<0.00500
BH-05@7'	4/20/2023	7	<0.00500	<0.00500	<0.00500	<0.00500	<0.00500	<0.00500	<0.00500	<0.00500	<0.00500	<0.00500	<0.00500	<0.00500	<0.00500	<0.00500
BH-05@12'	4/20/2023	12	<0.00500	<0.00500	<0.00500	<0.00500	<0.00500	<0.00500	<0.00500	<0.00500	<0.00500	<0.00500	<0.00500	<0.00500	<0.00500	<0.00500
BH-06@7'	4/20/2023	7	<0.00500	<0.00500	<0.00500	<0.00500	<0.00500	<0.00500	<0.00500	<0.00500	<0.00500	<0.00500	<0.00500	<0.00500	<0.00500	<0.00500
BH-06@12'	4/20/2023	12	<0.00500	<0.00500	<0.00500	<0.00500	<0.00500	<0.00500	<0.00500	<0.00500	<0.00500	<0.00500	<0.00500	<0.00500	<0.00500	<0.00500
BH07@7-8'	9/26/2023	7-8	<0.00500	<0.00500	<0.00500	<0.00500	<0.00500	<0.00500	<0.00500	<0.00500	<0.00500	<0.00500	<0.00500	<0.00500	<0.00500	<0.00500
BH07@9-10'	9/26/2023	9-10	<0.00500	<0.00500	<0.00500	<0.00500	<0.00500	<0.00500	<0.00500	<0.00500	<0.00500	0.00734	<0.00500	<0.00500	0.0415	0.118
BH07@11-12'	9/26/2023	11-12	<0.00500	<0.00500	<0.00500	<0.00500	<0.00500	<0.00500	<0.00500	<0.00500	<0.00500	<0.00500	<0.00500	<0.00500	<0.00500	<0.00500
BH07@13-13.5'	9/26/2023	13-13.5	<0.00500	<0.00500	<0.00500	<0.00500	<0.00500	<0.00500	<0.00500	<0.00500	<0.00500	<0.00500	<0.00500	<0.00500	<0.00500	<0.00500
BH08@7-8'	9/26/2023	7-8	<0.00500	<0.00500	<0.00500	<0.00500	<0.00500	<0.00500	<0.00500	<0.00500	<0.00500	<0.00500	<0.00500	<0.00500	0.0771	0.164
BH08@11.5-12.5'	9/26/2023	11.5-12.5	<0.00500	<0.00500	<0.00500	<0.00500	<0.00500	<0.00500	<0.00500	<0.00500	<0.00500	<0.00500	<0.00500	<0.00500	<0.00500	0.00563
BH09@7-8'	9/26/2023	7-8	<0.00500	<0.00500	<0.00500	<0.00500	<0.00500	<0.00500	<0.00500	<0.00500	<0.00500	<0.00500	<0.00500	<0.00500	<0.00500	<0.00500
BH09@11-12'	9/26/2023	11-12	<0.00500	<0.00500	<0.00500	<0.00500	<0.00500	<0.00500	<0.00500	<0.00500	<0.00500	<0.00500	<0.00500	<0.00500	<0.00500	<0.00500
BH09@13-13.5'	9/26/2023	13-13.5	<0.00500	<0.00500	<0.00500	<0.00500	<0.00500	<0.00500	<0.00500	<0.00500	<0.00500	<0.00500	<0.00500	<0.00500	<0.00500	<0.00500
BH10@7-8'	9/26/2023	7-8	<0.00500	<0.00500	<0.00500	<0.00500	<0.00500	<0.00500	<0.00500	<0.00500	<0.00500	<0.00500	<0.00500	<0.00500	<0.00500	<0.00500
BH10@11-12'	9/26/2023	11-12	<0.00500	<0.00500	<0.00500	<0.00500	<0.00500	<0.00500	<0.00500	<0.00500	<0.00500	<0.00500	<0.00500	<0.00500	<0.00500	<0.00500
BH09R@9-10'	11/21/2024	9-10	<0.00500	<0.00500	<0.00500	<0.00500	<0.00500	<0.00500	<0.00500	<0.00500	<0.00500	<0.00500	<0.00500	<0.00500	<0.00500	<0.00500
BH09R@14-15'	11/21/2024	14-15	<0.00500	<0.00500	<0.00500	<0.00500	<0.00500	<0.00500	<0.00500	<0.00500	<0.00500	<0.00500	<0.00500	<0.00500	<0.00500	<0.00500
BH12@8-9'	11/21/2024	8-9	<0.00500	<0.00500	<0.00500	<0.00500	<0.00500	<0.00500	<0.00500	<0.00500	<0.00500	<0.00500	<0.00500	<0.00500	<0.00500	<0.00500

(<) = Analytical result is less than the indicated laboratory reporting limit.

mg/kg = Milligrams per kilogram

ft. = Feet

bgs = Below ground surface

TABLE 4
SUMMARY OF SOIL SUITABILITY FOR RECLAMATION
NOBLE ENERGY, INC. - 100322
KILDOW PMC 31-2, WELD COUNTY COLORADO
REM # 25628

Sample ID	Sample Date	Depth (ft)	pH (Standard Units)	EC (mmhos/cm)	SAR (Standard Units)	Boron (mg/L)
ECMC Table 915-1 Soil Suitability Limits			6 - 8.3	<4	<6	2
SS01@2.5'	3/28/2023	2.5	7.82	0.0438	0.281	0.0824
SS02@2.5'	3/28/2023	2.5	7.82	0.0807	0.383	0.0805
SS03@2.5'	3/28/2023	2.5	7.57	0.211	0.274	0.118
SS04@2.5'	3/28/2023	2.5	7.26	0.0166	0.170	0.113
FS01@4.5'	3/28/2023	4.5	7.85	0.467	0.489	0.308
FS01@7'	3/28/2023	7	8.22	7.03	1.14	1.81
AST01@0.5'	3/28/2023	0.5	8.13	0.0871	0.200	0.102
SEP01-FL@3'	3/28/2023	3	7.87	0.110	0.345	0.0983
SEP01-DL@3'	3/28/2023	3	8.10	0.0270	0.256	0.0639
BH-01@7'	4/20/2023	7	8.52	9.99	1.79	<0.0100
BH-01@12'	4/20/2023	12	8.28	8.20	2.74	1.60
BH-02@7'	4/20/2023	7	7.99	2.00	0.667	1.10
BH-02@12'	4/20/2023	12	8.09	8.28	1.81	1.57
BH-03@7'	4/20/2023	7	8.84	5.09	0.712	1.46
BH-03@12'	4/20/2023	12	8.38	1.30	3.05	1.48
BH-04@8'	4/20/2023	8	8.44	9.02	1.76	2.02
BH-04@15'	4/20/2023	15	7.89	1.52	1.18	0.957
BH-05@7'	4/20/2023	7	8.37	7.00	2.16	2.52
BH-05@12'	4/20/2023	12	8.14	8.36	2.01	1.43
BH-06@7'	4/20/2023	7	7.97	1.05	0.691	2.02
BH-06@12'	4/20/2023	12	8.38	8.69	1.54	0.441
BH07@7-8'	9/26/2023	7-8	7.58	0.250	NA	<2.00
BH07@9-10'	9/26/2023	9-10	8.81	3.36	NA	<2.00
BH07@11-12'	9/26/2023	11-12	8.11	8.18	NA	<2.00
BH07@13-13.5'	9/26/2023	13-13.5	8.38	6.62	NA	<2.00
BH08@7-8'	9/26/2023	7-8	8.85	4.24	NA	<2.00
BH08@11.5-12.5'	9/26/2023	11.5-12.5	8.63	5.47	NA	<2.00

TABLE 4
SUMMARY OF SOIL SUITABILITY FOR RECLAMATION
NOBLE ENERGY, INC. - 100322
KILDOW PMC 31-2, WELD COUNTY COLORADO
REM # 25628

Sample ID	Sample Date	Depth (ft)	pH (Standard Units)	EC (mmhos/cm)	SAR (Standard Units)	Boron (mg/L)
ECMC Table 915-1 Soil Suitability Limits			6 - 8.3	<4	<6	2
BH09@7-8'	9/26/2023	7-8	8.66	2.41	NA	<2.00
BH09@11-12'	9/26/2023	11-12	7.93	5.54	NA	<2.00
BH09@13-13.5'	9/26/2023	13-13.5	7.70	6.17	NA	<2.00
BH10@7-8'	9/26/2023	7-8	8.69	4.33	NA	<2.00
BH10@11-12'	9/26/2023	11-12	7.74	6.81	NA	<2.00
BH09R@9-10'	11/21/2024	9-10	8.81	0.320	1.56	<2.00
BH09R@14-15'	11/21/2024	14-15	8.45	0.605	2.77	<2.00
BH12@8-9'	11/21/2024	8-9	8.51	0.265	0.608	<2.00
BG01@7'	3/28/2023	7	8.79	2.83	0.673	0.374
BG01@2.5'	3/28/2023	2.5	7.64	5.55	5.21	0.0682
BG01@4.5'	3/28/2023	4.5	8.97	5.72	1.02	0.569
BG01@7-8'	9/26/2023	7-8	8.32	4.24	NA	<2.00
BG01@11-12'	9/26/2023	11-12	7.89	5.88	NA	<2.00
BG02@7-8'	9/26/2023	7-8	8.43	4.52	NA	<2.00
BG02@11-12'	9/26/2023	11-12	8.00	5.37	NA	<2.00
BG03@7-8'	9/26/2023	7-8	7.80	4.55	NA	<2.00
BG03@11-12'	9/26/2023	11-12	7.95	5.33	NA	<2.00
BG04@7-8'	9/26/2023	7-8	7.71	4.16	NA	<2.00
BG04@11-12'	9/26/2023	11-12	7.97	5.42	NA	<2.00
BG05@7-8'	9/26/2023	7-8	8.71	3.73	NA	<2.00
BG05@11-12'	9/26/2023	11-12	7.94	6.51	NA	<2.00
Maximum Background Concentration			8.97	5.72	5.21	0.569

1. **Bold** faced values exceed the ECMC Table 915-1 limit(s), but are within background concentrations.
2. **Bold** faced values exceed the ECMC Table 915-1 limit(s) and native background concentrations.
3. Brown highlighted soil analytical values indicate a regulatory exceedance.

NA - Not analyzed

TABLE 5
SUMMARY OF METALS IN SOIL CHEMISTRY DATA
NOBLE ENERGY, INC. - 100322
KILDOW PMC 31-2, WELD COUNTY COLORADO
REM # 25628

Sample ID	Sample Date	Depth (ft)	Arsenic (mg/kg)	Barium (mg/kg)	Cadmium (mg/kg)	Chromium (VI) (mg/kg)	Copper (mg/kg)	Lead (mg/kg)	Nickel (mg/kg)	Selenium (mg/kg)	Silver (mg/kg)	Zinc (mg/kg)
ECMC Table 915-1 Limits (Residential SSL)			0.68	15000	71	0.3	3100	400	1500	390	390	23000
ECMC Table 915-1 Limits (Protection of Groundwater SSL)			0.29	82	0.38	0.00067	46	14	26	0.26	0.8	370
FS01@7'	3/28/2023	7'	3.190	54.6	1.73	<0.30*	8.90	16.0	11.0	0.778	0.0823	52.7
BH-01@7'	4/20/2023	7	3.64	66.7	1.40	<0.30*	11.8	22.1	18.7	0.877	0.0630	65.9
BH-01@12'	4/20/2023	12	1.59	11.4	<0.244	<0.30*	9.72	10.2	2.40	<0.260	0.0581	12.2
BH-02@7'	4/20/2023	7	3.11	118	0.771	<0.30*	9.29	14.5	7.51	0.438	0.0445	36.4
BH-02@12'	4/20/2023	12	44.9	20.9	0.470	<0.30*	17.8	12.5	4.50	0.651	0.0993	63.0
BH-03@7'	4/20/2023	7	6.82	53.5	0.362	<0.30*	8.42	12.5	6.29	0.515	0.0458	42.7
BH-03@12'	4/20/2023	12	0.745	14.1	<0.259	<0.30*	10.0	10.5	2.70	0.277	0.0605	10.6
BH-04@8'	4/20/2023	8	11.3	16.9	0.315	<0.30*	10.8	14.8	9.67	0.627	0.0416	36.8
BH-04@15'	4/20/2023	15	1.52	30.3	<0.242	<0.30*	7.75	10.3	2.20	<0.260	0.0416	14.0
BH-05@7'	4/20/2023	7	4.63	47.2	0.704	<0.30*	13.5	<0.246	11.7	0.707	0.0762	52.3
BH-05@12'	4/20/2023	12	2.37	12.2	<0.239	<0.30*	12.3	6.99	2.90	0.412	0.0527	27.5
BH-06@7'	4/20/2023	7	2.51	249	0.612	<0.30*	7.28	9.82	7.58	0.472	0.0416	27.4
BH-06@12'	4/20/2023	12	6.63	9.29	<0.240	<0.30*	9.74	11.4	2.31	0.287	0.0303	30.5
BH07@7-8'	9/26/2023	7-8	0.739	44.7	<0.200	NA	NA	3.80	NA	<0.260	NA	NA
BH07@9-10'	9/26/2023	9-10	0.823	64.8	<0.200	NA	NA	8.87	NA	0.328	NA	NA
BH07@11-12'	9/26/2023	11-12	1.89	10.8	<0.200	NA	NA	13.1	NA	1.03	NA	NA
BH07@13-13.5'	9/26/2023	13-13.5	1.12	9.82	<0.200	NA	NA	10.9	NA	0.639	NA	NA
BH08@7-8'	9/26/2023	7-8	4.66	17.2	0.437	NA	NA	17.4	NA	1.23	NA	NA
BH08@11.5-12.5'	9/26/2023	11.5-12.5	2.13	16.7	<0.200	NA	NA	12.0	NA	1.09	NA	NA
BH09@7-8'	9/26/2023	7-8	3.33	25.1	<0.200	NA	NA	3.33	NA	<0.260	NA	NA
BH09@11-12'	9/26/2023	11-12	1.53	9.57	0.242	NA	NA	6.26	NA	2.60	NA	NA
BH09@13-13.5'	9/26/2023	13-13.5	3.75	56.6	0.415	NA	NA	15.1	NA	4.34	NA	NA
BH10@7-8'	9/26/2023	7-8	0.837	51.9	2.27	NA	NA	14.2	NA	0.716	NA	NA
BH10@11-12'	9/26/2023	11-12	7.83	139	0.441	NA	NA	38.9	NA	5.16	NA	NA
BH09R@9-10'	11/21/2024	9-10	7.61	99.9	1.03	<0.30*	8.88	10.6	24.8	0.346	0.0424	52.9
BH09R@14-15'	11/21/2024	14-15	5.67	14	0.203	<0.30*	14.5	18.2	1.8	0.287	0.1	13.5
BH12@8-9'	11/21/2024	8-9	4.24	123	0.45	<0.30*	4.74	6.03	7.69	<0.260	0.0414	19.4

TABLE 5
SUMMARY OF METALS IN SOIL CHEMISTRY DATA
NOBLE ENERGY, INC. - 100322
KILDOW PMC 31-2, WELD COUNTY COLORADO
REM # 25628

Sample ID	Sample Date	Depth (ft)	Arsenic (mg/kg)	Barium (mg/kg)	Cadmium (mg/kg)	Chromium (VI) (mg/kg)	Copper (mg/kg)	Lead (mg/kg)	Nickel (mg/kg)	Selenium (mg/kg)	Silver (mg/kg)	Zinc (mg/kg)
ECMC Table 915-1 Limits (Residential SSL)			0.68	15000	71	0.3	3100	400	1500	390	390	23000
ECMC Table 915-1 Limits (Protection of Groundwater SSL)			0.29	82	0.38	0.00067	46	14	26	0.26	0.8	370
BG01@7'	3/28/2023	7	2.98	84.1	0.266	<0.30*	4.72	6.45	6.43	<0.260	0.0211	20.8
BG01@7-8'	9/26/2023	7-8	1.06	197	2.74	NA	NA	39.3	NA	0.969	NA	NA
BG01@11-12'	9/26/2023	11-12	1.43	12.1	<0.200	NA	NA	12.7	NA	0.594	NA	NA
BG02@7-8'	9/26/2023	7-8	0.894	54.2	0.797	NA	NA	23.1	NA	1.13	NA	NA
BG02@11-12'	9/26/2023	11-12	1.39	13.6	0.239	NA	NA	26.3	NA	0.588	NA	NA
BG03@7-8'	9/26/2023	7-8	4.08	16.6	0.289	NA	NA	16.5	NA	0.833	NA	NA
BG03@11-12'	9/26/2023	11-12	1.99	43.3	<0.200	NA	NA	14.7	NA	0.454	NA	NA
BG04@7-8'	9/26/2023	7-8	0.670	12.2	<0.200	NA	NA	10.4	NA	0.351	NA	NA
BG04@11-12'	9/26/2023	11-12	1.89	14.4	<0.200	NA	NA	10.1	NA	0.977	NA	NA
BG05@7-8'	9/26/2023	7-8	1.21	116	0.421	NA	NA	14.8	NA	0.804	NA	NA
BG05@11-12'	9/26/2023	11-12	0.719	12.4	<0.200	NA	NA	13.3	NA	<0.260	NA	NA
1.25x Maximum Background Concentration			5.10	246	3.43	-	5.90	49.1	8.04	1.41	0.0264	26.0

1. **Bold** faced values exceed the ECMC Table 915-1 limit(s), but are within 1.25x background concentrations.
2. **Bold** faced values exceed the ECMC Table 915-1 limit(s) and native background concentrations.
3. Red & blue highlighted soil analytical values indicate an exceedance of the referenced soil screening level (SSL).
4. Non-detect background results accounted for in the highest background concentration by using the reporting limit.

ECMC = Energy & Carbon Management Commission

(<) = Analytical result is less than the indicated laboratory reporting limit.

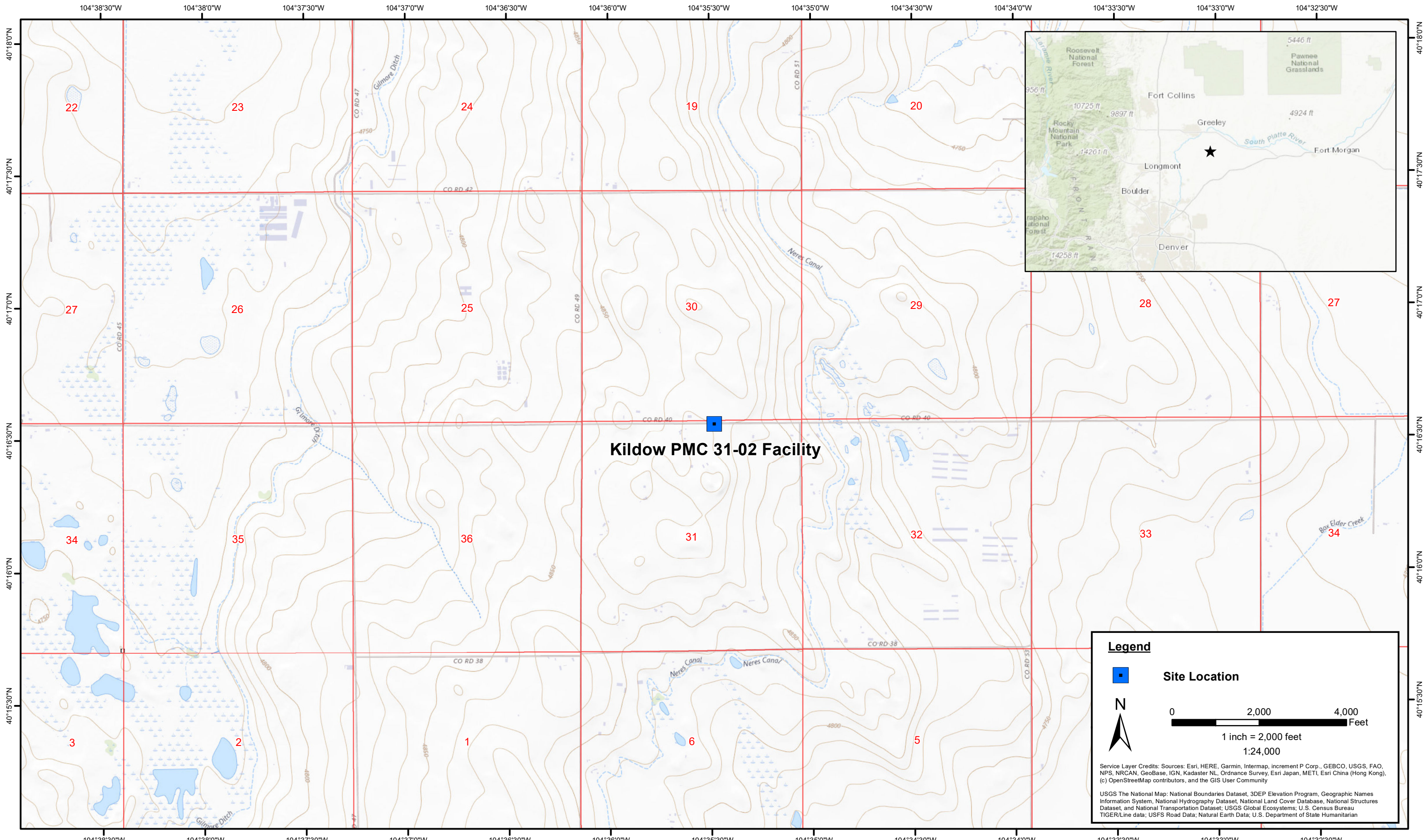
mg/kg = Milligrams per kilogram

ft. = Feet

bgs = Below ground surface

* Indicates laboratory minimum detection limit in excess of SSL

FIGURES



DATE: April 2023
 DESIGNED BY: J. Whritenour
 DRAWN BY: L. Reed



Tasman, Inc.
 6855 W. 119th Ave
 Broomfield, CO 80020

Noble Energy, Inc - DJ Basin
Kildow PMC 31-02 Facility
 NWNE Sec. 31-T4N-R64W
 Weld County, Colorado

Site Location Map

Figure
1



DATE: 04/05/2023

DESIGNED BY: JW

DRAWN BY: HM

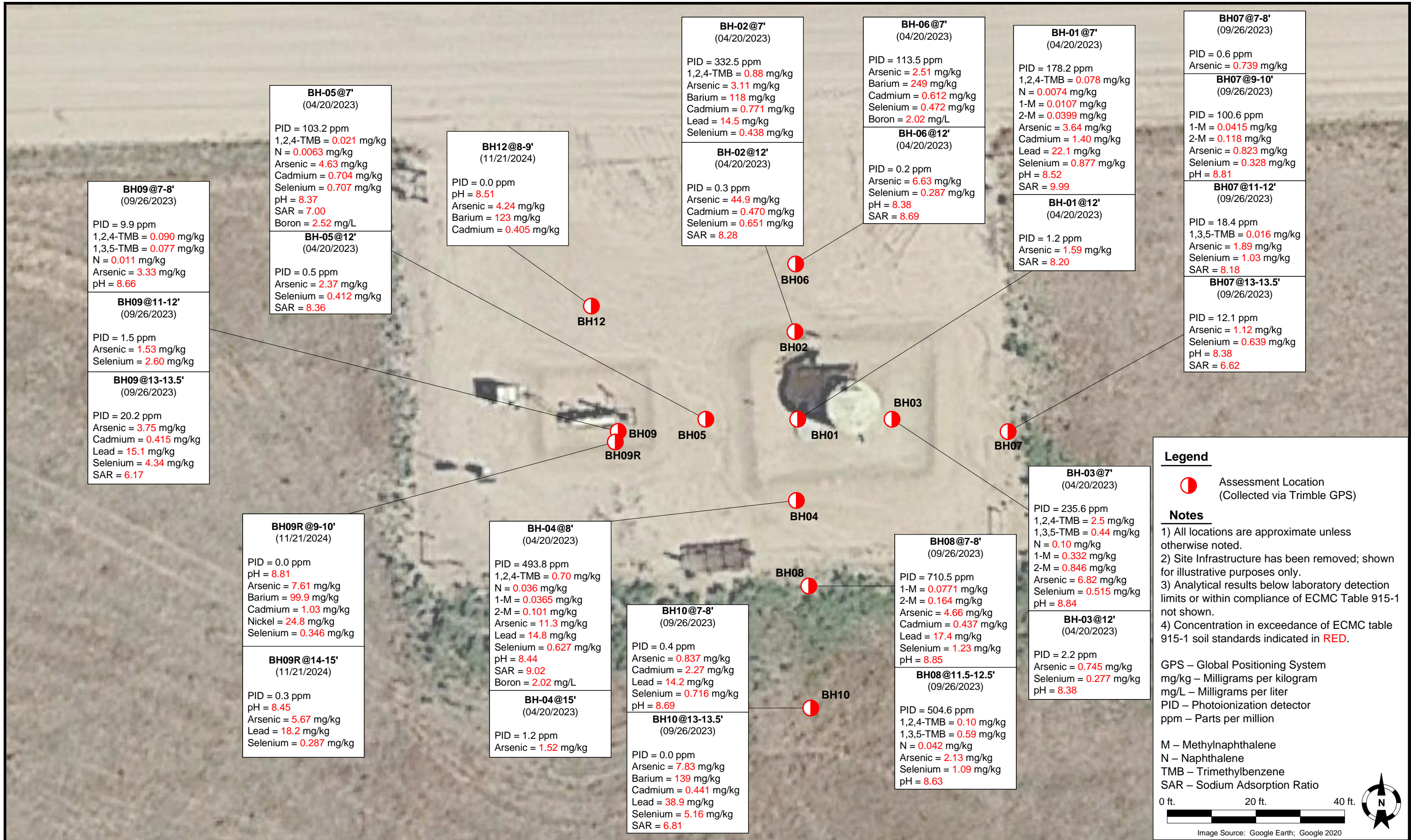
TASMAN
GEOSCIENCES

Tasman Geosciences, Inc.
6855 W 119th Avenue
Broomfield, CO 80020

Noble Energy, Inc. – DJ Basin
Kildow PMC 31-2 FAC
 NWNE, Section 31, Township 4 North, Range 64 West
 Weld County, Colorado

Tank Battery Closure & Soil
 Analytical Results Map
 (03/28/2023)

FIGURE
2



BH09@7-8'
(09/26/2023)

PID = 9.9 ppm
 1,2,4-TMB = 0.090 mg/kg
 1,3,5-TMB = 0.077 mg/kg
 N = 0.011 mg/kg
 Arsenic = 3.33 mg/kg
 pH = 8.66

BH09@11-12'
(09/26/2023)

PID = 1.5 ppm
 Arsenic = 1.53 mg/kg
 Selenium = 2.60 mg/kg

BH09@13-13.5'
(09/26/2023)

PID = 20.2 ppm
 Arsenic = 3.75 mg/kg
 Cadmium = 0.415 mg/kg
 Lead = 15.1 mg/kg
 Selenium = 4.34 mg/kg
 SAR = 6.17

BH-05@7'
(04/20/2023)

PID = 103.2 ppm
 1,2,4-TMB = 0.021 mg/kg
 N = 0.0063 mg/kg
 Arsenic = 4.63 mg/kg
 Cadmium = 0.704 mg/kg
 Selenium = 0.707 mg/kg
 pH = 8.37
 SAR = 7.00
 Boron = 2.52 mg/L

BH-05@12'
(04/20/2023)

PID = 0.5 ppm
 Arsenic = 2.37 mg/kg
 Selenium = 0.412 mg/kg
 SAR = 8.36

BH12@8-9'
(11/21/2024)

PID = 0.0 ppm
 pH = 8.51
 Arsenic = 4.24 mg/kg
 Barium = 123 mg/kg
 Cadmium = 0.405 mg/kg

BH-02@7'
(04/20/2023)

PID = 332.5 ppm
 1,2,4-TMB = 0.88 mg/kg
 Arsenic = 3.11 mg/kg
 Barium = 118 mg/kg
 Cadmium = 0.771 mg/kg
 Lead = 14.5 mg/kg
 Selenium = 0.438 mg/kg

BH-02@12'
(04/20/2023)

PID = 0.3 ppm
 Arsenic = 44.9 mg/kg
 Cadmium = 0.470 mg/kg
 Selenium = 0.651 mg/kg
 SAR = 8.28

BH-06@7'
(04/20/2023)

PID = 113.5 ppm
 Arsenic = 2.51 mg/kg
 Barium = 249 mg/kg
 Cadmium = 0.612 mg/kg
 Selenium = 0.472 mg/kg
 Boron = 2.02 mg/L

BH-06@12'
(04/20/2023)

PID = 0.2 ppm
 Arsenic = 6.63 mg/kg
 Selenium = 0.287 mg/kg
 pH = 8.38
 SAR = 8.69

BH-01@7'
(04/20/2023)

PID = 178.2 ppm
 1,2,4-TMB = 0.078 mg/kg
 N = 0.0074 mg/kg
 1-M = 0.0107 mg/kg
 2-M = 0.0399 mg/kg
 Arsenic = 3.64 mg/kg
 Cadmium = 1.40 mg/kg
 Lead = 22.1 mg/kg
 Selenium = 0.877 mg/kg
 pH = 8.52
 SAR = 9.99

BH-01@12'
(04/20/2023)

PID = 1.2 ppm
 Arsenic = 1.59 mg/kg
 SAR = 8.20

BH07@7-8'
(09/26/2023)

PID = 0.6 ppm
 Arsenic = 0.739 mg/kg

BH07@9-10'
(09/26/2023)

PID = 100.6 ppm
 1-M = 0.0415 mg/kg
 2-M = 0.118 mg/kg
 Arsenic = 0.823 mg/kg
 Selenium = 0.328 mg/kg
 pH = 8.81

BH07@11-12'
(09/26/2023)

PID = 18.4 ppm
 1,3,5-TMB = 0.016 mg/kg
 Arsenic = 1.89 mg/kg
 Selenium = 1.03 mg/kg
 SAR = 8.18

BH07@13-13.5'
(09/26/2023)

PID = 12.1 ppm
 Arsenic = 1.12 mg/kg
 Selenium = 0.639 mg/kg
 pH = 8.38
 SAR = 6.62

BH09R@9-10'
(11/21/2024)

PID = 0.0 ppm
 pH = 8.81
 Arsenic = 7.61 mg/kg
 Barium = 99.9 mg/kg
 Cadmium = 1.03 mg/kg
 Nickel = 24.8 mg/kg
 Selenium = 0.346 mg/kg

BH09R@14-15'
(11/21/2024)

PID = 0.3 ppm
 pH = 8.45
 Arsenic = 5.67 mg/kg
 Lead = 18.2 mg/kg
 Selenium = 0.287 mg/kg

BH-04@8'
(04/20/2023)

PID = 493.8 ppm
 1,2,4-TMB = 0.70 mg/kg
 N = 0.036 mg/kg
 1-M = 0.0365 mg/kg
 2-M = 0.101 mg/kg
 Arsenic = 11.3 mg/kg
 Lead = 14.8 mg/kg
 Selenium = 0.627 mg/kg
 pH = 8.44
 SAR = 9.02
 Boron = 2.02 mg/L

BH-04@15'
(04/20/2023)

PID = 1.2 ppm
 Arsenic = 1.52 mg/kg

BH10@7-8'
(09/26/2023)

PID = 0.4 ppm
 Arsenic = 0.837 mg/kg
 Cadmium = 2.27 mg/kg
 Lead = 14.2 mg/kg
 Selenium = 0.716 mg/kg
 pH = 8.69

BH10@13-13.5'
(09/26/2023)

PID = 0.0 ppm
 Arsenic = 7.83 mg/kg
 Barium = 139 mg/kg
 Cadmium = 0.441 mg/kg
 Lead = 38.9 mg/kg
 Selenium = 5.16 mg/kg
 SAR = 6.81

BH08@7-8'
(09/26/2023)

PID = 710.5 ppm
 1-M = 0.0771 mg/kg
 2-M = 0.164 mg/kg
 Arsenic = 4.66 mg/kg
 Cadmium = 0.437 mg/kg
 Lead = 17.4 mg/kg
 Selenium = 1.23 mg/kg
 pH = 8.85

BH08@11.5-12.5'
(09/26/2023)

PID = 504.6 ppm
 1,2,4-TMB = 0.10 mg/kg
 1,3,5-TMB = 0.59 mg/kg
 N = 0.042 mg/kg
 Arsenic = 2.13 mg/kg
 Selenium = 1.09 mg/kg
 pH = 8.63

BH-03@7'
(04/20/2023)

PID = 235.6 ppm
 1,2,4-TMB = 2.5 mg/kg
 1,3,5-TMB = 0.44 mg/kg
 N = 0.10 mg/kg
 1-M = 0.332 mg/kg
 2-M = 0.846 mg/kg
 Arsenic = 6.82 mg/kg
 Selenium = 0.515 mg/kg
 pH = 8.84

BH-03@12'
(04/20/2023)

PID = 2.2 ppm
 Arsenic = 0.745 mg/kg
 Selenium = 0.277 mg/kg
 pH = 8.38

DATE: 01/15/2025

DESIGNED BY: J. Whritenour

DRAWN BY: D. Gray

Tasman, Inc.
 6855 W 119th Avenue
 Broomfield, CO 80020

Noble Energy, Inc. – DJ Basin
Kildow PMC 31-2 Facility
 NWNE, Section 31, Township 4 North, Range 64 West
 Weld County, Colorado

Site Assessment
 Soil Analytical Results Map
 (04/20/2023, 09/26/2023
 & 11/21/2024)

FIGURE
 3



BG01@7-8'
(09/26/2023)

PID = 0.0 ppm
 Arsenic = 1.06 mg/kg
 Barium = 197 mg/kg
 Cadmium = 2.74 mg/kg
 Lead = 39.3 mg/kg
 Selenium = 0.969 mg/kg
 pH = 8.32

BG01@11-12'
(09/26/2023)

PID = 0.0 ppm
 Arsenic = 1.43 mg/kg
 Selenium = 0.594 mg/kg

BG02@7-8'
(09/26/2023)

PID = 0.0 ppm
 Arsenic = 0.894 mg/kg
 Cadmium = 0.797 mg/kg
 Lead = 23.1 mg/kg
 Selenium = 1.13 mg/kg
 pH = 8.43

BG02@11-12'
(09/26/2023)

PID = 0.0 ppm
 Arsenic = 1.39 mg/kg
 Lead = 26.3 mg/kg
 Selenium = 0.588 mg/kg

BG03@7-8'
(09/26/2023)

PID = 0.0 ppm
 Arsenic = 4.08 mg/kg
 Lead = 16.5 mg/kg
 Selenium = 0.833 mg/kg

BG03@11-12'
(09/26/2023)

PID = 0.0 ppm
 Arsenic = 1.99 mg/kg
 Lead = 14.7 mg/kg
 Selenium = 0.454 mg/kg

BG04@7-8'
(09/26/2023)

PID = 0.0 ppm
 Arsenic = 0.670 mg/kg
 Selenium = 0.351 mg/kg

BG04@11-12'
(09/26/2023)

PID = 0.0 ppm
 Arsenic = 1.89 mg/kg
 Selenium = 0.977 mg/kg


BG05@7-8'
(09/26/2023)

PID = 0.0 ppm
 Arsenic = 1.21 mg/kg
 Barium = 116 mg/kg
 Cadmium = 0.421 mg/kg
 Lead = 14.8 mg/kg
 Selenium = 0.804 mg/kg
 pH = 8.71

BG05@11-12'
(09/26/2023)

PID = 0.0 ppm
 Arsenic = 0.719 mg/kg
 SAR = 6.51

Legend

 Assessment Location
(Collected via Trimble GPS)

Notes

- 1) All locations are approximate unless otherwise noted.
- 2) Site Infrastructure has been removed; shown for illustrative purposes only.
- 3) Analytical results below laboratory detection limits or within compliance of ECOM Table 915-1 not shown.

GPS – Global Positioning System
 mg/kg – Milligrams per kilogram
 mg/L – Milligrams per liter
 PID – Photoionization detector
 ppm – Parts per million
 SAR – Sodium Adsorption Ratio

0 ft. 20 ft. 40 ft.

Image Source: Google Earth; Google 2020

DATE:	11/29/2023
DESIGNED BY:	JW
DRAWN BY:	AE



Tasman, Inc.
 6855 W 119th Avenue
 Broomfield, CO 80020

Noble Energy, Inc. – DJ Basin
Kildow PMC 31-2 Facility
 NWNE, Section 31, Township 4 North, Range 64 West
 Weld County, Colorado

Background Soil
 Analytical Results Map
 (09/26/2023)

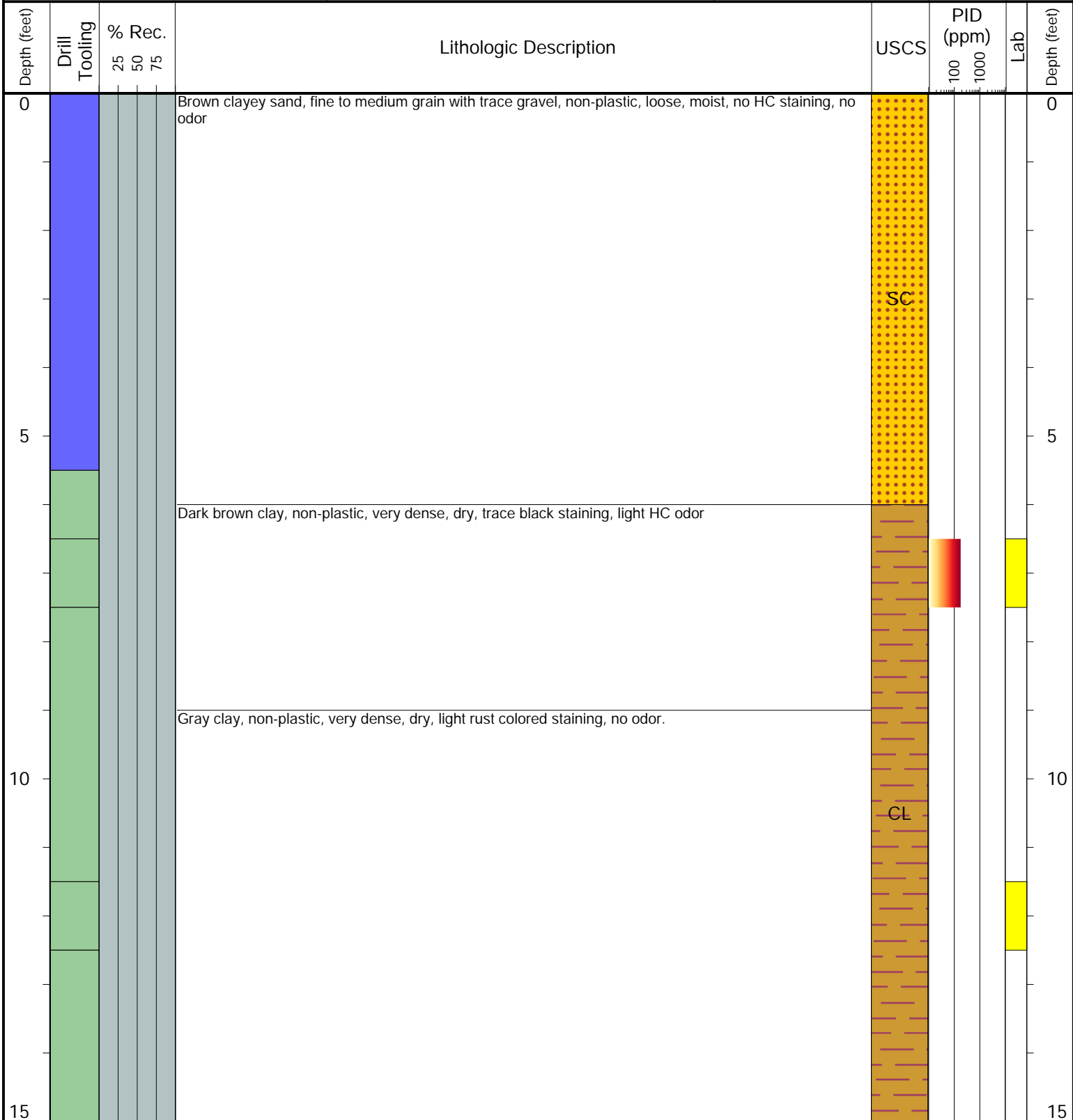
FIGURE
 4

ATTACHMENT B
BORING LOGS



6855 W. 119th Ave.
Broomfield, CO 80020

CLIENT: Noble	Kildow PMC 31-2 Facility
LOGGED BY: Matt Kaczmarek	
PROJECT MANAGER: Jake Whritenour	BORING ID: BH01
DRILLING CONTRACTOR: Site Services	
DRILLING EQUIPMENT: Geoprobe	LOCATION: Weld County, Colorado
DRILL BIT SIZE (INCHES): 2.375"	LATITUDE (NAD 83): 40.2758742534
DATE STARTED - COMPLETED: 4/20/23 - 4/20/23	LONGITUDE (NAD 83): -104.591215746
TOTAL WELL DEPTH (FT. BGS): 15	GROUND ELEVATION (FT. AMSL): NM
DEPTH WATER ENCOUNTERED (FT. BGS): NM	ABANDONMENT METHOD: Bentonite



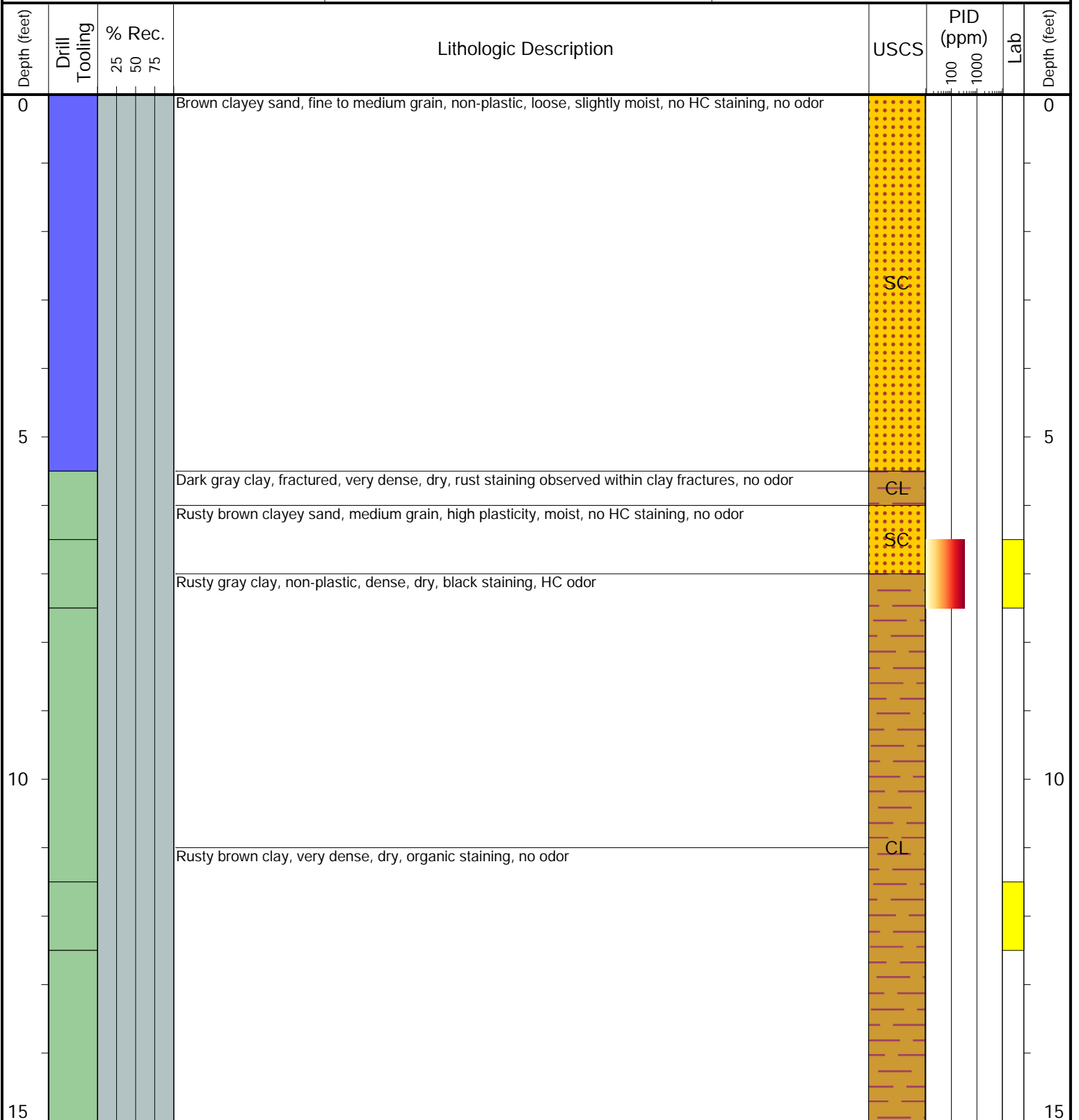
Drilling / Sample Method:		Laboratory Sample Types:	
Macro-Core	Hand Auger	Geotechnical Lab	Geotechnical & Analytical Chemistry Lab
Expendable Well Tip	HydroPunch Groundwater Sampler	Analytical Chemistry Lab	



6855 W. 119th Ave.
Broomfield, CO 80020

CLIENT: Noble
 LOGGED BY: Matt Kaczmarek
 PROJECT MANAGER: Jake Whritenour
 DRILLING CONTRACTOR: Site Services
 DRILLING EQUIPMENT: Geoprobe
 DRILL BIT SIZE (INCHES): 2.375"
 DATE STARTED - COMPLETED: 4/20/23 - 4/20/23
 TOTAL WELL DEPTH (FT. BGS): 15
 DEPTH WATER ENCOUNTERED (FT. BGS): NM

Kildow PMC 31-2 Facility
BORING ID: BH02
 LOCATION: Weld County, Colorado
 LATITUDE (NAD 83): 40.2759277437
 LONGITUDE (NAD 83): -104.59121561
 GROUND ELEVATION (FT. AMSL): NM
 ABANDONMENT METHOD: Bentonite



Drilling / Sample Method:

- Macro-Core
- Hand Auger
- Expendable Well Tip
- HydroPunch Groundwater Sampler

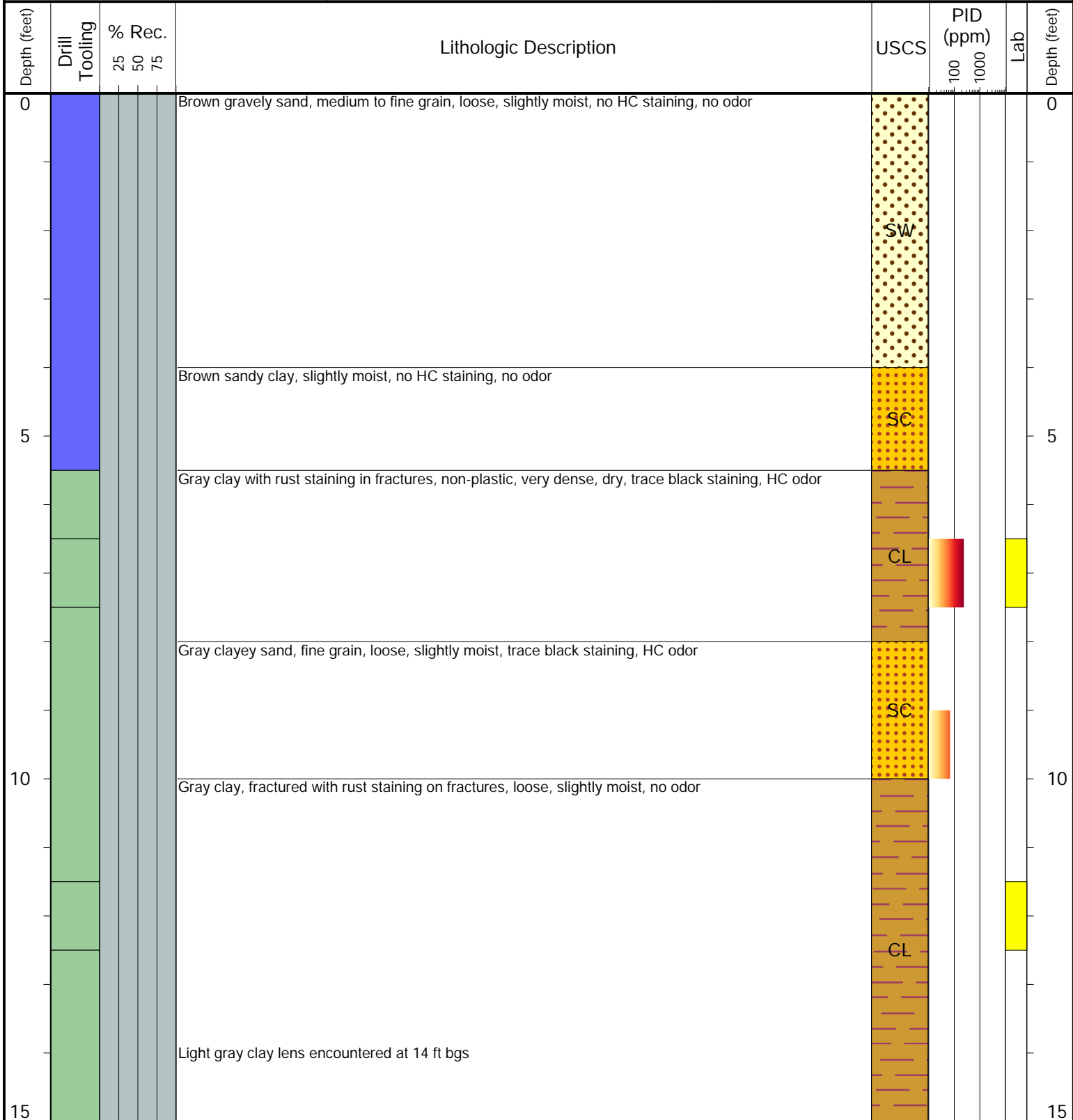
Laboratory Sample Types:

- Geotechnical Lab
- Analytical Chemistry Lab
- Geotechnical & Analytical Chemistry Lab



6855 W. 119th Ave.
Broomfield, CO 80020

CLIENT: Noble	Kildow PMC 31-2 Facility
LOGGED BY: Matt Kaczmarek	
PROJECT MANAGER: Jake Whritenour	BORING ID: BH03
DRILLING CONTRACTOR: Site Services	
DRILLING EQUIPMENT: Geoprobe	LOCATION: Weld County, Colorado
DRILL BIT SIZE (INCHES): 2.375"	LATITUDE (NAD 83): 40.2758736923
DATE STARTED - COMPLETED: 4/20/23 - 4/20/23	LONGITUDE (NAD 83): -104.591137882
TOTAL WELL DEPTH (FT. BGS): 15	GROUND ELEVATION (FT. AMSL): NM
DEPTH WATER ENCOUNTERED (FT. BGS): NM	ABANDONMENT METHOD: Bentonite



Drilling / Sample Method:

- Macro-Core
- Hand Auger
- Expendable Well Tip
- HydroPunch Groundwater Sampler

Laboratory Sample Types:

- Geotechnical Lab
- Analytical Chemistry Lab
- Geotechnical & Analytical Chemistry Lab



6855 W. 119th Ave.
Broomfield, CO 80020

CLIENT: Noble

LOGGED BY: Matt Kaczmarek

PROJECT MANAGER: Jake Whritenour

DRILLING CONTRACTOR: Site Services

DRILLING EQUIPMENT: Geoprobe

DRILL BIT SIZE (INCHES): 2.375"

DATE STARTED - COMPLETED: 4/20/23 - 4/20/23

TOTAL WELL DEPTH (FT. BGS): 15

DEPTH WATER ENCOUNTERED (FT. BGS): NM

Kildow PMC 31-2 Facility

BORING ID: BH04

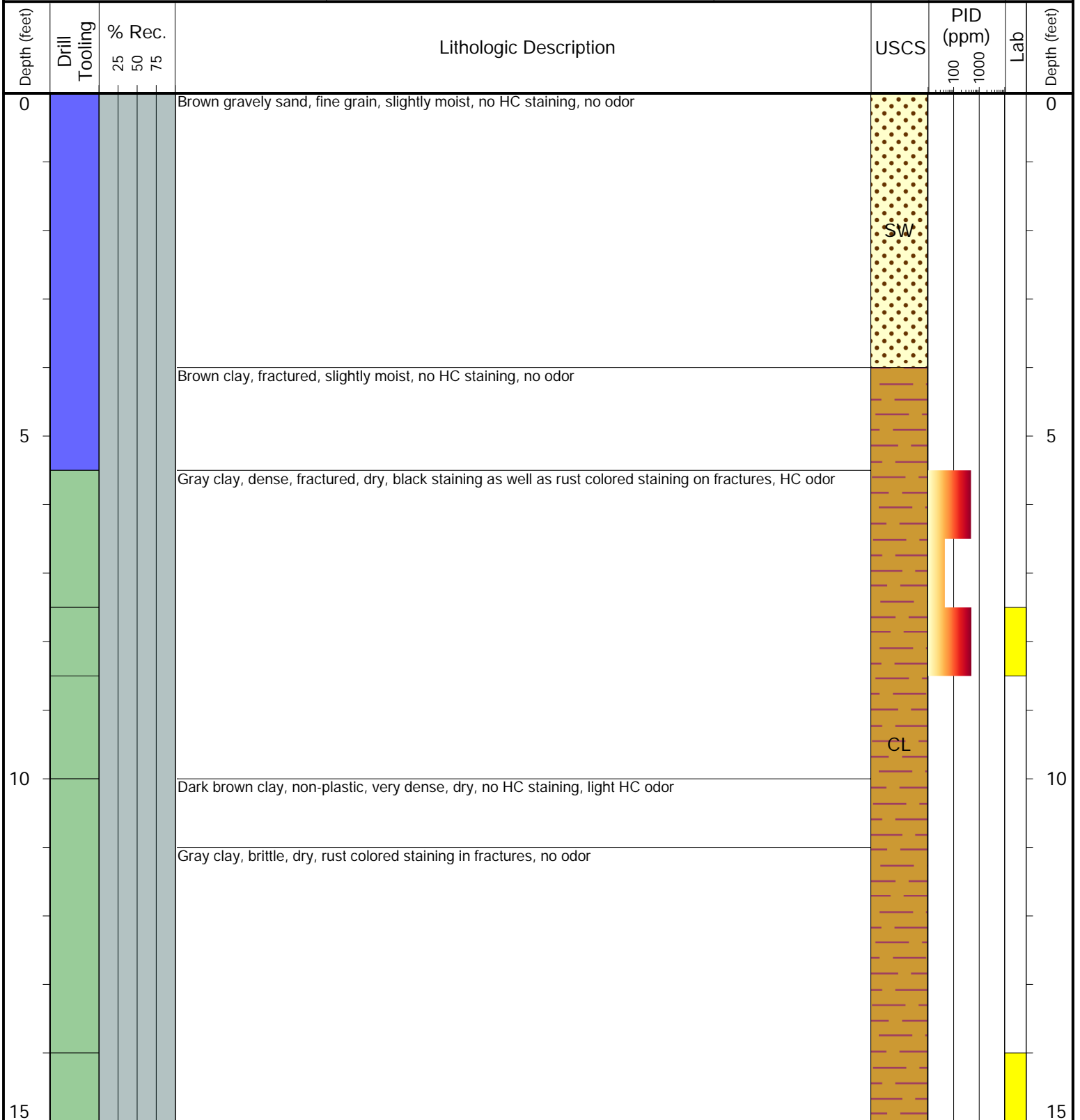
LOCATION: Weld County, Colorado

LATITUDE (NAD 83): 40.275824483

LONGITUDE (NAD 83): -104.591216232

GROUND ELEVATION (FT. AMSL): NM

ABANDONMENT METHOD: Bentonite



Drilling / Sample Method:

- Macro-Core
- Hand Auger
- Expendable Well Tip
- HydroPunch Groundwater Sampler

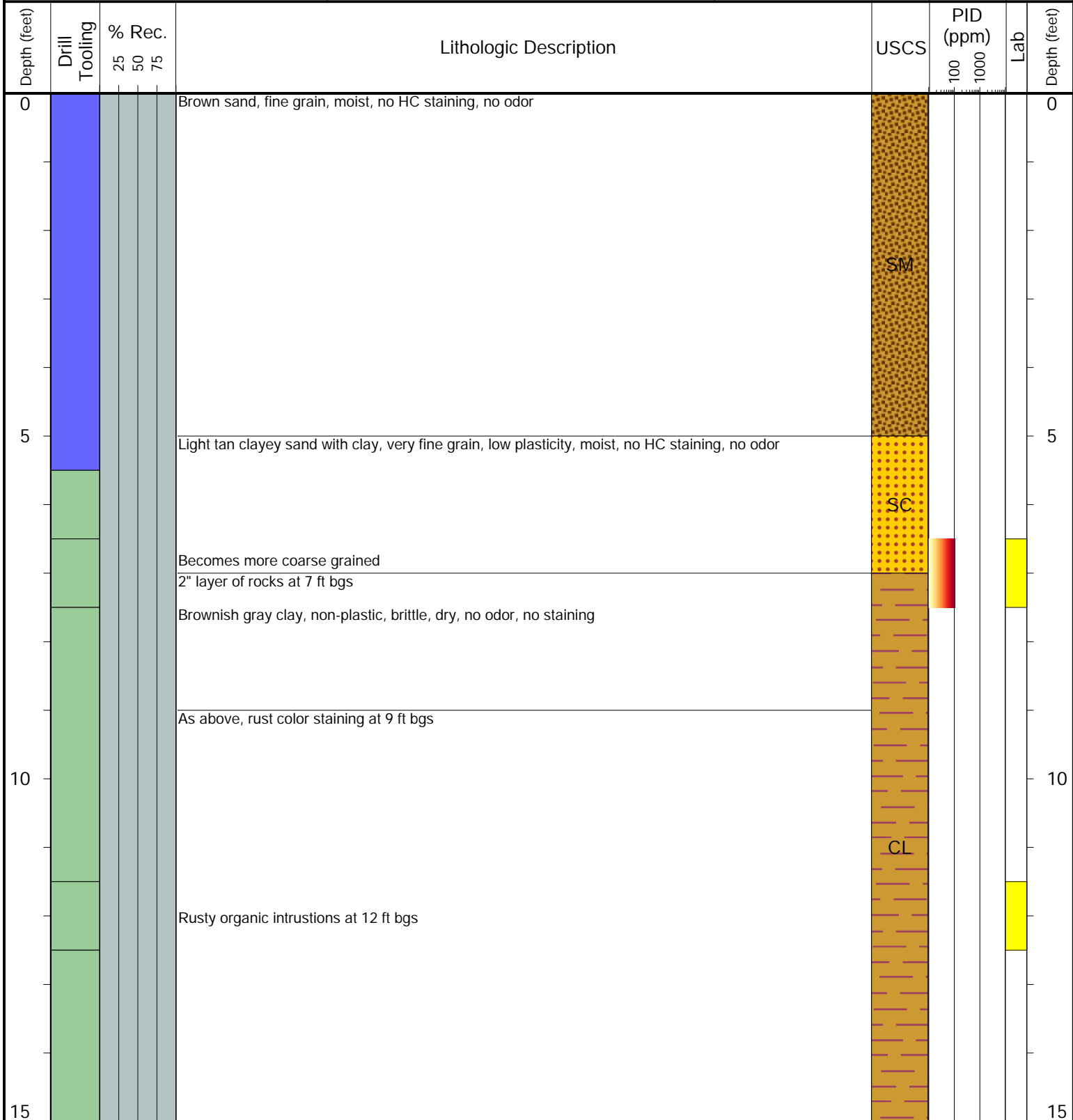
Laboratory Sample Types:

- Geotechnical Lab
- Analytical Chemistry Lab
- Geotechnical & Analytical Chemistry Lab



6855 W. 119th Ave.
Broomfield, CO 80020

CLIENT: Noble	Kildow PMC 31-2 Facility
LOGGED BY: Matt Kaczmarek	
PROJECT MANAGER: Jake Whritenour	BORING ID: BH05
DRILLING CONTRACTOR: Site Services	
DRILLING EQUIPMENT: Geoprobe	LOCATION: Weld County, Colorado
DRILL BIT SIZE (INCHES): 2.375"	LATITUDE (NAD 83): 40.2758743729
DATE STARTED - COMPLETED: 4/20/23 - 4/20/23	LONGITUDE (NAD 83): -104.591290064
TOTAL WELL DEPTH (FT. BGS): 15	GROUND ELEVATION (FT. AMSL): NM
DEPTH WATER ENCOUNTERED (FT. BGS): NM	ABANDONMENT METHOD: Bentonite



Drilling / Sample Method:

- Macro-Core
- Hand Auger
- Expendable Well Tip
- HydroPunch Groundwater Sampler

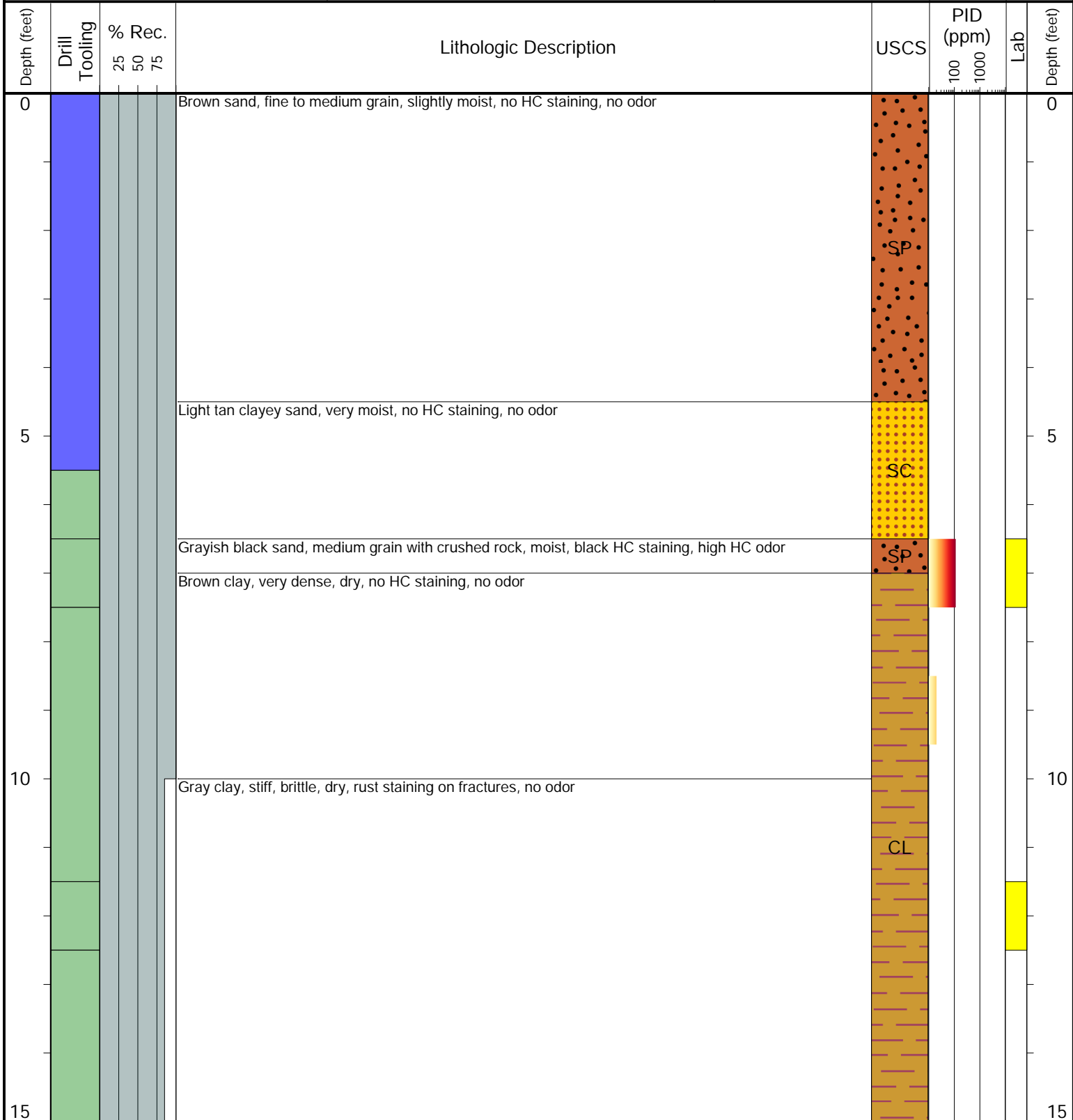
Laboratory Sample Types:

- Geotechnical Lab
- Analytical Chemistry Lab
- Geotechnical & Analytical Chemistry Lab



6855 W. 119th Ave.
Broomfield, CO 80020

CLIENT: Noble	Kildow PMC 31-2 Facility
LOGGED BY: Matt Kaczmarek	
PROJECT MANAGER: Jake Whritenour	BORING ID: BH06
DRILLING CONTRACTOR: Site Services	
DRILLING EQUIPMENT: Geoprobe	LOCATION: Weld County, Colorado
DRILL BIT SIZE (INCHES): 2.375"	LATITUDE (NAD 83): 40.275969
DATE STARTED - COMPLETED: 4/20/23 - 4/20/23	LONGITUDE (NAD 83): -104.591215
TOTAL WELL DEPTH (FT. BGS): 15	GROUND ELEVATION (FT. AMSL): NM
DEPTH WATER ENCOUNTERED (FT. BGS): NM	ABANDONMENT METHOD: Bentonite



Drilling / Sample Method:

- Macro-Core
- Hand Auger
- Expendable Well Tip
- HydroPunch Groundwater Sampler

Laboratory Sample Types:

- Geotechnical Lab
- Analytical Chemistry Lab
- Geotechnical & Analytical Chemistry Lab



6855 W. 119th Ave.
Broomfield, CO 80020

CLIENT: Noble

LOGGED BY: Dennis Gray

PROJECT MANAGER: Jake Whritenour

DRILLING CONTRACTOR: Tasman

DRILLING EQUIPMENT: Geoprobe

DRILL BIT SIZE (INCHES): 2.375"

DATE STARTED - COMPLETED: 9/26/23-9/26/23

TOTAL WELL DEPTH (FT. BGS): 13.5

DEPTH WATER ENCOUNTERED (FT. BGS): NM

Kildow PMC 31-2 Facility

BORING ID: BH07

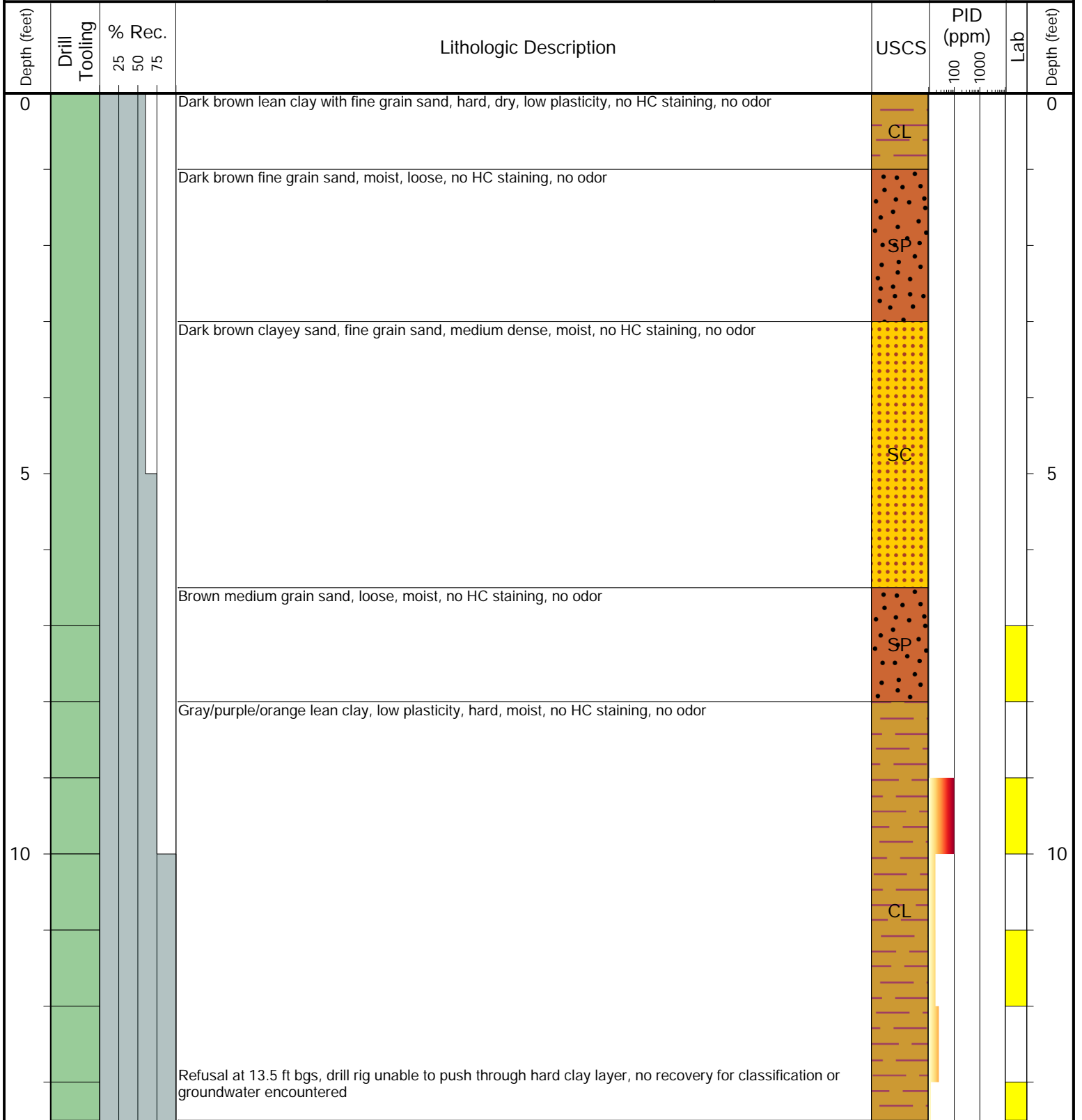
LOCATION: Weld County, Colorado

LATITUDE (NAD 83): 40.2758668416

LONGITUDE (NAD 83): -104.591045296

GROUND ELEVATION (FT. AMSL): NM

ABANDONMENT METHOD: Bentonite



Drilling / Sample Method:

- Macro-Core
- Hand Auger
- Expendable Well Tip
- HydroPunch Groundwater Sampler

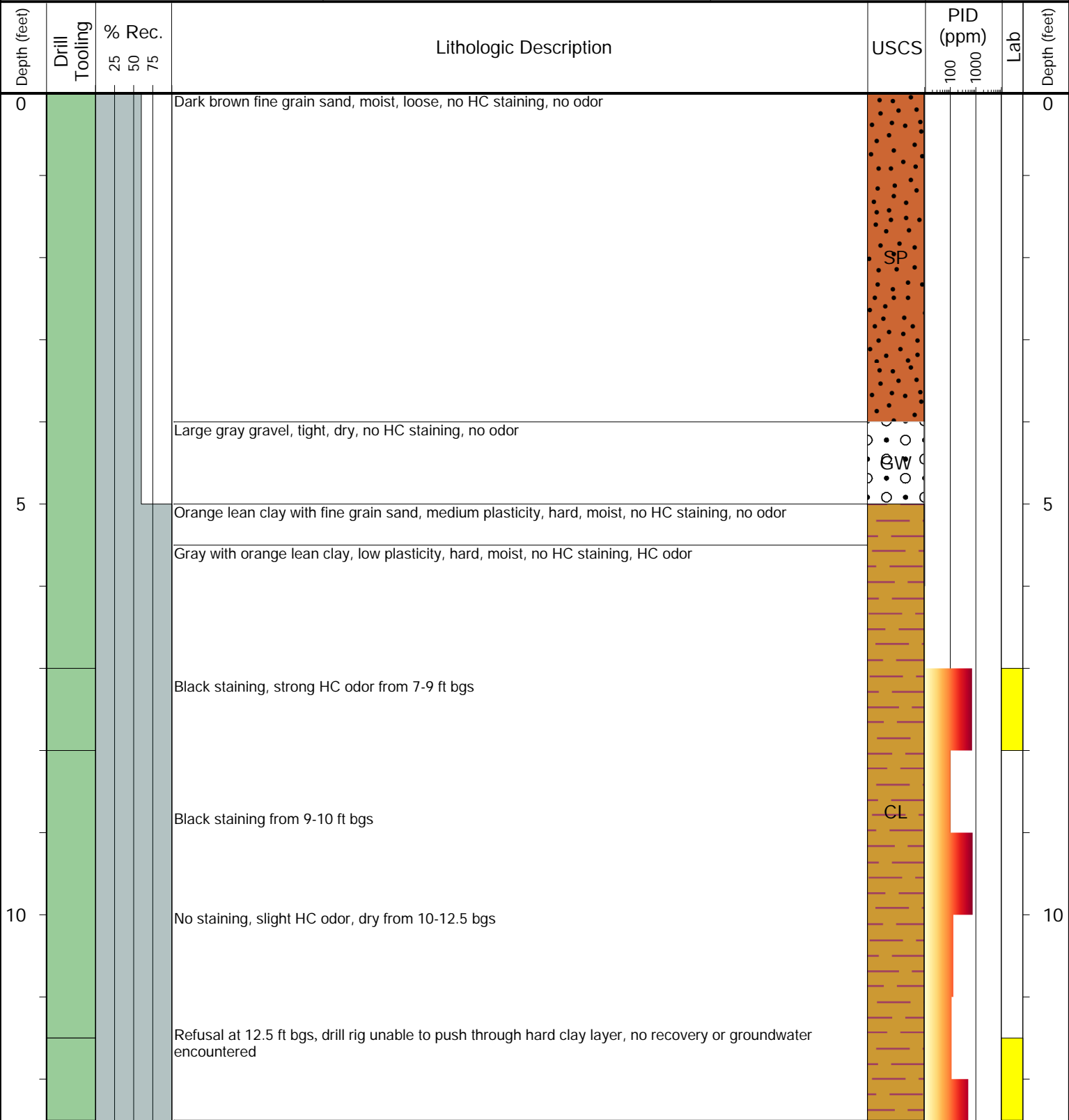
Laboratory Sample Types:

- Geotechnical Lab
- Analytical Chemistry Lab
- Geotechnical & Analytical Chemistry Lab



6855 W. 119th Ave.
Broomfield, CO 80020

CLIENT: Noble	Kildow PMC 31-2 Facility
LOGGED BY: Dennis Gray	
PROJECT MANAGER: Jake Whritenour	BORING ID: BH08
DRILLING CONTRACTOR: Tasman	
DRILLING EQUIPMENT: Geoprobe	LOCATION: Weld County, Colorado
DRILL BIT SIZE (INCHES): 2.375"	LATITUDE (NAD 83): 40.2757699157
DATE STARTED - COMPLETED: 9/26/23-9/26/23	LONGITUDE (NAD 83): -104.591206157
TOTAL WELL DEPTH (FT. BGS): 12.5	GROUND ELEVATION (FT. AMSL): NM
DEPTH WATER ENCOUNTERED (FT. BGS): NM	ABANDONMENT METHOD: Bentonite



Drilling / Sample Method:

- Macro-Core
- Hand Auger
- Expendable Well Tip
- HydroPunch Groundwater Sampler

Laboratory Sample Types:

- Geotechnical Lab
- Analytical Chemistry Lab
- Geotechnical & Analytical Chemistry Lab



6855 W. 119th Ave.
Broomfield, CO 80020

CLIENT: Noble	Kildow PMC 31-2 Facility
LOGGED BY: Dennis Gray	
PROJECT MANAGER: Jake Whritenour	BORING ID: BH09
DRILLING CONTRACTOR: Tasman	
DRILLING EQUIPMENT: Geoprobe	LOCATION: Weld County, Colorado
DRILL BIT SIZE (INCHES): 2.375"	LATITUDE (NAD 83): 40.2758677148
DATE STARTED - COMPLETED: 9/26/23-9/26/23	LONGITUDE (NAD 83): -104.591359932
TOTAL WELL DEPTH (FT. BGS): 13.5	GROUND ELEVATION (FT. AMSL): NM
DEPTH WATER ENCOUNTERED (FT. BGS): NM	ABANDONMENT METHOD: Bentonite



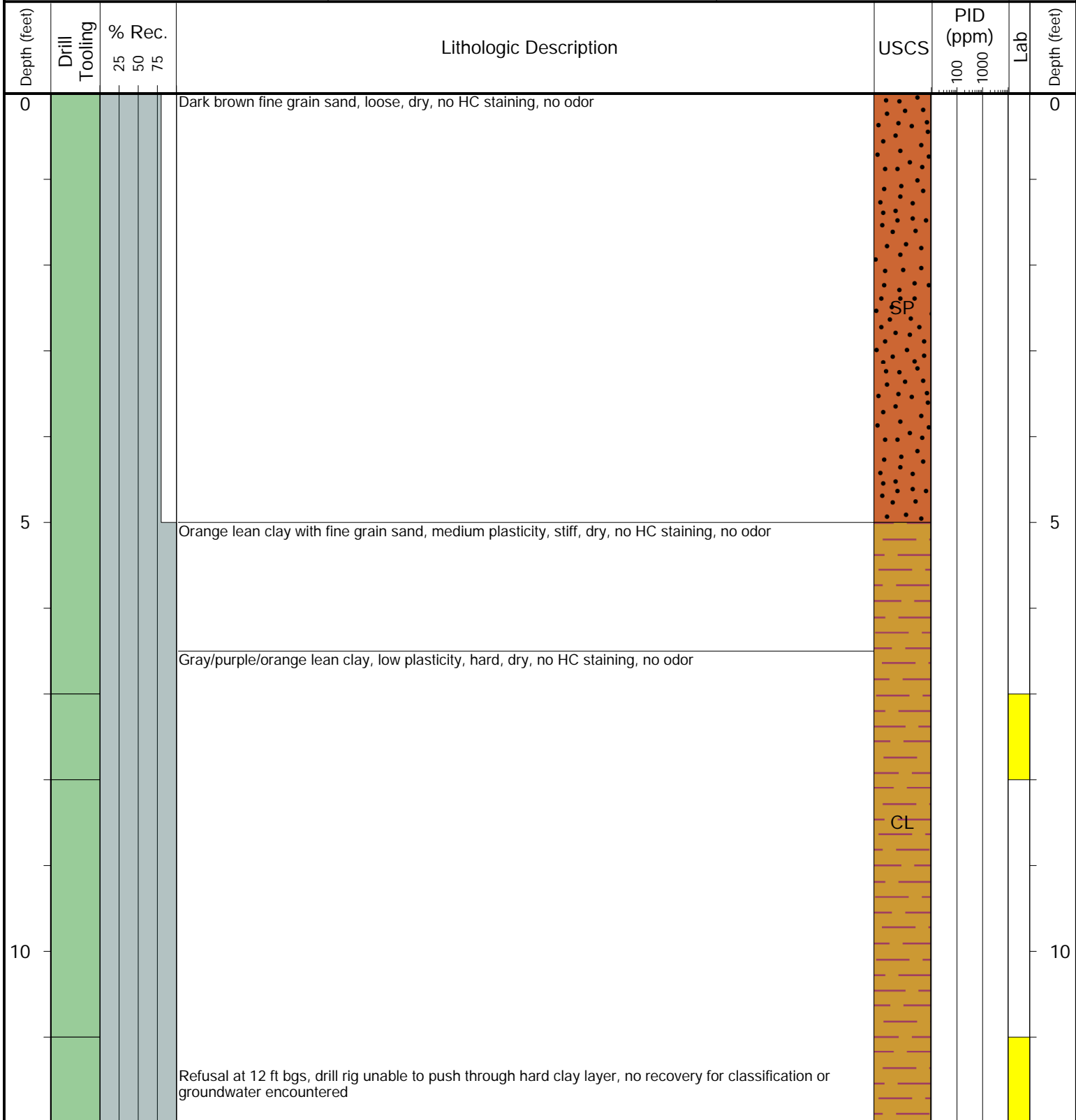
Drilling / Sample Method:

- Macro-Core
- Hand Auger
- HydroPunch Groundwater Sampler
- Geotechnical Lab
- Analytical Chemistry Lab
- Geotechnical & Analytical Chemistry Lab



6855 W. 119th Ave.
Broomfield, CO 80020

CLIENT: Noble	Kildow PMC 31-2 Facility
LOGGED BY: Dennis Gray	
PROJECT MANAGER: Jake Whritenour	BORING ID: BH10
DRILLING CONTRACTOR: Tasman	
DRILLING EQUIPMENT: Geoprobe	LOCATION: Weld County, Colorado
DRILL BIT SIZE (INCHES): 2.375"	LATITUDE (NAD 83): NM
DATE STARTED - COMPLETED: 9/26/23-9/26/23	LONGITUDE (NAD 83): NM
TOTAL WELL DEPTH (FT. BGS): 12	GROUND ELEVATION (FT. AMSL): NM
DEPTH WATER ENCOUNTERED (FT. BGS): NM	ABANDONMENT METHOD: Bentonite



Drilling / Sample Method:

- Macro-Core
- Hand Auger
- Expendable Well Tip
- HydroPunch Groundwater Sampler

Laboratory Sample Types:

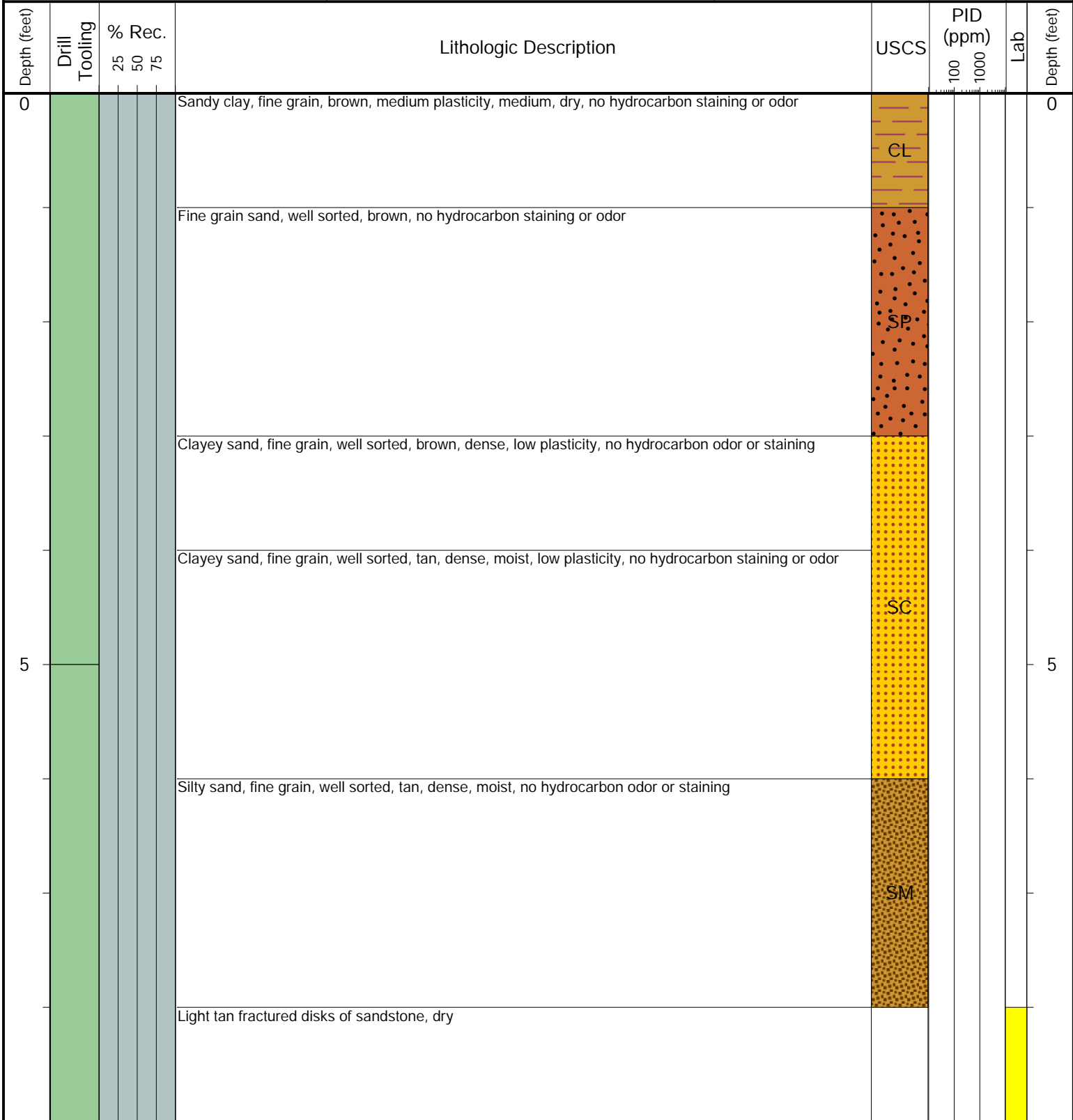
- Geotechnical Lab
- Analytical Chemistry Lab
- Geotechnical & Analytical Chemistry Lab



CLIENT: Noble
LOGGED BY: Dennis Gray
PROJECT MANAGER: Andy Sagen
DRILLING CONTRACTOR: Tasman
DRILLING EQUIPMENT: Powerprobe
DRILL BIT SIZE (INCHES): 2.375
DATE STARTED - COMPLETED: 11/21/24-11/21/24
TOTAL WELL DEPTH (FT. BGS): 15
DEPTH WATER ENCOUNTERED (FT. BGS): NM

Kildow PMC 31-2 Facility
BORING ID: BH12
LOCATION: Weld County, Colorado
LATITUDE (NAD 83): 40.275953
LONGITUDE (NAD 83): -104.591351
GROUND ELEVATION (FT. AMSL): NM
ABANDONMENT METHOD: Native Soil

6855 W. 119th Ave.
Broomfield, CO 80020



Drilling / Sample Method:

- Macro-Core
- Hand Auger
- Expendable Well Tip
- HydroPunch Groundwater Sampler

Laboratory Sample Types:

- Geotechnical Lab
- Analytical Chemistry Lab
- Geotechnical & Analytical Chemistry Lab