



Form PS-102

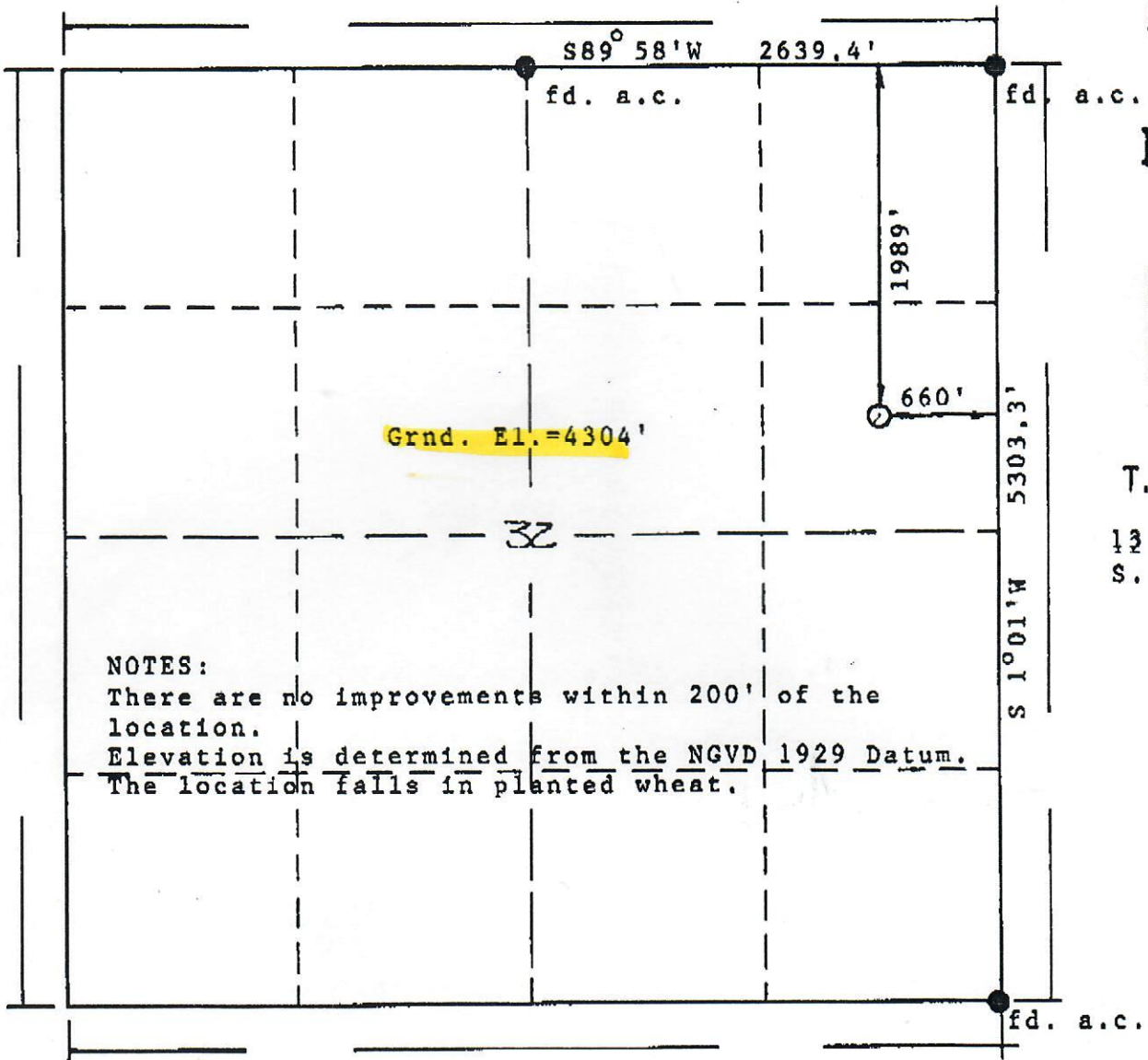
R. 44 W.

SCANNED



00550822

BASIS OF BEARINGS: The north line of the NE $\frac{1}{4}$ of Section
32 assumed S89°58'W.



Scale: 1"=1000'

Powers Elevation, Inc. of Denver, Colorado has in accordance with a request from Pat Ungleich for Mull Drilling Company, Inc. determined the location of Klepper #5

to be 1989' FNL & 660' FEL Section 32, Township 13 South
Range 44 West of the Sixth Principal Meridian,

Cheyenne County, Colorado

I hereby certify that this plat is an accurate representation of a complete survey showing the location of

Klepper #5

Date: November 26, 1993

Licensed Land Surveyor No. 19585

