

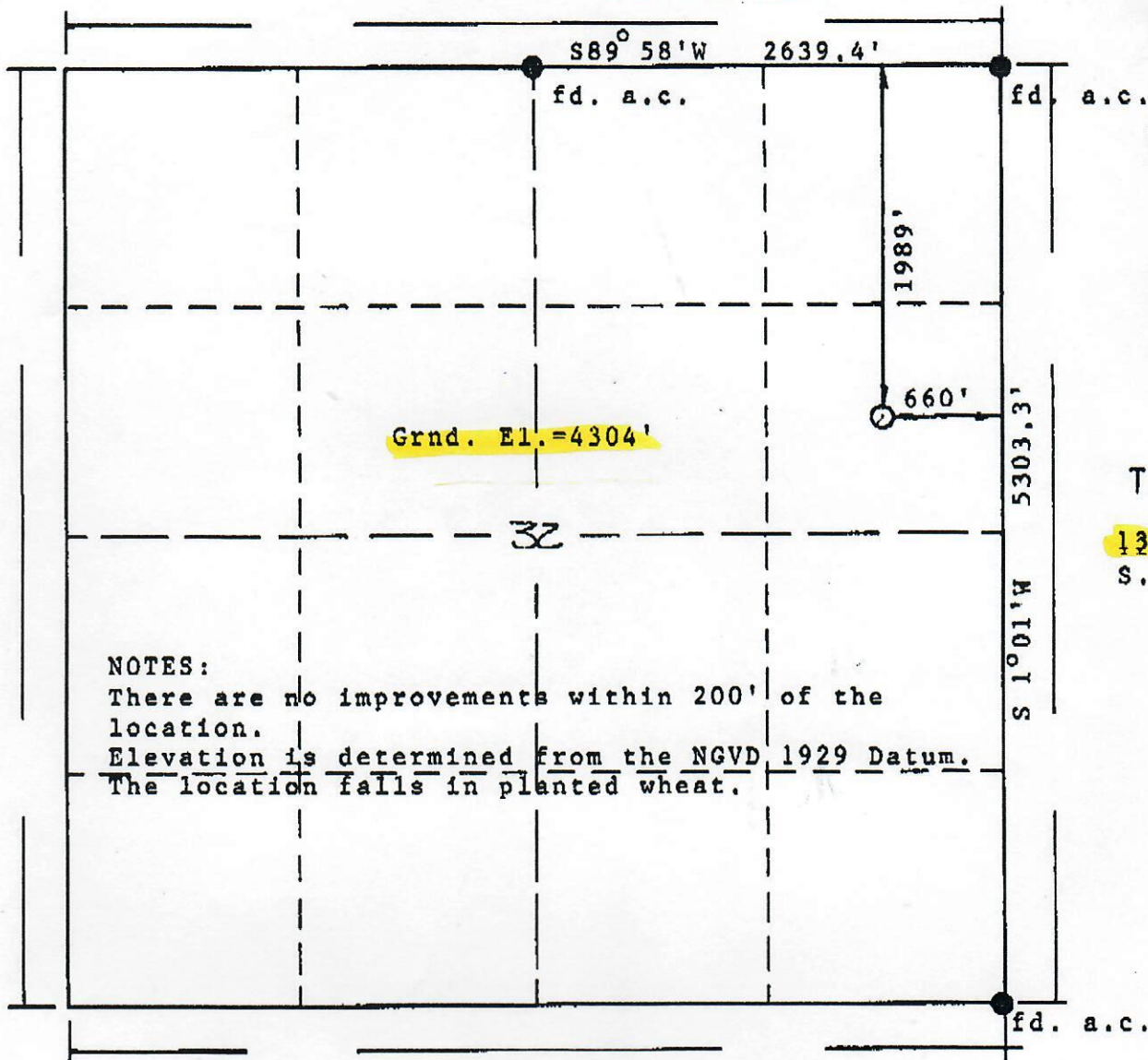


Form PS-102

R. 44 W.

SCANNED

BASIS OF BEARINGS: The north line of the NE $\frac{1}{4}$  of Section  
32 assumed S89°58'W.



## NOTES:

There are no improvements within 200' of the location.

Elevation is determined from the NGVD 1929 Datum.  
 The location falls in planted wheat.

Scale: 1"=1000'

Powers Elevation, Inc. of Denver, Colorado has in accordance with a request from Pat Ungleich for Mull Drilling Company, Inc. determined the location of Klepper #5

to be 1989' FNL &amp; 660' FEL

Section 32, Township 13 South  
 Meridian,

Range 44 West of the Sixth Principal

Cheyenne County, Colorado

I hereby certify that this plat is an accurate representation of a correct survey showing the location of

Klepper #5

Date: November 26, 1993

Licensed Land Surveyor No. 19585

