



00550771

SCANNED

July 14, 1994

Mr. Thom Kerr
Colorado Oil & Gas Conservation Commission
1580 Logan Street, Suite 380
Denver, CO 80203

Subject: Cement Requirements
Townships 13&14 South, Range 44 West
Cheyenne County, Colorado

Dear Thom:

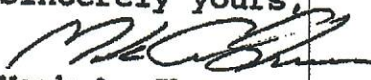
Mull Drilling Company, Inc. is requesting that the requirement to isolate the Dakota and Cheyenne formations with cement behind casing be waived on the Klepper #5, Klepper 'A' #3 and any future wells in Townships 13 & 14 South, Range 44 West. We have attempted to obtain fluid samples of each of these formations, but have found both the formations in this area to be unproductive of fluid.

On October 27, 1992, Mull Drilling Company perforated and swab tested the Dakota formation in the Champlin-Aldrich #2 (NE NE 33-13S-44W) at 1865'-69' in the cleanest part of the Dakota. No fluid was recovered on swab tests, indicating the Dakota reservoir was too poor of quality to produce fluid.

On October 29, 1992, Mull Drilling Company perforated and swab tested the Cheyenne formation in the UPRR-Roth #3 (SW NE 5-14S-44W) at 2128'-32' in the cleanest part of the Cheyenne. No fluid was recovered on swab tests, indicating the Cheyenne reservoir was too poor of quality to produce fluid.

Attached for your information are log sections of the Champlin-Aldrich #2 and UPRR-Roth #3 indicating the intervals perforated and swab tested in each well. Thank you for your timely attention to this matter. If you need any additional information, please give me a call.

Sincerely yours,


Mark A. Shreve
Petroleum Engineer

Attachments

221 N. MAIN • SUITE 300 • P.O. BOX 2758 • WICHITA, KS 67201-2758 • 316 264-6366 • FAX 316 264-6440

GREAT GUNS

R. A. GARD Log

FILE NO.

COMPANY FULL DRILLING COMPANY

WELL UNION PACIFIC R.R. ROTH NO. 3

FIELD

COUNTY CHEYENNE STATE COLORADO

LOCATION: SW NE

OTHER SERVICES

SONIC

SEC 5 TWP 14S RGE 44W

GROUND LEVEL

Bar. 4258'

Elevations:

KB 4267'

DP 4264'

GL 4258'

Log Measured from KELLY BUSHING Ft. Above Permanent Datum

Drilling Measured from KELLY BUSHING

Date 12-20-68

Run No. GANMA

NEUTRON

ONE

GUARD

ONE

CALIPER

Run No.

Depth-Driller

5466'

5466'

5466'

5466'

5466'

5466'

Depth-Lagger

5465'

5465'

5465'

5465'

5465'

5465'

Bottom Lagger Interval

5456'

5464'

5460'

5454'

5454'

5454'

Top Lagger Interval

000'

000'

3600'

3600'

3600'

3600'

3" - Driller

@

@

@

8-5/8" 220'

@

@

3" - Lagger

@

@

@

7-7/8" 220'

@

@

Run Size

7-7/8"

7-7/8"

7-7/8"

7-7/8"

7-7/8"

7-7/8"

Type Fluid in Hole

STARCH MUD

STARCH MUD

STARCH MUD

STARCH MUD

STARCH MUD

STARCH MUD

Density and Viscosity

9.4 54

9.4 54

9.4 54

9.4 54

9.4 54

9.4 54

Oil and Fluid Loss

@

@

@

@

@

@

Source of Sample

PTT

PTT

PTT

PTT

PTT

PTT

Run @ Meter Temp.

@

@

@

@

@

@

Run @ Meter Temp.

@

@

@

@

@

@

Run @ Meter Temp.

@

@

@

@

@

@

Run @ Meter Temp.

@

@

@

@

@

@

Run @ Meter Temp.

@

@

@

@

@

@

Run @ Meter Temp.

@

@

@

@

@

@

Run @ Meter Temp.

@

@

@

@

@

@

Run @ Meter Temp.

@

@

@

@

@

@

Run @ Meter Temp.

@

@

@

@

@

@

Run @ Meter Temp.

@

@

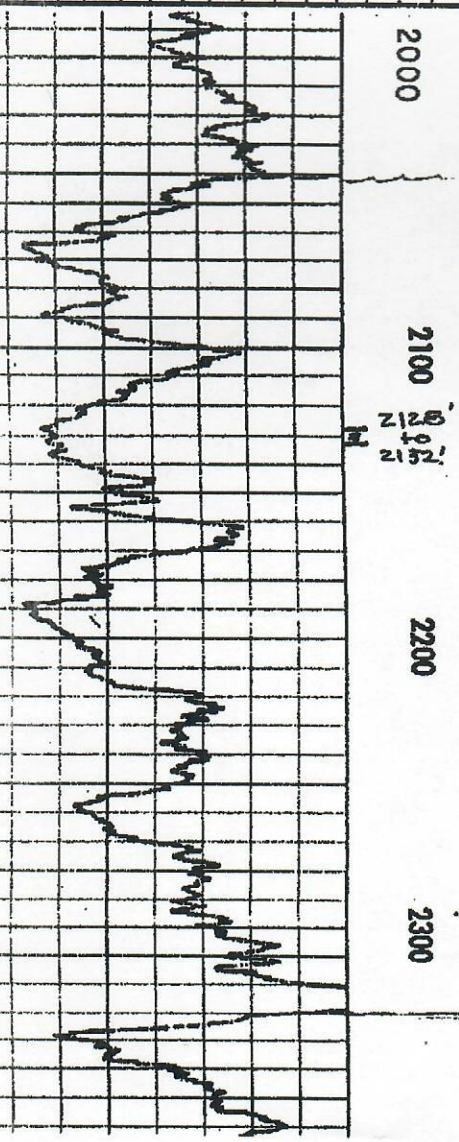
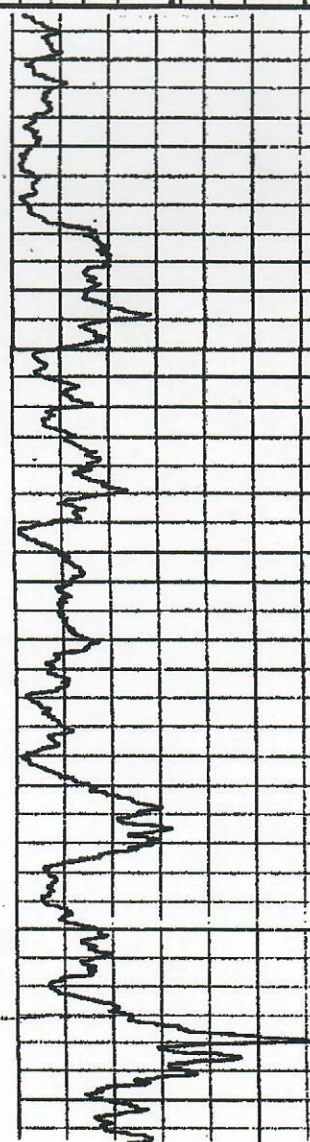
@

@

@

@

4267
2040
2227



2000

2100

2200

2300

2195

2195

2195

Alpha-Log

Radiation Guard Log

COMPANY MULL DRILLING CO. INC.

WELL #2 CHAMPLIN-AIDRICH

FIELD

COUNTY CHEYENNE

STATE

COLORADO

Location

C NE NE

Other Services:

Sec 33 Twp 13 Rge 44W

GROUND LEVEL

Elev. 4268

Elev. K.R. 4278

Log Measured From

K.B. 10

Ft. Above Perm. Datum

Drilling Measured From KELLY BUSHING

D.F. 4268

CL 4268

Date 2/12/74

GAMMA RAY

NEUTRON

GUARD

CALI PER

Run No.

ONE

ONE

ONE

ONE

Depth-Driller

5430

5430

5430

5430

Depth-Logger

5431

5431

5431

5431

Buy Log Inter.

5431

5431

5426

5419

Top Log Inter.

0

0

3700

3700

Logging-Driller

8 5/8 329

@

@

@

Logging-Logger

7 7/8

Bit Size

7 7/8

Type Fluid in Hole

Salt Gel

Dens. | Visc.

9.4 50

pH | Fluid Loss

6.4 4.8ml

Source of Sample

Pit

Ra @ Meas. Temp.

.13 @ 75°F

@

@

@

Ra @ Meas. Temp.

.1 @ 75°F

@

@

@

Ra @ Meas. Temp.

.18 @ 75°F

@

@

@

Source: Ra Ra

Charts

Ra @ BHT

.079 @ 123°F

@

@

@

Time Since Circ.

4 hours

Max. Rec. Temp.

123°F

Equip. Location

E-3 | GB

Recorded By

STILLER

Witnessed By

D. COOK

00

1800

1900

2000

DAR 245' 245' 245'

1m

