



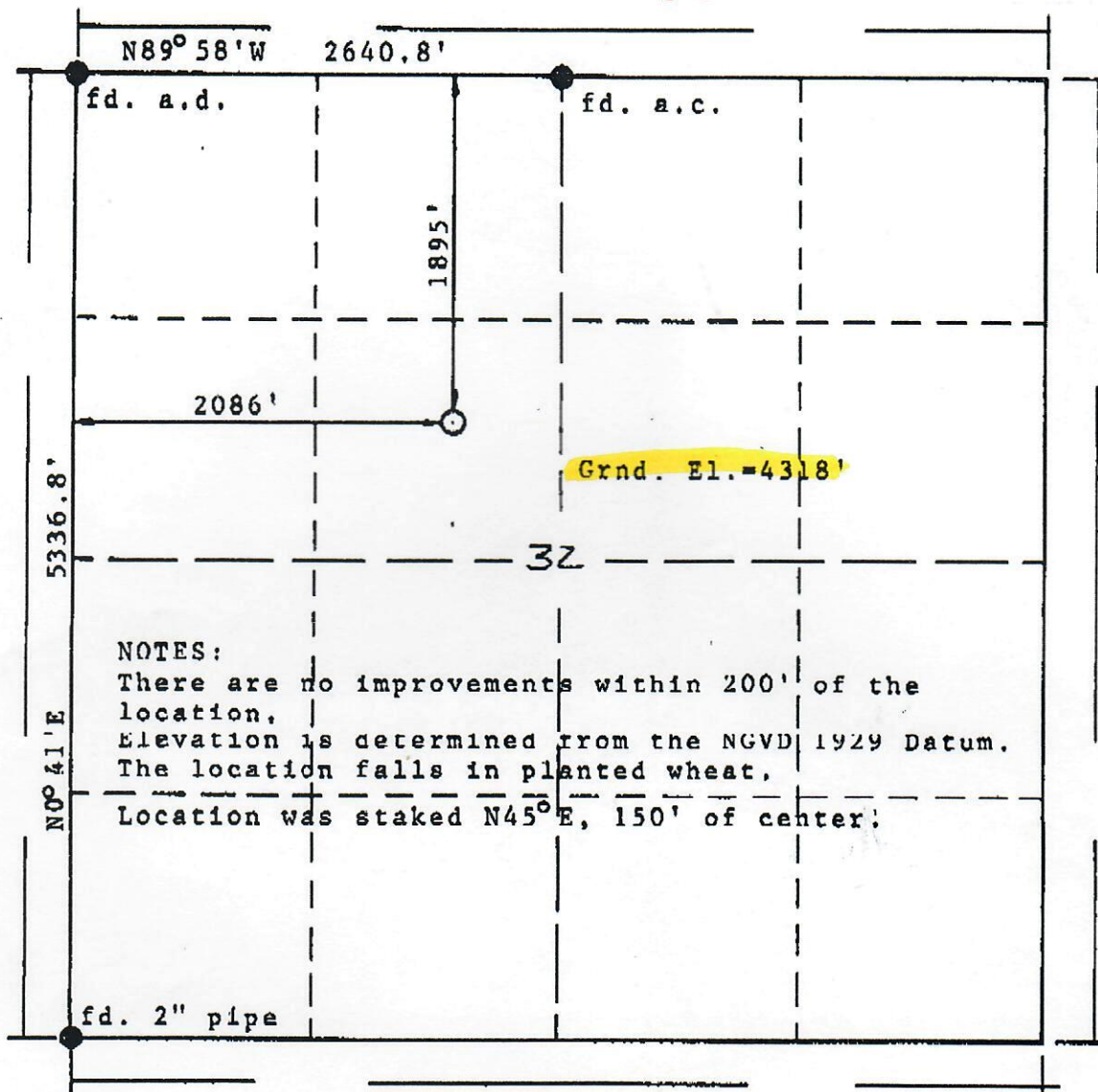
Form PS-102

R. 44 W.

SCANNED



BASIS OF BEARINGS: The north line of the NW $\frac{1}{4}$ of Section
32 assumed N89° 58' W.



T.
13
S.

Scale: 1"=1000'

Powers Elevation, Inc. of Denver, Colorado has in accordance with a request from Pat Ungleich for Mull Drilling Company, Inc.

determined the location of Klepper A #3

to be 1895' FNL & 2086' FWL

Section 32 , Township 13 South

Range 44 West of the Sixth Principal

Meridian,

Cheyenne County, Colorado

I hereby certify that this plan is an accurate representation of a correct survey showing the location of Klepper A #3



Date: November 26, 1993

Licensed Land Surveyor No. 19585
State of Colorado