

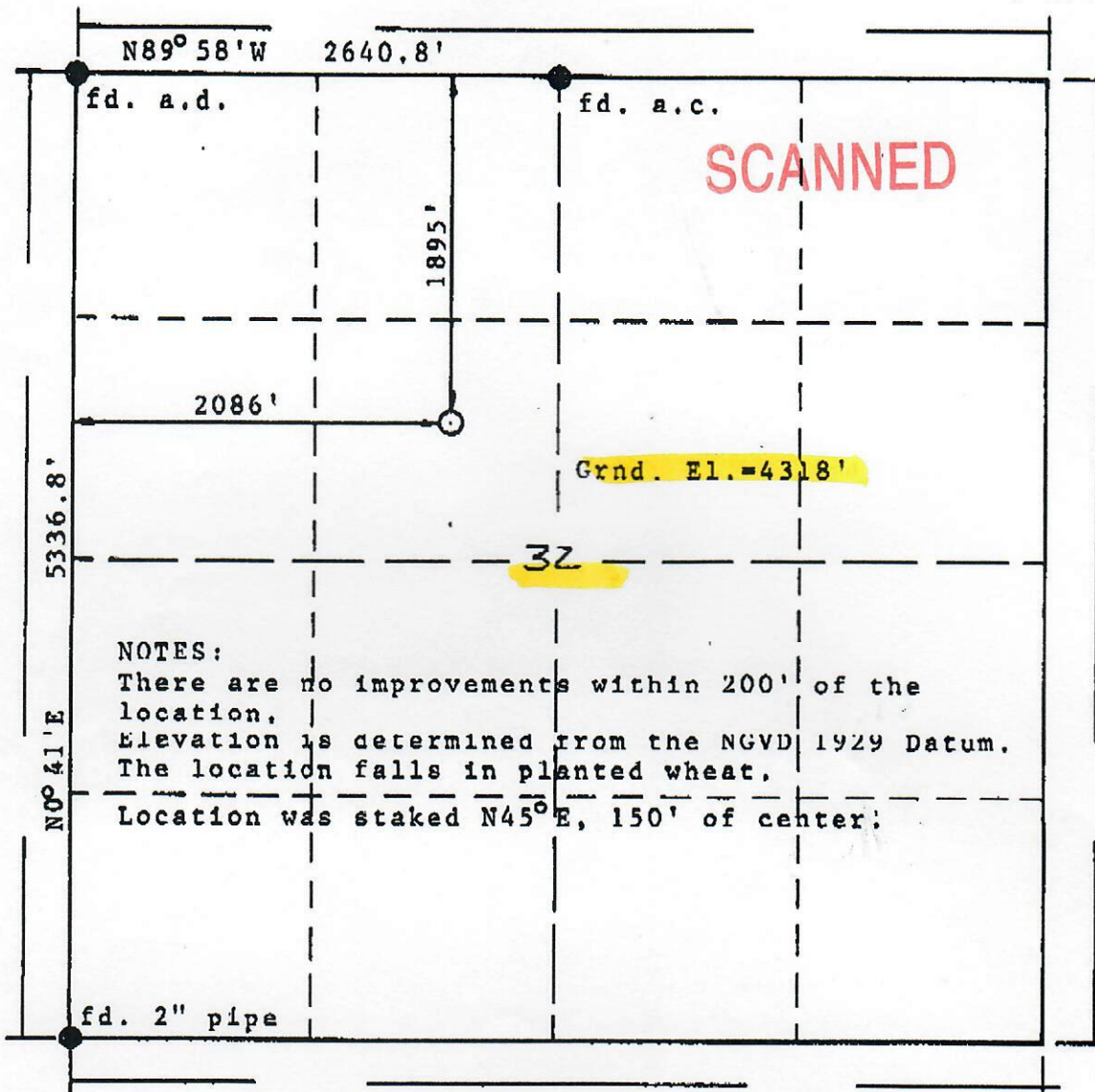


Form PS-102

R. 44 W.



**BASIS OF BEARINGS:** The north line of the NW $\frac{1}{4}$  of Section 32 assumed N89°58'W.



Scale: 1"=1000'

Powers Elevation, Inc. of Denver, Colorado has in accordance with a request from Pat Ungleich for Mull Drilling Company, Inc.

determined the location of Klepper A #3

to be 1895' FNL & 2086' FWL

Section 32 , Township 13 south

Range 44 West of the Sixth Principal

Meridian,

Cheyenne County, Colorado

I hereby certify that this plan is an accurate representation of a current survey showing the location of  
Klepper A #3

Date: November 26, 1993

Licensed Land Surveyor No. 19585  
State of Colorado

