



SCANNED

FORMATION

TEST

RECEIVED

JUL 01 1991

COLO. OIL & GAS CONS. COMM

REPORT

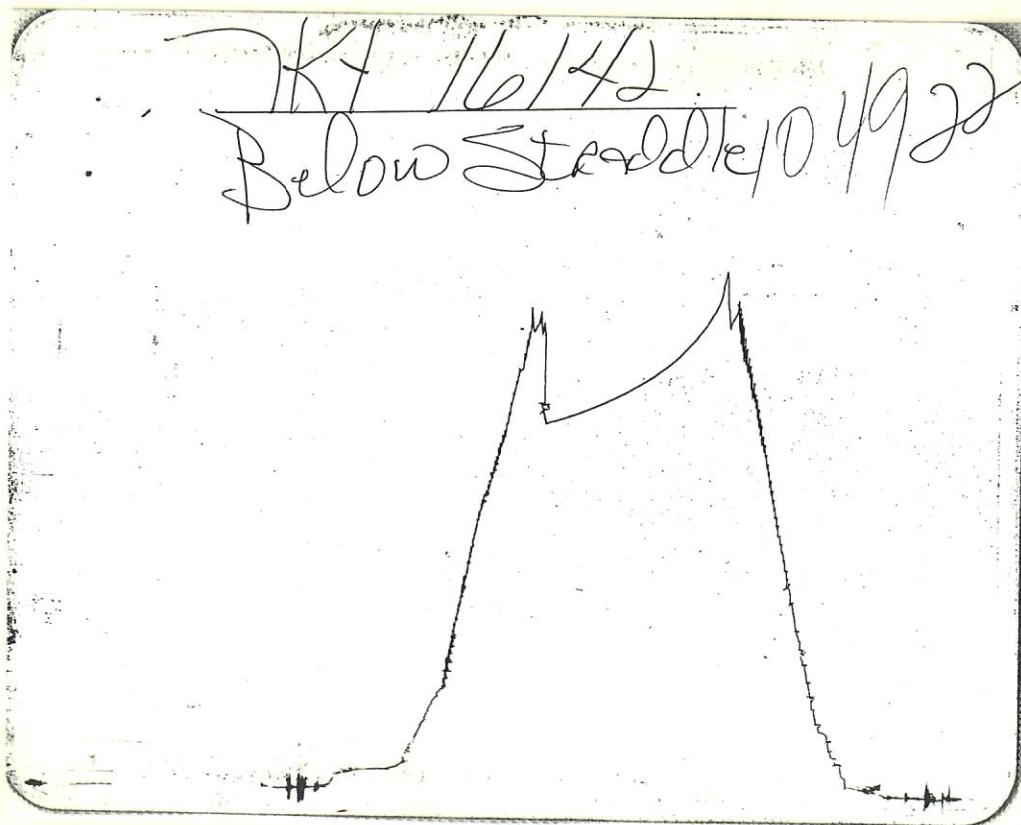


Home Office:

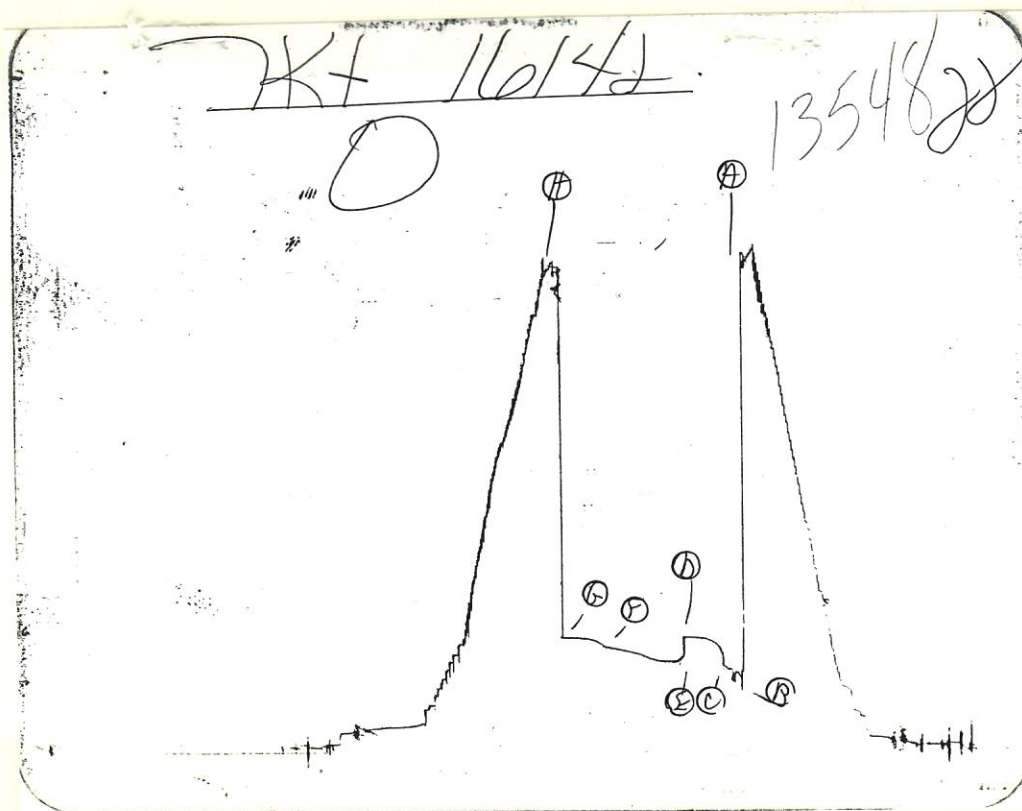
Wichita, Kansas 67201

P.O. Box 1599

Phone (316) 262-5861

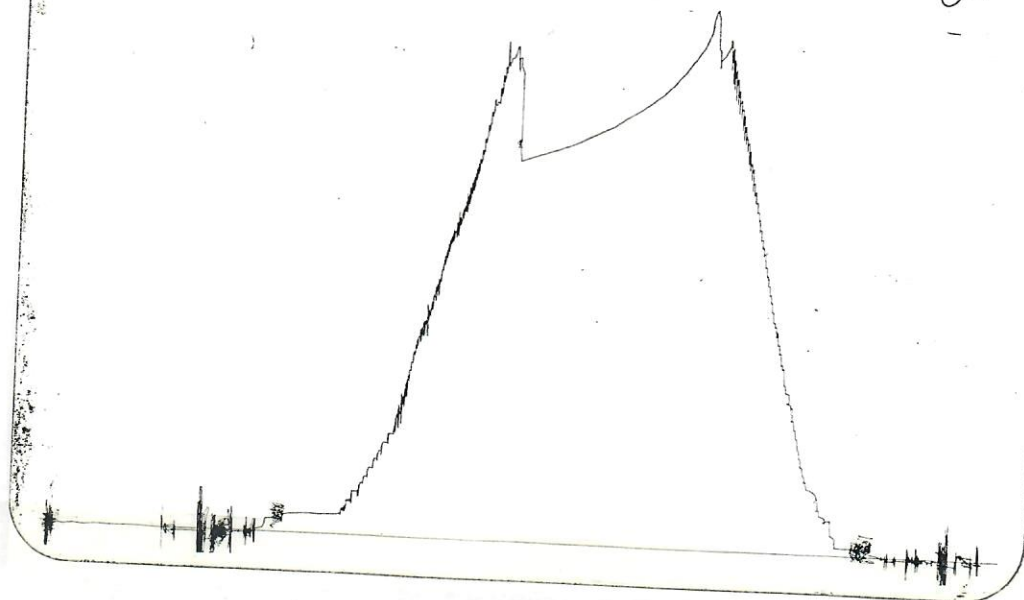


Inside Recorder

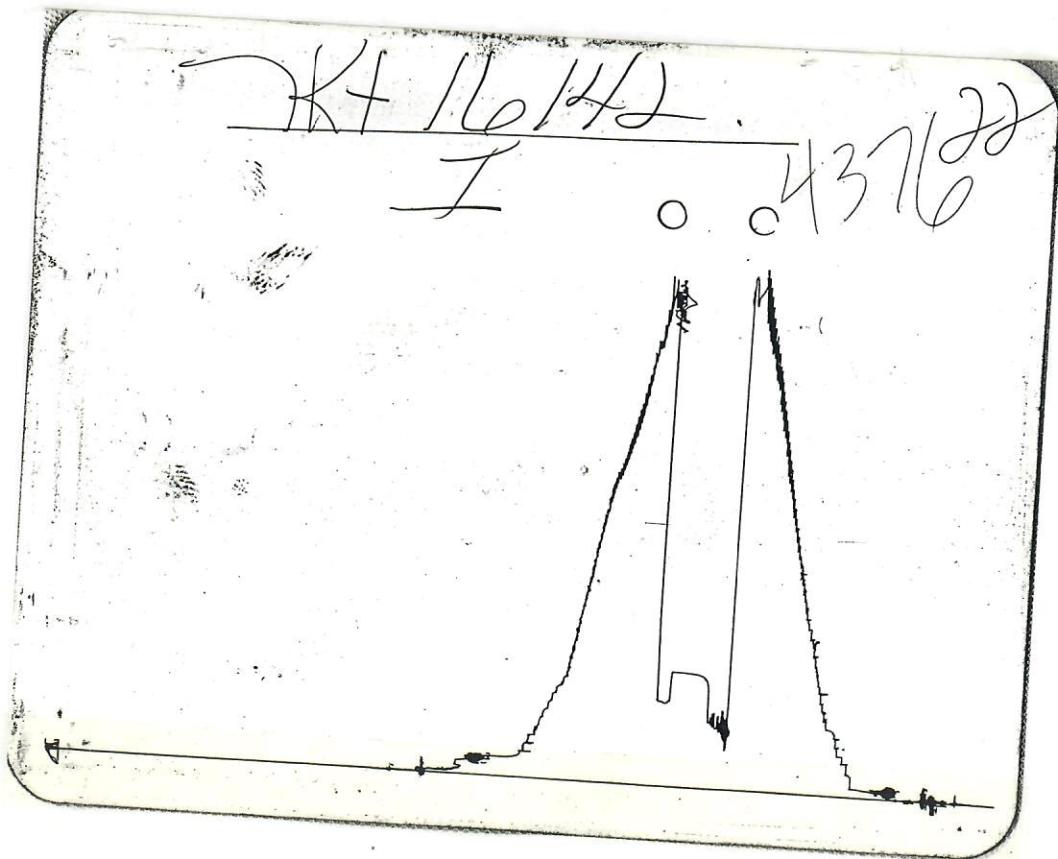


Outside Recorder

Below Steadle 13767
TKT 16/42



TKT 16/42
I 0 4376



FORMATION

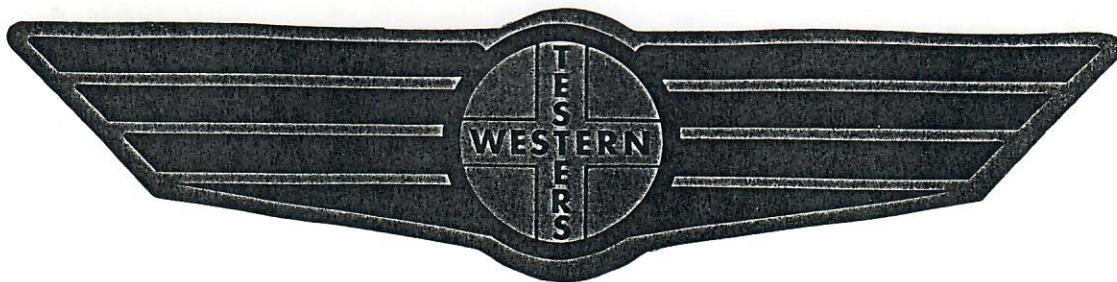
TEST

RECEIVED

JUL 01 1991

REPORT

COLO. OIL & GAS CONS. COMM



Home Office:

Wichita, Kansas 67201

P.O. Box 1599

Phone 1 - 800-688-7021

COMPANY UNION PACIFIC RESOURCES

LEASE & WELL NO. MT. PEARL UNIT

13G-30

SEC. 30 TWP. 13S RGE. 47W TEST NO. 2

DATE 6/21/91

WESTERN TESTING CO. INC.
SUBSURFACE PRESSURE SURVEY

DATE	:	6-21-91	TICKET	:	16142
CUSTOMER	:	UNION PACIFIC RESOURCES	LEASE	:	MT. PEARL UNIT
WELL	:	13G-30 TEST: 2	GEOLOGIST	:	COPE
ELEVATION	:	4344 GL	FORMATION	:	MORROW
SECTION	:	30	TOWNSHIP	:	13S
RANGE	:	47W	STATE	:	COLORADO
GAUGE SN#	:	13548	CLOCK	:	12
		COUNTY :	CHEYENNE		
		RANGE :	4075		

INTERVAL FROM	:	5220	TO	:	5402	TOTAL DEPTH	:	5540
DEPTH OF SELECTIVE ZONE	:							
PACKER DEPTH	:	5214	SIZE	:	6.75			
PACKER DEPTH	:	5220	SIZE	:	6.75			
PACKER DEPTH	:	5402	SIZE	:	6.75			
PACKER DEPTH	:		SIZE	:				

DRILLING CON.	:	MURFIN RIG 24			
MUD TYPE	:	CHEMICAL	VISCOSITY	:	52
WEIGHT	:	9.0	WATER LOSS (CC)	:	6.8
CHLORIDES (PPM)	:	250			
JARS-MAKE	:	W.T.C.	SERIAL NUMBER	:	406
DID WELL FLOW ?	:	NO	REVERSED OUT ?	:	NO

DRILL COLLAR LENGTH	:	266	FT	I.D. inch	:	2.20
WEIGHT PIPE LENGTH	:	0	FT	I.D. inch	:	0.00
DRILL PIPE LENGTH	:	4923	FT	I.D. inch	:	3.80
TEST TOOL LENGTH	:	31	FT	TOOL SIZE	:	5.50
ANCHOR LENGTH	:	182	FT	ANCHOR SIZE	:	5.50
SURFACE CHOKE SIZE	:	.75	IN	BOTTOM CHOKE SIZE	:	.75
MAIN HOLE SIZE	:	7.875	IN	TOOL JOINT SIZE	:	4.5XH

BLOW COMMENT #1	:	INITIAL FLOW PERIOD 1 INCH BLOW BUILDING TO
BLOW COMMENT #2	:	BOTTOM OF BUCKET IN 9 MINUTES - PLUGGING.
BLOW COMMENT #3	:	FINAL FLOW PERIOD 1/2 INCH BLOW BUILDING TO
BLOW COMMENT #4	:	BOTTOM OF BUCKET IN 9 MINUTES.

RECOVERED : 110 FT OF: MUD
 RECOVERED : 90 FT OF: Watery MUD
 RECOVERED : 150 FT OF: Watery MUD W/TRACE OF OIL-OIL< 2%
 RECOVERED : 180 FT OF: MUDDY WATER
 RECOVERED : 180 FT OF: WATER W/TRACE OF OIL - OIL < 2%
 RECOVERED : 90 FT OF: Gassy Water
 RECOVERED : 0 FT OF: Chlorides 62000 P.P.M.

Total Barrels Fluid = 8.74
 Total Fluid Prod Rate = 167.82 BFPD
 Indicated Oil Rate = 1.35 BOPD
 Indicated Wtr Rate = 82.12 BWPD
 Corrected Oil Rate = 133.23 BOPD
 Corrected Wtr Rate = 8099.14 BWPD

REMARK 1 : AFE # 09533
 REMARK 2 : READ OUTSIDE RECORDER
 REMARK 3 :
 REMARK 4 :

SET PACKER(S) :	2:45 P.M.	TIME STARTED OFF BOTTOM :	5:00 P.M.
WELL TEMPERATURE :	132		
INITIAL HYDROSTATIC PRESSURE		(A)	2654
INITIAL FLOW PERIOD MIN:	15	(B)	324 PSI TO (C) : 452
INITIAL CLOSED IN PERIOD MIN:	30	(D)	612
FINAL FLOW PERIOD MIN:	60	(E)	486 PSI TO (F) : 562
FINAL CLOSED IN PERIOD MIN:	30	(G)	611
FINAL HYDROSTATIC PRESSURE		(H)	2605

WESTERN TESTING CO. INC.
WICHITA-KANSAS

Pressure Transient Report

COMPANY : UNION PACIFIC RESOURCES
RIG : CHEYENNE-COLORADO
FIELD : MT. PEARL UNIT
WELL : 13G-30
DATE : 6-21-91
GAUGE NO : 13548

OPERATIONAL COMMENTS

AFF # 09533
READ OUTSIDE RECORDER

COMPANY : UNION PACIFIC RESOURCES
WELL : 13G-30
GAUGE # : 13548
DATE : 21/ 6/91

FIELD : MT. PEARL UNIT
JOB # : 16142
DEPTH : 5540
TEST : AFE # 09533

DATA No.	REAL TIME HR:MN:SS	ELAPSE TIME DELTA HOURS	PRESSURE PSIG	TEMP DEG F	DELTA P Pi-P(i-1)
INITIAL FLOW PERIOD					
2	2:45: 0	0.000	324.000	132.00	0.000
3	2:49:59	0.083	413.000	132.00	89.000
4	2:55: 0	0.167	439.000	132.00	26.000
5	3: 0: 0	0.250	452.000	132.00	13.000
INITIAL SHUT-IN PERIOD					
6	3: 3: 0	0.300	551.000	132.00	99.000
7	3: 6: 0	0.350	576.000	132.00	25.000
8	3: 9: 0	0.400	588.000	132.00	12.000
9	3:12: 0	0.450	597.000	132.00	9.000
10	3:15: 0	0.500	604.000	132.00	7.000
11	3:18: 0	0.550	606.000	132.00	2.000
12	3:21: 0	0.600	608.000	132.00	2.000
13	3:24: 0	0.650	610.000	132.00	2.000
14	3:27: 0	0.700	611.000	132.00	1.000
15	3:30: 0	0.750	612.000	132.00	1.000
FINAL FLOW PERIOD					
16	3:31: 0	0.767	486.000	132.00	-126.000
17	3:34:59	0.833	486.000	132.00	0.000
18	3:40: 0	0.917	486.000	132.00	0.000
19	3:45: 0	1.000	486.000	132.00	0.000
20	3:49:59	1.083	489.000	132.00	3.000
21	3:55: 0	1.167	498.000	132.00	9.000
22	4: 0: 0	1.250	513.000	132.00	15.000
23	4: 4:59	1.333	524.000	132.00	11.000
24	4:10: 0	1.417	534.000	132.00	10.000
25	4:15: 0	1.500	542.000	132.00	8.000
26	4:19:59	1.583	550.000	132.00	8.000
27	4:25: 0	1.667	558.000	132.00	8.000
28	4:30: 0	1.750	562.000	132.00	4.000
FINAL SHUT-IN PERIOD					
29	4:33: 0	1.800	578.000	132.00	16.000
30	4:36: 0	1.850	591.000	132.00	13.000
31	4:39: 0	1.900	597.000	132.00	6.000
32	4:42: 0	1.950	604.000	132.00	7.000
33	4:45: 0	2.000	608.000	132.00	4.000
34	4:48: 0	2.050	609.000	132.00	1.000
35	4:51: 0	2.100	610.000	132.00	1.000
36	4:54: 0	2.150	611.000	132.00	1.000
37	4:57: 0	2.200	611.000	132.00	0.000
38	5: 0: 0	2.250	611.000	132.00	0.000

WESTERN TESTING CO. INC.

FLUID SAMPLE REPORT

Date : 6-21-91 Ticket No. : 16142
Company : UNION PACIFIC RESOURCES
Well Name & No. : MT. PEARL UNIT 13G-30
DST No. 2
County : CHEYENNE State : COLORADO
Sampler No. : 1 Test Interval : 5220-5402

=====

Pressure in Sampler	260 PSIG	BHT	132	Deg F
Total Volume of Sampler	: 3150	cc		
Total Volume of Sample	: 3200	cc		
Oil:	200	cc		
Water:	2500	cc		
Mud:	500	cc		
Gas:	.065	cu ft		
Other:		cc		

=====

RESITIVITY

Drilling Mud .136 @ 72 F Chloride Content 62000 ppm
Mud Pit Sample .685 @ 76 F Chloride Content 250 ppm
Gas/Oil Ratio Gravity API @ Deg F
Where was sample drained RIG FLOOR

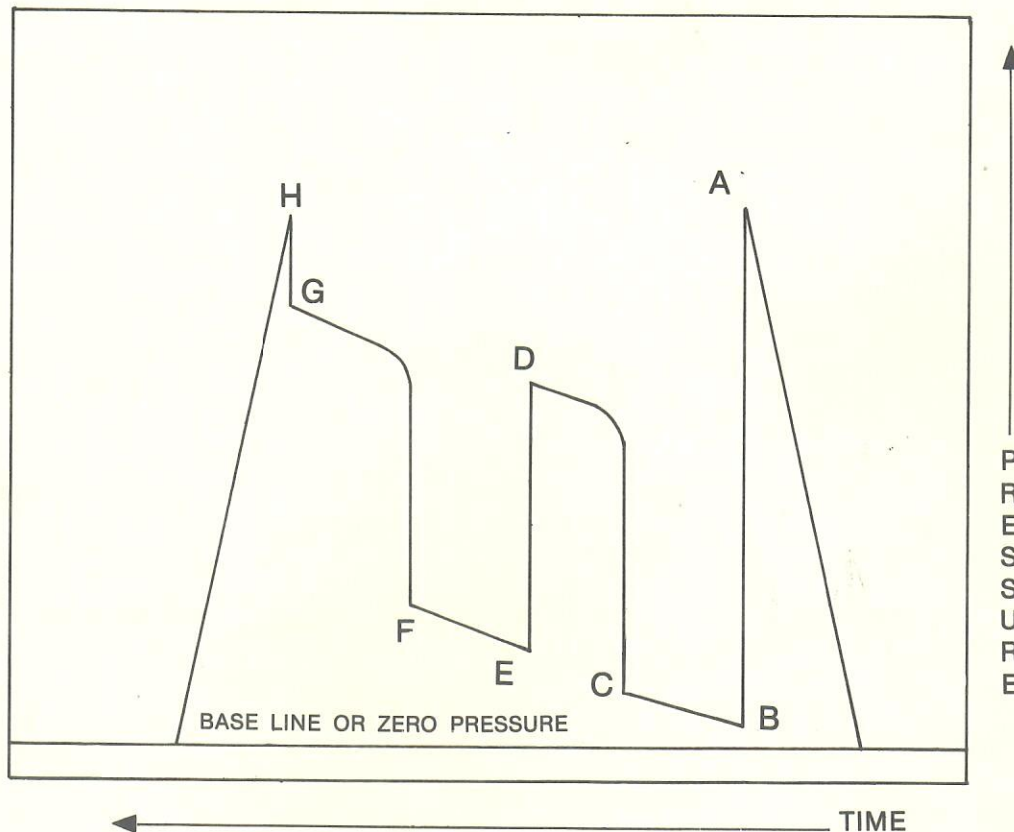
Remarks: AFE # 09533

GAS HAD STRONG SWEET ODOR

COMPANY TERMS

Western Testing Co., Inc. shall not be liable for damages of any kind to the property or personnel of the one for whom a test is made or for any loss suffered or sustained directly or indirectly through the use of its equipment, of its statements or opinion concerning the results of any test. Tools lost or damaged in the hole shall be paid at cost by the party for whom the test is made.

AK-1 Recorders



A - Initial Hydrostatic

B - First Initial Flow

C - First Final Flow

D - Initial Shut-In

E - Second Initial Flow

F - Second Final Flow

G - Final Shut-In

H - Final Hydrostatic