



02358409

# FORMATION

# TEST

# REPORT

**RECEIVED**

JUL 01 1991

COLO. OIL & GAS CONS. COMPA



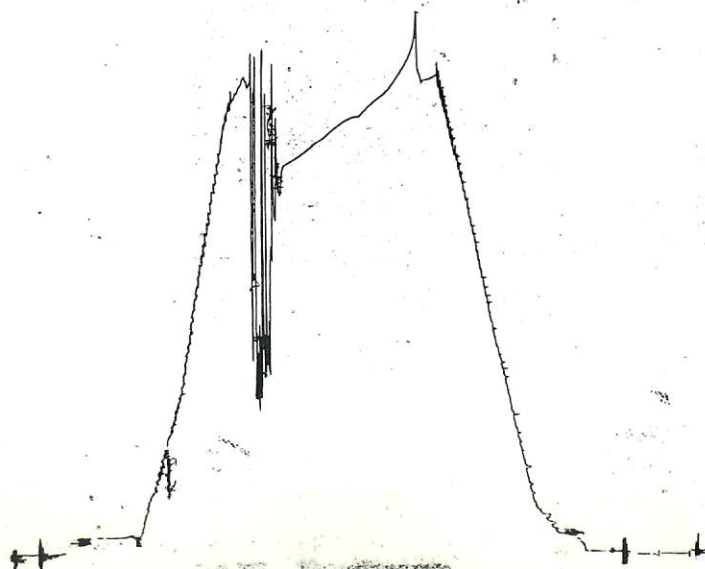
Home Office:

Wichita, Kansas 67201

P.O. Box 1599

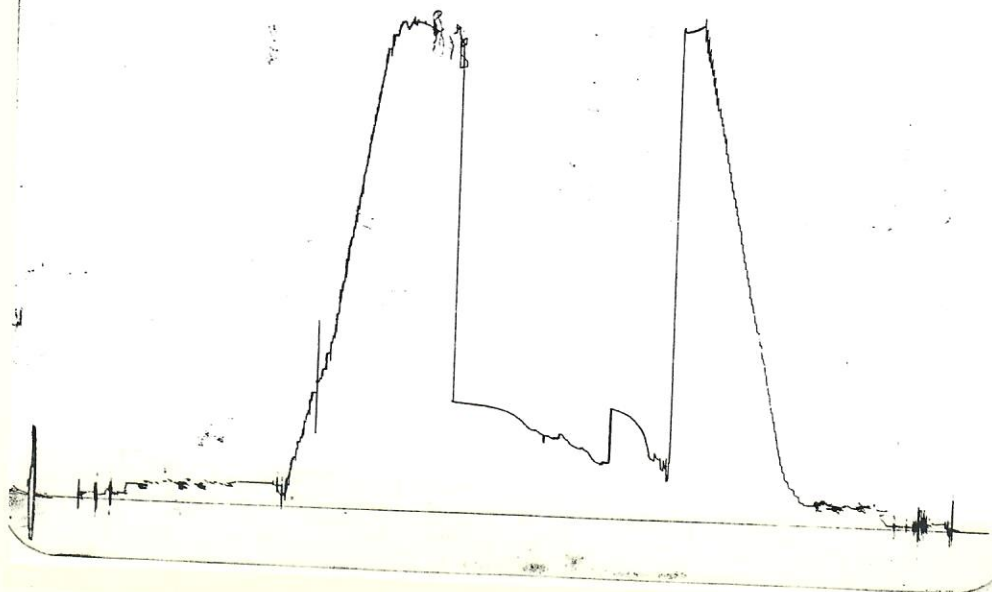
Phone (316) 262-5861

KT 16141  
Below Steadie #49 22

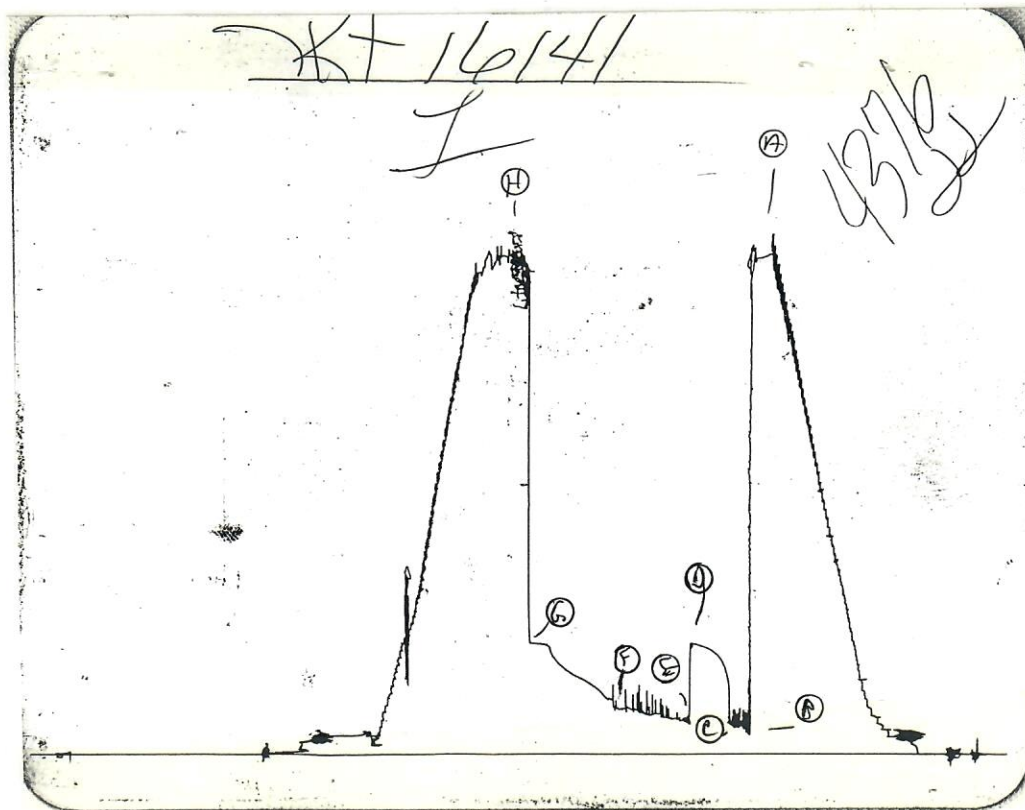
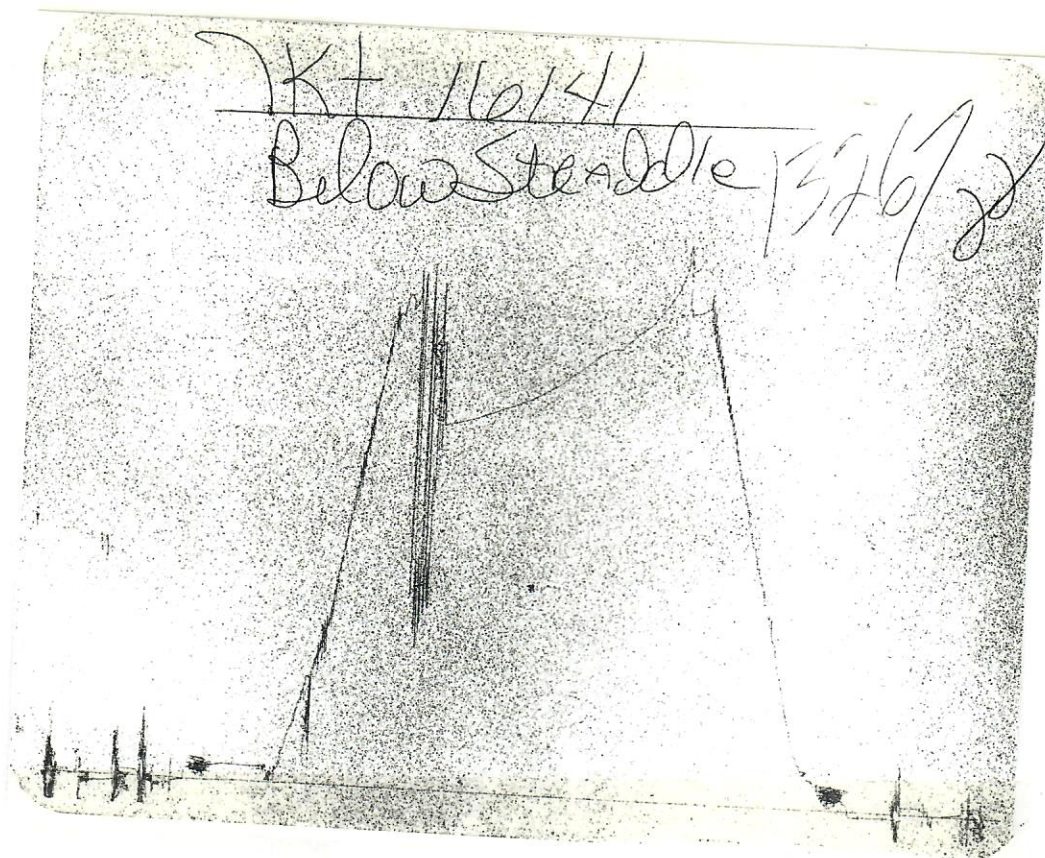


Inside Recorder

KT 16141  
① 1354822



Outside Recorder





# FORMATION TEST REPORT

RECEIVED  
JUL 01 1991  
COLO.OIL & GAS CONS.COMM

#13G-30



Home Office:

Wichita, Kansas 67201

P.O. Box 1599

Phone 1 - 800-688-7021

COMPANY UNION PACIFIC RESOURCES LEASE & WELL NO.        MOUNT PEARL UNIT SEC. 30 TWP. 13S RGE. 47W TEST NO. 1 DATE 6/20/91

WESTERN TESTING CO. INC.  
SUBSURFACE PRESSURE SURVEY

DATE	:	6-20-91	TICKET	:	16141
CUSTOMER	:	UNION PACIFIC RESOURCES	LEASE	:	MT. PEARL UNIT
WELL	:	13G-30 TEST: 1	GEOLOGIST	:	COPE
ELEVATION	:	4344	FORMATION	:	MORROW
SECTION	:	30	TOWNSHIP	:	13S
RANGE	:	47W	STATE	:	COLORADO
GAUGE SN#	:	4376	CLOCK	:	12
		COUNTY :	CHEYENNE		
		RANGE :	4000		

INTERVAL FROM	:	5220	TO	:	5392	TOTAL DEPTH	:	5540
DEPTH OF SELECTIVE ZONE	:							
PACKER DEPTH	:	5214	SIZE	:	6.75			
PACKER DEPTH	:	5220	SIZE	:	6.75			
PACKER DEPTH	:	5392	SIZE	:	6.75			
PACKER DEPTH	:		SIZE	:				

DRILLING CON.	:	MURFIN RIG 14			
MUD TYPE	:	CHEMICAL	VISCOSITY	:	52
WEIGHT	:	9.0	WATER LOSS (CC)	:	6.8
CHLORIDES (PPM)	:	85 MG/L			
JARS-MAKE	:	W.T.C.	SERIAL NUMBER	:	406
DID WELL FLOW ?	:	NO	REVERSED OUT ?	:	NO

DRILL COLLAR LENGTH	:	266	FT	I.D. inch	:	2.20
WEIGHT PIPE LENGTH	:	0	FT	I.D. inch	:	0.00
DRILL PIPE LENGTH	:	4923	FT	I.D. inch	:	3.80
TEST TOOL LENGTH	:	31	FT	TOOL SIZE	:	5.50
ANCHOR LENGTH	:	172	FT	ANCHOR SIZE	:	5.50
SURFACE CHOKE SIZE	:	.75	IN	BOTTOM CHOKE SIZE	:	.75
MAIN HOLE SIZE	:	7.875	IN	TOOL JOINT SIZE	:	4.5XH

BLOW COMMENT #1 : INITIAL FLOW PERIOD WEAK BLOW - 1 1/2 INCH  
BLOW COMMENT #2 : IN 15 MINUTES.  
BLOW COMMENT #3 : FINAL FLOW PERIOD OPENED WITH 1/4 INCH BLOW  
BLOW COMMENT #4 : DECREASED TO WEAK INTERMITTENT SURFACE BLOW.

RECOVERED : 185 FT OF: MUD - CHLORIDES 300 P.P.M.

Total Barrels Fluid = 0.87  
Total Fluid Prod Rate = 17.89 BFPD  
Indicated Wtr Rate = 1.79 BWPD

REMARK 1 : AFE # 09533  
REMARK 2 : LCM = 4 1/2 #/BBL - RW .685 @ 76 DEGREES F  
REMARK 3 : RUINED 2 SHALE PACKERS BUT RECOVERED ALL RUBBER  
REMARK 4 : PULLED OFF BOTTOM HARD - SEVERE PLUGGING

SET PACKER(S) :	3:45 A.M.	TIME STARTED OFF BOTTOM :	6:30 A.M.
WELL TEMPERATURE :	132		
INITIAL HYDROSTATIC PRESSURE		(A)	2625
INITIAL FLOW PERIOD MIN:	15	(B)	102 PSI TO (C) : 167
INITIAL CLOSED IN PERIOD MIN:	30	(D)	597
FINAL FLOW PERIOD MIN:	55	(E)	163 PSI TO (F) : 252
FINAL CLOSED IN PERIOD MIN:	63	(G)	599
FINAL HYDROSTATIC PRESSURE		(H)	2625

WESTERN TESTING CO. INC.  
WICHITA-KANSAS

Pressure Transient Report  
-----

COMPANY : UNION PACIFIC RESOURCES  
RIG : CHEYENNE-COLORADO  
FIELD : MOUNT PEARL UNIT  
WELL : 13G-30  
DATE : 6-20-91  
GAUGE NO : 4376

OPERATIONAL COMMENTS

AFE # 09533  
LCM = 4 1/2 #/BBL - RW .685 @ 76 DEGREES F  
RUINED 2 SHALE PACKERS BUT RECOVERED ALL RUBBER  
PULLED OFF BOTTOM HARD - SEVERE PLUGGING



COMPANY : UNION PACIFIC RESOURCES  
WELL : 13G-30  
GAUGE # : 4376  
DATE : 20/ 6/91

FIELD : MOUNT PEARL UNIT  
JOB # : 16141  
DEPTH : 5540  
TEST : AFE # 09533

DATA No.	REAL TIME HR:MN:SS	ELAPSE TIME DELTA HOURS	PRESSURE PSIG	TEMP DEG F	DELTA P Pi-P(i-1)
INITIAL FLOW PERIOD					
2	3:45: 0	0.000	102.000	132.00	0.000
3	3:49:59	0.083	224.000	132.00	122.000
4	3:55: 0	0.167	217.000	132.00	-7.000
5	4: 0: 0	0.250	167.000	132.00	-50.000
INITIAL SHUT-IN PERIOD					
6	4: 3: 0	0.300	418.000	132.00	251.000
7	4: 6: 0	0.350	483.000	132.00	65.000
8	4: 9: 0	0.400	522.000	132.00	39.000
9	4:12: 0	0.450	540.000	132.00	18.000
10	4:15: 0	0.500	554.000	132.00	14.000
11	4:18: 0	0.550	569.000	132.00	15.000
12	4:21: 0	0.600	576.000	132.00	7.000
13	4:24: 0	0.650	585.000	132.00	9.000
14	4:27: 0	0.700	589.000	132.00	4.000
15	4:30: 0	0.750	597.000	132.00	8.000
FINAL FLOW PERIOD					
16	4:31: 0	0.767	163.000	132.00	-434.000
17	4:34:59	0.833	196.000	132.00	33.000
18	4:40: 0	0.917	229.000	132.00	33.000
19	4:45: 0	1.000	199.000	132.00	-30.000
20	4:49:59	1.083	262.000	132.00	63.000
21	4:55: 0	1.167	224.000	132.00	-38.000
22	5: 0: 0	1.250	215.000	132.00	-9.000
23	5: 4:59	1.333	233.000	132.00	18.000
24	5:10: 0	1.417	243.000	132.00	10.000
25	5:15: 0	1.500	252.000	132.00	9.000
26	5:19:59	1.583	249.000	132.00	-3.000
27	5:25: 0	1.667	252.000	132.00	3.000
FINAL SHUT-IN PERIOD					
28	5:28: 0	1.717	296.000	132.00	44.000
29	5:31: 0	1.767	304.000	132.00	8.000
30	5:34: 0	1.817	317.000	132.00	13.000
31	5:37: 0	1.867	339.000	132.00	22.000
32	5:40: 0	1.917	359.000	132.00	20.000
33	5:43: 0	1.967	373.000	132.00	14.000
34	5:46: 0	2.017	386.000	132.00	13.000
35	5:49: 0	2.067	399.000	132.00	13.000
36	5:52: 0	2.117	412.000	132.00	13.000
37	5:55: 0	2.167	423.000	132.00	11.000
38	5:58: 0	2.217	434.000	132.00	11.000
39	6: 1: 0	2.267	448.000	132.00	14.000
40	6: 4: 0	2.317	464.000	132.00	16.000
41	6: 7: 0	2.367	481.000	132.00	17.000
42	6:10: 0	2.417	501.000	132.00	20.000
43	6:13: 0	2.467	532.000	132.00	31.000
44	6:16: 0	2.517	584.000	132.00	52.000
45	6:19: 0	2.567	593.000	132.00	9.000
46	6:22: 0	2.617	595.000	132.00	2.000
47	6:25: 0	2.667	597.000	132.00	2.000
48	6:28: 0	2.717	599.000	132.00	2.000

WESTERN TESTING CO. INC.



# FLUID SAMPLE REPORT

Date : 6-20-91 Ticket No. : 16141  
 Company : UNION PACIFIC RESOURCES  
 Well Name & No. : MT. PEARL UNIT 13G-30  
 DST No. 1  
 County : CHEYENNE State : COLORADO  
 Sampler No. : 1 Test Interval : 5220-5392

=====

Pressure in Sampler	98	PSIG	BHT	132	Deg F
Total Volume of Sampler	: 3150		cc		
Total Volume of Sample	: 3150		cc		
Oil:			cc		
Water:			cc		
Mud:	3150		cc		
Gas:			cu ft		
Other:			cc		

=====

## RESITIVITY

Drilling Mud	.685	@	76	F	Chloride Content	300 ppm
Mud Pit Sample	.685	@	76	F	Chloride Content	250 ppm
Gas/Oil Ratio			Gravity		API @	Deg F

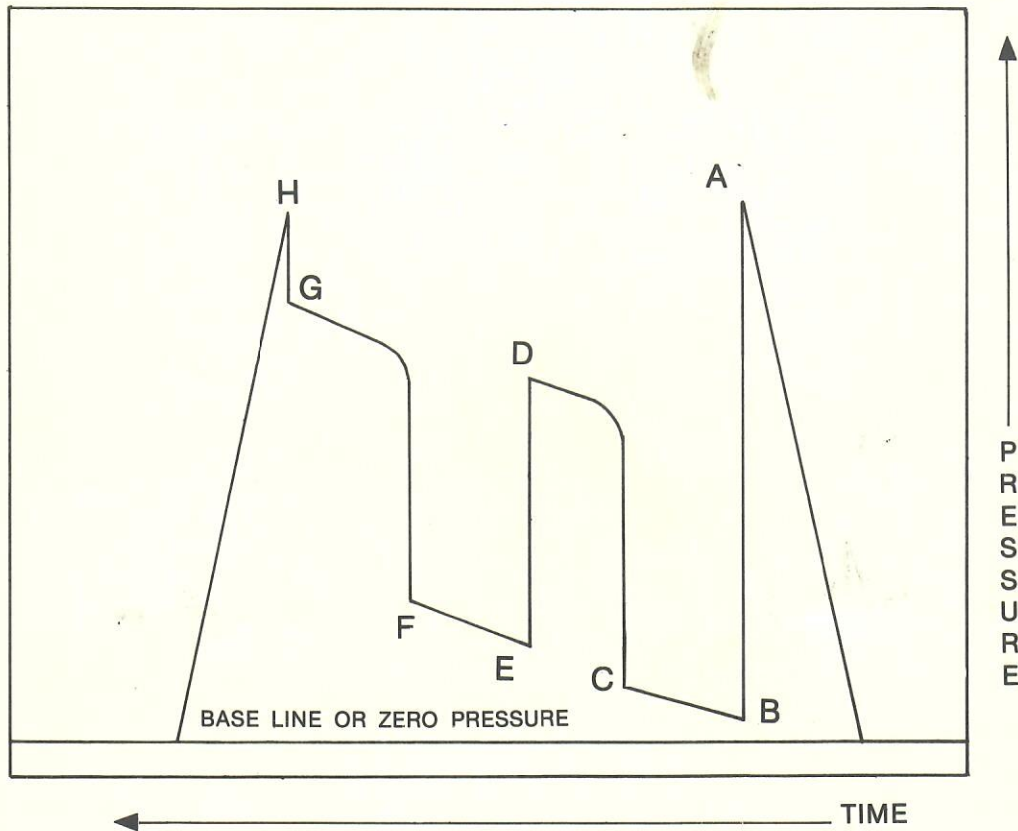
Where was sample drained RIG FLOOR

Remarks: AFE 09533

### COMPANY TERMS

Western Testing Co., Inc. shall not be liable for damages of any kind to the property or personnel of the one for whom a test is made or for any loss suffered or sustained directly or indirectly through the use of its equipment, of its statements or opinion concerning the results of any test. Tools lost or damaged in the hole shall be paid at cost by the party for whom the test is made.

### AK-1 Recorders



A - Initial Hydrostatic  
B - First Initial Flow  
C - First Final Flow  
D - Initial Shut-In

E - Second Initial Flow  
F - Second Final Flow  
G - Final Shut-In  
H - Final Hydrostatic