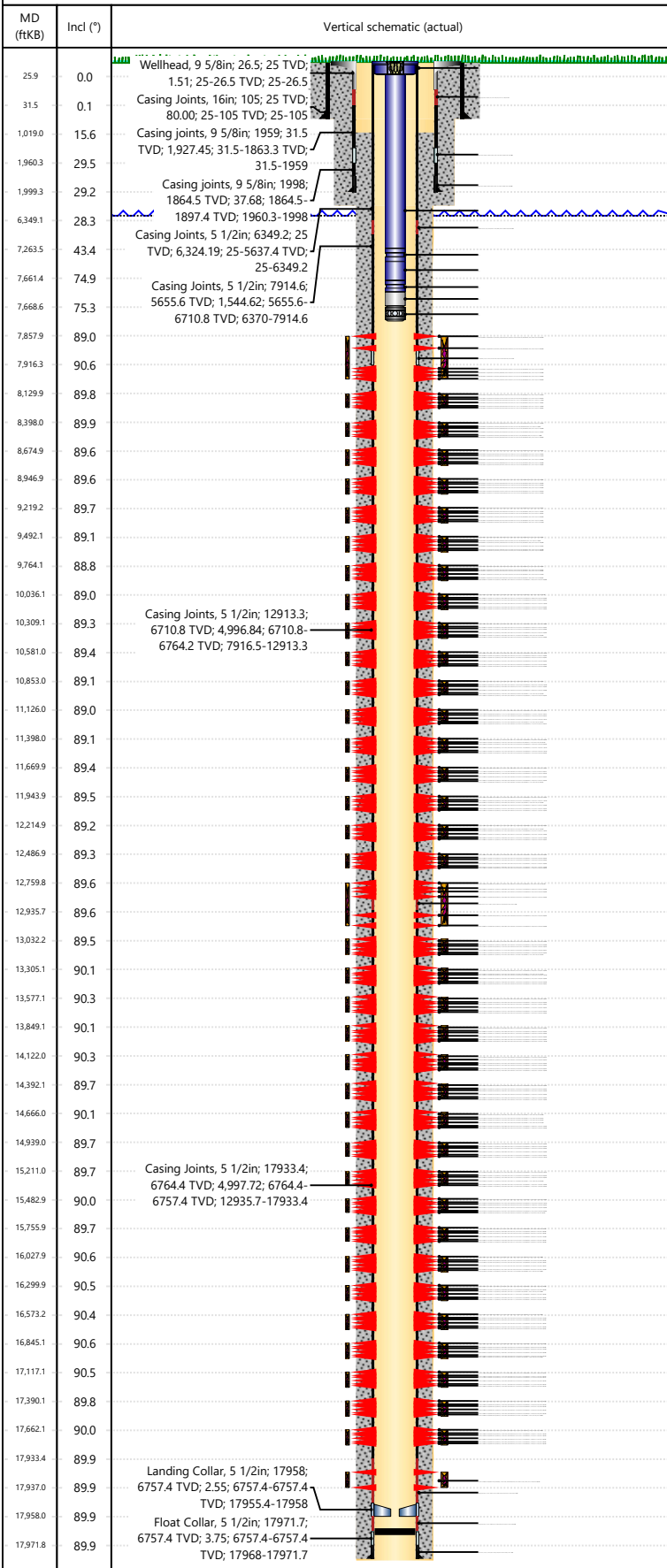




Wellbore Schematic Input Report

Well Name: George 08N

Original Hole [Land]



Well Header

Surface UWI 0512351775	Asset Team 10004133	Production Tree Location Land	
Original RKB Elevation (ft) 4,742.00	Original KB to Ground (ft) 25.00	Original Spud Date 3/26/2024	Abandon Date
Range 64W	Well Sub-Status PR	High Press... N	
Directions To Well WCR 42-53 East 6/10 North into. ALL traffic must arrive from and leave to the West via CR 53		Latitude (°) 40° 18' 0.346" N	Longitude (°) 104° 33' 16.744" W
Comment			

Congressional Location

Quarter 3 SW	Quarter 4 NE	Section 21	Township 4	Twntshp N/S Dir N	Range 64	Range E/W Dir W
-----------------	-----------------	---------------	---------------	----------------------	-------------	--------------------

Rig Operator

Rig/Unit Supervisor
Shawn Johnson

Daily Cost Summary

Sum of Field Est (Cost)
0

Wellbore Plug Back Total Depths

Date	PBTD (ftKB)	Method	Com
11/24/2024	17,968	Casing Tally	

Wellbore Sections

Section Des	Hole Size (in)	Top Depth (ftKB)	Btm Depth (ftKB)
Conductor	16	25.0	105.0
Surface	13 1/2	105.0	2,010.0
Production	8 1/2	2,010.0	17,984.0

Zone Statuses

Zone Name	Status Date	Status
Niobrara	11/19/2024	Open

Casing Strings

Conductor, Actual, 105ftKB

Casing Description	Run Date	OD (in)	Wt/Len (l...)	Grade	Top Depth...	Set Depth...
Conductor	2/6/2024	16	84.00	J-55	25	105

Surface, Actual, 1999.5ftKB

Casing Description	Run Date	OD (in)	Wt/Len (l...)	Grade	Top Depth...	Set Depth...
Surface	3/1/2024	9 5/8	36.00	J-55	25	1999.5

Production, Actual, 17975ftKB

Casing Description	Run Date	OD (in)	Wt/Len (l...)	Grade	Top Depth...	Set Depth...
Production	3/28/2024	5 1/2	20.00	P-110	25	17975

Cement

Des	Start Date	Top (ftKB)	Btm (ftKB)
Conductor Cement	2/6/2024	25.0	105.0
Surface	3/1/2024	25.0	1,999.5
Production Casing Cement	3/28/2024	1,019.0	17,975.0

Proposed Cement

Des	Top (ftKB)	Btm (ftKB)

Tubing Strings

Tubing Description	Run Date	String...	ID (in)	Wt (lb/ft)	Grade	Len (ft)	Set De...
Tubing - Production	11/8/2024	2 3/8	1.995	4.70	L-80	7,644.33	6,683.6

Tubing Components

Item Des	OD (in)	Wt (lb/ft)	Grade	Jts	Len (ft)	Btm (ftKB)	Btm (TVD) (ftKB)
Tubing Hanger	5.3			1	0.85	25.8	25.8
Tubing	2 3/8	4.70	L-80	219	7,237.55	7,263.4	6,487.4
X-Nipple	2 3/8			1	0.95	7,264.3	6,488.1
Tubing	2 3/8	4.70	L-80	12	397.20	7,661.5	6,681.6
XN - Nipple	2 3/8			1	1.03	7,662.6	6,681.9
Tubing Pup Joint	2 3/8	4.70	L-80	1	6.05	7,668.6	6,683.4
Ceramic disc sub	2 3/8			1	0.70	7,669.3	6,683.6

Other In Hole

Run Date	Des	Make	OD (in)	Top (ftKB)	Btm (ftKB)

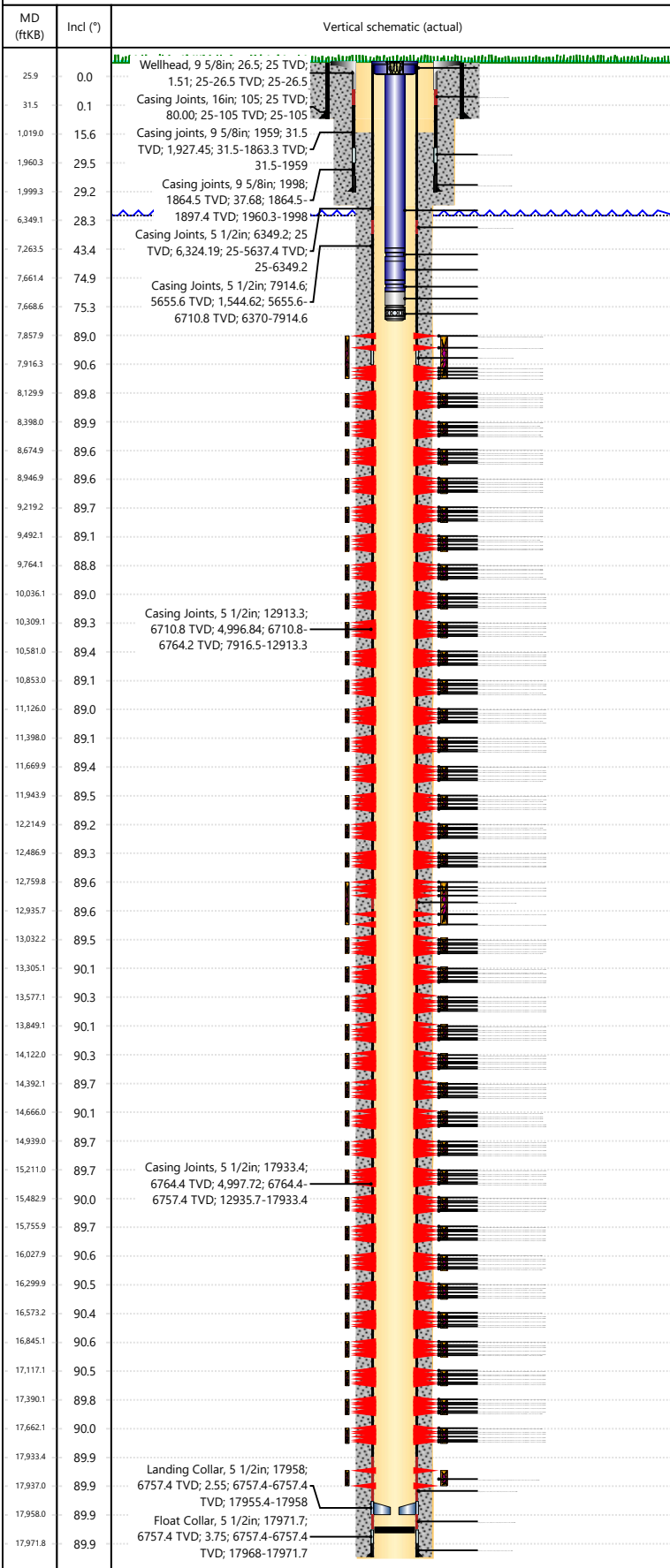


Wellbore Schematic Input Report

Well Name: George 08N

Original Hole [Land]

Proposed Other In Hole



Des	Make	OD (in)	Top (ftKB)	Btm (ftKB)
-----	------	---------	------------	------------

Logs

Date	Type	Depth Top (MD) (ftKB)	Btm (ftKB)
------	------	-----------------------	------------

Perforation Data

Linked Zone	Sum of Entered Shot Total	Top (ftKB)	Btm (ftKB)	Date
Niobrara, Original Hole	4	7858	7859	10/8/2024
Niobrara, Original Hole	4	7906	7907	10/8/2024
Niobrara, Original Hole	4	7954	7955	10/8/2024
Niobrara, Original Hole	4	8000	8001	10/8/2024
Niobrara, Original Hole	4	8054	8055	10/8/2024
Niobrara, Original Hole	4	8100	8101	10/8/2024
Niobrara, Original Hole	4	8130	8131	10/7/2024
Niobrara, Original Hole	4	8178	8179	10/7/2024
Niobrara, Original Hole	4	8221	8222	10/7/2024
Niobrara, Original Hole	4	8275	8276	10/7/2024
Niobrara, Original Hole	4	8323	8324	10/7/2024
Niobrara, Original Hole	4	8372	8373	10/7/2024
Niobrara, Original Hole	4	8398	8399	10/7/2024
Niobrara, Original Hole	4	8452	8453	10/7/2024
Niobrara, Original Hole	4	8498	8499	10/7/2024
Niobrara, Original Hole	4	8547	8548	10/7/2024
Niobrara, Original Hole	4	8595	8596	10/7/2024
Niobrara, Original Hole	4	8644	8645	10/7/2024
Niobrara, Original Hole	4	8675	8676	10/7/2024
Niobrara, Original Hole	4	8723	8724	10/7/2024
Niobrara, Original Hole	4	8771	8772	10/7/2024
Niobrara, Original Hole	4	8820	8821	10/7/2024
Niobrara, Original Hole	4	8868	8869	10/7/2024
Niobrara, Original Hole	4	8916	8917	10/7/2024
Niobrara, Original Hole	4	8947	8948	10/7/2024
Niobrara, Original Hole	4	8995	8996	10/7/2024
Niobrara, Original Hole	4	9043	9044	10/7/2024
Niobrara, Original Hole	4	9092	9093	10/7/2024
Niobrara, Original Hole	4	9140	9141	10/7/2024
Niobrara, Original Hole	4	9189	9190	10/7/2024
Niobrara, Original Hole	4	9219	9220	10/7/2024
Niobrara, Original Hole	4	9267	9268	10/7/2024
Niobrara, Original Hole	4	9315	9316	10/7/2024
Niobrara, Original Hole	4	9364	9365	10/7/2024
Niobrara, Original Hole	4	9412	9413	10/7/2024
Niobrara, Original Hole	4	9461	9462	10/7/2024
Niobrara, Original Hole	4	9492	9493	10/7/2024
Niobrara, Original Hole	4	9540	9541	10/7/2024
Niobrara, Original Hole	4	9588	9589	10/7/2024
Niobrara, Original Hole	4	9635	9636	10/7/2024
Niobrara, Original Hole	4	9680	9681	10/7/2024
Niobrara, Original Hole	4	9734	9735	10/7/2024
Niobrara, Original Hole	4	9764	9765	10/6/2024
Niobrara, Original Hole	4	9812	9813	10/6/2024
Niobrara, Original Hole	4	9855	9856	10/6/2024
Niobrara, Original Hole	4	9911	9912	10/6/2024
Niobrara, Original Hole	4	9957	9958	10/6/2024
Niobrara, Original Hole	4	10006	10007	10/6/2024
Niobrara, Original Hole	4	10036	10037	10/6/2024
Niobrara, Original Hole	4	10087	10088	10/6/2024
Niobrara, Original Hole	4	10132	10133	10/6/2024
Niobrara, Original Hole	4	10181	10182	10/6/2024
Niobrara, Original Hole	4	10229	10230	10/6/2024
Niobrara, Original Hole	4	10278	10279	10/6/2024



Wellbore Schematic Input Report

Well Name: George 08N

Original Hole [Land]			Perforation Data				
MD (ftKB)	Incl (°)	Vertical schematic (actual)	Linked Zone	Sum of Entered Shot Total	Top (ftKB)	Btm (ftKB)	Date
25.9	0.0	Wellhead, 9 5/8in; 26.5; 25 TVD; 1.51; 25-26.5 TVD; 25-26.5	Niobrara, Original Hole	4	10309	10310	10/6/2024
31.5	0.1	Casing Joints, 16in; 105; 25 TVD; 80.00; 25-105 TVD; 25-105	Niobrara, Original Hole	4	10357	10358	10/6/2024
1019.0	15.6	Casing joints, 9 5/8in; 1959; 31.5 TVD; 1,927.45; 31.5-1863.3 TVD; 31.5-1959	Niobrara, Original Hole	4	10405	10406	10/6/2024
1960.3	29.5		Niobrara, Original Hole	4	10454	10455	10/6/2024
1999.3	29.2	Casing joints, 9 5/8in; 1998; 1864.5 TVD; 37.68; 1864.5-1897.4 TVD; 1960.3-1998	Niobrara, Original Hole	4	10502	10503	10/6/2024
6349.1	28.3		Niobrara, Original Hole	4	10549	10550	10/6/2024
7263.5	43.4	Casing Joints, 5 1/2in; 6349.2; 25 TVD; 6,324.19; 25-5637.4 TVD; 25-6349.2	Niobrara, Original Hole	4	10581	10582	10/6/2024
7661.4	74.9		Niobrara, Original Hole	4	10629	10630	10/6/2024
7668.6	75.3	Casing Joints, 5 1/2in; 7914.6; 5655.6 TVD; 1,544.62; 5655.6-6710.8 TVD; 6370-7914.6	Niobrara, Original Hole	4	10677	10678	10/6/2024
7857.9	89.0		Niobrara, Original Hole	4	10726	10727	10/6/2024
7916.3	90.6		Niobrara, Original Hole	4	10774	10775	10/6/2024
8129.9	89.8		Niobrara, Original Hole	4	10823	10824	10/6/2024
8398.0	89.9		Niobrara, Original Hole	4	10853	10854	10/6/2024
8674.9	89.6		Niobrara, Original Hole	4	10901	10902	10/6/2024
8946.9	89.6		Niobrara, Original Hole	4	10949	10950	10/6/2024
9219.2	89.7		Niobrara, Original Hole	4	10998	10999	10/6/2024
9492.1	89.1		Niobrara, Original Hole	4	11046	11047	10/6/2024
9764.1	88.8		Niobrara, Original Hole	4	11093	11094	10/6/2024
10036.1	89.0		Niobrara, Original Hole	4	11126	11127	10/6/2024
10309.1	89.3	Casing Joints, 5 1/2in; 12913.3; 6710.8 TVD; 4,996.84; 6710.8-6764.2 TVD; 7916.5-12913.3	Niobrara, Original Hole	4	11174	11175	10/6/2024
10581.0	89.4		Niobrara, Original Hole	4	11222	11223	10/6/2024
10853.0	89.1		Niobrara, Original Hole	4	11271	11272	10/6/2024
11126.0	89.0		Niobrara, Original Hole	4	11315	11316	10/6/2024
11398.0	89.1		Niobrara, Original Hole	4	11372	11373	10/6/2024
11669.9	89.4		Niobrara, Original Hole	4	11398	11399	10/5/2024
11943.9	89.5		Niobrara, Original Hole	4	11446	11447	10/5/2024
12214.9	89.2		Niobrara, Original Hole	4	11494	11495	10/5/2024
12486.9	89.3		Niobrara, Original Hole	4	11541	11542	10/5/2024
12759.8	89.6		Niobrara, Original Hole	4	11591	11592	10/5/2024
12935.7	89.6		Niobrara, Original Hole	4	11640	11641	10/5/2024
13032.2	89.5		Niobrara, Original Hole	4	11670	11671	10/5/2024
13305.1	90.1		Niobrara, Original Hole	4	11717	11718	10/5/2024
13577.1	90.3		Niobrara, Original Hole	4	11768	11769	10/5/2024
13849.1	90.1		Niobrara, Original Hole	4	11815	11816	10/5/2024
14122.0	90.3		Niobrara, Original Hole	4	11863	11864	10/5/2024
14392.1	89.7		Niobrara, Original Hole	4	11912	11913	10/5/2024
14666.0	90.1		Niobrara, Original Hole	4	11944	11945	10/5/2024
14939.0	89.7		Niobrara, Original Hole	4	11991	11992	10/5/2024
15211.0	89.7	Casing Joints, 5 1/2in; 17933.4; 6764.4 TVD; 4,997.72; 6764.4-6757.4 TVD; 12935.7-17933.4	Niobrara, Original Hole	4	12039	12040	10/5/2024
15482.9	90.0		Niobrara, Original Hole	4	12088	12089	10/5/2024
15755.9	89.7		Niobrara, Original Hole	4	12136	12137	10/5/2024
16027.9	90.6		Niobrara, Original Hole	4	12185	12186	10/5/2024
16299.9	90.5		Niobrara, Original Hole	4	12215	12216	10/4/2024
16573.2	90.4		Niobrara, Original Hole	4	12263	12264	10/4/2024
16845.1	90.6		Niobrara, Original Hole	4	12311	12312	10/4/2024
17117.1	90.5		Niobrara, Original Hole	4	12360	12361	10/4/2024
17390.1	89.8		Niobrara, Original Hole	4	12408	12409	10/4/2024
17662.1	90.0		Niobrara, Original Hole	4	12457	12458	10/4/2024
17933.4	89.9		Niobrara, Original Hole	4	12487	12488	10/4/2024
17937.0	89.9	Landing Collar, 5 1/2in; 17958; 6757.4 TVD; 2.55; 6757.4-6757.4 TVD; 17955.4-17958	Niobrara, Original Hole	4	12535	12536	10/4/2024
17958.0	89.9		Niobrara, Original Hole	4	12583	12584	10/4/2024
17971.8	89.9	Float Collar, 5 1/2in; 17971.7; 6757.4 TVD; 3.75; 6757.4-6757.4 TVD; 17968-17971.7	Niobrara, Original Hole	4	12632	12633	10/4/2024
			Niobrara, Original Hole	4	12680	12681	10/4/2024
			Niobrara, Original Hole	4	12729	12730	10/4/2024
			Niobrara, Original Hole	4	12760	12761	10/4/2024
			Niobrara, Original Hole	4	12808	12809	10/4/2024
			Niobrara, Original Hole	4	12856	12857	10/4/2024
			Niobrara, Original Hole	4	12905	12906	10/4/2024
			Niobrara, Original Hole	4	12953	12954	10/4/2024
			Niobrara, Original Hole	4	13002	13003	10/4/2024



Wellbore Schematic Input Report

Well Name: George 08N

Original Hole [Land]			Perforation Data				
MD (ftKB)	Incl (°)	Vertical schematic (actual)	Linked Zone	Sum of Entered Shot Total	Top (ftKB)	Btm (ftKB)	Date
25.9	0.0	Wellhead, 9 5/8in; 26.5; 25 TVD; 1.51; 25-26.5 TVD; 25-26.5	Niobrara, Original Hole	4	13032	13033	10/4/2024
31.5	0.1	Casing Joints, 16in; 105; 25 TVD; 80.00; 25-105 TVD; 25-105	Niobrara, Original Hole	4	13080	13081	10/4/2024
1019.0	15.6	Casing joints, 9 5/8in; 1959; 31.5 TVD; 1,927.45; 31.5-1863.3 TVD; 31.5-1959	Niobrara, Original Hole	4	13128	13129	10/4/2024
1960.3	29.5		Niobrara, Original Hole	4	13177	13178	10/4/2024
1999.3	29.2	Casing joints, 9 5/8in; 1998; 1864.5 TVD; 37.68; 1864.5-1897.4 TVD; 1960.3-1998	Niobrara, Original Hole	4	13225	13226	10/4/2024
6349.1	28.3	Casing Joints, 5 1/2in; 6349.2; 25 TVD; 6,324.19; 25-5637.4 TVD; 25-6349.2	Niobrara, Original Hole	4	13274	13275	10/4/2024
7263.5	43.4		Niobrara, Original Hole	4	13305	13306	10/4/2024
7661.4	74.9	Casing Joints, 5 1/2in; 7914.6; 5655.6 TVD; 1,544.62; 5655.6-6710.8 TVD; 6370-7914.6	Niobrara, Original Hole	4	13353	13354	10/4/2024
7668.6	75.3		Niobrara, Original Hole	4	13353	13354	10/4/2024
7857.9	89.0		Niobrara, Original Hole	4	13401	13402	10/4/2024
7916.3	90.6		Niobrara, Original Hole	4	13450	13451	10/4/2024
8129.9	89.8		Niobrara, Original Hole	4	13498	13499	10/4/2024
8398.0	89.9		Niobrara, Original Hole	4	13547	13548	10/4/2024
8674.9	89.6		Niobrara, Original Hole	4	13577	13578	10/3/2024
8946.9	89.6		Niobrara, Original Hole	4	13625	13626	10/3/2024
9219.2	89.7		Niobrara, Original Hole	4	13673	13674	10/3/2024
9492.1	89.1		Niobrara, Original Hole	4	13722	13723	10/3/2024
9764.1	88.8		Niobrara, Original Hole	4	13770	13771	10/3/2024
10036.1	89.0		Niobrara, Original Hole	4	13818	13819	10/3/2024
10309.1	89.3	Casing Joints, 5 1/2in; 12913.3; 6710.8 TVD; 4,996.84; 6710.8-6764.2 TVD; 7916.5-12913.3	Niobrara, Original Hole	4	13849	13850	10/3/2024
10581.0	89.4		Niobrara, Original Hole	4	13897	13898	10/3/2024
10853.0	89.1		Niobrara, Original Hole	4	13945	13946	10/3/2024
11126.0	89.0		Niobrara, Original Hole	4	13994	13995	10/3/2024
11398.0	89.1		Niobrara, Original Hole	4	14047	14048	10/3/2024
11669.9	89.4		Niobrara, Original Hole	4	14091	14092	10/3/2024
11943.9	89.5		Niobrara, Original Hole	4	14122	14123	10/3/2024
12214.9	89.2		Niobrara, Original Hole	4	14170	14171	10/3/2024
12486.9	89.3		Niobrara, Original Hole	4	14222	14223	10/3/2024
12759.8	89.6		Niobrara, Original Hole	4	14267	14268	10/3/2024
12935.7	89.6		Niobrara, Original Hole	4	14315	14316	10/3/2024
13032.2	89.5		Niobrara, Original Hole	4	14364	14365	10/3/2024
13305.1	90.1		Niobrara, Original Hole	4	14392	14393	10/3/2024
13577.1	90.3		Niobrara, Original Hole	4	14443	14444	10/3/2024
13849.1	90.1		Niobrara, Original Hole	4	14490	14491	10/3/2024
14122.0	90.3		Niobrara, Original Hole	4	14539	14540	10/3/2024
14392.1	89.7		Niobrara, Original Hole	4	14587	14588	10/3/2024
14666.0	90.1		Niobrara, Original Hole	4	14636	14637	10/3/2024
14939.0	89.7		Niobrara, Original Hole	4	14666	14667	10/2/2024
15211.0	89.7	Casing Joints, 5 1/2in; 17933.4; 6764.4 TVD; 4,997.72; 6764.4-6757.4 TVD; 12935.7-17933.4	Niobrara, Original Hole	4	14714	14715	10/2/2024
15482.9	90.0		Niobrara, Original Hole	4	14762	14763	10/2/2024
15755.9	89.7		Niobrara, Original Hole	4	14811	14812	10/2/2024
16027.9	90.6		Niobrara, Original Hole	4	14859	14860	10/2/2024
16299.9	90.5		Niobrara, Original Hole	4	14908	14909	10/2/2024
16573.2	90.4		Niobrara, Original Hole	4	14939	14940	10/2/2024
16845.1	90.6		Niobrara, Original Hole	4	14987	14988	10/2/2024
17117.1	90.5		Niobrara, Original Hole	4	15035	15036	10/2/2024
17390.1	89.8		Niobrara, Original Hole	4	15084	15085	10/2/2024
17662.1	90.0		Niobrara, Original Hole	4	15132	15133	10/2/2024
17933.4	89.9		Niobrara, Original Hole	4	15181	15182	10/2/2024
17937.0	89.9	Landing Collar, 5 1/2in; 17958; 6757.4 TVD; 2.55; 6757.4-6757.4 TVD; 17955.4-17958	Niobrara, Original Hole	4	15211	15212	10/2/2024
17958.0	89.9		Niobrara, Original Hole	4	15259	15260	10/2/2024
17971.8	89.9	Float Collar, 5 1/2in; 17971.7; 6757.4 TVD; 3.75; 6757.4-6757.4 TVD; 17968-17971.7	Niobrara, Original Hole	4	15307	15308	10/2/2024
			Niobrara, Original Hole	4	15356	15357	10/2/2024
			Niobrara, Original Hole	4	15404	15405	10/2/2024
			Niobrara, Original Hole	4	15453	15454	10/2/2024
			Niobrara, Original Hole	4	15483	15484	10/2/2024
			Niobrara, Original Hole	4	15531	15532	10/2/2024
			Niobrara, Original Hole	4	15579	15580	10/2/2024
			Niobrara, Original Hole	4	15628	15629	10/2/2024
			Niobrara, Original Hole	4	15676	15677	10/2/2024
			Niobrara, Original Hole	4	15725	15726	10/2/2024



Wellbore Schematic Input Report

Well Name: George 08N

Original Hole [Land]			Perforation Data				
MD (ftKB)	Incl (°)	Vertical schematic (actual)	Linked Zone	Sum of Entered Shot Total	Top (ftKB)	Btm (ftKB)	Date
25.9	0.0	Wellhead, 9 5/8in; 26.5; 25 TVD; 1.51; 25-26.5 TVD; 25-26.5	Niobrara, Original Hole	4	15756	15757	10/1/2024
31.5	0.1	Casing Joints, 16in; 105; 25 TVD; 80.00; 25-105 TVD; 25-105	Niobrara, Original Hole	4	15804	15805	10/1/2024
1019.0	15.6	Casing joints, 9 5/8in; 1959; 31.5 TVD; 1,927.45; 31.5-1863.3 TVD; 31.5-1959	Niobrara, Original Hole	4	15852	15853	10/1/2024
1960.3	29.5	Casing joints, 9 5/8in; 1998; 1864.5 TVD; 37.68; 1864.5-1897.4 TVD; 1960.3-1998	Niobrara, Original Hole	4	15901	15902	10/1/2024
1999.3	29.2	Casing Joints, 5 1/2in; 6349.2; 25 TVD; 6,324.19; 25-5637.4 TVD; 25-6349.2	Niobrara, Original Hole	4	15949	15950	10/1/2024
6349.1	28.3	Casing Joints, 5 1/2in; 7914.6; 5655.6 TVD; 1,544.62; 5655.6-6710.8 TVD; 6370-7914.6	Niobrara, Original Hole	4	15998	15999	10/1/2024
7263.5	43.4		Niobrara, Original Hole	4	16028	16029	10/1/2024
7661.4	74.9		Niobrara, Original Hole	4	16076	16077	10/1/2024
7668.6	75.3		Niobrara, Original Hole	4	16124	16125	10/1/2024
7857.9	89.0		Niobrara, Original Hole	4	16173	16174	10/1/2024
7916.3	90.6		Niobrara, Original Hole	4	16221	16222	10/1/2024
8129.9	89.8		Niobrara, Original Hole	4	16270	16271	10/1/2024
8398.0	89.9		Niobrara, Original Hole	4	16300	16301	10/1/2024
8674.9	89.6		Niobrara, Original Hole	4	16348	16349	10/1/2024
8946.9	89.6		Niobrara, Original Hole	4	16396	16397	10/1/2024
9219.2	89.7		Niobrara, Original Hole	4	16445	16446	10/1/2024
9492.1	89.1		Niobrara, Original Hole	4	16493	16494	10/1/2024
9764.1	88.8		Niobrara, Original Hole	4	16542	16543	10/1/2024
10036.1	89.0		Niobrara, Original Hole	4	16573	16574	10/1/2024
10309.1	89.3	Casing Joints, 5 1/2in; 12913.3; 6710.8 TVD; 4,996.84; 6710.8-6764.2 TVD; 7916.5-12913.3	Niobrara, Original Hole	4	16621	16622	10/1/2024
10581.0	89.4		Niobrara, Original Hole	4	16669	16670	10/1/2024
10853.0	89.1		Niobrara, Original Hole	4	16718	16719	10/1/2024
11126.0	89.0		Niobrara, Original Hole	4	16766	16767	10/1/2024
11398.0	89.1		Niobrara, Original Hole	4	16815	16816	10/1/2024
11669.9	89.4		Niobrara, Original Hole	4	16845	16846	9/30/2024
11943.9	89.5		Niobrara, Original Hole	4	16893	16894	9/30/2024
12214.9	89.2		Niobrara, Original Hole	4	16941	16942	9/30/2024
12486.9	89.3		Niobrara, Original Hole	4	16990	16991	9/30/2024
12759.8	89.6		Niobrara, Original Hole	4	17038	17039	9/30/2024
12935.7	89.6		Niobrara, Original Hole	4	17087	17088	9/30/2024
13032.2	89.5		Niobrara, Original Hole	4	17117	17118	9/30/2024
13305.1	90.1		Niobrara, Original Hole	4	17165	17166	9/30/2024
13577.1	90.3		Niobrara, Original Hole	4	17213	17214	9/30/2024
13849.1	90.1		Niobrara, Original Hole	4	17262	17263	9/30/2024
14122.0	90.3		Niobrara, Original Hole	4	17310	17311	9/30/2024
14392.1	89.7		Niobrara, Original Hole	4	17359	17360	9/30/2024
14666.0	90.1		Niobrara, Original Hole	4	17390	17391	9/30/2024
14939.0	89.7		Niobrara, Original Hole	4	17438	17439	9/30/2024
15211.0	89.7	Casing Joints, 5 1/2in; 17933.4; 6764.4 TVD; 4,997.72; 6764.4-6757.4 TVD; 12935.7-17933.4	Niobrara, Original Hole	4	17486	17487	9/30/2024
15482.9	90.0		Niobrara, Original Hole	4	17538	17539	9/30/2024
15755.9	89.7		Niobrara, Original Hole	4	17583	17584	9/30/2024
16027.9	90.6		Niobrara, Original Hole	4	17632	17633	9/30/2024
16299.9	90.5		Niobrara, Original Hole	4	17662	17663	9/29/2024
16573.2	90.4		Niobrara, Original Hole	4	17622	17623	9/29/2024
16845.1	90.6		Niobrara, Original Hole	4	17708	17709	9/29/2024
17117.1	90.5		Niobrara, Original Hole	4	17760	17761	9/29/2024
17390.1	89.8		Niobrara, Original Hole	4	17807	17808	9/29/2024
17662.1	90.0		Niobrara, Original Hole	4	17855	17856	9/29/2024
17933.4	89.9		Niobrara, Original Hole	4	17904	17905	9/29/2024
17937.0	89.9	Landing Collar, 5 1/2in; 17958; 6757.4 TVD; 2.55; 6757.4-6757.4 TVD; 17955.4-17958	Niobrara, Original Hole	12	17935	17937	8/6/2024
17958.0	89.9	Float Collar, 5 1/2in; 17971.7; 6757.4 TVD; 3.75; 6757.4-6757.4 TVD; 17968-17971.7					
17971.8	89.9						
Total				900			
Job Supply Amounts							
Supply Item Des		Job Supply Type		Uni...	Job Category		Total... Total... Total...
Daily Cost Breakdown by Category							
Field Est (Cost)		Description			Note		