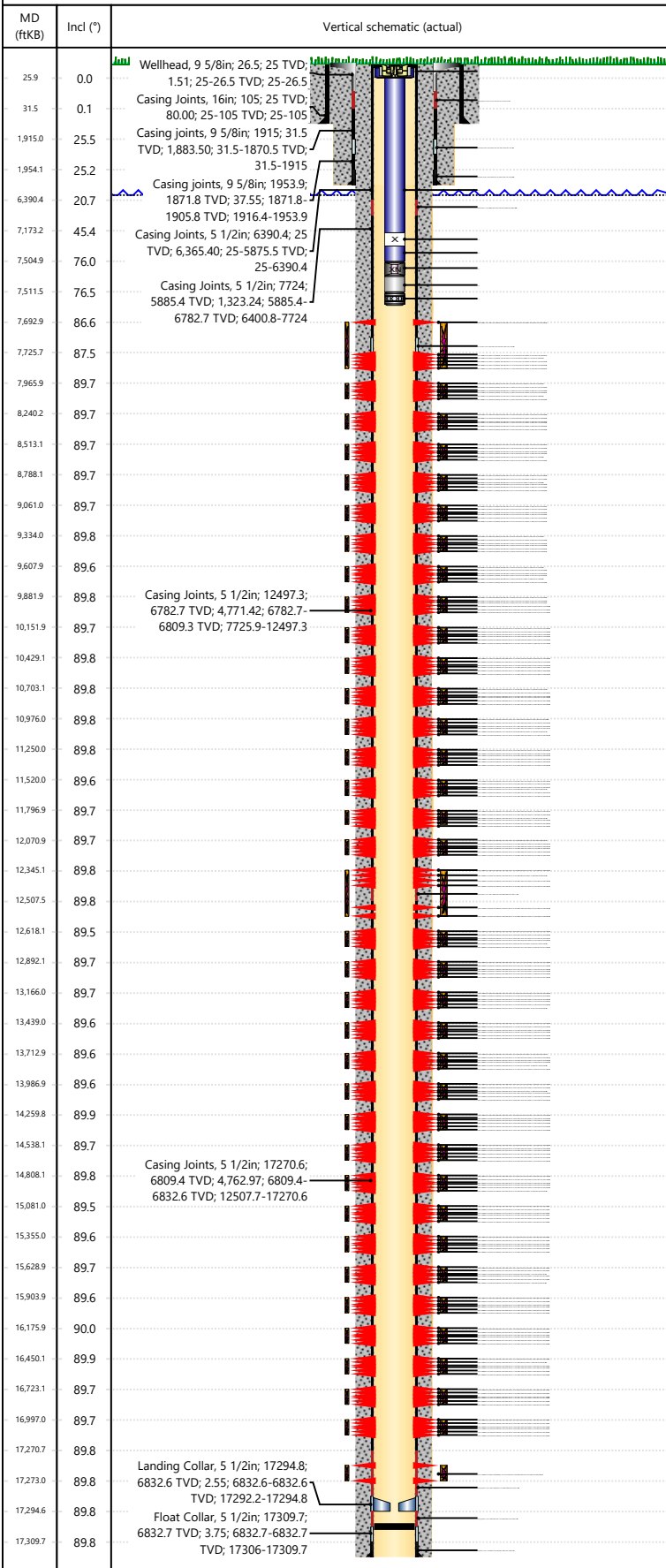




Wellbore Schematic Input Report

Well Name: George 13N

Original Hole [Land]



Well Header						
Surface UWI 0512351787		Asset Team 10004111		Production Tree Location Land		
Original RKB Elevation (ft) 4,743.00		Original KB to Ground (ft) 25.00		Original Spud Date 4/9/2024		Abandon Date
Range 64W			Well Sub-Status PR		High Press... N	
Directions To Well WCR 42-53 East 6/10 North into. ALL traffic must arrive from and leave to the West via CR 53				Latitude (°) 40° 17' 59.784" N		Longitude (°) 104° 33' 16.099" W
Comment						
Congressional Location						
Quarter 3 SW	Quarter 4 NE	Section 21	Township 4	Twntshp N/S Dir N	Range 64	Range E/W Dir W
Rig Operator						
Rig/Unit Supervisor Shawn Johnson						
Daily Cost Summary						
Sum of Field Est (Cost) 0						
Wellbore Plug Back Total Depths						
Date	PBTD (ftKB)	Method	Com			
12/11/2024	17,306	Casing Tally				
Wellbore Sections						
Section Des		Hole Size (in)	Top Depth (ftKB)		Btm Depth (ftKB)	
Conductor		16	25.0		105.0	
Surface		13 1/2	105.0		1,965.0	
Production		8 1/2	1,965.0		17,319.0	
Zone Statuses						
Zone Name		Status Date		Status		
Niobrara		11/27/2024		Open		
Casing Strings						
Conductor, Actual, 105ftKB						
Casing Description	Run Date	OD (in)	Wt/Len (L...)	Grade	Top Depth...	Set Depth...
Conductor	2/6/2024	16	84.00	J-55	25	105
Surface, Actual, 1955.4ftKB						
Casing Description	Run Date	OD (in)	Wt/Len (L...)	Grade	Top Depth...	Set Depth...
Surface	2/28/2024	9 5/8	36.00	J-55	25	1955.4
Production, Actual, 17313ftKB						
Casing Description	Run Date	OD (in)	Wt/Len (L...)	Grade	Top Depth...	Set Depth...
Production	4/11/2024	5 1/2	20.00	P-110	25	17313
Cement						
Des		Start Date		Top (ftKB)		Btm (ftKB)
Conductor Cement		2/6/2024		25.0		105.0
Surface		2/28/2024		25.0		1,955.4
Production Casing Cement		4/12/2024		25.0		17,313.0
Proposed Cement						
Des		Top (ftKB)		Btm (ftKB)		
Tubing Strings						
Tubing Description	Run Date	String...	ID (in)	Wt (lb/ft)	Grade	Len (ft) Set De...
Tubing - Production	11/17/2024	4	2 3/8	1.995	4.70	L-80 7,487.29 6,758.2
Tubing Components						
Item Des	OD (in)	Wt (lb/ft)	Grade	Jts	Len (ft)	Btm (ftKB) Btm (TVD) (ftKB)
Tubing Hanger	5			1	0.85	25.9 25.9
Tubing	2 3/8	4.70	L-80	216	7,147.44	7,173.3 6,594.4
X-Nipple	2 3/8	4.70	L-80	1	0.85	7,174.2 6,595.0
Tubing	2 3/8	4.70	L-80	10	330.65	7,504.8 6,756.4
XN - Nipple	2 3/8	4.70	L-80	1	0.80	7,505.6 6,756.6
Tubing Pup Joint	2 3/8	4.70	L-80	1	5.90	7,511.5 6,758.0
MULE SHOE/RD	2 3/8	4.70	L-80	1	0.80	7,512.3 6,758.2
Other In Hole						
Run Date	Des		Make	OD (in)	Top (ftKB)	Btm (ftKB)

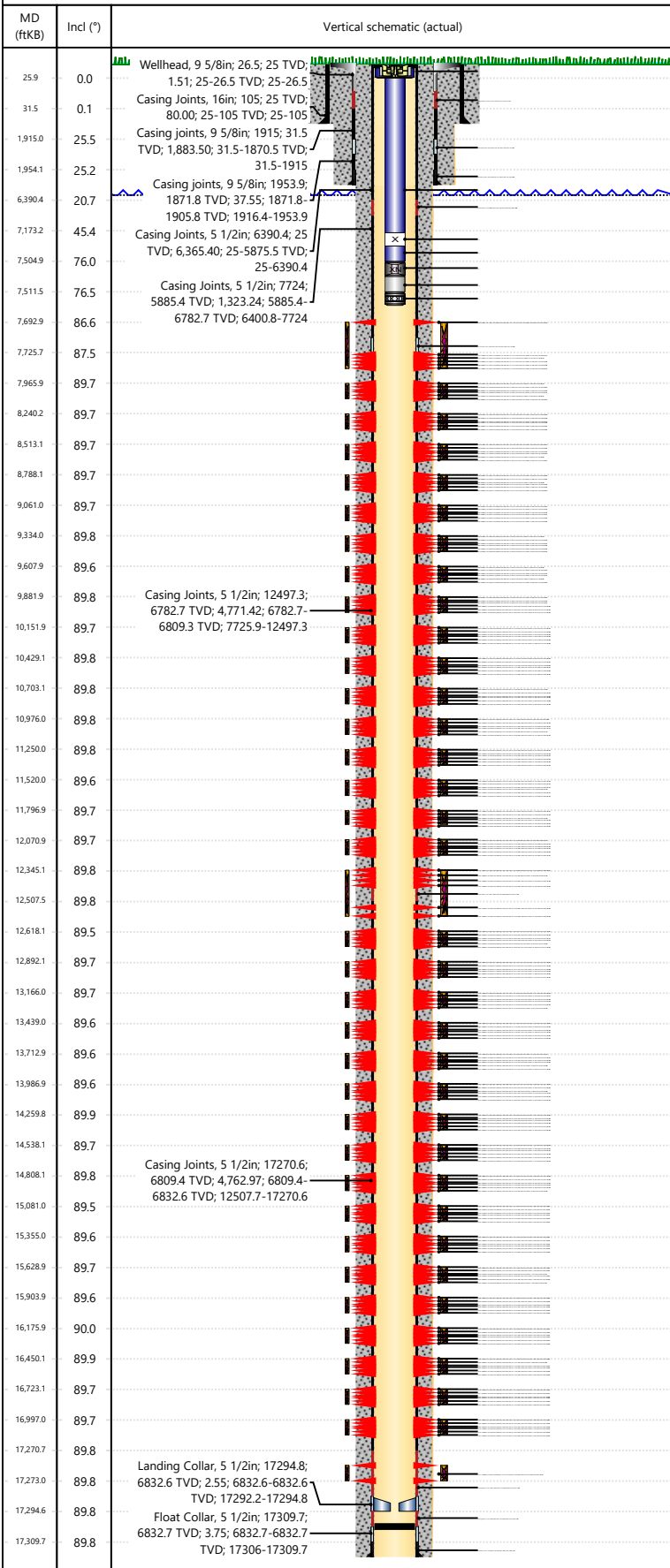


Wellbore Schematic Input Report

Well Name: George 13N

Original Hole [Land]

Proposed Other In Hole



Des	Make	OD (in)	Top (ftKB)	Btm (ftKB)
-----	------	---------	------------	------------

Logs

Date	Type	Depth Top (MD) (ftKB)	Btm (ftKB)
------	------	-----------------------	------------

Perforation Data

Linked Zone	Sum of Entered Shot Total	Top (ftKB)	Btm (ftKB)	Date
Niobrara, Original Hole	4	7693	7694	10/17/2024
Niobrara, Original Hole	4	7741	7742	10/17/2024
Niobrara, Original Hole	4	7790	7791	10/17/2024
Niobrara, Original Hole	4	7839	7840	10/17/2024
Niobrara, Original Hole	4	7888	7889	10/17/2024
Niobrara, Original Hole	4	7937	7938	10/17/2024
Niobrara, Original Hole	4	7966	7967	10/17/2024
Niobrara, Original Hole	4	8014	8015	10/17/2024
Niobrara, Original Hole	4	8063	8064	10/17/2024
Niobrara, Original Hole	4	8112	8113	10/17/2024
Niobrara, Original Hole	4	8161	8162	10/17/2024
Niobrara, Original Hole	4	8207	8208	10/17/2024
Niobrara, Original Hole	4	8240	8241	10/17/2024
Niobrara, Original Hole	4	8288	8289	10/17/2024
Niobrara, Original Hole	4	8337	8338	10/17/2024
Niobrara, Original Hole	4	8383	8384	10/17/2024
Niobrara, Original Hole	4	8437	8438	10/17/2024
Niobrara, Original Hole	4	8484	8485	10/17/2024
Niobrara, Original Hole	4	8513	8514	10/17/2024
Niobrara, Original Hole	4	8560	8561	10/17/2024
Niobrara, Original Hole	4	8613	8614	10/17/2024
Niobrara, Original Hole	4	8659	8660	10/17/2024
Niobrara, Original Hole	4	8708	8709	10/17/2024
Niobrara, Original Hole	4	8757	8758	10/17/2024
Niobrara, Original Hole	4	8788	8789	10/16/2024
Niobrara, Original Hole	4	8835	8836	10/16/2024
Niobrara, Original Hole	4	8884	8885	10/16/2024
Niobrara, Original Hole	4	8933	8934	10/16/2024
Niobrara, Original Hole	4	8982	8983	10/16/2024
Niobrara, Original Hole	4	9031	9032	10/16/2024
Niobrara, Original Hole	4	9061	9062	10/16/2024
Niobrara, Original Hole	4	9109	9110	10/16/2024
Niobrara, Original Hole	4	9158	9159	10/16/2024
Niobrara, Original Hole	4	9207	9208	10/16/2024
Niobrara, Original Hole	4	9256	9257	10/16/2024
Niobrara, Original Hole	4	9305	9306	10/16/2024
Niobrara, Original Hole	4	9334	9335	10/16/2024
Niobrara, Original Hole	4	9382	9383	10/16/2024
Niobrara, Original Hole	4	9431	9432	10/16/2024
Niobrara, Original Hole	4	9480	9481	10/16/2024
Niobrara, Original Hole	4	9529	9530	10/16/2024
Niobrara, Original Hole	4	9578	9579	10/16/2024
Niobrara, Original Hole	4	9608	9609	10/16/2024
Niobrara, Original Hole	4	9656	9657	10/16/2024
Niobrara, Original Hole	4	9705	9706	10/16/2024
Niobrara, Original Hole	4	9752	9753	10/16/2024
Niobrara, Original Hole	4	9807	9808	10/16/2024
Niobrara, Original Hole	4	9852	9853	10/16/2024
Niobrara, Original Hole	4	9882	9883	10/16/2024
Niobrara, Original Hole	4	9930	9931	10/16/2024
Niobrara, Original Hole	4	9975	9976	10/16/2024
Niobrara, Original Hole	4	10028	10029	10/16/2024
Niobrara, Original Hole	4	10077	10078	10/16/2024
Niobrara, Original Hole	4	10126	10127	10/16/2024



Wellbore Schematic Input Report

Well Name: George 13N

Original Hole [Land]			Perforation Data				
MD (ftKB)	Incl (°)	Vertical schematic (actual)	Linked Zone	Sum of Entered Shot Total	Top (ftKB)	Btm (ftKB)	Date
25.9	0.0	Wellhead, 9 5/8in; 26.5; 25 TVD; 1.51; 25-26.5 TVD; 25-26.5	Niobrara, Original Hole	4	10152	10153	10/15/2024
31.5	0.1	Casing Joints, 16in; 105; 25 TVD; 80.00; 25-105 TVD; 25-105	Niobrara, Original Hole	4	10206	10207	10/15/2024
1,915.0	25.5	Casing joints, 9 5/8in; 1915; 31.5 TVD; 1,883.50; 31.5-1870.5 TVD; 31.5-1915	Niobrara, Original Hole	4	10252	10253	10/15/2024
1,954.1	25.2	Casing joints, 9 5/8in; 1953.9; 1871.8 TVD; 37.55; 1871.8-1905.8 TVD; 1916.4-1953.9	Niobrara, Original Hole	4	10301	10302	10/15/2024
6,390.4	20.7	Casing joints, 5 1/2in; 6390.4; 25 TVD; 6,365.40; 25-5875.5 TVD; 25-6390.4	Niobrara, Original Hole	4	10350	10351	10/15/2024
7,173.2	45.4	Casing Joints, 5 1/2in; 6390.4; 25 TVD; 6,365.40; 25-5875.5 TVD; 25-6390.4	Niobrara, Original Hole	4	10399	10400	10/15/2024
7,504.9	76.0	Casing Joints, 5 1/2in; 7724; 5885.4 TVD; 1,323.24; 5885.4-6782.7 TVD; 6400.8-7724	Niobrara, Original Hole	4	10429	10430	10/15/2024
7,511.5	76.5		Niobrara, Original Hole	4	10477	10478	10/15/2024
7,692.9	86.6		Niobrara, Original Hole	4	10526	10527	10/15/2024
7,725.7	87.5		Niobrara, Original Hole	4	10575	10576	10/15/2024
7,965.9	89.7		Niobrara, Original Hole	4	10624	10625	10/15/2024
8,240.2	89.7		Niobrara, Original Hole	4	10673	10674	10/15/2024
8,513.1	89.7		Niobrara, Original Hole	4	10703	10704	10/15/2024
8,788.1	89.7		Niobrara, Original Hole	4	10751	10752	10/15/2024
9,061.0	89.7		Niobrara, Original Hole	4	10800	10801	10/15/2024
9,334.0	89.8		Niobrara, Original Hole	4	10849	10850	10/15/2024
9,607.9	89.6		Niobrara, Original Hole	4	10898	10899	10/15/2024
9,881.9	89.8	Casing Joints, 5 1/2in; 12497.3; 6782.7 TVD; 4,771.42; 6782.7-6809.3 TVD; 7725.9-12497.3	Niobrara, Original Hole	4	10945	10946	10/15/2024
10,151.9	89.7		Niobrara, Original Hole	4	10976	10977	10/15/2024
10,429.1	89.8		Niobrara, Original Hole	4	11024	11025	10/15/2024
10,703.1	89.8		Niobrara, Original Hole	4	11073	11074	10/15/2024
10,976.0	89.8		Niobrara, Original Hole	4	11122	11123	10/15/2024
11,250.0	89.8		Niobrara, Original Hole	4	11167	11168	10/15/2024
11,520.0	89.6		Niobrara, Original Hole	4	11220	11221	10/15/2024
11,796.9	89.7		Niobrara, Original Hole	4	11250	11251	10/15/2024
12,070.9	89.7		Niobrara, Original Hole	4	11298	11299	10/15/2024
12,345.1	89.8		Niobrara, Original Hole	4	11343	11344	10/15/2024
12,507.5	89.8		Niobrara, Original Hole	4	11398	11399	10/15/2024
12,618.1	89.5		Niobrara, Original Hole	4	11445	11446	10/15/2024
12,892.1	89.7		Niobrara, Original Hole	4	11494	11495	10/15/2024
13,166.0	89.7		Niobrara, Original Hole	4	11520	11521	10/14/2024
13,439.0	89.6		Niobrara, Original Hole	4	11574	11575	10/14/2024
13,712.9	89.6		Niobrara, Original Hole	4	11621	11622	10/14/2024
13,986.9	89.6		Niobrara, Original Hole	4	11670	11671	10/14/2024
14,259.8	89.9		Niobrara, Original Hole	4	11719	11720	10/14/2024
14,538.1	89.7		Niobrara, Original Hole	4	11768	11769	10/14/2024
14,808.1	89.8	Casing Joints, 5 1/2in; 17270.6; 6809.4 TVD; 4,762.97; 6809.4-6832.6 TVD; 12507.7-17270.6	Niobrara, Original Hole	4	11797	11798	10/14/2024
15,081.0	89.5		Niobrara, Original Hole	4	11845	11846	10/14/2024
15,355.0	89.6		Niobrara, Original Hole	4	11894	11895	10/14/2024
15,628.9	89.7		Niobrara, Original Hole	4	11943	11944	10/14/2024
15,903.9	89.6		Niobrara, Original Hole	4	11992	11993	10/14/2024
16,175.9	90.0		Niobrara, Original Hole	4	12041	12042	10/14/2024
16,450.1	89.9		Niobrara, Original Hole	4	12071	12072	10/14/2024
16,723.1	89.7		Niobrara, Original Hole	4	12119	12120	10/14/2024
16,997.0	89.7		Niobrara, Original Hole	4	12168	12169	10/14/2024
17,270.7	89.8		Niobrara, Original Hole	4	12217	12218	10/14/2024
17,273.0	89.8	Landing Collar, 5 1/2in; 17294.8; 6832.6 TVD; 2.55; 6832.6-6832.6 TVD; 17292.2-17294.8	Niobrara, Original Hole	4	12266	12267	10/14/2024
17,294.6	89.8		Niobrara, Original Hole	4	12315	12316	10/14/2024
17,309.7	89.8	Float Collar, 5 1/2in; 17309.7; 6832.7 TVD; 3.75; 6832.7-6832.7 TVD; 17306-17309.7	Niobrara, Original Hole	4	12345	12346	10/14/2024
			Niobrara, Original Hole	4	12393	12394	10/14/2024
			Niobrara, Original Hole	4	12442	12443	10/14/2024
			Niobrara, Original Hole	4	12491	12492	10/14/2024
			Niobrara, Original Hole	4	12540	12541	10/14/2024
			Niobrara, Original Hole	4	12589	12590	10/14/2024
			Niobrara, Original Hole	4	12638	12639	10/14/2024
			Niobrara, Original Hole	4	12687	12688	10/14/2024
			Niobrara, Original Hole	4	12736	12737	10/14/2024
			Niobrara, Original Hole	4	12785	12786	10/14/2024
			Niobrara, Original Hole	4	12834	12835	10/14/2024
			Niobrara, Original Hole	4	12883	12884	10/14/2024
			Niobrara, Original Hole	4	12932	12933	10/14/2024
			Niobrara, Original Hole	4	12981	12982	10/14/2024
			Niobrara, Original Hole	4	13030	13031	10/14/2024
			Niobrara, Original Hole	4	13079	13080	10/14/2024
			Niobrara, Original Hole	4	13128	13129	10/14/2024
			Niobrara, Original Hole	4	13177	13178	10/14/2024
			Niobrara, Original Hole	4	13226	13227	10/14/2024
			Niobrara, Original Hole	4	13275	13276	10/14/2024
			Niobrara, Original Hole	4	13324	13325	10/14/2024
			Niobrara, Original Hole	4	13373	13374	10/14/2024
			Niobrara, Original Hole	4	13422	13423	10/14/2024
			Niobrara, Original Hole	4	13471	13472	10/14/2024
			Niobrara, Original Hole	4	13520	13521	10/14/2024
			Niobrara, Original Hole	4	13569	13570	10/14/2024
			Niobrara, Original Hole	4	13618	13619	10/14/2024
			Niobrara, Original Hole	4	13667	13668	10/14/2024
			Niobrara, Original Hole	4	13716	13717	10/14/2024
			Niobrara, Original Hole	4	13765	13766	10/14/2024
			Niobrara, Original Hole	4	13814	13815	10/14/2024
			Niobrara, Original Hole	4	13863	13864	10/14/2024
			Niobrara, Original Hole	4	13912	13913	10/14/2024
			Niobrara, Original Hole	4	13961	13962	10/14/2024
			Niobrara, Original Hole	4	14010	14011	10/14/2024
			Niobrara, Original Hole	4	14059	14060	10/14/2024
			Niobrara, Original Hole	4	14108	14109	10/14/2024
			Niobrara, Original Hole	4	14157	14158	10/14/2024
			Niobrara, Original Hole	4	14206	14207	10/14/2024
			Niobrara, Original Hole	4	14255	14256	10/14/2024
			Niobrara, Original Hole	4	14304	14305	10/14/2024
			Niobrara, Original Hole	4	14353	14354	10/14/2024
			Niobrara, Original Hole	4	14402	14403	10/14/2024
			Niobrara, Original Hole	4	14451	14452	10/14/2024
			Niobrara, Original Hole	4	14500	14501	10/14/2024
			Niobrara, Original Hole	4	14549	14550	10/14/2024
			Niobrara, Original Hole	4	14598	14599	10/14/2024
			Niobrara, Original Hole	4	14647	14648	10/14/2024
			Niobrara, Original Hole	4	14696	14697	10/14/2024
			Niobrara, Original Hole	4	14745	14746	10/14/2024
			Niobrara, Original Hole	4	14794	14795	10/14/2024
			Niobrara, Original Hole	4	14843	14844	10/14/2024
			Niobrara, Original Hole	4	14892	14893	10/14/2024
			Niobrara, Original Hole	4	14941	14942	10/14/2024
			Niobrara, Original Hole	4	14990	14991	10/14/2024
			Niobrara, Original Hole	4	15039	15040	10/14/2024
			Niobrara, Original Hole	4	15088	15089	10/14/2024
			Niobrara, Original Hole	4	15137	15138	10/14/2024
			Niobrara, Original Hole	4	15186	15187	10/14/2024
			Niobrara, Original Hole	4	15235	15236	10/14/2024
			Niobrara, Original Hole	4	15284	15285	10/14/2024
			Niobrara, Original Hole	4	15333	15334	10/14/2024
			Niobrara, Original Hole	4	15382	15383	10/14/2024
			Niobrara, Original Hole	4	15431	15432	10/14/2024
			Niobrara, Original Hole	4	15480	15481	10/14/2024
			Niobrara, Original Hole	4	15529	15530	10/14/2024
			Niobrara, Original Hole	4	15578	15579	10/14/2024
			Niobrara, Original Hole	4	15627	15628	10/14/2024
			Niobrara, Original Hole	4	15676	15677	10/14/2024
			Niobrara, Original Hole	4	15725	15726	10/14/2024
			Niobrara, Original Hole	4	15774	15775	10/14/2024
			Niobrara, Original Hole	4	15823	15824	10/14/2024
			Niobrara, Original Hole	4	15872	15873	10/14/2024
			Niobrara, Original Hole	4	15921	15922	10/14/2024
			Niobrara, Original Hole	4	15970	15971	10/14/2024
			Niobrara, Original Hole	4	16019	16020	10/14/2024
			Niobrara, Original Hole	4	16068	16069	10/14/2024
			Niobrara, Original Hole	4	16117	16118	10/14/2024
			Niobrara, Original Hole	4	16166	16167	10/14/2024
			Niobrara, Original Hole	4	16215	16216	10/14/2024
			Niobrara, Original Hole	4	16264	16265	10/14/2024
			Niobrara, Original Hole	4	16313	16314	10/14/2024
			Niobrara, Original Hole	4	16362	16363	10/14/2024
			Niobrara, Original Hole	4	16411	16412	10/14/2024
			Niobrara, Original Hole	4	16460	16461	10/14/2024
			Niobrara, Original Hole	4	16509	16510	10/14/2024
			Niobrara, Original Hole	4	16558	16559	10/14/2024
			Niobrara, Original Hole	4	16607	16608	10/14/2024



Wellbore Schematic Input Report

Well Name: George 13N

Original Hole [Land]			Perforation Data				
MD (ftKB)	Incl (°)	Vertical schematic (actual)	Linked Zone	Sum of Entered Shot Total	Top (ftKB)	Btm (ftKB)	Date
25.9	0.0	Wellhead, 9 5/8in; 26.5; 25 TVD; 1.51; 25-26.5 TVD; 25-26.5	Niobrara, Original Hole	4	12892	12893	10/14/2024
31.5	0.1	Casing Joints, 16in; 105; 25 TVD; 80.00; 25-105 TVD; 25-105	Niobrara, Original Hole	4	12940	12941	10/14/2024
1.915.0	25.5	Casing joints, 9 5/8in; 1915; 31.5 TVD; 1,883.50; 31.5-1870.5 TVD; 31.5-1915	Niobrara, Original Hole	4	12989	12990	10/14/2024
1.954.1	25.2	Casing joints, 9 5/8in; 1953.9; 1871.8 TVD; 37.55; 1871.8-1905.8 TVD; 1916.4-1953.9	Niobrara, Original Hole	4	13034	13035	10/14/2024
6.390.4	20.7	Casing Joints, 5 1/2in; 6390.4; 25 TVD; 6,365.40; 25-5875.5 TVD; 25-6390.4	Niobrara, Original Hole	4	13087	13088	10/14/2024
7.173.2	45.4	Casing Joints, 5 1/2in; 7724; 5885.4 TVD; 1,323.24; 5885.4-6782.7 TVD; 6400.8-7724	Niobrara, Original Hole	4	13136	13137	10/14/2024
7.504.9	76.0		Niobrara, Original Hole	4	13166	13167	10/13/2024
7.511.5	76.5		Niobrara, Original Hole	4	13217	13218	10/13/2024
7.692.9	86.6		Niobrara, Original Hole	4	13263	13264	10/13/2024
7.725.7	87.5		Niobrara, Original Hole	4	13276	13277	10/13/2024
7.965.9	89.7		Niobrara, Original Hole	4	13312	13313	10/13/2024
8.240.2	89.7		Niobrara, Original Hole	4	13361	13362	10/13/2024
8.513.1	89.7		Niobrara, Original Hole	4	13410	13411	10/13/2024
8.788.1	89.7		Niobrara, Original Hole	4	13439	13440	10/13/2024
9.061.0	89.7		Niobrara, Original Hole	4	13487	13488	10/13/2024
9.334.0	89.8		Niobrara, Original Hole	4	13536	13537	10/13/2024
9.607.9	89.6		Niobrara, Original Hole	4	13585	13586	10/13/2024
9.881.9	89.8	Casing Joints, 5 1/2in; 12497.3; 6782.7 TVD; 4,771.42; 6782.7-6809.3 TVD; 7725.9-12497.3	Niobrara, Original Hole	4	13634	13635	10/13/2024
10.151.9	89.7		Niobrara, Original Hole	4	13683	13684	10/13/2024
10.429.1	89.8		Niobrara, Original Hole	4	13713	13714	10/13/2024
10.703.1	89.8		Niobrara, Original Hole	4	13761	13762	10/13/2024
10.976.0	89.8		Niobrara, Original Hole	4	13810	13811	10/13/2024
11.250.0	89.8		Niobrara, Original Hole	4	13859	13860	10/13/2024
11.520.0	89.6		Niobrara, Original Hole	4	13908	13909	10/13/2024
11.796.9	89.7		Niobrara, Original Hole	4	13957	13958	10/13/2024
12.070.9	89.7		Niobrara, Original Hole	4	13987	13988	10/13/2024
12.345.1	89.8		Niobrara, Original Hole	4	14035	14036	10/13/2024
12.507.5	89.8		Niobrara, Original Hole	4	14084	14085	10/13/2024
12.618.1	89.5		Niobrara, Original Hole	4	14133	14134	10/13/2024
12.892.1	89.7		Niobrara, Original Hole	4	14179	14180	10/13/2024
13.166.0	89.7		Niobrara, Original Hole	4	14231	14232	10/13/2024
13.439.0	89.6		Niobrara, Original Hole	4	14260	14261	10/13/2024
13.712.9	89.6		Niobrara, Original Hole	4	14308	14309	10/13/2024
13.986.9	89.6		Niobrara, Original Hole	4	14353	14354	10/13/2024
14.259.8	89.9		Niobrara, Original Hole	4	14406	14407	10/13/2024
14.538.1	89.7		Niobrara, Original Hole	4	14455	14456	10/13/2024
14.808.1	89.8	Casing Joints, 5 1/2in; 17270.6; 6809.4 TVD; 4,762.97; 6809.4-6832.6 TVD; 12507.7-17270.6	Niobrara, Original Hole	4	14504	14505	10/13/2024
15.081.0	89.5		Niobrara, Original Hole	4	14538	14539	10/12/2024
15.355.0	89.6		Niobrara, Original Hole	4	14582	14583	10/12/2024
15.628.9	89.7		Niobrara, Original Hole	4	14631	14632	10/12/2024
15.903.9	89.6		Niobrara, Original Hole	4	14680	14681	10/12/2024
16.175.9	90.0		Niobrara, Original Hole	4	14729	14730	10/12/2024
16.450.1	89.9		Niobrara, Original Hole	4	14778	14779	10/12/2024
16.723.1	89.7		Niobrara, Original Hole	4	14808	14809	10/12/2024
16.997.0	89.7		Niobrara, Original Hole	4	14856	14857	10/12/2024
17.270.7	89.8		Niobrara, Original Hole	4	14905	14906	10/12/2024
17.273.0	89.8	Landing Collar, 5 1/2in; 17294.8; 6832.6 TVD; 2.55; 6832.6-6832.6 TVD; 17292.2-17294.8	Niobrara, Original Hole	4	14954	14955	10/12/2024
17.294.6	89.8	Float Collar, 5 1/2in; 17309.7; 6832.7 TVD; 3.75; 6832.7-6832.7 TVD; 17306-17309.7	Niobrara, Original Hole	4	15003	15004	10/12/2024
17.309.7	89.8		Niobrara, Original Hole	4	15052	15053	10/12/2024
			Niobrara, Original Hole	4	15081	15082	10/12/2024
			Niobrara, Original Hole	4	15129	15130	10/12/2024
			Niobrara, Original Hole	4	15178	15179	10/12/2024
			Niobrara, Original Hole	4	15227	15228	10/12/2024
			Niobrara, Original Hole	4	15276	15277	10/12/2024
			Niobrara, Original Hole	4	15325	15326	10/12/2024
			Niobrara, Original Hole	4	15355	15356	10/12/2024
			Niobrara, Original Hole	4	15403	15404	10/12/2024
			Niobrara, Original Hole	4	15452	15453	10/12/2024
			Niobrara, Original Hole	4	15501	15502	10/12/2024
			Niobrara, Original Hole	4	15550	15551	10/12/2024
			Niobrara, Original Hole	4	15599	15600	10/12/2024



Wellbore Schematic Input Report

Well Name: George 13N

Original Hole [Land]			Perforation Data				
MD (ftKB)	Incl (°)	Vertical schematic (actual)	Linked Zone	Sum of Entered Shot Total	Top (ftKB)	Btm (ftKB)	Date
25.9	0.0	Wellhead, 9 5/8in; 26.5; 25 TVD; 1.51; 25-26.5 TVD; 25-26.5	Niobrara, Original Hole	4	15629	15630	10/12/2024
31.5	0.1	Casing Joints, 16in; 105; 25 TVD; 80.00; 25-105 TVD; 25-105	Niobrara, Original Hole	4	15677	15678	10/12/2024
1.915.0	25.5	Casing joints, 9 5/8in; 1915; 31.5 TVD; 1,883.50; 31.5-1870.5 TVD; 31.5-1915	Niobrara, Original Hole	4	15726	15727	10/12/2024
1.954.1	25.2	Casing joints, 9 5/8in; 1953.9; 1871.8 TVD; 37.55; 1871.8-1905.8 TVD; 1916.4-1953.9	Niobrara, Original Hole	4	15775	15776	10/12/2024
6.390.4	20.7	Casing Joints, 5 1/2in; 6390.4; 25 TVD; 6,365.40; 25-5875.5 TVD; 25-6390.4	Niobrara, Original Hole	4	15824	15825	10/12/2024
7.173.2	45.4	Casing Joints, 5 1/2in; 7724; 5885.4 TVD; 1,323.24; 5885.4-6782.7 TVD; 6400.8-7724	Niobrara, Original Hole	4	15873	15874	10/12/2024
7.504.9	76.0		Niobrara, Original Hole	4	15904	15905	10/12/2024
7.511.5	76.5		Niobrara, Original Hole	4	15950	15951	10/12/2024
7.692.9	86.6		Niobrara, Original Hole	4	15999	16000	10/12/2024
7.725.7	87.5		Niobrara, Original Hole	4	16048	16049	10/12/2024
7.965.9	89.7		Niobrara, Original Hole	4	16097	16098	10/12/2024
8.240.2	89.7		Niobrara, Original Hole	4	16146	16147	10/12/2024
8.513.1	89.7		Niobrara, Original Hole	4	16176	16177	10/11/2024
8.788.1	89.7		Niobrara, Original Hole	4	16224	16225	10/11/2024
9.061.0	89.7		Niobrara, Original Hole	4	16273	16274	10/11/2024
9.334.0	89.8		Niobrara, Original Hole	4	16322	16323	10/11/2024
9.607.9	89.6		Niobrara, Original Hole	4	16371	16372	10/11/2024
9.881.9	89.8	Casing Joints, 5 1/2in; 12497.3; 6782.7 TVD; 4,771.42; 6782.7-6809.3 TVD; 7725.9-12497.3	Niobrara, Original Hole	4	16420	16421	10/11/2024
10.151.9	89.7		Niobrara, Original Hole	4	16450	16451	10/11/2024
10.429.1	89.8		Niobrara, Original Hole	4	16498	16499	10/11/2024
10.703.1	89.8		Niobrara, Original Hole	4	16547	16548	10/11/2024
10.976.0	89.8		Niobrara, Original Hole	4	16596	16597	10/11/2024
11.250.0	89.8		Niobrara, Original Hole	4	16645	16646	10/11/2024
11.520.0	89.6		Niobrara, Original Hole	4	16691	16692	10/11/2024
11.796.9	89.7		Niobrara, Original Hole	4	16723	16724	10/11/2024
12.070.9	89.7		Niobrara, Original Hole	4	16771	16772	10/11/2024
12.345.1	89.8		Niobrara, Original Hole	4	16820	16821	10/11/2024
12.507.5	89.8		Niobrara, Original Hole	4	16869	16870	10/11/2024
12.618.1	89.5		Niobrara, Original Hole	4	16919	16920	10/11/2024
12.892.1	89.7		Niobrara, Original Hole	4	16967	16968	10/11/2024
13.166.0	89.7		Niobrara, Original Hole	4	16997	16998	10/11/2024
13.439.0	89.6		Niobrara, Original Hole	4	17045	17046	10/11/2024
13.712.9	89.6		Niobrara, Original Hole	4	17096	17097	10/11/2024
13.986.9	89.6		Niobrara, Original Hole	4	17143	17144	10/11/2024
14.259.8	89.9		Niobrara, Original Hole	4	17192	17193	10/11/2024
14.538.1	89.7		Niobrara, Original Hole	4	17241	17242	10/11/2024
14.808.1	89.8	Casing Joints, 5 1/2in; 17270.6; 6809.4 TVD; 4,762.97; 6809.4-6832.6 TVD; 12507.7-17270.6	Niobrara, Original Hole	4	17271	17273	8/12/2024
15.081.0	89.5						
15.355.0	89.6						
15.628.9	89.7						
15.903.9	89.6						
16.175.9	90.0						
16.450.1	89.9						
16.723.1	89.7						
16.997.0	89.7						
17.270.7	89.8						
17.273.0	89.8	Landing Collar, 5 1/2in; 17294.8; 6832.6 TVD; 2.55; 6832.6-6832.6 TVD; 17292.2-17294.8					
17.294.6	89.8	Float Collar, 5 1/2in; 17309.7; 6832.7 TVD; 3.75; 6832.7-6832.7 TVD; 17306-17309.7					
17.309.7	89.8						
Total				852			
Job Supply Amounts							
Supply Item Des		Job Supply Type	Uni...	Job Category	Total...	Total...	Total...
Daily Cost Breakdown by Category							
Field Est (Cost)		Description	Note				