

# **CRESTONE PEAK RESOURCES**

**ADAMS COUNTY**

**SEC 21-T3S-R65W**

**BIJOU 3-65 20-19-24 2AH**

**OWB**

**Design: FINAL SURVEY**

## **Standard Survey Report**

**16 October, 2024**

Project: ADAMS COUNTY  
Site: SEC 21-T3S-R65W  
Well: BIJOU 3-65 20-19-24 2AH  
Wellbore: OWB  
Design: FINAL SURVEY

PROJECT DETAILS: ADAMS COUNTY  
Geodetic System: US State Plane 1983  
Datum: North American Datum 1983  
Ellipsoid: GRS 1980  
Zone: Colorado Northern Zone  
System Datum: Mean Sea Level



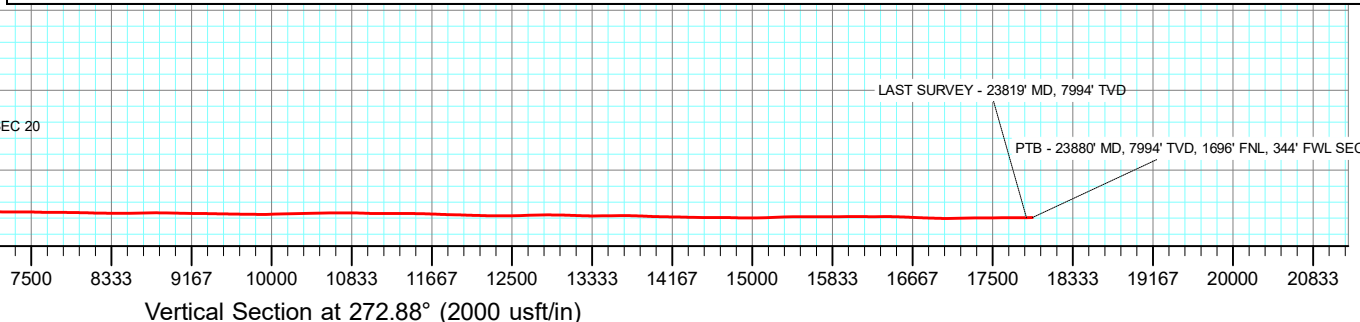
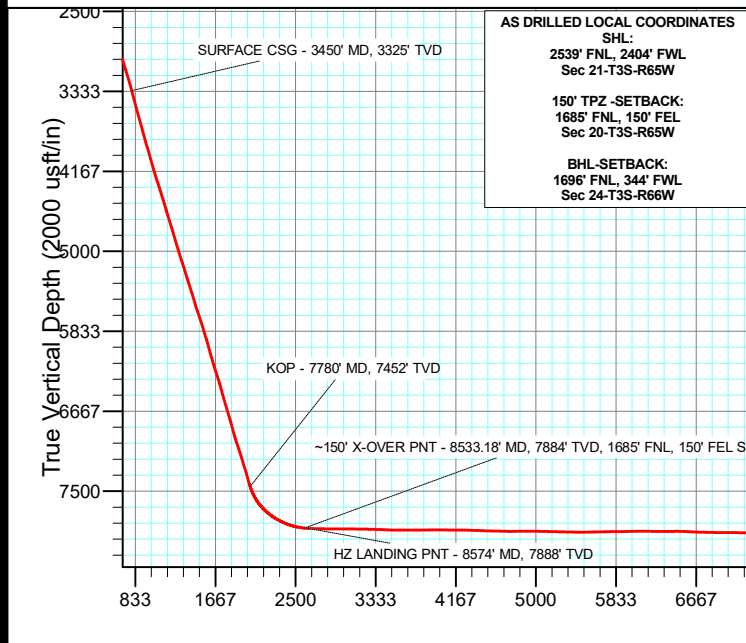
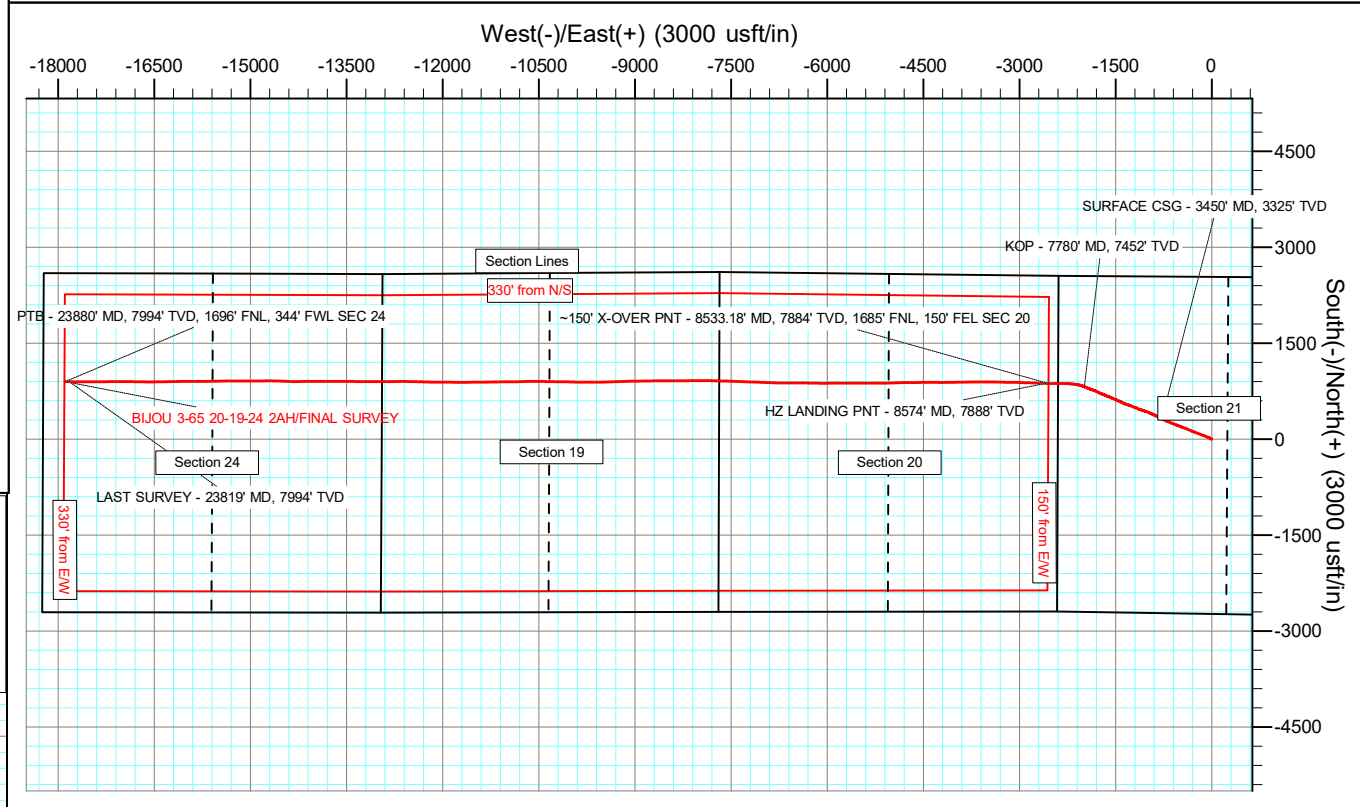
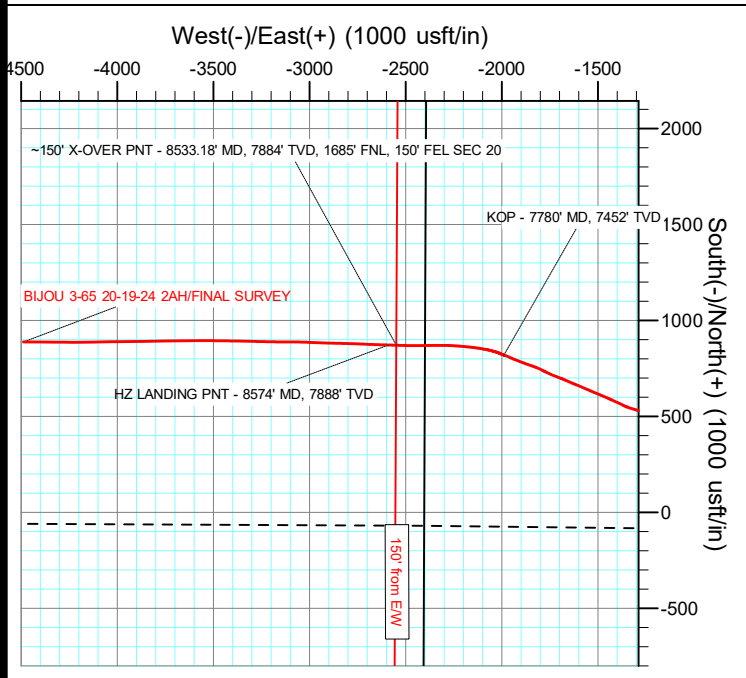
Azimuths to True North  
Magnetic North: 7.39°  
Magnetic Field  
Strength: 51280.4nT  
Dip Angle: 66.03°  
Date: 10/9/2024  
Model: IGRF2020

WELL DETAILS: BIJOU 3-65 20-19-24 2AH

+N/-S	+E/-W	Northing	Easting	5593.00 Latitude	Longitude	Slot
0.00	0.00	1162583.58	3233376.63	39.776661°N	104.669676°W	

ANNOTATIONS

MD	Inc	Azi	TVD	+N/-S	+E/-W	VSect	Departure	Annotation
3450.00	16.14	296.61	3325.28	318.31	-780.36	795.36	842.79	SURFACE CSG - 3450' MD, 3325' TVD
7780.00	19.00	291.30	7451.80	820.01	-1988.49	2027.14	2154.56	KOP - 7780' MD, 7452' TVD
8533.18	83.53	271.81	7884.31	871.38	-2548.97	2589.49	2720.00	~150' X-OVER PNT - 8533.18' MD, 7884' TVD, 1685' FNL, 150' FEL SEC 20
8574.00	86.40	271.72	7887.89	872.64	-2589.61	2630.15	2760.67	HZ LANDING PNT - 8574' MD, 7888' TVD
23819.00	90.30	270.10	7994.24	899.03	-17628.82	17851.47	18002.29	LAST SURVEY - 23819' MD, 7994' TVD
23880.00	90.30	270.10	7993.92	899.13	-17689.82	17912.40	18063.29	PTB - 23880' MD, 7994' TVD, 1696' FNL, 344' FWL SEC 24



## Civitas Resources

## Survey Report

<b>Company:</b>	CRESTONE PEAK RESOURCES	<b>Local Co-ordinate Reference:</b>	Well BIJOU 3-65 20-19-24 2AH
<b>Project:</b>	ADAMS COUNTY	<b>TVD Reference:</b>	KB 25' @ 5618.00usft
<b>Site:</b>	SEC 21-T3S-R65W	<b>MD Reference:</b>	KB 25' @ 5618.00usft
<b>Well:</b>	BIJOU 3-65 20-19-24 2AH	<b>North Reference:</b>	True
<b>Wellbore:</b>	OWB	<b>Survey Calculation Method:</b>	Minimum Curvature
<b>Design:</b>	FINAL SURVEY	<b>Database:</b>	EDM

<b>Project</b>	ADAMS COUNTY		
<b>Map System:</b>	US State Plane 1983	<b>System Datum:</b>	Mean Sea Level
<b>Geo Datum:</b>	North American Datum 1983		
<b>Map Zone:</b>	Colorado Northern Zone		Using geodetic scale factor

<b>Site</b>	SEC 21-T3S-R65W		
<b>Site Position:</b>		<b>Northing:</b>	1,165,129.40 usft
<b>From:</b>	Lat/Long	<b>Easting:</b>	3,236,258.06 usft
<b>Position Uncertainty:</b>	0.00 usft	<b>Slot Radius:</b>	13.200 in
		<b>Latitude:</b>	39.783575°N
		<b>Longitude:</b>	104.659339°W
		<b>Grid Convergence:</b>	0.54 °

Well		BIJOU 3-65 20-19-24 2AH				
Well Position	+N/-S	0.00 usft	Northing:	1,162,583.57 usft	Latitude:	39.776661°N
	+E/-W	0.00 usft	Easting:	3,233,376.63 usft	Longitude:	104.669676°W
Position Uncertainty		0.00 usft	Wellhead Elevation:	usft	Ground Level:	5,593.00 usft

<b>Wellbore</b>	OWB				
<b>Magnetics</b>	<b>Model Name</b>	<b>Sample Date</b>	<b>Declination (°)</b>	<b>Dip Angle (°)</b>	<b>Field Strength (nT)</b>
	IGRF2020	10/9/2024	7.39	66.03	51,280.42496839

<b>Design</b>	FINAL SURVEY				
<b>Audit Notes:</b>					
<b>Version:</b>	1.0	<b>Phase:</b>	ACTUAL	<b>Tie On Depth:</b>	0.00
<b>Vertical Section:</b>	<b>Depth From (TVD) (usft)</b>	<b>+N/-S (usft)</b>	<b>+E/-W (usft)</b>	<b>Direction (°)</b>	
	0.00	0.00	0.00	272.88	

<b>Survey Program</b>	<b>Date</b>	10/16/2024			
<b>From (usft)</b>	<b>To (usft)</b>	<b>Survey (Wellbore)</b>	<b>Tool Name</b>	<b>Description</b>	
215.00	3,324.00	SURFACE SURVEY (OWB)	MWD OWSG	OWSG MWD - Standard	
3,498.00	23,880.00	FINAL SURVEY (OWB)	MWD OWSG	OWSG MWD - Standard	

<b>Survey</b>										
<b>Measured Depth (usft)</b>	<b>Inclination (°)</b>	<b>Azimuth (°)</b>	<b>Vertical Depth (usft)</b>	<b>+N/-S (usft)</b>	<b>+E/-W (usft)</b>	<b>Vertical Section (usft)</b>	<b>Dogleg Rate (°/100ft)</b>	<b>Build Rate (°/100ft)</b>	<b>Turn Rate (°/100ft)</b>	
0.00	0.00	0.00	0.00	0.00	0.00	0.00	0.00	0.00	0.00	
215.00	0.16	247.66	215.00	-0.11	-0.28	0.27	0.07	0.07	0.00	
304.00	0.17	299.96	304.00	-0.10	-0.51	0.50	0.16	0.01	58.76	
395.00	2.45	290.24	394.97	0.64	-2.45	2.48	2.51	2.51	-10.68	
484.00	4.74	299.51	483.79	3.11	-7.43	7.58	2.65	2.57	10.42	
579.00	6.04	303.49	578.37	7.81	-15.02	15.39	1.42	1.37	4.19	
674.00	9.45	297.76	672.49	14.20	-26.09	26.77	3.68	3.59	-6.03	
769.00	13.33	292.11	765.60	21.96	-43.15	44.19	4.24	4.08	-5.95	
863.00	14.59	292.52	856.82	30.57	-64.12	65.58	1.34	1.34	0.44	
958.00	15.07	292.99	948.66	39.98	-86.55	88.44	0.52	0.51	0.49	

# Civitas Resources

## Survey Report

<b>Company:</b>	CRESTONE PEAK RESOURCES	<b>Local Co-ordinate Reference:</b>	Well BIJOU 3-65 20-19-24 2AH
<b>Project:</b>	ADAMS COUNTY	<b>TVD Reference:</b>	KB 25' @ 5618.00usft
<b>Site:</b>	SEC 21-T3S-R65W	<b>MD Reference:</b>	KB 25' @ 5618.00usft
<b>Well:</b>	BIJOU 3-65 20-19-24 2AH	<b>North Reference:</b>	True
<b>Wellbore:</b>	OWB	<b>Survey Calculation Method:</b>	Minimum Curvature
<b>Design:</b>	FINAL SURVEY	<b>Database:</b>	EDM

Survey									
Measured Depth (usft)	Inclination (°)	Azimuth (°)	Vertical Depth (usft)	+N/-S (usft)	+E/-W (usft)	Vertical Section (usft)	Dogleg Rate (°/100ft)	Build Rate (°/100ft)	Turn Rate (°/100ft)
1,052.00	14.98	291.35	1,039.45	49.17	-109.11	111.44	0.46	-0.10	-1.74
1,147.00	15.14	292.33	1,131.18	58.36	-132.02	134.78	0.32	0.17	1.03
1,241.00	16.15	290.26	1,221.70	67.55	-155.64	158.84	1.23	1.07	-2.20
1,336.00	16.47	289.71	1,312.88	76.66	-180.71	184.33	0.37	0.34	-0.58
1,430.00	16.79	290.37	1,402.95	85.88	-205.99	210.04	0.40	0.34	0.70
1,525.00	17.27	291.30	1,493.78	95.78	-231.99	236.50	0.58	0.51	0.98
1,620.00	17.38	290.51	1,584.47	105.88	-258.42	263.40	0.27	0.12	-0.83
1,714.00	16.75	290.94	1,674.33	115.64	-284.22	289.66	0.68	-0.67	0.46
1,809.00	17.99	291.54	1,765.00	125.91	-310.65	316.58	1.32	1.31	0.63
1,904.00	19.29	292.61	1,855.01	137.33	-338.78	345.25	1.41	1.37	1.13
1,999.00	19.07	292.59	1,944.74	149.33	-367.59	374.63	0.23	-0.23	-0.02
2,093.00	19.79	292.66	2,033.38	161.36	-396.46	404.06	0.77	0.77	0.07
2,188.00	18.80	291.05	2,123.05	173.05	-425.59	433.74	1.18	-1.04	-1.69
2,283.00	18.17	290.77	2,213.15	183.80	-453.72	462.38	0.67	-0.66	-0.29
2,377.00	16.85	289.75	2,302.79	193.61	-480.25	489.36	1.44	-1.40	-1.09
2,472.00	17.50	292.09	2,393.55	203.63	-506.44	516.03	1.00	0.68	2.46
2,567.00	16.33	290.44	2,484.44	213.67	-532.19	542.25	1.33	-1.23	-1.74
2,661.00	18.73	292.93	2,574.07	224.16	-558.48	569.03	2.67	2.55	2.65
2,756.00	18.36	292.03	2,664.14	235.72	-586.40	597.49	0.49	-0.39	-0.95
2,851.00	17.85	289.92	2,754.44	246.29	-613.96	625.55	0.87	-0.54	-2.22
2,945.00	18.17	293.00	2,843.83	256.93	-640.99	653.08	1.07	0.34	3.28
3,040.00	17.55	292.92	2,934.25	268.29	-667.82	680.45	0.65	-0.65	-0.08
3,134.00	16.66	292.35	3,024.09	278.93	-693.34	706.46	0.96	-0.95	-0.61
3,229.00	18.64	295.19	3,114.62	290.58	-719.67	733.35	2.27	2.08	2.99
3,324.00	17.95	293.23	3,204.82	302.81	-746.86	761.12	0.97	-0.73	-2.06
3,450.00	16.14	296.61	3,325.28	318.31	-780.36	795.36	1.64	-1.44	2.68
SURFACE CSG - 3450' MD, 3325' TVD									
3,498.00	15.46	298.10	3,371.47	324.32	-791.97	807.25	1.64	-1.41	3.10
3,593.00	17.08	297.69	3,462.66	336.76	-815.49	831.37	1.71	1.71	-0.43
3,687.00	15.94	296.84	3,552.79	349.01	-839.23	855.70	1.24	-1.21	-0.90
3,782.00	17.41	295.92	3,643.79	361.11	-863.66	880.70	1.57	1.55	-0.97
3,876.00	15.68	295.49	3,733.89	372.72	-887.77	905.36	1.85	-1.84	-0.46
3,971.00	16.84	294.32	3,825.09	383.92	-911.90	930.02	1.27	1.22	-1.23
4,065.00	18.36	293.76	3,914.69	395.49	-937.86	956.53	1.63	1.62	-0.60
4,160.00	16.18	294.02	4,005.40	406.91	-963.65	982.86	2.30	-2.29	0.27
4,255.00	16.97	291.80	4,096.45	417.44	-988.61	1,008.32	1.07	0.83	-2.34
4,350.00	17.40	292.87	4,187.21	428.11	-1,014.57	1,034.78	0.56	0.45	1.13
4,444.00	19.48	288.51	4,276.39	438.55	-1,042.39	1,063.09	2.65	2.21	-4.64
4,539.00	17.05	287.60	4,366.59	447.79	-1,070.69	1,091.82	2.58	-2.56	-0.96
4,634.00	18.70	287.99	4,457.00	456.71	-1,098.45	1,119.99	1.74	1.74	0.41
4,729.00	16.08	286.04	4,547.65	465.05	-1,125.58	1,147.51	2.82	-2.76	-2.05
4,823.00	18.06	293.76	4,637.52	474.52	-1,151.44	1,173.81	3.20	2.11	8.21
4,918.00	18.81	294.06	4,727.64	486.70	-1,178.90	1,201.84	0.80	0.79	0.32

# Civitas Resources

## Survey Report

<b>Company:</b>	CRESTONE PEAK RESOURCES	<b>Local Co-ordinate Reference:</b>	Well BIJOU 3-65 20-19-24 2AH
<b>Project:</b>	ADAMS COUNTY	<b>TVD Reference:</b>	KB 25' @ 5618.00usft
<b>Site:</b>	SEC 21-T3S-R65W	<b>MD Reference:</b>	KB 25' @ 5618.00usft
<b>Well:</b>	BIJOU 3-65 20-19-24 2AH	<b>North Reference:</b>	True
<b>Wellbore:</b>	OWB	<b>Survey Calculation Method:</b>	Minimum Curvature
<b>Design:</b>	FINAL SURVEY	<b>Database:</b>	EDM

Survey										
Measured Depth (usft)	Inclination (°)	Azimuth (°)	Vertical Depth (usft)	+N/-S (usft)	+E/-W (usft)	Vertical Section (usft)	Dogleg Rate (°/100ft)	Build Rate (°/100ft)	Turn Rate (°/100ft)	
5,012.00	17.12	291.28	4,817.06	497.90	-1,205.63	1,229.11	2.02	-1.80	-2.96	
5,107.00	17.38	292.24	4,907.79	508.34	-1,231.80	1,255.76	0.41	0.27	1.01	
5,202.00	17.64	290.09	4,998.39	518.66	-1,258.45	1,282.90	0.73	0.27	-2.26	
5,296.00	19.32	290.99	5,087.54	529.12	-1,286.34	1,311.28	1.81	1.79	0.96	
5,391.00	17.73	285.79	5,177.62	538.69	-1,314.94	1,340.32	2.41	-1.67	-5.47	
5,485.00	17.31	288.82	5,267.26	547.09	-1,341.95	1,367.72	1.07	-0.45	3.22	
5,580.00	19.52	296.92	5,357.40	558.84	-1,369.49	1,395.81	3.55	2.33	8.53	
5,675.00	18.58	294.51	5,447.20	572.31	-1,397.41	1,424.38	1.29	-0.99	-2.54	
5,769.00	17.43	295.13	5,536.60	584.50	-1,423.78	1,451.33	1.24	-1.22	0.66	
5,864.00	20.24	293.17	5,626.50	597.01	-1,451.78	1,479.91	3.03	2.96	-2.06	
5,958.00	19.27	292.98	5,714.97	609.46	-1,481.01	1,509.73	1.03	-1.03	-0.20	
6,053.00	17.64	292.28	5,805.08	621.04	-1,508.76	1,538.03	1.73	-1.72	-0.74	
6,148.00	18.09	293.92	5,895.50	632.48	-1,535.56	1,565.37	0.71	0.47	1.73	
6,242.00	16.21	292.58	5,985.32	643.43	-1,561.02	1,591.35	2.04	-2.00	-1.43	
6,337.00	17.01	294.03	6,076.35	654.18	-1,585.95	1,616.79	0.95	0.84	1.53	
6,431.00	17.28	291.16	6,166.18	664.82	-1,611.53	1,642.87	0.94	0.29	-3.05	
6,526.00	19.49	293.84	6,256.32	676.32	-1,639.19	1,671.07	2.49	2.33	2.82	
6,620.00	18.11	293.20	6,345.31	688.42	-1,666.96	1,699.42	1.48	-1.47	-0.68	
6,715.00	15.51	291.42	6,436.24	698.87	-1,692.36	1,725.31	2.79	-2.74	-1.87	
6,809.00	16.81	290.40	6,526.52	708.20	-1,716.80	1,750.19	1.42	1.38	-1.09	
6,904.00	17.46	293.30	6,617.31	718.63	-1,742.77	1,776.65	1.13	0.68	3.05	
6,998.00	18.90	297.03	6,706.62	731.13	-1,769.29	1,803.75	1.97	1.53	3.97	
7,093.00	16.17	295.94	6,797.19	743.91	-1,794.89	1,829.97	2.89	-2.87	-1.15	
7,187.00	15.99	292.59	6,887.52	754.61	-1,818.62	1,854.20	1.01	-0.19	-3.56	
7,282.00	18.62	288.39	6,978.21	764.42	-1,845.09	1,881.14	3.06	2.77	-4.42	
7,376.00	19.60	290.22	7,067.03	774.60	-1,874.13	1,910.65	1.22	1.04	1.95	
7,471.00	17.23	291.08	7,157.16	785.17	-1,902.21	1,939.23	2.51	-2.49	0.91	
7,566.00	18.69	291.39	7,247.53	795.78	-1,929.52	1,967.03	1.54	1.54	0.33	
7,660.00	16.77	294.02	7,337.06	806.80	-1,955.93	1,993.96	2.21	-2.04	2.80	
7,755.00	16.83	290.73	7,428.01	817.25	-1,981.31	2,019.84	1.00	0.06	-3.46	
7,780.00	19.00	291.30	7,451.80	820.01	-1,988.49	2,027.14	8.72	8.69	2.30	
KOP - 7780' MD, 7452' TVD										
7,850.00	25.09	292.40	7,516.65	829.81	-2,012.85	2,051.97	8.72	8.70	1.57	
7,945.00	33.73	283.71	7,599.36	843.77	-2,057.20	2,096.96	10.12	9.09	-9.15	
8,040.00	43.00	278.71	7,673.79	854.95	-2,114.99	2,155.24	10.28	9.76	-5.26	
8,135.00	52.16	275.64	7,737.81	863.57	-2,184.50	2,225.09	9.93	9.64	-3.23	
8,229.00	59.81	273.18	7,790.36	869.48	-2,262.12	2,302.91	8.42	8.14	-2.62	
8,324.00	67.08	268.43	7,832.82	870.56	-2,347.00	2,387.74	8.86	7.65	-5.00	
8,418.00	75.24	269.90	7,863.15	869.29	-2,435.88	2,476.44	8.81	8.68	1.56	
8,513.00	82.12	271.86	7,881.79	870.74	-2,528.96	2,569.48	7.52	7.24	2.06	
8,533.18	83.53	271.81	7,884.31	871.38	-2,548.97	2,589.49	7.01	7.01	-0.23	
~150' X-OVER PNT - 8533.18' MD, 7884' TVD, 1685' FNL, 150' FEL SEC 20										
8,574.00	86.40	271.72	7,887.89	872.64	-2,589.61	2,630.15	7.01	7.01	-0.22	
HZ LANDING PNT - 8574' MD, 7888' TVD										

# Civitas Resources

## Survey Report

<b>Company:</b>	CRESTONE PEAK RESOURCES	<b>Local Co-ordinate Reference:</b>	Well BIJOU 3-65 20-19-24 2AH
<b>Project:</b>	ADAMS COUNTY	<b>TVD Reference:</b>	KB 25' @ 5618.00usft
<b>Site:</b>	SEC 21-T3S-R65W	<b>MD Reference:</b>	KB 25' @ 5618.00usft
<b>Well:</b>	BIJOU 3-65 20-19-24 2AH	<b>North Reference:</b>	True
<b>Wellbore:</b>	OWB	<b>Survey Calculation Method:</b>	Minimum Curvature
<b>Design:</b>	FINAL SURVEY	<b>Database:</b>	EDM

Survey										
Measured Depth (usft)	Inclination (°)	Azimuth (°)	Vertical Depth (usft)	+N/-S (usft)	+E/-W (usft)	Vertical Section (usft)	Dogleg Rate (°/100ft)	Build Rate (°/100ft)	Turn Rate (°/100ft)	
8,607.00	88.71	271.65	7,889.30	873.61	-2,622.56	2,663.11	7.01	7.01	-0.22	
8,702.00	88.82	272.64	7,891.35	877.16	-2,717.47	2,758.07	1.05	0.12	1.04	
8,797.00	89.55	271.26	7,892.70	880.39	-2,812.40	2,853.05	1.64	0.77	-1.45	
8,892.00	89.75	271.87	7,893.28	882.99	-2,907.37	2,948.02	0.68	0.21	0.64	
8,986.00	90.04	272.45	7,893.45	886.53	-3,001.30	3,042.01	0.69	0.31	0.62	
9,080.00	89.15	269.94	7,894.12	888.49	-3,095.27	3,135.96	2.83	-0.95	-2.67	
9,174.00	88.93	270.94	7,895.69	889.21	-3,189.25	3,229.86	1.09	-0.23	1.06	
9,269.00	88.55	271.28	7,897.78	891.05	-3,284.21	3,324.80	0.54	-0.40	0.36	
9,364.00	87.94	271.26	7,900.69	893.16	-3,379.14	3,419.71	0.64	-0.64	-0.02	
9,458.00	87.89	270.70	7,904.11	894.76	-3,473.06	3,513.60	0.60	-0.05	-0.60	
9,553.00	90.01	269.67	7,905.85	895.07	-3,568.04	3,608.47	2.48	2.23	-1.08	
9,647.00	90.52	269.73	7,905.42	894.58	-3,662.04	3,702.33	0.55	0.54	0.06	
9,742.00	90.76	268.89	7,904.36	893.43	-3,757.02	3,797.13	0.92	0.25	-0.88	
9,840.00	90.95	268.86	7,902.89	891.51	-3,854.99	3,894.88	0.20	0.19	-0.03	
9,935.00	89.31	269.76	7,902.68	890.37	-3,949.98	3,989.70	1.97	-1.73	0.95	
10,030.00	89.05	268.79	7,904.04	889.16	-4,044.96	4,084.50	1.06	-0.27	-1.02	
10,124.00	90.19	269.02	7,904.66	887.37	-4,138.94	4,178.27	1.24	1.21	0.24	
10,219.00	88.38	270.32	7,905.85	886.82	-4,233.93	4,273.11	2.35	-1.91	1.37	
10,313.00	88.34	270.42	7,908.54	887.43	-4,327.89	4,366.98	0.11	-0.04	0.11	
10,408.00	87.54	270.39	7,911.95	888.10	-4,422.82	4,461.83	0.84	-0.84	-0.03	
10,503.00	89.29	269.93	7,914.58	888.36	-4,517.78	4,556.68	1.90	1.84	-0.48	
10,598.00	88.03	268.17	7,916.80	886.79	-4,612.74	4,651.44	2.28	-1.33	-1.85	
10,692.00	90.05	269.89	7,918.38	885.20	-4,706.70	4,745.20	2.82	2.15	1.83	
10,787.00	90.45	269.04	7,917.96	884.31	-4,801.70	4,840.03	0.99	0.42	-0.89	
10,881.00	90.12	268.85	7,917.49	882.58	-4,895.68	4,933.81	0.41	-0.35	-0.20	
10,976.00	89.28	267.16	7,917.99	879.27	-4,990.62	5,028.46	1.99	-0.88	-1.78	
11,071.00	88.50	268.78	7,919.83	875.91	-5,085.54	5,123.09	1.89	-0.82	1.71	
11,166.00	88.84	270.68	7,922.04	875.46	-5,180.50	5,217.92	2.03	0.36	2.00	
11,260.00	88.69	270.26	7,924.06	876.23	-5,274.48	5,311.81	0.47	-0.16	-0.45	
11,355.00	88.43	270.35	7,926.45	876.74	-5,369.45	5,406.69	0.29	-0.27	0.09	
11,450.00	91.33	270.64	7,926.65	877.56	-5,464.43	5,501.59	3.07	3.05	0.31	
11,542.00	91.28	269.82	7,924.55	877.93	-5,556.41	5,593.47	0.89	-0.05	-0.89	
11,637.00	91.49	269.17	7,922.26	877.09	-5,651.38	5,688.28	0.72	0.22	-0.68	
11,731.00	90.30	269.95	7,920.79	876.37	-5,745.36	5,782.11	1.51	-1.27	0.83	
11,826.00	90.53	270.13	7,920.10	876.44	-5,840.36	5,876.99	0.31	0.24	0.19	
11,921.00	90.69	269.39	7,919.09	876.04	-5,935.35	5,971.84	0.80	0.17	-0.78	
12,015.00	90.84	268.84	7,917.84	874.59	-6,029.33	6,065.63	0.61	0.16	-0.59	
12,110.00	89.35	271.48	7,917.68	874.85	-6,124.32	6,160.51	3.19	-1.57	2.78	
12,205.00	89.22	270.84	7,918.86	876.77	-6,219.29	6,255.46	0.69	-0.14	-0.67	
12,299.00	90.52	271.16	7,919.08	878.42	-6,313.27	6,349.41	1.42	1.38	0.34	
12,394.00	90.72	270.44	7,918.05	879.74	-6,408.26	6,444.34	0.79	0.21	-0.76	
12,489.00	87.77	269.53	7,919.30	879.72	-6,503.24	6,539.20	3.25	-3.11	-0.96	
12,584.00	86.69	269.36	7,923.89	878.80	-6,598.12	6,633.92	1.15	-1.14	-0.18	

# Civitas Resources

## Survey Report

<b>Company:</b>	CRESTONE PEAK RESOURCES	<b>Local Co-ordinate Reference:</b>	Well BIJOU 3-65 20-19-24 2AH
<b>Project:</b>	ADAMS COUNTY	<b>TVD Reference:</b>	KB 25' @ 5618.00usft
<b>Site:</b>	SEC 21-T3S-R65W	<b>MD Reference:</b>	KB 25' @ 5618.00usft
<b>Well:</b>	BIJOU 3-65 20-19-24 2AH	<b>North Reference:</b>	True
<b>Wellbore:</b>	OWB	<b>Survey Calculation Method:</b>	Minimum Curvature
<b>Design:</b>	FINAL SURVEY	<b>Database:</b>	EDM

Survey										
Measured Depth (usft)	Inclination (°)	Azimuth (°)	Vertical Depth (usft)	+N/-S (usft)	+E/-W (usft)	Vertical Section (usft)	Dogleg Rate (°/100ft)	Build Rate (°/100ft)	Turn Rate (°/100ft)	
12,678.00	89.10	271.03	7,927.34	879.12	-6,692.05	6,727.74	3.12	2.56	1.78	
12,773.00	88.48	270.78	7,929.35	880.62	-6,787.01	6,822.66	0.70	-0.65	-0.26	
12,868.00	90.26	272.56	7,930.39	883.39	-6,881.96	6,917.63	2.65	1.87	1.87	
12,962.00	89.53	272.09	7,930.57	887.20	-6,975.88	7,011.62	0.92	-0.78	-0.50	
13,057.00	88.55	271.86	7,932.16	890.47	-7,070.81	7,106.60	1.06	-1.03	-0.24	
13,152.00	88.38	271.91	7,934.70	893.60	-7,165.73	7,201.55	0.19	-0.18	0.05	
13,246.00	90.69	272.17	7,935.47	896.94	-7,259.66	7,295.53	2.47	2.46	0.28	
13,341.00	90.22	272.34	7,934.71	900.68	-7,354.58	7,390.52	0.53	-0.49	0.18	
13,436.00	89.22	271.69	7,935.18	904.02	-7,449.52	7,485.51	1.26	-1.05	-0.68	
13,531.00	88.20	272.55	7,937.31	907.54	-7,544.43	7,580.47	1.40	-1.07	0.91	
13,626.00	90.39	270.96	7,938.48	910.44	-7,639.37	7,675.44	2.85	2.31	-1.67	
13,720.00	89.55	271.45	7,938.53	912.42	-7,733.34	7,769.40	1.03	-0.89	0.52	
13,815.00	88.68	271.00	7,940.00	914.45	-7,828.31	7,864.34	1.03	-0.92	-0.47	
13,909.00	89.43	270.39	7,941.55	915.59	-7,922.29	7,958.26	1.03	0.80	-0.65	
14,003.00	88.81	269.34	7,942.99	915.37	-8,016.28	8,052.12	1.30	-0.66	-1.12	
14,098.00	87.61	269.37	7,945.96	914.30	-8,111.22	8,146.89	1.26	-1.26	0.03	
14,193.00	90.06	269.71	7,947.89	913.54	-8,206.19	8,241.70	2.60	2.58	0.36	
14,287.00	89.04	268.96	7,948.63	912.45	-8,300.18	8,335.52	1.35	-1.09	-0.80	
14,382.00	90.51	270.88	7,949.00	912.32	-8,395.17	8,430.38	2.55	1.55	2.02	
14,476.00	89.65	269.98	7,948.87	913.02	-8,489.17	8,524.30	1.32	-0.91	-0.96	
14,571.00	91.62	269.69	7,947.82	912.75	-8,584.16	8,619.15	2.10	2.07	-0.31	
14,665.00	91.99	268.83	7,944.86	911.53	-8,678.10	8,712.92	1.00	0.39	-0.91	
14,760.00	89.26	269.46	7,943.82	910.12	-8,773.08	8,807.70	2.95	-2.87	0.66	
14,855.00	88.88	269.41	7,945.36	909.18	-8,868.06	8,902.52	0.40	-0.40	-0.05	
14,950.00	88.87	269.01	7,947.23	907.87	-8,963.03	8,997.30	0.42	-0.01	-0.42	
15,044.00	89.20	268.99	7,948.81	906.23	-9,057.00	9,091.08	0.35	0.35	-0.02	
15,139.00	89.25	268.34	7,950.10	904.02	-9,151.97	9,185.81	0.69	0.05	-0.68	
15,234.00	89.37	268.65	7,951.24	901.52	-9,246.93	9,280.52	0.35	0.13	0.33	
15,328.00	88.62	267.77	7,952.89	898.59	-9,340.87	9,374.20	1.23	-0.80	-0.94	
15,422.00	89.35	268.52	7,954.56	895.54	-9,434.80	9,467.86	1.11	0.78	0.80	
15,517.00	88.53	268.07	7,956.31	892.72	-9,529.74	9,562.54	0.98	-0.86	-0.47	
15,612.00	89.53	270.62	7,957.92	891.63	-9,624.71	9,657.34	2.88	1.05	2.68	
15,706.00	89.39	269.36	7,958.81	891.62	-9,718.71	9,751.21	1.35	-0.15	-1.34	
15,801.00	88.88	269.46	7,960.24	890.64	-9,813.69	9,846.03	0.55	-0.54	0.11	
15,896.00	91.15	271.88	7,960.22	891.75	-9,908.67	9,940.94	3.49	2.39	2.55	
15,990.00	91.76	272.10	7,957.83	895.01	-10,002.58	10,034.90	0.69	0.65	0.23	
16,085.00	91.43	270.71	7,955.19	897.34	-10,097.52	10,129.83	1.50	-0.35	-1.46	
16,180.00	91.35	270.62	7,952.88	898.44	-10,192.48	10,224.73	0.13	-0.08	-0.09	
16,275.00	91.71	270.41	7,950.35	899.30	-10,287.44	10,319.62	0.44	0.38	-0.22	
16,369.00	90.62	271.97	7,948.43	901.25	-10,381.40	10,413.55	2.02	-1.16	1.66	
16,464.00	91.02	270.78	7,947.07	903.53	-10,476.36	10,508.51	1.32	0.42	-1.25	
16,559.00	90.38	269.49	7,945.91	903.75	-10,571.35	10,603.39	1.52	-0.67	-1.36	
16,653.00	90.17	269.30	7,945.46	902.76	-10,665.34	10,697.21	0.30	-0.22	-0.20	
16,747.00	90.91	268.27	7,944.58	900.77	-10,759.32	10,790.97	1.35	0.79	-1.10	

# Civitas Resources

## Survey Report

<b>Company:</b>	CRESTONE PEAK RESOURCES	<b>Local Co-ordinate Reference:</b>	Well BIJOU 3-65 20-19-24 2AH
<b>Project:</b>	ADAMS COUNTY	<b>TVD Reference:</b>	KB 25' @ 5618.00usft
<b>Site:</b>	SEC 21-T3S-R65W	<b>MD Reference:</b>	KB 25' @ 5618.00usft
<b>Well:</b>	BIJOU 3-65 20-19-24 2AH	<b>North Reference:</b>	True
<b>Wellbore:</b>	OWB	<b>Survey Calculation Method:</b>	Minimum Curvature
<b>Design:</b>	FINAL SURVEY	<b>Database:</b>	EDM

Survey									
Measured Depth (usft)	Inclination (°)	Azimuth (°)	Vertical Depth (usft)	+N/-S (usft)	+E/-W (usft)	Vertical Section (usft)	Dogleg Rate (°/100ft)	Build Rate (°/100ft)	Turn Rate (°/100ft)
16,842.00	88.08	269.26	7,945.41	898.72	-10,854.28	10,885.71	3.16	-2.98	1.04
16,936.00	87.86	269.32	7,948.74	897.55	-10,948.21	10,979.47	0.24	-0.23	0.06
17,031.00	89.17	269.47	7,951.21	896.55	-11,043.17	11,074.26	1.39	1.38	0.16
17,126.00	89.88	269.24	7,951.99	895.48	-11,138.17	11,169.07	0.79	0.75	-0.24
17,220.00	90.42	268.28	7,951.75	893.45	-11,232.14	11,262.83	1.17	0.57	-1.02
17,316.00	89.60	270.29	7,951.73	892.25	-11,328.13	11,358.64	2.26	-0.85	2.09
17,410.00	90.18	269.30	7,951.91	891.91	-11,422.13	11,452.50	1.22	0.62	-1.05
17,505.00	88.68	269.33	7,952.86	890.78	-11,517.11	11,547.31	1.58	-1.58	0.03
17,599.00	88.02	269.42	7,955.56	889.75	-11,611.07	11,641.09	0.71	-0.70	0.10
17,694.00	87.50	269.41	7,959.28	888.78	-11,705.99	11,735.85	0.55	-0.55	-0.01
17,789.00	88.67	270.72	7,962.45	888.89	-11,800.93	11,830.67	1.85	1.23	1.38
17,883.00	88.61	270.64	7,964.68	890.01	-11,894.90	11,924.58	0.11	-0.06	-0.09
17,978.00	87.61	270.00	7,967.81	890.54	-11,989.84	12,019.43	1.25	-1.05	-0.67
18,073.00	88.95	271.09	7,970.67	891.44	-12,084.79	12,114.31	1.82	1.41	1.15
18,168.00	87.70	270.33	7,973.44	892.62	-12,179.74	12,209.19	1.54	-1.32	-0.80
18,262.00	90.14	272.09	7,975.21	894.60	-12,273.69	12,303.13	3.20	2.60	1.87
18,357.00	89.95	271.52	7,975.14	897.60	-12,368.65	12,398.11	0.63	-0.20	-0.60
18,452.00	90.68	271.51	7,974.62	900.11	-12,463.61	12,493.08	0.77	0.77	-0.01
18,547.00	92.17	270.72	7,972.25	901.96	-12,558.56	12,588.00	1.78	1.57	-0.83
18,641.00	91.75	269.63	7,969.04	902.24	-12,652.50	12,681.84	1.24	-0.45	-1.16
18,736.00	91.81	269.38	7,966.09	901.42	-12,747.45	12,776.63	0.27	0.06	-0.26
18,831.00	88.92	270.12	7,965.48	901.01	-12,842.44	12,871.48	3.14	-3.04	0.78
18,925.00	89.79	270.27	7,966.54	901.33	-12,936.43	12,965.37	0.94	0.93	0.16
19,019.00	87.98	270.41	7,968.37	901.88	-13,030.41	13,059.25	1.93	-1.93	0.15
19,114.00	88.24	269.57	7,971.50	901.87	-13,125.36	13,154.08	0.93	0.27	-0.88
19,209.00	87.91	269.29	7,974.70	900.92	-13,220.30	13,248.86	0.46	-0.35	-0.29
19,304.00	90.18	270.73	7,976.28	900.94	-13,315.28	13,343.71	2.83	2.39	1.52
19,399.00	90.58	270.99	7,975.65	902.37	-13,410.26	13,438.65	0.50	0.42	0.27
19,493.00	90.72	270.68	7,974.58	903.74	-13,504.25	13,532.59	0.36	0.15	-0.33
19,588.00	91.18	269.58	7,973.01	903.95	-13,599.23	13,627.46	1.25	0.48	-1.16
19,683.00	88.37	270.11	7,973.38	903.69	-13,694.22	13,722.32	3.01	-2.96	0.56
19,777.00	88.01	270.05	7,976.35	903.83	-13,788.17	13,816.16	0.39	-0.38	-0.06
19,872.00	87.32	269.01	7,980.22	903.05	-13,883.09	13,910.92	1.31	-0.73	-1.09
19,966.00	88.72	271.09	7,983.47	903.13	-13,977.03	14,004.74	2.67	1.49	2.21
20,061.00	88.94	270.17	7,985.41	904.17	-14,072.00	14,099.65	1.00	0.23	-0.97
20,156.00	89.23	269.49	7,986.92	903.89	-14,166.99	14,194.50	0.78	0.31	-0.72
20,251.00	88.25	267.96	7,989.01	901.78	-14,261.94	14,289.22	1.91	-1.03	-1.61
20,346.00	88.83	271.79	7,991.44	901.57	-14,356.89	14,384.04	4.08	0.61	4.03
20,440.00	88.92	272.63	7,993.28	905.20	-14,450.80	14,478.02	0.90	0.10	0.89
20,535.00	90.71	271.30	7,993.59	908.45	-14,545.74	14,573.00	2.35	1.88	-1.40
20,629.00	90.12	271.39	7,992.91	910.66	-14,639.71	14,666.96	0.63	-0.63	0.10
20,724.00	88.88	269.76	7,993.74	911.61	-14,734.69	14,761.88	2.16	-1.31	-1.72
20,819.00	87.79	269.23	7,996.50	910.78	-14,829.65	14,856.67	1.28	-1.15	-0.56

# Civitas Resources

## Survey Report

<b>Company:</b>	CRESTONE PEAK RESOURCES	<b>Local Co-ordinate Reference:</b>	Well BIJOU 3-65 20-19-24 2AH
<b>Project:</b>	ADAMS COUNTY	<b>TVD Reference:</b>	KB 25' @ 5618.00usft
<b>Site:</b>	SEC 21-T3S-R65W	<b>MD Reference:</b>	KB 25' @ 5618.00usft
<b>Well:</b>	BIJOU 3-65 20-19-24 2AH	<b>North Reference:</b>	True
<b>Wellbore:</b>	OWB	<b>Survey Calculation Method:</b>	Minimum Curvature
<b>Design:</b>	FINAL SURVEY	<b>Database:</b>	EDM

Survey										
Measured Depth (usft)	Inclination (°)	Azimuth (°)	Vertical Depth (usft)	+N/-S (usft)	+E/-W (usft)	Vertical Section (usft)	Dogleg Rate (°/100ft)	Build Rate (°/100ft)	Turn Rate (°/100ft)	
20,914.00	90.92	269.95	7,997.57	910.10	-14,924.63	14,951.50	3.38	3.29	0.76	
21,008.00	90.67	269.73	7,996.26	909.84	-15,018.62	15,045.36	0.35	-0.27	-0.23	
21,103.00	91.87	270.72	7,994.16	910.21	-15,113.59	15,140.23	1.64	1.26	1.04	
21,198.00	92.46	269.79	7,990.57	910.63	-15,208.52	15,235.06	1.16	0.62	-0.98	
21,292.00	91.04	269.85	7,987.70	910.34	-15,302.47	15,328.88	1.51	-1.51	0.06	
21,387.00	91.38	269.08	7,985.69	909.45	-15,397.45	15,423.69	0.89	0.36	-0.81	
21,481.00	90.00	268.88	7,984.56	907.78	-15,491.42	15,517.46	1.48	-1.47	-0.21	
21,576.00	90.65	267.82	7,984.02	905.04	-15,586.38	15,612.16	1.31	0.68	-1.12	
21,671.00	89.36	269.52	7,984.01	902.84	-15,681.35	15,706.90	2.25	-1.36	1.79	
21,766.00	90.18	270.42	7,984.39	902.79	-15,776.35	15,801.78	1.28	0.86	0.95	
21,861.00	90.28	269.73	7,984.01	902.91	-15,871.35	15,896.66	0.73	0.11	-0.73	
21,956.00	90.72	270.20	7,983.18	902.85	-15,966.34	15,991.53	0.68	0.46	0.49	
22,051.00	89.50	268.94	7,983.00	902.14	-16,061.33	16,086.37	1.85	-1.28	-1.33	
22,145.00	89.49	269.69	7,983.83	901.02	-16,155.32	16,180.19	0.80	-0.01	0.80	
22,240.00	90.07	269.24	7,984.19	900.13	-16,250.32	16,275.02	0.77	0.61	-0.47	
22,334.00	90.49	268.20	7,983.73	898.03	-16,344.29	16,368.77	1.19	0.45	-1.11	
22,429.00	88.77	269.95	7,984.35	896.49	-16,439.27	16,463.55	2.58	-1.81	1.84	
22,523.00	87.94	268.92	7,987.05	895.57	-16,533.23	16,557.34	1.41	-0.88	-1.10	
22,617.00	87.52	271.02	7,990.77	895.52	-16,627.15	16,651.14	2.28	-0.45	2.23	
22,712.00	87.48	270.83	7,994.91	897.05	-16,722.04	16,745.99	0.20	-0.04	-0.20	
22,806.00	88.41	271.07	7,998.28	898.61	-16,815.97	16,839.88	1.02	0.99	0.26	
22,901.00	88.15	270.33	8,001.14	899.77	-16,910.92	16,934.76	0.83	-0.27	-0.78	
22,996.00	90.32	270.16	8,002.40	900.18	-17,005.90	17,029.65	2.29	2.28	-0.18	
23,090.00	91.00	269.79	8,001.32	900.13	-17,099.90	17,123.52	0.82	0.72	-0.39	
23,185.00	91.69	269.45	7,999.09	899.50	-17,194.87	17,218.34	0.81	0.73	-0.36	
23,279.00	89.96	269.65	7,997.74	898.77	-17,288.85	17,312.17	1.85	-1.84	0.21	
23,373.00	90.29	269.88	7,997.53	898.38	-17,382.85	17,406.03	0.43	0.35	0.24	
23,468.00	90.94	269.60	7,996.51	897.95	-17,477.84	17,500.88	0.74	0.68	-0.29	
23,563.00	90.73	270.04	7,995.13	897.65	-17,572.83	17,595.74	0.51	-0.22	0.46	
23,752.00	89.78	270.56	7,994.29	898.64	-17,761.82	17,784.54	0.57	-0.50	0.28	
23,819.00	90.30	270.10	7,994.24	899.03	-17,828.82	17,851.48	1.04	0.78	-0.69	
LAST SURVEY - 23819' MD, 7994' TVD										
23,880.00	90.30	270.10	7,993.92	899.13	-17,889.82	17,912.40	0.00	0.00	0.00	
PTB - 23880' MD, 7994' TVD, 1696' FNL, 344' FWL SEC 24										

# Civitas Resources

## Survey Report

<b>Company:</b>	CRESTONE PEAK RESOURCES	<b>Local Co-ordinate Reference:</b>	Well BIJOU 3-65 20-19-24 2AH
<b>Project:</b>	ADAMS COUNTY	<b>TVD Reference:</b>	KB 25' @ 5618.00usft
<b>Site:</b>	SEC 21-T3S-R65W	<b>MD Reference:</b>	KB 25' @ 5618.00usft
<b>Well:</b>	BIJOU 3-65 20-19-24 2AH	<b>North Reference:</b>	True
<b>Wellbore:</b>	OWB	<b>Survey Calculation Method:</b>	Minimum Curvature
<b>Design:</b>	FINAL SURVEY	<b>Database:</b>	EDM

### Design Targets

Target Name - hit/miss target - Shape	Dip Angle (°)	Dip Dir. (°)	TVD (usft)	+N/-S (usft)	+E/-W (usft)	Northing (usft)	Easting (usft)	Latitude	Longitude
LP-BIJOU 3-65 20-19-24 - actual wellpath misses target center by 16.31usft at 8534.70usft MD (7884.48 TVD, 871.43 N, -2550.48 E) - Point	0.00	0.00	7,900.00	876.21	-2,548.97	1,163,435.87	3,230,819.60	39.779066°N	104.678745°W
PBHL-BIJOU 3-65 20-19-24 - actual wellpath misses target center by 24.20usft at 23880.00usft MD (7993.92 TVD, 899.13 N, -17889.82 E) - Point	0.00	0.00	8,005.00	915.30	-17,904.02	1,163,331.18	3,215,465.00	39.779156°N	104.733377°W

### Design Annotations

Measured Depth (usft)	Vertical Depth (usft)	Local Coordinates		Comment
		+N/-S (usft)	+E/-W (usft)	
3,450.00	3,325.28	318.31	-780.36	SURFACE CSG - 3450' MD, 3325' TVD
7,780.00	7,451.80	820.01	-1,988.49	KOP - 7780' MD, 7452' TVD
8,533.18	7,884.31	871.38	-2,548.97	~150' X-OVER PNT - 8533.18' MD, 7884' TVD, 1685' FNL, 150' FEL SEC 20
8,574.00	7,887.89	872.64	-2,589.61	HZ LANDING PNT - 8574' MD, 7888' TVD
23,819.00	7,994.24	899.03	-17,828.82	LAST SURVEY - 23819' MD, 7994' TVD
23,880.00	7,993.92	899.13	-17,889.82	PTB - 23880' MD, 7994' TVD, 1696' FNL, 344' FWL SEC 24

Checked By: \_\_\_\_\_ Approved By: \_\_\_\_\_ Date: \_\_\_\_\_