

Inspection Photos

Location: TEP ROCKY MOUNTAIN LLC CHEVRON/TR 44-35-597 PAD

Location ID: 324298

Date: 01/6/2025



Jan 6, 2025 at 3:53:40 PM
+39.565144,-108.238549 ±5.06m
De Beque



Jan 6, 2025 at 4:18:35 PM
+39.565267,-108.238661 ±3.58m
De Beque

Photo # 2122 Entrance to location

Photo # 2160 Location

Inspection Photos

Location: TEP ROCKY MOUNTAIN LLC CHEVRON/TR 44-35-597 PAD

Location ID: 324298

Date: 01/6/2025



Photo # 2123 Location



Photo # 2128 Location

Inspection Photos

Location: TEP ROCKY MOUNTAIN LLC CHEVRON/TR 44-35-597 PAD

Location ID: 324298

Date: 01/6/2025



Jan 6, 2025 at 4:04:32 PM
+39.564954,-108.239195 ±4.64m
De Beque

Photo # 2134 Location



Jan 6, 2025 at 4:11:44 PM
+39.564852,-108.239254 ±5.44m
De Beque

Photo # 2147 Location

Inspection Photos

Location: TEP ROCKY MOUNTAIN LLC CHEVRON/TR 44-35-597 PAD

Location ID: 324298

Date: 01/6/2025



Photo # 2148 Location



Photo # 2157 Location



Inspection Photos

Location: TEP ROCKY MOUNTAIN LLC CHEVRON/TR 44-35-597 PAD

Location ID: 324298

Date: 01/6/2025



Photo # 2181 NW corner of location

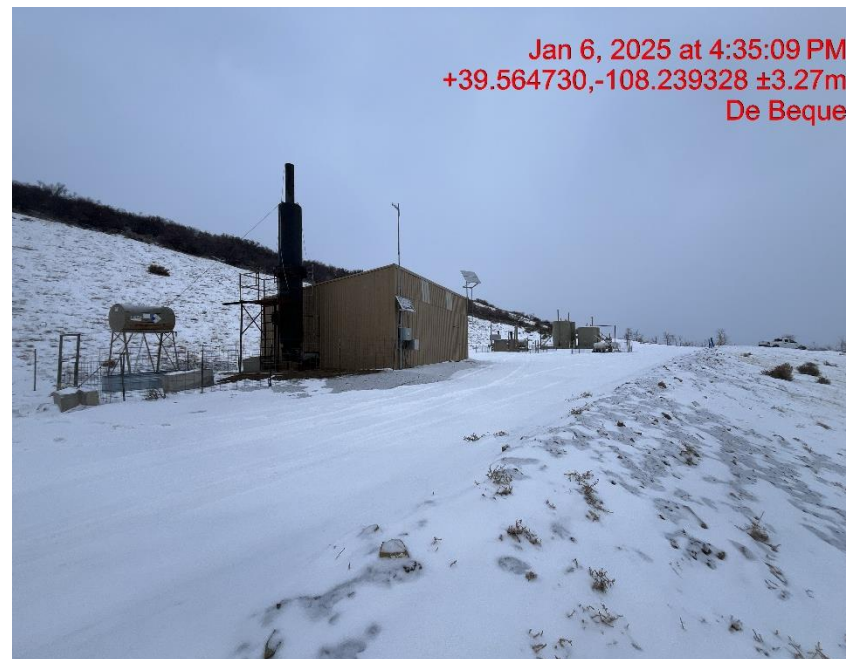


Photo # 2182 SW corner of location

Inspection Photos

Location: TEP ROCKY MOUNTAIN LLC CHEVRON/TR 44-35-597 PAD

Location ID: 324298

Date: 01/6/2025



Photo # 2186 NE corner of location



Photo # 2187 SE corner of location

Inspection Photos

Location: TEP ROCKY MOUNTAIN LLC CHEVRON/TR 44-35-597 PAD

Location ID: 324298

Date: 01/6/2025

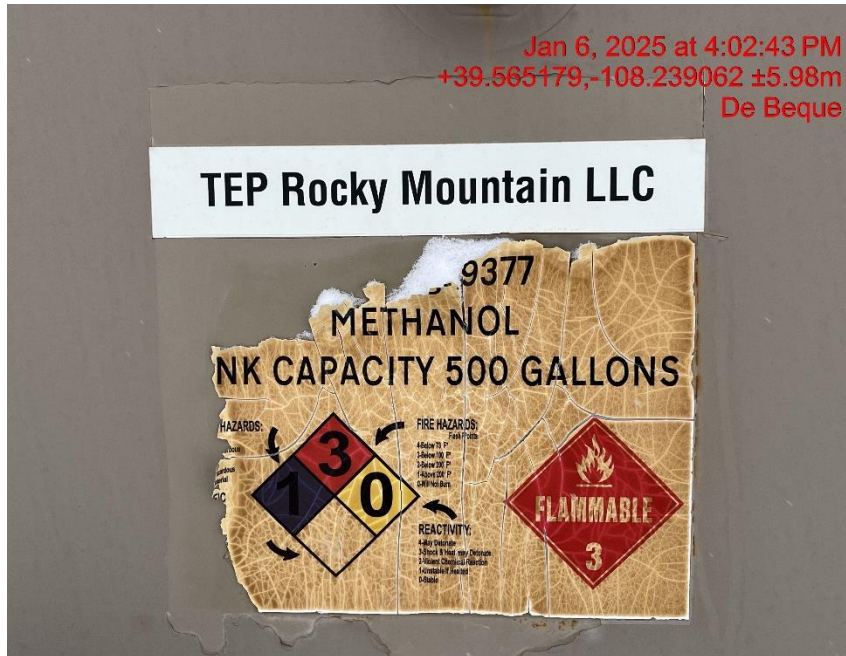


Photo # 2132 Lacks required information



Photo # 2143 Lacks contents



Inspection Photos

Location: TEP ROCKY MOUNTAIN LLC CHEVRON/TR 44-35-597 PAD

Location ID: 324298

Date: 01/6/2025



Photo # 2170 Open ended load line



Photo # 2171 Open ended load line

Inspection Photos

Location: TEP ROCKY MOUNTAIN LLC CHEVRON/TR 44-35-597 PAD

Location ID: 324298

Date: 01/6/2025



Photo # 2173 Open ended load line



Photo # 2174 Open ended load line

Inspection Photos

Location: TEP ROCKY MOUNTAIN LLC CHEVRON/TR 44-35-597 PAD

Location ID: 324298

Date: 01/6/2025



Photo # 2175 Open ended load line



Photo # 2177 Open ended load line

Inspection Photos

Location: TEP ROCKY MOUNTAIN LLC CHEVRON/TR 44-35-597 PAD

Location ID: 324298

Date: 01/6/2025

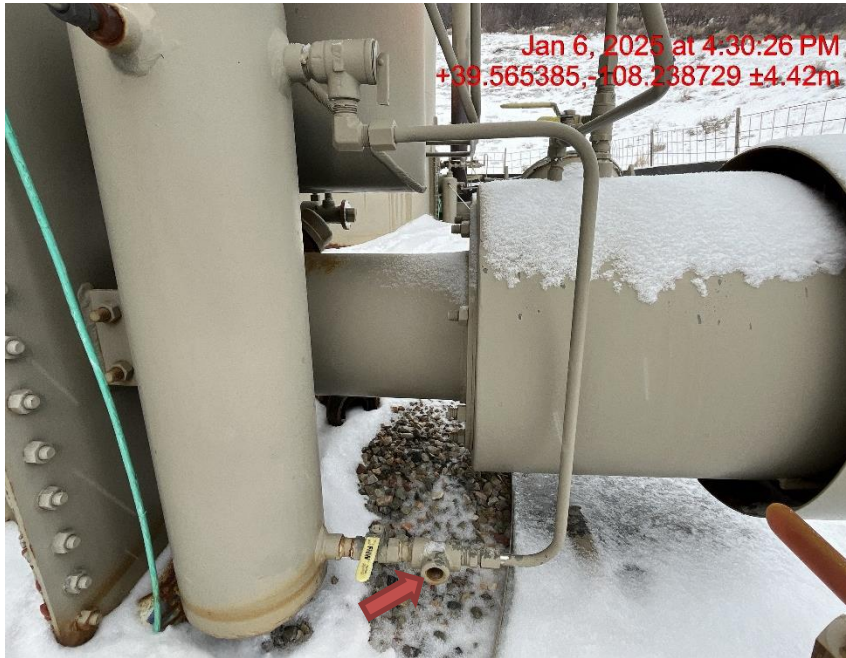


Photo # 2178 PRV vent line does not comply with CECMC pressure safety device rules



Photo # 2179 PRV vent line does not comply with CECMC pressure safety device rules

Inspection Photos

Location: TEP ROCKY MOUNTAIN LLC CHEVRON/TR 44-35-597 PAD

Location ID: 324298

Date: 01/6/2025

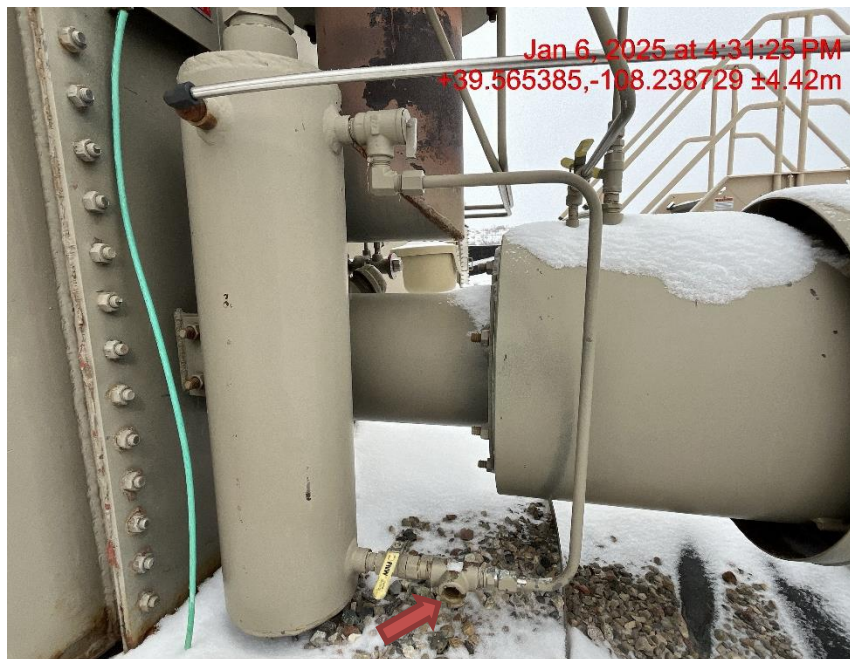


Photo # 2180 PRV vent line does not comply with CECMC pressure safety device rules



Photo # 2183 Debris

Inspection Photos

Location: TEP ROCKY MOUNTAIN LLC CHEVRON/TR 44-35-597 PAD

Location ID: 324298

Date: 01/6/2025



Photo # 2185 Debris



Photo # 2189 Unmarked Deadman