

Wellhead Closure Checklist

COGCC Rule 911.a.(4) Environmental Site Closure Assessment Field Form

Additional attachments (optional):		Pit Closure		Tank Battery Closure		Flowline Closure 5-24-22	Partially Buried Vault Closure
Site Name & COGCC Facility Number: Becca #D 3-11		Date: 4-15-22					Remediation Project #: 22098
Associated Wells: 05-123-17286		Age of Site: years					Number of Photos Attached: 1
Location: (GPS coordinates of wellhead or southeastern most wellhead for multiple)						Estimated Facility Size (acres):	
General Condition of Site: (General observations regarding housekeeping, corrosion, waste management, etc.)						40.252420 / -104.539510	
USCS Soil Type: SC						Estimated Depth to Groundwater: ~10-12'	
Hydrocarbon Impacted Soils / Spills: (Note estimated size and if impact appears to be surficial or extends to an unknown depth)							
None observed							
Salt Crusted Soils or Impacted Vegetation: (Note estimated size and if impact appears to be surficial or extends to an unknown depth)							
None observed							
Wellhead(s)							
Well API	05-123-17286						
Age	years						
Condition of surface around wellhead	Good- Per Crew						
PID Readings	N/A-Excavated upon arrival						
Condition of subsurface containing present PID Readings	Good- no staining/no odor						
	8.3	2.8	0.3	1.3	13.2		
Sample taken? Location/Sample ID#	WH-SS-01eG'	WH-SS-02eG'	WH-SS-03eG'	WH-SS-04eG'	WH-FS-01e7'		
Photo Number(s)	See photolog						
Other observations regarding wellheads:							
Well casing cut/capped following assessment							
Summary							
Was impacted soil identified?							
(No)		Yes - less than 10 cubic yards		Yes - more than 10 cubic yards			
Total number of samples field screened: 5				Total number of samples collected: 5			
Highest PID Reading: 13.2				Total number of samples submitted to lab for analysis: 1			
If more than 10 cubic yards of impacted soil were observed:							
Vertical extent:				Estimated spill volume:			
Lateral extent:				Volume of soil removed:			
Is additional investigation required?							
Was groundwater encountered during the investigation?							
(No)		Yes - not impacted or in contact with impacted soils		Yes - groundwater impacted and/or in contact with impacted soils			
Measured depth to groundwater:				Was remedial groundwater removal conducted? Yes No			
Date Groundwater was encountered:				Commencement date of removal:			
Sheen on groundwater? Yes No				Volume of groundwater removed prior to sampling:			
Free product observed? Yes No				Volume of groundwater removed post sampling:			
Total number of samples collected:				Total Volume of groundwater removed:			
Total number of samples submitted to lab for analysis:							

Flowline Closure Checklist

COGCC Rule 911.a.(4) Environmental Site Closure Assessment Field Form

Additional Attachments:	Tank Battery Closure	Wellhead Closure 4-15-22	Pit Closure	Partially Buried Vault Closure
Site Name & COGCC Facility Number: Becca #D 3-11		Date: 5-24-22		Remediation Project #: 22098
Associated Wells: 05-123-17286		Age of Site: Years		Number of Photos Attached: 11
Starting point: (GPS coordinates and descriptions) At well: 40.252420 / -104.539510				
End point: (GPS coordinates and descriptions) At sep: 40.248877 / -104.540565				
USCS Soil Type: SC			Estimated Depth to Groundwater: ~10-12'	
Hydrocarbon Impacted Soils / Spills: (Note estimated size and if impact appears to be surficial or extends to an unknown depth) None observed				
Salt Crusted Soils or Impacted Vegetation: (Note estimated size and if impact appears to be surficial or extends to an unknown depth) None observed				
Flowlines				
Flowline type	D, G, W			
Depth	~3'			
Age	Years			
Length	~1415			
Construction Material	Steel			
Were flowlines pulled?	Yes - a portion was abandoned in place			
Visual Integrity of lines	Good			
Visual impacts if trenched	None observed			
PID Readings if trenched	2.5	0.1 to 1.6		
Sample taken? Location/Sample ID#	FL-SS-01 @ 4'	10 additional bellholes/cut points field screened - see PID table + aerial figure		
Photo Number(s)	See photolog			
Other observations regarding on location flowlines: Flowline terminus / Pl. B at separator assessed + lab analyzed. 10 additional bellholes/cut points assessed				
Summary				
Was impacted soil identified? (No) Yes - less than 10 cubic yards Yes - more than 10 cubic yards				
Total number of samples field screened: 11			Total number of samples collected: 11	
Highest PID Reading: 1.5			Total number of samples submitted to lab for analysis: 1	
If more than 10 cubic yards of impacted soil were observed:				
Vertical extent:		Estimated spill volume:		
Lateral extent:		Volume of soil removed:		
Is additional investigation required? N/A				
Was groundwater encountered during the investigation? (No) Yes - not impacted or in contact with impacted soils Yes - groundwater impacted and/or in contact with impacted soils				
Measured depth to groundwater:			Was remedial groundwater removal conducted? Yes No	
Date Groundwater was encountered:			Commencement date of removal:	
Sheen on groundwater? Yes No			Volume of groundwater removed prior to sampling:	
Free product observed? Yes No			Volume of groundwater removed post sampling:	
Total number of samples collected:			Total Volume of groundwater removed:	
Total number of samples submitted to lab for analysis:				



FIGURES

Figure 1: Topographic Site Location Map

Figure 2: Aerial Site Location Map

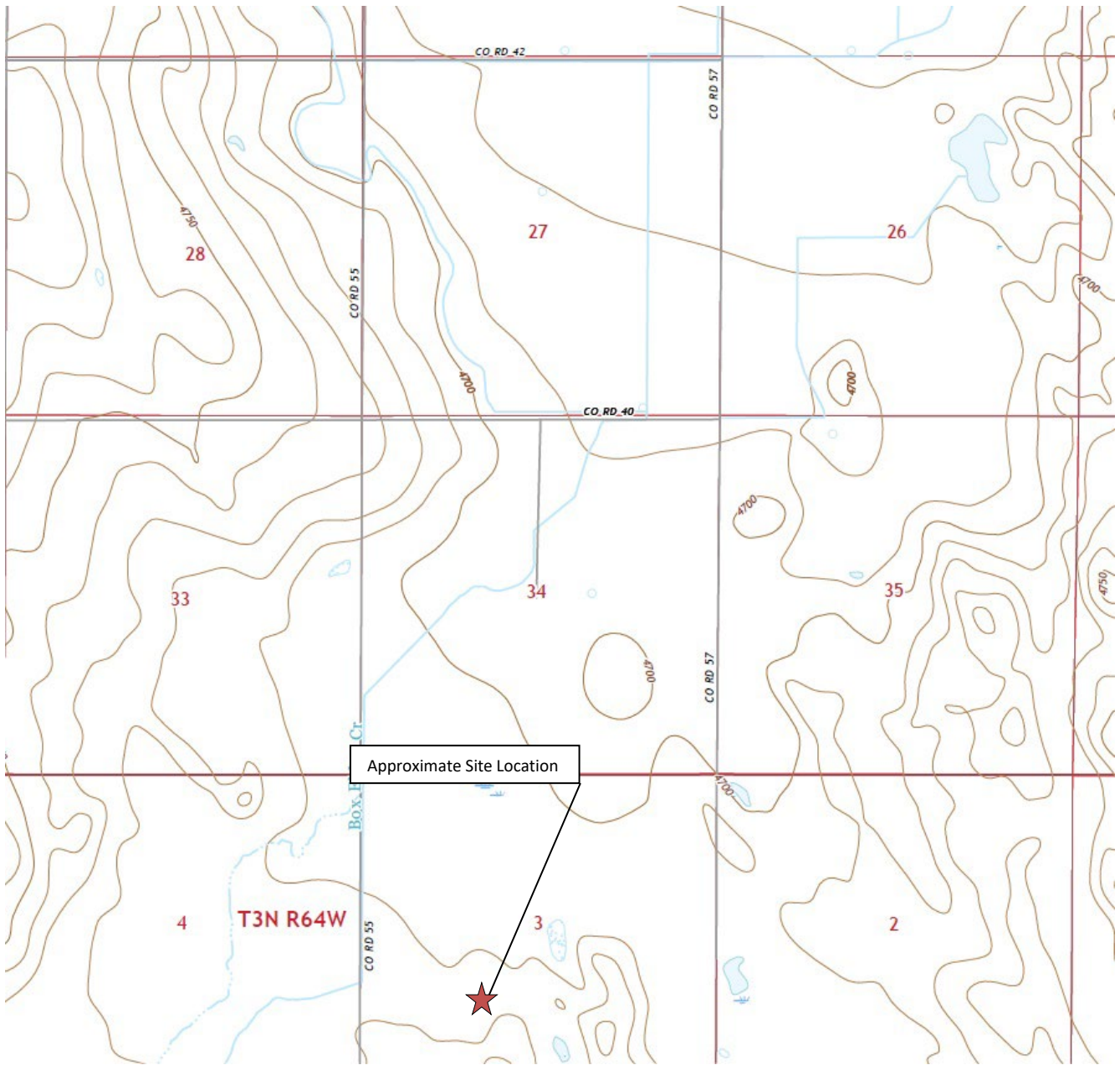
Figure 3A: Soil Analytical Map

Figure 3B: Soil Analytical Map (Flowline Pt. B)

Figure 4A: Polycyclic Aromatic Hydrocarbons Map

Figure 4B: Polycyclic Aromatic Hydrocarbons Map (Flowline Pt. B)

Figure 5: Metals in Soil Map



Topographic Site Location Map

Becca #D 3-11
 Closure Assessment
 40.252420 / -104.539510
 NE¼ SW ¼ SEC.3 T3N R64W 6PM
 Weld County, Colorado
 API # 05-123-17286
 Remediation # 22098



EAGLE
 ENVIRONMENTAL
 CONSULTING, INC.

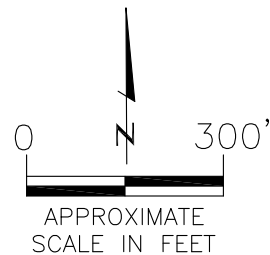
Source: USGS 7.5 Minute Topographic
 Valley View School, CO Quadrangle 2022

Figure 1



LEGEND

- FORMER BECCA #D 3-11 WELLHEAD (PLUGGED AND ABANDONED)
- ASSOCIATED SEPARATOR
- APPROXIMATE FLOWLINE LOCATION (REMOVED)
- APPROXIMATE FLOWLINE LOCATION (ABANDONED IN PLACE)
- APPROXIMATE BELLHOLE/CUT POINTS FOR REMOVAL – LAB ANALYZED
- APPROXIMATE BELLHOLE/CUT POINTS FOR REMOVAL – FIELD SCREENED



AERIAL SITE LOCATION MAP

BECCA #D 3-11
CLOSURE ASSESSMENT
40.252420 / -104.539510
NE¼ SW¼ SEC.3 T3N R64W 6PM
WELD COUNTY, COLORADO
API # 05-123-17286
REMEDATION # 22098

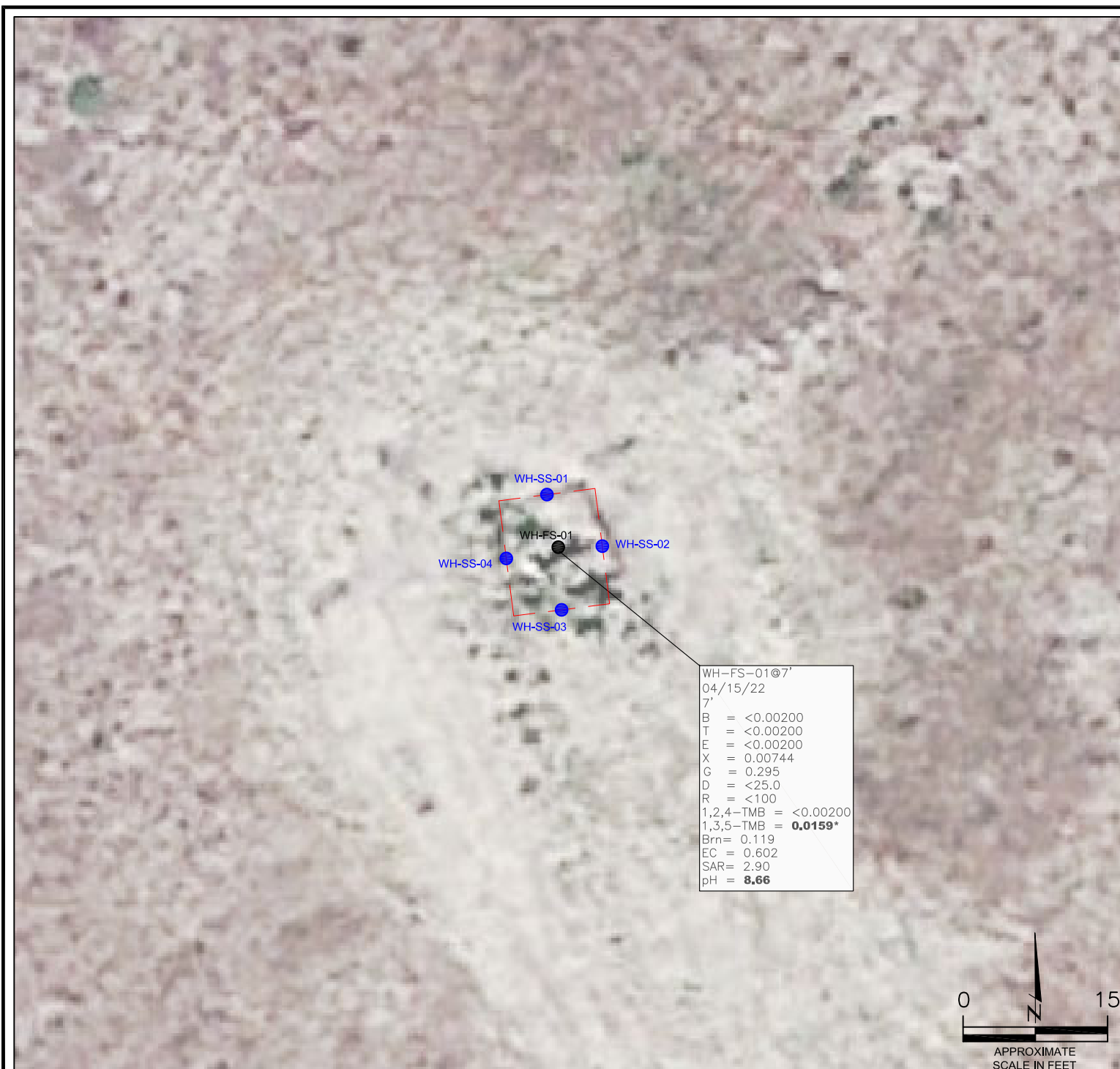
DATE: 08/30/22

FIG. NO.
2

DRAWN BY:
AMN



EAGLE
ENVIRONMENTAL
CONSULTING, INC.
8000 W 44th Ave, Wheat Ridge, CO 80033
Ph: 303-433-0479 • F: 303-325-5449



WH-FS-01@7'
04/15/22
7'
B = <0.00200
T = <0.00200
E = <0.00200
X = 0.00744
G = 0.295
D = <25.0
R = <100
1,2,4-TMB = <0.00200
1,3,5-TMB = **0.0159***
Brn= 0.119
EC = 0.602
SAR= 2.90
pH = **8.66**

LEGEND

- INITIAL ASSESSMENT BOUNDARIES
- SS-02 APPROXIMATE LOCATION OF SOIL SAMPLES FIELD SCREENED, ONLY, WITH PHOTOIONIZATION DETECTOR
- APPROXIMATE LOCATION OF SOIL SAMPLES SUBMITTED FOR LABORATORY ANALYSIS

PARAMETERS

SAMPLE LOCATION
DATE
DEPTH (FEET)
B = BENZENE (mg/kg)
T = TOLUENE (mg/kg)
E = ETHYLBENZENE (mg/kg)
X = TOTAL XYLENES (mg/kg)
G = TPH-GRO (mg/kg)
D = TPH-DRO (mg/kg)
R = TPH-RRO (mg/kg)
1,2,4-TMB = 1,2,4 TRIMETHYLBENZENE (mg/kg)
1,3,5-TMB = 1,3,5 TRIMETHYLBENZENE (mg/kg)
Brn= BORON (mg/L)
EC = SPECIFIC CONDUCTANCE (mmhos/cm)
SAR= SODIUM ADSORPTION RATIO
pH = pH (pH UNITS)

mg/kg = MILLIGRAMS PER KILOGRAM
mg/L = MILLIGRAMS PER LITER
mmhos/cm = MILLIMHOS PER CENTIMETER

TPH-GRO = TOTAL PETROLEUM HYDROCARBONS - GASOLINE RANGE ORGANICS
TPH-DRO = TOTAL PETROLEUM HYDROCARBONS - DIESEL RANGE ORGANICS
TPH-RRO = TOTAL PETROLEUM HYDROCARBONS - RESIDUAL RANGE ORGANICS

NOTES:
VALUES PRESENTED WITH A LESS THAN SYMBOL (<) DID NOT CONTAIN CONCENTRATIONS AT OR ABOVE LABORATORY DETECTION LIMITS

VALUES PRESENTED IN **BOLD** VALUES CONTAIN CONCENTRATIONS THAT EXCEED COGCC TABLE 915-1 REGULATORY LIMITS FOR THAT COMPOUND.

VALUES PRESENTED WITH ASTERISK (*) EXCEED COGCC TABLE 915-1 PROTECTION OF GROUNDWATER SOIL SCREENING LEVELS FOR THAT COMPOUND.

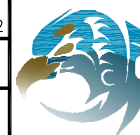
COGCC = COLORADO OIL AND GAS CONSERVATION COMMISSION

SOIL ANALYTICAL MAP
BECCA #D 3-11
CLOSURE ASSESSMENT
40.252420 / -104.539510
NE 1/4 SW 1/4 SEC. 3 T3N R64W 6PM
WELD COUNTY, COLORADO
API # 05-123-17286
REMEDIAL # 22098

DATE:
05/06/22

DRAWN BY:
AMN

FIG.
NO. 3A



EAGLE
ENVIRONMENTAL
CONSULTING, INC.
8000 W 44th Ave, Wheat Ridge, CO 80033
Ph: 303-433-0479 • F: 303-325-5449

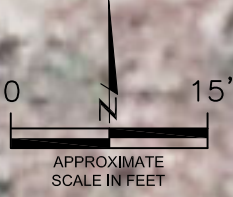


BACKGROUND-02@1'
05/24/22
1'
B = NA
T = NA
E = NA
X = NA
G = NA
D = NA
R = NA
1,2,4-TMB = NA
1,3,5-TMB = NA
Brn= <0.100
EC = NA
SAR= NA
pH = 7.50

BACKGROUND-02

FL-SS-01

FL-SS-01@4'
05/24/22
4'
B = <0.00200
T = <0.00200
E = <0.00200
X = <0.00200
G = <0.200
D = <25.0
R = <100
1,2,4-TMB = <0.00200
1,3,5-TMB = <0.00200
Brn= **3.95**
EC = 0.154
SAR= 0.221
pH = **8.43**



LEGEND

● APPROXIMATE LOCATION OF SOIL SAMPLES
SUBMITTED FOR LABORATORY ANALYSIS

PARAMETERS

SAMPLE LOCATION
DATE
DEPTH (FEET)
B = BENZENE (mg/kg)
T = TOLUENE (mg/kg)
E = ETHYLBENZENE (mg/kg)
X = TOTAL XYLENES (mg/kg)
G = TPH-GRO (mg/kg)
D = TPH-DRO (mg/kg)
R = TPH-RRO (mg/kg)
1,2,4-TMB = 1,2,4 TRIMETHYLBENZENE (mg/kg)
1,3,5-TMB = 1,3,5 TRIMETHYLBENZENE (mg/kg)
Brn= BORON (mg/L)
EC = SPECIFIC CONDUCTANCE (mmhos/cm)
SAR= SODIUM ADSORPTION RATIO
pH = pH (pH UNITS)

mg/kg = MILLIGRAMS PER KILOGRAM
mg/L = MILLIGRAMS PER LITER
mmhos/cm = MILLIMHOS PER CENTIMETER

NA = NOT ANALYZED

TPH-GRO = TOTAL PETROLEUM HYDROCARBONS - GASOLINE
RANGE ORGANICS
TPH-DRO = TOTAL PETROLEUM HYDROCARBONS - DIESEL
RANGE ORGANICS
TPH-RRO = TOTAL PETROLEUM HYDROCARBONS - RESIDUAL
RANGE ORGANICS

NOTES:
VALUES PRESENTED WITH A LESS THAN SYMBOL (<) DID NOT
CONTAIN CONCENTRATIONS AT OR ABOVE LABORATORY
DETECTION LIMITS

VALUES PRESENTED IN **BOLD** VALUES CONTAIN
CONCENTRATIONS THAT EXCEED COGCC TABLE 915-1
REGULATORY LIMITS FOR THAT COMPOUND.

COGCC = COLORADO OIL AND GAS CONSERVATION
COMMISSION

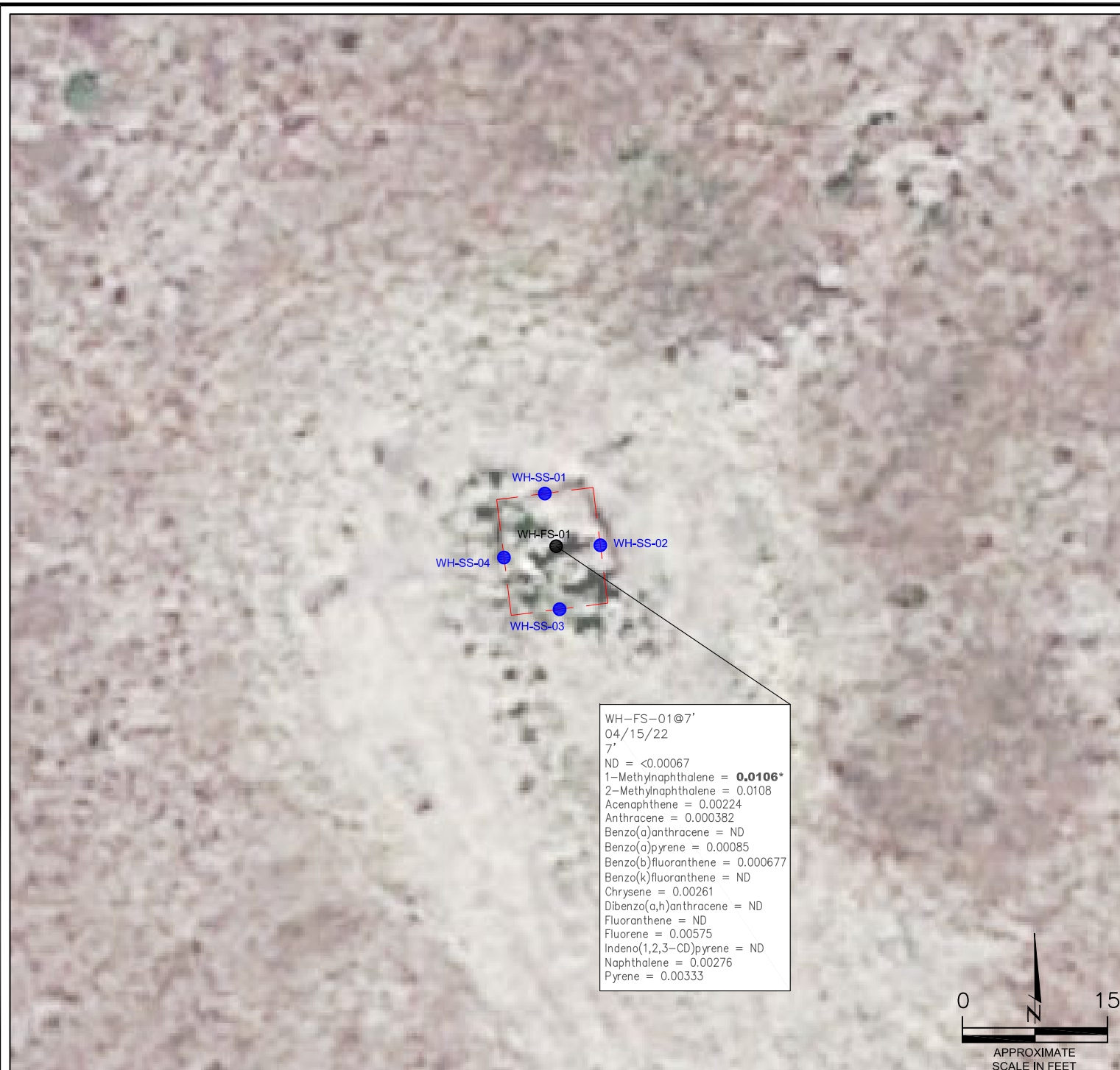
SOIL ANALYTICAL MAP
(FLOWLINE P.T. B)

BECCA #D 3-11
CLOSURE ASSESSMENT
40.252420 / -104.539510
NE¼ SW¼ SEC.3 T3N R64W 6PM
WELD COUNTY, COLORADO
API # 05-123-17286
REMEDIAL # 22098

DATE:
08/30/22
DRAWN BY:
KM
FIG.
NO. 3B



EAGLE
ENVIRONMENTAL
CONSULTING, INC.
8000 W 44th Ave, Wheat Ridge, CO 80033
Ph: 303-433-0479 • F: 303-325-5449



LEGEND

- INITIAL ASSESSMENT BOUNDARIES
- SS-02 APPROXIMATE LOCATION OF SOIL SAMPLES FIELD SCREENED, ONLY, WITH PHOTOIONIZATION DETECTOR
- SS-02 APPROXIMATE LOCATION OF SOIL SAMPLES SUBMITTED FOR LABORATORY ANALYSIS

PARAMETERS

SAMPLE LOCATION
DATE SAMPLE COLLECTED
APPROXIMATE DEPTH

POLYCYCLIC AROMATIC HYDROCARBONS (PAHs)

NOTE:
CONCENTRATIONS PRESENTED IN mg/kg

mg/kg = MILLIGRAMS PER KILOGRAM

ND = NON-DETECT

NOTE:
VALUES PRESENTED WITH A LESS THAN SYMBOL (<) DID NOT CONTAIN CONCENTRATIONS AT OR ABOVE LABORATORY DETECTION LIMITS

VALUES PRESENTED IN **BOLD** VALUES CONTAIN CONCENTRATIONS EXCEEDING COGCC TABLE 915-1 REGULATORY LIMITS.

VALUES PRESENTED WITH AN ASTERISK (*) EXCEED COGCC TABLE 915-1 GROUNDWATER SOIL SCREENING LEVELS FOR THAT COMPOUND

COGCC = COLORADO OIL AND GAS CONSERVATION COMMISSION

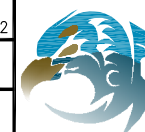
POLYCYCLIC AROMATIC HYDROCARBONS MAP

BECCA #D 3-11
CLOSURE ASSESSMENT
40.252420 / -104.539510
NE¼ SW¼ SEC.3 T3N R64W 6PM
WELD COUNTY, COLORADO
API # 05-123-17286
REMEDATION # 22098

DATE:
08/30/22

DRAWN BY:
AMN

FIG.
NO. 4A



EAGLE
ENVIRONMENTAL
CONSULTING, INC.
8000 W 44th Ave, Wheat Ridge, CO 80033
Ph: 303-433-0479 • F: 303-325-5449



LEGEND

● APPROXIMATE LOCATION OF SOIL SAMPLES
 SS-02 SUBMITTED FOR LABORATORY ANALYSIS

PARAMETERS

SAMPLE LOCATION
 DATE SAMPLE COLLECTED
 APPROXIMATE DEPTH

POLYCYCLIC AROMATIC HYDROCARBONS (PAHs)

NOTE:
 CONCENTRATIONS PRESENTED IN mg/kg

mg/kg = MILLIGRAMS PER KILOGRAM

ND = NON-DETECT

NOTE:
 VALUES PRESENTED WITH A LESS THAN SYMBOL (<) DID NOT
 CONTAIN CONCENTRATIONS AT OR ABOVE LABORATORY
 DETECTION LIMITS

VALUES PRESENTED IN **BOLD** VALUES CONTAIN
 CONCENTRATIONS EXCEEDING COGCC TABLE 915-1
 REGULATORY LIMITS.

COGCC = COLORADO OIL AND GAS CONSERVATION COMMISSION

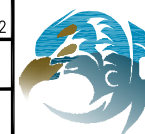
POLYCYCLIC AROMATIC HYDROCARBONS MAP

(FLOWLINE PT. B)
 BECCA #D 3-11
 CLOSURE ASSESSMENT
 40.252420 / -104.539510
 NE¼ SW¼ SEC.3 T3N R64W 6PM
 WELD COUNTY, COLORADO
 API # 05-123-17286
 REMEDIATION # 22098

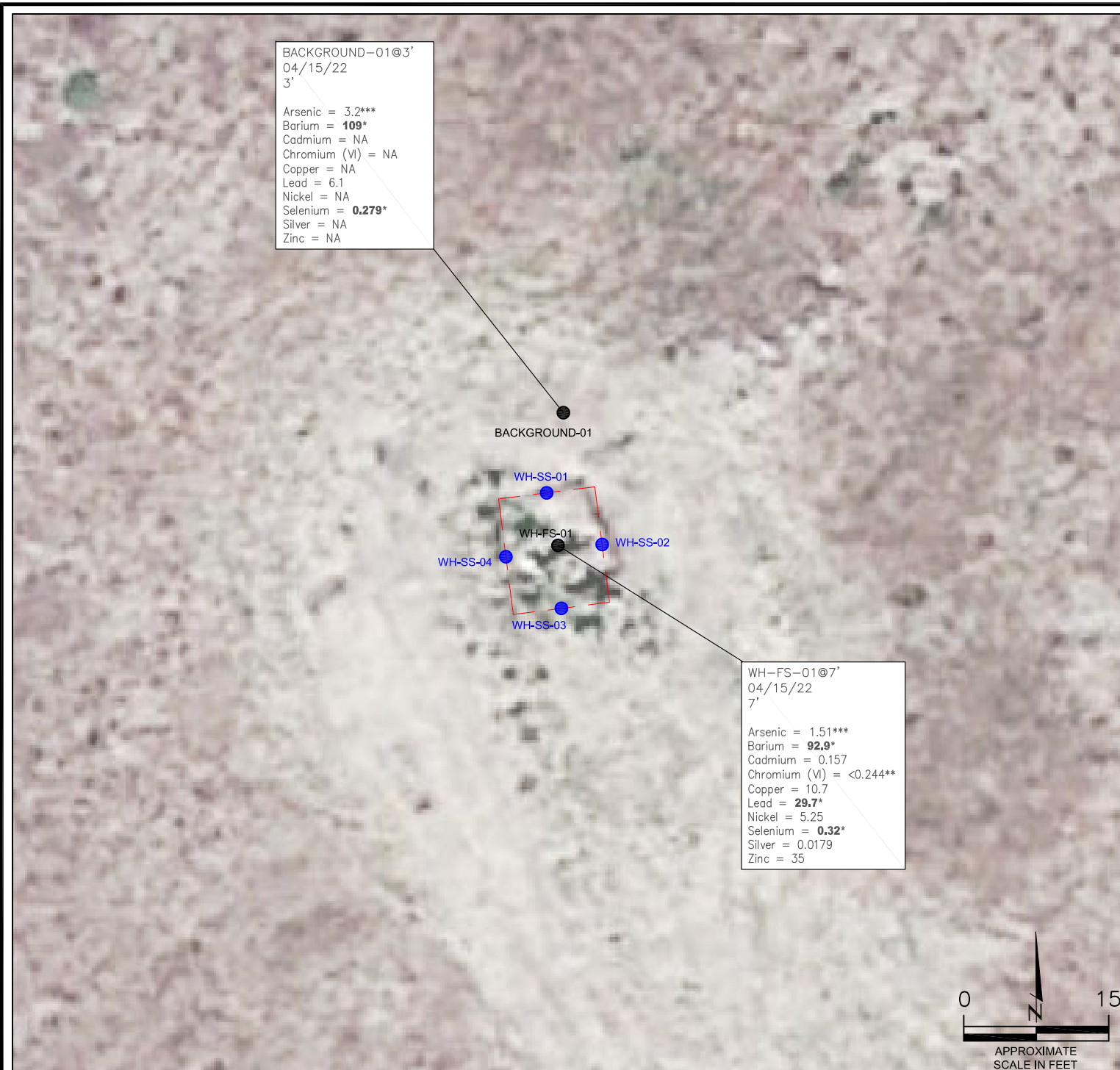
DATE:
 08/30/22

DRAWN BY:
 KM

FIG.
 NO. 4B



EAGLE
 ENVIRONMENTAL
 CONSULTING, INC.
 8000 W 44th Ave, Wheat Ridge, CO 80033
 Ph: 303-433-0479 • F: 303-325-5449



BACKGROUND-01@3'
04/15/22
3'

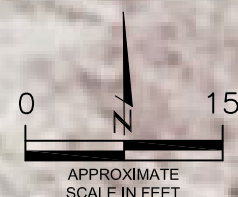
Arsenic = 3.2***
Barium = **109***
Cadmium = NA
Chromium (VI) = NA
Copper = NA
Lead = 6.1
Nickel = NA
Selenium = **0.279***
Silver = NA
Zinc = NA

BACKGROUND-01

WH-SS-01
WH-SS-02
WH-SS-03
WH-SS-04
WH-FS-01

WH-FS-01@7'
04/15/22
7'

Arsenic = 1.51***
Barium = **92.9***
Cadmium = 0.157
Chromium (VI) = <0.244**
Copper = 10.7
Lead = **29.7***
Nickel = 5.25
Selenium = **0.32***
Silver = 0.0179
Zinc = 35



LEGEND

- INITIAL ASSESSMENT BOUNDARIES
- SS-02 APPROXIMATE LOCATION OF SOIL SAMPLES FIELD SCREENED, ONLY, WITH PHOTOIONIZATION DETECTOR
- SS-02 APPROXIMATE LOCATION OF SOIL SAMPLES SUBMITTED FOR LABORATORY ANALYSIS

PARAMETERS

SAMPLE LOCATION
DATE SAMPLE COLLECTED
APPROXIMATE DEPTH
Arsenic = (mg/kg)
Barium = (mg/kg)
Cadmium = (mg/kg)
Chromium (VI) = (mg/kg)
Copper = (mg/kg)
Lead = (mg/kg)
Nickel = (mg/kg)
Selenium = (mg/kg)
Silver = (mg/kg)
Zinc = (mg/kg)

mg/kg = MILLIGRAMS PER KILOGRAM

NA = NOT ANALYZED

NOTE:

VALUES PRESENTED WITH A LESS THAN SYMBOL (<) DID NOT CONTAIN CONCENTRATIONS AT/OR ABOVE LABORATORY REPORTING LIMITS AND/OR MINIMUM DETECTION LIMITS.

VALUES PRESENTED IN **BOLD** VALUES CONTAIN CONCENTRATIONS EXCEEDING COGCC TABLE 915-1 VALUES

*VALUES EXCEED COGCC TABLE 915-1 "PROTECTION OF GROUNDWATER SOIL SCREENING LEVELS"

**ACHIEVABLE PRACTICAL QUANTITATIVE LIMITS FOR HEXAVALENT CHROMIUM (Cr VI) IN SOILS IS IN THE RANGE OF 0.1 TO 1 mg/kg.

***ARSENIC IS NATURALLY OCCURRING IN COLORADO. LOCAL "CLEAN-UP LEVEL" (4.0 mg/kg) IS 1.25*BACKGROUND (3.2 mg/kg).

COGCC = COLORADO OIL AND GAS CONSERVATION COMMISSION

METALS IN SOIL MAP
BECCA #D 3-11
CLOSURE ASSESSMENT
40.252420 / -104.539510
NE¼ SW¼ SEC.3 T3N R64W 6PM
WELD COUNTY, COLORADO
API # 05-123-17286
REMEDIAL # 22098

DATE:
08/30/22
DRAWN BY:
AMN
FIG.
NO. 5



EAGLE
ENVIRONMENTAL
CONSULTING, INC.
8000 W 44th Ave, Wheat Ridge, CO 80033
Ph: 303-433-0479 • F: 303-325-5449



TABLES

Table 1: Photoionization Detector Reading Summary

Table 2: Soil Analytical Results Summary

Table 3: Polycyclic Aromatic Hydrocarbons Analytical Results Summary

Table 4: Metals Analytical Results Summary

TABLE 1
 PHOTOIONIZATION DETECTOR READING SUMMARY
 BECCA #D 3-11
 CLOSURE ASSESSMENT
 40.252420 / -104.539510
 NE1/4 SW1/4 SEC.3 T3N R64W 6PM
 WELD COUNTY, COLORADO
 API # 05-123-17286
 REMEDIATION # 22098

Sample Location (Latitude/Longitude)	Date	Approximate Depth (feet)	PID Reading (ppm-v)	Lab Submission (Y/N)
WH-SS-01 @ 6' (40.252421 / -104.539527)	04/15/22	6	8.3	N
WH-SS-02 @ 6' (40.252420 / -104.539508)	04/15/22	6	2.8	N
WH-SS-03 @ 6' (40.252397 / -104.539523)	04/15/22	6	0.3	N
WH-SS-04 6' (40.252412 / -104.539525)	04/15/22	6	1.3	N
WH-FS-01 @ 7' (40.252416 / -104.539524)	04/15/22	7	13.2	Y
Background-01 @ 3' (40.252413 / -104.539517)	04/15/22	3	0.5	Y
FL-SS-01 @ 4' (40.248862 / -104.540574)	05/24/22	4	2.5	Y
FL-SS-02 @ 3' (40.250364 / -104.539784)	05/24/22	3	1.2	N
FL-SS-03 @ 3' (40.250568 / -104.539660)	05/24/22	3	1.1	N
FL-SS-04 @ 3' (40.250776 / -104.539538)	05/24/22	3	0.6	N
FL-SS-05 @ 3' (40.250982 / -104.539424)	05/24/22	3	0.3	N
FL-SS-06 @ 3' (40.251118 / -104.539332)	05/24/22	3	1.2	N
FL-SS-07 @ 3' (40.251380 / -104.539213)	05/24/22	3	1.5	N
FL-SS-08 @ 3' (40.251616 / -104.539280)	05/24/22	3	1.6	N
FL-SS-09 @ 3' (40.251915 / -104.5393717)	05/24/22	3	1.5	N
FL-SS-10 @ 3' (40.252131 / -104.539446)	05/24/22	3	0.1	N
FL-SS-11 @ 3' (40.252387 / -104.539523)	05/24/22	3	0.3	N
Background-02 @ 1' (40.248778 / -104.540625)	05/24/22	1	0.1	Y
(Y/N) = Yes or No ppm-v = parts per million by volume PID = photoionization detector				

TABLE 2
SOIL ANALYTICAL RESULTS SUMMARY
BECCA #D 3-11
CLOSURE ASSESSMENT
40.252420 / -104.539510
NE1/4 SW1/4 SEC.3 T3N R64W 6PM
WELD COUNTY, COLORADO
API # 05-123-17286
REMEDIATION # 22098

Sample Location (Latitude/Longitude)	Date	Approximate Depth (feet)	PID Reading (ppm-v)	Benzene (mg/kg)	Toluene (mg/kg)	Ethylbenzene (mg/kg)	Total Xylenes (mg/kg)	TPH-GRO (mg/kg)	TPH-DRO (mg/kg)	TPH-RRO (mg/kg)	1,2,4-TMB (mg/kg)	1,3,5-TMB (mg/kg)	Boron (mg/L)	Specific Conductance (mmhos/cm)	pH (pH units)	SAR
COGCC Table 915-1 Residential Screening Levels (mg/kg)				1.20	490	5.8	58	500			30	27	2	<4	6-8.3	<6
COGCC Table 915-1 Protection of Groundwater Soil Screening Levels				0.0026	0.69	0.78	9.9	--			0.0081	0.0087	--	--	--	--
WH-FS-01 @ 7' (40.252416 / -104.539524)	04/15/22	7	13.2	<0.00200	<0.00200	<0.00200	0.00744	0.295	<25.0	<100	<0.00200	0.0159*	0.119	0.602	8.66	2.90
FL-SS-01 @ 4' (40.248862 / -104.540574)	05/24/22	4	2.5	<0.00200	<0.00200	<0.00200	<0.00200	<0.200	<25.0	<100	<0.00200	<0.00200	3.95	0.154	8.43	0.221
Background-02 @ 1' (40.248778 / -104.540625)	05/24/22	1	0.1	NA	NA	NA	NA	NA	NA	NA	NA	NA	<0.100	NA	7.50	NA
COGCC = Colorado Oil and Gas Conservation Commission mg/kg = milligrams per kilogram mmhos/cm = millimhos per centimeter PID = Photoionization Detector ppm-v = parts per million by volume mg/L = milligrams per liter SAR = Sodium Adsorption Ratio Note: Values presented with a less than symbol (<) did not contain concentrations at or above the laboratory MDL and/or reporting limit. Note: Values presented in BOLD contained concentrations exceeding COGCC Table 915-1 Regulatory Limits. Values with asterisk (*) exceed COGCC Table 915-1 protection of groundwater soil screening levels for that compound																
				TPH-GRO = Total Petroleum Hydrocarbons - Gasoline Range Organics				1,2,4-TMB = 1,2,4-Trimethylbenzene				MDL = Minimum Detection Limits				
				TPH-DRO = Total Petroleum Hydrocarbons - Diesel Range Organics				1,3,5-TMB = 1,3,5-Trimethylbenzene								
				TPH-RRO = Total Petroleum Hydrocarbons - Residual Range Organics												
				NA = Not Analyzed												

TABLE 3
POLYCYCLIC AROMATIC HYDROCARBONS ANALYTICAL RESULTS SUMMARY
BECCA #D 3-11
CLOSURE ASSESSMENT
40.252420 / -104.539510
NE1/4 SW1/4 SEC.3 T3N R64W 6PM
WELD COUNTY, COLORADO
API # 05-123-17286
REMEDIATION # 22098

Sample Location (Latitude/Longitude)	Date	Approximate Depth (feet)	PID Reading (ppm- v)	1-Methyl- naphthalene (mg/kg)	2-Methyl- naphthalene (mg/kg)	Acenaphthene (mg/kg)	Anthracene (mg/kg)	Benzo(a)-anthracene (mg/kg)	Benzo(a)- pyrene (mg/kg)	Benzo(b)- fluoranthene (mg/kg)	Benzo(k)- fluoranthene (mg/kg)	Chrysene (mg/kg)	Dibenzo(a,h)- anthracene (mg/kg)	Fluoranthene (mg/kg)	Fluorene (mg/kg)	Indeno(1,2,3- cd)-pyrene (mg/kg)	Naphthalene (mg/kg)	Pyrene (mg/kg)
COGCC Table 915-1 Residential Screening Levels				18	24	360	1,800	1.1	0.11	1.1	11	110	0.11	240	240	1.1	2	180
COGCC Table 915-1 Protection of Groundwater Soil Screening Levels				0.006	0.019	0.55	5.8	0.011	0.24	0.3	2.9	9	0.096	8.9	0.54	0.98	0.0038	1.3
WH-FS-01 @ 7" (40.252416 / -104.539524)	04/15/22	7	13.2	0.0106*	0.0108	0.00224	0.000382	<0.00067	0.00085	0.000677	<0.00067	0.00261	<0.00067	<0.00067	0.00575	<0.00067	0.00276	0.00333
FL-SS-01 @ 4" (40.248862 / -104.540574)	05/24/22	4	2.5	<0.00067	<0.00067	<0.00067	<0.00067	<0.00067	<0.00067	<0.00067	<0.00067	<0.00067	<0.00067	<0.00067	<0.00067	<0.00067	<0.00067	<0.00067
COGCC = Colorado Oil and Gas Conservation Commission PID = Photoionization Detector mg/kg = milligrams per kilogram ppm-v = parts per million by volume Note: Values presented with a less than symbol (<) did not contain concentrations at or above the laboratory reporting limit. Note: Values presented in BOLD contained concentrations exceeding COGCC Table 915-1 Regulatory Limits. Values with asterisk (*) exceed COGCC Table 915-1 protection of groundwater soil screening levels for that compound																		

TABLE 4
METALS ANALYTICAL RESULTS SUMMARY
BECCA #D 3-11
CLOSURE ASSESSMENT
40.252420 / -104.539510
NE1/4 SW1/4 SEC.3 T3N R64W 6PM
WELD COUNTY, COLORADO
API # 05-123-17286
REMEDIATION # 22098

Sample Location (Latitude/Longitude)	Date	Approximate Depth (feet)	Arsenic (mg/kg)	Barium (mg/kg)	Cadmium (mg/kg)	Hexavalent Chromium (mg/kg)	Copper (mg/kg)	Lead (mg/kg)	Nickel (mg/kg)	Selenium (mg/kg)	Silver (mg/kg)	Zinc (mg/kg)
COGCC Table 915-1 Residential Screening Levels			0.68***	15,000	71	0.3**	3,100	400	1,500	390	390	23,000
COGCC Table 915-1 Protection of Groundwater Soil Screening Levels			0.29***	82	0.38	0.00067**	46	14	26	0.26	0.8	370
Local Clean-up Level			4.0***	-	-	-	-	-	-	-	-	-
WH-FS-01 @ 7' (40.252416 / -104.539524)	04/15/22	7	1.51***	92.9*	0.157	<0.244**	10.7	29.7*	5.25	0.32*	0.0179	35
Background-01 @ 3' (40.252413 / -104.539517)	04/15/22	3	3.2***	109*	NA	NA	NA	6.1	NA	0.279*	NA	NA
COGCC = Colorado Oil and Gas Conservation Commission mg/kg = milligrams per kilogram NA = Not Analyzed Notes: Values presented with a less than symbol (<) did not contain concentrations at or above the laboratory reporting limit or minimum detection levels. Values presented in BOLD contained concentrations exceeding applicable COGCC Table 915-1 Regulatory Limits Values presented with asterisk (*) contained concentrations exceeding COGCC Table 915-1 Protection of Groundwater Soil Screening Levels **Achievable practical quantitative limits for Hexavalent Chromium in soils is in the range of 0.1 to 1 mg/kg. ***Arsenic is naturally occurring in Colorado. The Local Clean-up Level (4.0 mg/kg) is 1.25*Background (3.2 mg/kg).												



ATTACHMENT A

Photo Log

Becca #D 3-11
API # 05-123-17286
Remediation # 22098

Closure Assessment

April - May 2022

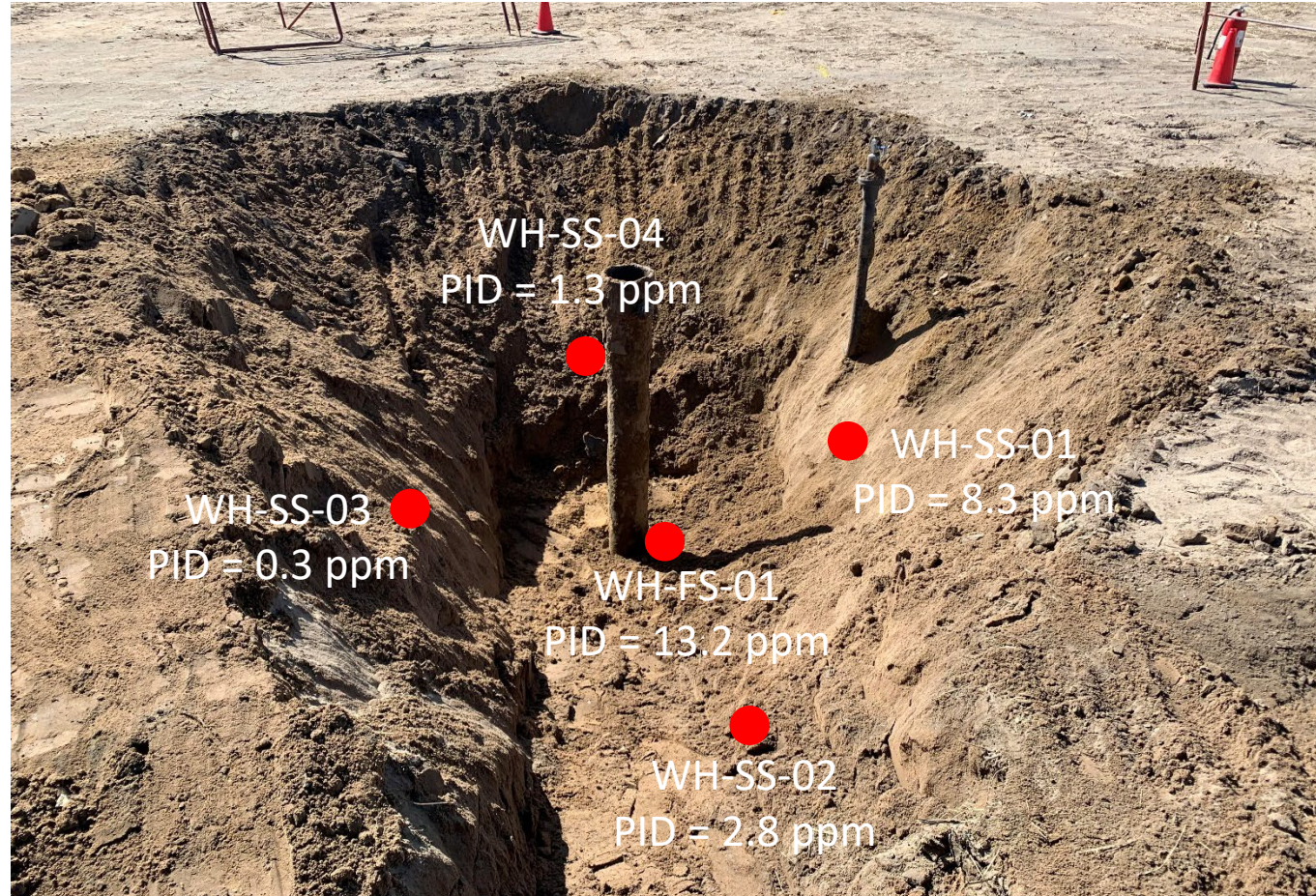


EAGLE
ENVIRONMENTAL
CONSULTING, INC.

8000 W 44th Ave, Wheat Ridge, CO 80033
Ph: 303-433-0479 • F: 303-325-5449



Wellhead Excavation – 04/15/22



Looking west

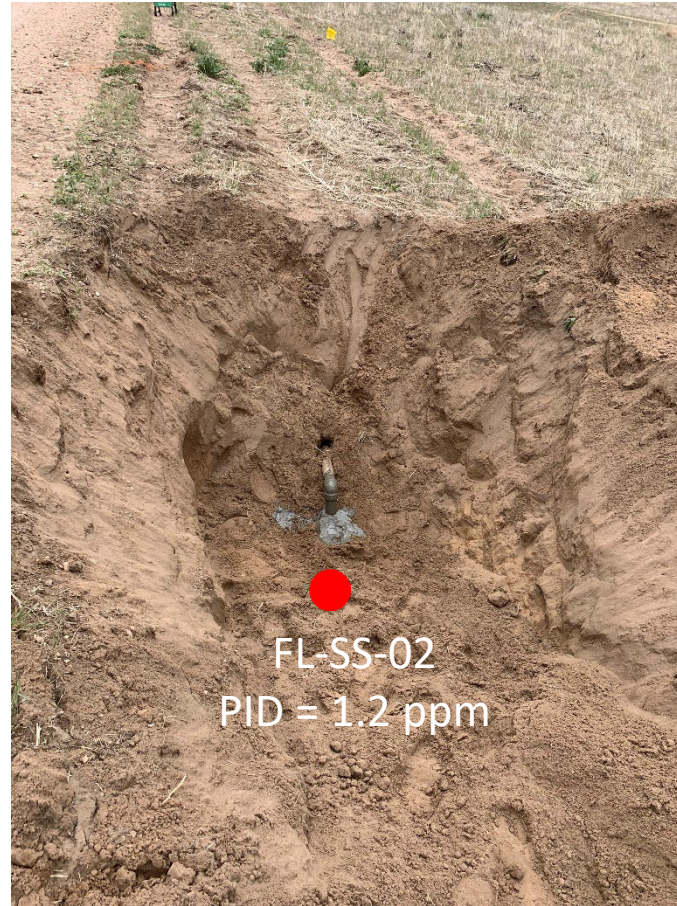
No petroleum hydrocarbon staining or odor observed

Flowline Removal/Assessment – 05/24/22



FL-SS-01
PID = 2.5 ppm

Looking south
Flowline terminus/Pt. B at separator – lab analyzed
No petroleum hydrocarbon staining or odor observed



FL-SS-02
PID = 1.2 ppm

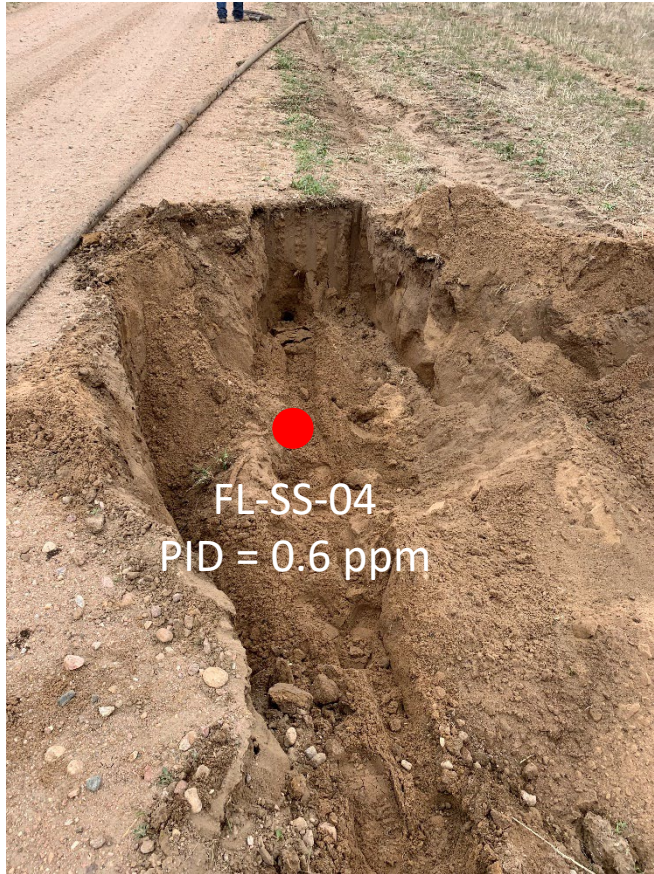
Looking south
Bellhole/cut point – field screened
No petroleum hydrocarbon staining or odor observed



FL-SS-03
PID = 1.1 ppm

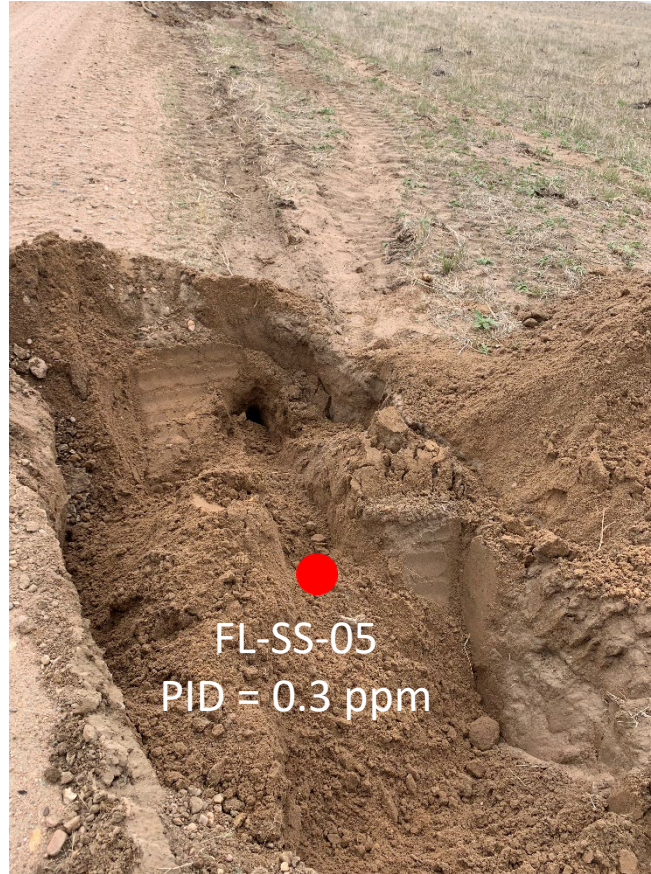
Looking south
Bellhole/cut point – field screened
No petroleum hydrocarbon staining or odor observed

Flowline Removal/Assessment – 05/24/22



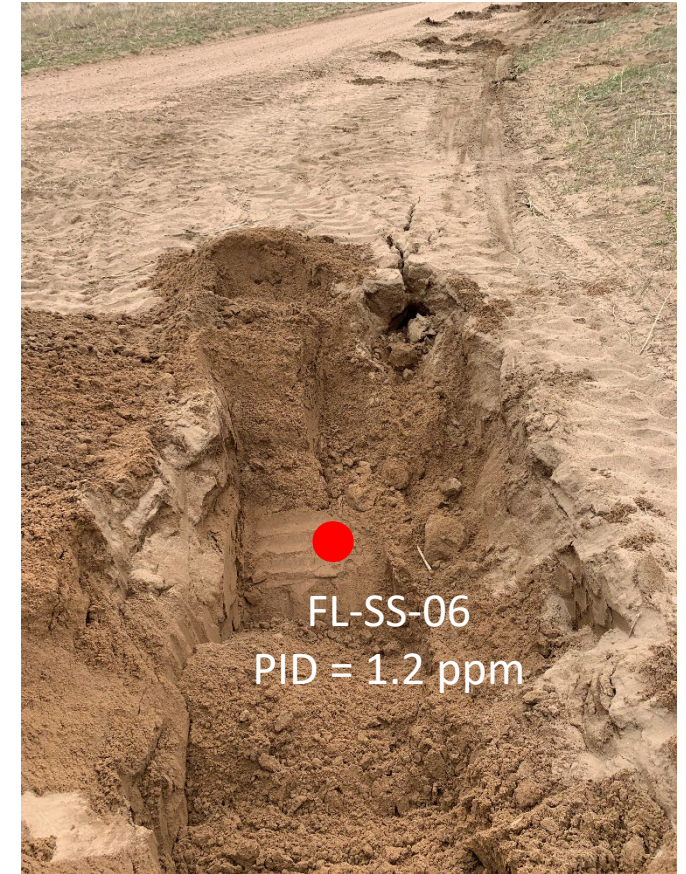
FL-SS-04
PID = 0.6 ppm

Looking south
Bellhole/cut point – field screened
No petroleum hydrocarbon staining or odor observed



FL-SS-05
PID = 0.3 ppm

Looking south
Bellhole/cut point – field screened
No petroleum hydrocarbon staining or odor observed



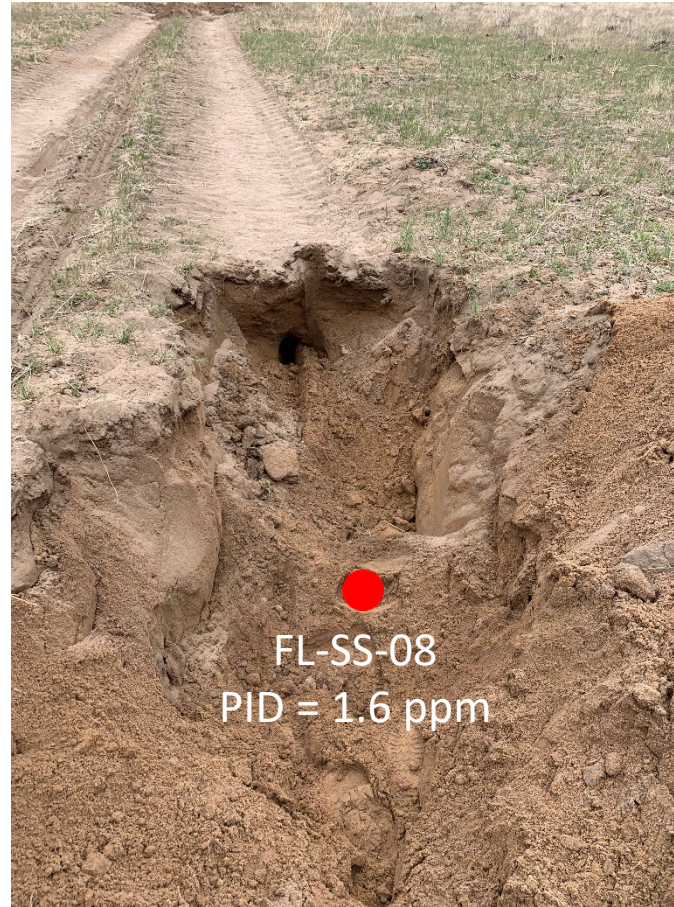
FL-SS-06
PID = 1.2 ppm

Looking southeast
Bellhole/cut point – field screened
No petroleum hydrocarbon staining or odor observed

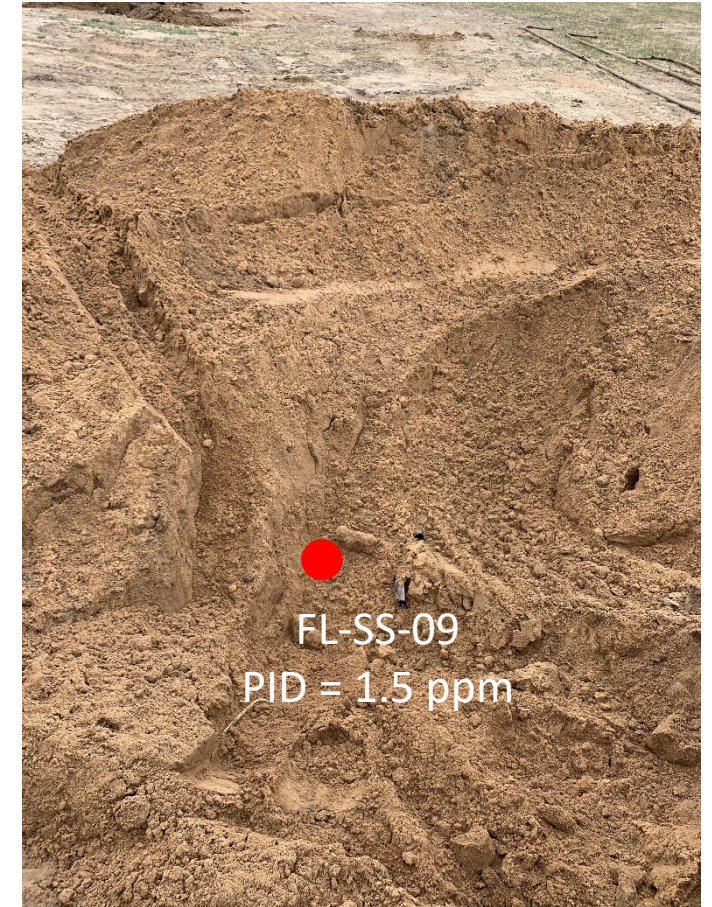
Flowline Removal/Assessment – 05/24/22



Looking southeast
Bellhole/cut point – field screened
No petroleum hydrocarbon staining or odor observed

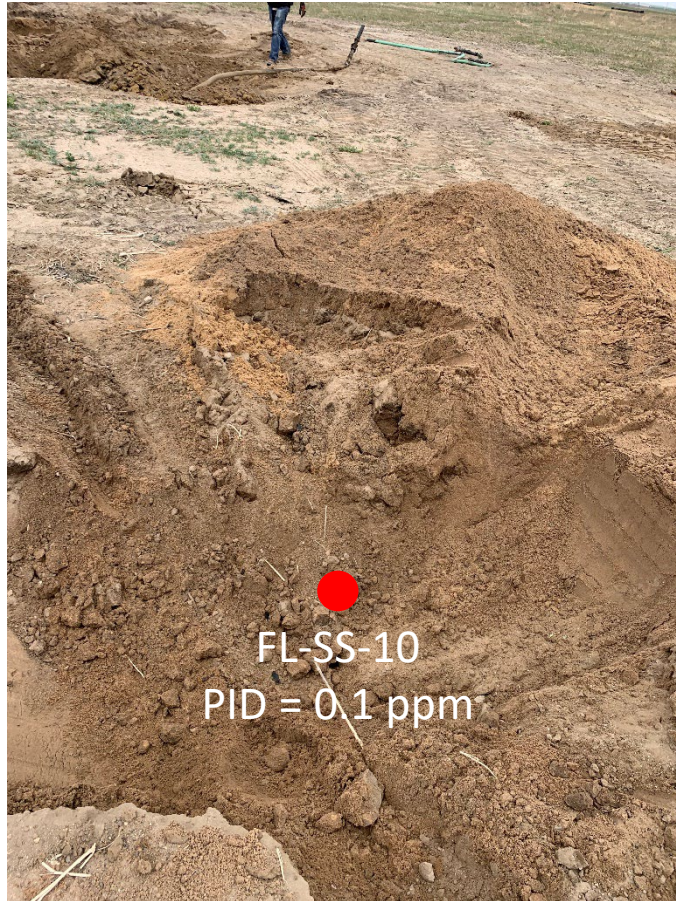


Looking southeast
Bellhole/cut point – field screened
No petroleum hydrocarbon staining or odor observed

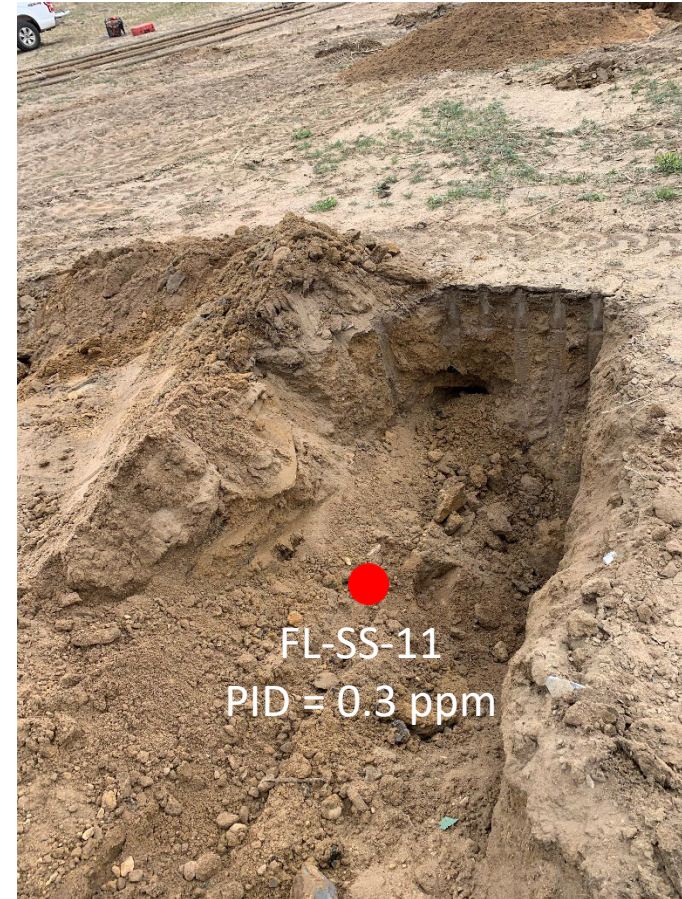


Looking northwest
Bellhole/cut point – field screened
No petroleum hydrocarbon staining or odor observed

Flowline Removal/Assessment – 05/24/22



Looking northwest
Bellhole/cut point – field screened
No petroleum hydrocarbon staining or odor observed



Looking southeast
Bellhole/cut point – field screened
No petroleum hydrocarbon staining or odor observed



ATTACHMENT B

Laboratory Analytical Reports



May 06, 2022

Eagle Environmental Consulting, Inc.

Martin C Eckert III

8000 W 44th Ave

Wheat Ridge CO 80033

Project Name - Noble - Becca #D 3-11

Project Number - [none]

Attached are your analytical results for Noble - Becca #D 3-11 received by Origins Laboratory, Inc. April 15, 2022. This project is associated with Origins project number Y204340-01.

The analytical results in the following report were analyzed under the guidelines of EPA Methods. These methods are identified as follows; "SW" are defined in SW-846, "EPA" are defined in 40CFR part 136 and "SM" are defined in the most current revision of Standard Methods For the Examination of Water and Wastewater.

The analytical results apply specifically to the samples and analyses specified per the attached Chain of Custody. As such, this report shall not be reproduced except in full, without the written approval of Origin's laboratory.

Unless otherwise noted, the analytical results for all soil samples are reported on a wet weight basis. All analytical analyses were performed under NELAP guidelines unless noted by a data qualifier.

Any holding time exceedances, deviations from the method specifications or deviations from Origins Laboratory's Standard Operating Procedures are outlined in the case narrative.

Thank you for selecting Origins for your analytical needs. Please contact us with any questions concerning this report, or if we can help with anything at all.

Origins Laboratory, Inc.
303.433.1322
o-squad@oelabinc.com



1725 Elk Place, Denver, CO 80211 | Phone: 303.433.1322 | Fax: 303.265.9645

Eagle Environmental Consulting, Inc.

8000 W 44th Ave

Wheat Ridge CO 80033

Martin C Eckert III

Project Number: [none]

Project: Noble - Becca #D 3-11

CROSS REFERENCE REPORT

Sample ID	Laboratory ID	Matrix	Date Sampled	Date Received
WH-FS-01@7'	Y204340-01	Soil	April 15, 2022 10:10	04/15/2022 12:12

Chain of Custody Modification Request

On 4/26/2022, Andrew Newberry from Eagle Environmental contacted Jordan Bynon via email regarding Y204340 requesting that Table 915 Metals be added to WH-FS-01@7'.

Requested modifications to the chain of custody were made by Jordan Bynon on 4/26/2022.

Origins Laboratory, Inc.



The results in this report apply to the samples analyzed in accordance with the chain of custody document. This analytical report must be reproduced in its entirety.

Eagle Environmental Consulting, Inc.
8000 W 44th Ave
Wheat Ridge CO 80033

Martin C Eckert III
Project Number: [none]
Project: Noble - Becca #D 3-11

Origins Laboratory

F-012207-01-R1
Effective Date: 01/09/12

Sample Receipt Checklist

Origins Work Order: Y204340 Client: Eagle
Client Project ID: Becca D 3-11

Checklist Completed by: SG Shipped Via: HD
(UPS, FedEx, Hand Delivered, Pick-up, etc.)
Date/time completed: 4/15/22 Airbill #: N/A

Matrix(s) Received: (Check all that apply): ☒ Soil/Solid ☐ Water ☐ Other: _____

Cooler Number/Temperature: 1 / 2.1 °C _____ °C _____ °C (Describe)

Thermometer ID: T004

Requirement Description	Yes	No	N/A	Comments (if any)
If samples require cooling, was the temperature between 0°C to ≤ 6°C ⁽¹⁾ ?	<input checked="" type="checkbox"/>	<input type="checkbox"/>	<input type="checkbox"/>	
Is there ice present (document if blue ice is used)	<input checked="" type="checkbox"/>	<input type="checkbox"/>	<input type="checkbox"/>	
Are custody seals present on cooler? (if so, document in comments if they are signed and dated, broken or intact)	<input type="checkbox"/>	<input checked="" type="checkbox"/>	<input type="checkbox"/>	
Are custody seals present on each sample container? (if so, document in comments if they are signed and dated, broken or intact)	<input type="checkbox"/>	<input checked="" type="checkbox"/>	<input type="checkbox"/>	
Were all samples received intact ⁽¹⁾ ?	<input checked="" type="checkbox"/>	<input type="checkbox"/>	<input type="checkbox"/>	
Was adequate sample volume provided ⁽¹⁾ ?	<input checked="" type="checkbox"/>	<input type="checkbox"/>	<input type="checkbox"/>	
Are short holding time analytes or samples with HTs due within 48 hours present ⁽¹⁾ ?	<input type="checkbox"/>	<input checked="" type="checkbox"/>	<input type="checkbox"/>	
Is a chain-of-custody (COC) present and filled out completely ⁽¹⁾ ?	<input checked="" type="checkbox"/>	<input type="checkbox"/>	<input type="checkbox"/>	
Does the COC agree with the number and type of sample bottles received ⁽¹⁾ ?	<input checked="" type="checkbox"/>	<input type="checkbox"/>	<input type="checkbox"/>	
Do the sample IDs on the bottle labels match the COC ⁽¹⁾ ?	<input checked="" type="checkbox"/>	<input type="checkbox"/>	<input type="checkbox"/>	
Is the COC properly relinquished by the client with date and time recorded ⁽¹⁾ ?	<input checked="" type="checkbox"/>	<input type="checkbox"/>	<input type="checkbox"/>	
For volatiles in water – is there headspace (> ¼ inch bubble) present? If yes, contact client and note in narrative.	<input type="checkbox"/>	<input type="checkbox"/>	<input checked="" type="checkbox"/>	
Are samples preserved that require preservation and was it checked ⁽¹⁾ ? (note ID of confirmation instrument used in comments) / (preservation is not confirmed for subcontracted analyses in order to insure sample integrity)/(pH <2 for samples preserved with HNO ₃ , HCl, H ₂ SO ₄) / (pH >10 for samples preserved with NaAsO ₂ +NaOH, ZnAc+NaOH)	<input type="checkbox"/>	<input type="checkbox"/>	<input checked="" type="checkbox"/>	
Additional Comments (if any):				

⁽¹⁾ If NO, then contact the client before proceeding with analysis and note date/time and person contacted as well as the corrective action to in the additional comments (above) and the case narrative.

Reviewed by: JP (Project Manager) Date/Time Reviewed: 4/18/22

Origins Laboratory, Inc.

J. Bynon

The results in this report apply to the samples analyzed in accordance with the chain of custody document. This analytical report must be reproduced in its entirety.

Eagle Environmental Consulting, Inc.
8000 W 44th Ave
Wheat Ridge CO 80033

Martin C Eckert III
Project Number: [none]
Project: Noble - Becca #D 3-11

WH-FS-01@7'

4/15/2022 10:10:00AM

Analyte	Result	Min Detection Limit	Reporting Limit	Units	Dilution	Batch	Prepared	Analyzed	Notes
---------	--------	---------------------	-----------------	-------	----------	-------	----------	----------	-------

Origins Laboratory, Inc.
Y204340-01 (Soil)

Boron (DTPA Sorbitol)

Boron	0.119	0.0992	mg/L	1	B2D1511	04/15/2022	04/18/2022	
-------	-------	--------	------	---	---------	------------	------------	--

DRO/ORO by EPA 8015D

Diesel (C10-C28)	ND	25.0	mg/kg	1	B2D1914	04/19/2022	04/23/2022	U
Residual Range Organics (C28-C40)	ND	100	"	"	"	"	"	U

Surrogate: o-Terphenyl	80.0 %	50-150			"	"	"
------------------------	--------	--------	--	--	---	---	---

GBTEX+TMBs by 8260D

1,2,4-Trimethylbenzene	ND	0.00200	mg/kg	1	B2D1604	04/16/2022	04/20/2022	U
1,3,5-Trimethylbenzene	0.0159	0.00200	"	"	"	"	"	
Benzene	ND	0.00200	"	"	"	"	"	U
Ethylbenzene	ND	0.00200	"	"	"	"	"	U
Toluene	ND	0.00200	"	"	"	"	"	U
Xylenes, total	0.00744	0.00200	"	"	"	"	"	
Gasoline Range Hydrocarbons	0.295	0.200	"	"	"	"	"	

Surrogate: 1,2-Dichloroethane-d4	117 %	70-130			"	"	"
Surrogate: Toluene-d8	96.0 %	70-130			"	"	"

Origins Laboratory, Inc.



The results in this report apply to the samples analyzed in accordance with the chain of custody document. This analytical report must be reproduced in its entirety.

Eagle Environmental Consulting, Inc.
8000 W 44th Ave
Wheat Ridge CO 80033

Martin C Eckert III
Project Number: [none]
Project: Noble - Becca #D 3-11

WH-FS-01@7'

4/15/2022 10:10:00AM

Analyte	Result	Min Detection Limit	Reporting Limit	Units	Dilution	Batch	Prepared	Analyzed	Notes
---------	--------	---------------------	-----------------	-------	----------	-------	----------	----------	-------

Origins Laboratory, Inc.
Y204340-01 (Soil)

GBTEX+TMBs by 8260D

Surrogate: 4-Bromofluorobenzene	101 %	70-130	B2D16 04	04/16/2022	04/20/2022
---------------------------------	-------	--------	-------------	------------	------------

Metals by Saturated Paste by EPA 6010

Calcium	1.14	0.499	meq/L	10	[CALC]	04/18/2022	04/19/2022
Magnesium	ND	0.823	"	"	"	"	"
Sodium	2.42	0.435	"	"	"	"	"

PAH by 8270D SIM

1-Methylnaphthalene	0.0106	0.000364	0.00067	mg/Kg	1	L611478	04/19/2022	04/21/2022
2-Methylnaphthalene	0.0108	0.000645	0.00067	"	"	"	"	"
Acenaphthene	0.00224	0.000304	0.00067	"	"	"	"	"
Anthracene	0.000382	0.000334	0.00067	"	"	"	"	" J
Benzo(a)anthracene	ND	0.000493	0.00067	"	"	"	"	"
Benzo(a)pyrene	0.00085	0.000468	0.00067	"	"	"	"	"
Benzo(b)fluoranthene	0.000677	0.000585	0.00067	"	"	"	"	"
Benzo(k)fluoranthene	ND	0.000437	0.00067	"	"	"	"	"
Chrysene	0.00261	0.000624	0.00067	"	"	"	"	"
Dibenz(a,h)anthracene	ND	0.000614	0.00067	"	"	"	"	"
Fluoranthene	ND	0.000394	0.00067	"	"	"	"	"
Fluorene	0.00575	0.000286	0.00067	"	"	"	"	"
Indeno(1,2,3-cd)pyrene	ND	0.000627	0.00067	"	"	"	"	"

Origins Laboratory, Inc.



The results in this report apply to the samples analyzed in accordance with the chain of custody document. This analytical report must be reproduced in its entirety.

Eagle Environmental Consulting, Inc.
8000 W 44th Ave
Wheat Ridge CO 80033

Martin C Eckert III
Project Number: [none]
Project: Noble - Becca #D 3-11

WH-FS-01@7'

4/15/2022 10:10:00AM

Analyte	Result	Min Detection Limit	Reporting Limit	Units	Dilution	Batch	Prepared	Analyzed	Notes
---------	--------	---------------------	-----------------	-------	----------	-------	----------	----------	-------

Waypoint Analytical, Inc.
Y204340-01 (Soil)

PAH by 8270D SIM

Naphthalene	0.00276	0.000484	0.00067	mg/Kg	1	L611478	04/19/2022	04/21/2022	
Pyrene	0.00333	0.000643	0.00067	"	"	"	"	"	

Surrogate: 2-Fluorobiphenyl	57.8 %		33-115			"	"	"	
Surrogate: 4-Terphenyl-d14	62.3 %		33-122			"	"	"	
Surrogate: Nitrobenzene-d5	45.5 %		29-110			"	"	"	

pH in Soil by 9045D

pH	8.66			pH Units	1	B2D1805	04/20/2022	04/21/2022	
----	------	--	--	----------	---	---------	------------	------------	--

SAR by 20B Saturated Paste

SAR	2.90			SAR	1	B2D1801	04/18/2022	04/19/2022	
-----	------	--	--	-----	---	---------	------------	------------	--

Specific Conductance Mod. 9050A

Specific Conductance (EC)	0.602		0.00500	mmhos/cm	1	B2D1807	04/18/2022	04/19/2022	
---------------------------	-------	--	---------	----------	---	---------	------------	------------	--

Total Metals by 6020B

Arsenic	1.51	0.0855	0.25	mg/Kg	5	L613295	04/28/2022	04/29/2022	
Barium	92.9	0.042	0.25	"	"	"	"	"	
Cadmium	0.157	0.0259	0.25	"	"	"	"	"	J

Origins Laboratory, Inc.



The results in this report apply to the samples analyzed in accordance with the chain of custody document. This analytical report must be reproduced in its entirety.

Eagle Environmental Consulting, Inc.
8000 W 44th Ave
Wheat Ridge CO 80033

Martin C Eckert III
Project Number: [none]
Project: Noble - Becca #D 3-11

WH-FS-01@7'

4/15/2022 10:10:00AM

Analyte	Result	Min Detection Limit	Reporting Limit	Units	Dilution	Batch	Prepared	Analyzed	Notes
---------	--------	---------------------	-----------------	-------	----------	-------	----------	----------	-------

Waypoint Analytical, LLC.
Y204340-01 (Soil)

Total Metals by 6020B

Copper	10.7	0.0806	0.25	mg/Kg	5	L613295	04/28/2022	04/29/2022	
Lead	29.7	0.031	0.25	"	"	"	"	"	
Nickel	5.25	0.0633	0.25	"	"	"	"	"	
Selenium	0.32	0.103	0.25	"	"	"	"	"	
Silver	0.0179	0.0067	0.25	"	"	"	"	"	J
Zinc	35	0.534	2.5	"	"	"	"	"	

Total Metals by 7196A

Chromium, Hexavalent	ND	0.244	0.5	mg/Kg	1	L614196	04/15/2022	05/04/2022	
----------------------	----	-------	-----	-------	---	---------	------------	------------	--

Origins Laboratory, Inc.



The results in this report apply to the samples analyzed in accordance with the chain of custody document. This analytical report must be reproduced in its entirety.

Eagle Environmental Consulting, Inc.
8000 W 44th Ave
Wheat Ridge CO 80033

Martin C Eckert III
Project Number: [none]
Project: Noble - Becca #D 3-11

Volatile Organic Compounds by GC/MS SW846 8260D - Quality Control
Origins Laboratory, Inc.

Analyte	Result	Reporting Limit	Units	Spike Level	Source Result	%REC	%REC Limits	RPD	RPD Limit	Notes
Batch B2D1604 - EPA 5030 (soil)										
Blank (B2D1604-BLK1)					Prepared: 04/16/2022 Analyzed: 04/20/2022					
1,2,4-Trimethylbenzene	ND	0.00200	mg/kg							U
1,3,5-Trimethylbenzene	ND	0.00200	"							U
Benzene	ND	0.00200	"							U
Ethylbenzene	ND	0.00200	"							U
Naphthalene	ND	0.0100	"							U
Toluene	ND	0.00200	"							U
Xylenes, total	ND	0.00200	"							U
Gasoline Range Hydrocarbons	ND	0.200	"							U
Surrogate: 1,2-Dichloroethane-d4	0.13		"	0.125	107		70-130			
Surrogate: Toluene-d8	0.12		"	0.125	98.3		70-130			
Surrogate: 4-Bromofluorobenzene	0.12		"	0.125	99.8		70-130			

Origins Laboratory, Inc.



The results in this report apply to the samples analyzed in accordance with the chain of custody document. This analytical report must be reproduced in its entirety.

Eagle Environmental Consulting, Inc.
8000 W 44th Ave
Wheat Ridge CO 80033

Martin C Eckert III
Project Number: [none]
Project: Noble - Becca #D 3-11

Volatile Organic Compounds by GC/MS SW846 8260D - Quality Control

Origins Laboratory, Inc.

Analyte	Result	Reporting Limit	Units	Spike Level	Source Result	%REC	%REC Limits	RPD	RPD Limit	Notes
---------	--------	-----------------	-------	-------------	---------------	------	-------------	-----	-----------	-------

Batch B2D1604 - EPA 5030 (soil)

LCS (B2D1604-BS1)

Prepared: 04/16/2022 Analyzed: 04/20/2022

1,2,4-Trimethylbenzene	0.0967	0.00200	mg/kg	0.100		96.7	70-130			
1,3,5-Trimethylbenzene	0.106	0.00200	"	0.100		106	70-130			
Benzene	0.103	0.00200	"	0.100		103	70-130			
Ethylbenzene	0.107	0.00200	"	0.100		107	70-130			
Naphthalene	0.0988	0.0100	"	0.100		98.8	70-130			
Toluene	0.0914	0.00200	"	0.100		91.4	70-130			
o-Xylene	0.0975	0.00200	"	0.100		97.5	70-130			
m,p-Xylene	0.200	0.00400	"	0.200		100	70-130			
Surrogate: 1,2-Dichloroethane-d4	0.14		"	0.125		111	70-130			
Surrogate: Toluene-d8	0.13		"	0.125		101	70-130			
Surrogate: 4-Bromofluorobenzene	0.12		"	0.125		99.9	70-130			

Origins Laboratory, Inc.



The results in this report apply to the samples analyzed in accordance with the chain of custody document. This analytical report must be reproduced in its entirety.

Eagle Environmental Consulting, Inc.
8000 W 44th Ave
Wheat Ridge CO 80033

Martin C Eckert III
Project Number: [none]
Project: Noble - Becca #D 3-11

Volatile Organic Compounds by GC/MS SW846 8260D - Quality Control
Origins Laboratory, Inc.

Analyte	Result	Reporting Limit	Units	Spike Level	Source Result	%REC	%REC Limits	RPD	RPD Limit	Notes
Batch B2D1604 - EPA 5030 (soil)										
Matrix Spike (B2D1604-MS1)		Source: Y204299-01			Prepared: 04/16/2022 Analyzed: 04/20/2022					
1,2,4-Trimethylbenzene	0.0944	0.00200	mg/kg	0.100	ND	94.4	70-130			
1,3,5-Trimethylbenzene	0.104	0.00200	"	0.100	ND	104	70-130			
Benzene	0.0998	0.00200	"	0.100	ND	99.8	70-130			
Ethylbenzene	0.106	0.00200	"	0.100	ND	106	70-130			
Naphthalene	0.0905	0.0100	"	0.100	0.000880	89.6	70-130			
Toluene	0.0898	0.00200	"	0.100	ND	89.8	70-130			
o-Xylene	0.0964	0.00200	"	0.100	ND	96.4	70-130			
m,p-Xylene	0.196	0.00400	"	0.200	ND	98.0	70-130			
Surrogate: 1,2-Dichloroethane-d4	0.13		"	0.125		105	70-130			
Surrogate: Toluene-d8	0.13		"	0.125		101	70-130			
Surrogate: 4-Bromofluorobenzene	0.13		"	0.125		100	70-130			

Origins Laboratory, Inc.



The results in this report apply to the samples analyzed in accordance with the chain of custody document. This analytical report must be reproduced in its entirety.

Eagle Environmental Consulting, Inc.
8000 W 44th Ave
Wheat Ridge CO 80033

Martin C Eckert III
Project Number: [none]
Project: Noble - Becca #D 3-11

Volatile Organic Compounds by GC/MS SW846 8260D - Quality Control
Origins Laboratory, Inc.

Analyte	Result	Reporting Limit	Units	Spike Level	Source Result	%REC	%REC Limits	RPD	RPD Limit	Notes
Batch B2D1604 - EPA 5030 (soil)										
Matrix Spike Dup (B2D1604-MSD1)		Source: Y204299-01			Prepared: 04/16/2022 Analyzed: 04/20/2022					
1,2,4-Trimethylbenzene	0.0931	0.00200	mg/kg	0.100	ND	93.1	70-130	1.39	20	
1,3,5-Trimethylbenzene	0.102	0.00200	"	0.100	ND	102	70-130	2.25	20	
Benzene	0.0977	0.00200	"	0.100	ND	97.7	70-130	2.17	20	
Ethylbenzene	0.102	0.00200	"	0.100	ND	102	70-130	3.30	20	
Naphthalene	0.0919	0.0100	"	0.100	0.000880	91.0	70-130	1.54	20	
Toluene	0.0880	0.00200	"	0.100	ND	88.0	70-130	2.09	20	
o-Xylene	0.0941	0.00200	"	0.100	ND	94.1	70-130	2.37	20	
m,p-Xylene	0.190	0.00400	"	0.200	ND	95.1	70-130	3.05	20	
Surrogate: 1,2-Dichloroethane-d4	0.13		"	0.125		104	70-130			
Surrogate: Toluene-d8	0.13		"	0.125		101	70-130			
Surrogate: 4-Bromofluorobenzene	0.12		"	0.125		99.8	70-130			

Origins Laboratory, Inc.



The results in this report apply to the samples analyzed in accordance with the chain of custody document. This analytical report must be reproduced in its entirety.

Eagle Environmental Consulting, Inc.
8000 W 44th Ave
Wheat Ridge CO 80033

Martin C Eckert III
Project Number: [none]
Project: Noble - Becca #D 3-11

Volatile Organic Compounds by GC/MS SW846 8260D - Quality Control
Origins Laboratory, Inc.

Analyte	Result	Reporting Limit	Units	Spike Level	Source Result	%REC	%REC Limits	RPD	RPD Limit	Notes
Batch B2D1914 - EPA 3550B										
Blank (B2D1914-BLK1)					Prepared: 04/19/2022 Analyzed: 04/22/2022					
Diesel (C10-C28)	ND	25.0	mg/kg							U
Residual Range Organics (C28-C40)	ND	100	"							U
Surrogate: o-Terphenyl	24		"	24.9		96.5	50-150			

Origins Laboratory, Inc.



The results in this report apply to the samples analyzed in accordance with the chain of custody document. This analytical report must be reproduced in its entirety.

Eagle Environmental Consulting, Inc.
8000 W 44th Ave
Wheat Ridge CO 80033

Martin C Eckert III
Project Number: [none]
Project: Noble - Becca #D 3-11

Extractable Petroleum Hydrocarbons by 8015D - Quality Control
Origins Laboratory, Inc.

Analyte	Result	Reporting Limit	Units	Spike Level	Source Result	%REC	%REC Limits	RPD	RPD Limit	Notes
---------	--------	-----------------	-------	-------------	---------------	------	-------------	-----	-----------	-------

Batch B2D1914 - EPA 3550B

LCS (B2D1914-BS1)

Prepared: 04/19/2022 Analyzed: 04/22/2022

Diesel (C10-C28)	955	50.0	mg/kg	1000		95.5	70-130			
Residual Range Organics (C28-C40)	987	200	"	1000		98.7	70-130			
Surrogate: o-Terphenyl	50		"	49.8		99.7	50-150			

Origins Laboratory, Inc.



The results in this report apply to the samples analyzed in accordance with the chain of custody document. This analytical report must be reproduced in its entirety.

Eagle Environmental Consulting, Inc.
8000 W 44th Ave
Wheat Ridge CO 80033

Martin C Eckert III
Project Number: [none]
Project: Noble - Becca #D 3-11

Extractable Petroleum Hydrocarbons by 8015D - Quality Control
Origins Laboratory, Inc.

Analyte	Result	Reporting Limit	Units	Spike Level	Source Result	%REC	%REC Limits	RPD	RPD Limit	Notes
Batch B2D1914 - EPA 3550B										
Matrix Spike (B2D1914-MS1)		Source: Y204320-01			Prepared: 04/19/2022 Analyzed: 04/22/2022					
Diesel (C10-C28)	930	50.0	mg/kg	1000	ND	93.0	70-130			
Residual Range Organics (C28-C40)	854	200	"	1000	ND	85.4	70-130			
Surrogate: o-Terphenyl	44		"	49.8		87.9	50-150			

Origins Laboratory, Inc.



The results in this report apply to the samples analyzed in accordance with the chain of custody document. This analytical report must be reproduced in its entirety.

Eagle Environmental Consulting, Inc.
8000 W 44th Ave
Wheat Ridge CO 80033

Martin C Eckert III
Project Number: [none]
Project: Noble - Becca #D 3-11

Extractable Petroleum Hydrocarbons by 8015D - Quality Control

Origins Laboratory, Inc.

Analyte	Result	Reporting Limit	Units	Spike Level	Source Result	%REC	%REC Limits	RPD	RPD Limit	Notes
Batch B2D1914 - EPA 3550B										
Matrix Spike Dup (B2D1914-MSD1)		Source: Y204320-01			Prepared: 04/19/2022 Analyzed: 04/22/2022					
Diesel (C10-C28)	956	50.0	mg/kg	1000	ND	95.6	70-130	2.74	35	
Residual Range Organics (C28-C40)	926	200	"	1000	ND	92.6	70-130	8.18	35	
Surrogate: o-Terphenyl	46		"	49.8		92.1	50-150			

Origins Laboratory, Inc.



The results in this report apply to the samples analyzed in accordance with the chain of custody document. This analytical report must be reproduced in its entirety.

Eagle Environmental Consulting, Inc.
8000 W 44th Ave
Wheat Ridge CO 80033

Martin C Eckert III
Project Number: [none]
Project: Noble - Becca #D 3-11

Extractable Petroleum Hydrocarbons by 8015D - Quality Control

Origins Laboratory, Inc.

Analyte	Result	Reporting Limit	Units	Spike Level	Source Result	%REC	%REC Limits	RPD	RPD Limit	Notes
---------	--------	-----------------	-------	-------------	---------------	------	-------------	-----	-----------	-------

Saturated Paste - Quality Control

Origins Laboratory, Inc.

Analyte	Result	Reporting Limit	Units	Spike Level	Source Result	%REC	%REC Limits	RPD	RPD Limit	Notes
---------	--------	-----------------	-------	-------------	---------------	------	-------------	-----	-----------	-------

Batch B2D1805 - NO PREP

Duplicate (B2D1805-DUP1)

Source: Y204351-02

Prepared: 04/20/2022 Analyzed: 04/21/2022

pH	7.95		pH Units	7.80		1.90	25
----	------	--	----------	------	--	------	----

Batch B2D1807 - NO PREP

Blank (B2D1807-BLK1)

Prepared: 04/18/2022 Analyzed: 04/19/2022

Specific Conductance (EC)	0.000900	0.00500	mmhos/cm
---------------------------	----------	---------	----------

Duplicate (B2D1807-DUP1)

Source: Y204339-01

Prepared: 04/18/2022 Analyzed: 04/19/2022

Specific Conductance (EC)	4.84	0.00500	mmhos/cm	5.47		12.1	25
---------------------------	------	---------	----------	------	--	------	----

Origins Laboratory, Inc.



The results in this report apply to the samples analyzed in accordance with the chain of custody document. This analytical report must be reproduced in its entirety.

Eagle Environmental Consulting, Inc.
8000 W 44th Ave
Wheat Ridge CO 80033

Martin C Eckert III
Project Number: [none]
Project: Noble - Becca #D 3-11

Total Metals by 6020B - Quality Control Waypoint Analytical, LLC.

Analyte	Result	Reporting Limit	Units	Spike Level	Source Result	%REC	%REC Limits	RPD	RPD Limit	Notes
Batch L613295 - 3050B										
MSD (L 94018-MSD-L613295)			Source: 94018		Prepared: 04/28/2022 Analyzed: 04/29/2022					
Selenium	3.98	0.103	mg/Kg	4.63	0.2	82	75-125	4.9	80	
Silver	0.477	0.0067	"	0.463	0.021	98	75-125	1.4	80	
Nickel	6.85	0.0633	"	2.32	4.32	109	75-125	3.1	80	
Lead	10.9	0.031	"	2.32	10.5	17	75-125	94.6	80	*
Copper	7.72	0.0806	"	2.32	4.75	128	75-125	7	80	*
Cadmium	0.52	0.0259	"	0.463	0.0629	99	75-125	3	80	
Barium	53	0.042	"	4.63	42.7	222	75-125	13	80	*
Arsenic	3.29	0.0855	"	2.32	1.25	88	75-125	4.1	80	
Zinc	46.1	0.534	"	23.2	20	113	75-125	0.4	80	
MS (L 94018-MS-L613295)			Source: 94018		Prepared: 04/28/2022 Analyzed: 04/29/2022					
Zinc	45.9	0.534	mg/Kg	24.3	20	106	75-125			
Silver	0.484	0.0067	"	0.487	0.021	95	75-125			
Selenium	4.18	0.103	"	4.87	0.2	82	75-125			
Lead	30.5	0.031	"	2.43	10.5	822	75-125			*
Barium	46.5	0.042	"	4.87	42.7	78	75-125			
Nickel	7.07	0.0633	"	2.43	4.32	113	75-125			
Arsenic	3.43	0.0855	"	2.43	1.25	90	75-125			
Cadmium	0.536	0.0259	"	0.487	0.0629	97	75-125			
Copper	8.28	0.0806	"	2.43	4.75	145	75-125			*
LCS (LCS-L613295)			Prepared: 04/28/2022 Analyzed: 04/29/2022							
Zinc	23.6	0.534	mg/Kg	25		94	80-120			
Copper	2.56	0.0806	"	2.5		102	80-120			
Cadmium	0.472	0.0259	"	0.5		94	80-120			
Barium	4.72	0.042	"	5		94	80-120			
Arsenic	2.55	0.0855	"	2.5		102	80-120			

Origins Laboratory, Inc.



The results in this report apply to the samples analyzed in accordance with the chain of custody document. This analytical report must be reproduced in its entirety.

Eagle Environmental Consulting, Inc.
8000 W 44th Ave
Wheat Ridge CO 80033

Martin C Eckert III
Project Number: [none]
Project: Noble - Becca #D 3-11

Total Metals by 6020B - Quality Control Waypoint Analytical, LLC.

Analyte	Result	Reporting Limit	Units	Spike Level	Source Result	%REC	%REC Limits	RPD	RPD Limit	Notes
---------	--------	-----------------	-------	-------------	---------------	------	-------------	-----	-----------	-------

Batch L613295 - 3050B

LCS (LCS-L613295)

Prepared: 04/28/2022 Analyzed: 04/29/2022

Lead	2.4	0.031	mg/Kg	2.5		96	80-120			
Selenium	5	0.103	"	5		100	80-120			
Silver	0.491	0.0067	"	0.5		98	80-120			
Nickel	2.37	0.0633	"	2.5		95	80-120			

LRB (LRB-L613295)

Prepared: 04/28/2022 Analyzed: 04/29/2022

Lead	ND	0.25	mg/Kg				-			
Silver	ND	0.25	"				-			
Selenium	ND	0.25	"				-			
Nickel	ND	0.25	"				-			
Arsenic	ND	0.25	"				-			
Barium	ND	0.25	"				-			
Cadmium	ND	0.25	"				-			
Copper	ND	0.25	"				-			
Zinc	ND	2.5	"				-			

Origins Laboratory, Inc.



The results in this report apply to the samples analyzed in accordance with the chain of custody document. This analytical report must be reproduced in its entirety.

Eagle Environmental Consulting, Inc.
8000 W 44th Ave
Wheat Ridge CO 80033

Martin C Eckert III
Project Number: [none]
Project: Noble - Becca #D 3-11

Total Metals by 7196A - Quality Control Waypoint Analytical, LLC.

Analyte	Result	Reporting Limit	Units	Spike Level	Source Result	%REC	%REC Limits	RPD	RPD Limit	Notes
Batch L614196 -										
DUP (L 90482-DUP)		Source: 90482			Prepared: Analyzed: 05/04/2022					
Chromium, Hexavalent	ND	2.44	mg/Kg		90482	-	0	20		
MS (L 90482-MS)		Source: 90482			Prepared: Analyzed: 05/04/2022					
Chromium, Hexavalent	ND	2.44	mg/Kg	7.86	90482	0	75-125			*
LCS (LCS)					Prepared: Analyzed: 05/04/2022					
Chromium, Hexavalent	7.36	0.244	mg/Kg	8		92	75-125			
LRB (LRB)					Prepared: Analyzed: 05/04/2022					
Chromium, Hexavalent	0.359	0.5	mg/Kg			-				J

Origins Laboratory, Inc.



The results in this report apply to the samples analyzed in accordance with the chain of custody document. This analytical report must be reproduced in its entirety.

Eagle Environmental Consulting, Inc.
8000 W 44th Ave
Wheat Ridge CO 80033

Martin C Eckert III
Project Number: [none]
Project: Noble - Becca #D 3-11

PAH by 8270D SIM - Quality Control
Waypoint Analytical, Inc.

Analyte	Result	Reporting Limit	Units	Spike Level	Source Result	%REC	%REC Limits	RPD	RPD Limit	Notes
---------	--------	-----------------	-------	-------------	---------------	------	-------------	-----	-----------	-------

Batch L611478 - 3550B

MSD (L 97924-MSD-L611478)		Source: 97924			Prepared: 04/19/2022 Analyzed: 04/21/2022					
Benzo(b)fluoranthene	0.0777	0.000585	mg/Kg	0.167	<0.000585	46.5	30-130	0.8	30	
Benzo(a)pyrene	0.099	0.000468	"	0.167	<0.000468	59.2	30-130	0.8	30	
Benzo(k)fluoranthene	0.09	0.000437	"	0.167	<0.000437	53.8	30-130	1.5	30	
Chrysene	0.0993	0.000624	"	0.167	<0.000624	59.4	30-130	3.6	30	
Benzo(a)anthracene	0.0987	0.000493	"	0.167	<0.000493	59.1	30-130	5.2	30	
Fluoranthene	0.0962	0.000394	"	0.167	<0.000394	57.6	30-130	3.6	30	
Fluorene	0.0935	0.000286	"	0.167	<0.000286	55.9	30-130	3.3	30	
Indeno(1,2,3-cd)pyrene	0.0972	0.000627	"	0.167	<0.000627	58.2	30-130	5.7	30	
Naphthalene	0.0838	0.000484	"	0.167	<0.000484	50.1	30-130	6.3	30	
Pyrene	0.0966	0.000643	"	0.167	<0.000643	57.8	30-130	5.4	30	
Dibenz(a,h)anthracene	0.103	0.000614	"	0.167	<0.000614	61.6	30-130	1.9	30	
Acenaphthene	0.0874	0.000304	"	0.167	<0.000304	52.3	30-130	5.9	30	
2-Methylnaphthalene	0.0827	0.000645	"	0.167	<0.000645	49.5	30-130	6.2	30	
1-Methylnaphthalene	0.0831	0.000364	"	0.167	<0.000364	49.7	30-130	7.8	30	
Anthracene	0.0921	0.000334	"	0.167	<0.000334	55.1	30-130	3.8	30	
Surrogate: Nitrobenzene-d5	54.6		"	0.333	188	54.6	29-110			
Surrogate: 4-Terphenyl-d14	62.1		"	0.333	213	62.1	33-122			
Surrogate: 2-Fluorobiphenyl	48.3		"	0.333	167	48.3	33-115			

MS (L 97924-MS-L611478)		Source: 97924			Prepared: 04/19/2022 Analyzed: 04/21/2022					
Dibenz(a,h)anthracene	0.105	0.000614	mg/Kg	0.167	<0.000614	62.8	30-130			
1-Methylnaphthalene	0.0899	0.000364	"	0.167	<0.000364	53.8	30-130			
2-Methylnaphthalene	0.088	0.000645	"	0.167	<0.000645	52.6	30-130			
Pyrene	0.102	0.000643	"	0.167	<0.000643	61	30-130			
Naphthalene	0.0893	0.000484	"	0.167	<0.000484	53.4	30-130			
Indeno(1,2,3-cd)pyrene	0.103	0.000627	"	0.167	<0.000627	61.6	30-130			
Fluoranthene	0.0998	0.000394	"	0.167	<0.000394	59.7	30-130			

Origins Laboratory, Inc.



The results in this report apply to the samples analyzed in accordance with the chain of custody document. This analytical report must be reproduced in its entirety.

Eagle Environmental Consulting, Inc.
8000 W 44th Ave
Wheat Ridge CO 80033

Martin C Eckert III
Project Number: [none]
Project: Noble - Becca #D 3-11

PAH by 8270D SIM - Quality Control
Waypoint Analytical, Inc.

Analyte	Result	Reporting Limit	Units	Spike Level	Source Result	%REC	%REC Limits	RPD	RPD Limit	Notes
---------	--------	-----------------	-------	-------------	---------------	------	-------------	-----	-----------	-------

Batch L611478 - 3550B

MS (L 97924-MS-L611478)		Source: 97924			Prepared: 04/19/2022 Analyzed: 04/21/2022					
Acenaphthene	0.0928	0.000304	mg/Kg	0.167	<0.000304	55.5	30-130			
Anthracene	0.0957	0.000334	"	0.167	<0.000334	57.3	30-130			
Benzo(a)anthracene	0.104	0.000493	"	0.167	<0.000493	62.2	30-130			
Benzo(a)pyrene	0.0998	0.000468	"	0.167	<0.000468	59.7	30-130			
Chrysene	0.103	0.000624	"	0.167	<0.000624	61.6	30-130			
Benzo(k)fluoranthene	0.0914	0.000437	"	0.167	<0.000437	54.7	30-130			
Fluorene	0.0967	0.000286	"	0.167	<0.000286	57.9	30-130			
Benzo(b)fluoranthene	0.0784	0.000585	"	0.167	<0.000585	46.9	30-130			
Surrogate: Nitrobenzene-d5	68.4		"	0.333	188	68.4	29-110			
Surrogate: 2-Fluorobiphenyl	60.6		"	0.333	167	60.6	33-115			
Surrogate: 4-Terphenyl-d14	77.4		"	0.333	213	77.4	33-122			

LCS (LCS-L611478)		Prepared: 04/19/2022 Analyzed: 04/21/2022								
Pyrene	0.102	0.000643	mg/Kg	0.167		61	30-130			
Dibenz(a,h)anthracene	0.114	0.000614	"	0.167		68.2	30-130			
Fluoranthene	0.102	0.000394	"	0.167		61	30-130			
Fluorene	0.0984	0.000286	"	0.167		58.9	30-130			
Indeno(1,2,3-cd)pyrene	0.109	0.000627	"	0.167		65.2	30-130			
Chrysene	0.102	0.000624	"	0.167		61	30-130			
Anthracene	0.0941	0.000334	"	0.167		56.3	30-130			
Naphthalene	0.09	0.000484	"	0.167		53.8	30-130			
1-Methylnaphthalene	0.0903	0.000364	"	0.167		54	30-130			
Benzo(b)fluoranthene	0.0788	0.000585	"	0.167		47.1	30-130			
Benzo(a)anthracene	0.103	0.000493	"	0.167		61.6	30-130			
Acenaphthene	0.0942	0.000304	"	0.167		56.4	30-130			
2-Methylnaphthalene	0.0901	0.000645	"	0.167		53.9	30-130			
Benzo(a)pyrene	0.0975	0.000468	"	0.167		58.3	30-130			

Origins Laboratory, Inc.



The results in this report apply to the samples analyzed in accordance with the chain of custody document. This analytical report must be reproduced in its entirety.

Eagle Environmental Consulting, Inc.
8000 W 44th Ave
Wheat Ridge CO 80033

Martin C Eckert III
Project Number: [none]
Project: Noble - Becca #D 3-11

PAH by 8270D SIM - Quality Control
Waypoint Analytical, Inc.

Analyte	Result	Reporting Limit	Units	Spike Level	Source Result	%REC	%REC Limits	RPD	RPD Limit	Notes
Batch L611478 - 3550B										
LCS (LCS-L611478)					Prepared: 04/19/2022 Analyzed: 04/21/2022					
Benzo(k)fluoranthene	0.103	0.000437	mg/Kg	0.167		61.6	30-130			
Surrogate: Nitrobenzene-d5	71.1		"	0.333		71.1	29-110			
Surrogate: 4-Terphenyl-d14	83.1		"	0.333		83.1	33-122			
Surrogate: 2-Fluorobiphenyl	64.2		"	0.333		64.2	33-115			
LRB (LRB-L611478)					Prepared: 04/19/2022 Analyzed: 04/21/2022					
Chrysene	ND	0.00067	mg/Kg				-			
Dibenz(a,h)anthracene	ND	0.00067	"				-			
Fluoranthene	ND	0.00067	"				-			
Fluorene	ND	0.00067	"				-			
Benzo(k)fluoranthene	ND	0.00067	"				-			
Naphthalene	ND	0.00067	"				-			
Indeno(1,2,3-cd)pyrene	ND	0.00067	"				-			
Benzo(b)fluoranthene	ND	0.00067	"				-			
Benzo(a)pyrene	ND	0.00067	"				-			
Benzo(a)anthracene	ND	0.00067	"				-			
Acenaphthene	ND	0.00067	"				-			
2-Methylnaphthalene	ND	0.00067	"				-			
1-Methylnaphthalene	ND	0.00067	"				-			
Pyrene	ND	0.00067	"				-			
Anthracene	ND	0.00067	"				-			
Surrogate: 4-Terphenyl-d14	71.7		"	0.333		71.7	33-122			
Surrogate: Nitrobenzene-d5	58.8		"	0.333		58.8	29-110			
Surrogate: 2-Fluorobiphenyl	54.3		"	0.333		54.3	33-115			

Origins Laboratory, Inc.



The results in this report apply to the samples analyzed in accordance with the chain of custody document. This analytical report must be reproduced in its entirety.

Eagle Environmental Consulting, Inc.

8000 W 44th Ave

Wheat Ridge CO 80033

Martin C Eckert III

Project Number: [none]

Project: Noble - Becca #D 3-11

Notes and Definitions

U Sample is Non-Detect.

J Estimated Value. Analyte below reported quantitation limit.

* QC Failure

ND Analyte NOT DETECTED at or above the reporting limit

RPD Relative Percent Difference

All soil results are reported on a wet weight basis.

Origins Laboratory, Inc.



The results in this report apply to the samples analyzed in accordance with the chain of custody document. This analytical report must be reproduced in its entirety.



May 23, 2022

Eagle Environmental Consulting, Inc.

Martin C Eckert III

8000 W 44th Ave

Wheat Ridge CO 80033

Project Name - Noble - Becca #D 3-11

Project Number - [none]

Attached are your analytical results for Noble - Becca #D 3-11 received by Origins Laboratory, Inc. May 11, 2022. This project is associated with Origins project number Y205298-01.

The analytical results in the following report were analyzed under the guidelines of EPA Methods. These methods are identified as follows; "SW" are defined in SW-846, "EPA" are defined in 40CFR part 136 and "SM" are defined in the most current revision of Standard Methods For the Examination of Water and Wastewater.

The analytical results apply specifically to the samples and analyses specified per the attached Chain of Custody. As such, this report shall not be reproduced except in full, without the written approval of Origin's laboratory.

Unless otherwise noted, the analytical results for all soil samples are reported on a wet weight basis. All analytical analyses were performed under NELAP guidelines unless noted by a data qualifier.

Any holding time exceedances, deviations from the method specifications or deviations from Origins Laboratory's Standard Operating Procedures are outlined in the case narrative.

Thank you for selecting Origins for your analytical needs. Please contact us with any questions concerning this report, or if we can help with anything at all.

Origins Laboratory, Inc.
303.433.1322
o-squad@oelabinc.com



1725 Elk Place, Denver, CO 80211 | Phone: 303.433.1322 | Fax: 303.265.9645

Eagle Environmental Consulting, Inc.

8000 W 44th Ave

Wheat Ridge CO 80033

Martin C Eckert III

Project Number: [none]

Project: Noble - Becca #D 3-11

CROSS REFERENCE REPORT

Sample ID	Laboratory ID	Matrix	Date Sampled	Date Received
Background-01@3'	Y205298-01	Soil	April 15, 2022 10:12	05/11/2022 16:17

Origins Laboratory, Inc.



The results in this report apply to the samples analyzed in accordance with the chain of custody document. This analytical report must be reproduced in its entirety.

Eagle Environmental Consulting, Inc.
8000 W 44th Ave
Wheat Ridge CO 80033

Martin C Eckert III
Project Number: [none]
Project: Noble - Becca #D 3-11

Origins Laboratory

Sample Receipt Checklist

F-012207-01-R1
Effective Date: 01/09/12

Origins Work Order: Y205298

Client: Eagle

Client Project ID: Becca D 3-11

Checklist Completed by: SG

Date/time completed: 5/12/22

Shipped Via: HD
(UPS, FedEx, Hand Delivered, Pick-up, etc.)

Airbill #: N/A

Matrix(s) Received: (Check all that apply): ☒ Soil/Solid ☐ Water ☐ Other: _____

Cooler Number/Temperature: 1 / 2.5 °C 1 °C 1 °C (Describe) °C

Thermometer ID: T004

Requirement Description	Yes	No	N/A	Comments (if any)
If samples require cooling, was the temperature between 0°C to ≤ 5°C ⁽¹⁾ ?	<input checked="" type="checkbox"/>	<input type="checkbox"/>	<input type="checkbox"/>	
Is there ice present (document if blue ice is used)	<input checked="" type="checkbox"/>	<input type="checkbox"/>	<input type="checkbox"/>	
Are custody seals present on cooler? (If so, document in comments if they are signed and dated, broken or intact)	<input checked="" type="checkbox"/>	<input type="checkbox"/>	<input type="checkbox"/>	
Are custody seals present on each sample container? (If so, document in comments if they are signed and dated, broken or intact)	<input checked="" type="checkbox"/>	<input type="checkbox"/>	<input type="checkbox"/>	
Were all samples received intact ⁽¹⁾ ?	<input checked="" type="checkbox"/>	<input type="checkbox"/>	<input type="checkbox"/>	
Was adequate sample volume provided ⁽¹⁾ ?	<input checked="" type="checkbox"/>	<input type="checkbox"/>	<input type="checkbox"/>	
Are short holding time analytes or samples with HTs due within 48 hours present ⁽¹⁾ ?	<input checked="" type="checkbox"/>	<input type="checkbox"/>	<input type="checkbox"/>	
Is a chain-of-custody (COC) present and filled out completely ⁽¹⁾ ?	<input checked="" type="checkbox"/>	<input type="checkbox"/>	<input type="checkbox"/>	
Does the COC agree with the number and type of sample bottles received ⁽¹⁾ ?	<input checked="" type="checkbox"/>	<input type="checkbox"/>	<input type="checkbox"/>	
Do the sample IDs on the bottle labels match the COC ⁽¹⁾ ?	<input checked="" type="checkbox"/>	<input type="checkbox"/>	<input type="checkbox"/>	
Is the COC properly relinquished by the client with date and time recorded ⁽¹⁾ ?	<input checked="" type="checkbox"/>	<input type="checkbox"/>	<input type="checkbox"/>	
For volatiles in water – is there headspace (> ¼ inch bubble) present? If yes, contact client and note in narrative.	<input checked="" type="checkbox"/>	<input type="checkbox"/>	<input type="checkbox"/>	
Are samples preserved that require preservation and was it checked ⁽¹⁾ ? (note ID of confirmation instrument used in comments) / (preservation is not confirmed for subcontracted analyses in order to insure sample integrity)/(pH < 2 for samples preserved with HNO ₃ , HCL, H ₂ SO ₄) / (pH > 10 for samples preserved with NaAsO ₂ +NaOH, ZnAc+NaOH)	<input checked="" type="checkbox"/>	<input type="checkbox"/>	<input type="checkbox"/>	
Additional Comments (if any):				

⁽¹⁾If NO, then contact the client before proceeding with analysis and note date/time and person contacted as well as the corrective action to in the additional comments (above) and the case narrative.

Reviewed by (Project Manager) ME

Date/Time Reviewed 5/13/22

Origins Laboratory, Inc.

J. Bynon

The results in this report apply to the samples analyzed in accordance with the chain of custody document. This analytical report must be reproduced in its entirety.

Eagle Environmental Consulting, Inc.
8000 W 44th Ave
Wheat Ridge CO 80033

Martin C Eckert III
Project Number: [none]
Project: Noble - Becca #D 3-11

Background-01@3'

4/15/2022 10:12:00AM

Analyte	Result	Min Detection Limit	Reporting Limit	Units	Dilution	Batch	Prepared	Analyzed	Notes
---------	--------	------------------------	--------------------	-------	----------	-------	----------	----------	-------

Waypoint Analytical, LLC.
Y205298-01 (Soil)

Total Metals by 6020B

Arsenic	3.2	0.0855	0.25	mg/Kg	5	L616412	05/16/2022	05/21/2022	
Barium	109	0.042	0.25	"	"	"	"	"	
Lead	6.1	0.031	0.25	"	"	"	"	"	
Selenium	0.279	0.103	0.25	"	"	"	"	"	

Origins Laboratory, Inc.



The results in this report apply to the samples analyzed in accordance with the chain of custody document. This analytical report must be reproduced in its entirety.

Eagle Environmental Consulting, Inc.
8000 W 44th Ave
Wheat Ridge CO 80033

Martin C Eckert III
Project Number: [none]
Project: Noble - Becca #D 3-11

Total Metals by 6020B - Quality Control Waypoint Analytical, LLC.

Analyte	Result	Reporting Limit	Units	Spike Level	Source Result	%REC	%REC Limits	RPD	RPD Limit	Notes
Batch L616412 - 3050B										
MSD (L 92000-MSD-L616412)			Source: 92000		Prepared: 05/16/2022 Analyzed: 05/21/2022					
Barium	69.4	0.042	mg/Kg	4.66	38.7	659	75-125	48.7	80	*
Lead	5.19	0.031	"	2.33	3.07	91	75-125	4.3	80	
Selenium	4.17	0.103	"	4.66	0.16	86	75-125	1.1	80	
Arsenic	3.52	0.0855	"	2.33	1.49	87	75-125	4.4	80	
MS (L 92000-MS-L616412)			Source: 92000		Prepared: 05/16/2022 Analyzed: 05/21/2022					
Selenium	4.22	0.103	mg/Kg	4.76	0.16	85	75-125			
Arsenic	3.68	0.0855	"	2.38	1.49	92	75-125			
Barium	42.2	0.042	"	4.76	38.7	74	75-125			*
Lead	4.97	0.031	"	2.38	3.07	80	75-125			
LCS (LCS-L616412)			Prepared: 05/16/2022 Analyzed: 05/21/2022							
Barium	5.12	0.042	mg/Kg	5		102	80-120			
Lead	2.36	0.031	"	2.5		94	80-120			
Selenium	4.64	0.103	"	5		93	80-120			
Arsenic	2.36	0.0855	"	2.5		94	80-120			
LRB (LRB-L616412)			Prepared: 05/16/2022 Analyzed: 05/21/2022							
Selenium	ND	0.25	mg/Kg				-			
Arsenic	ND	0.25	"				-			
Barium	0.0442	0.25	"				-			J
Lead	ND	0.25	"				-			

Origins Laboratory, Inc.



The results in this report apply to the samples analyzed in accordance with the chain of custody document. This analytical report must be reproduced in its entirety.

Eagle Environmental Consulting, Inc.

8000 W 44th Ave

Wheat Ridge CO 80033

Martin C Eckert III

Project Number: [none]

Project: Noble - Becca #D 3-11

Notes and Definitions

J Estimated Value. Analyte below reported quantitation limit.

* QC Failure

ND Analyte NOT DETECTED at or above the reporting limit

RPD Relative Percent Difference

All soil results are reported on a wet weight basis.

Origins Laboratory, Inc.



The results in this report apply to the samples analyzed in accordance with the chain of custody document. This analytical report must be reproduced in its entirety.



August 29, 2022

Eagle Environmental Consulting, Inc.

Martin C Eckert III

8000 W 44th Ave

Wheat Ridge CO 80033

Project Name - Noble - Becca #D 3-11

Project Number - [none]

Attached are your analytical results for Noble - Becca #D 3-11 received by Origins Laboratory, Inc. May 24, 2022. This project is associated with Origins project number Y205619-01.

The analytical results in the following report were analyzed under the guidelines of EPA Methods. These methods are identified as follows; "SW" are defined in SW-846, "EPA" are defined in 40CFR part 136 and "SM" are defined in the most current revision of Standard Methods For the Examination of Water and Wastewater.

The analytical results apply specifically to the samples and analyses specified per the attached Chain of Custody. As such, this report shall not be reproduced except in full, without the written approval of Origin's laboratory.

Unless otherwise noted, the analytical results for all soil samples are reported on a wet weight basis. All analytical analyses were performed under NELAP guidelines unless noted by a data qualifier.

Any holding time exceedances, deviations from the method specifications or deviations from Origins Laboratory's Standard Operating Procedures are outlined in the case narrative.

Thank you for selecting Origins for your analytical needs. Please contact us with any questions concerning this report, or if we can help with anything at all.

Origins Laboratory, Inc.
303.433.1322
o-squad@oelabinc.com



1725 Elk Place, Denver, CO 80211 | Phone: 303.433.1322 | Fax: 303.265.9645

Eagle Environmental Consulting, Inc.

8000 W 44th Ave

Wheat Ridge CO 80033

Martin C Eckert III

Project Number: [none]

Project: Noble - Becca #D 3-11

CROSS REFERENCE REPORT

Sample ID	Laboratory ID	Matrix	Date Sampled	Date Received
FL-SS-01@4'	Y205619-01	Soil	May 24, 2022 12:45	05/24/2022 15:55

Origins Laboratory, Inc.



The results in this report apply to the samples analyzed in accordance with the chain of custody document. This analytical report must be reproduced in its entirety.

Eagle Environmental Consulting, Inc.
8000 W 44th Ave
Wheat Ridge CO 80033

Martin C Eckert III
Project Number: [none]
Project: Noble - Becca #D 3-11

Origins Laboratory

Sample Receipt Checklist

F-012207-01-R1
Effective Date: 01/09/12

Origins Work Order: Y205619

Client: Eagle

Client Project ID: Becca D 3-11

Checklist Completed by: SG

Shipped Via: HD

(UPS, FedEx, Hand Delivered, Pick-up, etc.)

Date/time completed: 5/25/22

Airbill #: N/A

Matrix(s) Received: (Check all that apply): X Soil/Solid

Water

Other:

Cooler Number/Temperature: 1 / 1.7 °C

Thermometer ID: T004

Requirement Description	Yes	No	N/A	Comments (if any)
If samples require cooling, was the temperature between 0°C to ≤ 6°C ⁽¹⁾ ?	<input checked="" type="checkbox"/>			
Is there ice present (document if blue ice is used)	<input checked="" type="checkbox"/>			
Are custody seals present on cooler? (if so, document in comments if they are signed and dated, broken or intact)		<input checked="" type="checkbox"/>		
Are custody seals present on each sample container? (if so, document in comments if they are signed and dated, broken or intact)		<input checked="" type="checkbox"/>		
Were all samples received intact ⁽¹⁾ ?	<input checked="" type="checkbox"/>			
Was adequate sample volume provided ⁽¹⁾ ?	<input checked="" type="checkbox"/>			
Are short holding time analytes or samples with HTs due within 48 hours present ⁽¹⁾ ?		<input checked="" type="checkbox"/>		
Is a chain-of-custody (COC) present and filled out completely ⁽¹⁾ ?	<input checked="" type="checkbox"/>			
Does the COC agree with the number and type of sample bottles received ⁽¹⁾ ?	<input checked="" type="checkbox"/>			
Do the sample IDs on the bottle labels match the COC ⁽¹⁾ ?	<input checked="" type="checkbox"/>			
Is the COC properly relinquished by the client with date and time recorded ⁽¹⁾ ?	<input checked="" type="checkbox"/>			
For volatiles in water – is there headspace (> ¼ inch bubble) present? If yes, contact client and note in narrative.			<input checked="" type="checkbox"/>	
Are samples preserved that require preservation and was it checked ⁽¹⁾ ? (note ID of confirmation instrument used in comments) / (preservation is not confirmed for subcontracted analyses in order to insure sample integrity)(pH < 2 for samples preserved with HNO ₃ , HCL, H ₂ SO ₄) / (pH > 10 for samples preserved with NaAsO ₂ +NaOH, ZnAc+NaOH)			<input checked="" type="checkbox"/>	
Additional Comments (if any):				

⁽¹⁾ If NO, then contact the client before proceeding with analysis and note date/time and person contacted as well as the corrective action to in the additional comments (above) and the case narrative.

Reviewed by JB (Project Manager)

5-26-22
Date/Time Reviewed

Origins Laboratory, Inc.

J. Bynon

The results in this report apply to the samples analyzed in accordance with the chain of custody document. This analytical report must be reproduced in its entirety.

Eagle Environmental Consulting, Inc.
8000 W 44th Ave
Wheat Ridge CO 80033

Martin C Eckert III
Project Number: [none]
Project: Noble - Becca #D 3-11

FL-SS-01@4'

5/24/2022 12:45:00PM

Analyte	Result	Min Detection Limit	Reporting Limit	Units	Dilution	Batch	Prepared	Analyzed	Notes
---------	--------	---------------------	-----------------	-------	----------	-------	----------	----------	-------

Origins Laboratory, Inc.
Y205619-01 (Soil)

Boron (DTPA Sorbitol)

Boron	3.95	0.0997	mg/L	1	B2E2517	05/25/2022	05/26/2022	
-------	------	--------	------	---	---------	------------	------------	--

DRO/ORO by EPA 8015D

Diesel (C10-C28)	ND	25.0	mg/kg	1	B2E2507	05/25/2022	05/26/2022	U
Residual Range Organics (C28-C40)	ND	100	"	"	"	"	"	U

Surrogate: o-Terphenyl	102 %	50-150			"	"	"	
------------------------	-------	--------	--	--	---	---	---	--

GBTEX+TMBs by 8260D

1,2,4-Trimethylbenzene	ND	0.00200	mg/kg	1	B2E2511	05/25/2022	05/26/2022	U
1,3,5-Trimethylbenzene	ND	0.00200	"	"	"	"	"	U
Benzene	ND	0.00200	"	"	"	"	"	U
Ethylbenzene	ND	0.00200	"	"	"	"	"	U
Toluene	ND	0.00200	"	"	"	"	"	U
Xylenes, total	ND	0.00200	"	"	"	"	"	U
Gasoline Range Hydrocarbons	ND	0.200	"	"	"	"	"	U

Surrogate: 1,2-Dichloroethane-d4	106 %	70-130			"	"	"	
----------------------------------	-------	--------	--	--	---	---	---	--

Origins Laboratory, Inc.



The results in this report apply to the samples analyzed in accordance with the chain of custody document. This analytical report must be reproduced in its entirety.

Eagle Environmental Consulting, Inc.
8000 W 44th Ave
Wheat Ridge CO 80033

Martin C Eckert III
Project Number: [none]
Project: Noble - Becca #D 3-11

FL-SS-01@4'

5/24/2022 12:45:00PM

Analyte	Result	Min Detection Limit	Reporting Limit	Units	Dilution	Batch	Prepared	Analyzed	Notes
---------	--------	---------------------	-----------------	-------	----------	-------	----------	----------	-------

Origins Laboratory, Inc.
Y205619-01 (Soil)

GBTEX+TMBs by 8260D

Surrogate: Toluene-d8	99.1 %	70-130	B2E25 11	05/25/2022	05/26/2022
Surrogate: 4-Bromofluorobenzene	96.0 %	70-130	"	"	"

Metals by Saturated Paste by EPA 6010

Calcium	0.873	0.499	meq/L	10	[CALC]	05/25/2022	05/26/2022
Magnesium	ND	0.823	"	"	"	"	"
Sodium	ND	0.435	"	"	"	"	"

PAH by 8270D SIM

1-Methylnaphthalene	ND	0.000364	0.00067	mg/Kg	1	L618759	05/31/2022	05/31/2022
2-Methylnaphthalene	ND	0.000645	0.00067	"	"	"	"	"
Acenaphthene	ND	0.000304	0.00067	"	"	"	"	"
Anthracene	ND	0.000334	0.00067	"	"	"	"	"
Benzo(a)anthracene	ND	0.000493	0.00067	"	"	"	"	"
Benzo(a)pyrene	ND	0.000468	0.00067	"	"	"	"	"
Benzo(b)fluoranthene	ND	0.000585	0.00067	"	"	"	"	"
Benzo(k)fluoranthene	ND	0.000437	0.00067	"	"	"	"	"
Chrysene	ND	0.000624	0.00067	"	"	"	"	"
Dibenz(a,h)anthracene	ND	0.000614	0.00067	"	"	"	"	"
Fluoranthene	ND	0.000394	0.00067	"	"	"	"	"

Origins Laboratory, Inc.



The results in this report apply to the samples analyzed in accordance with the chain of custody document. This analytical report must be reproduced in its entirety.

Eagle Environmental Consulting, Inc.
8000 W 44th Ave
Wheat Ridge CO 80033

Martin C Eckert III
Project Number: [none]
Project: Noble - Becca #D 3-11

FL-SS-01@4'

5/24/2022 12:45:00PM

Analyte	Result	Min Detection Limit	Reporting Limit	Units	Dilution	Batch	Prepared	Analyzed	Notes
---------	--------	---------------------	-----------------	-------	----------	-------	----------	----------	-------

Waypoint Analytical, Inc.
Y205619-01 (Soil)

PAH by 8270D SIM

Fluorene	ND	0.000286	0.00067	mg/Kg	1	L618759	05/31/2022	05/31/2022
Indeno(1,2,3-cd)pyrene	ND	0.000627	0.00067	"	"	"	"	"
Naphthalene	ND	0.000484	0.00067	"	"	"	"	"
Pyrene	ND	0.000643	0.00067	"	"	"	"	"

Surrogate: 2-Fluorobiphenyl	70.3 %	33-115	"	"	"
Surrogate: 4-Terphenyl-d14	100 %	33-122	"	"	"
Surrogate: Nitrobenzene-d5	61.2 %	29-110	"	"	"

pH in Soil by 9045D

pH	8.43	pH Units	1	B2E2518	05/25/2022	05/26/2022
----	------	----------	---	---------	------------	------------

SAR by 20B Saturated Paste

SAR	0.221	SAR	1	B2E2516	05/25/2022	05/26/2022
-----	-------	-----	---	---------	------------	------------

Specific Conductance Mod. 9050A

Specific Conductance (EC)	0.154	0.00500	mmhos/cm	1	B2E2518	05/25/2022	05/26/2022
---------------------------	-------	---------	----------	---	---------	------------	------------

Origins Laboratory, Inc.



The results in this report apply to the samples analyzed in accordance with the chain of custody document. This analytical report must be reproduced in its entirety.

Eagle Environmental Consulting, Inc.
8000 W 44th Ave
Wheat Ridge CO 80033

Martin C Eckert III
Project Number: [none]
Project: Noble - Becca #D 3-11

Extractable Petroleum Hydrocarbons by 8015D - Quality Control
Origins Laboratory, Inc.

Analyte	Result	Reporting Limit	Units	Spike Level	Source Result	%REC	%REC Limits	RPD	RPD Limit	Notes
Batch B2E2507 - EPA 3550B										
Blank (B2E2507-BLK1)					Prepared: 05/25/2022 Analyzed: 05/26/2022					
Diesel (C10-C28)	ND	25.0	mg/kg							U
Residual Range Organics (C28-C40)	ND	100	"							U
Surrogate: o-Terphenyl	23		"	24.9		92.6	50-150			

Origins Laboratory, Inc.



The results in this report apply to the samples analyzed in accordance with the chain of custody document. This analytical report must be reproduced in its entirety.

Eagle Environmental Consulting, Inc.
8000 W 44th Ave
Wheat Ridge CO 80033

Martin C Eckert III
Project Number: [none]
Project: Noble - Becca #D 3-11

Extractable Petroleum Hydrocarbons by 8015D - Quality Control
Origins Laboratory, Inc.

Analyte	Result	Reporting Limit	Units	Spike Level	Source Result	%REC	%REC Limits	RPD	RPD Limit	Notes
---------	--------	-----------------	-------	-------------	---------------	------	-------------	-----	-----------	-------

Batch B2E2507 - EPA 3550B

LCS (B2E2507-BS1)

Prepared: 05/25/2022 Analyzed: 05/26/2022

Diesel (C10-C28)	1150	50.0	mg/kg	1000		115	70-130			
Residual Range Organics (C28-C40)	1100	200	"	1000		110	70-130			
Surrogate: o-Terphenyl	54		"	49.8		108	50-150			

Origins Laboratory, Inc.



The results in this report apply to the samples analyzed in accordance with the chain of custody document. This analytical report must be reproduced in its entirety.

Eagle Environmental Consulting, Inc.
8000 W 44th Ave
Wheat Ridge CO 80033

Martin C Eckert III
Project Number: [none]
Project: Noble - Becca #D 3-11

Extractable Petroleum Hydrocarbons by 8015D - Quality Control
Origins Laboratory, Inc.

Analyte	Result	Reporting Limit	Units	Spike Level	Source Result	%REC	%REC Limits	RPD	RPD Limit	Notes
---------	--------	-----------------	-------	-------------	---------------	------	-------------	-----	-----------	-------

Batch B2E2507 - EPA 3550B

Matrix Spike (B2E2507-MS1)		Source: Y205601-01			Prepared: 05/25/2022 Analyzed: 05/26/2022					
Diesel (C10-C28)	1060	50.0	mg/kg	1000	ND	106	70-130			
Residual Range Organics (C28-C40)	1090	200	"	1000	ND	109	70-130			
Surrogate: o-Terphenyl	59		"	49.8		118	50-150			

Origins Laboratory, Inc.



The results in this report apply to the samples analyzed in accordance with the chain of custody document. This analytical report must be reproduced in its entirety.

Eagle Environmental Consulting, Inc.
8000 W 44th Ave
Wheat Ridge CO 80033

Martin C Eckert III
Project Number: [none]
Project: Noble - Becca #D 3-11

Extractable Petroleum Hydrocarbons by 8015D - Quality Control
Origins Laboratory, Inc.

Analyte	Result	Reporting Limit	Units	Spike Level	Source Result	%REC	%REC Limits	RPD	RPD Limit	Notes
---------	--------	-----------------	-------	-------------	---------------	------	-------------	-----	-----------	-------

Batch B2E2507 - EPA 3550B

Matrix Spike Dup (B2E2507-MSD1)		Source: Y205601-01			Prepared: 05/25/2022 Analyzed: 05/26/2022					
Diesel (C10-C28)	1160	50.0	mg/kg	1000	ND	116	70-130	9.35	35	
Residual Range Organics (C28-C40)	1020	200	"	1000	ND	102	70-130	6.05	35	
Surrogate: o-Terphenyl	56		"	49.8		113	50-150			

Origins Laboratory, Inc.



The results in this report apply to the samples analyzed in accordance with the chain of custody document. This analytical report must be reproduced in its entirety.

Eagle Environmental Consulting, Inc.
8000 W 44th Ave
Wheat Ridge CO 80033

Martin C Eckert III
Project Number: [none]
Project: Noble - Becca #D 3-11

Extractable Petroleum Hydrocarbons by 8015D - Quality Control

Origins Laboratory, Inc.

Analyte	Result	Reporting Limit	Units	Spike Level	Source Result	%REC	%REC Limits	RPD	RPD Limit	Notes
Batch B2E2511 - EPA 5030 (soil)										
Blank (B2E2511-BLK1)					Prepared: 05/25/2022 Analyzed: 05/25/2022					
1,2,4-Trimethylbenzene	ND	0.00200	mg/kg							U
1,3,5-Trimethylbenzene	ND	0.00200	"							U
Benzene	ND	0.00200	"							U
Ethylbenzene	ND	0.00200	"							U
Naphthalene	ND	0.0100	"							U
Toluene	ND	0.00200	"							U
Xylenes, total	ND	0.00200	"							U
Gasoline Range Hydrocarbons	ND	0.200	"							U
Surrogate: 1,2-Dichloroethane-d4	0.12		"	0.125		99.9	70-130			
Surrogate: Toluene-d8	0.13		"	0.125		101	70-130			
Surrogate: 4-Bromofluorobenzene	0.12		"	0.125		95.4	70-130			

Origins Laboratory, Inc.



The results in this report apply to the samples analyzed in accordance with the chain of custody document. This analytical report must be reproduced in its entirety.

Eagle Environmental Consulting, Inc.
8000 W 44th Ave
Wheat Ridge CO 80033

Martin C Eckert III
Project Number: [none]
Project: Noble - Becca #D 3-11

Volatile Organic Compounds by GC/MS SW846 8260D - Quality Control
Origins Laboratory, Inc.

Analyte	Result	Reporting Limit	Units	Spike Level	Source Result	%REC	%REC Limits	RPD	RPD Limit	Notes
---------	--------	-----------------	-------	-------------	---------------	------	-------------	-----	-----------	-------

Batch B2E2511 - EPA 5030 (soil)

LCS (B2E2511-BS1)

Prepared: 05/25/2022 Analyzed: 05/25/2022

1,2,4-Trimethylbenzene	0.106	0.00200	mg/kg	0.100		106	70-130			
1,3,5-Trimethylbenzene	0.106	0.00200	"	0.100		106	70-130			
Benzene	0.0969	0.00200	"	0.100		96.9	70-130			
Ethylbenzene	0.106	0.00200	"	0.100		106	70-130			
Naphthalene	0.110	0.0100	"	0.100		110	70-130			
Toluene	0.101	0.00200	"	0.100		101	70-130			
o-Xylene	0.105	0.00200	"	0.100		105	70-130			
m,p-Xylene	0.218	0.00400	"	0.200		109	70-130			
Surrogate: 1,2-Dichloroethane-d4	0.12		"	0.125		94.0	70-130			
Surrogate: Toluene-d8	0.12		"	0.125		96.6	70-130			
Surrogate: 4-Bromofluorobenzene	0.13		"	0.125		105	70-130			

Origins Laboratory, Inc.



The results in this report apply to the samples analyzed in accordance with the chain of custody document. This analytical report must be reproduced in its entirety.

Eagle Environmental Consulting, Inc.
8000 W 44th Ave
Wheat Ridge CO 80033

Martin C Eckert III
Project Number: [none]
Project: Noble - Becca #D 3-11

Volatile Organic Compounds by GC/MS SW846 8260D - Quality Control
Origins Laboratory, Inc.

Analyte	Result	Reporting Limit	Units	Spike Level	Source Result	%REC	%REC Limits	RPD	RPD Limit	Notes
Batch B2E2511 - EPA 5030 (soil)										
Matrix Spike (B2E2511-MS1)		Source: Y205601-01			Prepared: 05/25/2022 Analyzed: 05/25/2022					
1,2,4-Trimethylbenzene	0.0769	0.00200	mg/kg	0.100	ND	76.9	70-130			
1,3,5-Trimethylbenzene	0.0759	0.00200	"	0.100	ND	75.9	70-130			
Benzene	0.0812	0.00200	"	0.100	ND	81.2	70-130			
Ethylbenzene	0.0853	0.00200	"	0.100	ND	85.3	70-130			
Naphthalene	0.0826	0.0100	"	0.100	ND	82.6	70-130			
Toluene	0.0807	0.00200	"	0.100	ND	80.7	70-130			
o-Xylene	0.0841	0.00200	"	0.100	ND	84.1	70-130			
m,p-Xylene	0.167	0.00400	"	0.200	ND	83.6	70-130			
Surrogate: 1,2-Dichloroethane-d4	0.13		"	0.125		104	70-130			
Surrogate: Toluene-d8	0.12		"	0.125		93.9	70-130			
Surrogate: 4-Bromofluorobenzene	0.14		"	0.125		109	70-130			

Origins Laboratory, Inc.



The results in this report apply to the samples analyzed in accordance with the chain of custody document. This analytical report must be reproduced in its entirety.

Eagle Environmental Consulting, Inc.
8000 W 44th Ave
Wheat Ridge CO 80033

Martin C Eckert III
Project Number: [none]
Project: Noble - Becca #D 3-11

Volatile Organic Compounds by GC/MS SW846 8260D - Quality Control
Origins Laboratory, Inc.

Analyte	Result	Reporting Limit	Units	Spike Level	Source Result	%REC	%REC Limits	RPD	RPD Limit	Notes
Batch B2E2511 - EPA 5030 (soil)										
Matrix Spike Dup (B2E2511-MSD1)	Source: Y205601-01				Prepared: 05/25/2022 Analyzed: 05/25/2022					
1,2,4-Trimethylbenzene	0.0597	0.00200	mg/kg	0.100	ND	59.7	70-130	25.2	20	QM-07
1,3,5-Trimethylbenzene	0.0576	0.00200	"	0.100	ND	57.6	70-130	27.4	20	QM-07
Benzene	0.0815	0.00200	"	0.100	ND	81.5	70-130	0.418	20	
Ethylbenzene	0.0753	0.00200	"	0.100	ND	75.3	70-130	12.4	20	
Naphthalene	0.0634	0.0100	"	0.100	ND	63.4	70-130	26.3	20	QM-07
Toluene	0.0802	0.00200	"	0.100	ND	80.2	70-130	0.696	20	
o-Xylene	0.0741	0.00200	"	0.100	ND	74.1	70-130	12.7	20	
m,p-Xylene	0.147	0.00400	"	0.200	ND	73.5	70-130	12.9	20	
Surrogate: 1,2-Dichloroethane-d4	0.13		"	0.125		102	70-130			
Surrogate: Toluene-d8	0.12		"	0.125		94.3	70-130			
Surrogate: 4-Bromofluorobenzene	0.13		"	0.125		104	70-130			

Origins Laboratory, Inc.



The results in this report apply to the samples analyzed in accordance with the chain of custody document. This analytical report must be reproduced in its entirety.

Eagle Environmental Consulting, Inc.
8000 W 44th Ave
Wheat Ridge CO 80033

Martin C Eckert III
Project Number: [none]
Project: Noble - Becca #D 3-11

Volatile Organic Compounds by GC/MS SW846 8260D - Quality Control
Origins Laboratory, Inc.

Analyte	Result	Reporting Limit	Units	Spike Level	Source Result	%REC	%REC Limits	RPD	RPD Limit	Notes
---------	--------	-----------------	-------	-------------	---------------	------	-------------	-----	-----------	-------

Saturated Paste - Quality Control
Origins Laboratory, Inc.

Analyte	Result	Reporting Limit	Units	Spike Level	Source Result	%REC	%REC Limits	RPD	RPD Limit	Notes
---------	--------	-----------------	-------	-------------	---------------	------	-------------	-----	-----------	-------

Batch B2E2518 - NO PREP

Blank (B2E2518-BLK1)

Prepared: 05/25/2022 Analyzed: 05/26/2022

Specific Conductance (EC)	0.00100	0.00500	mmhos/cm
pH	0.00		pH Units

Duplicate (B2E2518-DUP1)

Source: Y205617-20

Prepared: 05/25/2022 Analyzed: 05/26/2022

pH	8.27		pH Units	8.28		0.121	25
Specific Conductance (EC)	0.688	0.00500	mmhos/cm	0.625		9.51	25

Origins Laboratory, Inc.



The results in this report apply to the samples analyzed in accordance with the chain of custody document. This analytical report must be reproduced in its entirety.

Eagle Environmental Consulting, Inc.
8000 W 44th Ave
Wheat Ridge CO 80033

Martin C Eckert III
Project Number: [none]
Project: Noble - Becca #D 3-11

PAH by 8270D SIM - Quality Control
Waypoint Analytical, Inc.

Analyte	Result	Reporting Limit	Units	Spike Level	Source Result	%REC	%REC Limits	RPD	RPD Limit	Notes
---------	--------	-----------------	-------	-------------	---------------	------	-------------	-----	-----------	-------

Batch L618759 - 3550B

MSD (L 98233-MSD-L618759)		Source: Y205619-01			Prepared: 05/31/2022 Analyzed: 05/31/2022					
1-Methylnaphthalene	0.0943	0.000364	mg/Kg	0.163	<0.000364	57.8	30-130	8.8	30	
Benzo(a)anthracene	0.116	0.000493	"	0.163	<0.000493	71.1	30-130	5.8	30	
Anthracene	0.126	0.000334	"	0.163	<0.000334	77.3	30-130	5.4	30	
Acenaphthene	0.113	0.000304	"	0.163	<0.000304	69.3	30-130	10	30	
Benzo(k)fluoranthene	0.104	0.000437	"	0.163	<0.000437	63.8	30-130	4.6	30	
2-Methylnaphthalene	0.0937	0.000645	"	0.163	<0.000645	57.4	30-130	9.4	30	
Pyrene	0.143	0.000643	"	0.163	<0.000643	87.7	30-130	0.7	30	
Benzo(a)pyrene	0.119	0.000468	"	0.163	<0.000468	73	30-130	4.1	30	
Naphthalene	0.092	0.000484	"	0.163	<0.000484	56.4	30-130	7.1	30	
Indeno(1,2,3-cd)pyrene	0.114	0.000627	"	0.163	<0.000627	69.9	30-130	34.7	30	
Fluorene	0.112	0.000286	"	0.163	<0.000286	68.7	30-130	6	30	
Fluoranthene	0.142	0.000394	"	0.163	<0.000394	87.1	30-130	0	30	
Dibenz(a,h)anthracene	0.107	0.000614	"	0.163	<0.000614	65.6	30-130	30.1	30	
Chrysene	0.112	0.000624	"	0.163	<0.000624	68.7	30-130	4.3	30	
Benzo(b)fluoranthene	0.102	0.000585	"	0.163	<0.000585	62.5	30-130	14.5	30	
Surrogate: 4-Terphenyl-d14	95.1		"	0.327	331	95.1	33-122			
Surrogate: 2-Fluorobiphenyl	61.4		"	0.327	232	61.4	33-115			
Surrogate: Nitrobenzene-d5	55		"	0.327	202	55	29-110			

MS (L 98233-MS-L618759)		Source: Y205619-01			Prepared: 05/31/2022 Analyzed: 05/31/2022					
Benzo(b)fluoranthene	0.118	0.000585	mg/Kg	0.166	<0.000585	71	30-130			
Dibenz(a,h)anthracene	0.145	0.000614	"	0.166	<0.000614	87.3	30-130			
Pyrene	0.142	0.000643	"	0.166	<0.000643	85.5	30-130			
Naphthalene	0.0988	0.000484	"	0.166	<0.000484	59.5	30-130			
Indeno(1,2,3-cd)pyrene	0.162	0.000627	"	0.166	<0.000627	97.5	30-130			
Fluorene	0.119	0.000286	"	0.166	<0.000286	71.6	30-130			
Fluoranthene	0.142	0.000394	"	0.166	<0.000394	85.5	30-130			

Origins Laboratory, Inc.



The results in this report apply to the samples analyzed in accordance with the chain of custody document. This analytical report must be reproduced in its entirety.

Eagle Environmental Consulting, Inc.
8000 W 44th Ave
Wheat Ridge CO 80033

Martin C Eckert III
Project Number: [none]
Project: Noble - Becca #D 3-11

PAH by 8270D SIM - Quality Control
Waypoint Analytical, Inc.

Analyte	Result	Reporting Limit	Units	Spike Level	Source Result	%REC	%REC Limits	RPD	RPD Limit	Notes
---------	--------	-----------------	-------	-------------	---------------	------	-------------	-----	-----------	-------

Batch L618759 - 3550B

MS (L 98233-MS-L618759)		Source: Y205619-01			Prepared: 05/31/2022 Analyzed: 05/31/2022					
2-Methylnaphthalene	0.103	0.000645	mg/Kg	0.166	<0.000645	62	30-130			
Benzo(a)pyrene	0.124	0.000468	"	0.166	<0.000468	74.6	30-130			
Benzo(a)anthracene	0.123	0.000493	"	0.166	<0.000493	74	30-130			
Anthracene	0.133	0.000334	"	0.166	<0.000334	80.1	30-130			
Acenaphthene	0.125	0.000304	"	0.166	<0.000304	75.3	30-130			
Benzo(k)fluoranthene	0.109	0.000437	"	0.166	<0.000437	65.6	30-130			
1-Methylnaphthalene	0.103	0.000364	"	0.166	<0.000364	62	30-130			
Chrysene	0.117	0.000624	"	0.166	<0.000624	70.4	30-130			
Surrogate: Nitrobenzene-d5	60.7		"	0.331	202	60.7	29-110			
Surrogate: 4-Terphenyl-d14	101		"	0.331	331	101	33-122			
Surrogate: 2-Fluorobiphenyl	70.9		"	0.331	232	70.9	33-115			

LCS (LCS-L618759)

Prepared: 05/31/2022 Analyzed: 05/31/2022

Dibenz(a,h)anthracene	0.104	0.000614	mg/Kg	0.167		62.2	30-130
Fluoranthene	0.143	0.000394	"	0.167		85.6	30-130
Fluorene	0.116	0.000286	"	0.167		69.4	30-130
Indeno(1,2,3-cd)pyrene	0.111	0.000627	"	0.167		66.4	30-130
Naphthalene	0.0942	0.000484	"	0.167		56.4	30-130
Pyrene	0.142	0.000643	"	0.167		85	30-130
Acenaphthene	0.119	0.000304	"	0.167		71.2	30-130
Chrysene	0.115	0.000624	"	0.167		68.8	30-130
Benzo(b)fluoranthene	0.112	0.000585	"	0.167		67	30-130
Benzo(a)pyrene	0.122	0.000468	"	0.167		73	30-130
Anthracene	0.132	0.000334	"	0.167		79	30-130
2-Methylnaphthalene	0.0971	0.000645	"	0.167		58.1	30-130
1-Methylnaphthalene	0.0975	0.000364	"	0.167		58.3	30-130
Benzo(a)anthracene	0.12	0.000493	"	0.167		71.8	30-130

Origins Laboratory, Inc.



The results in this report apply to the samples analyzed in accordance with the chain of custody document. This analytical report must be reproduced in its entirety.

Eagle Environmental Consulting, Inc.
8000 W 44th Ave
Wheat Ridge CO 80033

Martin C Eckert III
Project Number: [none]
Project: Noble - Becca #D 3-11

PAH by 8270D SIM - Quality Control
Waypoint Analytical, Inc.

Analyte	Result	Reporting Limit	Units	Spike Level	Source Result	%REC	%REC Limits	RPD	RPD Limit	Notes
---------	--------	-----------------	-------	-------------	---------------	------	-------------	-----	-----------	-------

Batch L618759 - 3550B

LCS (LCS-L618759)

Prepared: 05/31/2022 Analyzed: 05/31/2022

Benzo(k)fluoranthene	0.101	0.000437	mg/Kg	0.167		60.4	30-130			
Surrogate: Nitrobenzene-d5	65.1		"	0.333		65.1	29-110			
Surrogate: 4-Terphenyl-d14	118		"	0.333		118	33-122			
Surrogate: 2-Fluorobiphenyl	80.1		"	0.333		80.1	33-115			

LRB (LRB-L618759)

Prepared: 05/31/2022 Analyzed: 05/31/2022

Pyrene	ND	0.00067	mg/Kg				-			
Dibenz(a,h)anthracene	ND	0.00067	"				-			
Fluoranthene	ND	0.00067	"				-			
Fluorene	ND	0.00067	"				-			
Indeno(1,2,3-cd)pyrene	ND	0.00067	"				-			
Chrysene	ND	0.00067	"				-			
Acenaphthene	ND	0.00067	"				-			
Naphthalene	ND	0.00067	"				-			
Benzo(k)fluoranthene	ND	0.00067	"				-			
Benzo(b)fluoranthene	ND	0.00067	"				-			
Benzo(a)pyrene	ND	0.00067	"				-			
Anthracene	ND	0.00067	"				-			
2-Methylnaphthalene	ND	0.00067	"				-			
1-Methylnaphthalene	ND	0.00067	"				-			
Benzo(a)anthracene	ND	0.00067	"				-			
Surrogate: Nitrobenzene-d5	60.3		"	0.333		60.3	29-110			
Surrogate: 4-Terphenyl-d14	91.5		"	0.333		91.5	33-122			
Surrogate: 2-Fluorobiphenyl	68.4		"	0.333		68.4	33-115			

Origins Laboratory, Inc.



The results in this report apply to the samples analyzed in accordance with the chain of custody document. This analytical report must be reproduced in its entirety.

Eagle Environmental Consulting, Inc.
8000 W 44th Ave
Wheat Ridge CO 80033

Martin C Eckert III
Project Number: [none]
Project: Noble - Becca #D 3-11

Notes and Definitions

U Sample is Non-Detect.

QM-07 The spike recovery was outside acceptance limits for the MS and/or MSD. The batch was accepted based on acceptable LCS recovery.

ND Analyte NOT DETECTED at or above the reporting limit

RPD Relative Percent Difference

All soil results are reported on a wet weight basis.

Origins Laboratory, Inc.



The results in this report apply to the samples analyzed in accordance with the chain of custody document. This analytical report must be reproduced in its entirety.



June 13, 2022

Eagle Environmental Consulting, Inc.

Martin C Eckert III

8000 W 44th Ave

Wheat Ridge CO 80033

Project Name - Noble - Becca #D 3-11

Project Number - [none]

Attached are your analytical results for Noble - Becca #D 3-11 received by Origins Laboratory, Inc. June 02, 2022. This project is associated with Origins project number Y206098-01.

The analytical results in the following report were analyzed under the guidelines of EPA Methods. These methods are identified as follows; "SW" are defined in SW-846, "EPA" are defined in 40CFR part 136 and "SM" are defined in the most current revision of Standard Methods For the Examination of Water and Wastewater.

The analytical results apply specifically to the samples and analyses specified per the attached Chain of Custody. As such, this report shall not be reproduced except in full, without the written approval of Origin's laboratory.

Unless otherwise noted, the analytical results for all soil samples are reported on a wet weight basis. All analytical analyses were performed under NELAP guidelines unless noted by a data qualifier.

Any holding time exceedances, deviations from the method specifications or deviations from Origins Laboratory's Standard Operating Procedures are outlined in the case narrative.

Thank you for selecting Origins for your analytical needs. Please contact us with any questions concerning this report, or if we can help with anything at all.

Origins Laboratory, Inc.
303.433.1322
o-squad@oelabinc.com



1725 Elk Place, Denver, CO 80211 | Phone: 303.433.1322 | Fax: 303.265.9645

Eagle Environmental Consulting, Inc.

8000 W 44th Ave

Wheat Ridge CO 80033

Martin C Eckert III

Project Number: [none]

Project: Noble - Becca #D 3-11

CROSS REFERENCE REPORT

Sample ID	Laboratory ID	Matrix	Date Sampled	Date Received
Background-02@1'	Y206098-01	Soil	May 24, 2022 14:26	06/02/2022 15:38

Origins Laboratory, Inc.



The results in this report apply to the samples analyzed in accordance with the chain of custody document. This analytical report must be reproduced in its entirety.

Martin C Eckert III
Project Number: [none]
Project: Noble - Becca #D 3-11

ORIGINS

LABORATORY, INC

www.originslaboratory.com

years

page 1 of 1

Client: Eagle Env. Consulting

Address: 8000 W 44th Ave

Wheat Ridge, CO 80033

303-433-0479

Telephone Number:

Email Address: Mike Beedle - Enviro.com

Project Manager: Martin Eckert III

Project Name: Becca #D 3-11

Project Number: —

RH

Samples Collected By:

Fax: 303.265.9645

Phone: 303.433.1322

Denver, CO 80211

1725 Elk Place

Sample ID Description	Date Sampled	Time Sampled	# of Containers	Preservative				Matrix			Analysis				Sample Instructions
				Unpreserved	HCl	HNO ₃	Other	Groundwater	Soil	Air Summa Canister #	Other	As - 9945 B	As - 9945 B	As - 9945 B	
Background - 0201'	5/24/22	1426	1	X					X			X	X	pH = saturated	1
														paste prep	2
															3
															4
															5
															6
															7
															8
															9
															10

Relinquished By:	Date:	Time:	Received By:	Date:	Time:	Turnaround Time:
YH AS	6/2/22	1537	EH	4/2/22	1558	Same Day <input type="checkbox"/> 24 Hr <input type="checkbox"/> 48 Hr <input type="checkbox"/> 72 Hr <input type="checkbox"/> Standard <input checked="" type="checkbox"/>

Bill to Cole

Temp Received: 3.3

Date Results Needed

4/1/22

Origins Laboratory, Inc.

Byron

The results in this report apply to the samples analyzed in accordance with the chain of custody document. This analytical report must be reproduced in its entirety.

Eagle Environmental Consulting, Inc.
8000 W 44th Ave
Wheat Ridge CO 80033

Martin C Eckert III
Project Number: [none]
Project: Noble - Becca #D 3-11

Origins Laboratory

F-012207-01-R1
Effective Date: 01/09/12

Sample Receipt Checklist

Origins Work Order: 11206094 Client: Eagle
Client Project ID: Becca D 3-11

Checklist Completed by: KEH Shipped Via: 41D
(UPS, FedEx, Hand Delivered, Pick-up, etc.)
Date/time completed: 6/13/12 Airbill #: NA

Matrix(s) Received: (Check all that apply): 1 Soil/Solid Water Other:

Cooler Number/Temperature: 1 / 3.3 °C °C °C (Describe) °C

Thermometer ID: 7004

Requirement Description	Yes	No	N/A	Comments (if any)
If samples require cooling, was the temperature between 0°C to ≤ 6°C ⁽¹⁾ ?	<u>—</u>			
Is there ice present (document if blue ice is used)	<u>—</u>			
Are custody seals present on cooler? (if so, document in comments if they are signed and dated, broken or intact)		<u>—</u>		
Are custody seals present on each sample container? (if so, document in comments if they are signed and dated, broken or intact)		<u>—</u>		
Were all samples received intact ⁽¹⁾ ?	<u>—</u>			
Was adequate sample volume provided ⁽¹⁾ ?	<u>—</u>			
Are short holding time analytes or samples with HTs due within 48 hours present ⁽¹⁾ ?		<u>—</u>		
Is a chain-of-custody (COC) present and filled out completely ⁽¹⁾ ?	<u>—</u>			
Does the COC agree with the number and type of sample bottles received ⁽¹⁾ ?	<u>—</u>			
Do the sample IDs on the bottle labels match the COC ⁽¹⁾ ?	<u>—</u>			
Is the COC properly relinquished by the client with date and time recorded ⁽¹⁾ ?	<u>—</u>			
For volatiles in water – is there headspace (> ¼ inch bubble) present? If yes, contact client and note in narrative.			<u>—</u>	
Are samples preserved that require preservation and was it checked ⁽¹⁾ ? (note ID of confirmation instrument used in comments) / (preservation is not confirmed for subcontracted analyses in order to insure sample integrity)/(pH < 2 for samples preserved with HNO ₃ , HCL, H ₂ SO ₄) / (pH > 10 for samples preserved with NaAsO ₂ +NaOH, ZnAc+NaOH)			<u>—</u>	
Additional Comments (if any):				

⁽¹⁾If NO, then contact the client before proceeding with analysis and note date/time and person contacted as well as the corrective action to in the additional comments (above) and the case narrative.

Reviewed by (Project Manager) MD Date/Time Reviewed 6/16/12

Origins Laboratory, Inc.

J. Bynon

The results in this report apply to the samples analyzed in accordance with the chain of custody document. This analytical report must be reproduced in its entirety.

Eagle Environmental Consulting, Inc.

8000 W 44th Ave

Wheat Ridge CO 80033

Martin C Eckert III

Project Number: [none]

Project: Noble - Becca #D 3-11

Background-02@1'

5/24/2022 2:26:00PM

Analyte	Result	Reporting Limit	Units	Dilution	Batch	Analyst	Prepared	Analyzed	Notes
---------	--------	--------------------	-------	----------	-------	---------	----------	----------	-------

Origins Laboratory, Inc.

Y206098-01 (Soil)

Boron (DTPA Sorbitol)

Boron	ND	0.100	mg/L	1	B2F0611	KAP	06/06/2022	06/07/2022	
-------	----	-------	------	---	---------	-----	------------	------------	--

pH in Soil by 9045D

pH	7.50		pH Units	1	B2F0613	CNG	06/06/2022	06/07/2022	
----	------	--	----------	---	---------	-----	------------	------------	--

Origins Laboratory, Inc.



The results in this report apply to the samples analyzed in accordance with the chain of custody document. This analytical report must be reproduced in its entirety.

Eagle Environmental Consulting, Inc.
8000 W 44th Ave
Wheat Ridge CO 80033

Martin C Eckert III
Project Number: [none]
Project: Noble - Becca #D 3-11

Saturated Paste - Quality Control
Origins Laboratory, Inc.

Analyte	Result	Reporting Limit	Units	Spike Level	Source Result	%REC	%REC Limits	RPD	RPD Limit	Notes
---------	--------	-----------------	-------	-------------	---------------	------	-------------	-----	-----------	-------

Batch B2F0613 - NO PREP

Duplicate (B2F0613-DUP1)

Source: Y206097-01

Prepared: 06/06/2022 Analyzed: 06/07/2022

pH	8.44		pH Units		8.40			0.475	25	
----	------	--	----------	--	------	--	--	-------	----	--

Origins Laboratory, Inc.



The results in this report apply to the samples analyzed in accordance with the chain of custody document. This analytical report must be reproduced in its entirety.

Eagle Environmental Consulting, Inc.

8000 W 44th Ave

Wheat Ridge CO 80033

Martin C Eckert III

Project Number: [none]

Project: Noble - Becca #D 3-11

Notes and Definitions

ND Analyte NOT DETECTED at or above the reporting limit

RPD Relative Percent Difference

All soil results are reported at a wet weight basis.

Origins Laboratory, Inc.



The results in this report apply to the samples analyzed in accordance with the chain of custody document. This analytical report must be reproduced in its entirety.