

Inspection Photos
Location Name: CHAMPLIN 485 AMOCO #1
Location ID: 320071



Photo #1 Location sign.



Photo #2 Tanks.

Inspection Photos
Location Name: CHAMPLIN 485 AMOCO #1
Location ID: 320071



Photo # 3 Separators.



Photo #4 P/W tank.

Inspection Photos
Location Name: CHAMPLIN 485 AMOCO #1
Location ID: 320071



Photo #5 Ancillary equipment and well head.



Photo #6 Well head.

Inspection Photos
Location Name: CHAMPLIN 485 AMOCO #1
Location ID: 320071



Photo #7 Erosion on west side of P/W pit.



Photo #8 On the west side of pit facing north/east.

Inspection Photos
Location Name: CHAMPLIN 485 AMOCO #1
Location ID: 320071



Photo #9 Erosion/fisher on west of pit facing west away from pit toward Antelope creek.



Photo #10 Erosion/fisher in pit on the west side facing south east.

Inspection Photos
Location Name: CHAMPLIN 485 AMOCO #1
Location ID: 320071



Photo #11 Erosion on the north side of pit facing north/east away from pit.



Photo #12 Erosion/fisher in pit, north side facing east.

Inspection Photos
Location Name: CHAMPLIN 485 AMOCO #1
Location ID: 320071



Photo #13 Erosion/fisher north side of pit facing east and away from pit.



Photo #14 Erosion/fisher on east side of pit facing west.

Inspection Photos
Location Name: CHAMPLIN 485 AMOCO #1
Location ID: 320071



Photo # 15 Erosion/fishers south east side of pit facing east & away from pit.



Photo #16 Erosion/fishers east side of pit facing west.

Inspection Photos
Location Name: CHAMPLIN 485 AMOCO #1
Location ID: 320071

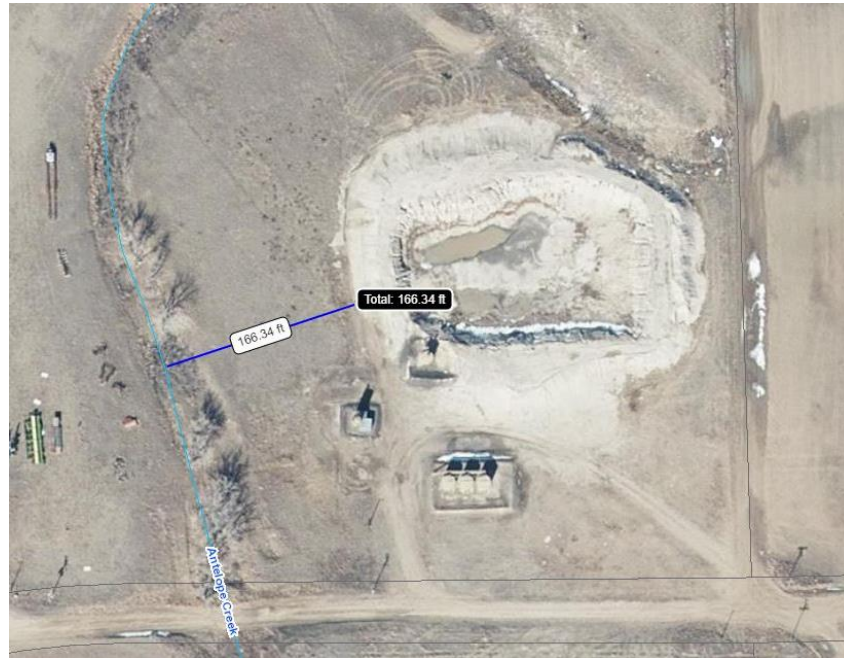


Photo # Aerial image with distance to antelope creek.