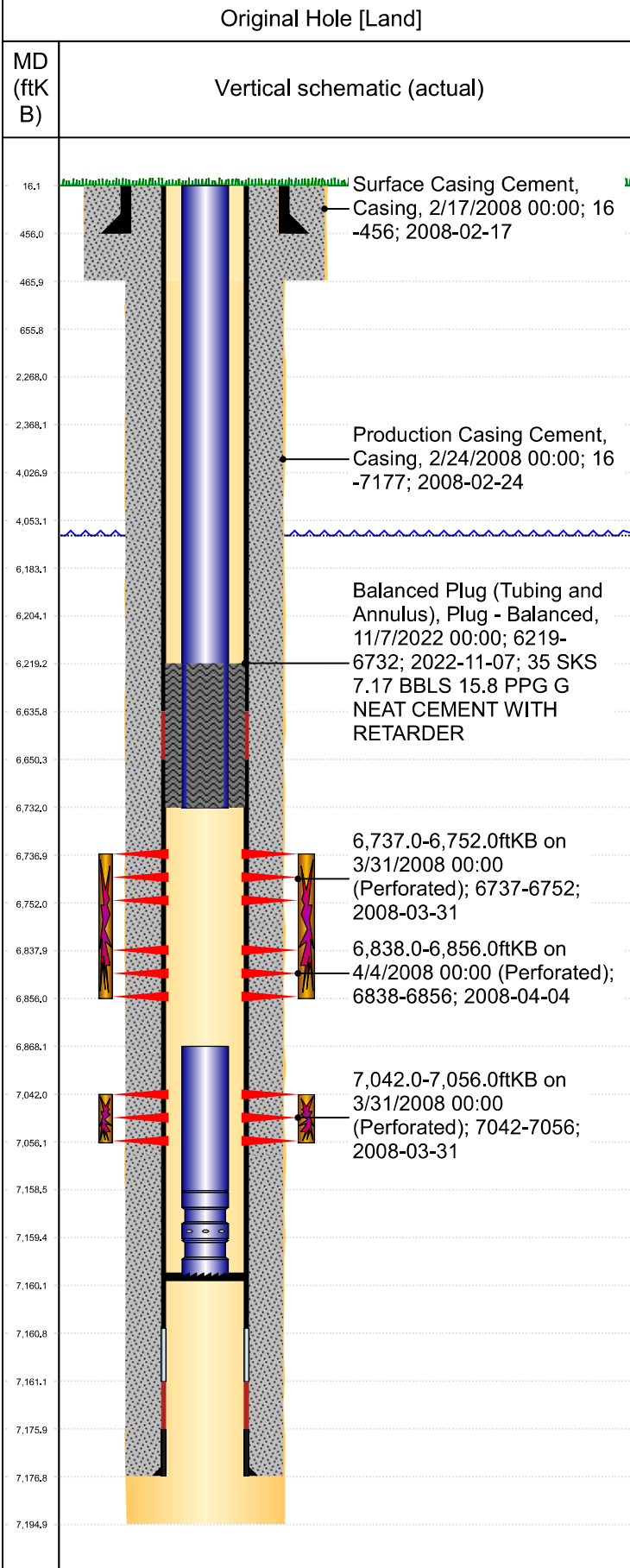




PA Wellbore For State - Vertical

Well Name: FRANK 13-25



Well Header					
Surface UWI	0512326660	Business Unit	Rockies	Gov Auth Dist	Prod Tree Loc
Orig. KB to Gnd (ft)	16.00	Original Spud Date	2/17/2008	Abandon Date	Well Sub-Status
Comment					
NIOBRARA FRAC SCREENED OUT. CEMENT BASKETS @4857', 4773', & 4348'					

Geologic Horizons	
Formation Name	Final Top MD (ftKB)
FOXHILLS-BASE PROD	383.0
UPPER PIERRE AQUIFER-TOP PROD	530.0
UPPER PIERRE AQUIFER-BASE PROD	1,450.0
A SAND-TOP PROD	2,388.4
A SAND-BASE PROD	2,933.8
SUSSEX-TOP PROD	4,103.0
SUSSEX-BASE PROD	4,448.4
SHANNON-TOP PROD	4,910.9
SHANNON-BASE PROD	5,074.7
SHARON SPRING MKR	6,695.6
INTRA SHARON SPGS MK	6,696.5
NIOBRARA-TOP PROD	6,761.8
CODELL	7,041.2
FORT HAYS	7,042.0
CARLILE	7,058.1
GREENHORN	7,127.0

Surface Location (Congressional)								
Qtr 3	Qtr 4	Section	Twnshp	Twnsh...	Range	Rng E/...	Latitude (°)	Longitude (°)
NE	NW	13	4	N	65	W	40.31676	-104.61615

Wellbore Sections			
Section Des	Hole Size (in)	Top Depth (ftKB)	Btm Depth (ftKB)
SURFACE	12 1/4	16.0	466.0
PRODUCTION	7 7/8	466.0	7,195.0

Casing Strings						
Csg Des	Run Date	OD (in)	Wt/Len (lb/ft)	Grade	Top Depth (MD) (ftKB)	Set Depth (MD) (ftKB)
Surface	2/17/2008	8 5/8	24.00		16	456
Production Casing	2/24/2008	4 1/2	11.60	M-80	16	7177

Cement			
Des	Start Date	Top (ftKB)	Btm (ftKB)
Surface Casing Cement	2/17/2008	16.0	456.0
Production Casing Cement	2/24/2008	16.0	7,177.0
Balanced Plug (Tubing and Annulus)	11/7/2022	6,219.0	6,732.0

Stim/Frac Summary	
Min Top Depth (ftKB)	Max Btm Depth (ftKB)
6,737.0	7,056.0

Perforations			
Linked Zone	Date	Top Depth (ftKB)	Bottom Depth (ftKB)
NIOBRARA, Original Hole	3/31/2008 00:00	6,737.0	6,752.0
NIOBRARA, Original Hole	4/4/2008 00:00	6,838.0	6,856.0
CODELL, Original Hole	3/31/2008 00:00	7,042.0	7,056.0

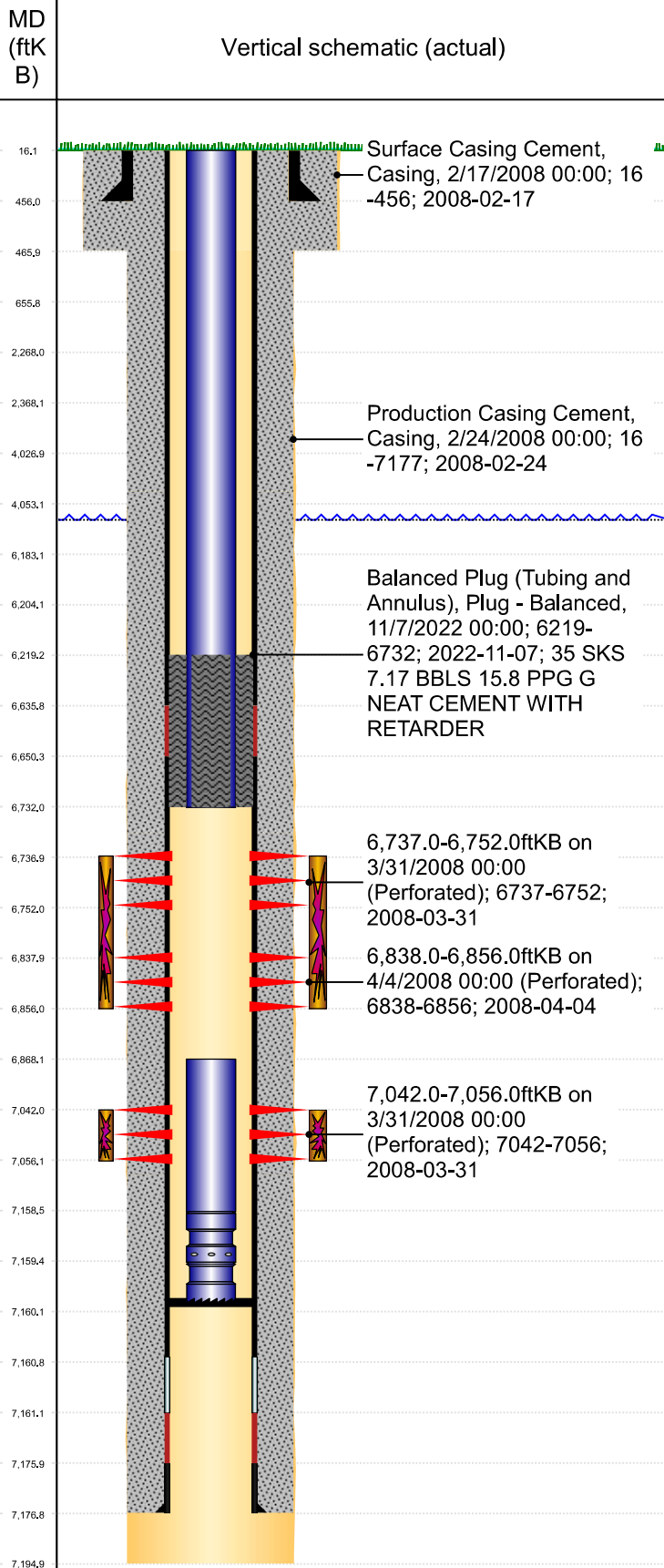
Other In Hole					
Run Date	Des	Make	OD (in)	Top (ftKB)	Btm (ftKB)



PA Wellbore For State - Vertical

Well Name: FRANK 13-25

Original Hole [Land]



Logs				
Date	Type	Depth Top (MD) (ftKB)	Btm (ftKB)	
2/22/2008	COMPENSATED DENSITY	3,600	7,173.0	
2/22/2008	INDUCTION	400	7,193.0	
3/27/2008	CEMENT BOND	50	7,137.0	
1/21/2019	GYRO	16	6,900.0	

Wellbore Plug Back Total Depths				
Date	Type	Com	PBTD (ftKB)	
3/27/2008	FILL	DEPTH LOGGER ON CBL	7,139	
11/19/2008	FILL	CLEAN OUT	7,160	