

JILLSON 14-22 (12323027_FL): Abandon in Place Layout

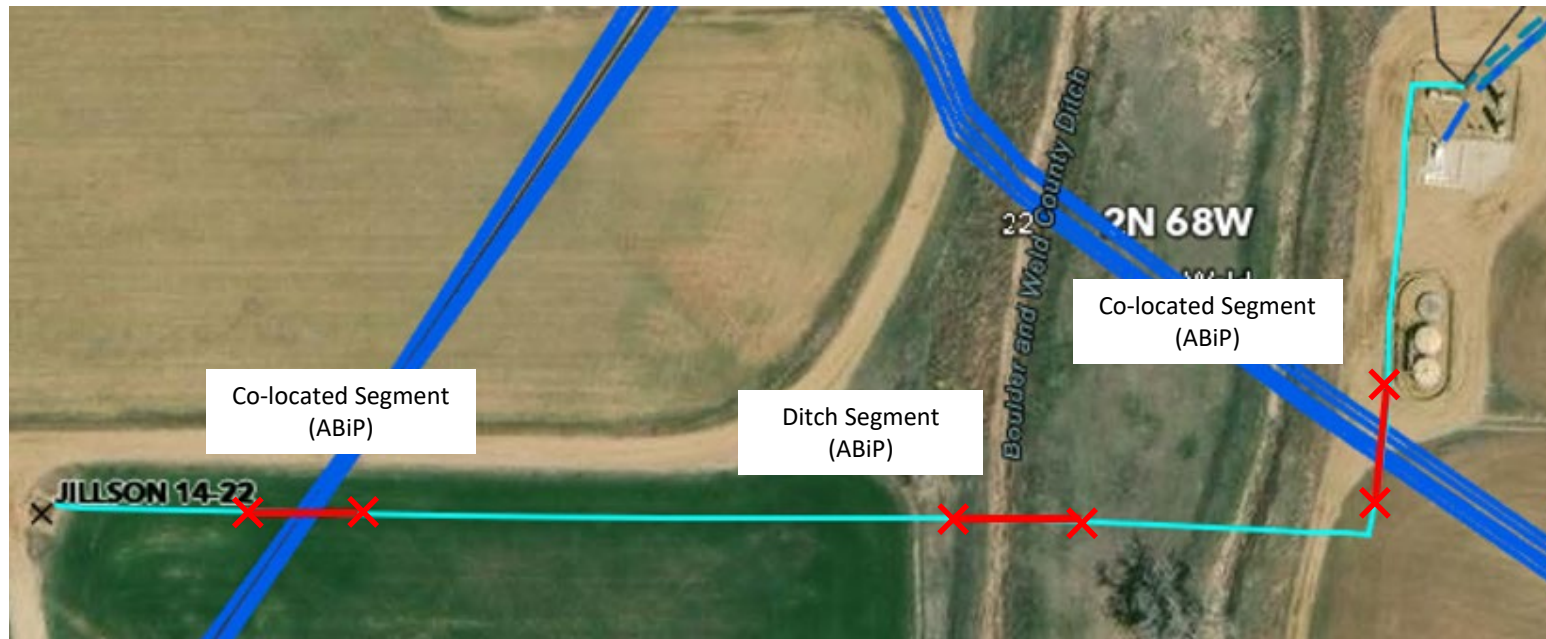
40.118620, -104.996160

SWSW Sec. 22 T2N, R68W, 6th PM

Weld County, Colorado

Crestone Peak Resources (10633)

Flowline Unique OperFeatID	Line Type	Start Location Lat/Long	End Location Lat/Long (Cut Point)	Segment Length (ft)	Segment	Abandonment Type
12323027_FL	Multiphase	40.118620, -104.996160	40.118626, -104.995717	110	Light Blue	Remove
12323027_FL	Multiphase	40.118626, -104.995717	40.11863, -104.995492	80	Red	Abandon in Place
12323027_FL	Multiphase	40.11863, -104.995492	40.118618, -104.994274	345	Light Blue	Remove
12323027_FL	Multiphase	40.118618, -104.994274	40.118606, -104.994038	75	Red	Abandon in Place
12323027_FL	Multiphase	40.118606, -104.994038	40.118634, -104.993395	195	Light Blue	Remove
12323027_FL	Multiphase	40.118634, -104.993395	40.118823, -104.993362	75	Red	Abandon in Place
12323027_FL	Multiphase	40.118823, -104.993362	40.119307, -104.993207	205	Light Blue	Remove



Segment End Points

✗ Indicates where flowline abandonment type changes