

PHOTO LOG
WINDELL1-13&4&5-18 FACILITY
WELD COUNTY, COLORADO
KERR-MCGEE OIL & GAS ONSHORE, LP

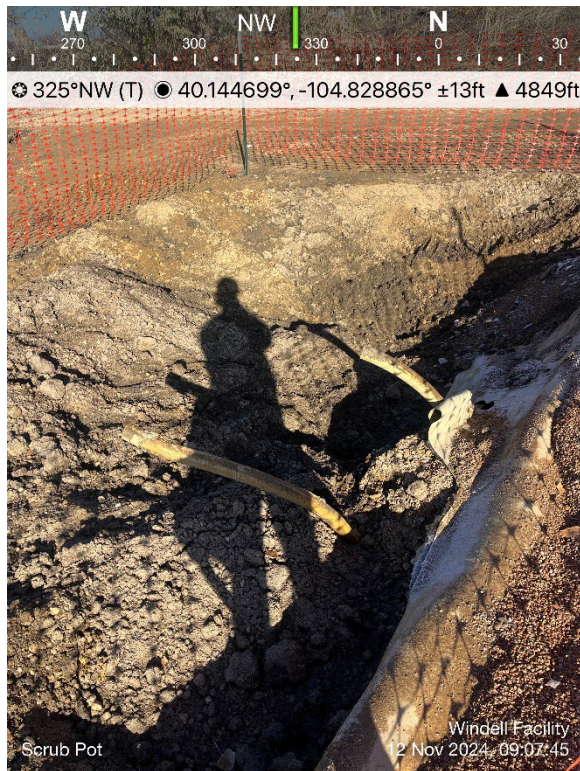


PWV Excavation



AST Tank Bottom

PHOTO LOG
WINDELL1-13&4&5-18 FACILITY
WELD COUNTY, COLORADO
KERR-MCGEE OIL & GAS ONSHORE, LP



Scrub Pot Screening Location

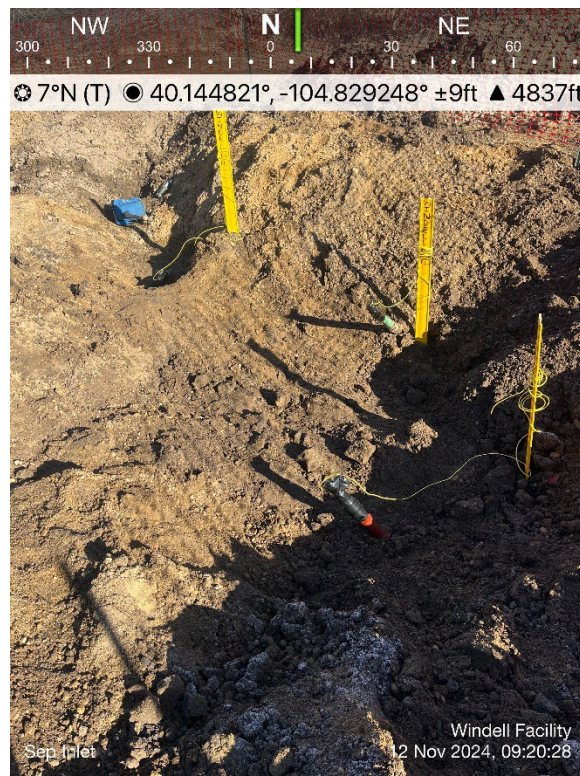


AST Footprint

PHOTO LOG
WINDELL1-13&4&5-18 FACILITY
WELD COUNTY, COLORADO
KERR-MCGEE OIL & GAS ONSHORE, LP

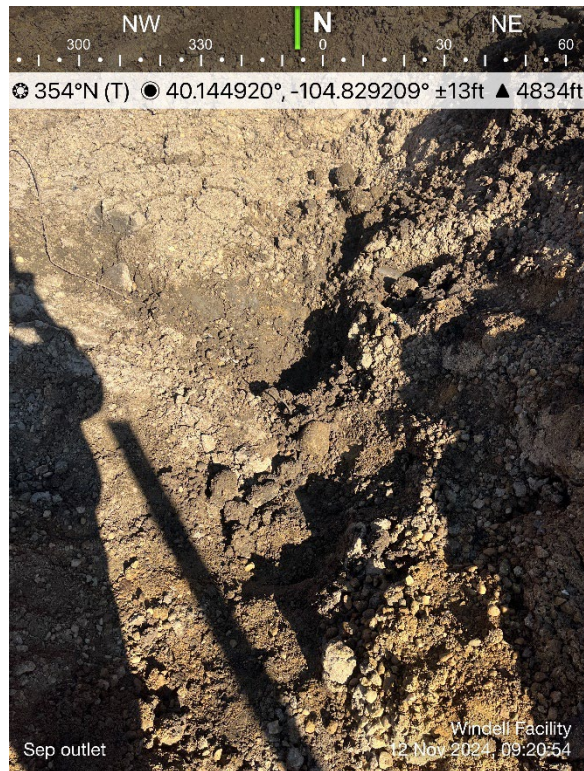


Dumpline Screening Location

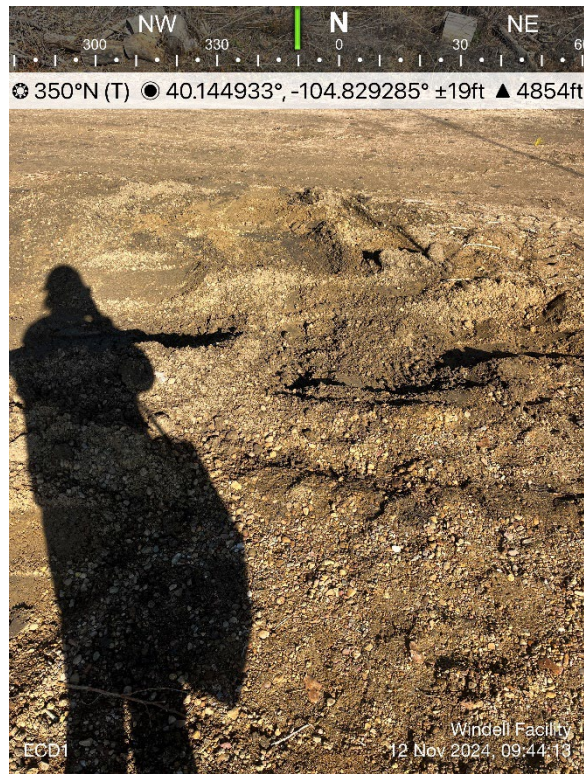


Separator Inlet Sample Location

PHOTO LOG
WINDELL1-13&4&5-18 FACILITY
WELD COUNTY, COLORADO
KERR-MCGEE OIL & GAS ONSHORE, LP



Separator Outlet Sample Location



ECD Screening Location 01

PHOTO LOG
WINDELL1-13&4&5-18 FACILITY
WELD COUNTY, COLORADO
KERR-MCGEE OIL & GAS ONSHORE, LP

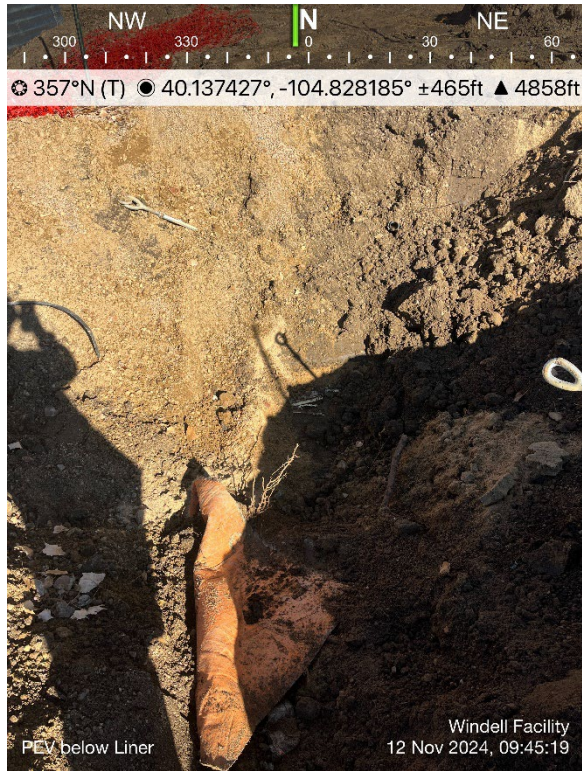


ECD Screening Location 02

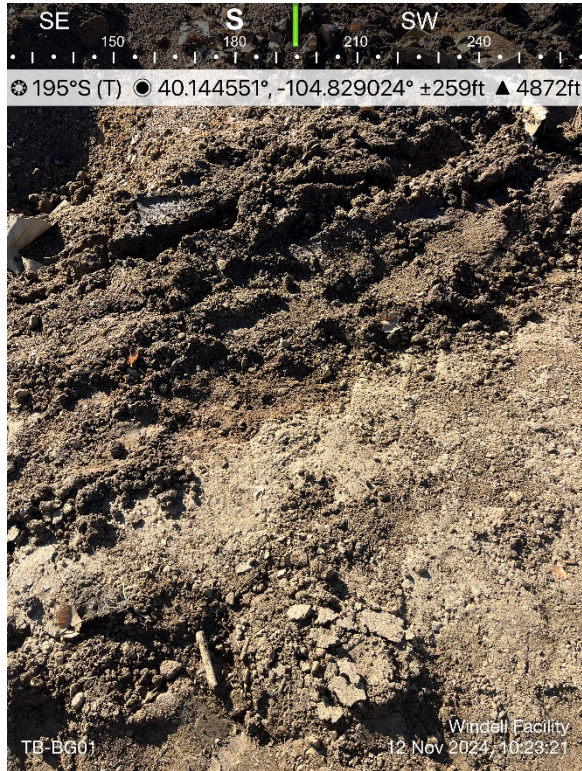


Meter House Screening Location

PHOTO LOG
WINDELL1-13&4&5-18 FACILITY
WELD COUNTY, COLORADO
KERR-MCGEE OIL & GAS ONSHORE, LP



PWV Below Liner



Tank Battery Background Sample Location

PHOTO LOG
WINDELL1-13&4&5-18 FACILITY
WELD COUNTY, COLORADO
KERR-MCGEE OIL & GAS ONSHORE, LP



AST Below Liner