

PROJECT DETAILS: Garfield County, CO
 Geodetic System: US State Plane 1983
 Datum: North American Datum 1983
 Ellipsoid: GRS 1980
 Zone: Colorado Central Zone
 System Datum: Mean Sea Level

REFERENCE INFORMATION
 Co-ordinate (N/E) Reference: Well CC Federal 0697-15-18W - Slot A-10, True North
 Vertical (TVD) Reference: RKB @ 8533.0usft (H&P #522)
 Section (VS) Reference: Slot - A-10(0.0N, 0.0E)
 Measured Depth Reference: RKB @ 8533.0usft (H&P #522)
 Calculation Method: Minimum Curvature

Project: Garfield County, CO
Site: CC 0604-15-08 Pad
Well: CC Federal 0697-15-18W
Wellbore: A-10
Design: Design #2
Latitude: 39.526115
Longitude: -108.199067
Ground Level: 8503.0
RKB @ 8533.0usft (H&P #522)

DESIGN TARGET DETAILS

Name	TVD	+N/-S	+E/-W	Northing	Easting	Latitude	Longitude
15-18W - PBHL	8953.0	-2997.0	-3017.3	1624919.26	2235655.03	39.517887	-108.209762

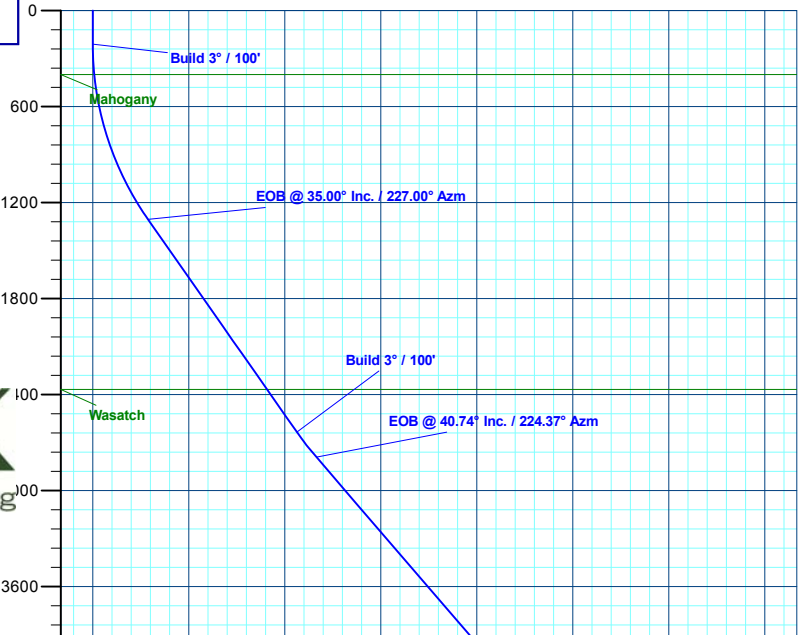
WELL DETAILS: CC Federal 0697-15-18W

+N/-S	+E/-W	Northing	Easting	Latitude	Longitude	A-10
0.0	0.0	1627825.28	2238759.98	39.526115	-108.199067	

FORMATION TOP DETAILS

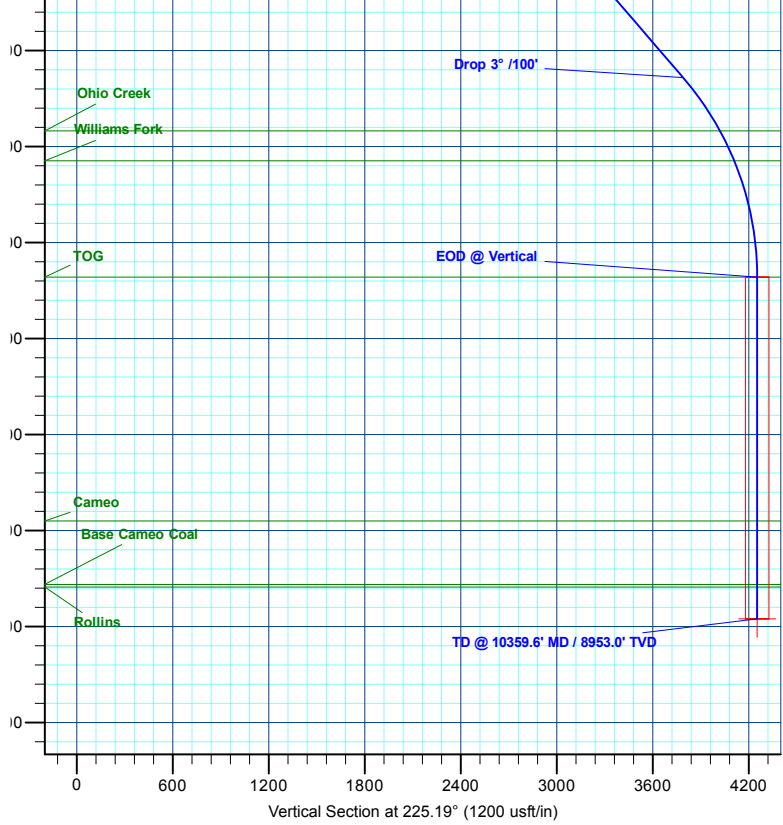
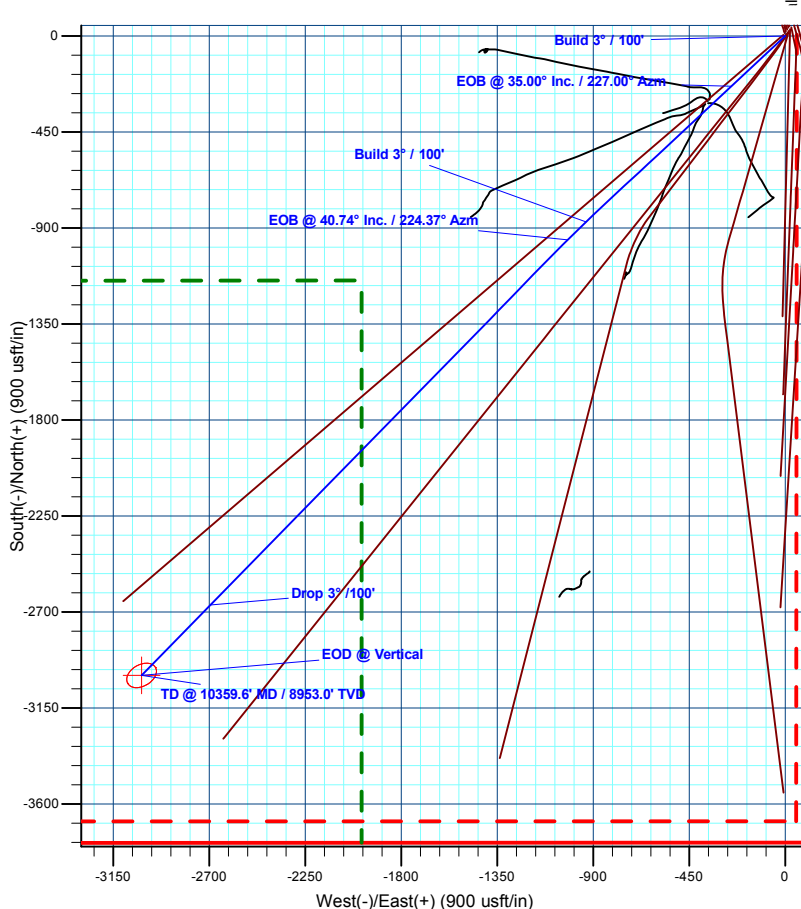
TVDPath	MDPath	Formation
400.0	400.3	Mahogany
2368.0	2673.8	Wasatch
4368.0	5278.7	Wasatch 'G' Sand
4578.0	5555.9	Fort Union
5902.0	7269.5	Ohio Creek
6090.0	7477.9	Williams Fork
6816.0	8222.6	TOG
8340.0	9746.6	Cameo
8738.0	10144.6	Base Cameo Coal
8753.0	10159.6	Rollins

Azimuths to True North
 Magnetic North: 9.40°
 Magnetic Field Strength: 51318.5nT
 Dip Angle: 65.72°
 Date: 12/3/2020
 Model: HDGM2020



SECTION DETAILS

MD	Inc	Azi	TVD	+N/-S	+E/-W	Dleg	TFace	VSect	Annotation
0.0	0.00	0.00	0.0	0.0	0.0	0.00	0.00	0.0	
210.0	0.00	0.00	210.0	0.0	0.0	0.00	0.00	0.0	Build 3° / 100°
1376.7	35.00	227.00	1305.5	-235.6	-252.6	3.00	227.00	345.2	EOB @ 35.00° Inc. / 227.00° Azm
3000.0	35.00	227.00	2635.2	-870.6	-933.6	0.00	0.00	1275.9	Build 3° / 100°
3198.7	40.74	224.37	2792.0	-955.9	-1020.7	3.00	-16.77	1397.8	EOB @ 40.74° Inc. / 224.37° Azm
6864.6	40.74	224.37	5569.6	-2666.1	-2693.6	0.00	0.00	3790.0	Drop 3° / 100°
8222.6	0.00	0.00	6816.0	-2997.0	-3017.3	3.00	180.00	4252.7	EOD @ Vertical
10359.6	0.00	0.00	8953.0	-2997.0	-3017.3	0.00	0.00	4252.7	TD @ 10359.6' MD / 8953.0' TVD



Plan: Design #2 (CC Federal 0697-15-18W/A-10)
Created By: Will Jircik **Date:** 12:14, June 02 2021