

PROJECT DETAILS: Garfield County, CO
 Geodetic System: US State Plane 1983
 Datum: North American Datum 1983
 Ellipsoid: GRS 1980
 Zone: Colorado Central Zone
 System Datum: Mean Sea Level

REFERENCE INFORMATION
 Co-ordinate (N/E) Reference: Well CC Federal 0697-15-19W - Slot A-9, True North
 Vertical (TVD) Reference: RKB @ 8533.0usft (H&P #522)
 Section (VS) Reference: Slot - A-9(0.0N, 0.0E)
 Measured Depth Reference: RKB @ 8533.0usft (H&P #522)
 Calculation Method: Minimum Curvature

Project: Garfield County, CO
Site: CC 0604-15-08 Pad
Well: CC Federal 0697-15-19W
Wellbore: A-9
Design: Design #2
Latitude: 39.526138
Longitude: -108.199047
Ground Level: 8503.0
RKB @ 8533.0usft (H&P #522)

DESIGN TARGET DETAILS

Name	TVD	+N/-S	+E/-W	Northing	Easting	Latitude	Longitude
15-19W - PBHL	9498.0	-3301.7	-2639.3	1624611.46	2236029.70	39.517073	-108.208402

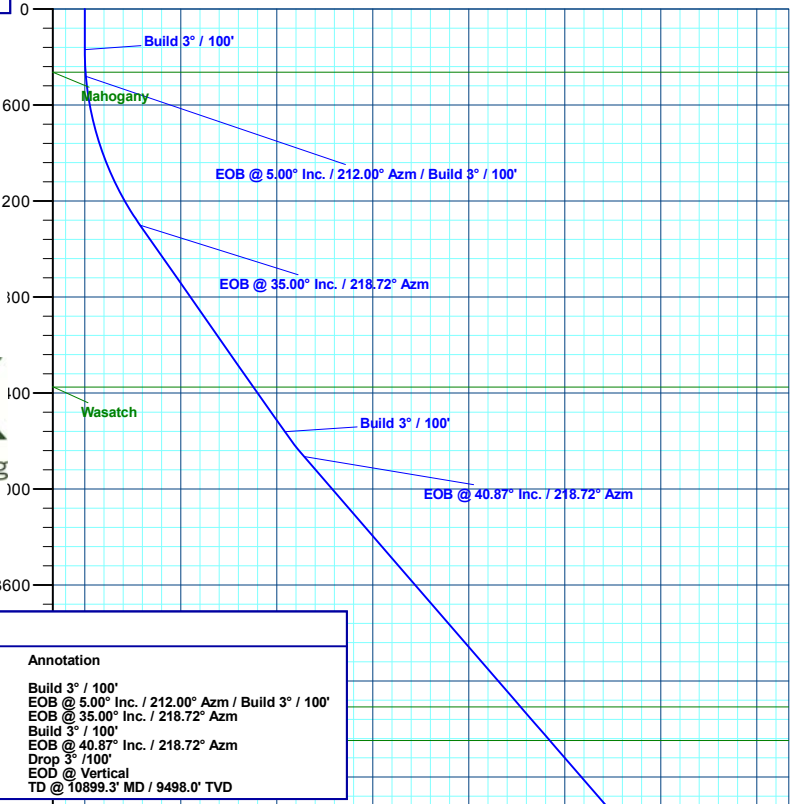
WELL DETAILS: CC Federal 0697-15-19W

+N/-S	+E/-W	Northing	Easting	Latitude	Longitude	A-9
0.0	0.0	1627833.34	2238765.90	39.526138	-108.199047	

FORMATION TOP DETAILS

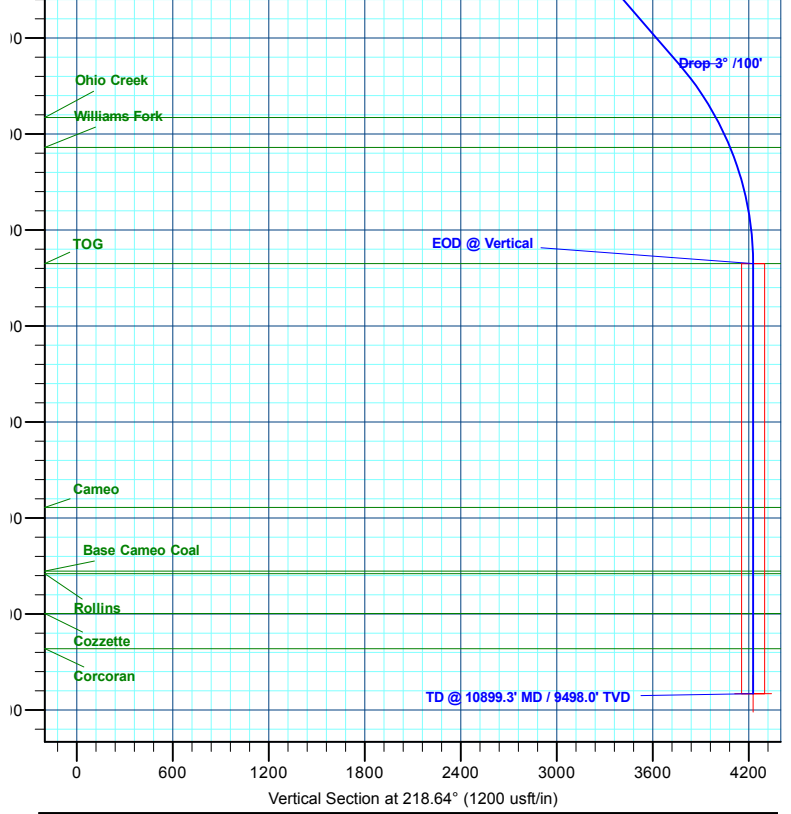
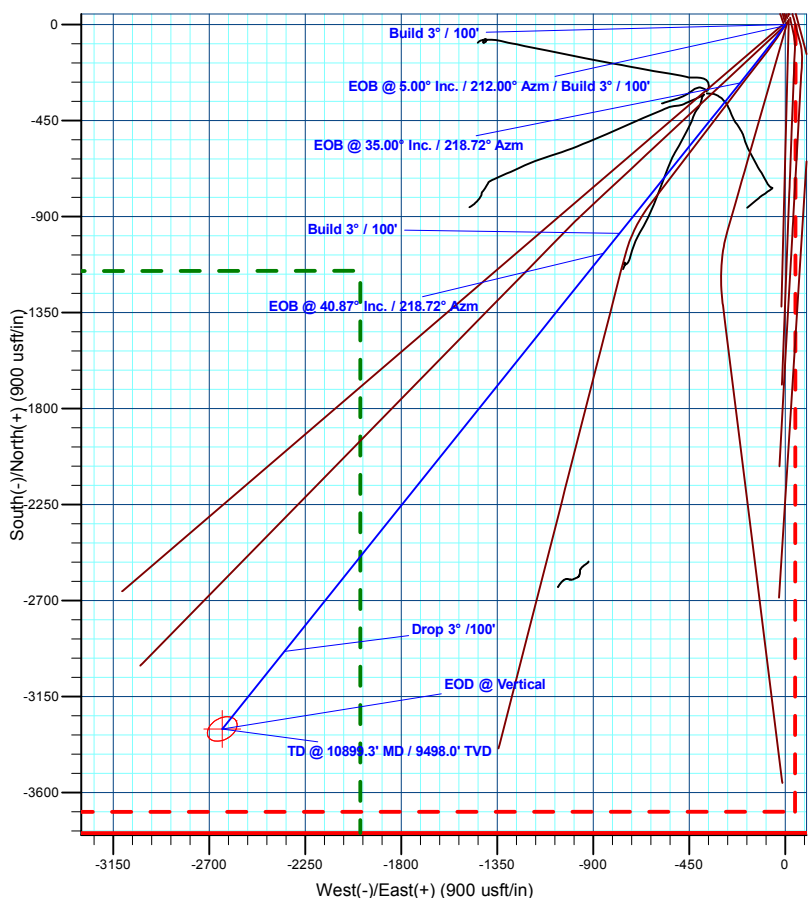
TVDPath	MDPath	Formation
395.0	395.1	Mahogany
2363.0	2657.5	Wasatch
4363.0	5265.4	Wasatch 'G' Sand
4573.0	5543.1	Fort Union
5897.0	7289.2	Ohio Creek
6085.0	7487.6	Williams Fork
6811.0	8212.3	TOG
8335.0	9736.3	Cameo
8733.0	10134.3	Base Cameo Coal
8748.0	10149.3	Rollins
8998.0	10399.3	Cozzette
9218.0	10619.3	Corcoran

Azimuths to True North
 Magnetic North: 9.40°
 Magnetic Field Strength: 51318.5nT
 Dip Angle: 65.72°
 Date: 12/3/2020
 Model: HDGM2020



SECTION DETAILS

MD	Inc	Azi	TVD	+N/-S	+E/-W	Dleg	TFace	VSect	Annotation
0.0	0.00	0.00	0.0	0.0	0.0	0.00	0.00	0.0	
255.0	0.00	0.00	255.0	0.0	0.0	0.00	0.00	0.0	Build 3° / 100'
421.7	5.00	212.00	421.5	-6.2	-3.9	3.00	212.00	7.2	EOB @ 5.00° Inc. / 212.00° Azm / Build 3° / 100'
1423.0	35.00	218.72	1351.7	-273.4	-211.4	3.00	7.71	345.5	EOB @ 35.00° Inc. / 218.72° Azm
3000.0	35.00	218.72	2643.5	-979.1	-777.2	0.00	0.00	1250.1	Build 3° / 100'
3195.6	40.87	218.72	2797.7	-1072.9	-852.4	3.00	0.00	1370.2	EOB @ 40.87° Inc. / 218.72° Azm
6850.1	40.87	218.72	5561.4	-2938.5	-2348.1	0.00	0.00	3761.4	Drop 3° / 100'
8212.3	0.00	0.00	6811.0	-3301.7	-2639.3	3.00	180.00	4227.0	EOD @ Vertical
10899.3	0.00	0.00	9498.0	-3301.7	-2639.3	0.00	0.00	4227.0	TD @ 10899.3' MD / 9498.0' TVD



Plan: Design #2 (CC Federal 0697-15-19W/A-9)
Created By: Will Jircik **Date: 12:25, June 02 2021**