



SITE NAME: ROACH BASS T5N-R67W-S14 L01							DATE: 10/21/2024	REM. PROJECT #: 37199	WEATHER: Cloudy 60s		
SITE DIRECTIONS: Turn South on 34 then right onto 21							CLIENT: Noble				
LEGALS AND LAT/LONG: 40.396521 -104.860092							TASMAN PERSONNEL: WW PD SW				
SOIL TYPES: Clayey Sand - SC							SURFACE GRADIENT: East				
SOIL SAMPLING							FACILITY INFRASTRUCTURE				
Date/Time	Soil Sample ID	PID (ppm)	Visual	Olfactory	Photo?	Grab or Lab Sample?	EQUIPMENT	Quantity	Photo?		
							Above Ground Storage Tank (AST)	6	✓		
10-21-2024 13:30	AST01@0-6"	0.0	No Staining	No Odor	Yes	Lab	Buried or Partially Buried Vessel				
10-21-2024 13:35	AST02@0-6"	0.4	No Staining	No Odor	Yes	Lab	Separator	5	✓		
10-21-2024 13:40	AST03@0-6"	0.1	No Staining	No Odor	Yes	Lab	Emission Control Device (ECD)				
10-21-2024 13:45	AST04@0-6"	4.4	No Staining	No Odor	Yes	Lab	Dump Line				
10-21-2024 13:50	AST05@0-6"	1.2	No Staining	No Odor	Yes	Lab	Wellhead				
10-21-2024 13:55	AST06@0-6"	22.4	No Staining	No Odor	Yes	Lab	Flowline				
10-21-2024 11:08	MH01@0-6"	0.0	No Staining	No Odor	Yes	Grab	Other:				
10-21-2024 11:09	MH02@0-6"	0.0	No Staining	No Odor	Yes	Grab	Soil Loads Removed				
10-21-2024 11:10	MH03@0-6"	0.0	No Staining	No Odor	Yes	Grab	IMPACTED SOIL IDENTIFIED?				
10-21-2024 11:11	MH04@0-6"	0.0	No Staining	No Odor	Yes	Grab	ESTIMATED VOLUME OF IMPACTS:				
10-21-2024 11:21	FLARE01@0-6"	0.0	No Staining	No Odor	Yes	Grab	Date	Number	CY		
10-21-2024 11:22	FLARE02@0-6"	0.0	No Staining	No Odor	Yes	Grab					
10-21-2024 11:23	FLARE03@0-6"	0.0	No Staining	No Odor	Yes	Grab					
10-21-2024 12:30	PWV01-B@4'	2.9	No Staining	No Odor	Yes	Lab					
10-21-2024 12:31	PWV01-N@2'	2.7	No Staining	No Odor	Yes	Lab					
10-21-2024 12:32	PWV01-E@2'	0.3	No Staining	No Odor	Yes	On-hold	Total Removed	0	0		
10-21-2024 12:45	PWV02-B@4'	0.5	No Staining	No Odor	Yes	Lab	Disposal Facility:				
10-21-2024 12:46	PWV02-S@2'	0.1	No Staining	No Odor	Yes	Lab	Groundwater Recovery				
10-21-2024 12:47	PWV02-E@2'	0.0	No Staining	No Odor	Yes	On-hold	DATE GW ENCOUNTERED:	DEPTH:			
10-21-2024 13:00	PWV03-B@4'	1.1	No Staining	No Odor	Yes	Lab	GROUNDWATER IN CONTACT WITH IMPACTED SOIL?				
10-21-2024 13:01	PWV03-N@2'	0.0	No Staining	No Odor	Yes	Lab					
10-21-2024 13:02	PWV03-W@2'	0.0	No Staining	No Odor	Yes	On-hold	LNAPL OR SHEEN OBSERVED ON GW?				
GROUNDWATER SAMPLING							Date	BBLs			
Date/Time	Groundwater Sample ID	Depth Collected	Turbid?	Sheen?	Odor?	Photo?					
							Total Removed	0			
							Disposal Facility:				



Equipment ID: SEP01-FL@4'		Equipment Type:		Equipment ID: SEP01-DL@4'		Equipment Type:	
Material:	Volume:	Contents:		Material:	Volume:	Contents:	
Notes/Conditions:				Notes/Conditions:			



Equipment ID: SEP02-FL@4'		Equipment Type:		Equipment ID: SEP-02-DL@4'		Equipment Type:	
Material:	Volume:	Contents:		Material:	Volume:	Contents:	
Notes/Conditions:				Notes/Conditions:			



Equipment ID: SEP03-FL@4'		Equipment Type:		Equipment ID: SEP03-DL@4'		Equipment Type:	
Material:	Volume:	Contents:		Material:	Volume:	Contents:	
Notes/Conditions:				Notes/Conditions:			



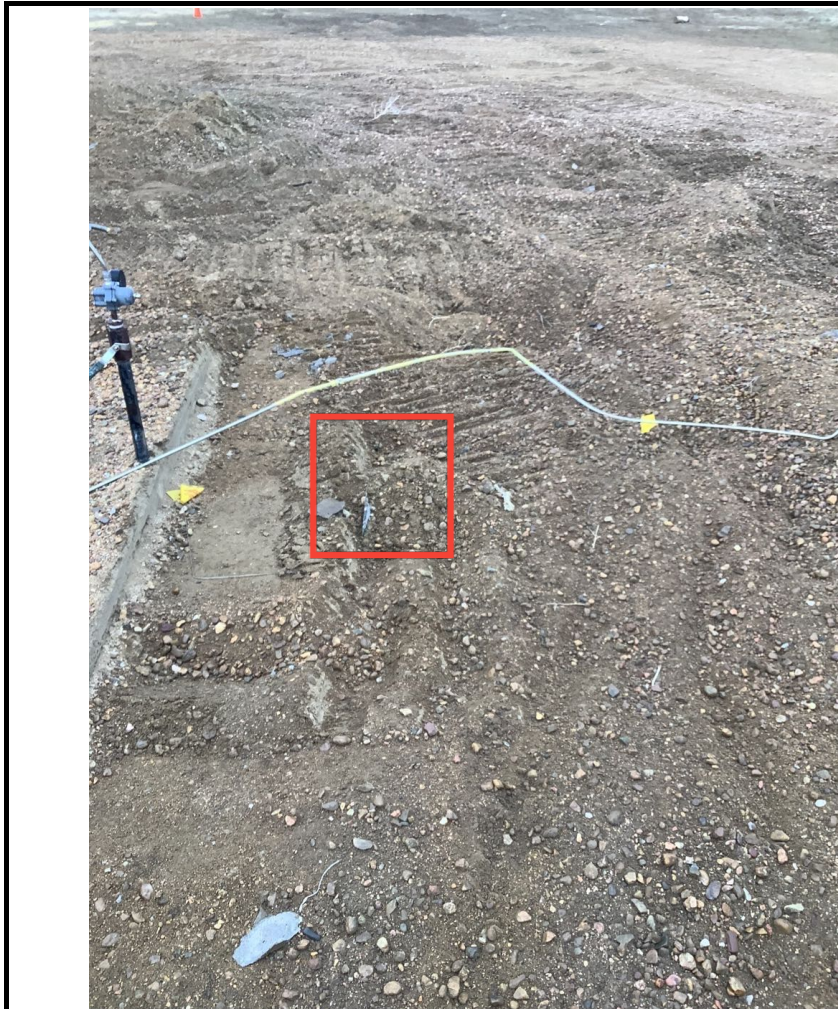
Equipment ID: MH01@0-6"		Equipment Type:		Equipment ID: MH02@0-6"		Equipment Type:	
Material:	Volume:	Contents:		Material:	Volume:	Contents:	
Notes/Conditions:				Notes/Conditions:			



Equipment ID: MH03@0-6"		Equipment Type:		Equipment ID: MH04@0-6"		Equipment Type:	
Material:	Volume:	Contents:		Material:	Volume:	Contents:	
Notes/Conditions:				Notes/Conditions:			

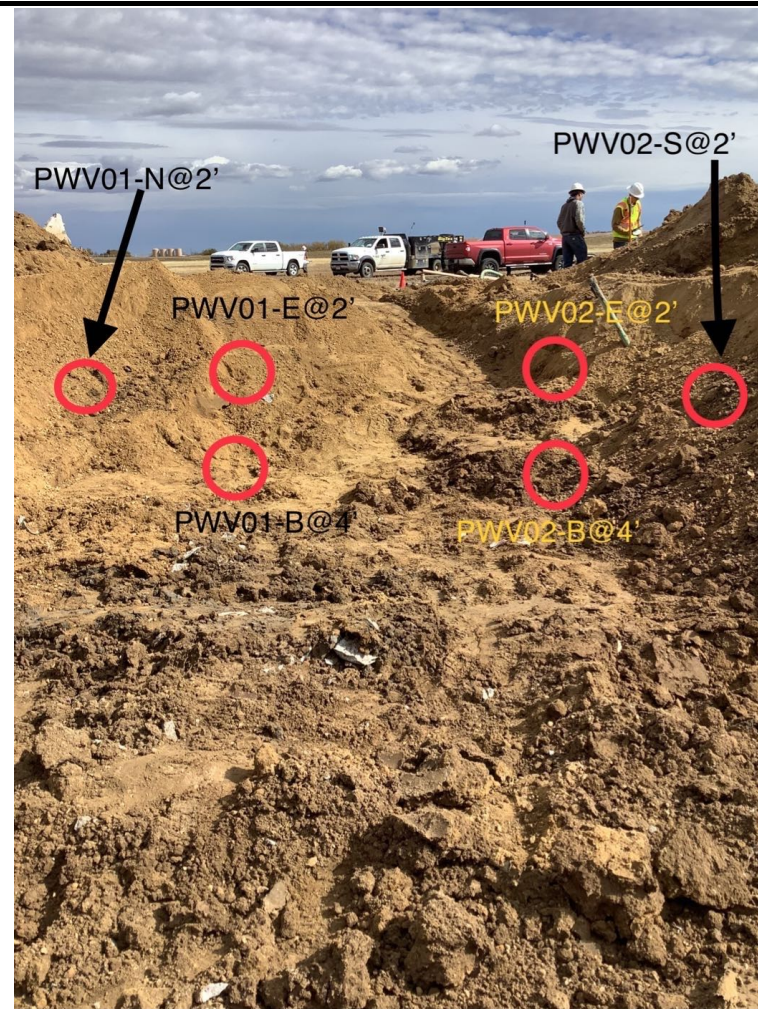


Equipment ID: FLARE01@0-6"		Equipment Type:		Equipment ID: FLARE02@0-6"		Equipment Type:	
Material:	Volume:	Contents:		Material:	Volume:	Contents:	
Notes/Conditions:				Notes/Conditions:			



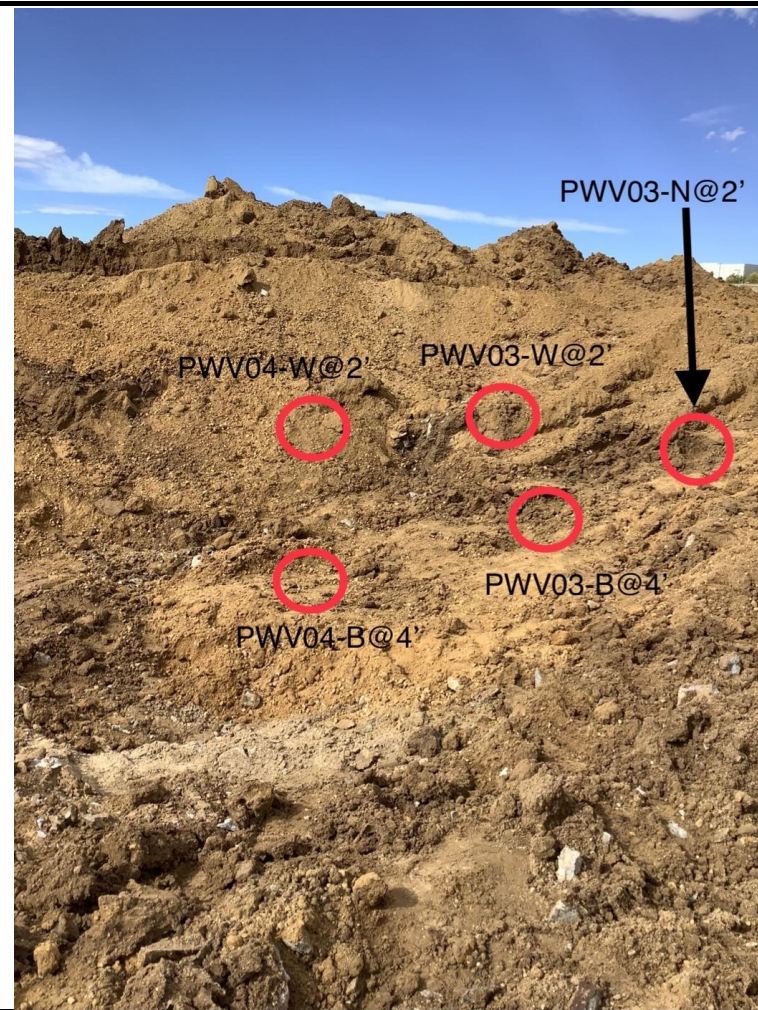
Equipment ID: FLARE03@0-6"		Equipment Type:	
Material:	Volume:	Contents:	
Notes/Conditions:			

Equipment ID:		Equipment Type:	
Material:	Volume:	Contents:	
Notes/Conditions: *AST01 through AST3@0-6"			



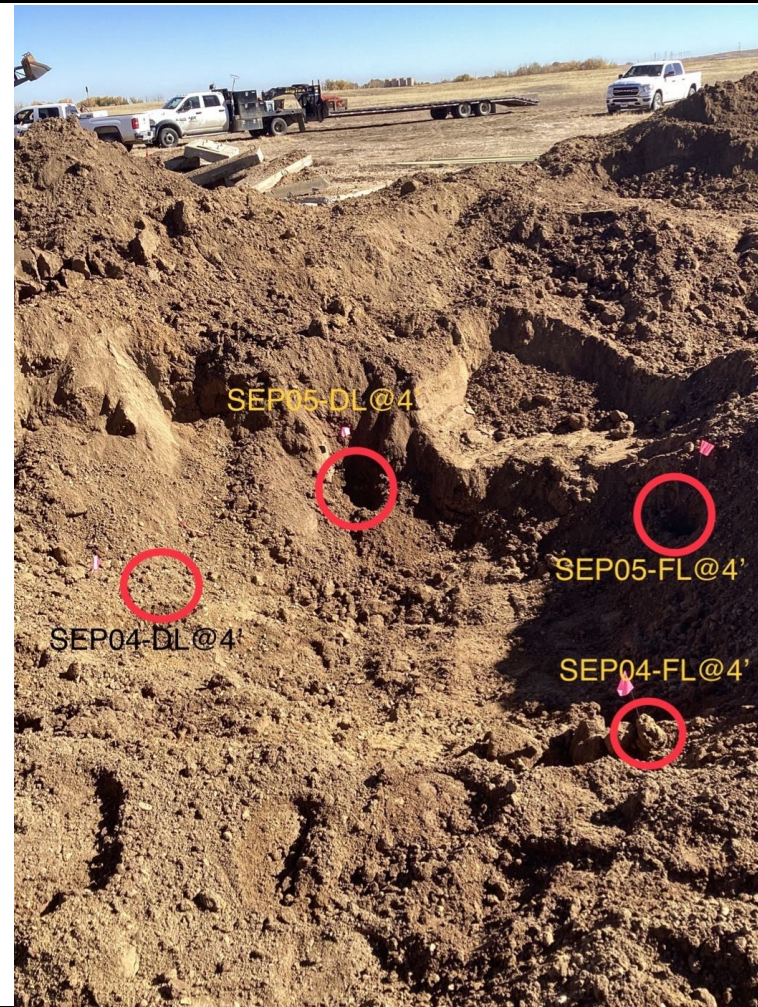
Equipment ID:		Equipment Type:	
Material:	Volume:	Contents:	
Notes/Conditions: AST04 through AST06@0-6"			

Equipment ID:		Equipment Type:	
Material:	Volume:	Contents:	
Notes/Conditions:			



Equipment ID:		Equipment Type:	
Material:	Volume:	Contents:	
Notes/Conditions: ASTs crushed			

Equipment ID:		Equipment Type:	
Material:	Volume:	Contents:	
Notes/Conditions:			



Equipment ID:		Equipment Type:		Equipment ID:		Equipment Type:	
Material:	Volume:	Contents:		Material:	Volume:	Contents:	
Notes/Conditions:				Notes/Conditions:			



Equipment ID: BKG01		Equipment Type:		Equipment ID:		Equipment Type:	
Material:	Volume:	Contents:		Material:	Volume:	Contents:	
Notes/Conditions:				Notes/Conditions:			

TABLE 1
FIELD DATA SUMMARY TABLE
NOBLE ENERGY, INC. - 100322
ROACH BASS T5N-R67W-S14 L01 LOC, WELD COUNTY, COLORADO
REM # 37199

Sample ID	Sample Date	Depth (ft. bgs)	GPS Data Latitude/Longitude		PDOP Value	VOC Concentration (ppm)
AST01@0-6"	10/21/24	0-0.5	40.396653	-104.860119	0.8	0.0
AST02@0-6"	10/21/24	0-0.5	40.396692	-104.860122	0.8	0.4
AST03@0-6"	10/21/24	0-0.5	40.396735	-104.860107	0.8	0.1
AST04@0-6"	10/21/24	0-0.5	40.396646	-104.860196	0.8	4.4
AST05@0-6"	10/21/24	0-0.5	40.396687	-104.860192	0.8	1.2
AST06@0-6"	10/21/24	0-0.5	40.396730	-104.860193	0.9	22.4
PWV01-B@4'	10/21/24	4	40.396790	-104.860093	1	2.9
PWV01-N@2'	10/21/24	2	40.396813	-104.860093	0.9	2.7
PWV02-B@4'	10/21/24	4	40.396773	-104.860093	0.9	0.5
PWV02-S@2'	10/21/24	2	40.396758	-104.860095	0.8	0.1
PWV03-B@4'	10/21/24	4	40.396807	-104.860172	0.8	1.1
PWV03-N@2'	10/21/24	2	40.396828	-104.860174	0.8	0.0
PWV04-B@4'	10/21/24	4	40.396782	-104.860168	0.8	9.1
PWV04-W@2'	10/21/24	2	40.396783	-104.860204	0.8	0.2
PWV05-B@4'	10/21/24	4	40.396763	-104.860165	0.8	0.2
PWV05-S@2'	10/21/24	2	40.396743	-104.860170	0.8	0.2
SEP01-FL@4'	10/22/24	4	40.396473	-104.860215	0.8	148
SEP01-DL@4'	10/22/24	4	40.396509	-104.860215	0.8	3.7
SEP02-FL@4'	10/22/24	4	40.396459	-104.860165	0.8	49.5
SEP02-DL@4'	10/22/24	4	40.396483	-104.860167	0.8	9.1
SEP03-FL@4'	10/22/24	4	40.396465	-104.860113	0.8	29.8
SEP03-DL@4'	10/22/24	4	40.396484	-104.860110	0.8	8.8
SEP04-FL@4'	10/22/24	4	40.396463	-104.860076	0.8	1.6
SEP04-DL@4'	10/22/24	4	40.396489	-104.860074	0.8	116
SEP05-FL@4'	10/22/24	4	40.396462	-104.860051	0.8	8.2
SEP05-DL@4'	10/22/24	4	40.396487	-104.860047	0.8	0.8
BKG01@0-6"	10/22/24	0-0.5	40.396460	-104.859456	0.9	1.3
BKG01@2'	10/22/24	2	40.396460	-104.859456	0.9	1.4
BKG01@4'	10/22/24	4	40.396460	-104.859456	0.9	1.3

Notes:

1. Global Positioning System (GPS) data is provided in decimal degrees using North American Datum (NAD) 83 UTM Zone 13 North.

2. Volatile organic compound (VOC) concentrations are measured in the field using a photoionization detector (PID).

PDOP = Position Dilution of Precision

ppm = Parts per million

ft. = Feet

bgs = Below ground surface

TABLE 2
SUMMARY OF VOLATILE ORGANIC SOIL CHEMISTRY DATA
NOBLE ENERGY, INC. - 100322
ROACH BASS T5N-R67W-S14 L01 LOC, WELD COUNTY, COLORADO
REM # 37199

Sample ID	Sample Date	Depth (ft. bgs)	Benzene (mg/kg)	Toluene (mg/kg)	Ethyl-Benzene (mg/kg)	Xylenes (mg/kg)	1,2,4-Trimethyl-Benzene (mg/kg)	1,3,5-Trimethyl-Benzene (mg/kg)	Naphthalene (mg/kg)	TPH (mg/kg)	TPH GRO (mg/kg)	TPH DRO (mg/kg)	TPH ORO (mg/kg)
ECMC Table 915-1 Limits (Residential SSL)			1.2	490	5.8	58	30	27	2	500	500**		
ECMC Table 915-1 Limits (Protection of Groundwater SSL)			0.0026	0.69	0.78	9.9	0.0081	0.0087	0.0038	500	500**		
AST01@0-6"	10/21/24	0-0.5	<0.0020	<0.0050	<0.0050	<0.010	<0.0050	<0.0050	<0.0038	<50	<0.50	<50	<50
AST02@0-6"	10/21/24	0-0.5	<0.0020	<0.0050	<0.0050	<0.010	<0.0050	<0.0050	<0.0038	<50	<0.50	<50	<50
AST03@0-6"	10/21/24	0-0.5	<0.0020	<0.0050	<0.0050	<0.010	<0.0050	<0.0050	<0.0038	<50	<0.50	<50	<50
AST04@0-6"	10/21/24	0-0.5	<0.0020	<0.0050	<0.0050	0.017	0.011	0.0056	<0.0038	410	<0.50	260	150
AST05@0-6"	10/21/24	0-0.5	<0.0020	<0.0050	<0.0050	<0.010	<0.0050	<0.0050	<0.0038	<50	<0.50	<50	<50
AST06@0-6"	10/21/24	0-0.5	<0.0020	0.0092	0.0061	0.069	0.0055	0.037	<0.0038	160	1.5	110	53
PWV01-B@4'	10/21/24	4	<0.0020	<0.0050	<0.0050	<0.010	<0.0050	<0.0050	<0.0038	<50	<0.50	<50	<50
PWV01-N@2'	10/21/24	2	<0.0020	<0.0050	<0.0050	<0.010	<0.0050	<0.0050	<0.0038	<50	<0.50	<50	<50
PWV02-B@4'	10/21/24	4	<0.0020	<0.0050	<0.0050	<0.010	<0.0050	<0.0050	<0.0038	<50	<0.50	<50	<50
PWV02-S@2'	10/21/24	2	<0.0020	<0.0050	<0.0050	<0.010	<0.0050	<0.0050	<0.0038	<50	<0.50	<50	<50
PWV03-B@4'	10/21/24	4	<0.0020	<0.0050	<0.0050	<0.010	<0.0050	<0.0050	<0.0038	<50	<0.50	<50	<50
PWV03-N@2'	10/21/24	2	<0.0020	<0.0050	<0.0050	<0.010	<0.0050	<0.0050	<0.0038	<50	<0.50	<50	<50
PWV04-B@4'	10/21/24	4	0.026	0.19	0.032	0.42	0.12	0.056	0.014	850	3.5	630	220
PWV04-W@2'	10/21/24	2	<0.0020	<0.0050	<0.0050	<0.010	<0.0050	<0.0050	<0.0038	<50	<0.50	<50	<50
PWV05-B@4'	10/21/24	4	<0.0020	<0.0050	<0.0050	<0.010	<0.0050	<0.0050	<0.0038	<50	<0.50	<50	<50
PWV05-S@2'	10/21/24	2	<0.0020	<0.0050	<0.0050	<0.010	<0.0050	<0.0050	<0.0038	<50	<0.50	<50	<50
SEP01-FL@4'	10/22/24	4	<0.0020	<0.0050	<0.0050	0.012	0.0058	<0.0050	<0.0038	<50	<0.50	<50	<50
SEP01-DL@4'	10/22/24	4	<0.0020	<0.0050	<0.0050	<0.010	<0.0050	<0.0050	<0.0038	<50	<0.50	<50	<50
SEP02-FL@4'	10/22/24	4	<0.0020	<0.0050	<0.0050	<0.010	<0.0050	<0.0050	<0.0038	<50	<0.50	<50	<50
SEP02-DL@4'	10/22/24	4	<0.0020	<0.0050	<0.0050	<0.010	<0.0050	<0.0050	<0.0038	<50	<0.50	<50	<50
SEP03-FL@4'	10/22/24	4	<0.0020	<0.0050	<0.0050	<0.010	<0.0050	<0.0050	<0.0038	<50	<0.50	<50	<50
SEP03-DL@4'	10/22/24	4	<0.0020	<0.0050	<0.0050	<0.010	<0.0050	<0.0050	<0.0038	<50	<0.50	<50	<50
SEP04-FL@4'	10/22/24	4	<0.0020	<0.0050	<0.0050	<0.010	<0.0050	<0.0050	<0.0038	<50	<0.50	<50	<50
SEP04-DL@4'	10/22/24	4	<0.0020	<0.0050	<0.0050	<0.010	<0.0050	<0.0050	<0.0038	<50	<0.50	<50	<50
SEP05-FL@4'	10/22/24	4	<0.0020	<0.0050	<0.0050	<0.010	<0.0050	<0.0050	<0.0038	<50	<0.50	<50	<50
SEP05-DL@4'	10/22/24	4	<0.0020	<0.0050	<0.0050	<0.010	<0.0050	<0.0050	<0.0038	<50	<0.50	<50	<50

Notes:

- Bold** values exceed the ECMC Table 915-1 limit(s).
 - Pink & blue highlighted soil analytical values indicate an exceedance of the referenced soil screening level (SSL).
 - * Indicates laboratory minimum detection limit in excess of SSL.
 - ** Summation of GRO+DRO+ORO must be less than 500 mg/kg.
- ECMC = Energy & Carbon Management Commission
(<) = Analytical result is less than the indicated laboratory reporting limit.
TPH-GRO = Total petroleum hydrocarbons - gasoline range organics
TPH-DRO = Total petroleum hydrocarbons - diesel range organics
TPH-ORO = Total petroleum hydrocarbons - oil range organics
mg/kg = Milligrams per kilogram
ft. = Feet
bgs = Below ground surface

TABLE 3
SUMMARY OF POLYCYCLIC AROMATIC HYDROCARBON SOIL CHEMISTRY DATA
NOBLE ENERGY, INC. - 100322
ROACH BASS T5N-R67W-S14 L01 LOC, WELD COUNTY, COLORADO
REM # 37199

Sample ID	Sample Date	Depth (ft. bgs)	Acenaphthene (mg/kg)	Anthracene (mg/kg)	Benzo (a) Anthracene (mg/kg)	Benzo (a) Pyrene (mg/kg)	Benzo (b) Fluoranthene (mg/kg)	Benzo (k) Fluoranthene (mg/kg)	Chrysene (mg/kg)	Dibenzo (a,h) Anthracene (mg/kg)	Fluoranthene (mg/kg)	Fluorene (mg/kg)	Indeno (1,2,3-cd) Pyrene (mg/kg)	Pyrene (mg/kg)	1-Methyl - Naphthalene (mg/kg)	2-Methyl- Naphthalene (mg/kg)
ECMC Table 915-1 Limits (Residential SSL)			360	1,800	1.1	0.11	1.1	11	110	0.11	240	240	1.1	180	18	24
ECMC Table 915-1 Limits (Protection of Groundwater SSL)			0.55	5.8	0.011	0.24	0.3	2.9	9	0.096	8.9	0.54	0.98	1.3	0.006	0.019
AST01@0-6"	10/21/24	0-0.5	<0.00500	<0.00500	<0.00500	<0.00500	<0.00500	<0.00500	<0.00500	<0.00500	<0.00500	<0.00500	<0.00500	<0.00500	<0.00500	<0.00500
AST02@0-6"	10/21/24	0-0.5	<0.00500	<0.00500	<0.00500	<0.00500	<0.00500	<0.00500	<0.00500	<0.00500	<0.00500	<0.00500	<0.00500	<0.00500	<0.00500	<0.00500
AST03@0-6"	10/21/24	0-0.5	<0.00500	<0.00500	<0.00500	<0.00500	<0.00500	<0.00500	<0.00500	<0.00500	<0.00500	<0.00500	<0.00500	<0.00500	<0.00500	<0.00500
AST04@0-6"	10/21/24	0-0.5	<0.00500	<0.00500	<0.00500	<0.00500	<0.00500	<0.00500	<0.00500	<0.00500	<0.00500	<0.00500	<0.00500	<0.00500	0.00682	0.0121
AST05@0-6"	10/21/24	0-0.5	<0.00500	<0.00500	<0.00500	<0.00500	<0.00500	<0.00500	<0.00500	<0.00500	<0.00500	<0.00500	<0.00500	<0.00500	<0.00500	<0.00500
AST06@0-6"	10/21/24	0-0.5	<0.00500	<0.00500	<0.00500	<0.00500	<0.00500	<0.00500	<0.00500	<0.00500	<0.00500	0.0103	<0.00500	<0.00500	0.0662	0.120
PWV01-B@4'	10/21/24	4	<0.00500	<0.00500	<0.00500	<0.00500	<0.00500	<0.00500	<0.00500	<0.00500	<0.00500	<0.00500	<0.00500	<0.00500	<0.00500	<0.00500
PWV01-N@2'	10/21/24	2	<0.00500	<0.00500	<0.00500	<0.00500	<0.00500	<0.00500	<0.00500	<0.00500	<0.00500	<0.00500	<0.00500	<0.00500	<0.00500	0.00523
PWV02-B@4'	10/21/24	4	<0.00500	<0.00500	<0.00500	<0.00500	<0.00500	<0.00500	<0.00500	<0.00500	<0.00500	<0.00500	<0.00500	<0.00500	<0.00500	<0.00500
PWV02-S@2'	10/21/24	2	<0.00500	<0.00500	<0.00500	<0.00500	<0.00500	<0.00500	<0.00500	<0.00500	<0.00500	<0.00500	<0.00500	<0.00500	<0.00500	<0.00500
PWV03-B@4'	10/21/24	4	<0.00500	<0.00500	<0.00500	<0.00500	<0.00500	<0.00500	<0.00500	<0.00500	<0.00500	<0.00500	<0.00500	<0.00500	<0.00500	<0.00500
PWV03-N@2'	10/21/24	2	<0.00500	<0.00500	<0.00500	<0.00500	<0.00500	<0.00500	<0.00500	<0.00500	<0.00500	<0.00500	<0.00500	<0.00500	<0.00500	<0.00500
PWV04-B@4'	10/21/24	4	<0.00500	<0.00500	<0.00500	<0.00500	<0.00500	<0.00500	<0.00500	<0.00500	<0.00500	<0.00500	<0.00500	<0.00500	0.0174	0.0340
PWV04-W@2'	10/21/24	2	<0.00500	<0.00500	<0.00500	<0.00500	<0.00500	<0.00500	<0.00500	<0.00500	<0.00500	<0.00500	<0.00500	<0.00500	<0.00500	<0.00500
PWV05-B@4'	10/21/24	4	<0.00500	<0.00500	<0.00500	<0.00500	<0.00500	<0.00500	<0.00500	<0.00500	<0.00500	<0.00500	<0.00500	<0.00500	<0.00500	<0.00500
PWV05-S@2'	10/21/24	2	<0.00500	<0.00500	<0.00500	<0.00500	<0.00500	<0.00500	<0.00500	<0.00500	<0.00500	<0.00500	<0.00500	<0.00500	<0.00500	<0.00500
SEP01-FL@4'	10/22/24	4	<0.00500	<0.00500	<0.00500	<0.00500	<0.00500	<0.00500	<0.00500	<0.00500	<0.00500	<0.00500	<0.00500	<0.00500	<0.00500	<0.00500
SEP01-DL@4'	10/22/24	4	<0.00500	<0.00500	<0.00500	<0.00500	<0.00500	<0.00500	<0.00500	<0.00500	<0.00500	<0.00500	<0.00500	<0.00500	<0.00500	<0.00500
SEP02-FL@4'	10/22/24	4	<0.00500	<0.00500	<0.00500	<0.00500	<0.00500	<0.00500	<0.00500	<0.00500	<0.00500	<0.00500	<0.00500	<0.00500	<0.00500	<0.00500
SEP02-DL@4'	10/22/24	4	<0.00500	<0.00500	<0.00500	<0.00500	<0.00500	<0.00500	<0.00500	<0.00500	<0.00500	<0.00500	<0.00500	<0.00500	<0.00500	<0.00500
SEP03-FL@4'	10/22/24	4	0.00883	0.0151	0.0144	0.00984	0.0132	<0.00500	0.0135	<0.00500	0.0458	0.0118	0.00813	0.0267	<0.00500	0.00936
SEP03-DL@4'	10/22/24	4	<0.00500	0.0125	<0.00500	<0.00500	<0.00500	<0.00500	<0.00500	<0.00500	<0.00500	<0.00500	<0.00500	<0.00500	0.00581	0.0119
SEP04-FL@4'	10/22/24	4	<0.00500	0.00872	<0.00500	<0.00500	<0.00500	<0.00500	<0.00500	<0.00500	<0.00500	<0.00500	<0.00500	<0.00500	0.00683	0.0138
SEP04-DL@4'	10/22/24	4	<0.00500	<0.00500	<0.00500	<0.00500	<0.00500	<0.00500	<0.00500	<0.00500	<0.00500	<0.00500	<0.00500	<0.00500	<0.00500	<0.00500
SEP05-FL@4'	10/22/24	4	<0.00500	0.00600	<0.00500	<0.00500	<0.00500	<0.00500	<0.00500	<0.00500	<0.00500	<0.00500	<0.00500	<0.00500	<0.00500	<0.00500
SEP05-DL@4'	10/22/24	4	<0.00500	<0.00500	<0.00500	<0.00500	<0.00500	<0.00500	<0.00500	<0.00500	<0.00500	<0.00500	<0.00500	<0.00500	<0.00500	<0.00500

Notes:

1. **Bold** values exceed the ECMC Table 915-1 limit(s).
2. Pink & blue highlighted soil analytical values indicate an exceedance of the referenced soil screening level (SSL).
3. * Indicates laboratory minimum detection limit in excess of SSL.

ECMC = Colorado Energy & Carbon Management Commission

(<) = Analytical result is less than the indicated laboratory reporting limit.

ft. = Feet

bgs = Below ground surface

mg/kg = Milligrams per kilogram

TABLE 4
SUMMARY OF SOIL SUITABILITY FOR RECLAMATION
NOBLE ENERGY, INC. - 100322
ROACH BASS T5N-R67W-S14 L01 LOC, WELD COUNTY, COLORADO
REM # 37199

Sample ID	Sample Date	Depth (ft. bgs)	pH (Standard Units)	EC (mmhos/cm)	SAR (Standard Units)	Boron (mg/L)
ECMC Table 915-1 Soil Suitability Limits			6 - 8.3	<4	<6	2
AST01@0-6"	10/21/24	0-0.5	8.97	0.0987	0.0177	<2.00
AST02@0-6"	10/21/24	0-0.5	9.11	0.0940	0.0108	<2.00
AST03@0-6"	10/21/24	0-0.5	7.78	0.327	0.291	<2.00
AST04@0-6"	10/21/24	0-0.5	8.86	0.175	0.217	<2.00
AST05@0-6"	10/21/24	0-0.5	8.54	0.180	0.0407	<2.00
AST06@0-6"	10/21/24	0-0.5	8.47	0.245	0.451	<2.00
PWV01-B@4'	10/21/24	4	8.81	0.137	0.0963	<2.00
PWV01-N@2'	10/21/24	2	9.02	0.119	0.177	<2.00
PWV02-B@4'	10/21/24	4	8.72	0.127	0.0738	<2.00
PWV02-S@2'	10/21/24	2	8.29	0.258	0.126	<2.00
PWV03-B@4'	10/21/24	4	8.65	0.159	0.110	<2.00
PWV03-N@2'	10/21/24	2	8.56	0.184	0.127	<2.00
PWV04-B@4'	10/21/24	4	9.19	0.184	0.365	<2.00
PWV04-W@2'	10/21/24	2	8.43	0.219	0.160	<2.00
PWV05-B@4'	10/21/24	4	8.86	0.240	0.367	<2.00
PWV05-S@2'	10/21/24	2	8.38	0.211	0.0280	<2.00
SEP01-FL@4'	10/22/24	4	8.58	0.214	0.141	<2.00
SEP01-DL@4'	10/22/24	4	8.48	0.261	0.172	<2.00
SEP02-FL@4'	10/22/24	4	8.62	0.176	0.0633	<2.00
SEP02-DL@4'	10/22/24	4	8.49	0.184	0.155	<2.00
SEP03-FL@4'	10/22/24	4	8.40	0.165	0.0486	<2.00
SEP03-DL@4'	10/22/24	4	8.61	0.167	0.162	<2.00
SEP04-FL@4'	10/22/24	4	8.59	0.158	0.153	<2.00

Sample ID	Sample Date	Depth (ft. bgs)	pH (Standard Units)	EC (mmhos/cm)	SAR (Standard Units)	Boron (mg/L)
ECMC Table 915-1 Soil Suitability Limits			6 - 8.3	<4	<6	2
SEP04-DL@4'	10/22/24	4	8.70	0.150	0.0491	<2.00
SEP05-FL@4'	10/22/24	4	8.56	0.212	0.343	<2.00
SEP05-DL@4'	10/22/24	4	8.33	0.219	0.0601	<2.00
BKG01@0-6"	10/22/24	0-0.5	7.25	0.154	0.0910	<2.00
BKG01@2'	10/22/24	2	7.44	0.177	0.161	<2.00
BKG01@4'	10/22/24	4	7.50	0.239	0.0454	<2.00
Maximum Background Concentration			7.50	-	-	-
Mean Background Concentration			7.40	-	-	-

Notes:

1. **Bold** faced values exceed the ECMC Table 915-1 limit(s), but are within background concentrations.
2. **Bold** faced values exceed the ECMC Table 915-1 limit(s) and native background concentrations.
3. Brown highlighted soil analytical values indicate a regulatory exceedance.

ECMC = Colorado Energy & Carbon Management Commission

EC = Electrical conductivity

SAR = Sodium adsorption ratio

mmhos/cm = millimhos per centimeter

TABLE 5
SUMMARY OF METALS IN SOIL CHEMISTRY DATA
NOBLE ENERGY, INC. - 100322
ROACH BASS T5N-R67W-S14 L01 LOC, WELD COUNTY, COLORADO
REM # 37199

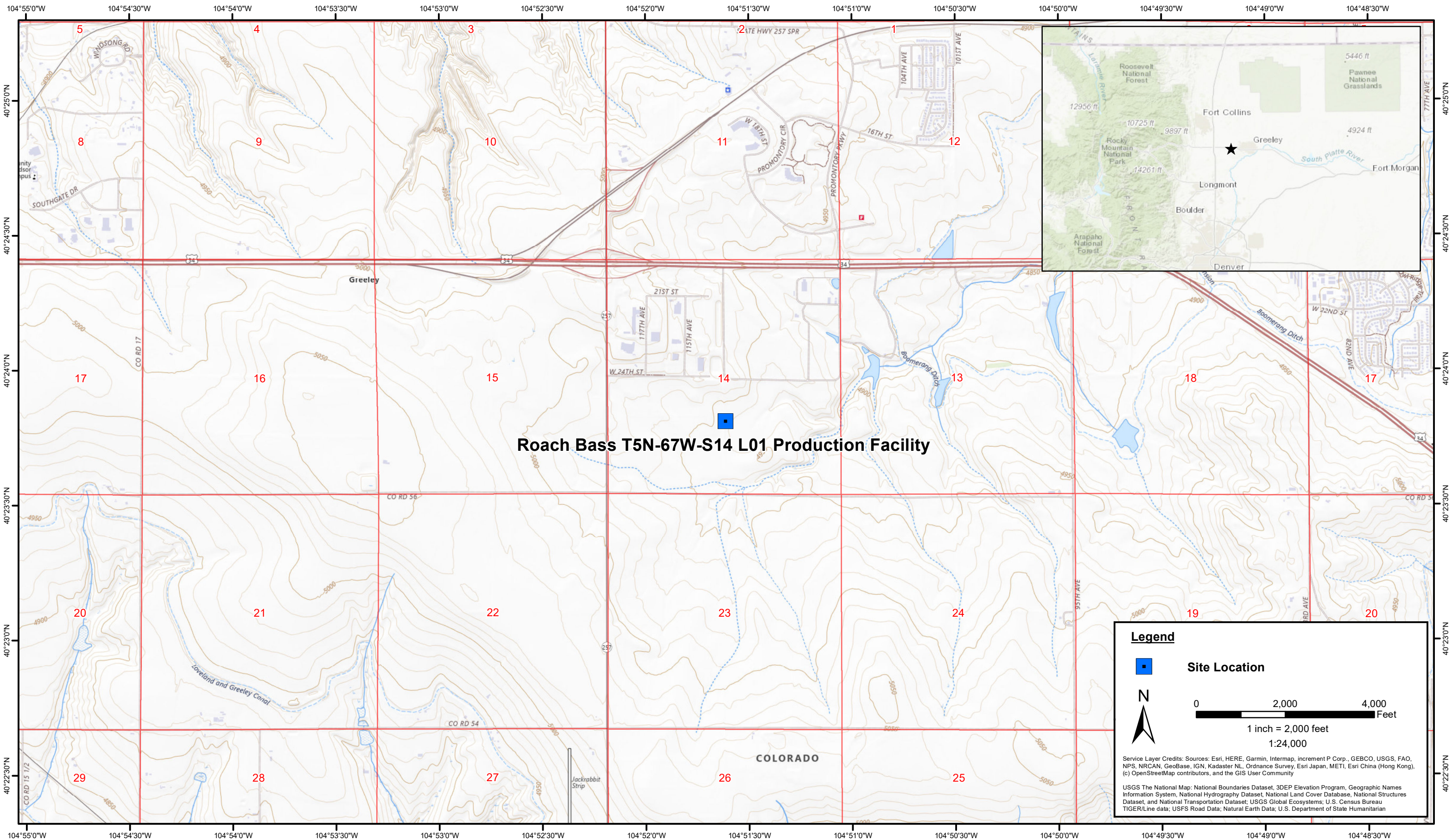
Sample ID	Sample Date	Depth (ft. bgs)	Arsenic (mg/kg)	Barium (mg/kg)	Cadmium (mg/kg)	Chromium (VI) ^[4] (mg/kg)	Copper (mg/kg)	Lead (mg/kg)	Nickel (mg/kg)	Selenium (mg/kg)	Silver (mg/kg)	Zinc (mg/kg)
ECMC Table 915-1 Limits (Residential SSL)			0.68	15,000	71	0.3	3,100	400	1,500	390	390	23,000
ECMC Table 915-1 Limits (Protection of Groundwater SSL)			0.29	82	0.38	0.00067	46	14	26	0.26	0.8	370
AST01@0-6"	10/21/24	0-0.5	2.75	68.0	<0.200	<0.30*	4.80	5.79	5.11	<0.260	<0.0200	17.9
AST02@0-6"	10/21/24	0-0.5	4.03	126	0.234	<0.30*	5.99	8.14	6.73	<0.260	0.0321	22.0
AST03@0-6"	10/21/24	0-0.5	5.33	79.2	0.316	<0.30*	7.08	11.1	18.9	<0.260	0.0545	26.4
AST04@0-6"	10/21/24	0-0.5	3.10	176	0.242	<0.30*	5.85	7.11	5.85	<0.260	0.0262	20.8
AST05@0-6"	10/21/24	0-0.5	4.21	127	0.242	<0.30*	6.71	9.21	6.94	<0.260	0.0348	24.1
AST06@0-6"	10/21/24	0-0.5	2.94	72.5	0.284	<0.30*	6.11	5.88	5.70	<0.260	0.0230	21.2
PWV01-B@4'	10/21/24	4	1.61	30.1	<0.200	<0.30*	3.04	3.30	3.62	<0.260	<0.0200	12.4
PWV01-N@2'	10/21/24	2	1.88	41.2	<0.200	<0.30*	3.54	3.79	3.59	<0.260	<0.0200	12.9
PWV02-B@4'	10/21/24	4	5.29	144	0.313	<0.30*	7.48	9.57	8.35	<0.260	0.0516	26.3
PWV02-S@2'	10/21/24	2	4.42	101	0.221	<0.30*	6.65	8.85	7.51	<0.260	0.0364	24.5
PWV03-B@4'	10/21/24	4	4.28	114	0.233	<0.30*	6.38	8.55	7.47	<0.260	0.0336	24.3
PWV03-N@2'	10/21/24	2	4.95	148	0.265	<0.30*	6.94	9.65	8.28	<0.260	0.0438	26.1
PWV04-B@4'	10/21/24	4	3.54	90.2	<0.200	<0.30*	5.53	6.87	6.36	<0.260	0.0248	20.8
PWV04-W@2'	10/21/24	2	3.18	81.3	<0.200	<0.30*	5.37	6.57	5.97	<0.260	0.0252	20.2
PWV05-B@4'	10/21/24	4	5.54	203	0.289	<0.30*	6.85	10.5	8.59	<0.260	0.0407	27.1
PWV05-S@2'	10/21/24	2	0.916	30.3	<0.200	<0.30*	2.18	3.26	1.94	<0.260	<0.0200	8.90
SEP01-FL@4'	10/22/24	4	3.83	99.3	0.250	<0.30*	6.12	8.02	6.89	<0.260	0.0408	22.8
SEP01-DL@4'	10/22/24	4	3.18	78.8	0.215	<0.30*	5.98	7.08	6.27	<0.260	0.0357	23.1
SEP02-FL@4'	10/22/24	4	3.14	80.0	0.230	<0.30*	5.97	7.54	5.94	<0.260	0.0320	21.1
SEP02-DL@4'	10/22/24	4	3.24	81.1	0.206	<0.30*	5.53	6.82	5.87	<0.260	0.0332	21.1
SEP03-FL@4'	10/22/24	4	4.29	105	0.281	<0.30*	6.45	9.13	7.21	<0.260	0.0442	23.9
SEP03-DL@4'	10/22/24	4	3.45	91.9	0.219	<0.30*	6.06	7.85	6.48	<0.260	0.0370	21.9
SEP04-FL@4'	10/22/24	4	4.22	115	0.266	<0.30*	6.39	8.44	7.38	<0.260	0.0414	24.1
SEP04-DL@4'	10/22/24	4	2.15	50.2	<0.200	<0.30*	4.98	4.81	4.23	<0.260	0.0232	16.9
SEP05-FL@4'	10/22/24	4	4.26	123	0.277	<0.30*	6.31	8.35	7.51	<0.260	0.0425	24.0
SEP05-DL@4'	10/22/24	4	4.50	119	0.292	<0.30*	6.68	9.13	7.70	<0.260	0.0458	25.3
BKG01@0-6"	10/22/24	0-0.5	5.17	135	0.360	<0.30*	7.56	12.9	9.52	<0.260	0.0792	29.5
BKG01@2'	10/22/24	2	5.26	128	0.333	<0.30*	7.06	11.9	8.62	<0.260	0.0830	27.9
BKG01@4'	10/22/24	4	4.30	128	0.367	<0.30*	6.90	12.2	8.68	<0.260	0.0591	26.5
Maximum Background Concentration			5.26	135	-	-	-	-	-	-	-	-
Maximum Background Concentration X 1.25			6.58	169	-	-	-	-	-	-	-	-
Mean Background Concentration			4.91	130	-	-	-	-	-	-	-	-
Mean Background Concentration X 1.25			6.14	163	-	-	-	-	-	-	-	-

Notes:

1. **Bold** faced values exceed the ECMC Table 915-1 limit(s), but are within 1.25x background concentrations.
2. **Bold** faced values exceed the ECMC Table 915-1 limit(s) and native background concentrations.
3. Red & blue highlighted soil analytical values indicate an exceedance of the referenced soil screening level (SSL).
4. Compound falls within ECMC Table 915-1 Footnote 9.
5. Non-detect background results accounted for in the highest background concentration by using the reporting limit.

ECMC = Energy & Carbon Management Commission

(<) = Analytical result is less than the indicated laboratory reporting limit.



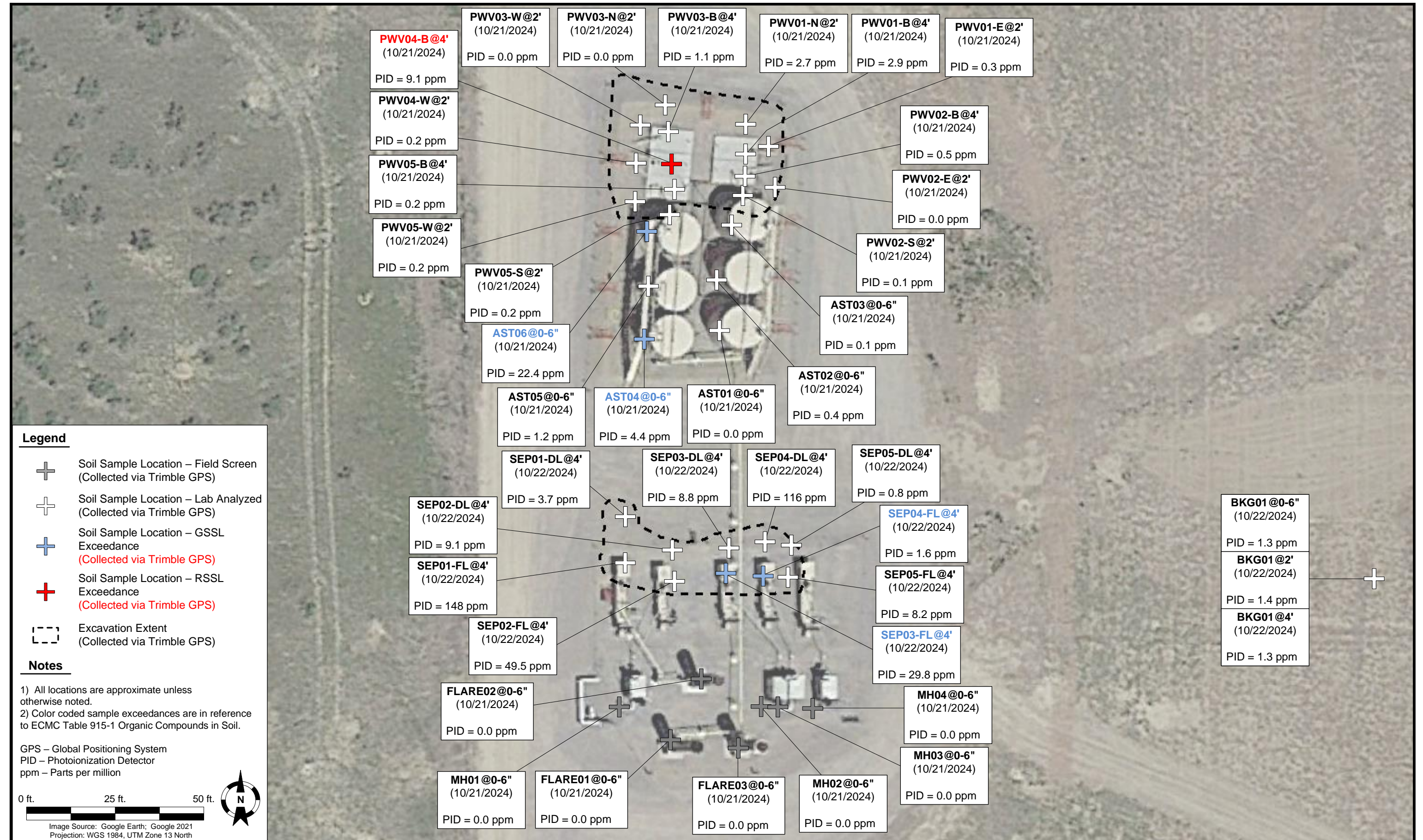
DATE: October 2024
 DESIGNED BY: J. Whritenour
 DRAWN BY: L. Reed

 **Tasman, Inc.**
 6855 W. 119th Ave
 Broomfield, CO 80020

Noble Energy Inc. - 100322 - DJ Basin
Roach Bass T5N-67W-S14 L01 Production Facility
 NWSE, Section 14, Township 5 North, Range 67 West
 Weld County, Colorado

Site Location Map

Figure 1



DATE: October 22, 2024

DESIGNED BY: J. Whritenour

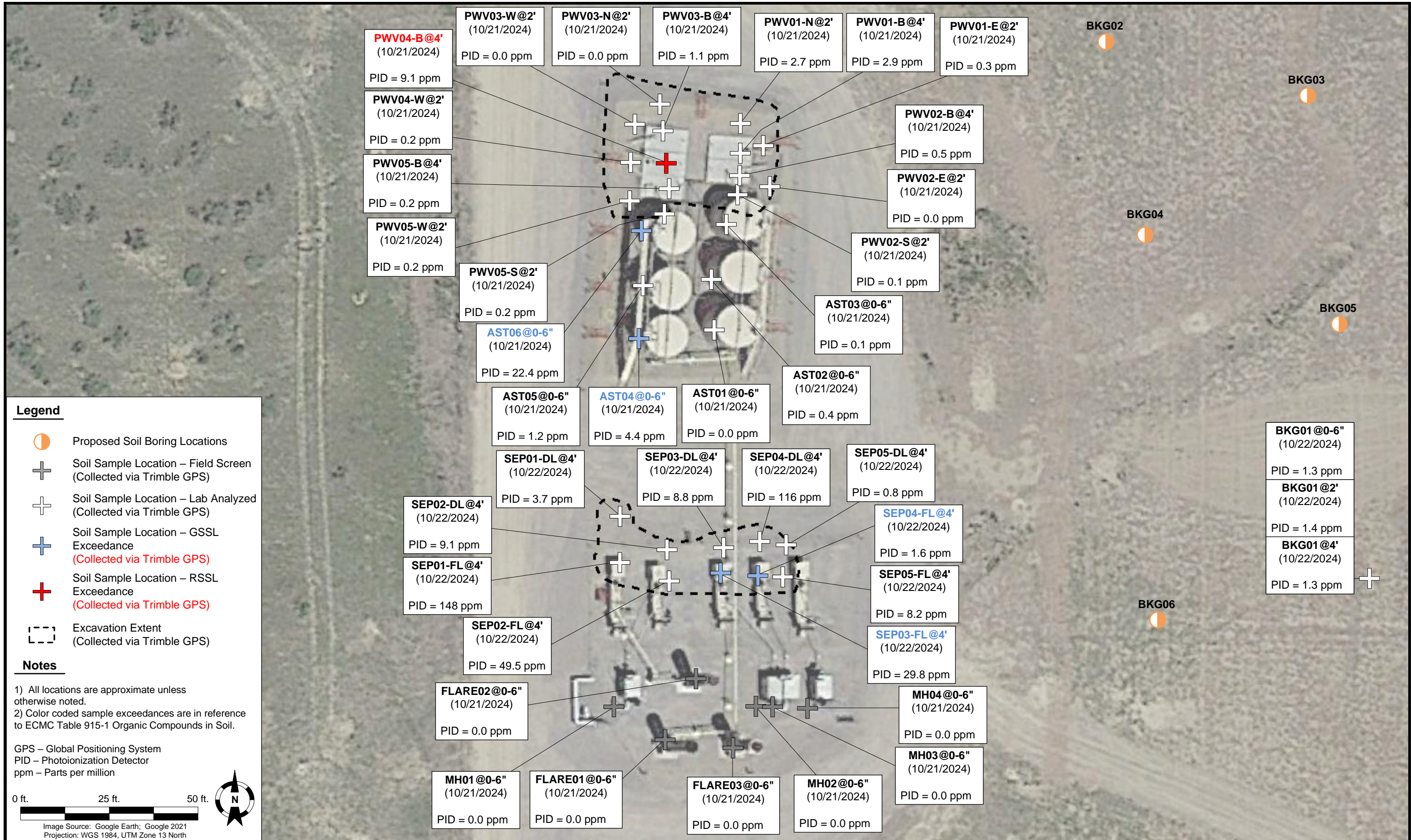
DRAWN BY: L. Reed



Noble Energy, Inc. – 100322 – DJ Basin
Roach Bass T5N-67W-S14 L01 Production Facility
 NWSE, Section 14, Township 5 North, Range 67 West
 Weld County, Colorado

SOIL SAMPLE
 LOCATION MAP
 (TANK BATTERY)

FIGURE
 2



DATE: October 22, 2024

DESIGNED BY: J. Whritenour

DRAWN BY: J. Gustafson



Noble Energy, Inc. – 100322 – DJ Basin
Roach Bass T5N-67W-S14 L01 Production Facility
 NWSE, Section 14, Township 5 North, Range 67 West
 Weld County, Colorado

PROPOSED SOIL BORING MAP

FIGURE 3