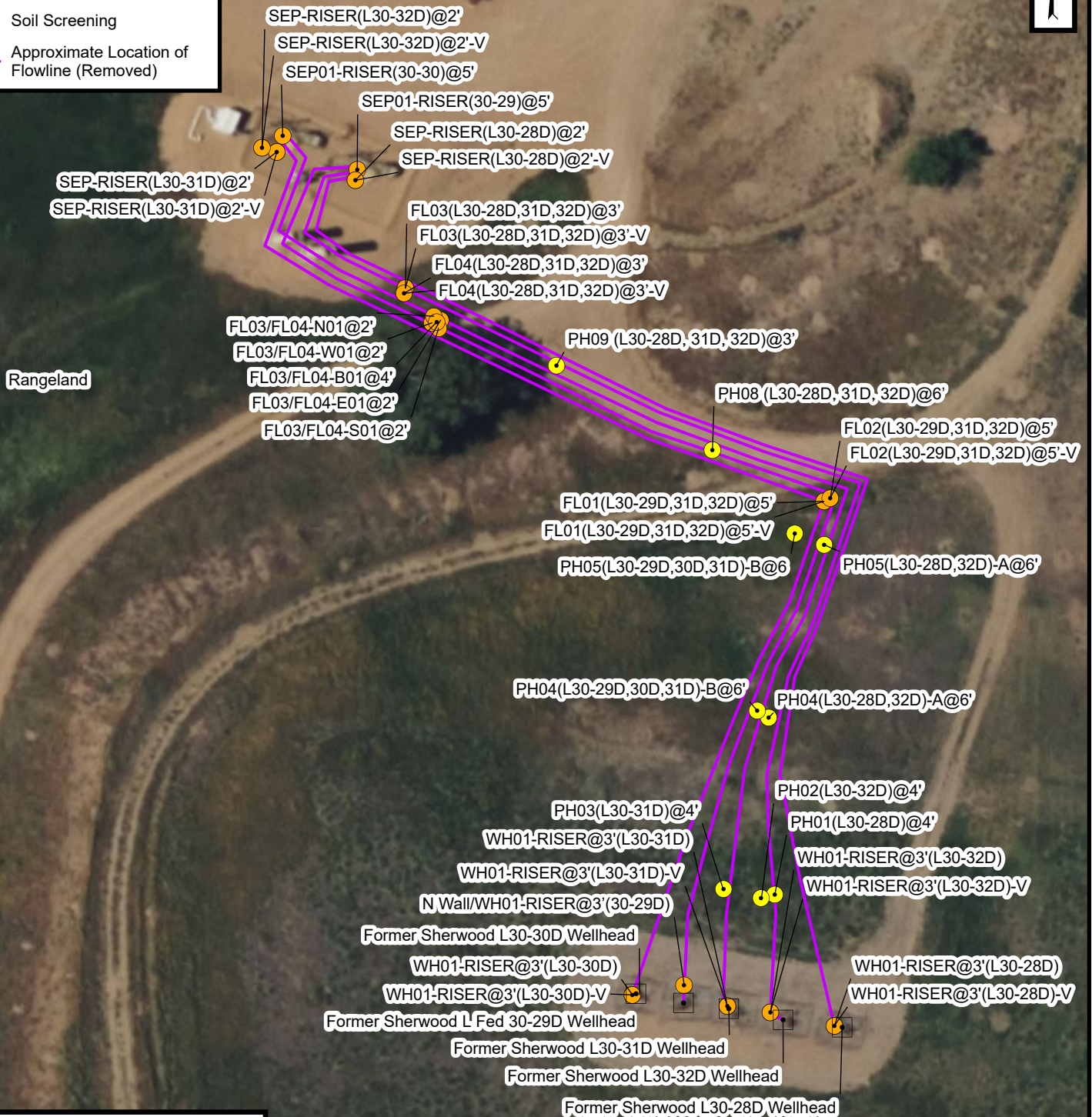


Legend

- P&A'd Wellhead
- Soil Sample
- Soil Screening
- Approximate Location of Flowline (Removed)



Sources: Environmental Systems Research Institute (ESRI)



Flowline Excavation Site Map

Sherwood L Fed 30-29D and L30-28D, 30D, 31D, 32D Flowlines
Kerr-McGee Oil & Gas Onshore, LP
NWNW Sec 30-T3N-R66W
Weld County, Colorado

Project Number: 09A1417184

FIGURE

2