

TABLE 1
SUMMARY OF GROUNDWATER ELEVATION DATA AND ORGANIC CHEMISTRY DATA
PDC ENERGY INC.
SRC NELSON, WELD COUNTY, COLORADO
FREMONT PROJECT NO. C023-109

Sample ID	Sample Date	Benzene (µg/L)	Toluene (µg/L)	Ethyl-Benzene (µg/L)	Xylenes (µg/L)	Naphthalene (µg/L)	1,2,4- Trimethyl- Benzene (µg/L)	1,3,5- Trimethyl- Benzene (µg/L)	TOC Elevation (ft)	Depth to Groundwater (ft)	Groundwater Elevation (ft)	LNAPL Thickness (ft)
ECMC Table 915-1 Limits		5.0	560	700	1400	140	67	67				
MW-1	12/21/2023	<1.0	<1.0	<1.0	<2.0	<1.0	<1.0	<1.0	99.70	7.95	91.75	NP
	3/27/2024	<1.0	<1.0	<1.0	<2.0	<1.0	<1.0	<1.0		8.92	90.78	NP
	6/26/2024	<1.0	<1.0	<1.0	<2.0	<1.0	<1.0	<1.0		6.88	92.82	NP
	9/4/2024	<1.0	<1.0	<1.0	<2.0	<1.0	<1.0	<1.0		6.56	93.14	NP
	12/4/2024	<1.0	<1.0	<1.0	<2.0	<1.0	<1.0	<1.0		7.27	92.43	NP
MW-2	12/21/2023	<1.0	<1.0	<1.0	<2.0	<1.0	<1.0	<1.0	99.85	8.2	91.65	NP
	3/27/2024	<1.0	<1.0	<1.0	<2.0	<1.0	<1.0	<1.0		9.21	90.64	NP
	6/26/2024	<1.0	<1.0	<1.0	<2.0	<1.0	<1.0	<1.0		7.16	92.69	NP
	9/4/2024	Buried	Buried	Buried	Buried	Buried	Buried	Buried		NM	NM	NM
	12/4/2024	Buried	Buried	Buried	Buried	Buried	Buried	Buried		NM	NM	NM
MW-3	12/21/2023	<1.0	<1.0	<1.0	<2.0	<1.0	<1.0	<1.0	99.09	6.91	92.18	NP
	3/27/2024	<1.0	<1.0	<1.0	<2.0	<1.0	<1.0	<1.0		7.97	91.12	NP
	6/26/2024	<1.0	<1.0	<1.0	<2.0	<1.0	<1.0	<1.0		5.92	93.17	NP
	9/4/2024	Buried	Buried	Buried	Buried	Buried	Buried	Buried		NM	NM	NM
	12/4/2024	Buried	Buried	Buried	Buried	Buried	Buried	Buried		NM	NM	NM
MW-4	12/21/2023	<1.0	<1.0	<1.0	<2.0	<1.0	<1.0	<1.0	99.49	7.19	92.30	NP
	3/27/2024	<1.0	<1.0	<1.0	<2.0	<1.0	<1.0	<1.0		8.25	91.24	NP
	6/26/2024	<1.0	<1.0	<1.0	<2.0	<1.0	<1.0	<1.0		6.16	93.33	NP
	9/4/2024	Buried	Buried	Buried	Buried	Buried	Buried	Buried		NM	NM	NM
	12/4/2024	Buried	Buried	Buried	Buried	Buried	Buried	Buried		NM	NM	NM
MW-5	12/21/2023	<1.0	<1.0	<1.0	<2.0	<1.0	<1.0	<1.0	99.34	7.38	91.96	NP
	3/27/2024	<1.0	<1.0	<1.0	<2.0	<1.0	<1.0	<1.0		8.41	90.93	NP
	6/26/2024	<1.0	<1.0	<1.0	<2.0	<1.0	<1.0	<1.0		6.35	92.99	NP
	9/4/2024	Buried	Buried	Buried	Buried	Buried	Buried	Buried		NM	NM	NM
	12/4/2024	Buried	Buried	Buried	Buried	Buried	Buried	Buried		NM	NM	NM
MW-6	12/21/2023	<1.0	<1.0	<1.0	<2.0	<1.0	<1.0	<1.0	99.83	8.07	91.76	NP
	3/27/2024	<1.0	<1.0	<1.0	<2.0	<1.0	<1.0	<1.0		9.08	90.75	NP
	6/26/2024	<1.0	<1.0	<1.0	<2.0	<1.0	<1.0	<1.0		7.04	92.79	NP
	9/4/2024	<1.0	<1.0	<1.0	<2.0	<1.0	<1.0	<1.0		6.70	93.13	NP
	12/4/2024	<1.0	<1.0	<1.0	<2.0	<1.0	<1.0	<1.0		7.36	92.47	NP

MW-7	12/21/2023	<1.0	<1.0	<1.0	<2.0	<1.0	<1.0	<1.0	100.00	8.62	91.38	NP
	3/27/2024	<1.0	<1.0	<1.0	<2.0	<1.0	<1.0	<1.0		9.59	90.41	NP
	6/26/2024	<1.0	<1.0	<1.0	<2.0	<1.0	<1.0	<1.0		7.58	92.42	NP
	9/4/2024	<1.0	<1.0	<1.0	<2.0	<1.0	<1.0	<1.0		7.26	92.74	NP
	12/4/2024	<1.0	<1.0	<1.0	<2.0	<1.0	<1.0	<1.0		7.91	92.09	NP
MW-8	12/21/2023	<1.0	<1.0	<1.0	<2.0	<1.0	<1.0	<1.0	99.75	8.29	91.46	NP
	3/27/2024	<1.0	<1.0	<1.0	<2.0	<1.0	<1.0	<1.0		9.26	90.49	NP
	6/26/2024	<1.0	<1.0	<1.0	<2.0	<1.0	<1.0	<1.0		7.20	92.55	NP
	9/4/2024	<1.0	<1.0	<1.0	<2.0	<1.0	<1.0	<1.0		6.92	92.83	NP
	12/4/2024	<1.0	<1.0	<1.0	<2.0	<1.0	<1.0	<1.0		7.60	92.15	NP

Bold face values exceed the ECMC limits

Red highlighted 915-1 Limits indicate the referenced groundwater screening level

"Buried" on 9/4/24 indicates that the farmer had buried the flush-mount well vaults in manure; therefore, wells were inaccessible.

NP - No measureable LNAPL

NA - Not Analyzed

TABLE 2
SUMMARY OF INORGANIC GROUNDWATER CHEMISTRY DATA
PDC ENERGY INC.
SRC NELSON TANK BATTERY, WELD COUNTY, COLORADO
FREMONT PROJECT NO. C023-109

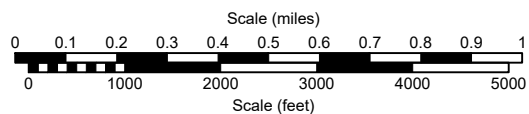
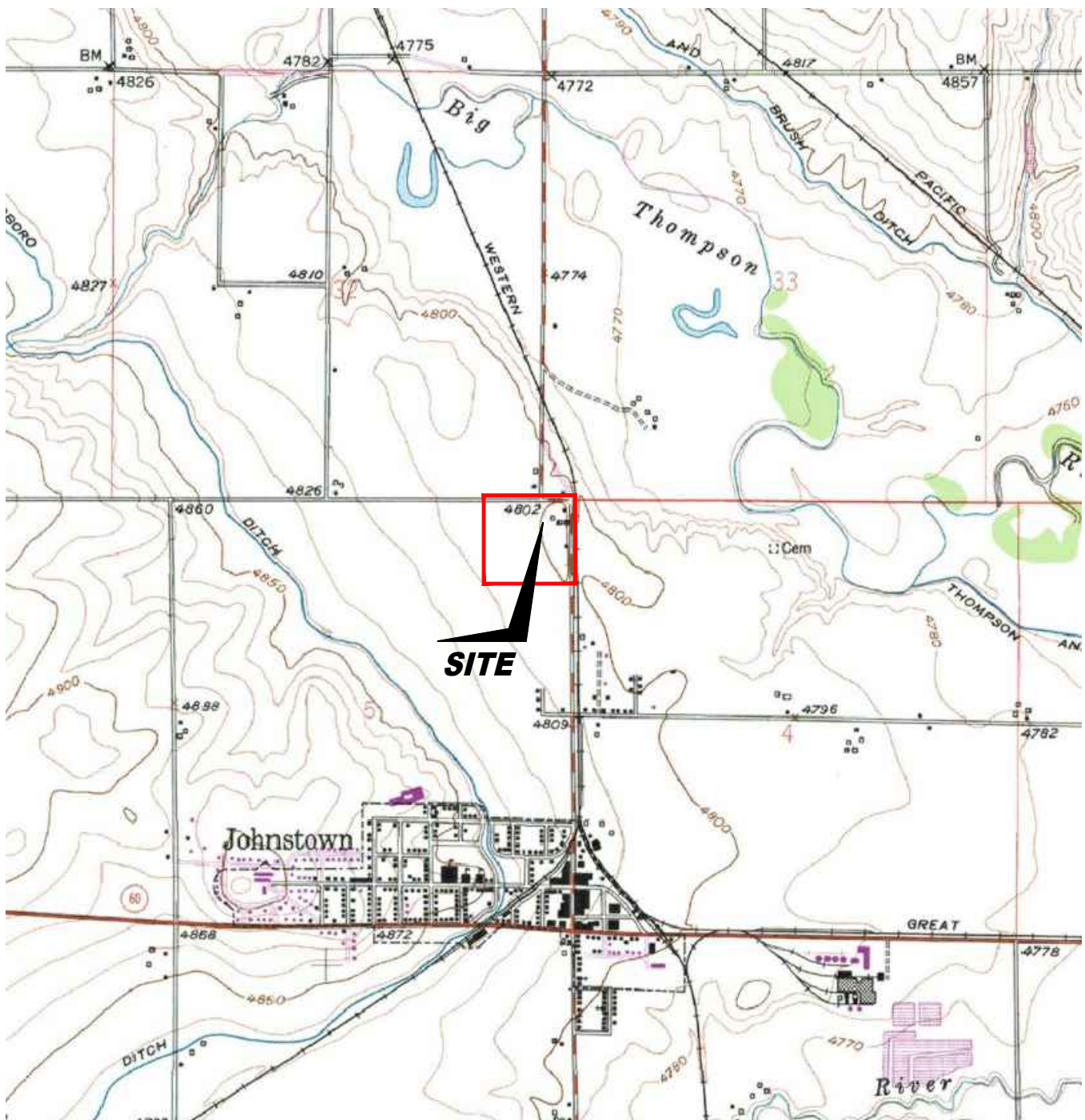
Sample ID	Sample Date	Total Dissolved Solids (mg/L)	Chloride Ion (mg/L)	Sulfate Ion (mg/L)
ECMC Table 915-1 Limits		<1.25 x local background	250 or <1.25 x local background	250 or <1.25 x local background
Site Specific Background		939	250	636
MW-1	12/21/2023	885	38.8	437
	3/27/2024	932	33.4	416
	6/26/2024	712	25.7	458
	9/4/2024	791	38.2	496
	12/4/2024	1200	41.9	646
MW-2	12/21/2023	858	38.4	435
	3/27/2024	964	35.0	404
	6/26/2024	737	37.5	515
	9/4/2024	Buried	Buried	Buried
	12/4/2024	Buried	Buried	Buried
MW-3	12/21/2023	906	37.2	403
	3/27/2024	1060	72.8	362
	6/26/2024	783	74.3	426
	9/4/2024	Buried	Buried	Buried
	12/4/2024	Buried	Buried	Buried
MW-4	12/21/2023	870	36.8	394
	3/27/2024	939	29.4	386
	6/26/2024	751	38.1	509
	9/4/2024	Buried	Buried	Buried
	12/4/2024	Buried	Buried	Buried
MW-5	12/21/2023	882	30.8	424
	3/27/2024	1430	124	556
	6/26/2024	799	31.7	505
	9/4/2024	Buried	Buried	Buried
	12/4/2024	Buried	Buried	Buried
MW-6	12/21/2023	848	27.4	428
	3/27/2024	795	31.0	267
	6/26/2024	768	35.5	511
	9/4/2024	843	35.4	562
	12/4/2024	1270	49.3	648
MW-7	12/21/2023	845	24.0	392
	3/27/2024	880	25.4	404
	6/26/2024	741	23.6	499
	9/4/2024	844	35.1	540
	12/4/2024	1280	39.4	649
MW-8	12/21/2023	833	29.0	437
	3/27/2024	928	27.8	410
	6/26/2024	709	36.3	537
	9/4/2024	786	34.3	509
	12/4/2024	1240	39.6	660

Bold face values exceed the ECMC limits

Yellow highlighted 915-1 Limits indicate the referenced groundwater screening level

"Buried" on 9/4/24 and 12/4/24 indicates that the farmer had buried the flush-mount well vaults in manure; therefore, wells were inaccessible.

Use MW-4 as the upgradient well



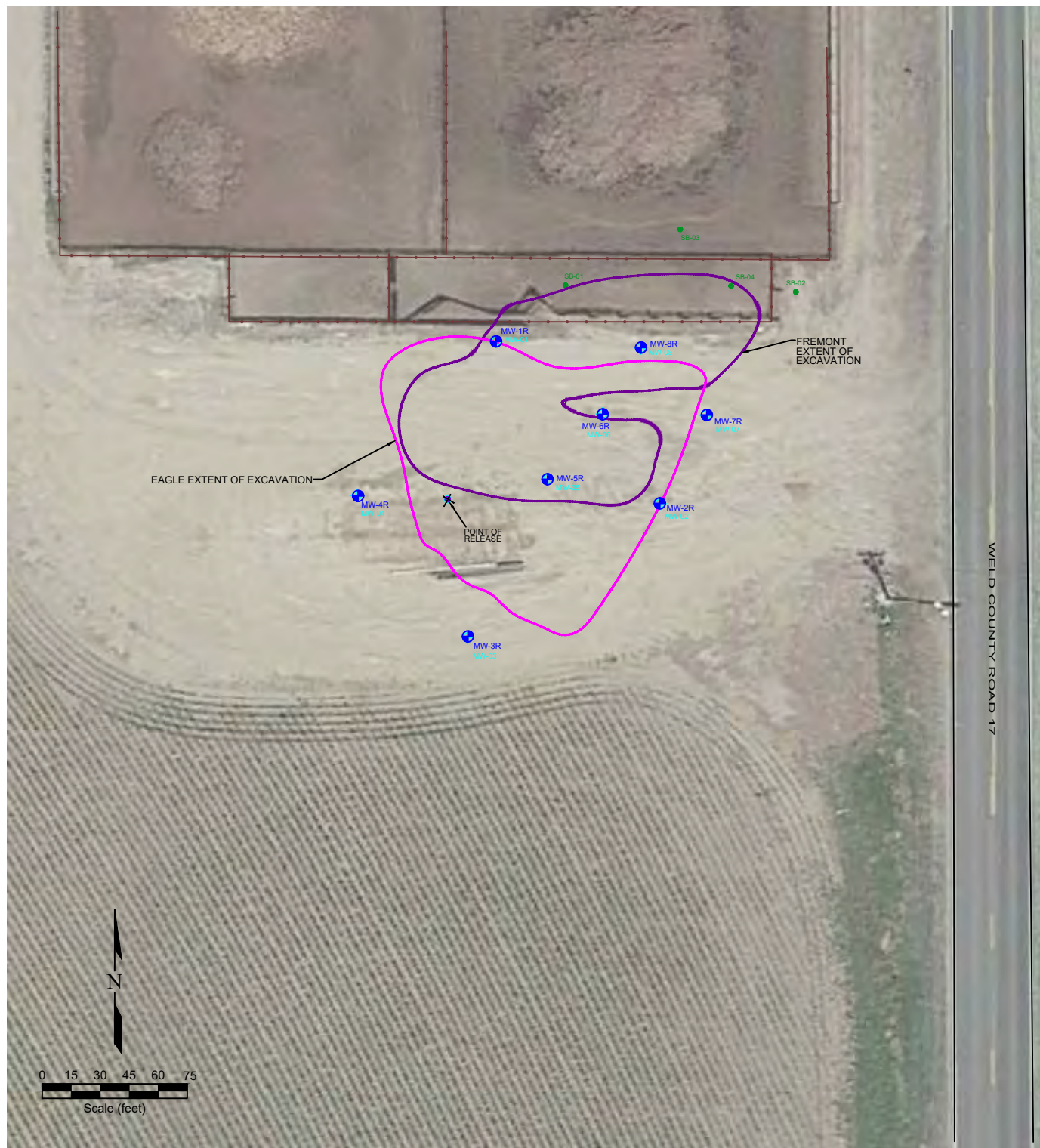
USGS 7.5 MINUTE SERIES (TOPOGRAPHIC)

Figure 1
SITE LOCATION MAP

PDC Energy, Inc. ~ Nelson Tank Battery
NENE Sec. 5, T4N, R67W, 6th PM
Weld County, Colorado
40.347524°, -104.906878°

Project # C023-109	API #	Facility #
Date 12/23/24	Remediation #	Filename 23109T





LEGEND

- SOIL BORING LOCATION
- MONITORING WELL LOCATION
- DESTROYED MONITORING WELL
- POINT OF RELEASE
- FREMONT EXCAVATION EXTENT
- EAGLE EXTENT OF EXCAVATION
- FENCE LINE

Figure 2
SITE MAP

PDC Energy, Inc. ~ Nelson Tank Battery
NENE Sec. 5, T4N, R67W, 6th PM
Weld County, Colorado
40.347524°, -104.906878°

Project No. C023-109	API #	Facility #	
Date 12/23/2024	Remediation #	Filename 23109Q1	



LEGEND

- SOIL BORING LOCATION
- ⊕ MONITORING WELL LOCATION
- ⊕ DESTROYED MONITORING WELL
- POINT OF RELEASE
- FREMONT EXCAVATION EXTENT
- EAGLE EXTENT OF EXCAVATION
- FENCE LINE
- (91.75) GROUND WATER ELEVATION (ft above arbitrary datum)
- NM NOT MEASURED
- WATER TABLE CONTOUR
- GROUND WATER FLOW DIRECTION

Figure 3

INFERRED GROUNDWATER CONTOUR MAP December 4, 2024

PDC Energy, Inc. ~ Nelson Tank Battery
NENE Sec. 5, T4N, R67W, 6th PM
Weld County, Colorado
40.347524°, -104.906878°

Project No. C023-109	API #	Facility #	REMONTE ENVIRONMENTAL
Date 12/23/2024	Remediation #	Filename 23109Q1	

