

Comp. CIVITAS
 Well FLANIGAN 1B-6H
 Field Wattenberg
 Co. Weld
 State Colorado

Company **CIVITAS**
 Well **FLANIGAN 1B-6H**
 Field **Wattenberg**
 County **Weld** State **Colorado**

Location: **SEC 6 TWP 1N RGE 64W**
 API #: 05-123-35695
 NW/NE
 Elevation 4997
 Above Perm. Datum
 Permanent Datum GL
 Log Measured From KB 13
 Drilling Measured From KB
 Other Services
 Elevation
 K.B. 5010
 D.F. 5009
 G.L. 4997

Date of Service	11/15/2024				
Run Number	ONE				
Depth Driller or PBTID	11455				
Depth Logger	7188				
Bottom Log Interval	7192				
Top Log Interval	SURFACE				
Open Hole Size	7.875				
Type Fluid	WATER				
Fluid Level	Full				
Fluid Density	N/A				
Max. Recorded Temperature	N/A				
Max. Wellhead Pressure	0				
Wellhead Connection	N/A				
Estimated Cement Top	SEE LOG				
Unit Number	5076				
Wireline Size	9/32				
Location	GREELEY CO				
Recorded By	CODY JENSEN				
Witnessed By	MIKE COLE				
Tubing Record		Size	WWt	Top	Bottom
Surface Casing					
Production Casing					
Liner Record					

<<< Fold Here >>>

All interpretations are opinions based on inferences from electrical or other measurements and Pioneer Wireline Services, LLC cannot and does not guarantee the accuracy or correctness of any interpretation, and Pioneer Wireline Services, LLC will not be liable or responsible for any loss, costs, damages, or expenses incurred or sustained by anyone resulting from any interpretation made by any of our officers, agents or employees.

Comments

N/A DENOTES NOT AVAILABLE OR NON-APPLICABLE.
 LOG WAS RAN UNDER LESS THAN OPTIOMAL CONDITIONS. WELLBORE FLUID CONTAINED COMINGLED GAS, OIL AND, WATER DUE TO OPEN PERFERATIONS BELOW POINT OF REFUSAL
 RECORDED DATA ABOVE 4750 IS UNRELIABLE DUE TO COMINGLED FLUID.

THANK YOU FOR USING PIONEER ENERGY SERVICES!

Your Pioneer Energy Services Crew		Tool Data - Services	Serial Number
Engineer:			
Operator:			
Operator:			
Operator:			

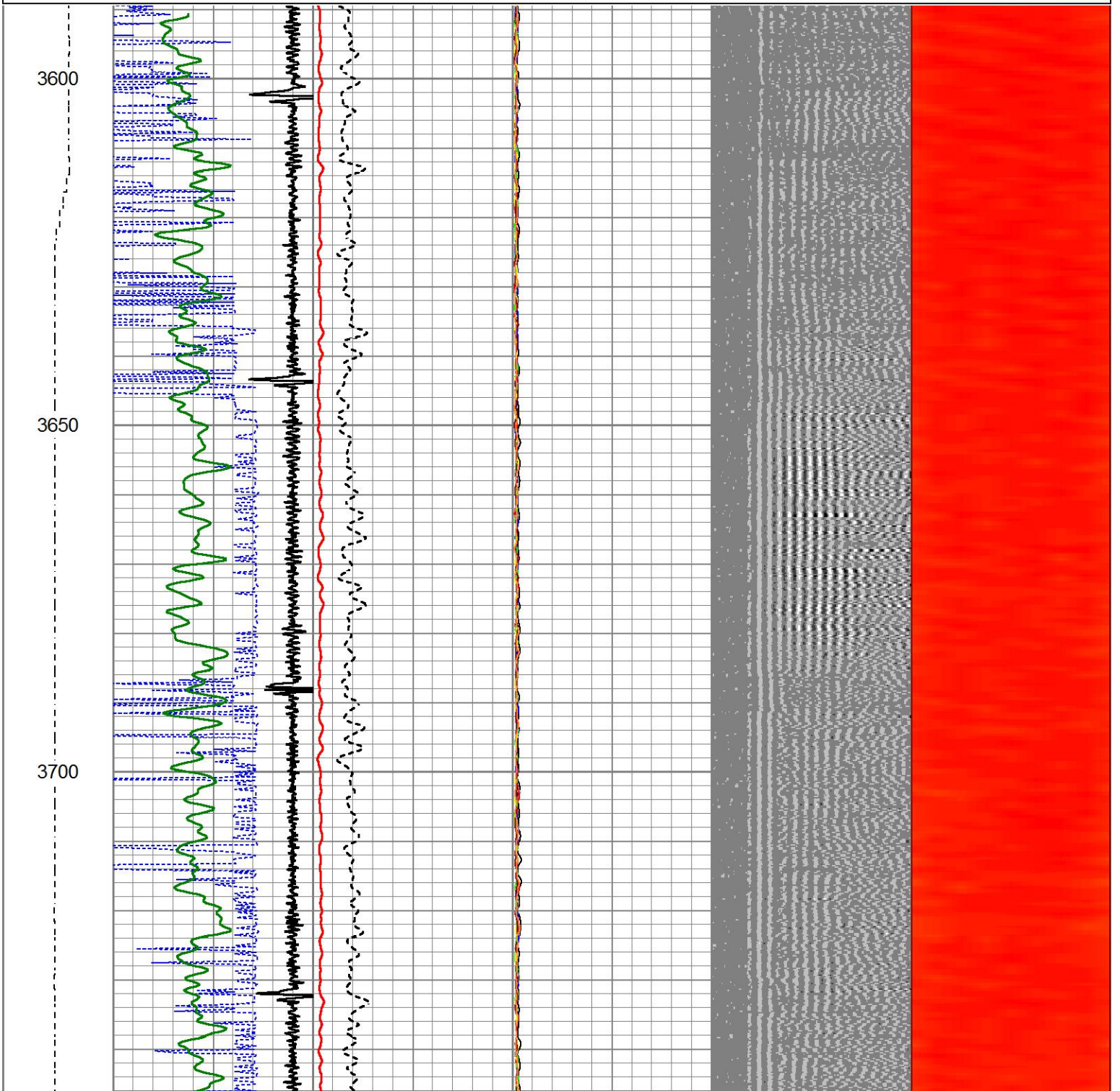
Quantity	Offset (ft)	Substrate	Description	Length (ft)	O.D. (in)	Weight (lb)
----------	-------------	-----------	-------------	-------------	-----------	-------------

Sensor	Offset (ft)	Schematic	Description	Length (ft)	O.D. (in)	Weight (lb)	
			CHD-1_11/16_Cablehead 1 11/16 Cablehead	1.00	1.68	5.00	
			CENT-1.69variable 1.69" Centrilizer Variable Length	2.88	1.69	15.00	
Temp	13.93			RBT-27SBT10 (Greeley Ext Temp) Probe 2.75" Radial with Integral Temperature Sub	9.39	2.75	
WVFS8	11.69						
WVFS7	11.69						
WVFS6	11.69						
WVFS5	11.69						
WVFS4	11.69						
WVFS3	11.69						
WVFS2	11.69						
WVFS1	11.69						
WVF3FT	11.69						
WVF5FT	10.69						
HEADVOLT	7.44						
WVFCAL	7.44						
			CENT-1.69variable 1.69" Centrilizer Variable Length	2.88	1.69	15.00	
CCL	3.63						
			GR-27GRL10 (27GRL10-XXXX) 2-3/4" Probe Gamma Ray	4.56	2.75	50.00	
GR	0.89						

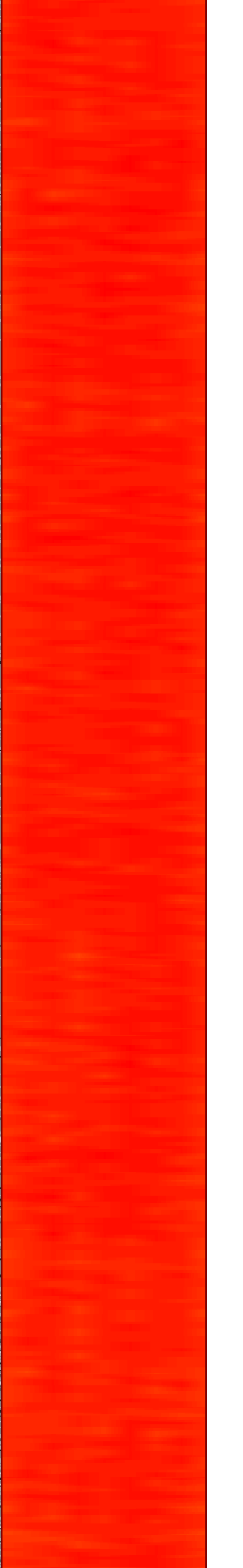
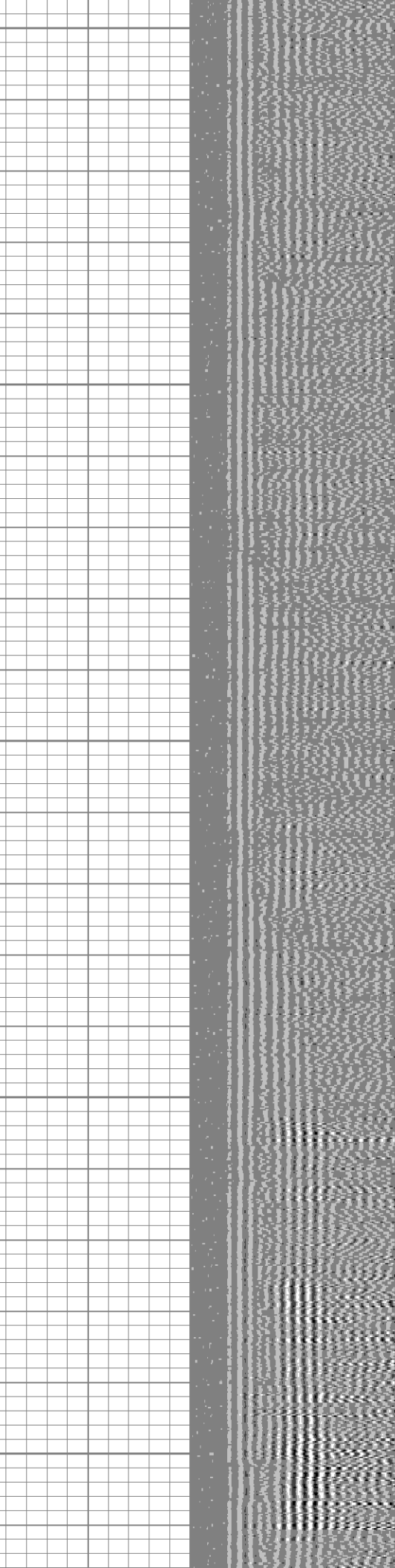
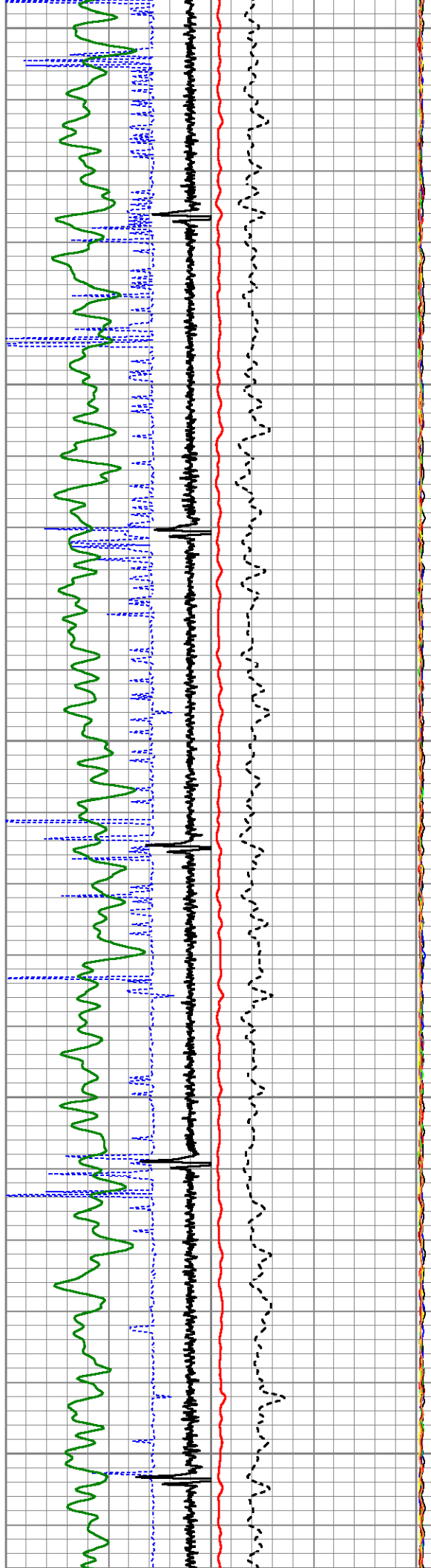
Dataset: flanigan01b-06h.db: field/well/run1/pass8
 Total length: 20.71 ft
 Total weight: 85.00 lb
 O.D.: 2.75 in

Database File flanigan01b-06h.db
 Dataset Pathname pass8
 Presentation Format ips_rbcolorcivitas
 Dataset Creation Fri Nov 15 08:47:15 2024
 Charted by Depth in Feet scaled 1:240

LSPD	650	TT (usec)	150	0	AMP (mV)	100	0	AMPS1	150	200	VDL (usec)	1200	1	Cement Map	8
(ft/min)	-9	CCL	1		AMPLIFIED		0	AMPS2	150						
0	250	0	GR (GAPI)	200	0	(mV)	20	0	AMPS3	150					
		200	GR (GAPI)	400				0	AMPS4	150					
								0	AMPS5	150					
								0	AMPS6	150					
								0	AMPS7	150					
								0	AMPS8	150					



3750
3800
3850
3900
3950

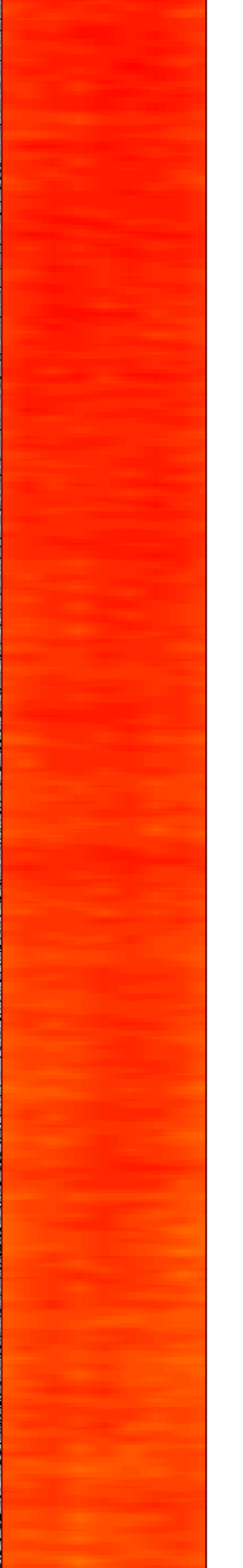
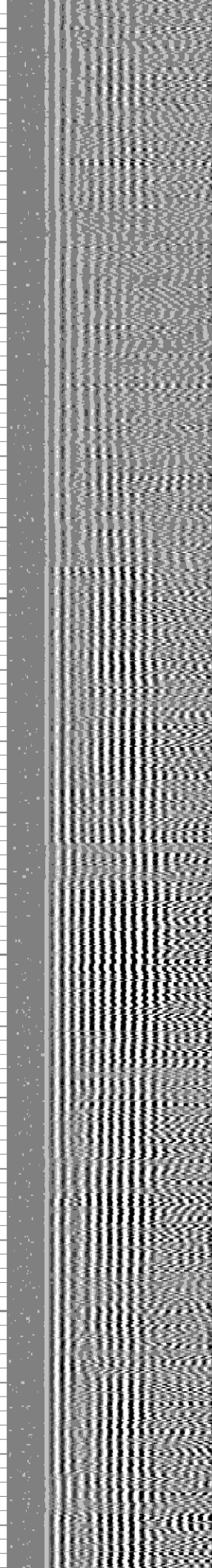
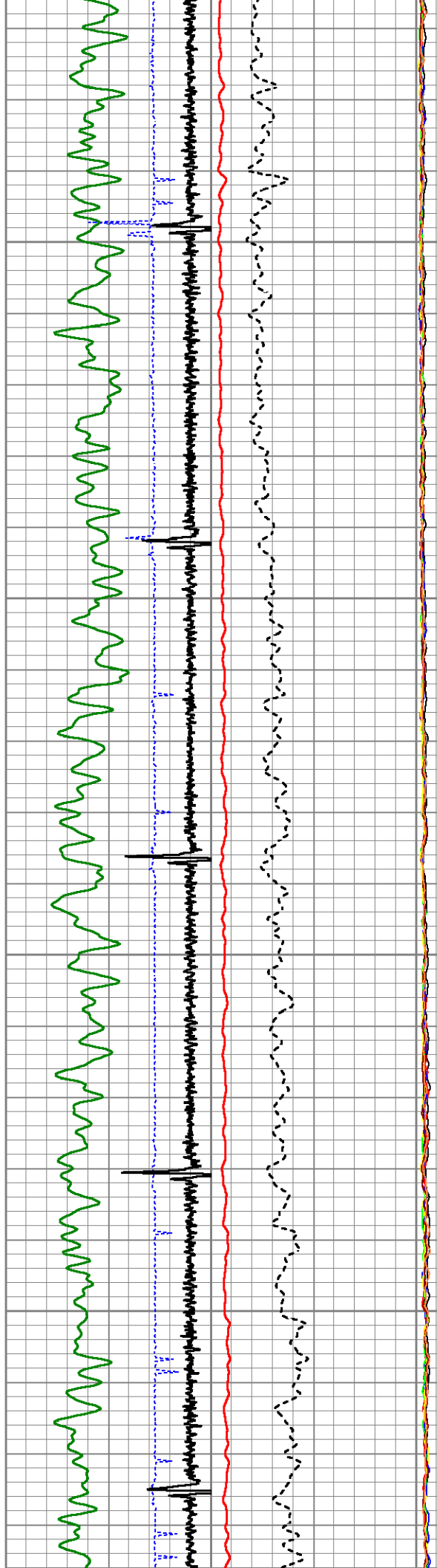


4000

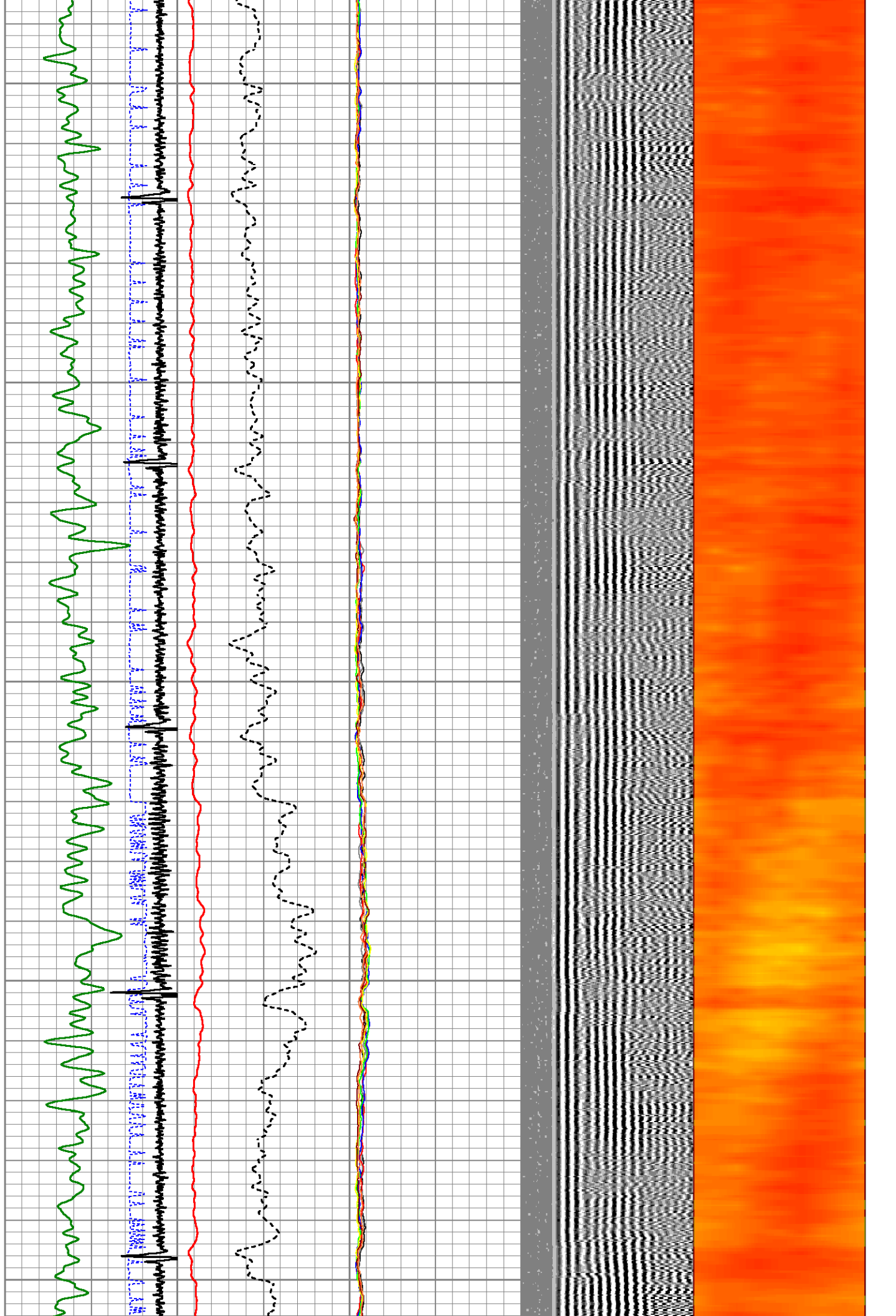
4050

4100

4150



4200
4250
4300
4350
4400

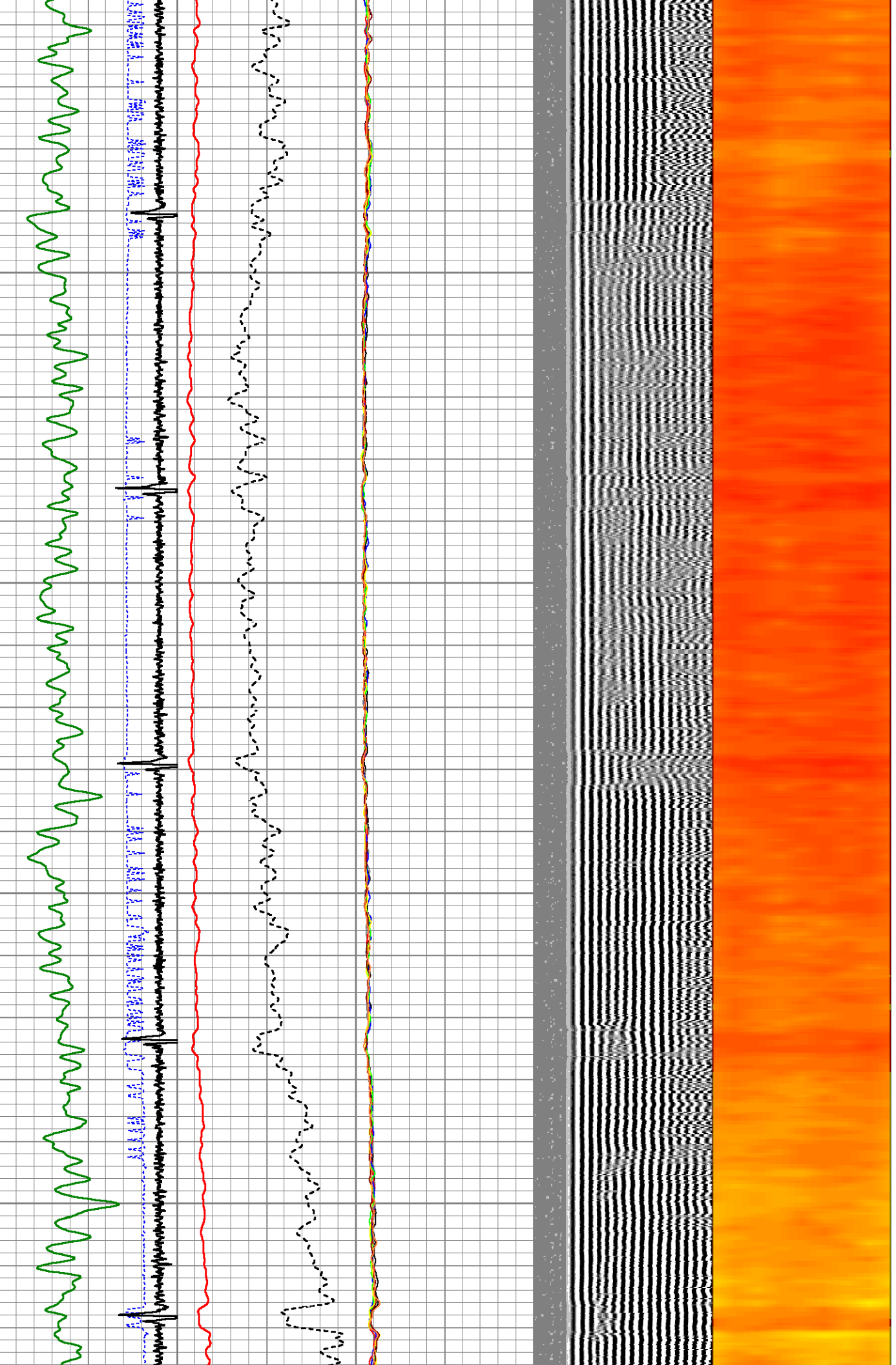


4450

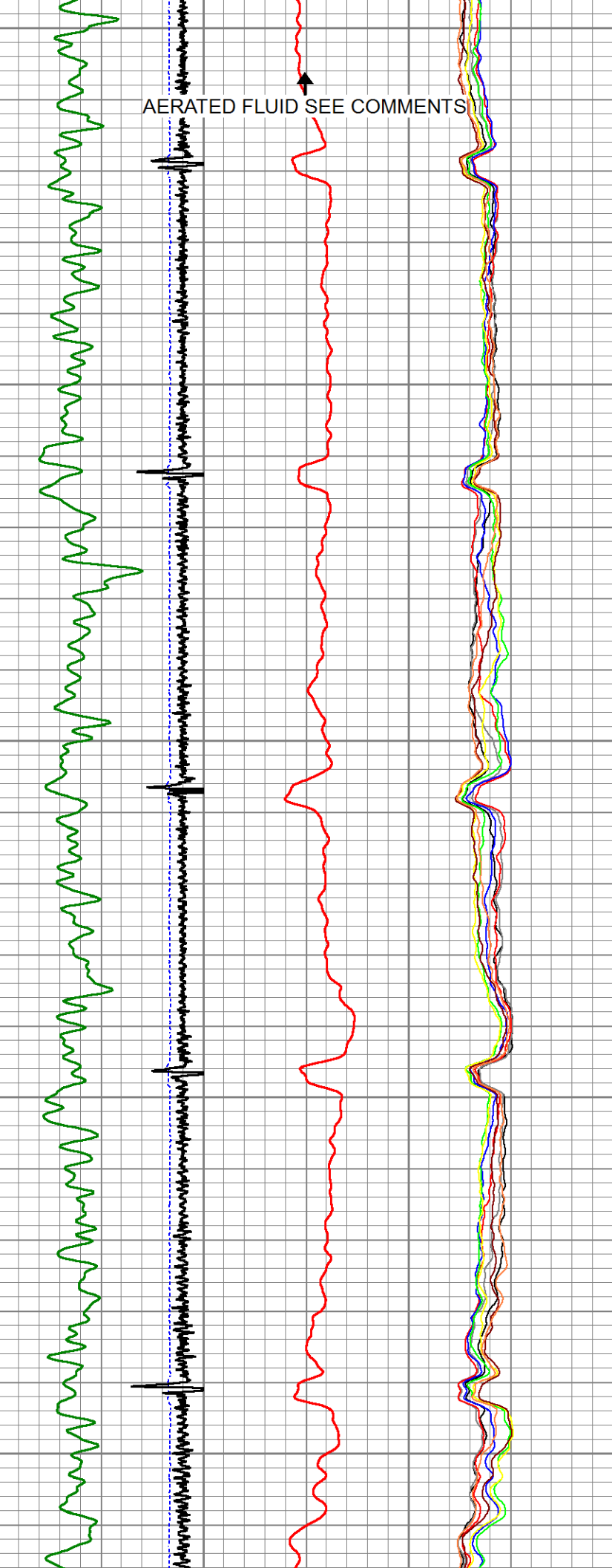
4500

4550

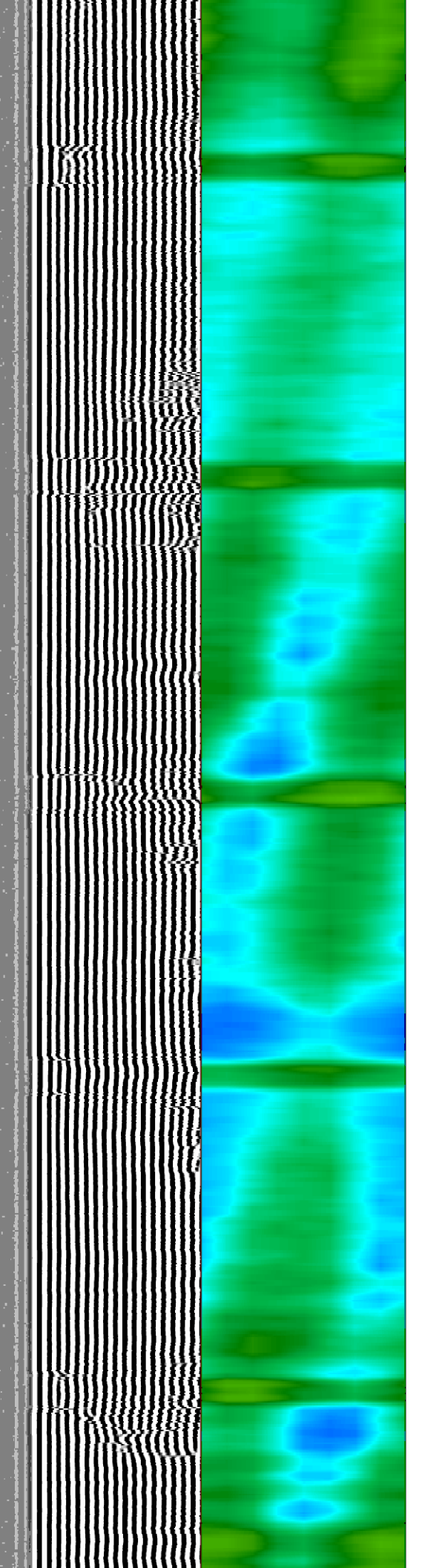
4600



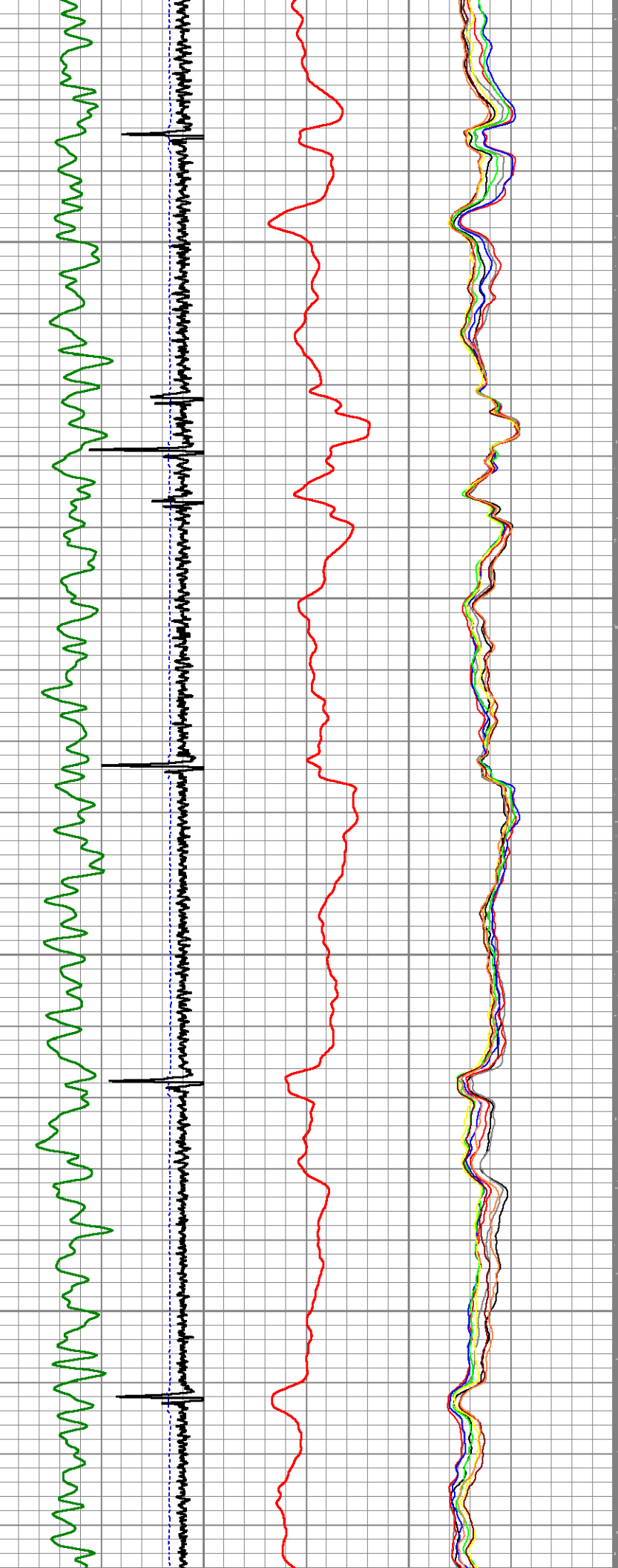
4850
4900
4950
5000
5050



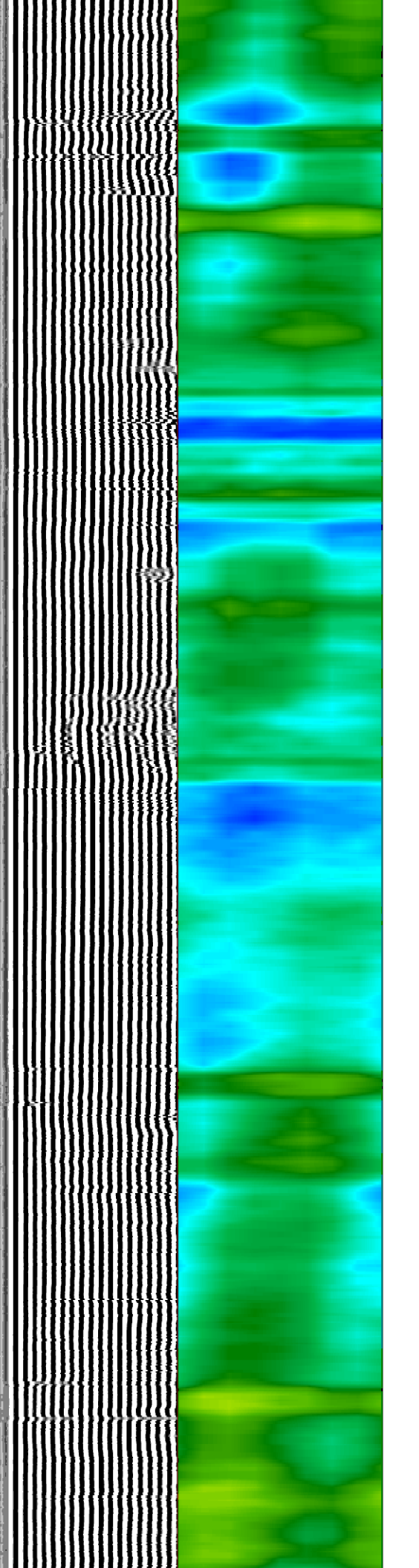
AERATED FLUID SEE COMMENTS



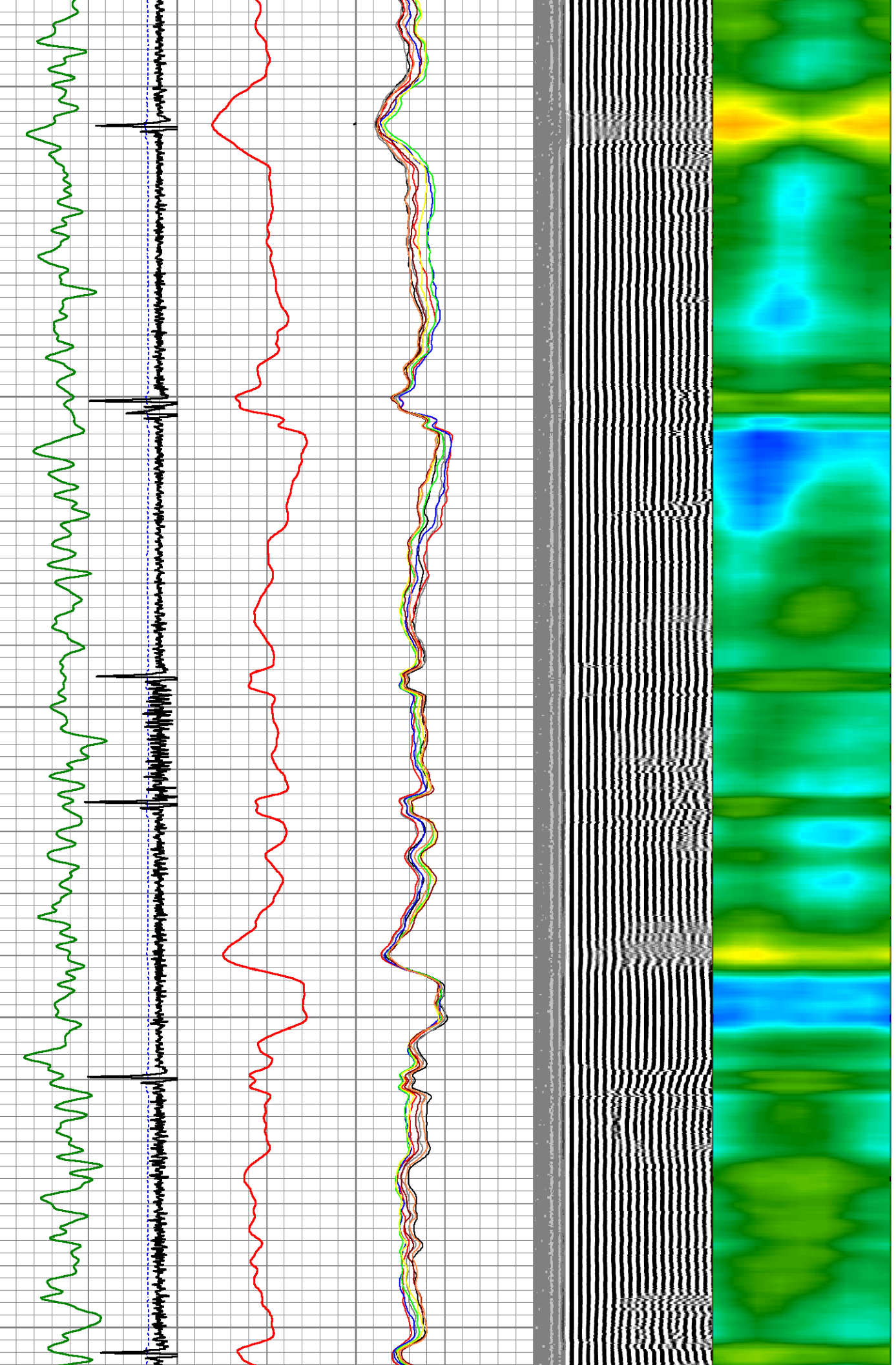
5100
5150
5200
5250



Vertical text labels and a scale bar on the right side of the plot.



5300
5350
5400
5450
5500

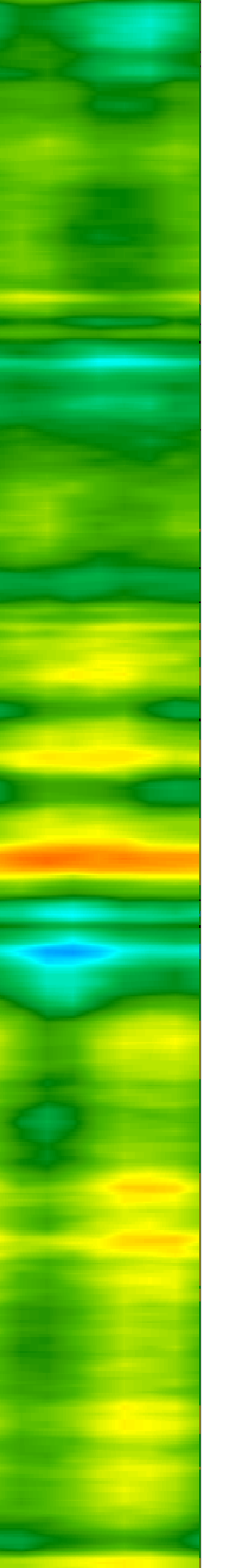
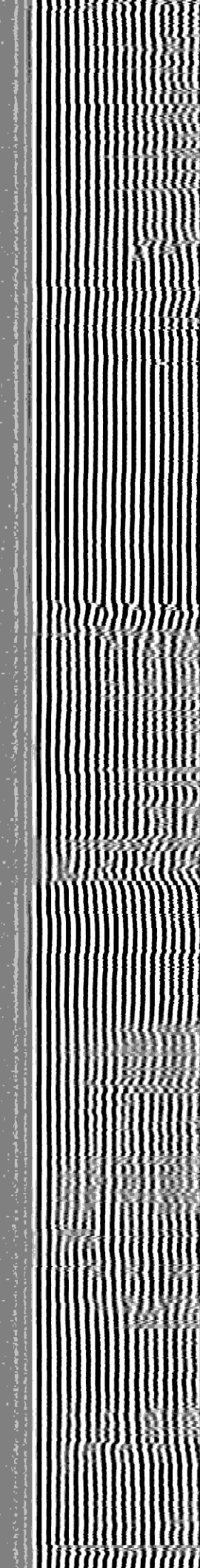
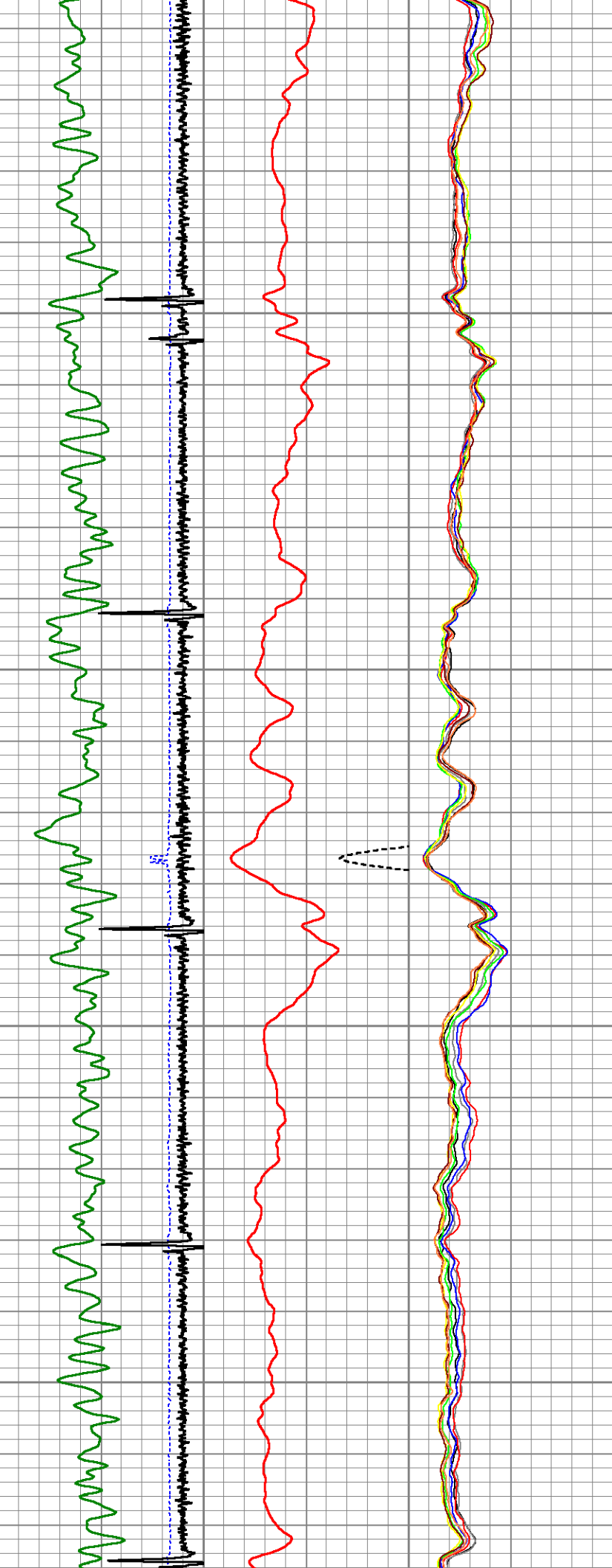


5550

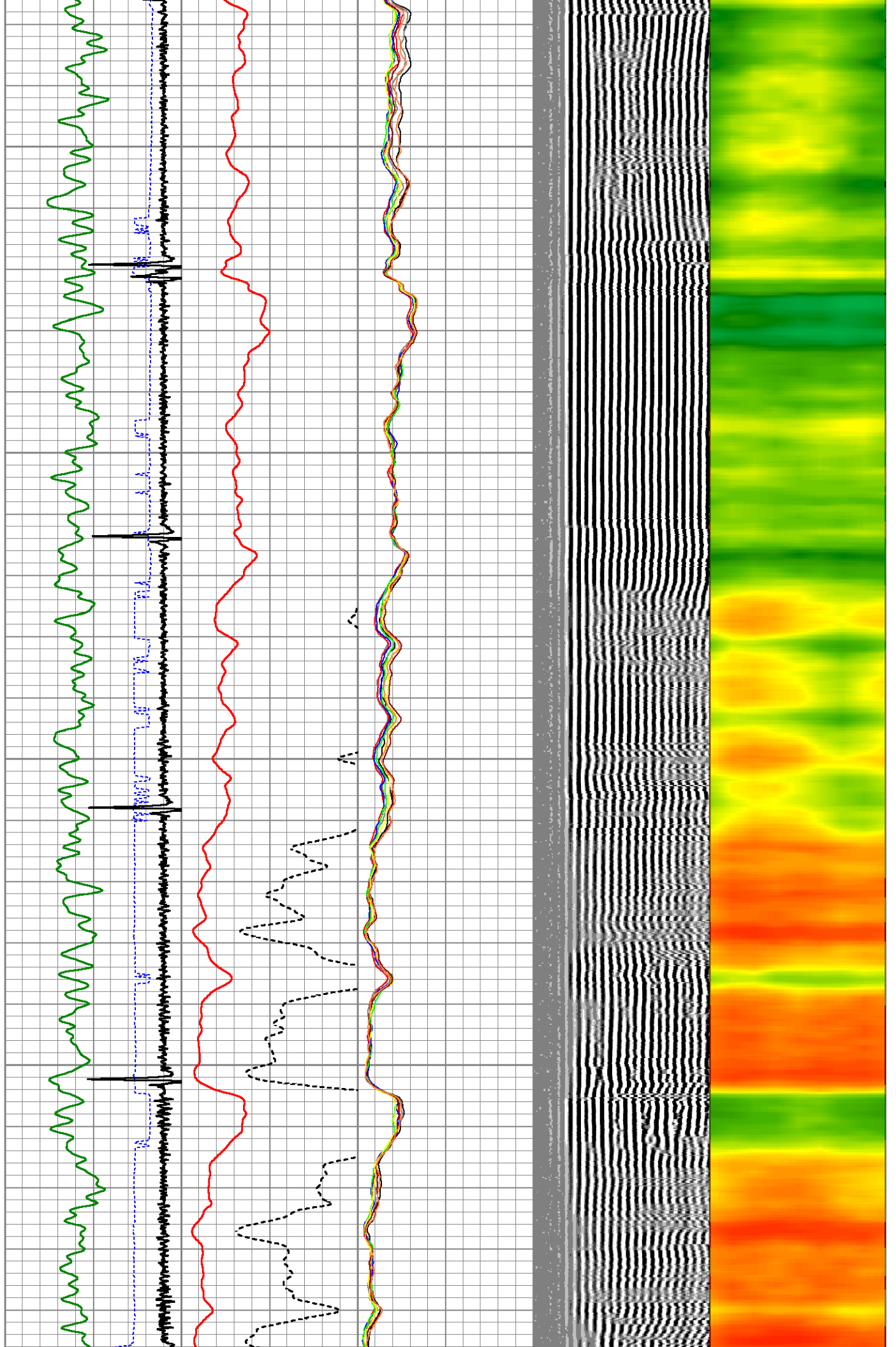
5600

5650

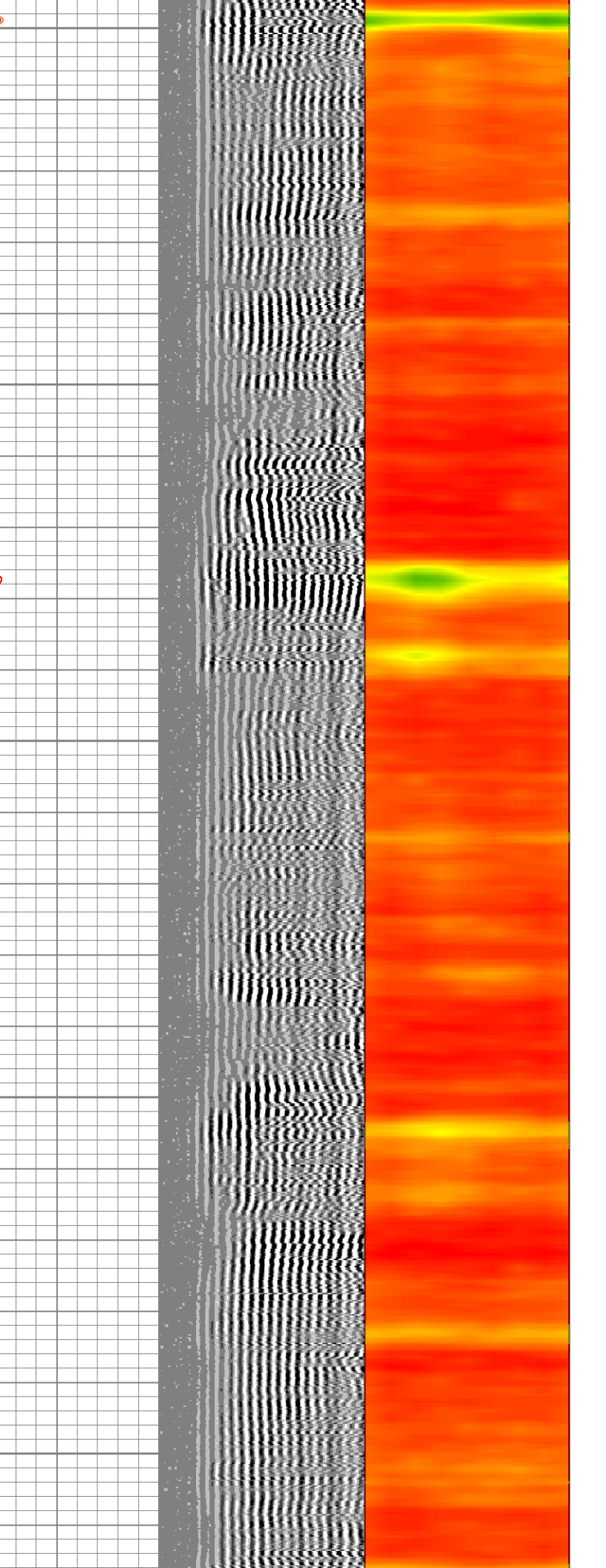
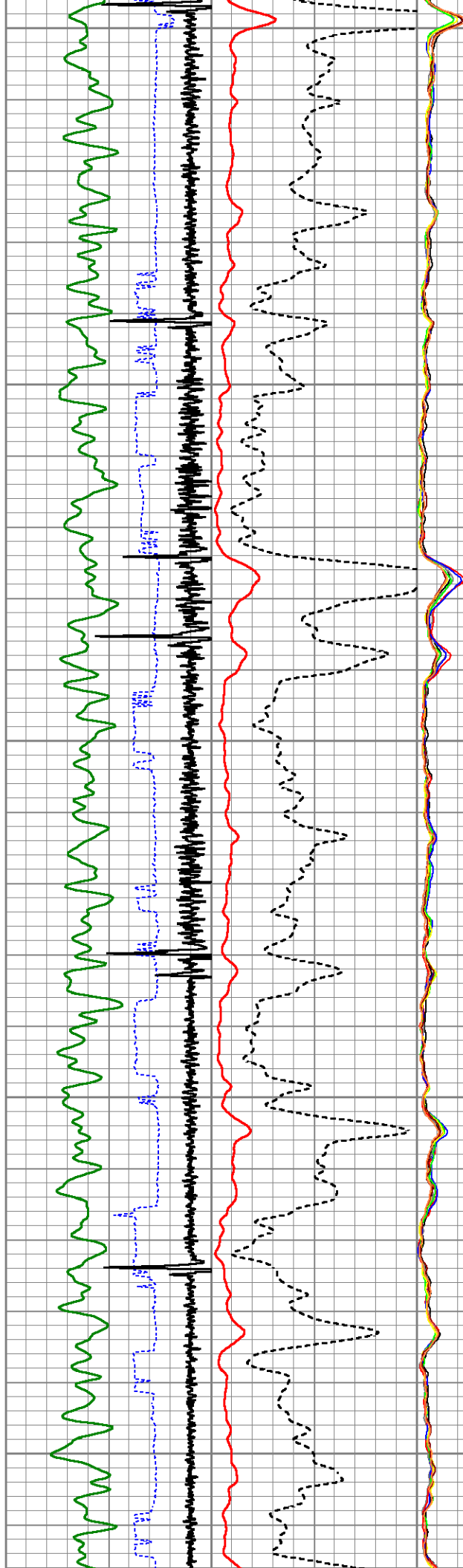
5700



5750
5800
5850
5900



5950
6000
6050
6100
6150

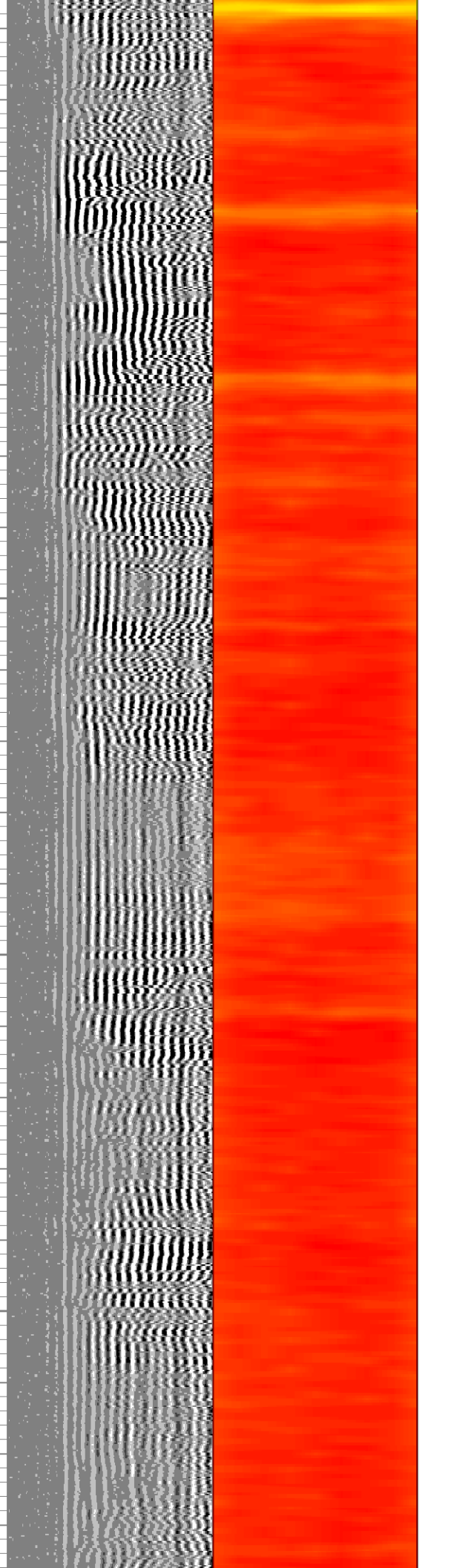
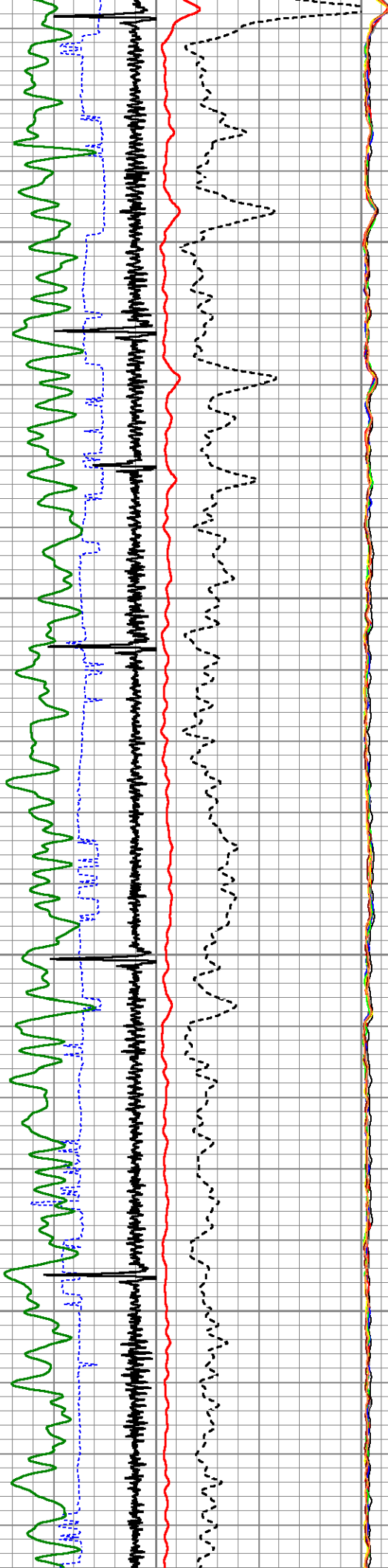


6200

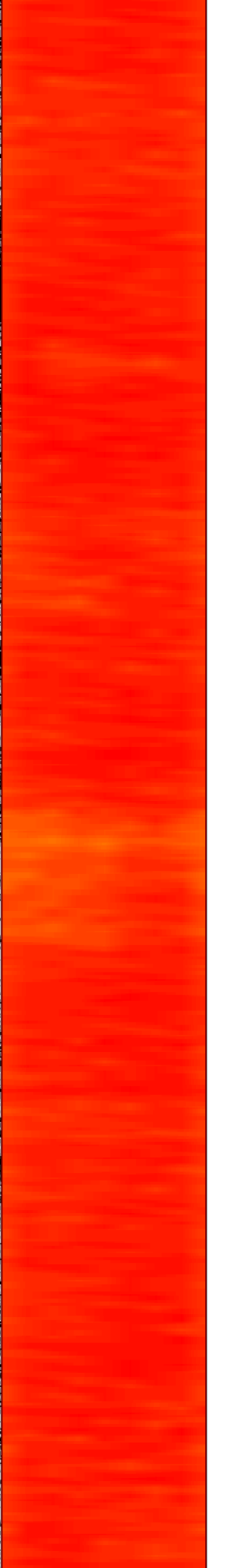
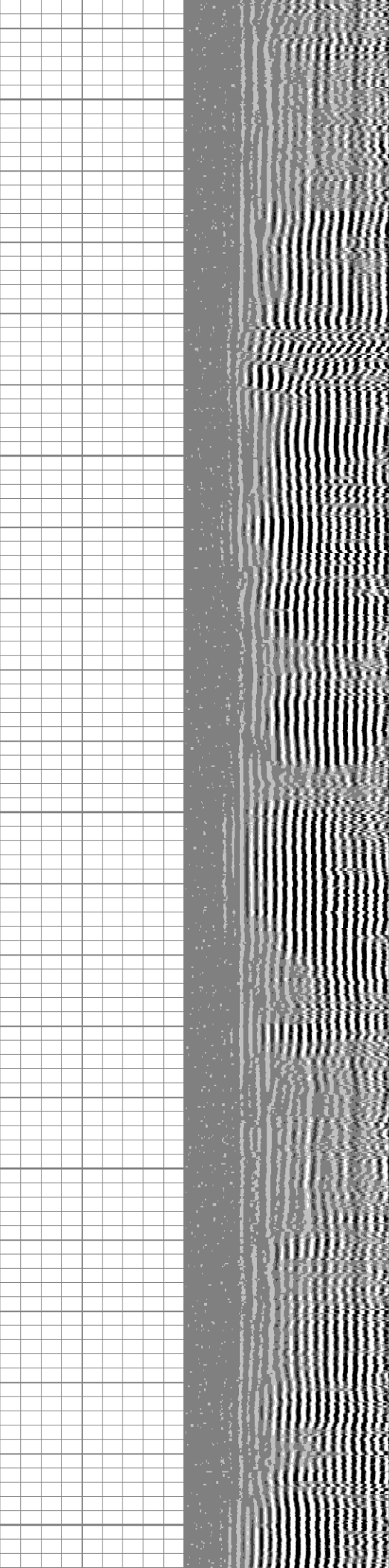
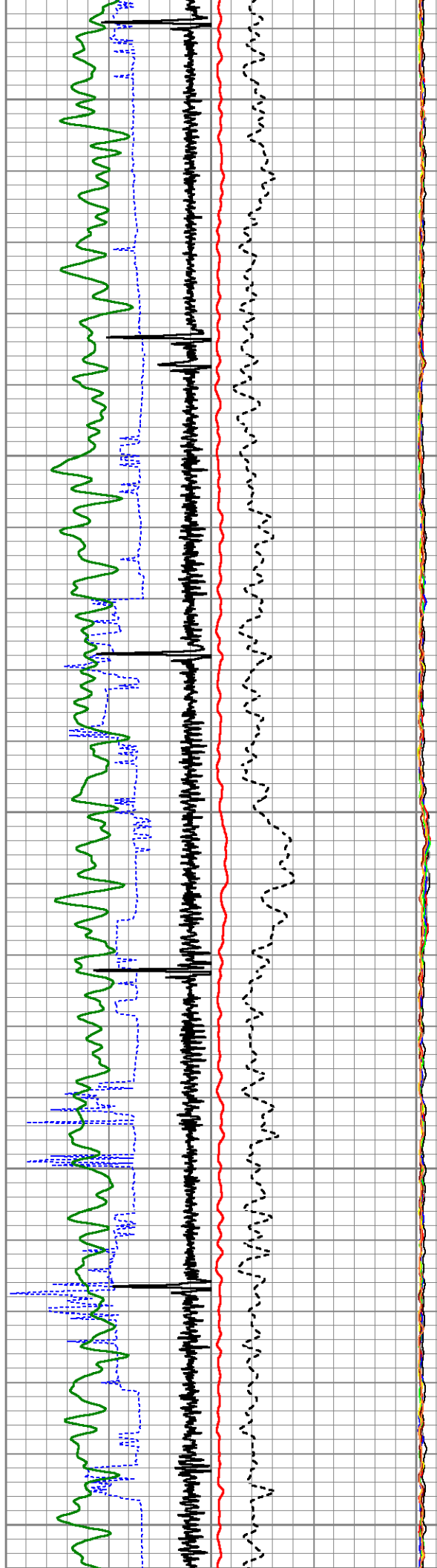
6250

6300

6350



6400
6450
6500
6550
6600

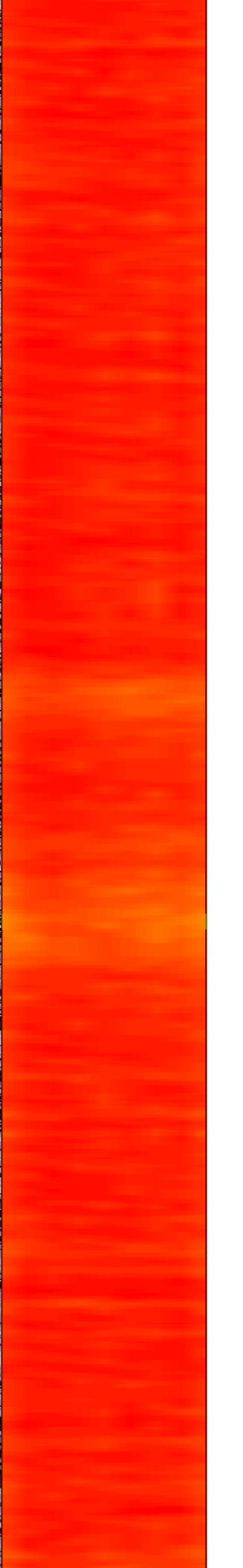
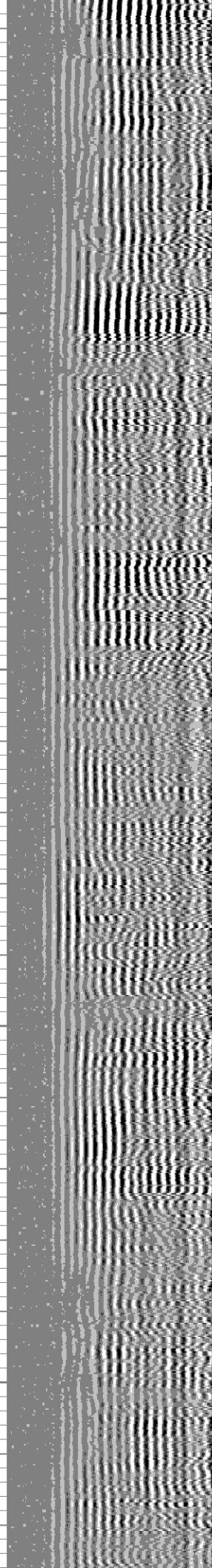
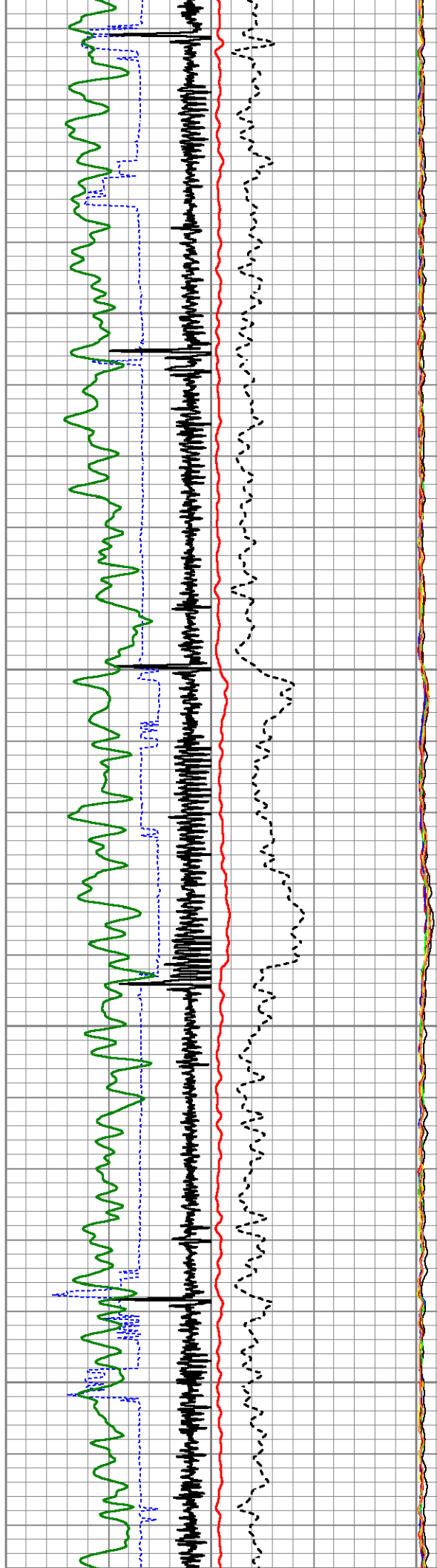


6650

6700

6750

6800

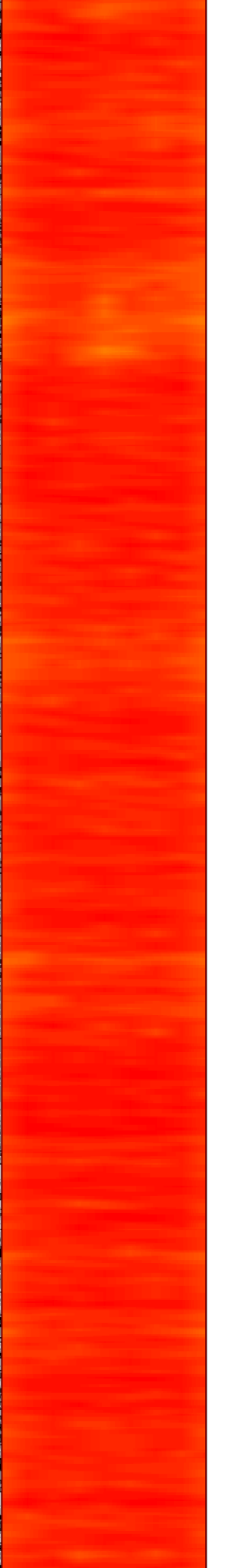
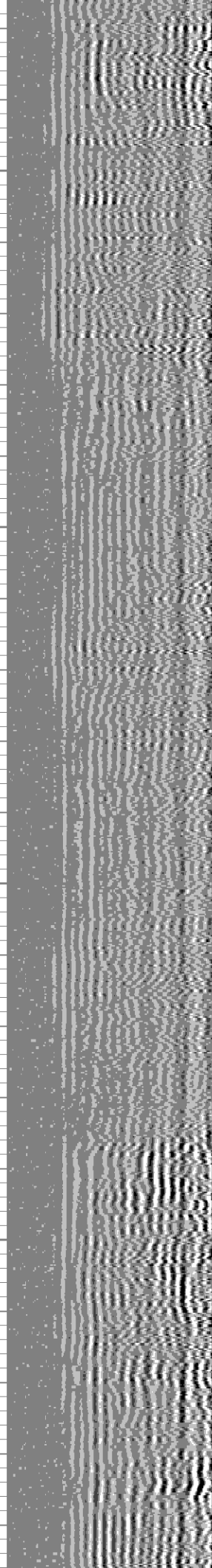
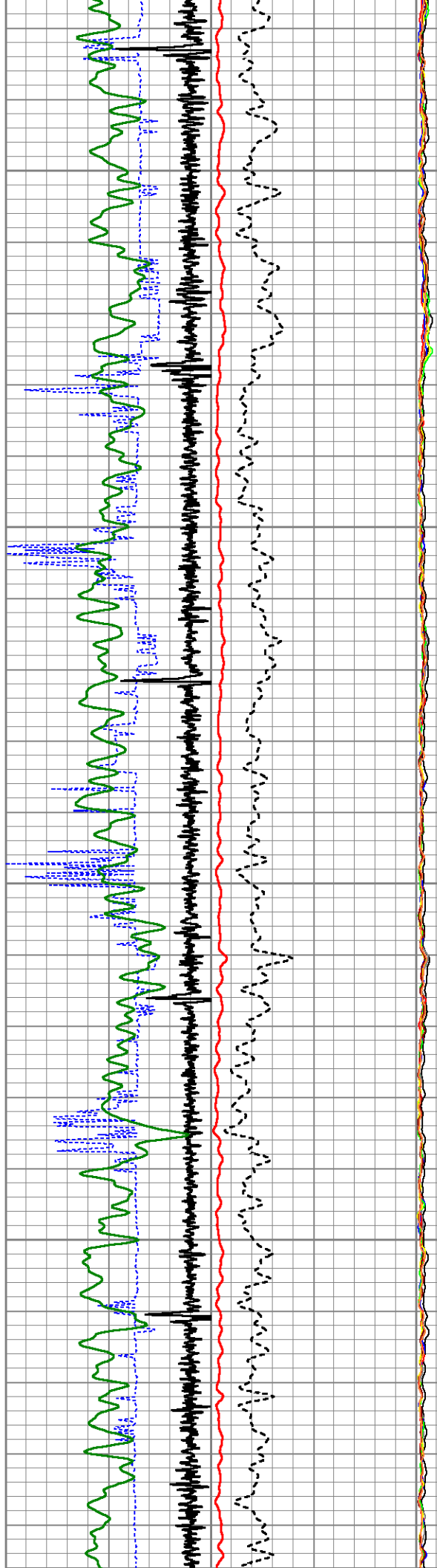


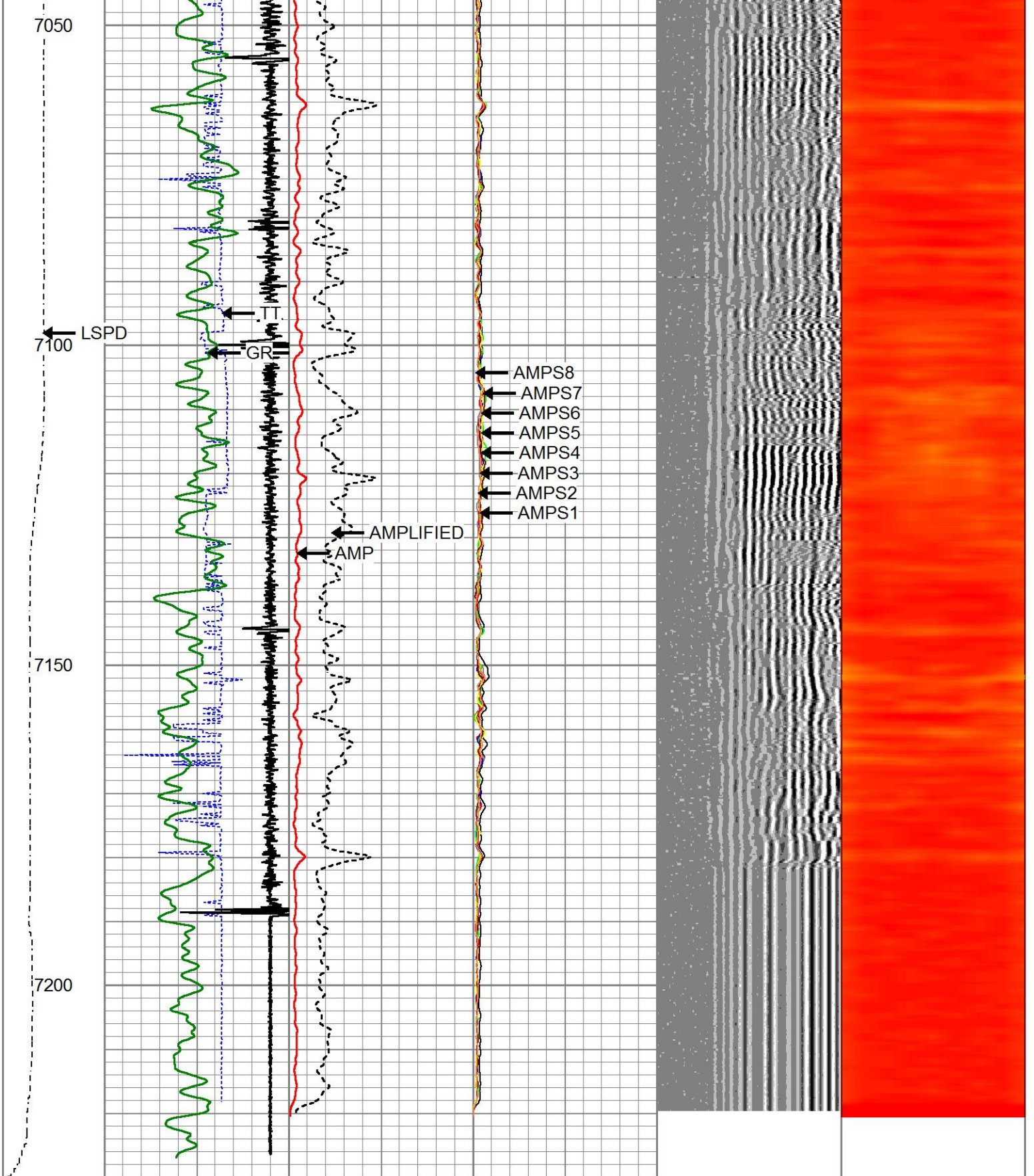
6850

6900

6950

7000





LSPD	650	TT (usec)	150	0	AMP (mV)	100	0	AMPS1	150	200	VDL (usec)	1200	1	Cement Map	8
(ft/min)	-9	CCL	1		AMPLIFIED		0	AMPS2	150						
0	250	0	GR (GAPI)	200	0	(mV)	20	0	AMPS3	150					
		200	GR (GAPI)	400				0	AMPS4	150					
								0	AMPS5	150					
								0	AMPS6	150					
								0	AMPS7	150					
								0	AMPS8	150					

Calibration Report

Database File flanigan01b-06h.db
 Dataset Pathname pass8
 Dataset Creation Fri Nov 15 08:47:15 2024

Gamma Ray Calibration Report

Serial Number: 27GRL10-XXXX
 Tool Model: 27GRL10
 Performed: (Not Performed)

Calibrator Value: 1.0 GAPI

Background Reading: 0.0 cps
 Calibrator Reading: 1.0 cps

Sensitivity: 1.0000 GAPI/cps

Segmented Cement Bond Log Calibration Report

Serial Number: Greeley Ext Temp
 Tool Model: 27SBT10

Calibration Casing Diameter: 4.500 in
 Calibration Depth: -2261.959 ft

Master Calibration, performed (Derived):

	Raw (v)		Calibrated (mv)		Results	
	Zero	Cal	Zero	Cal	Gain	Offset
3'	0.000	1.250	0.800	81.196	64.308	0.800
CAL	0.000	1.915				
5'	0.000	0.978	0.800	81.196	82.182	0.800
SUM						
S1	0.000	1.203	0.000	81.196	67.477	-0.000
S2	0.000	1.232	0.000	81.196	65.923	-0.000
S3	0.000	1.280	0.000	81.196	63.440	-0.000
S4	0.000	1.315	0.000	81.196	61.729	-0.000
S5	0.000	1.339	0.000	81.196	60.620	-0.000
S6	0.000	1.377	0.000	81.196	58.945	-0.000
S7	0.000	1.286	0.000	81.196	63.128	-0.000
S8	0.000	1.181	0.000	81.196	68.730	-0.000

Internal Reference Calibration, performed (Not Performed):

	Raw (v)		Calibrated (v)		Results	
	Zero	Cal	Zero	Cal	Gain	Offset
CAL	0.000	0.000	0.000	1.915	1.000	0.000

Air Zero Calibration, performed Mon Aug 05 11:02:31 2024:

	Raw (v)		Calibrated (v)		Results	
	Zero		Zero			Offset
3'	0.000		0.000			0.000
5'	0.000		0.000			0.000
SUM						

S1	0.000	0.000	0.000
S2	0.000	0.000	0.000
S3	0.000	0.000	0.000
S4	0.000	0.000	0.000
S5	0.000	0.000	0.000
S6	0.000	0.000	0.000
S7	0.000	0.000	0.000
S8	0.000	0.000	0.000



Company	CIVITAS
Well	FLANIGAN 1B-6H
Field	Wattenberg
County	Weld
State	Colorado