

AKIS

ENERGY SERVICES

RADIAL BOND LOG WITH GAMMA RAY

Comp. CIVITAS
Well FLANIGAN 01B-06H
Field Wattenberg
Co. Weld
State Colorado

Company **CIVITAS**
Well **FLANIGAN 01B-06H**
Field **Wattenberg**
County **Weld** State **Colorado**

Location: API #: 05-123-35695 Other Services
SEC 6 TWP 1N RGE 64W
Permanent Datum GL Elevation 4997
Log Measured From KB 13 Above Perm. Datum
Drilling Measured From KB
NW/NE
K.B. 5010
D.F. 5009
G.L. 4997

Date of Service	11/19/2024				
Run Number	ONE				
Depth Driller or PBTD	1445				
Depth Logger	5172				
Bottom Log Interval	5177				
Top Log Interval	SURFACE				
Open Hole Size	7.875				
Type Fluid	WATER				
Fluid Level	Full				
Fluid Density	N/A				
Max. Recorded Temperature	N/A				
Max. Wellhead Pressure	0				
Wellhead Connection	N/A				
Estimated Cement Top	SEE LOG				
Unit Number	5076				
Wireline Size	9/32				
Location	GREELEY CO				
Recorded By	CODY JENSEN				
Witnessed By	MIKE COLE				
Tubing Record		Size	Wt/Ft	Top	Bottom
Surface Casing					
Production Casing					
Liner Record					

<<< Fold Here >>>

All interpretations are opinions based on inferences from electrical or other measurements and Pioneer Wireline Services, LLC cannot and does not guarantee the accuracy or correctness of any interpretation, and Pioneer Wireline Services, LLC will not be liable or responsible for any loss, costs, damages, or expenses incurred or sustained by anyone resulting from any interpretation made by any of our officers, agents or employees.

Comments

N/A DENOTES NOT AVAILABLE OR NON-APPLICABLE.
LOGGED UNDER 500 PSI

THANK YOU FOR USING PIONEER ENERGY SERVICES!

Your Pioneer Energy Services Crew	Tool Data - Services	Serial Number
Engineer: Operator: Operator: Operator:		

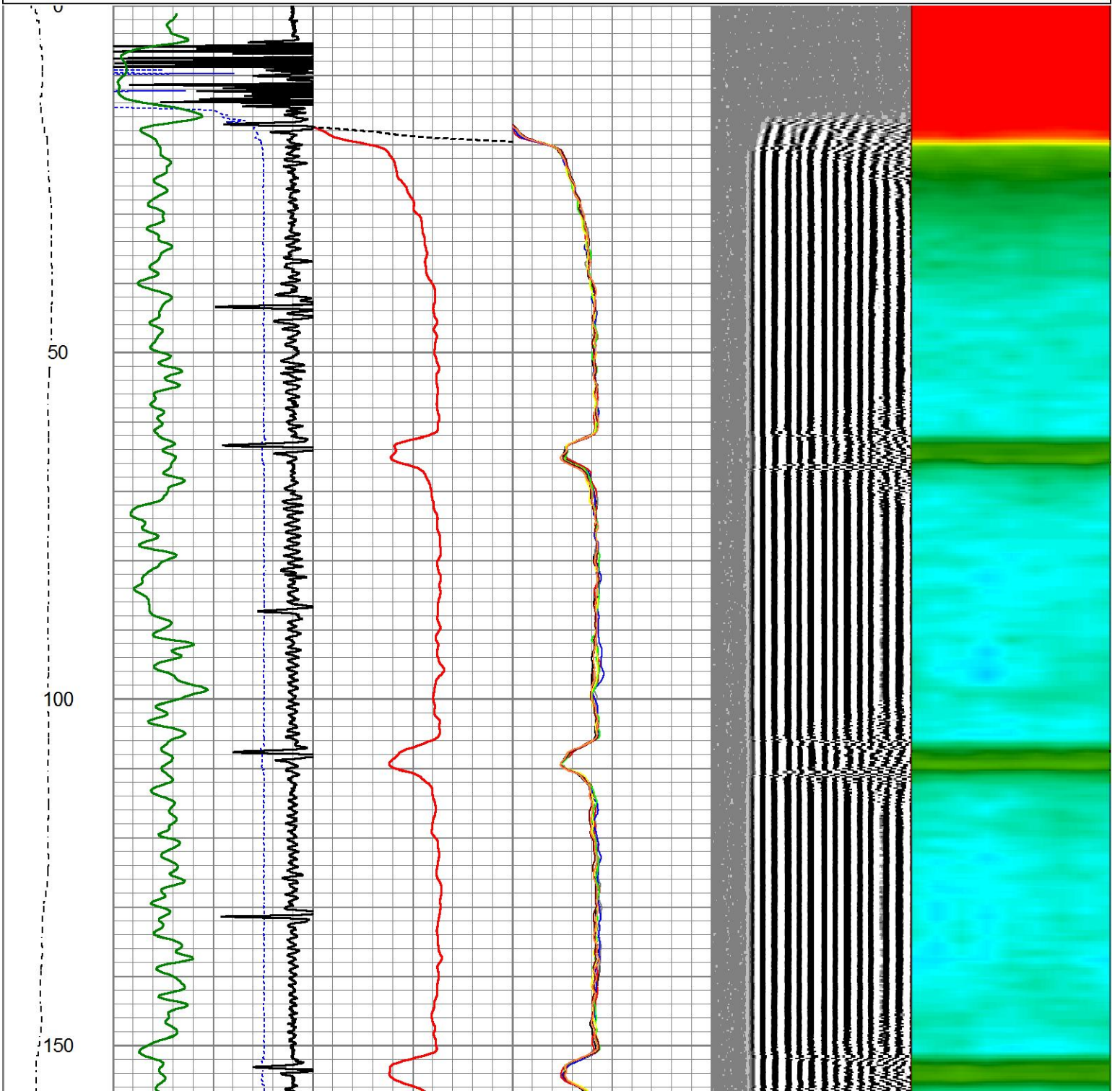
Quantity	Offset (ft)	Substrate	Description	Length (ft)	O.D. (in)	Weight (lb)
----------	-------------	-----------	-------------	-------------	-----------	-------------

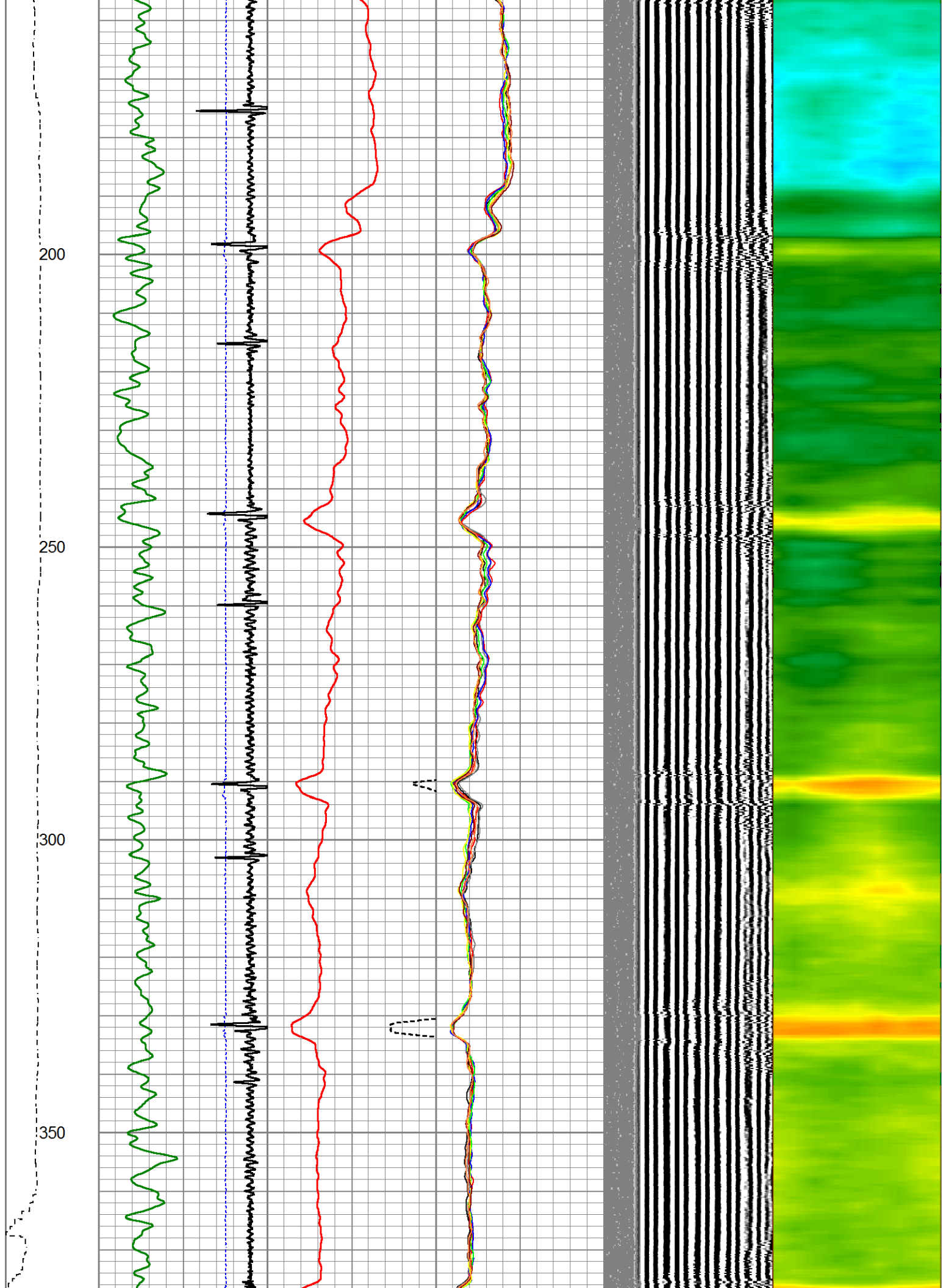
Sensor	Offset (ft)	Schematic	Description	Length (ft)	O.D. (in)	Weight (lb)	
			CHD-1_11/16_Cablehead 1 11/16 Cablehead	1.00	1.68	5.00	
			CENT-1.69variable 1.69" Centrilizer Variable Length	2.88	1.69	15.00	
Temp	13.93						
			RBT-27SBT10 (Greeley Ext Temp) Probe 2.75" Radial with Integral Temperature Sub	9.39	2.75		
WVFS8	11.69						
WVFS7	11.69						
WVFS6	11.69						
WVFS5	11.69						
WVFS4	11.69						
WVFS3	11.69						
WVFS2	11.69						
WVFS1	11.69						
WVF3FT	11.69						
WVF5FT	10.69						
HEADVOLT	7.44						
WVFCAL	7.44						
			CENT-1.69variable 1.69" Centrilizer Variable Length	2.88	1.69	15.00	
CCL	3.63						
			GR-27GRL10 (27GRL10-XXXX) 2-3/4" Probe Gamma Ray	4.56	2.75	50.00	
GR	0.89						

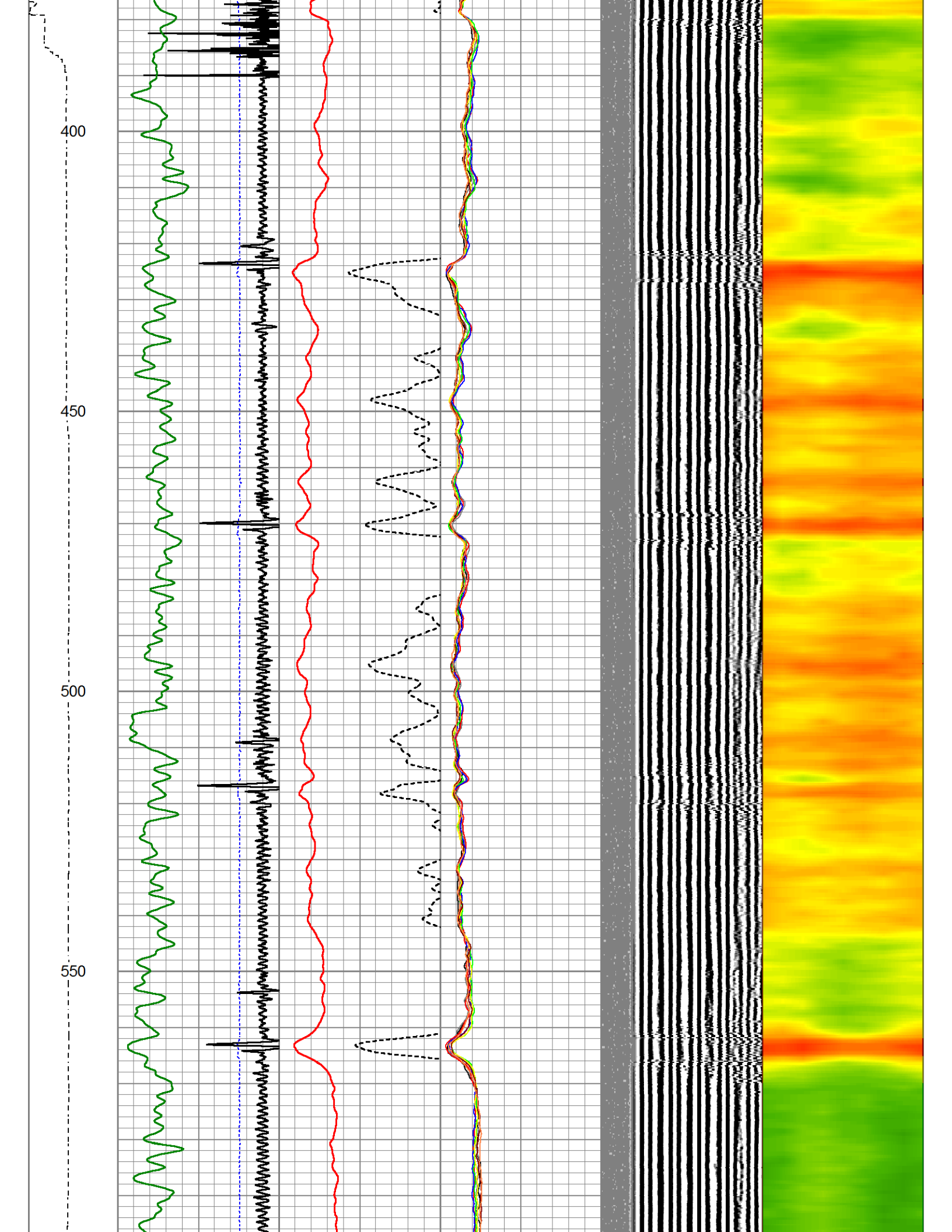
Dataset: flanigan01b-06h.db: field/well/run1/pass40
 Total length: 20.71 ft
 Total weight: 85.00 lb
 O.D.: 2.75 in

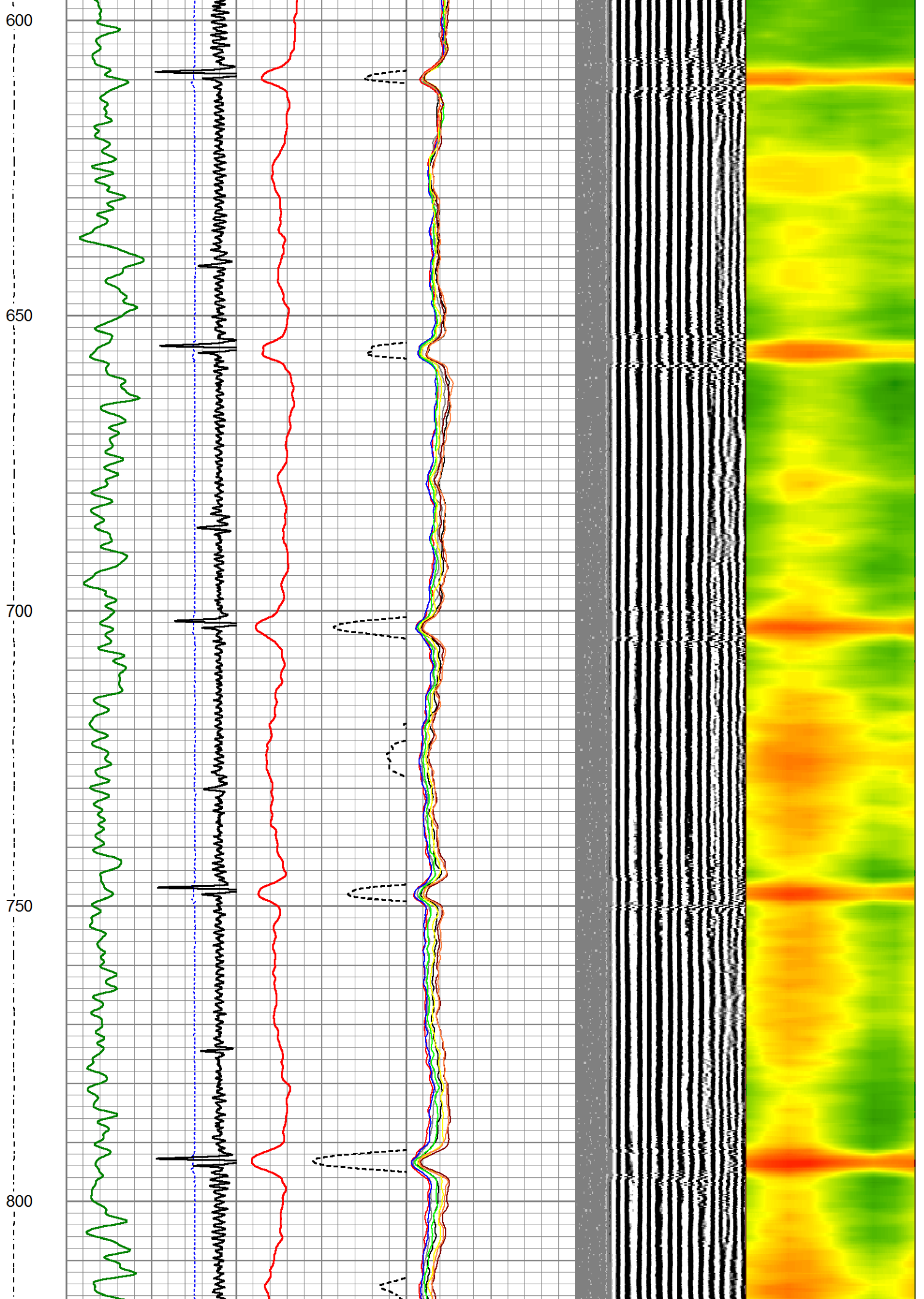
Database File flanigan01b-06h.db
 Dataset Pathname pass40
 Presentation Format ips_rbtcolorcivitas
 Dataset Creation Tue Nov 19 17:14:57 2024
 Charted by Depth in Feet scaled 1:240

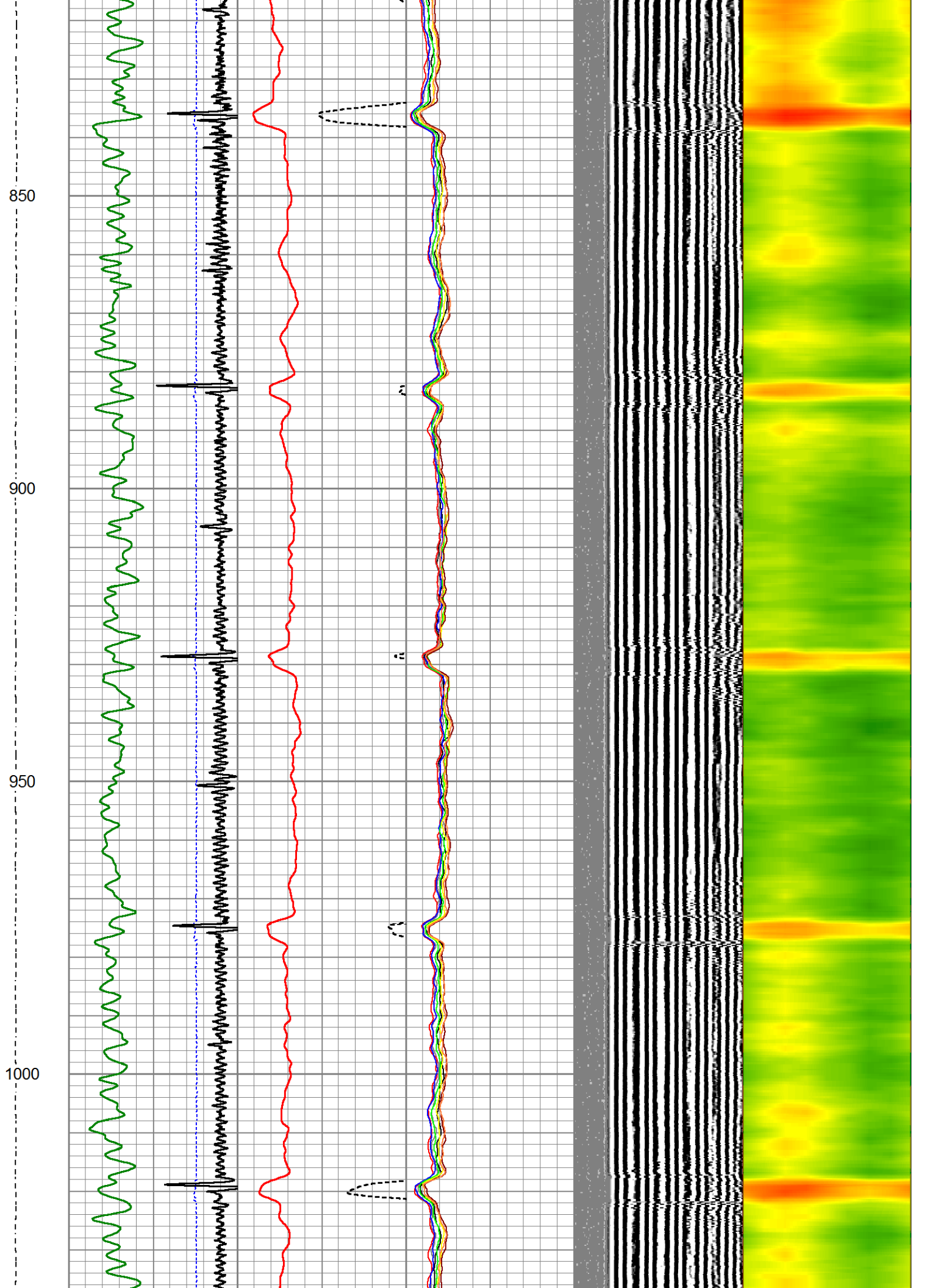
LSPD	650	TT (usec)	150	0	AMP (mV)	100	0	AMPS1	150	200	VDL (usec)	1200	1	Cement Map	8
(ft/min)	-9	CCL	1		AMPLIFIED		0	AMPS2	150						
0	250	0	GR (GAPI)	200	0	(mV)	20	0	AMPS3	150					
		200	GR (GAPI)	400				0	AMPS4	150					
								0	AMPS5	150					
								0	AMPS6	150					
								0	AMPS7	150					
								0	AMPS8	150					

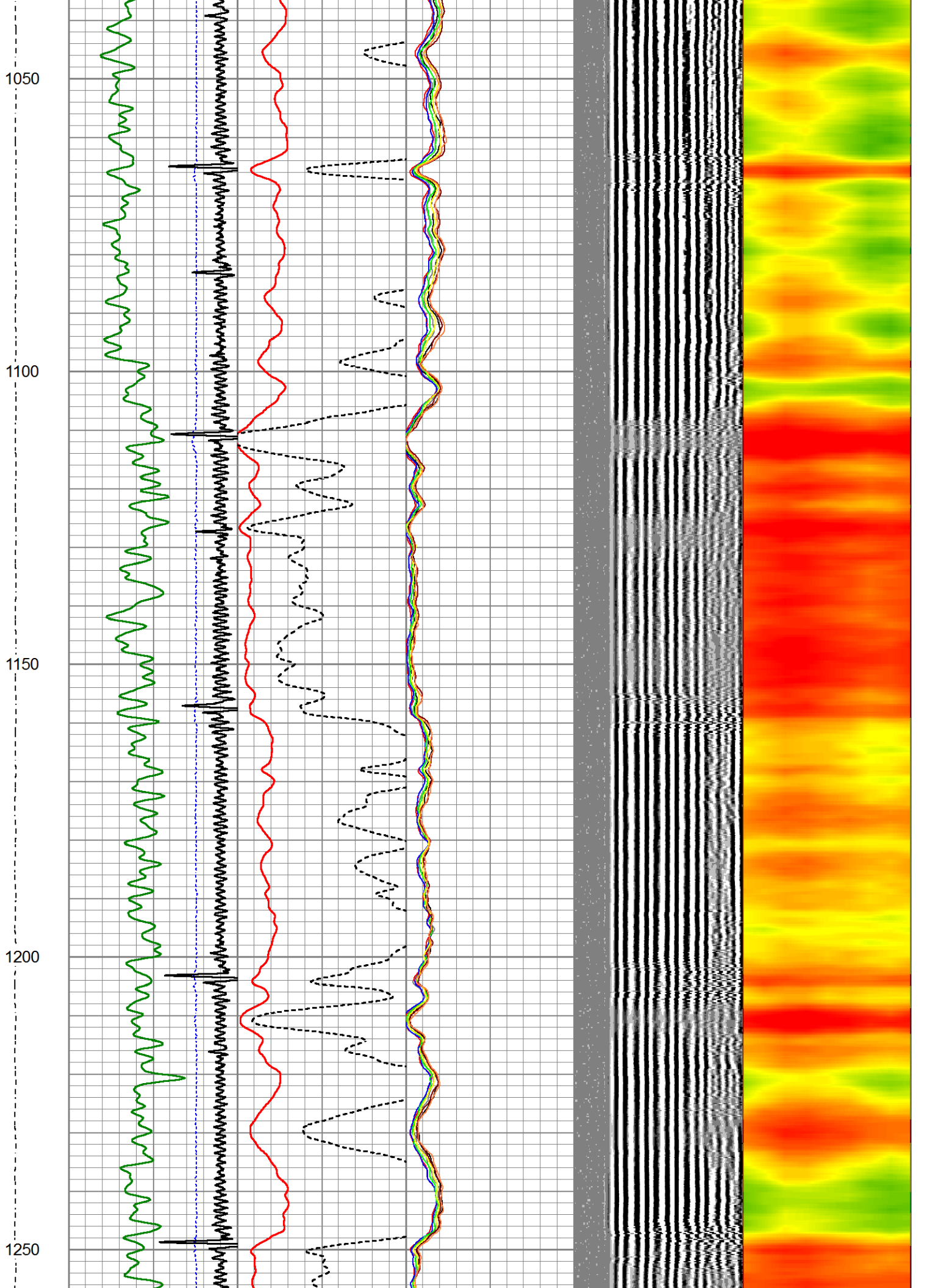


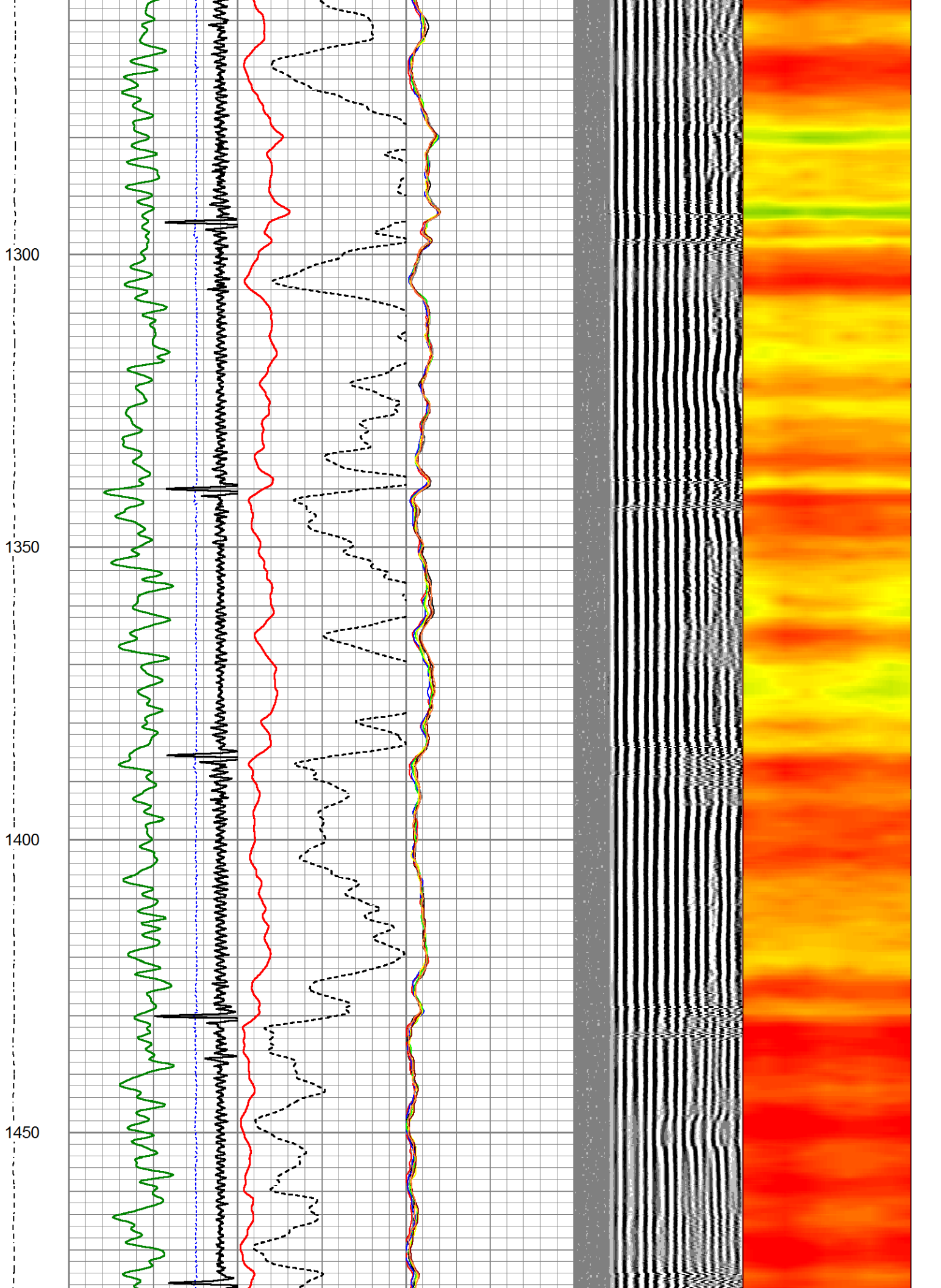










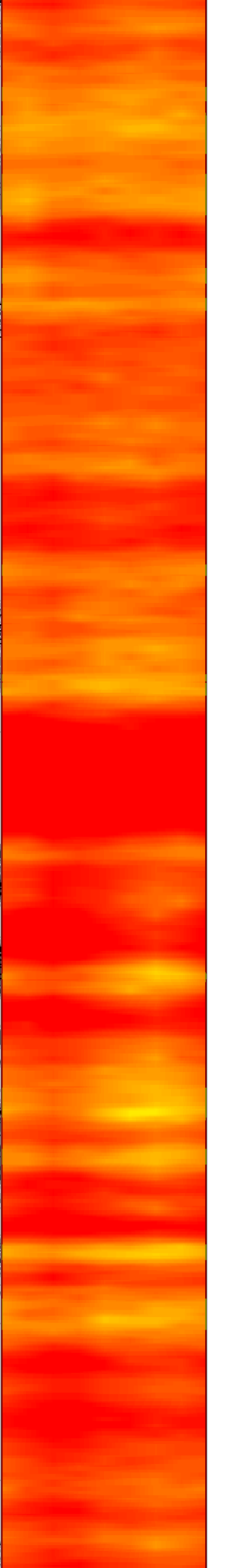
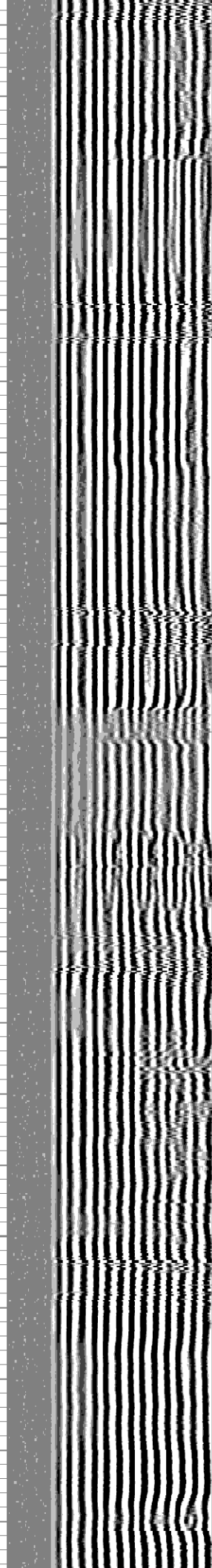
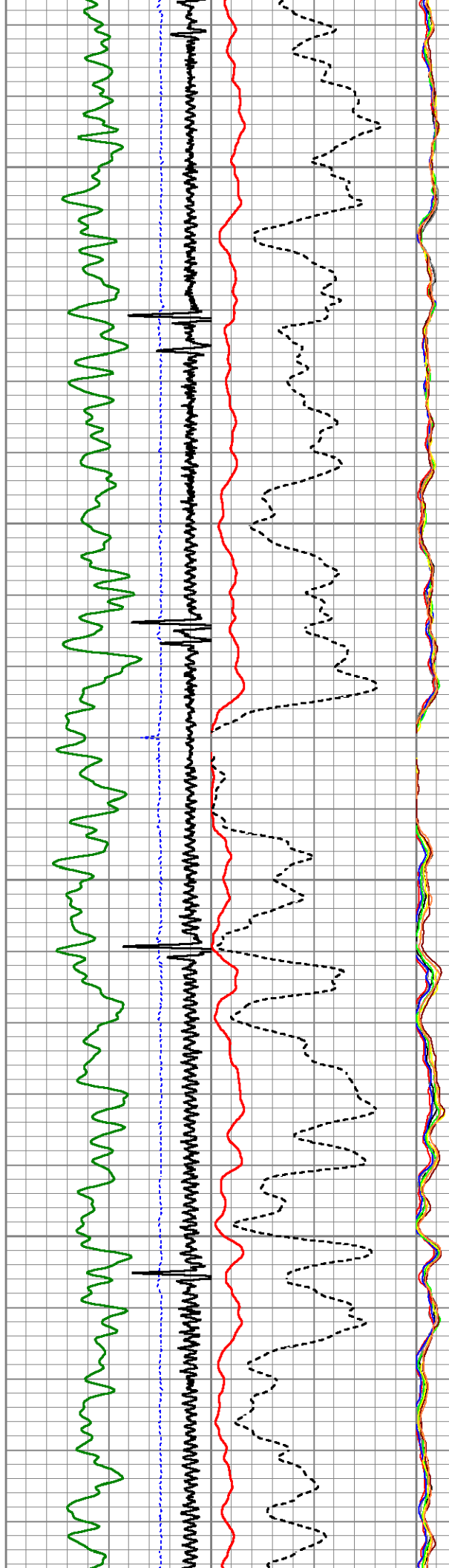


1500

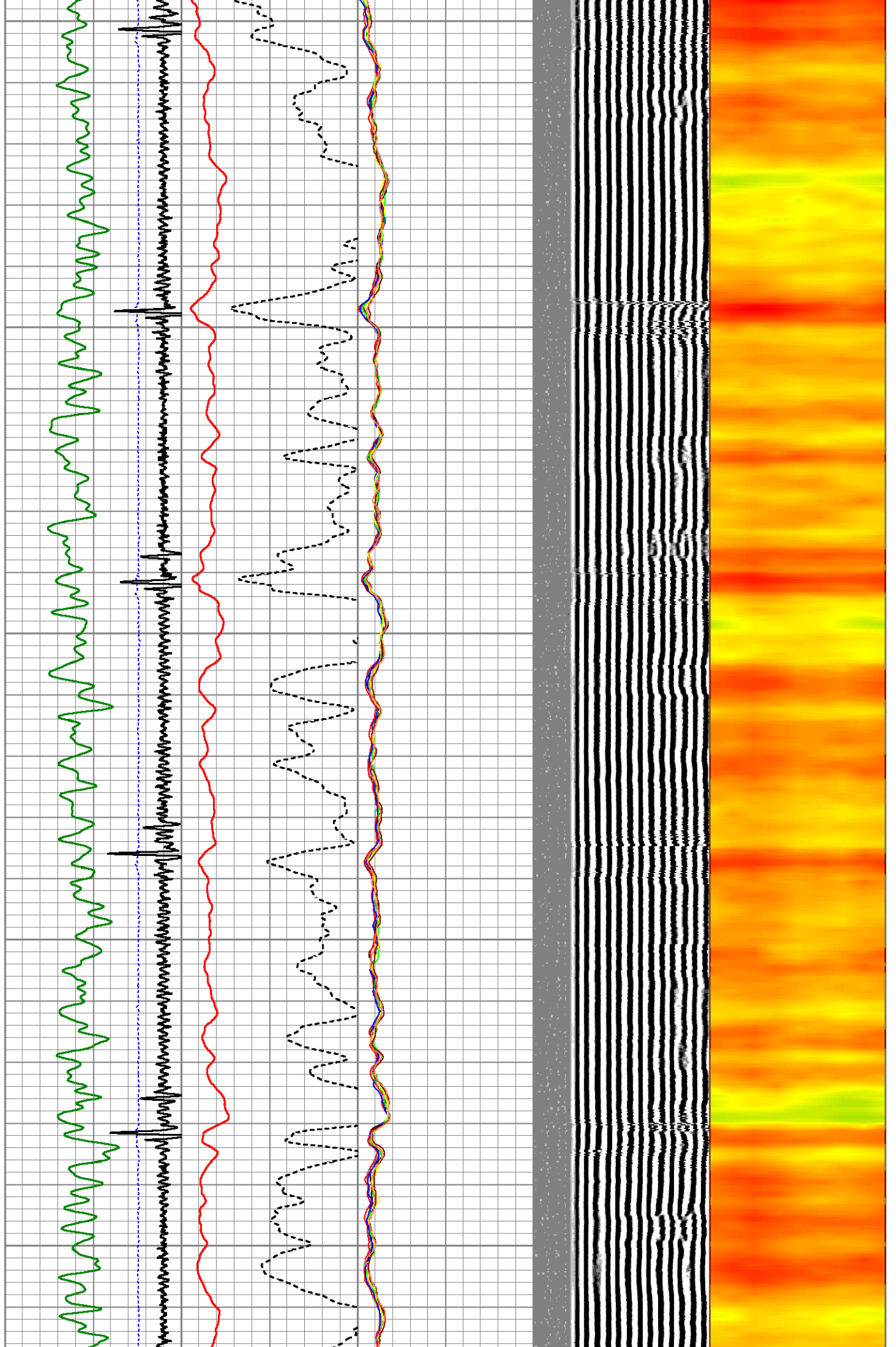
1550

1600

1650



1700
1750
1800
1850
1900

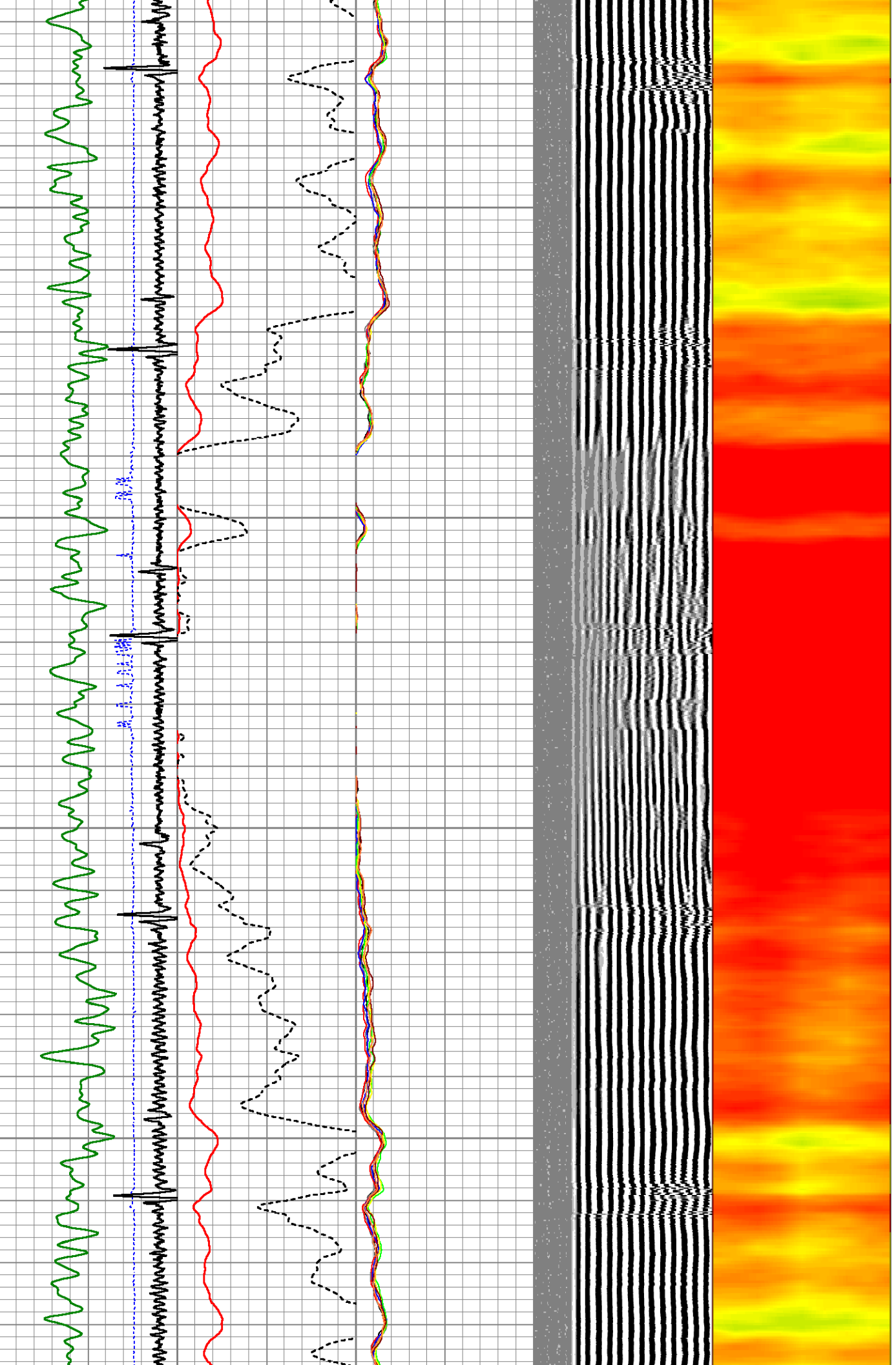


1950

2000

2050

2100



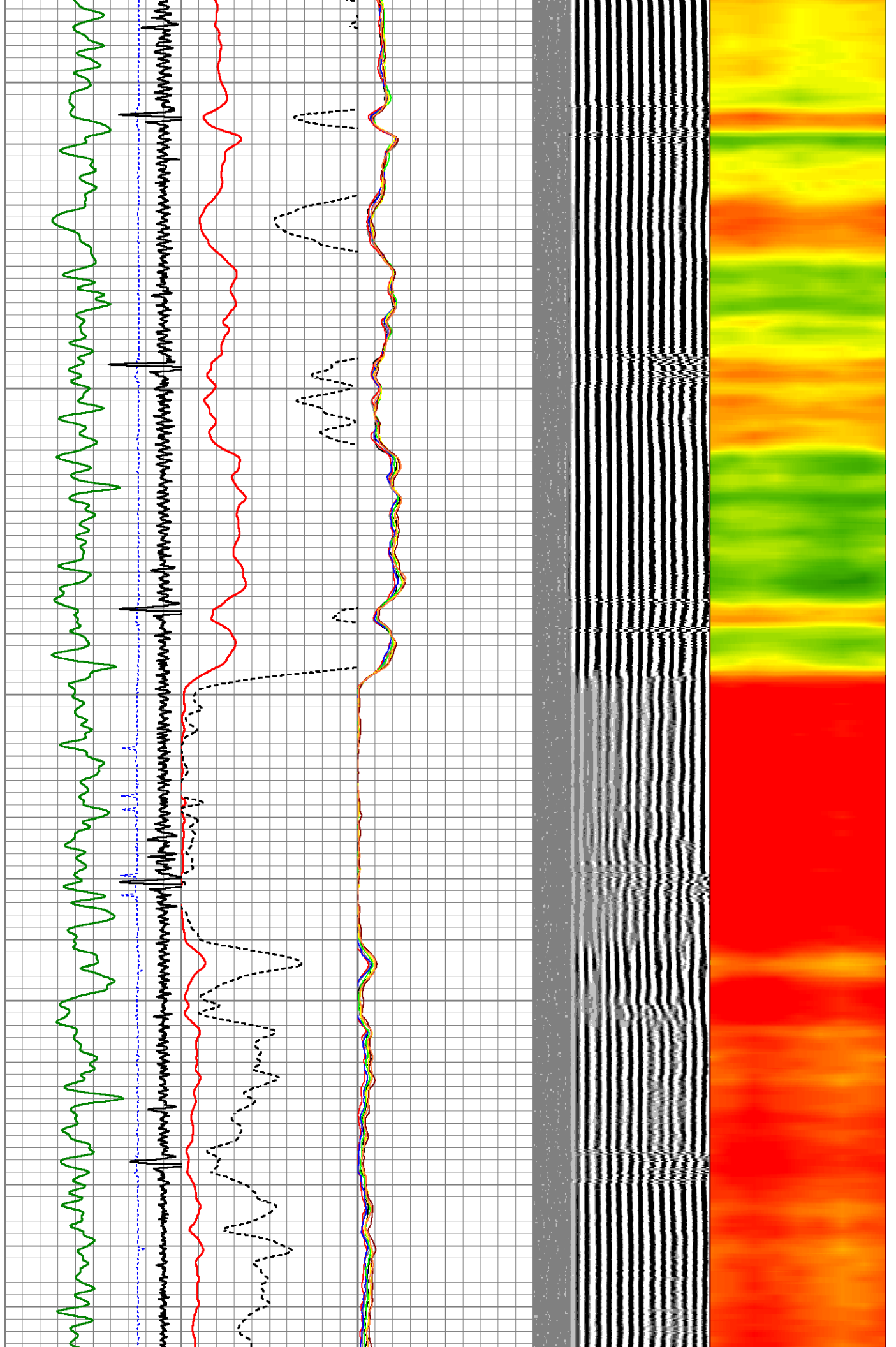
2150

2200

2250

2300

2350

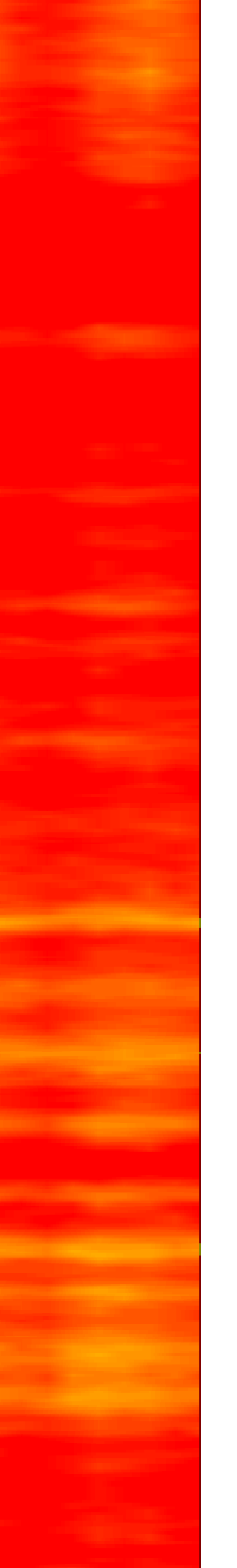
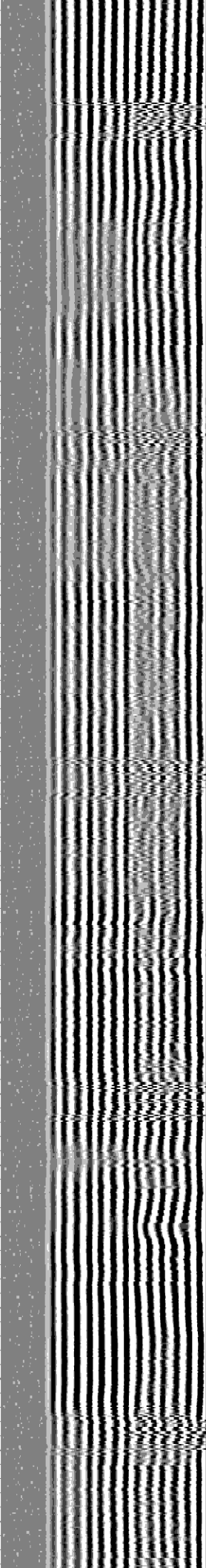
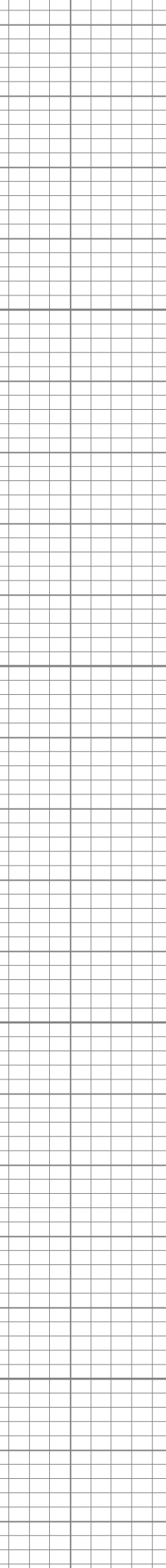
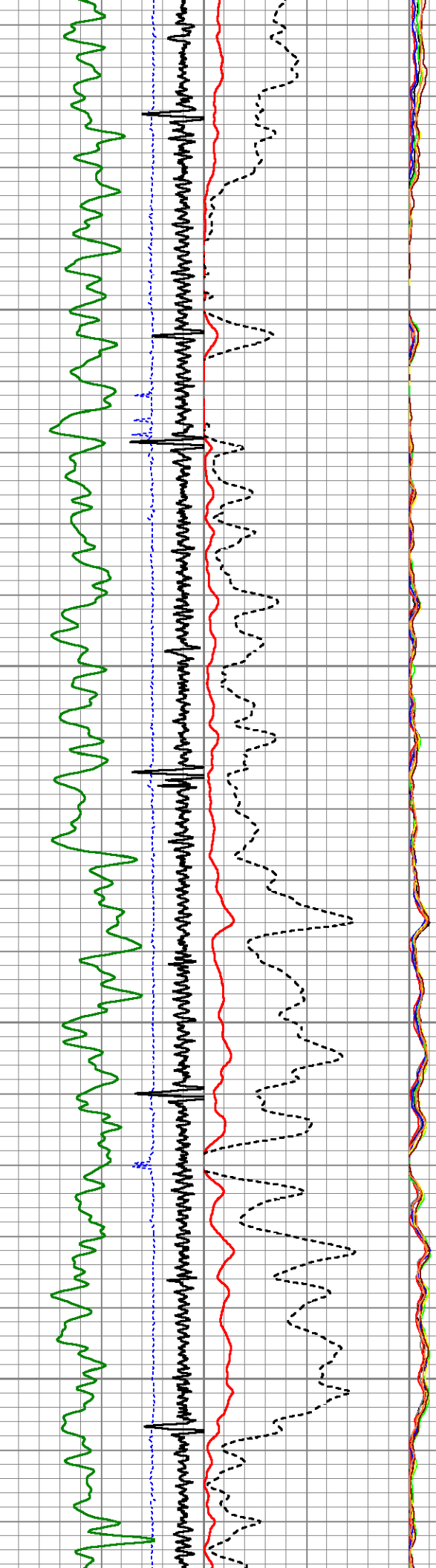


2400

2450

2500

2550

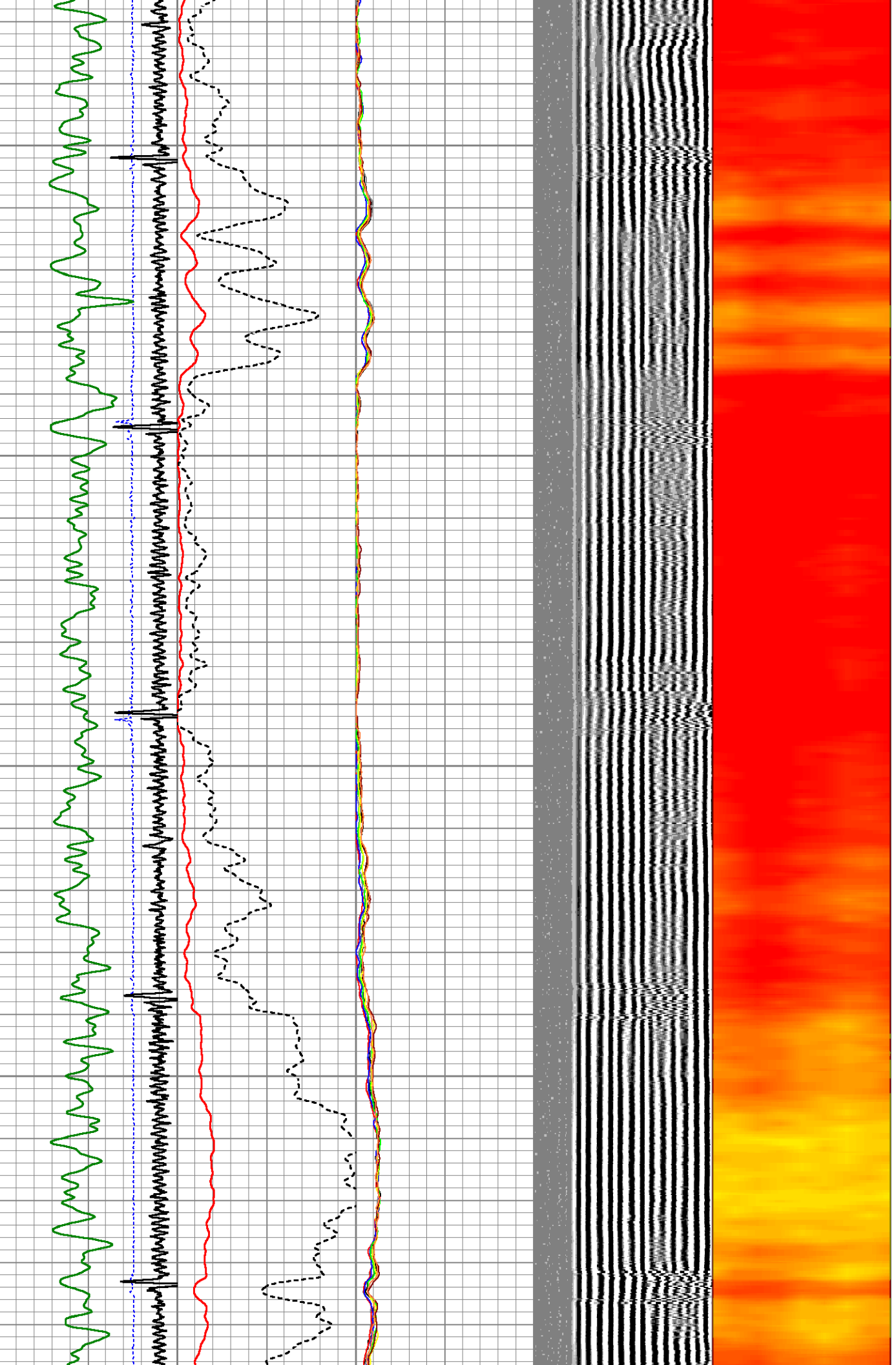


2600

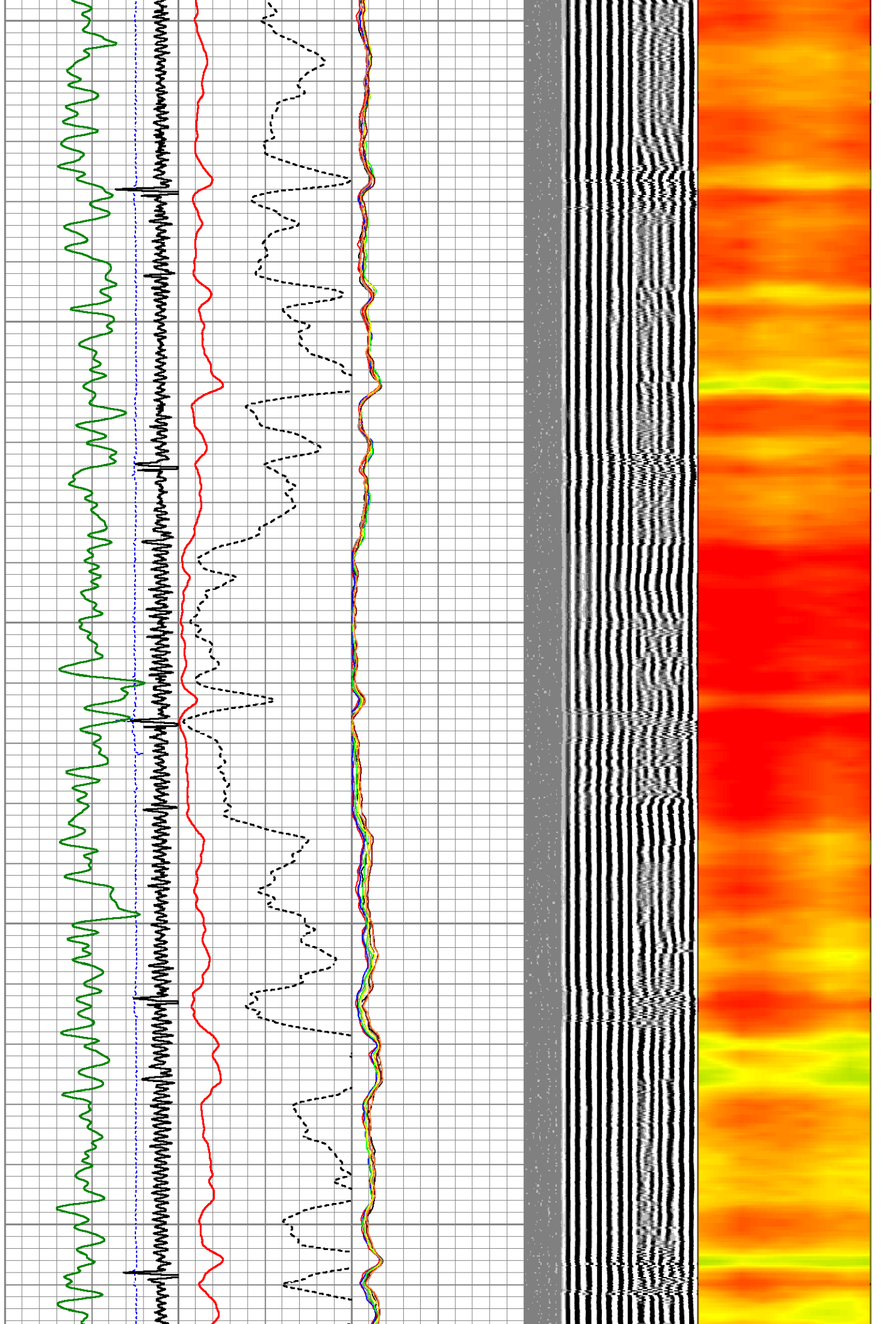
2650

2700

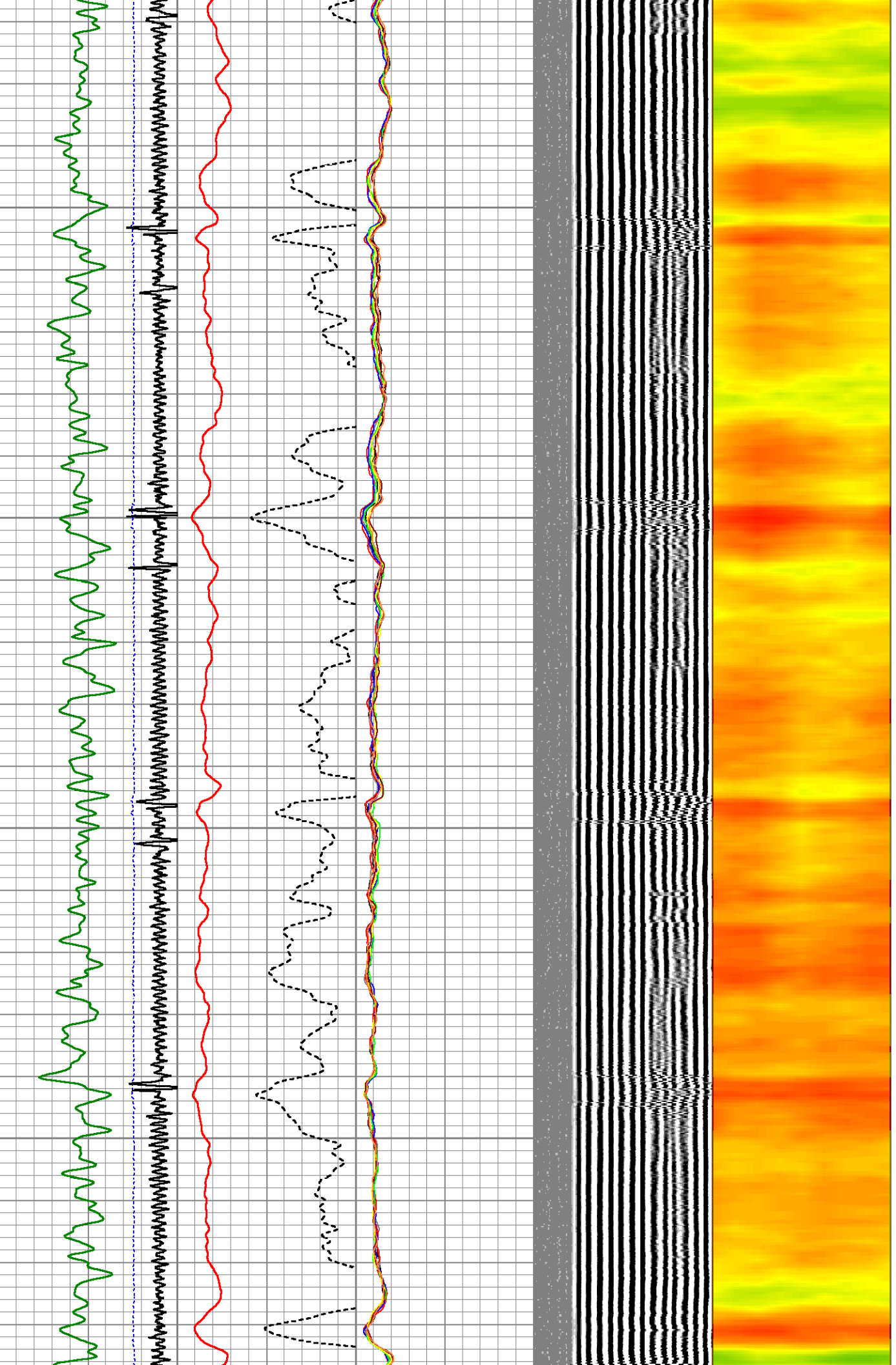
2750



2800
2850
2900
2950
3000



3050
3100
3150
3200



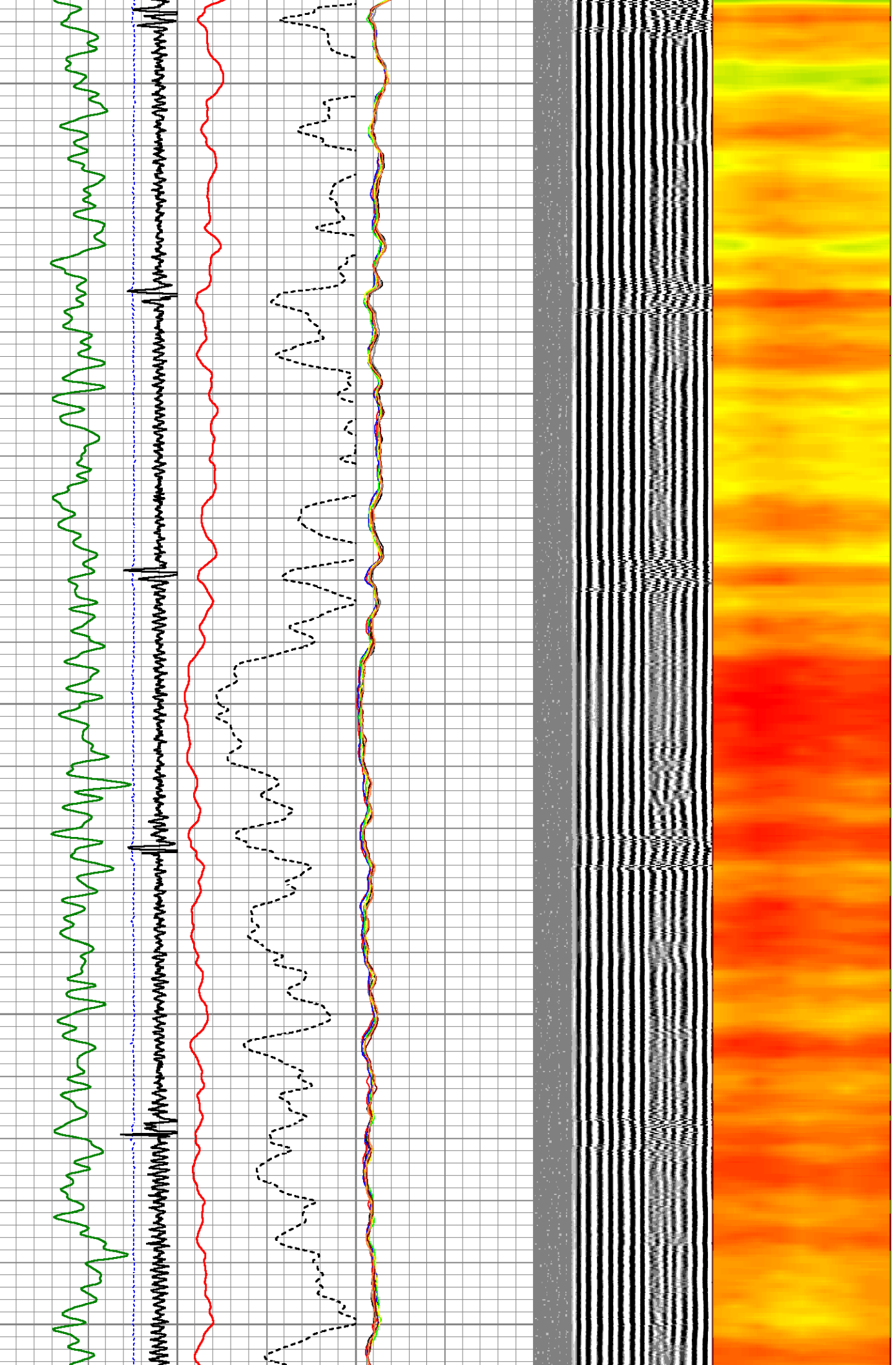
3250

3300

3350

3400

3450

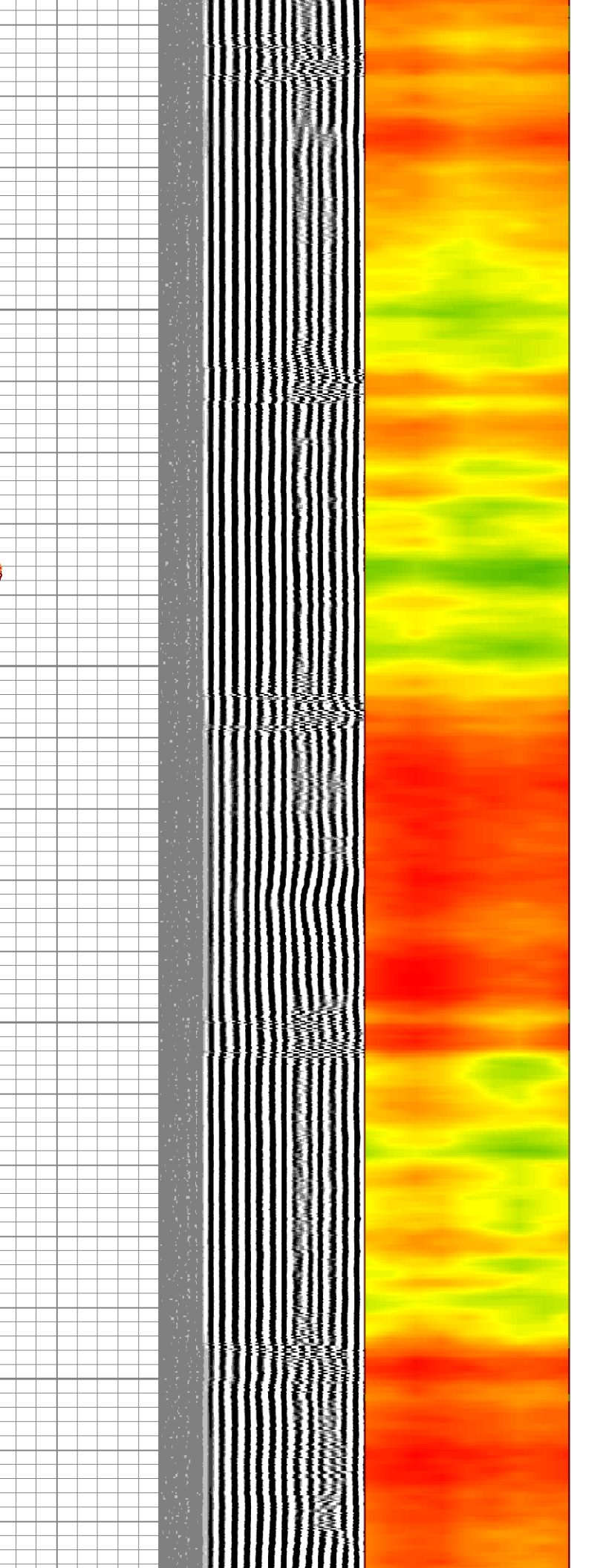
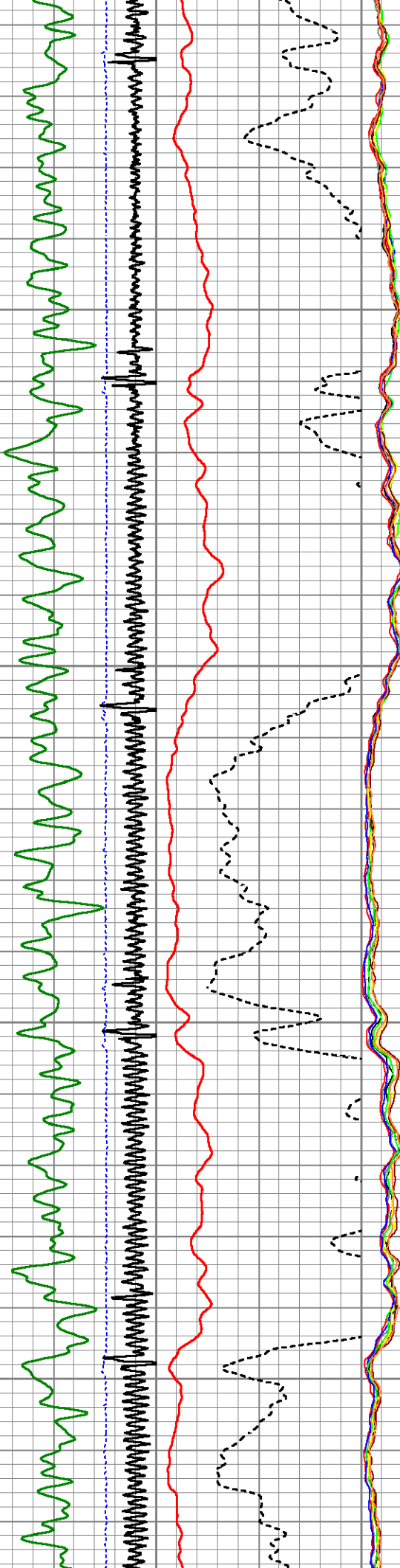


3500

3550

3600

3650

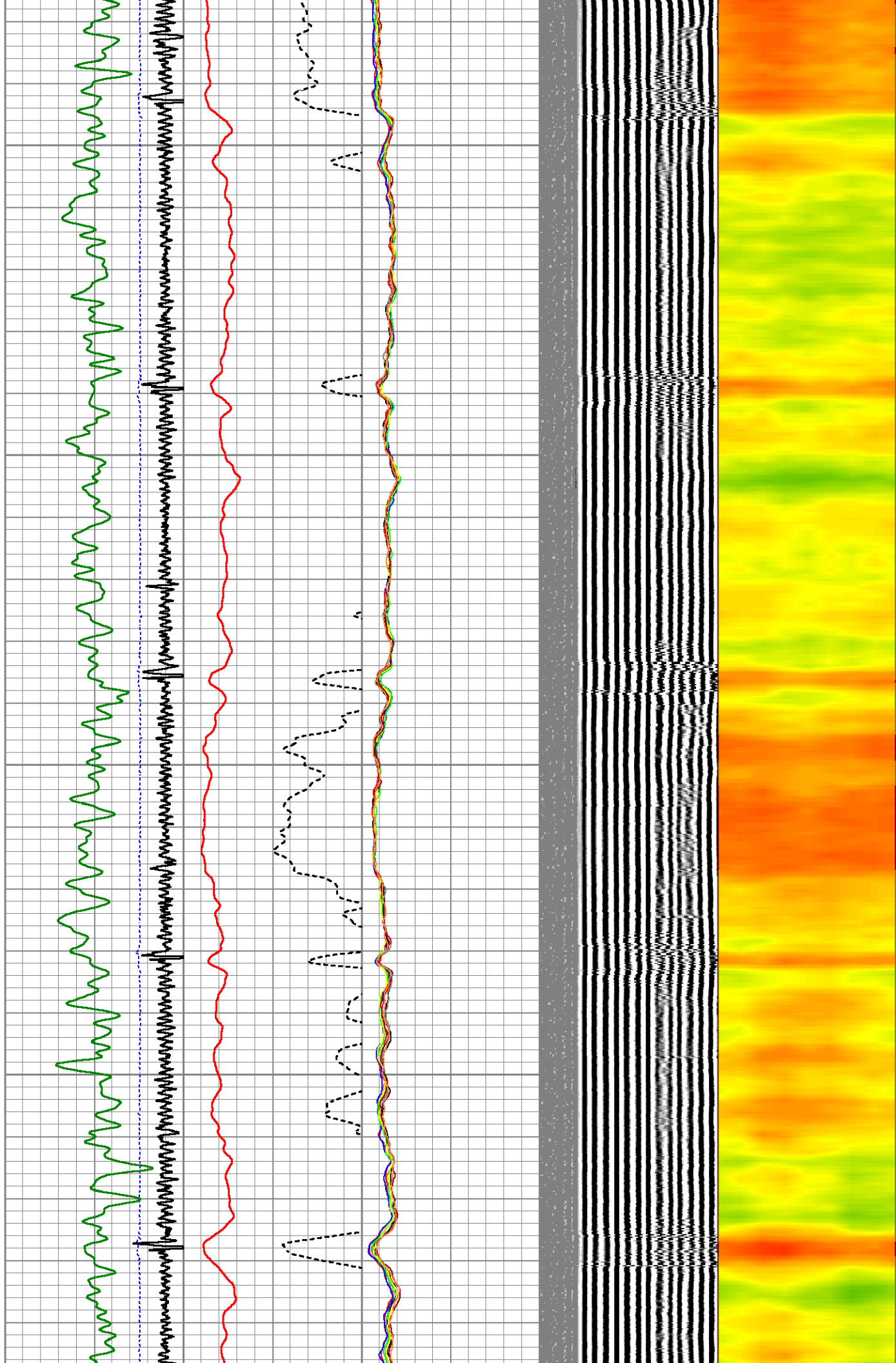


3700

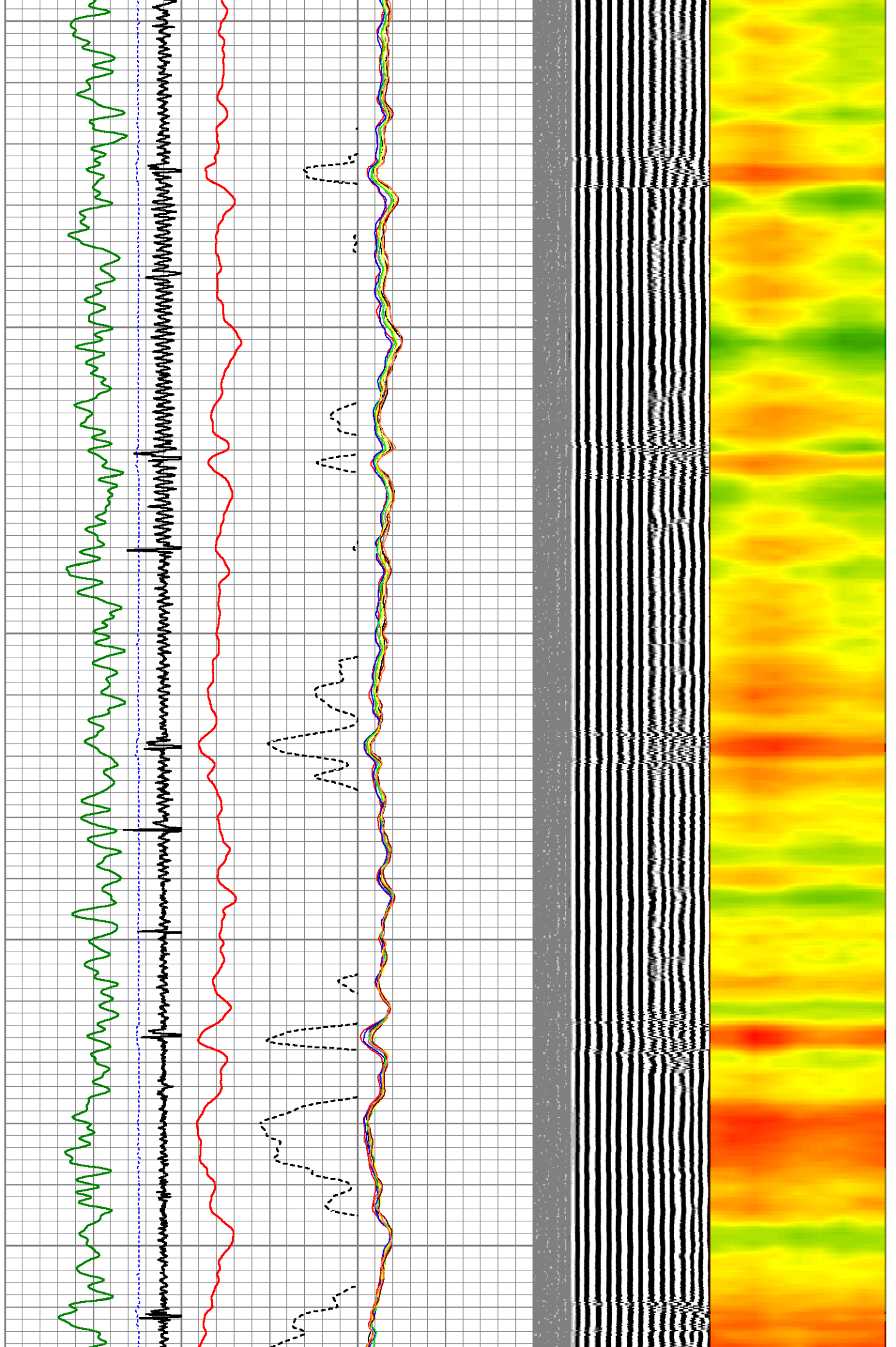
3750

3800

3850



3900
3950
4000
4050
4100

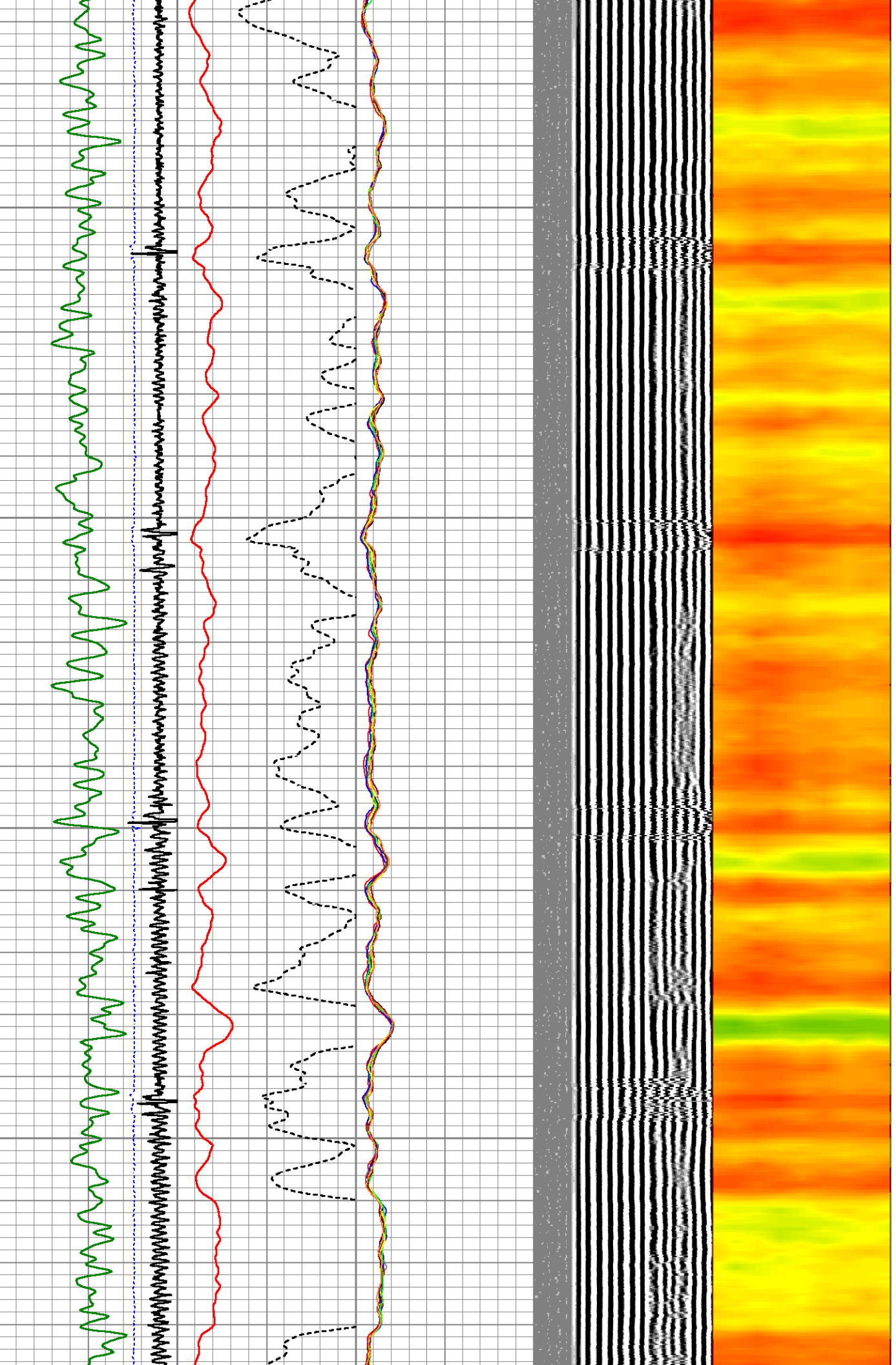


4150

4200

4250

4300



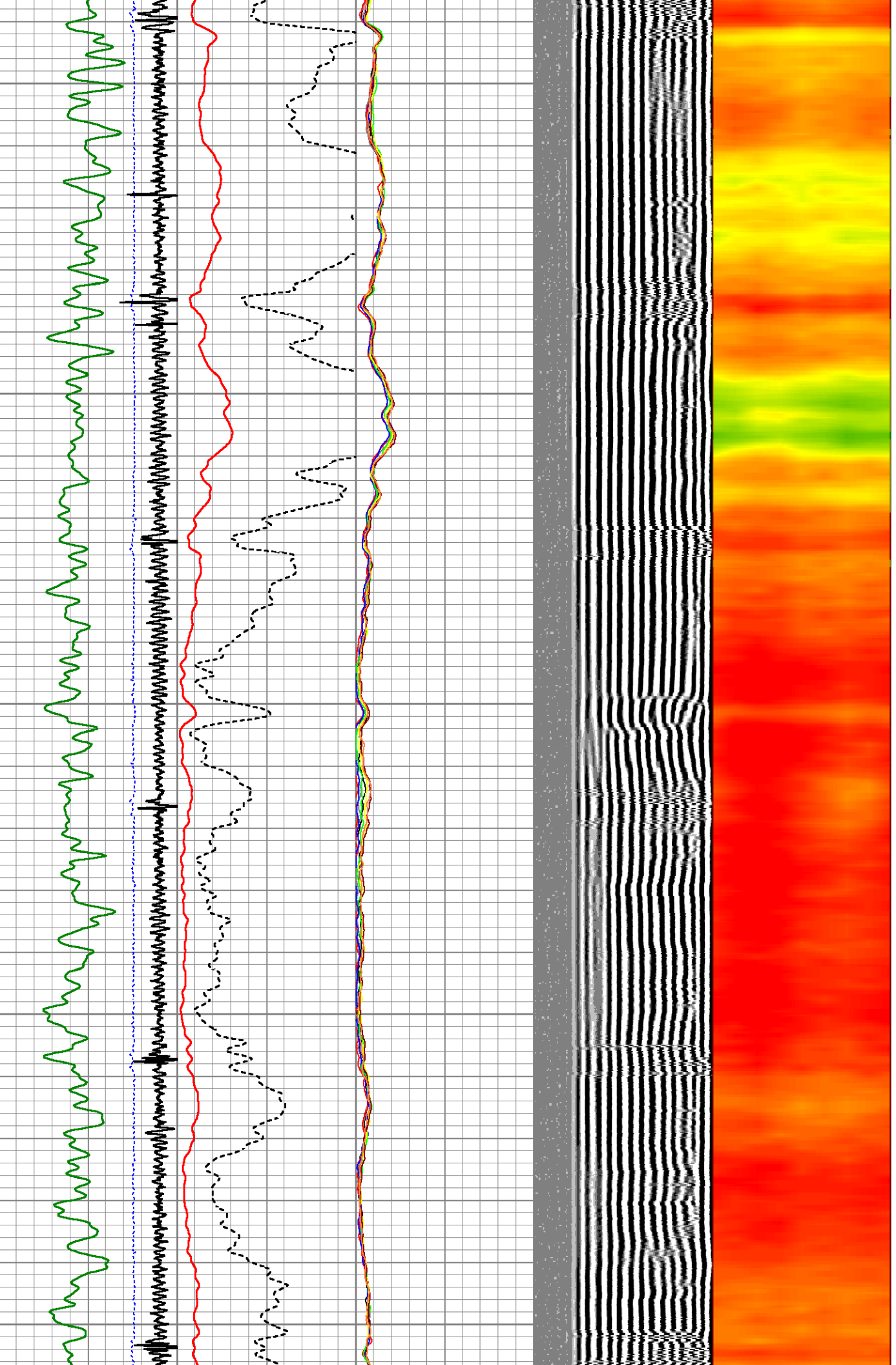
4350

4400

4450

4500

4550

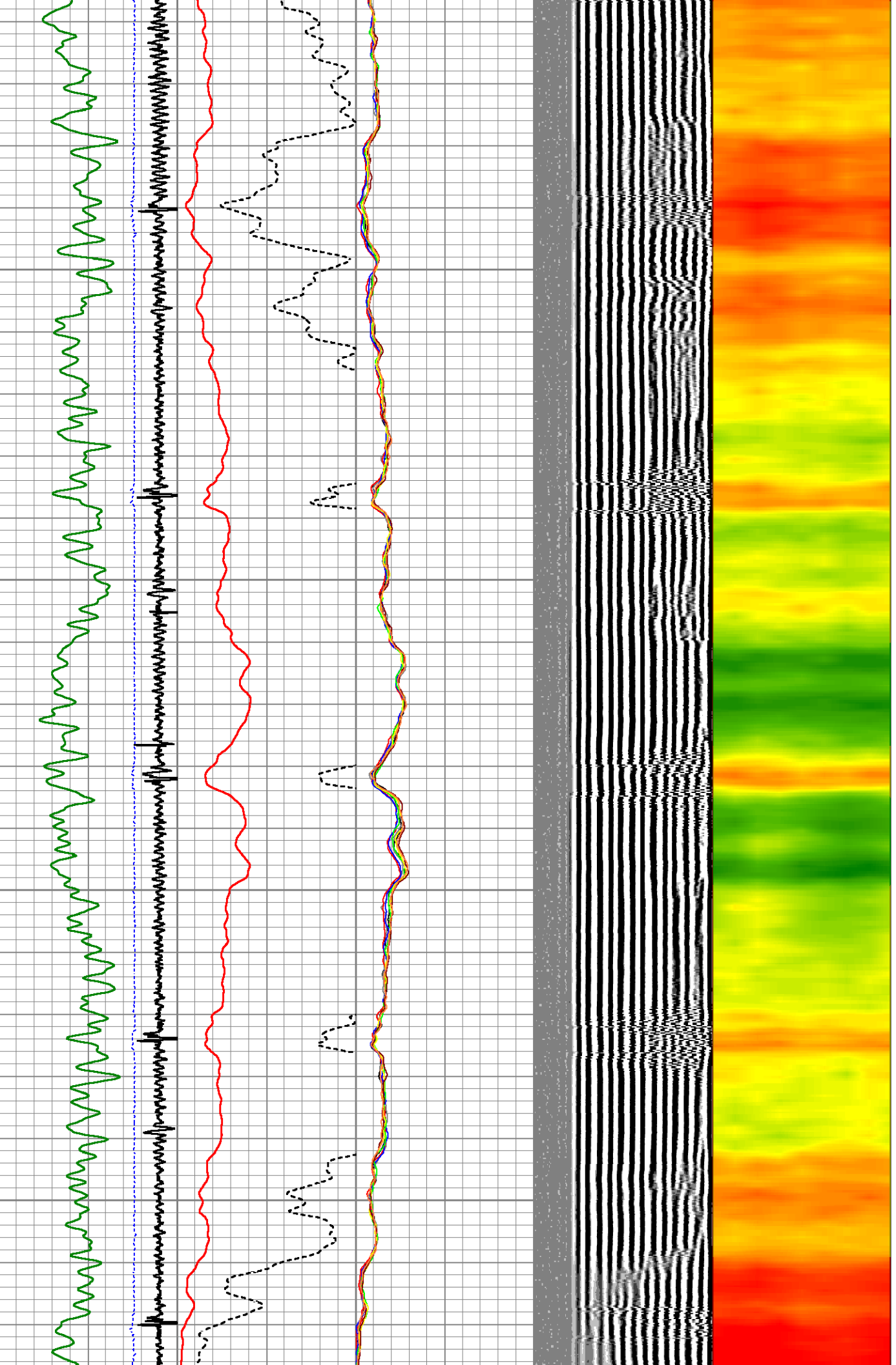


4600

4650

4700

4750

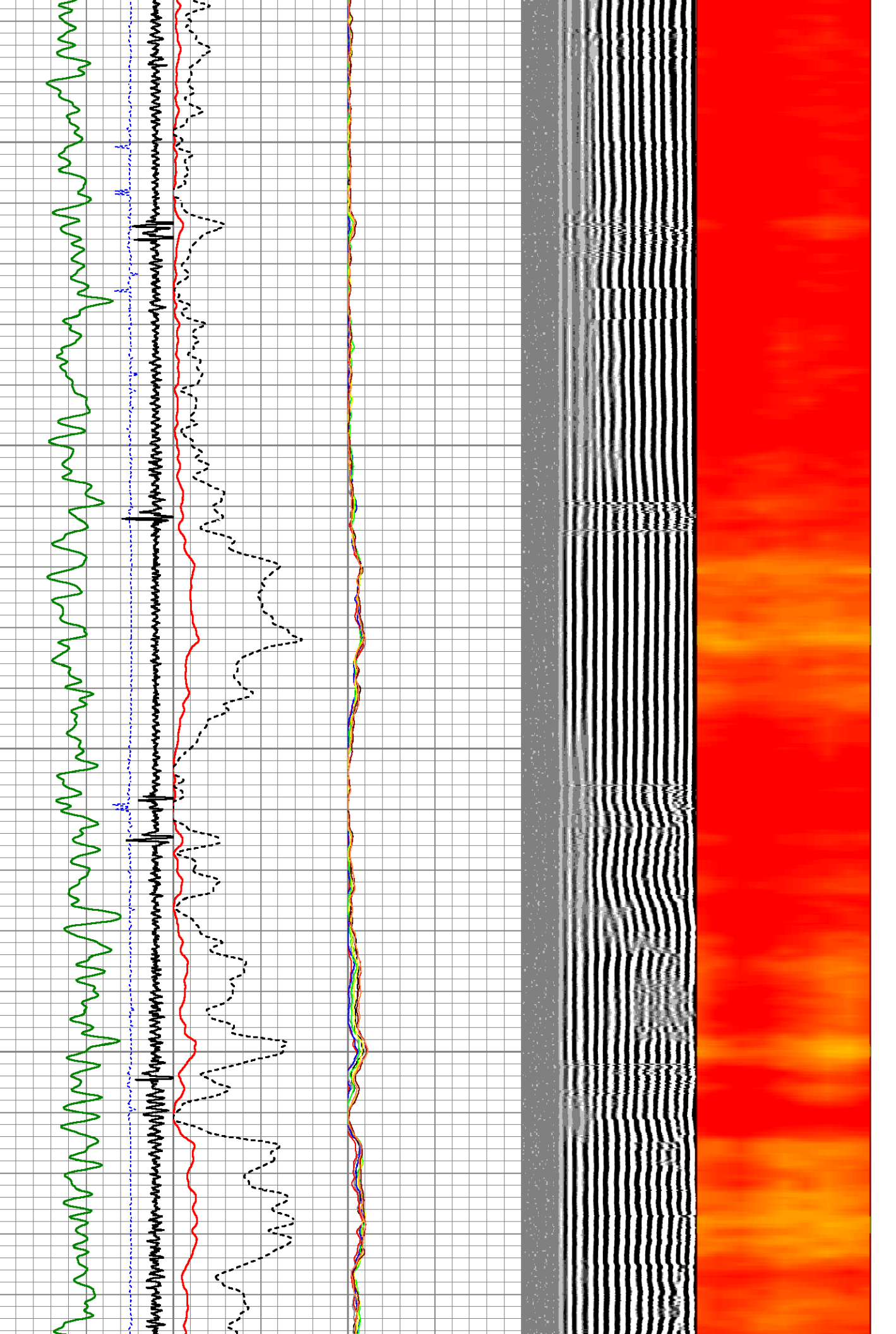


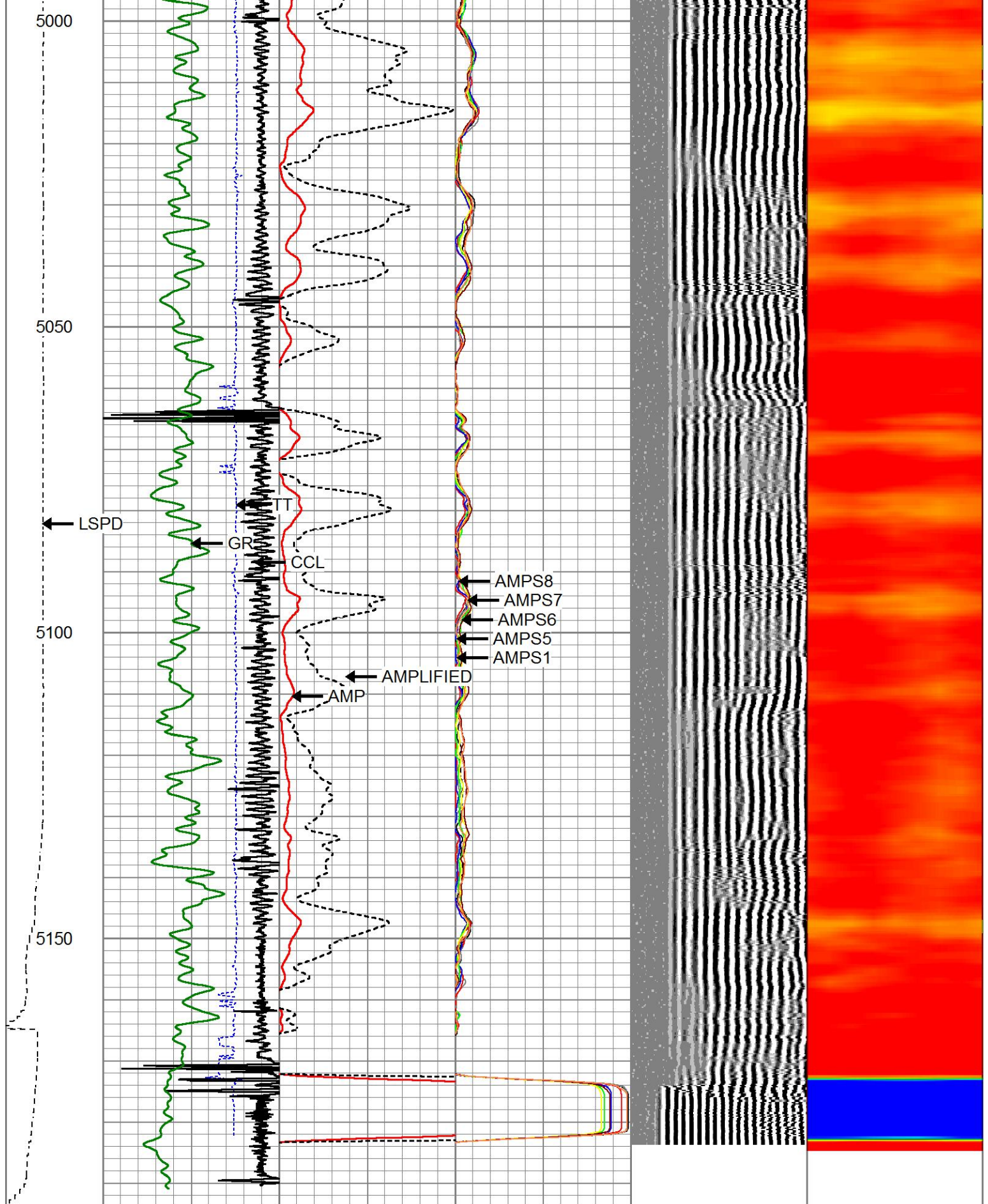
4800

4850

4900

4950





LSPD	650	TT (usec)	150	0	AMP (mV)	100	0	AMPS1	150	200	VDL (usec)	1200	1	Cement Map	8
(ft/min)	-9	CCL	1		AMPLIFIED		0	AMPS2	150						
0	250	0	GR (GAPI)	200	0	(mV)	20	0	AMPS3	150					
		200	GR (GAPI)	400				0	AMPS4	150					
								0	AMPS5	150					

0	AMPS6	150
0	AMPS7	150
0	AMPS8	150

Calibration Report

Database File flanigan01b-06h.db
Dataset Pathname pass40
Dataset Creation Tue Nov 19 17:14:57 2024

Gamma Ray Calibration Report

Serial Number: 27GRL10-XXXX
Tool Model: 27GRL10
Performed: (Not Performed)

Calibrator Value: 1.0 GAPI

Background Reading: 0.0 cps
Calibrator Reading: 1.0 cps

Sensitivity: 1.0000 GAPI/cps

Segmented Cement Bond Log Calibration Report

Serial Number: Greeley Ext Temp
Tool Model: 27SBT10

Calibration Casing Diameter: 7.000 in
Calibration Depth: 201.318 ft

Master Calibration, performed (Derived):

	Raw (v)		Calibrated (mv)		Results	
	Zero	Cal	Zero	Cal	Gain	Offset
3'	0.186	1.239	0.800	62.165	58.319	-10.075
CAL	0.000	1.575				
5'	0.068	1.291	0.800	62.165	50.169	-2.603
SUM						
S1	0.185	1.159	0.000	62.165	63.842	-11.819
S2	0.199	1.174	0.000	62.165	63.801	-12.712
S3	0.228	1.223	0.000	62.165	62.439	-14.225
S4	0.225	1.287	0.000	62.165	58.554	-13.185
S5	0.199	1.323	0.000	62.165	55.313	-11.016
S6	0.195	1.345	0.000	62.165	54.020	-10.512
S7	0.177	1.272	0.000	62.165	56.816	-10.080
S8	0.172	1.157	0.000	62.165	63.087	-10.825

Internal Reference Calibration, performed (Not Performed):

	Raw (v)		Calibrated (v)		Results	
	Zero	Cal	Zero	Cal	Gain	Offset
CAL	0.000	0.000	0.000	1.575	1.000	0.000

Air Zero Calibration, performed Mon Aug 05 11:02:31 2024:

	Raw (v)		Calibrated (v)		Results	
	Zero		Zero		Offset	

3'	0.000	0.000	0.000
5'	0.000	0.000	0.000
SUM			
S1	0.000	0.000	0.000
S2	0.000	0.000	0.000
S3	0.000	0.000	0.000
S4	0.000	0.000	0.000
S5	0.000	0.000	0.000
S6	0.000	0.000	0.000
S7	0.000	0.000	0.000
S8	0.000	0.000	0.000



Company	CIVITAS
Well	FLANIGAN 1B-6H
Field	Wattenberg
County	Weld
State	Colorado