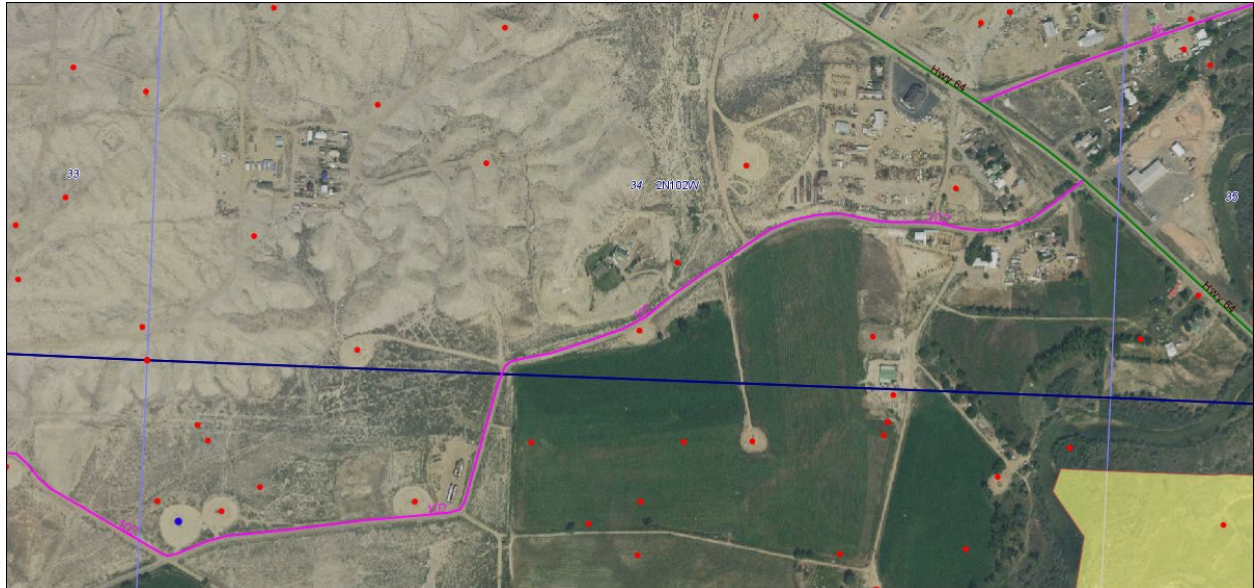


Newton Associated Unit D2X

API # 05-103-08685

Existing location, facilities & roads

To reach Newton Associated Unit D2X well location in NW $\frac{1}{4}$ of the NW $\frac{1}{4}$ of Section 3, T1N, R102W, 6th P.M., Rio Blanco County, Colorado. Proceed west from Rangely town on Colorado State Highway 64 for approximately 0.9 mile and turn left on to Rio Blanco County Road 102. Proceed south west for approximately 1.10 miles to the existing location and well access road.



There is no anticipated construction on any portion of the above-described roads. They will meet the necessary standards required to facilitate an orderly flow of traffic during the recompletion and production activities.

The proposed UIC conversion to injection will support the efficient management of our produced water and our Enhanced Oil Recovery efforts in the Rangely Weber Sand Unit. Improved economics associated with this UIC conversion will help prolong the life of the field and support ongoing production.

Scout Energy Partners will minimize impacts to wildlife and the surrounding ecosystems by utilizing the existing Newton Associated Unit 2X well pad, roads, and wellbore. This will eliminate the need for drilling and completion operations to take place as well as road and well pad construction. Also, by increasing our produced water injection capacity we reduce the possibility of having to use trucks to haul off excess water which will benefit wildlife species that experience adverse effects from increases in traffic and benefit the surrounding ecosystem by reducing vehicle emissions. Lastly, by converting this existing well to an injection well and increasing our produced water injection capacity we will reduce the injection pressures within our system which also reduced the chances of a flowline leak which can negatively affect the surrounding wildlife and ecosystems.

This UIC conversion is for a well on an existing pad with no production facilities or injection pumps on-site. Therefore, no adverse incremental noise, light, odor impacts to the surrounding receptors are expected during injection operations. There are no State Parks, State Trust Lands, or State Wildlife Areas within 1 mile of this wells location per the ECMC website. There are no designated outdoor activity areas within 1 mile of this wells location. There are no trails that support the above listed recreational activities within 1 miles of this wells location. There are no annual production hazardous air pollutant emissions impacts to the surrounding receptors during operations.

Water Resource - The nearest water of the state is 725 feet south is the nearest water resource the White River. Scout Energy Partners does not anticipate any impacts to any water resources in the area.

