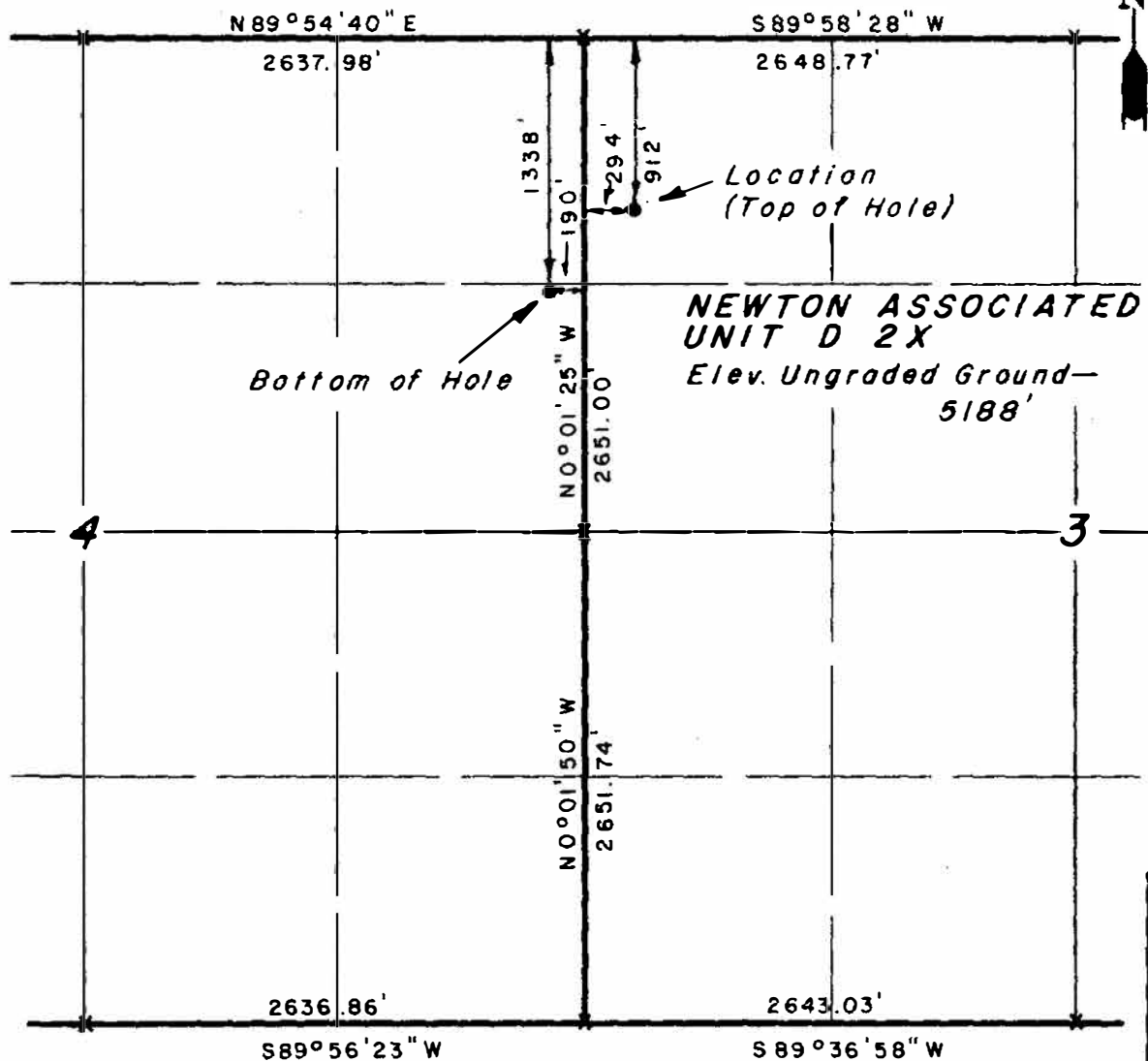




00043583

BEST COPY  
AVAILABLET1N, R102W, 6<sup>th</sup> P.M.

X = Section Corners Located

SCOUT ENERGY MANAGEMENT LLC

Well location, *Newton*  
*Associated Unit D 2X*, located  
as shown in the NW 1/4 NW 1/4  
Section 3, T1N, R102W, 6<sup>th</sup> P.M.  
Rio Blanco County, Colorado.

NOTE: LOCATION TO DRILL TO BOTTOM  
OF HOLE: S 48° 39' 52" W 644.92'

NOTE:

Elev. Ref. Pt.	S 9° 45' 39" E-200'	= 5185.29'
"	S 9° 45' 39" E-250'	= 5184.36'
"	S 80° 14' 21" W-150'	= 5188.74'
"	S 80° 14' 21" W-200'	= 5189.28'

## CERTIFICATE

THIS IS TO CERTIFY THAT THE ABOVE PLAT WAS PREPARED FROM  
FIELD NOTES OF ACTUAL SURVEYS MADE BY ME OR UNDER MY  
SUPERVISION AND THAT THE SAME ARE TRUE AND CORRECT TO THE  
BEST OF MY KNOWLEDGE AND BELIEF.

*Delbert J. ...*  
REGISTERED LAND SURVEYOR  
REGISTRATION NO 5839  
STATE OF Colorado

UINTAH ENGINEERING & LAND SURVEYING  
P.O. BOX 9 ~ 85 SOUTH - 200 EAST  
VERNAL, UTAH - 84078

SCALE	1" = 1000'	DATE	1/22/81
PARTY	NM, BW RS	REFERENCES	GLO PLAT
WEATHER	FAIR, COOL	FILE	CHEVRON USA, INC.

COLO. OIL &amp; GAS COM. COMM.

FEB 24 1981

RECEIVED