

Well Name & API: **Schmerge 44-4, 05-123-23143**

Flowline Abandonment Type:

Full Removal

Flowlines

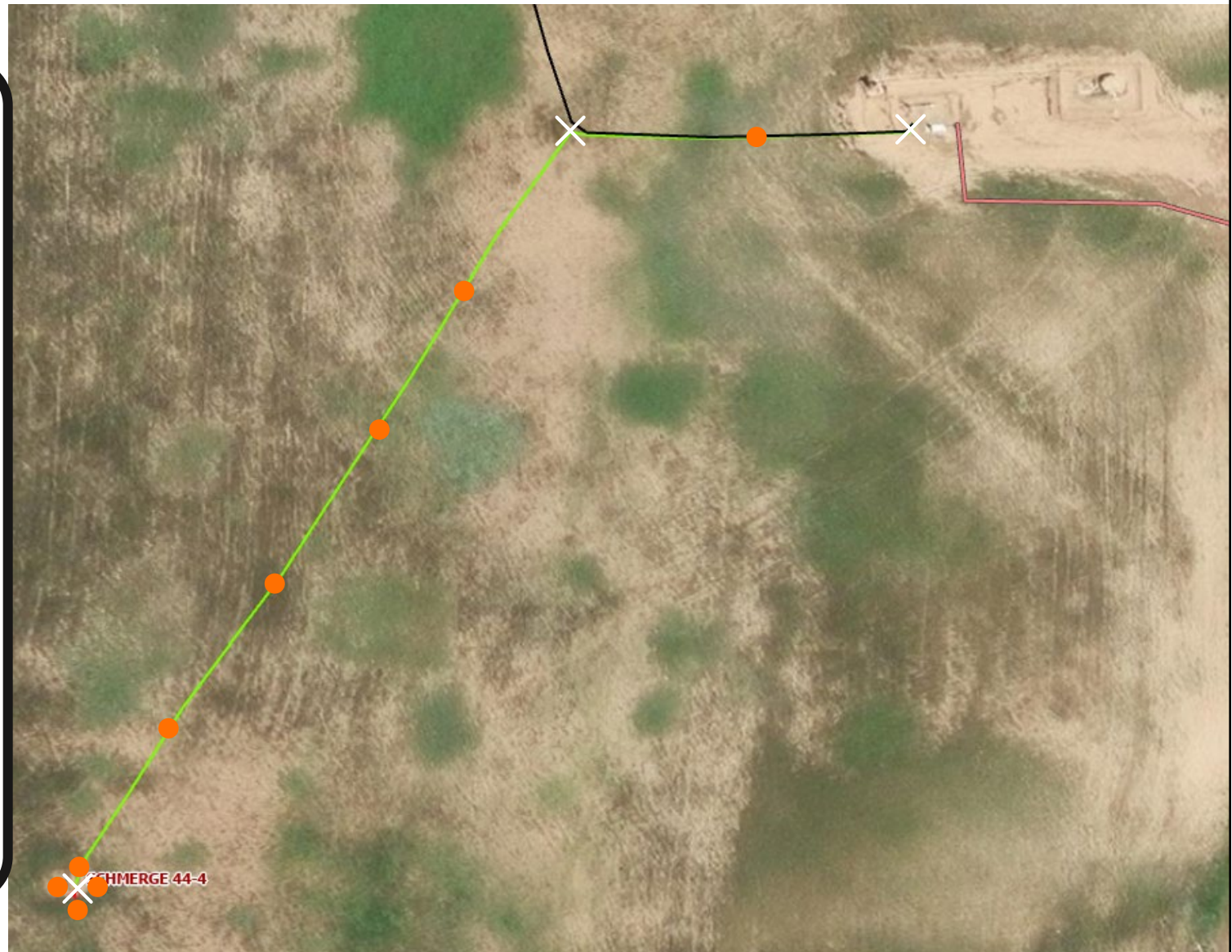
- Abandoned
- Active
- Out of Service
- Pre-commissioned
- Removed
- Turned into Air Line
- Area of Conflict
(Proposed Abandon-in-Place Area)
- Proposed Soil Sample Location
- Field Screening Location

Wells

- Active
- Abandoned Location
- Dry & Abandoned
- Plugged & Abandoned
- Producing
- Shut-In
- Temporarily Abandoned

Third-Party Pipelines

- NWI Wetlands



Well Latitude/Longitude: 40.423140/-104.890420

Flowline Length (ft): 760

Flowline Point A Latitude/Longitude: 40.42315538/-104.89041842

Flowline Point B Latitude/Longitude: 40.42458371/-104.88884542

Created By: Clara Jenck
Date: 12/12/2024

