

Legend

★ Site Location

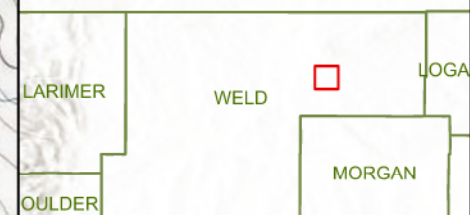
0 1,000 2,000
Feet



Bison IV Operating

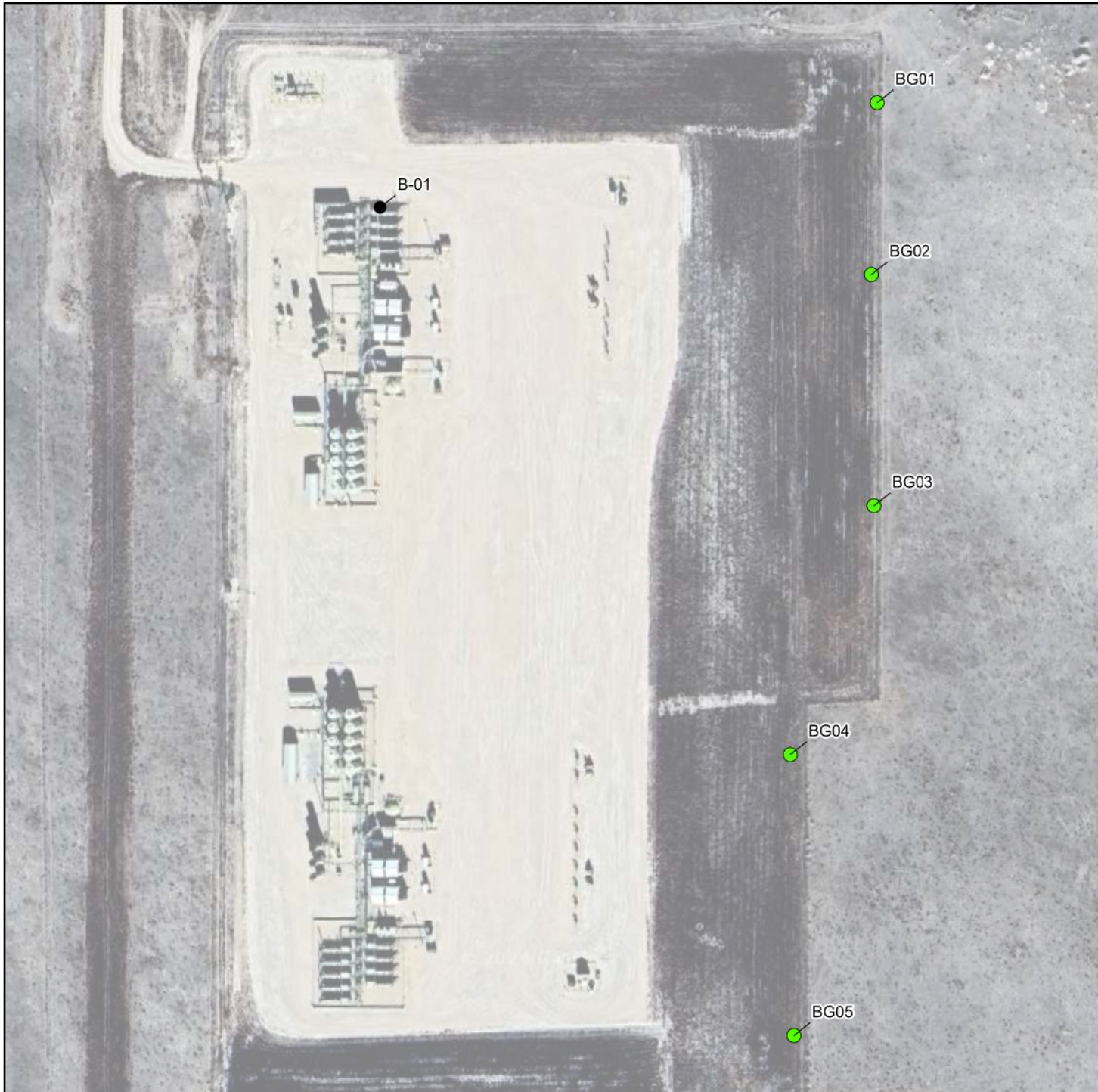
**Figure 1. Shull #5
Site Location Map**

40.711378, -104.022585
SESW, Sec 31, T9N, R59W, 6PM
Weld County, CO



Author: JG Date: 12/26/2024

Data Sources: Esri, CGIAR, USGS, Maxar



Legend

- Background Soil Sample
- Soil Sample

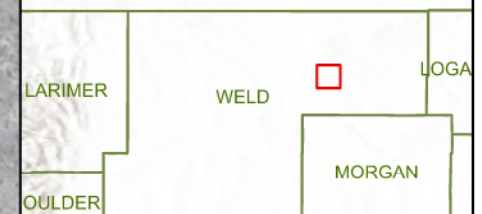
0 80 160
Feet



Bison IV Operating

**Figure 2. Shull #5
Soil Sample Location Map**

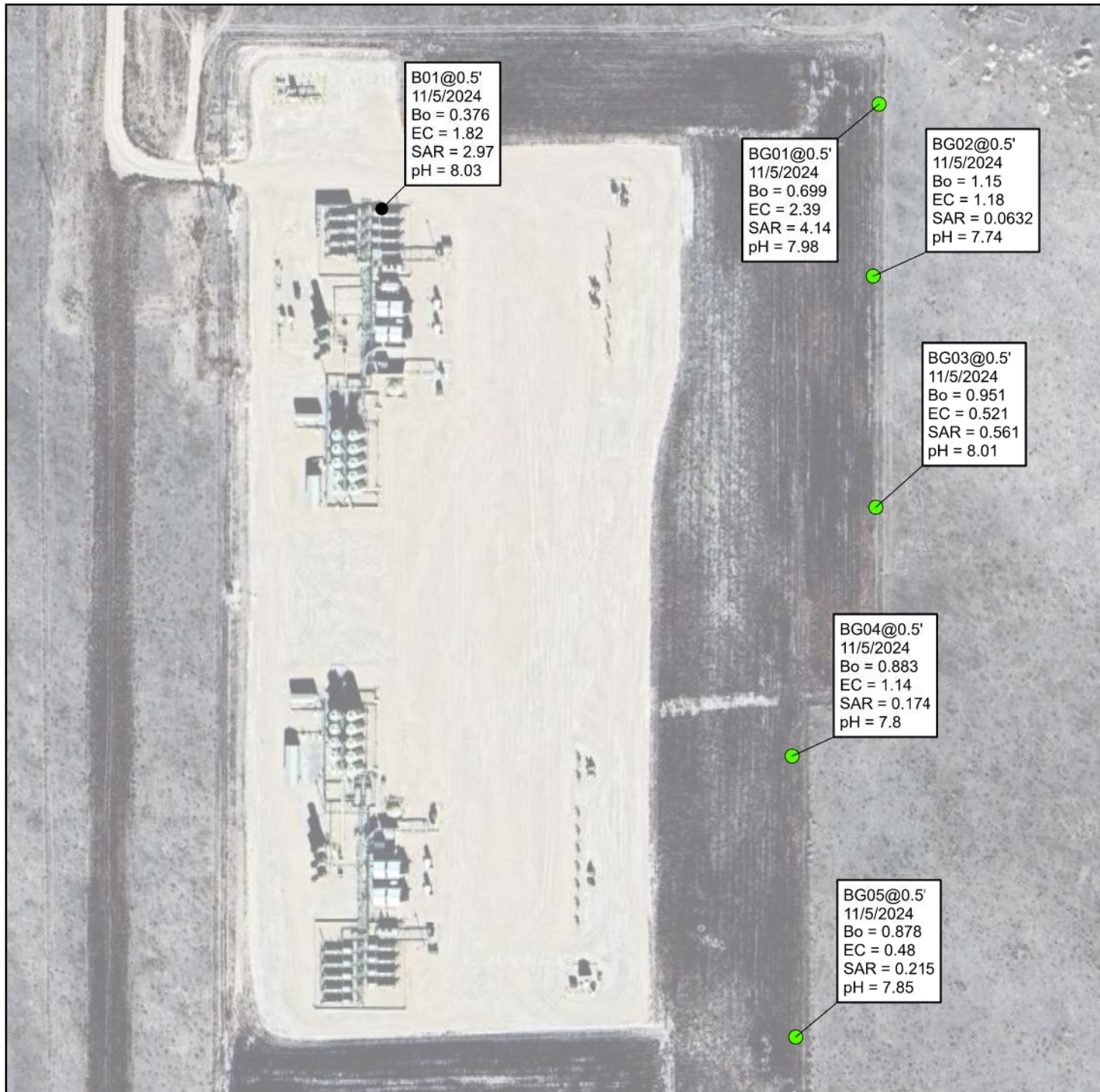
40.711378, -104.022585
SESW, Sec 31, T9N, R59W, 6PM
Weld County, CO



**QUANDARY
CONSULTANTS**

Author: JG Date: 12/26/2024

Data Sources: Esri, CGIAR, USGS, Google Earth 2023



Legend

- Background Soil Sample
- Soil Sample

Parameters

Sample Location @ Depth (ft.)
Sample Date
Bo = Boron (mg/L)
EC = Electrical Conductivity (mmhos/cm)
SAR = Sodium Absorption Ratio
pH = pH (pH Units)

mg/L = Milligrams per Liter
mmhos/cm = millimhos per centimeter

Note: Values presented in **BOLD** indicate an exceedance to Table 915-1 GWSSLs. Values presented in **BOLD** indicate an exceedance to both Table 915-1 GWSSLs and representative background concentrations. Values not present for a sample indicate non-detect or detections < Table 915-1 criteria.

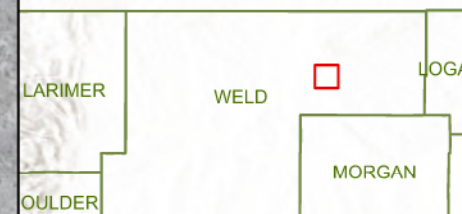
0 80 160
Feet



Bison IV Operating

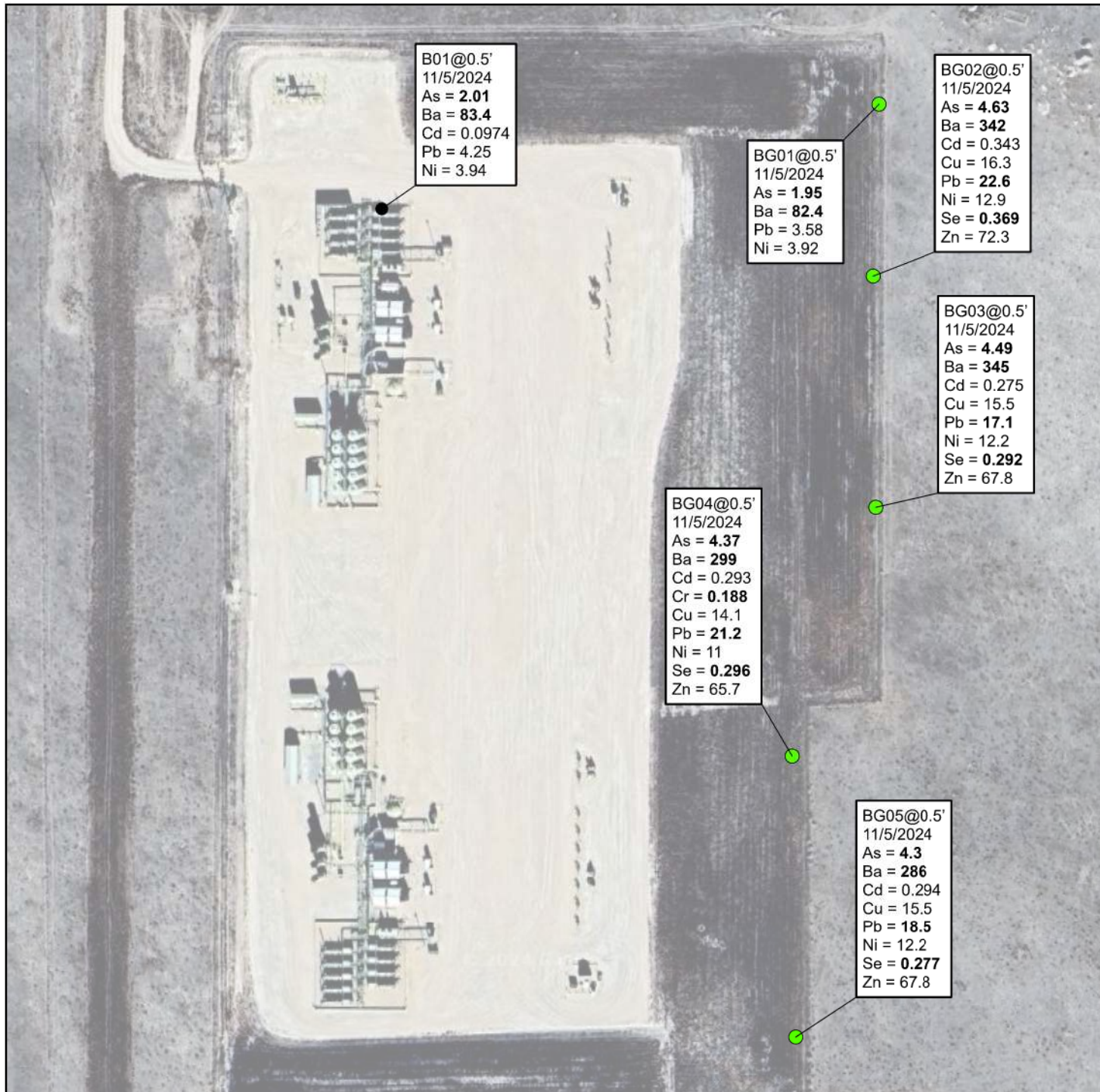
Figure 3. Shull #5 Soil Suitability Results Map

40.711378, -104.022585
SESW, Sec 31, T9N, R59W, 6PM
Weld County, CO



Author: JG Date: 12/26/2024

Data Sources: Esri, CGIAR, USGS, Google Earth 2023



Legend

- Background Soil Sample
- Soil Sample

Parameters

Sample Location @ Depth (ft.)
Sample Date
As = Arsenic (mg/kg)
Ba = Barium (mg/kg)
Cd = Cadmium (mg/kg)
Cr = Chromium (mg/kg)
Cu = Copper (mg/kg)
Pb = Lead (mg/kg)
Ni = Nickel (mg/kg)
Se = Selenium (mg/kg)
Zn = Zinc (mg/kg)

mg/kg = Milligrams per Kilogram

Note: Values presented in **BOLD** indicate an exceedance to Table 915-1 GWSSLs. Values presented in **BOLD** indicate an exceedance to both Table 915-1 GWSSLs and representative background concentrations. Values not present for a sample indicate non-detect or detections < Table 915-1 criteria.

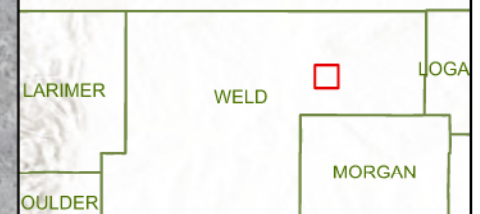
0 80 160 Feet



Bison IV Operating

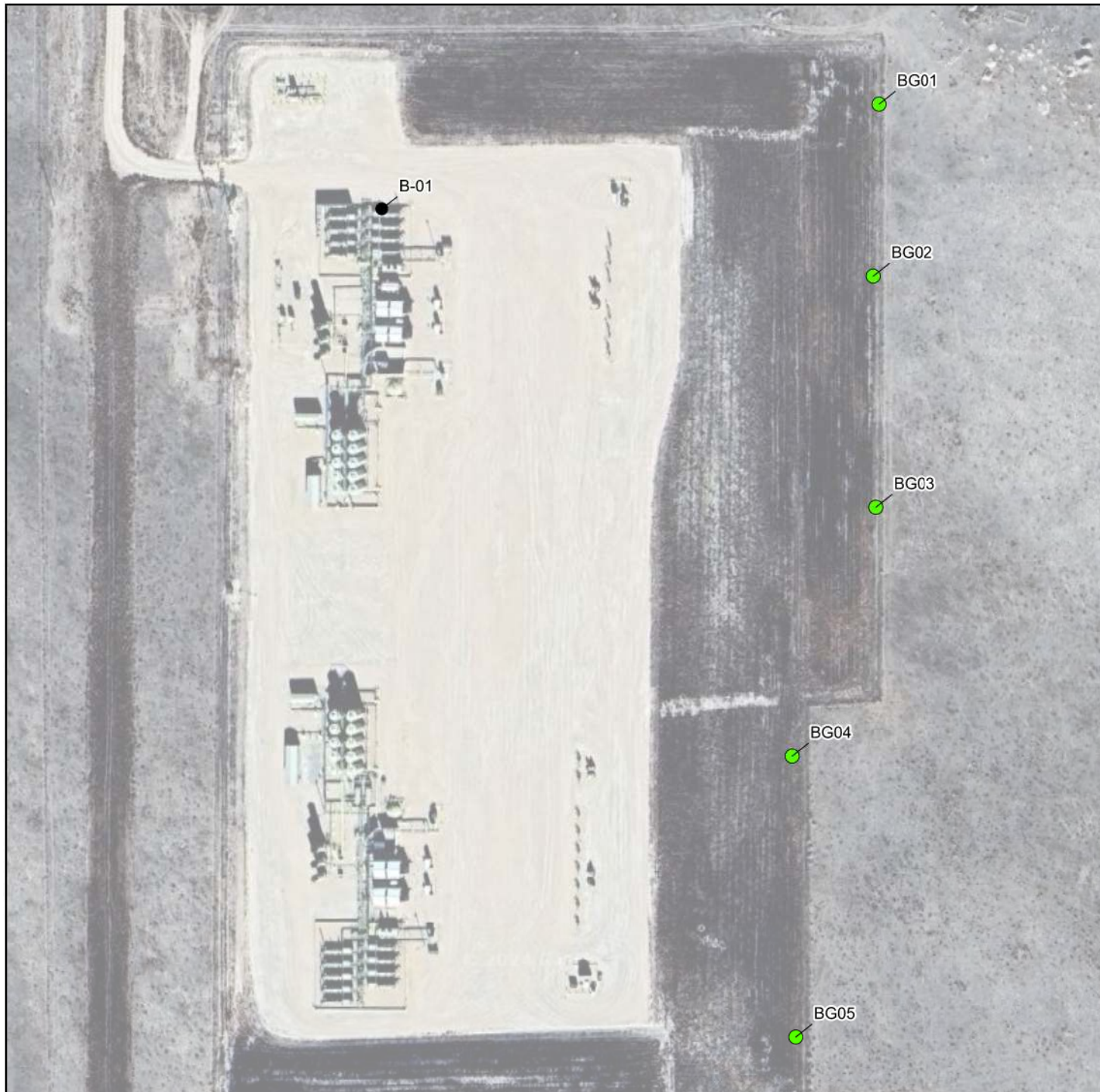
Figure 4. Shull #5
Metals Results Map

40.711378, -104.022585
SESW, Sec 31, T9N, R59W, 6PM
Weld County, CO



Author: JG Date: 12/26/2024

Data Sources: Esri, CGIAR, USGS, Google Earth 2023



Legend

- Background Soil Sample
- Soil Sample

Note: There were no exceedances or detections for Organics results sampled on 11/5/2024.

mg/kg = Milligrams per Kilogram

Note: Values presented in **BOLD** indicate an exceedance to Table 915-1 GWSSLs. Values presented in **BOLD** indicate an exceedance to both Table 915-1 GWSSLs and representative background concentrations. Values not present for a sample indicate non-detect or detections < Table 915-1 criteria.

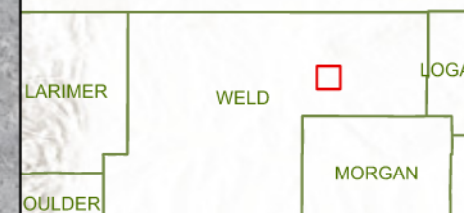
0 80 160
Feet



Bison IV Operating

Figure 5. Shull #5
Organics Results Map

40.711378, -104.022585
SESW, Sec 31, T9N, R59W, 6PM
Weld County, CO



QUANDARY
CONSULTANTS

Author: JG Date: 12/26/2024

Data Sources: Esri, CGIAR, USGS, Google Earth 2023