



**COMPENSATED
DENSITY/NEUTRON
PE LOG**

Company	ST. CROIX OPERATING, INC.	Company	ST. CROIX OPERATING, INC.
Well	PRAIRIE RIDGE #1	Well	PRAIRIE RIDGE #1
Field	UNNAMED	Field	UNNAMED
County	WASHINGTON	County	WASHINGTON
State	COLORADO	State	COLORADO
Location:	1788 FSL & 1166 FEL	API # :	05-121-11103-0000
Permanent Datum	GROUND LEVEL	Elevation	4485
Log Measured From	KELLY BUSHING 8' A.G.L	K.B.	4493
Drilling Measured From	KELLY BUSHING	D.F.	4491
		G.L.	4485

Date	9/23/24
Run Number	ONE
Depth Driller	3950
Depth Logger	3949
Bottom Logged Interval	3925
Top Log Interval	3000
Casing Driller	8 625 @ 445
Casing Logger	445
Bit Size	7.875
Type Fluid in Hole	CHEMICAL MUD
Density / Viscosity	9.3/71
PH / Fluid Loss	8.0/9.2
Source of Sample	FLOWLINE
Rm @ Meas. Temp	1.60 @ 68F
Rmf @ Meas. Temp	1.20 @ 68F
Rmc @ Meas. Temp	1.92 @ 68F
Source of Rmf / Rmc	MEASUREMENT
Rm @ BHT	.938 @ 116F
Time Circulation Stopped	2 HOURS
Time Logger on Bottom	11:00 A.M.
Maximum Recorded Temperature	116F
Equipment Number	3802
Location	HAYS, KANSAS
Recorded By	COLE ROBBEN
Witnessed By	WESTON LAFON

<<< Fold Here >>>

All interpretations are opinions based on inferences from electrical or other measurements and we cannot and do not guarantee the accuracy or correctness of any interpretation, and we shall not, except in the case of gross or willful negligence on our part, be liable or responsible for any loss, costs, damages, or expenses incurred or sustained by anyone resulting from any interpretation made by any of our officers, agents or employees. These interpretations are also subject to our general terms and conditions set out in our current Price Schedule.

Comments

THANK YOU FOR USING ELI WIRELINE SERVICES, HAYS, KS. (785) 628-6395

DIRECTIONS:

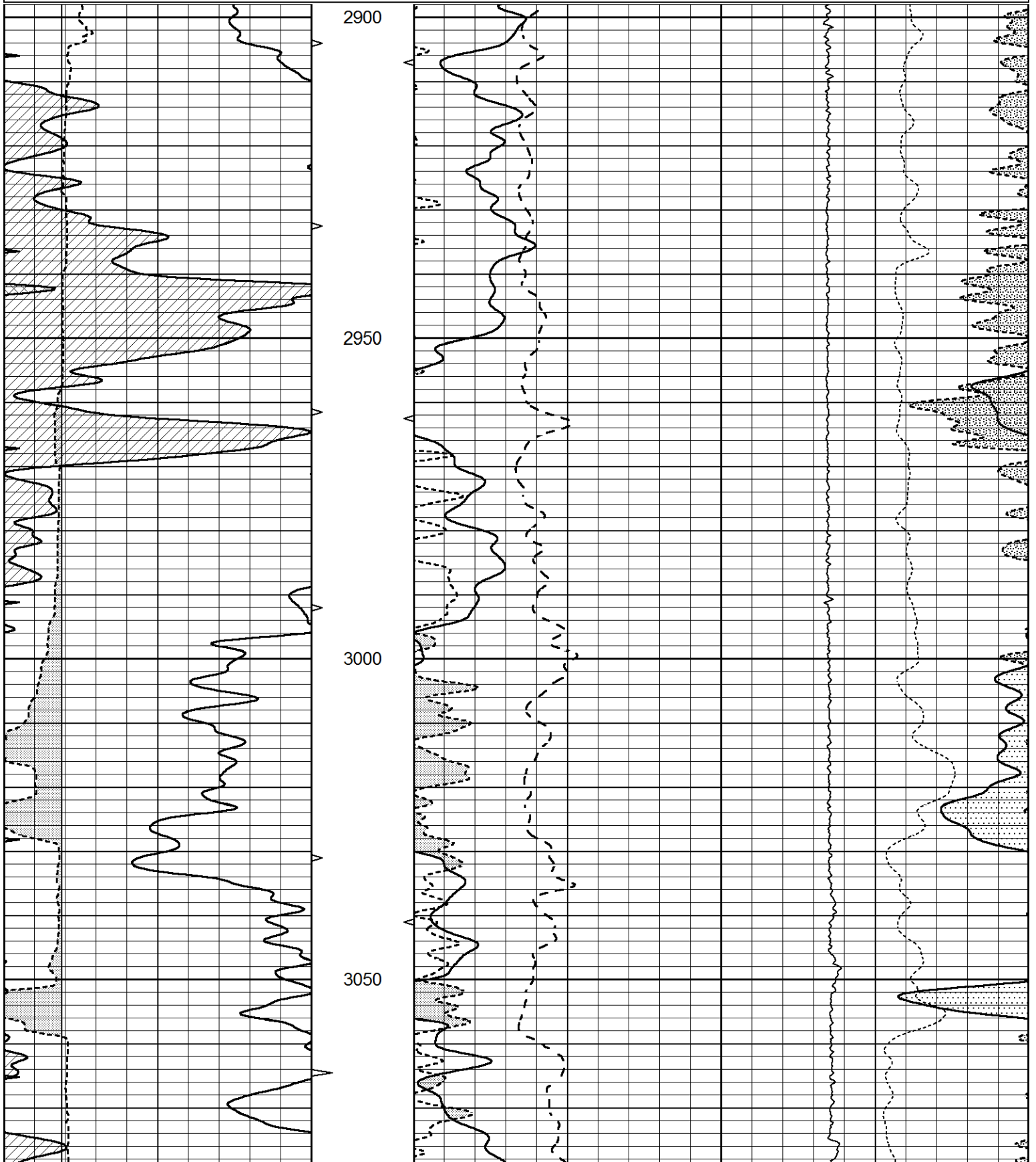
FROM ANTON, COLORADO GO 14 MILES EAST ON HIGHWAY 36, TURN LEFT, GO 9 MILES NORTH ON CR 'RR', TURN RIGHT, GO 2 MILES EAST ON CR 17, SOUTH INTO, FOLLOW LEASE ROAD

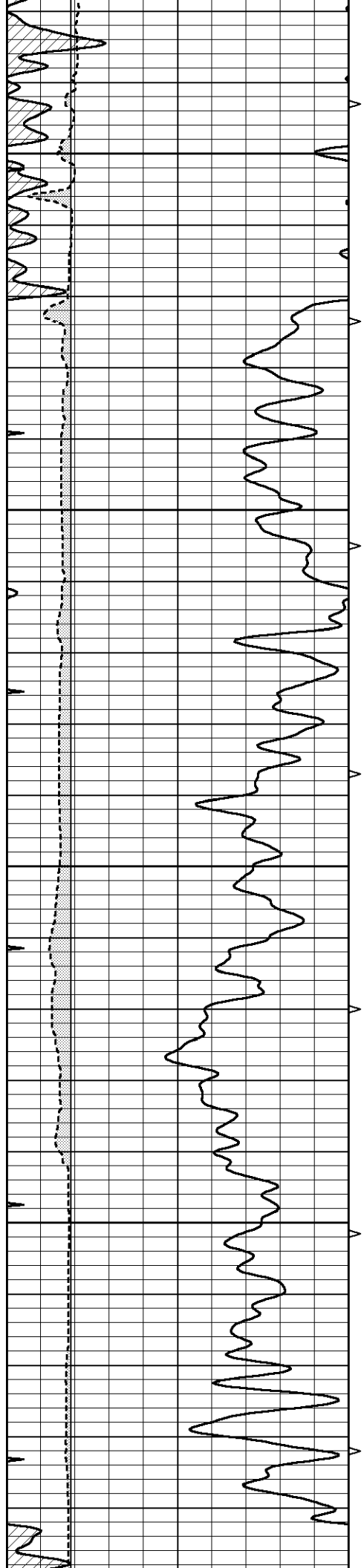


MAIN SECTION

Database File 9051pe.db
 Dataset Pathname pass3D
 Presentation Format _ldt_neu
 Dataset Creation Mon Sep 23 14:03:42 2024
 Charted by Depth in Feet scaled 1:240

0	GAMMA RAY (GAPI)	150	ABHV	30	COMPENSATED DENSITY (pu)		-10
6	CALIPER (in)	16	10 (ft3)	0	COMPENSATED NEUTRON (pu)		-10
0	MINMK	20	TBHV	0	PE	10	-0.25 CORRECTION (g/cc) 0.25
			0 (ft3)	10			0 LTEN (lb) 5000



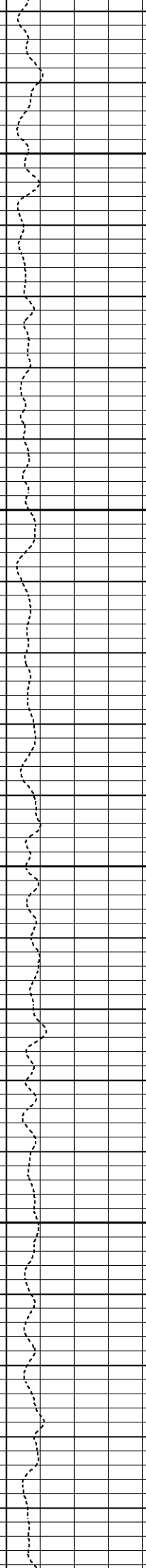
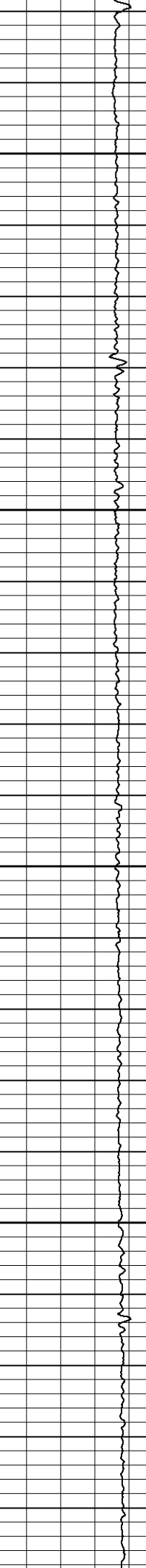
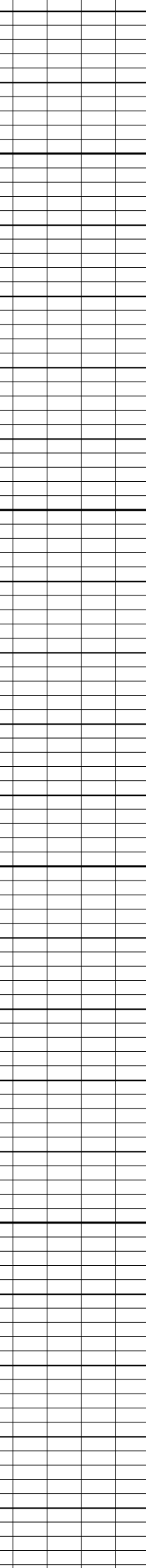
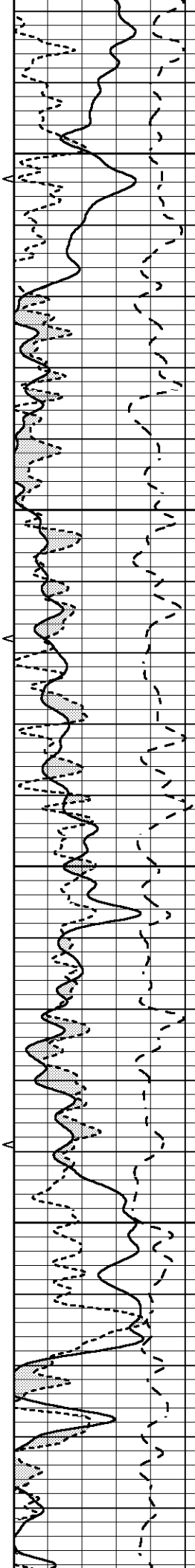


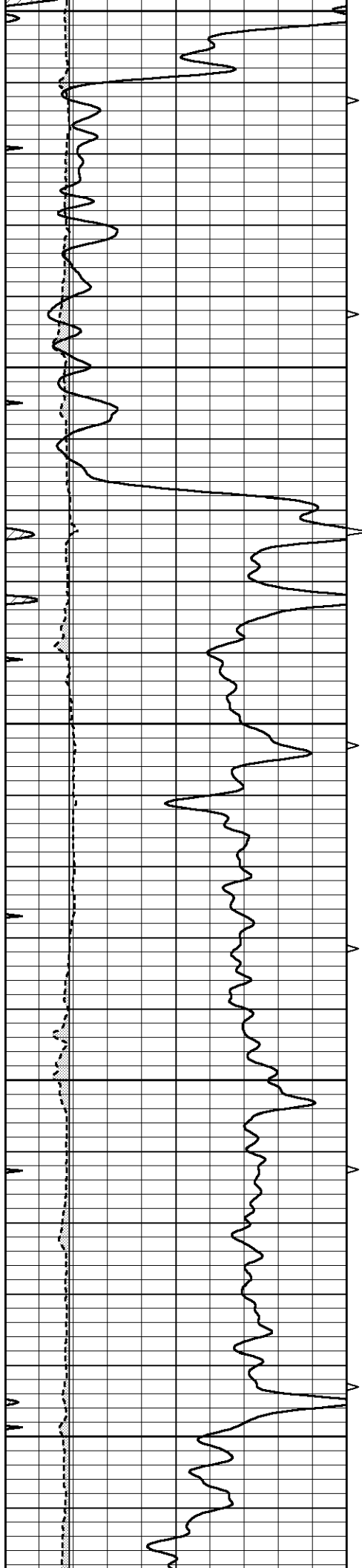
3100

3150

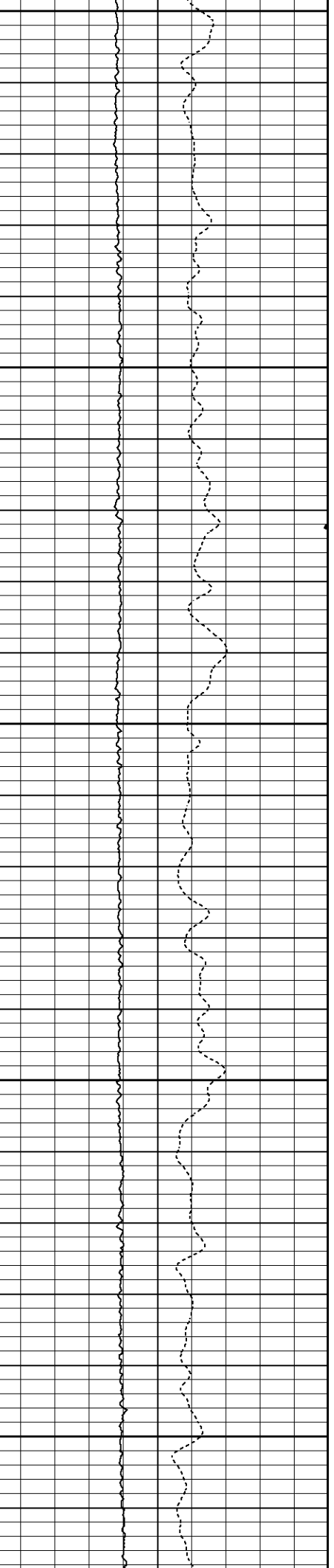
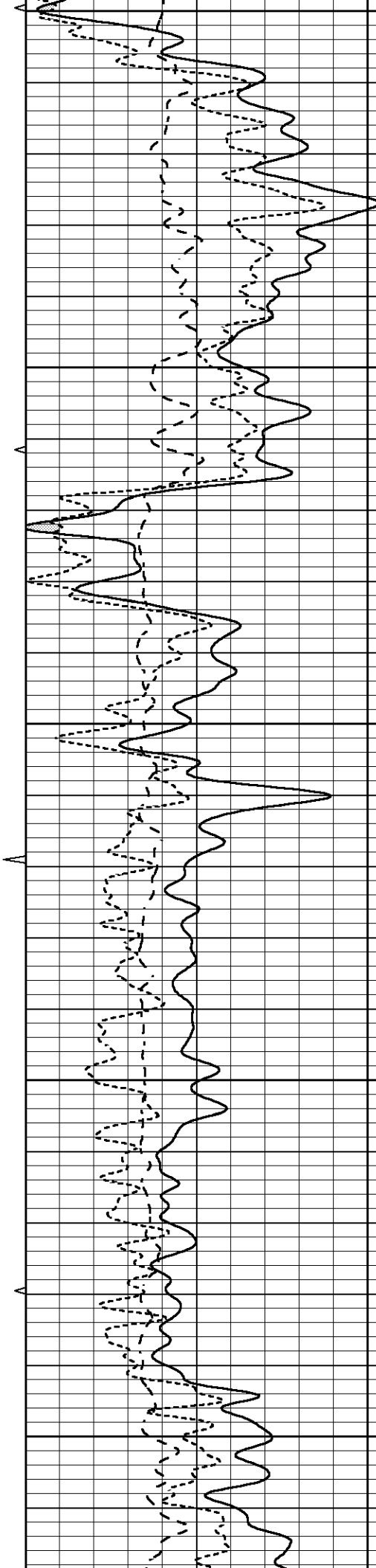
3200

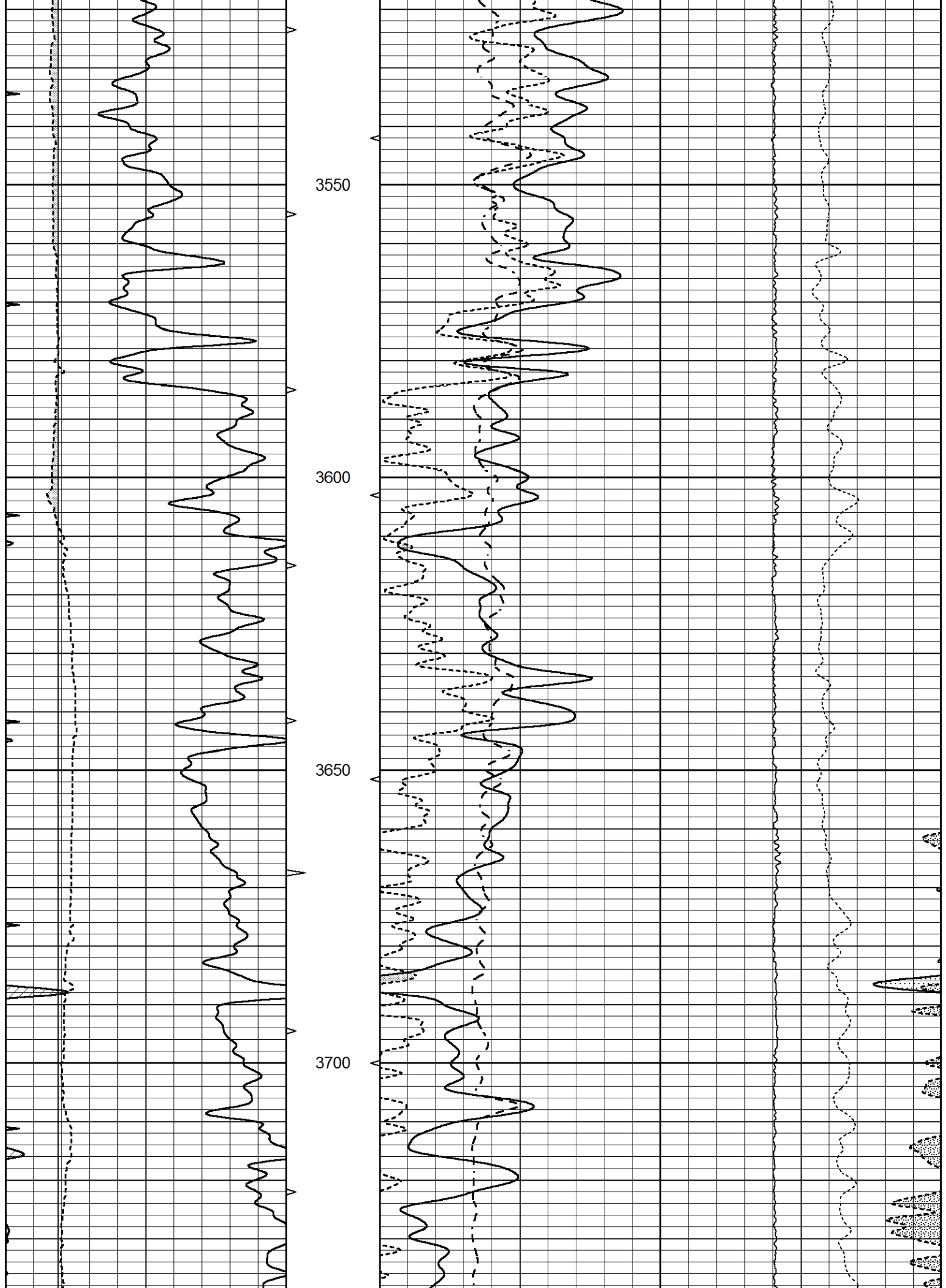
3250

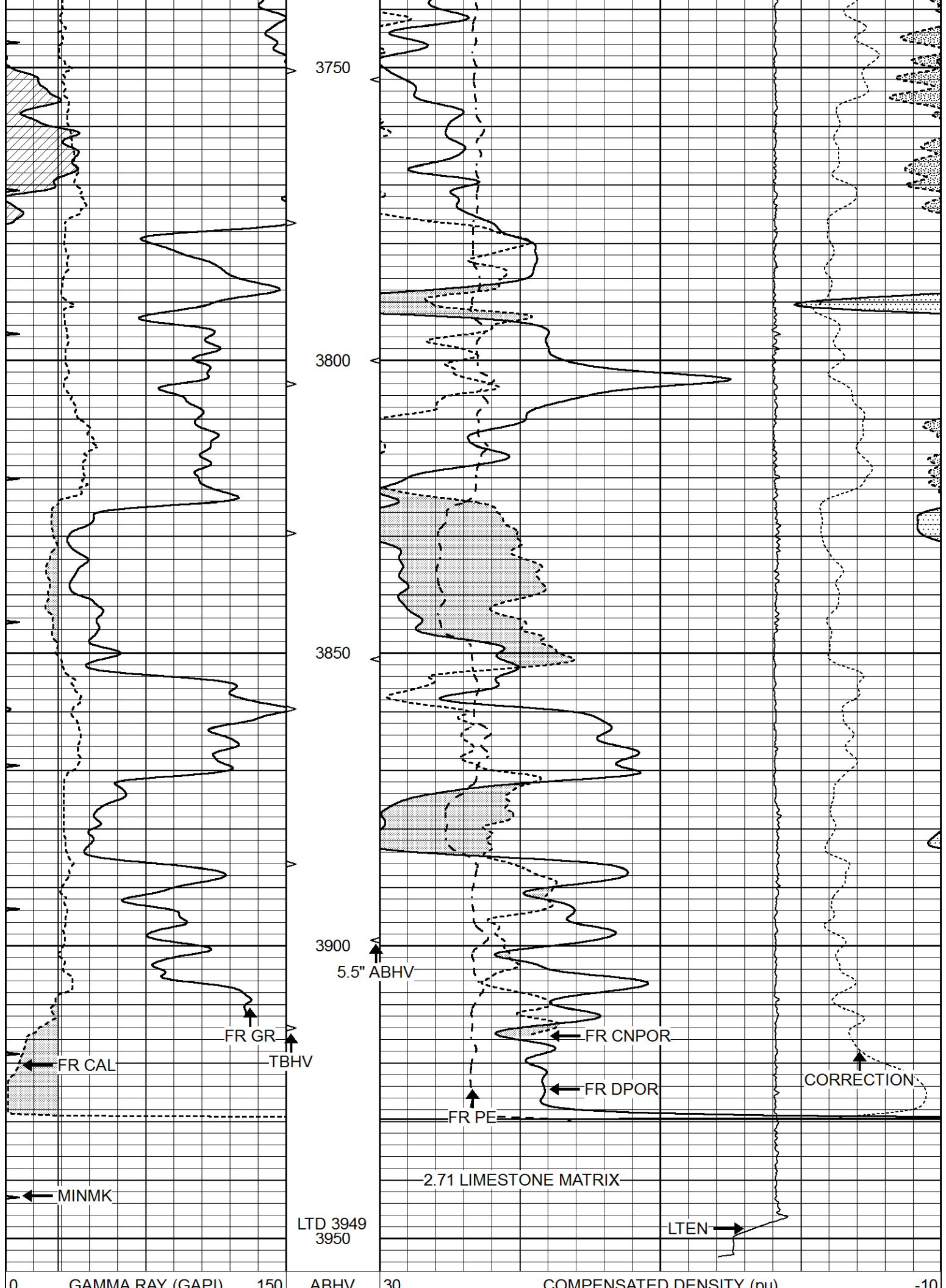




3300
3350
3400
3450
3500







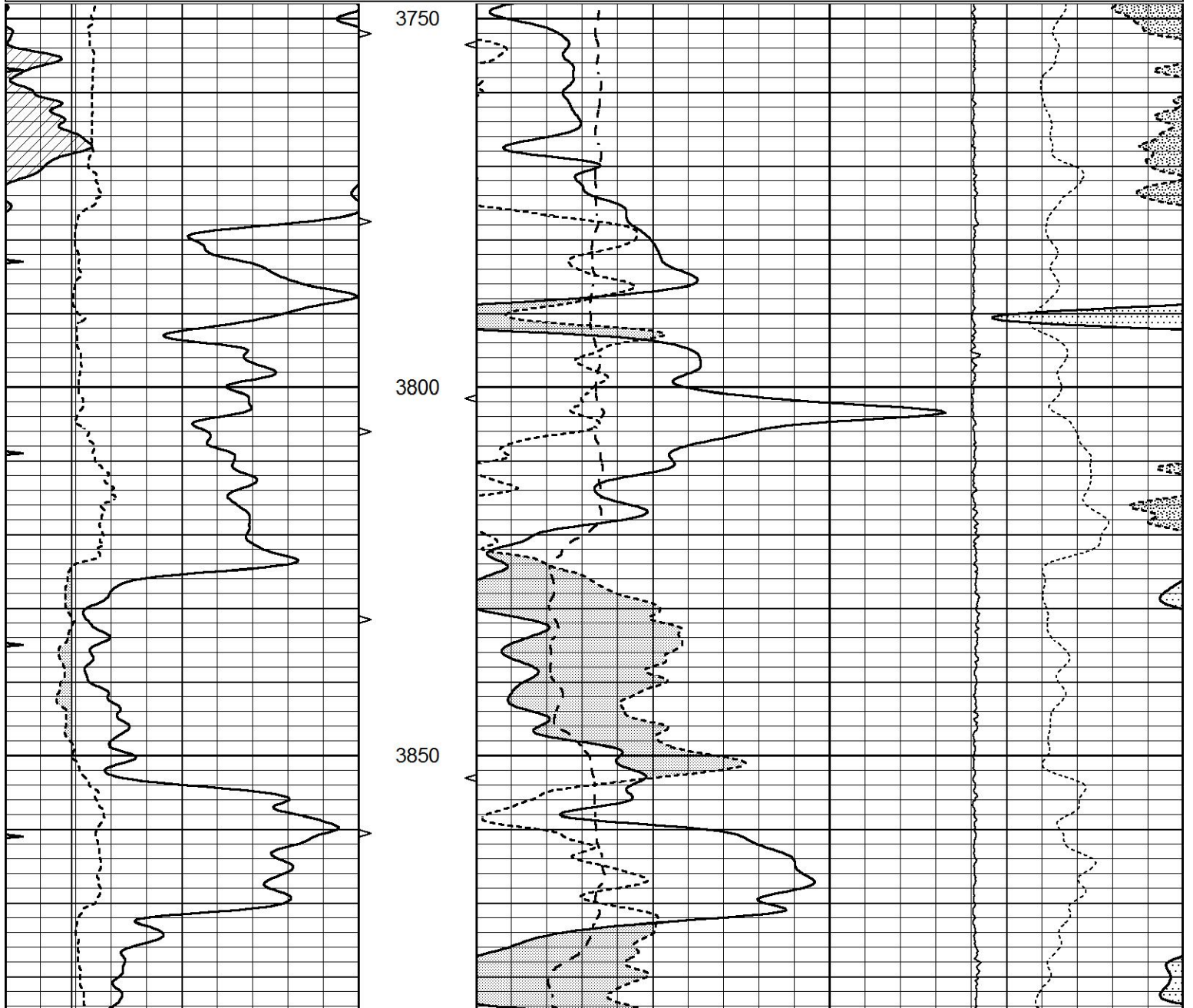
6	CALIPER (in)	16	10 (ft3)	0	30	COMPENSATED DENSITY (pu)	-10
0	MINMK	20	TBHV	0	PE	10	-0.25 CORRECTION (g/cc) 0.25
			0 (ft3)	10		0	LTEN (lb) 5000

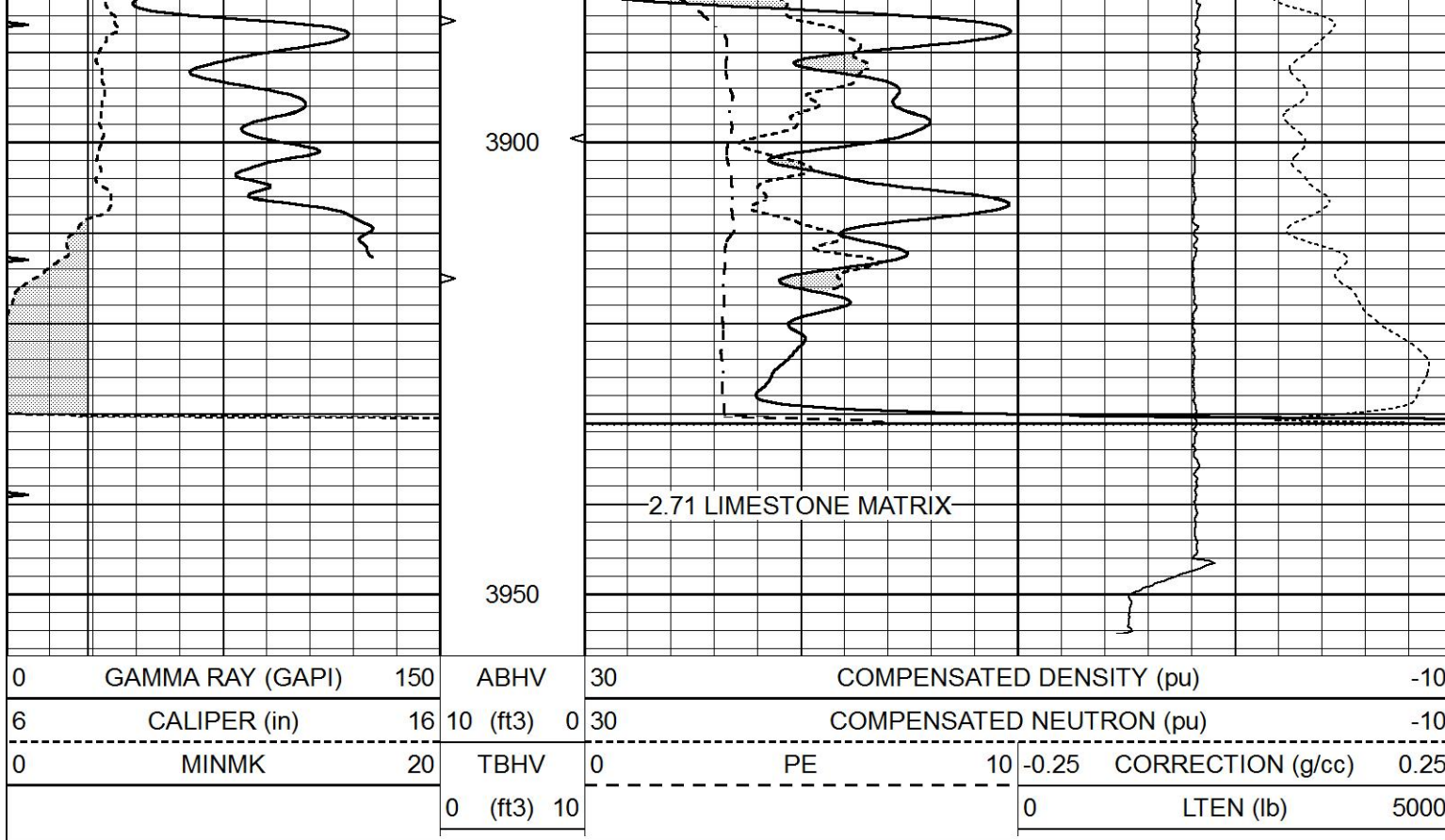


2.71 LIMESTONE REPEAT

Database File 9051pe.db
 Dataset Pathname pass2R
 Presentation Format _ldt_neu
 Dataset Creation Mon Sep 23 14:07:22 2024
 Charted by Depth in Feet scaled 1:240

0	GAMMA RAY (GAPI)	150	ABHV	30	COMPENSATED DENSITY (pu)	-10	
6	CALIPER (in)	16	10 (ft3)	0	30	COMPENSATED NEUTRON (pu)	-10
0	MINMK	20	TBHV	0	PE	10	-0.25 CORRECTION (g/cc) 0.25
			0 (ft3)	10		0	LTEN (lb) 5000

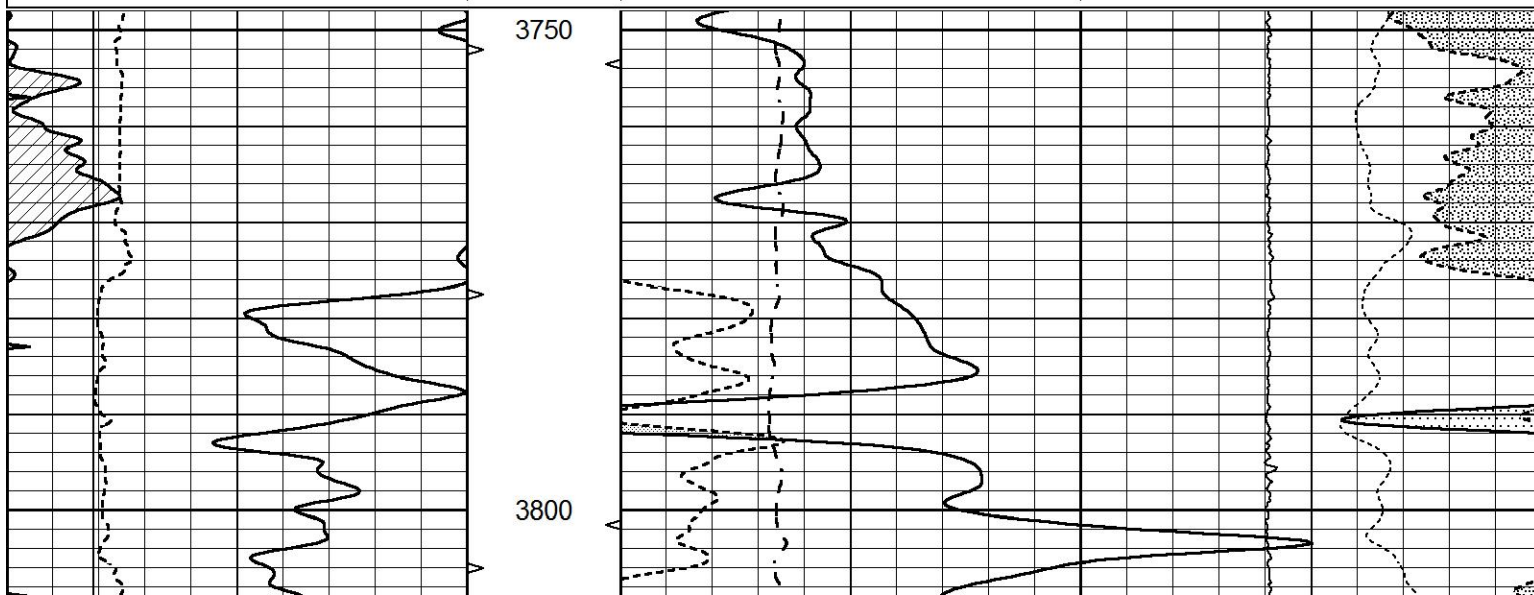


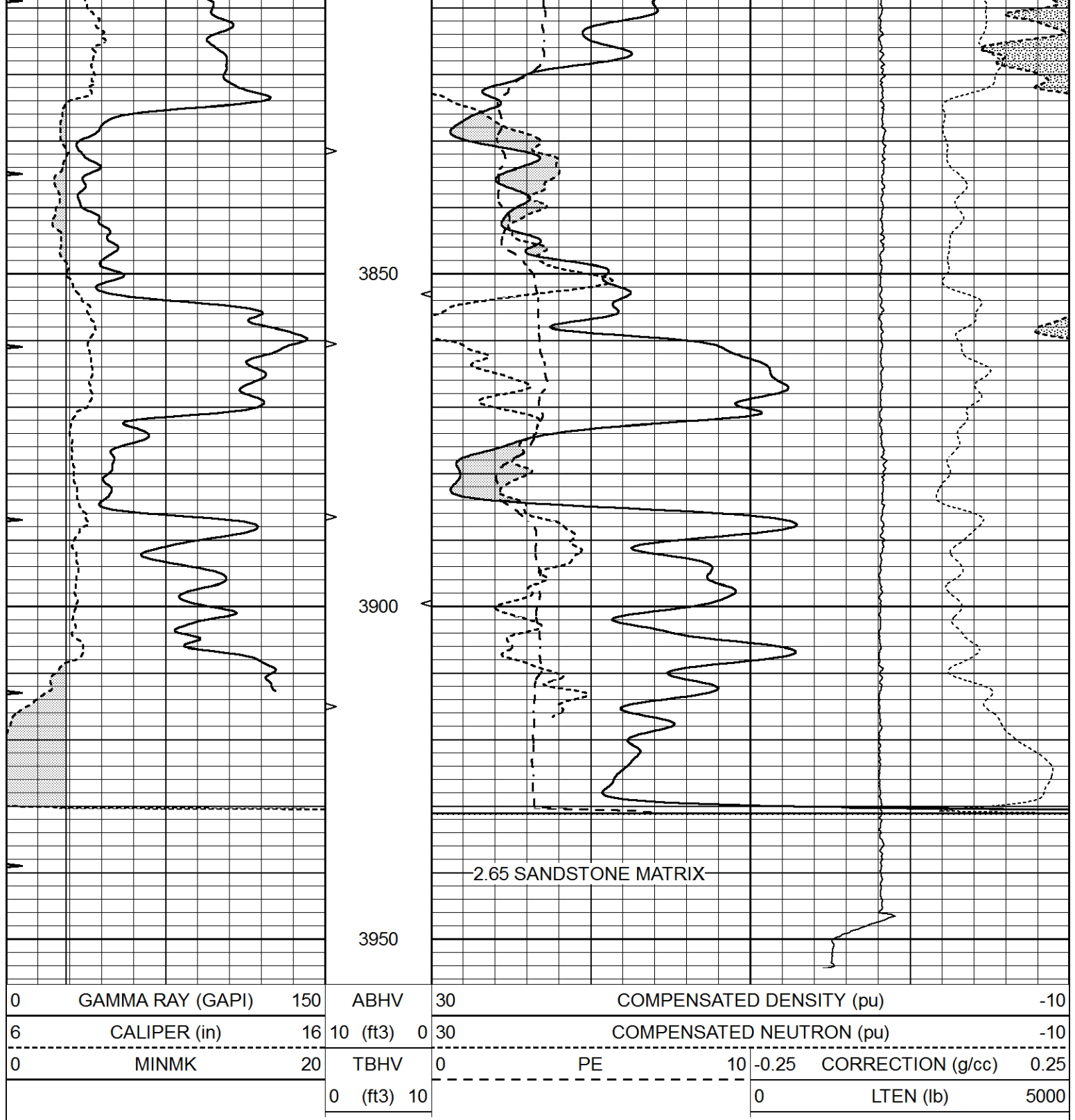


2.65 SANDSTONE REPEAT

Database File 9051pe.db
 Dataset Pathname pass2SS
 Presentation Format _ldt_neu
 Dataset Creation Mon Sep 23 14:02:31 2024
 Charted by Depth in Feet scaled 1:240

0	GAMMA RAY (GAPI)	150	ABHV	30	COMPENSATED DENSITY (pu)	-10			
6	CALIPER (in)	16	10 (ft3)	0	30	COMPENSATED NEUTRON (pu)	-10		
0	MINMK	20	TBHV	0	PE	10	-0.25	CORRECTION (g/cc)	0.25
			0 (ft3)	10			0	LTEN (lb)	5000





Calibration Report

Database File 9051pe.db
 Dataset Pathname pass3D
 Dataset Creation Mon Sep 23 14:03:42 2024

Dual Induction Calibration Report

Serial-Model: FW1410-56-Probe
 Surface Cal Performed: Tue Apr 30 11:10:17 2024
 Downhole Cal Performed: Tue Jul 25 12:15:37 2017
 After Survey Verification Performed: Tue Jul 25 12:15:38 2017

Surface Calibration

Readings

References

Results

Loop:	Air	Loop		Air	Loop		m	b
Deep	0.008	0.765	V	1.000	400.000	mmho/m	520.000	18.000
Medium	-0.056	0.761	V	1.000	464.000	mmho/m	540.000	185.000
Internal:	Zero	Cal		Zero	Cal		m	b
Deep	0.005	0.624	V	0.000	400.000	mmho/m	645.611	-3.034
Medium	0.012	0.721	V	0.000	464.000	mmho/m	653.591	-7.532

Downhole Calibration								
	Readings			References			Results	
	Zero	Cal		Zero	Cal		m'	b'
Deep	-0.647	301.329	mmho/m	-0.780	336.378	mmho/m	1.117	-0.058
Medium	38.256	411.013	mmho/m	39.046	441.706	mmho/m	1.080	-2.280
LL3		7.471	V		2500.000	Ohm-m		
		0.001	V		20.000	Ohm-m		
		-7.085	V		4000.000	mmho-m		

After Survey Verification								
	Readings			Targets			Results	
	Zero	Cal		Zero	Cal		m'	b'
Deep	0.000	0.000	mmho/m	-0.647	301.329	mmho/m	1.000	0.000
Medium	0.000	0.000	mmho/m	38.256	411.013	mmho/m	1.000	0.000
LL3		0.000	Ohm-m		1500.000	Ohm-m		
		0.000	Ohm-m		20.000	Ohm-m		
		0.000	mmho-m		3745.000	mmho-m		

Litho Density Calibration Report
Serial: 003 Model: PRB

Master Calibration		Performed Mon May 22 11:42:40 2023				
	Background	Magnesium	Aluminum	Aluminum+Fe		
Window 1	1512.3	7465.7	2749.0	2519.6	cps	
Window 2	1398.8	6705.7	2507.3	2313.8	cps	
Window 3	1289.2	5259.5	2124.1	2009.6	cps	
Window 4	351.1	351.6	351.8	353.2	cps	
Long Space	0.0	5306.9	1108.5	915.0	cps	
Short Space	3.3	2239.9	1441.2	1212.0	cps	
Rho		1.7100	2.5900	0.0000	g/cc	
Pe		2.0000	2.7500	5.7900		
Rib Angle	: 44.3	Rib Slope	: 0.975	Density/Spine Ratio	: 0.541	
Spine Angle	: 74.3	Spine Slope	: 3.551	Spine Intercept	: -18.8	

Before Survey Verification		Performed Wed Dec 31 18:00:00 1969				
	Background	Magnesium	Aluminum	Aluminum+Fe		
Window 1	0.0	0.0	0.0	0.0	cps	
Window 2	0.0	0.0	0.0	0.0	cps	
Window 3	0.0	0.0	0.0	0.0	cps	
Window 4	0.0	0.0	0.0	0.0	cps	
Long Space	0.0	0.0	0.0	0.0	cps	
Short Space	0.0	0.0	0.0	0.0	cps	
Measured Rho		0.0000	0.0000	0.0000	g/cc	
Measured Correction		0.0000	0.0000	0.0000	g/cc	
Measured Pe			0.0000	0.0000		

After Survey Verification Performed Wed Dec 31 18:00:00 1969

Window 1	0.0	0.0	0.0	0.0	cps
Window 2	0.0	0.0	0.0	0.0	cps
Window 3	0.0	0.0	0.0	0.0	cps
Window 4	0.0	0.0	0.0	0.0	cps
Long Space	0.0	0.0	0.0	0.0	cps
Short Space	0.0	0.0	0.0	0.0	cps
Measured Rho		0.0000	0.0000	0.0000	g/cc
Measured Correction		0.0000	0.0000	0.0000	g/cc
Measured Pe			0.0000	0.0000	

Compensated Neutron Calibration Report

Serial Number: 080621PMC
 Tool Model: NABORS

PRE-SURVEY VERIFICATION

Detector	Readings	Measured	Target
Short Space	cps		
Long Space	cps	pu	pu

POST-SURVEY VERIFICATION

Detector	Readings	Measured	Target
Short Space	cps		
Long Space	cps	pu	pu

Gamma Ray Calibration Report

Serial Number: 46001
 Tool Model: Probe1
 Performed: Thu Apr 20 09:55:57 2023

Calibrator Value: 1.0 GAPI

Background Reading: 0.0 cps
 Calibrator Reading: 1.0 cps

Sensitivity: 0.4300 GAPI/cps