

**TABLE 1**  
**SUMMARY OF VOLATILE ORGANIC SOIL CHEMISTRY DATA**  
**NOBLE 100322**  
**WELLS RANCH BB03 ECONODE, WELD COUNTY, COLORADO**  
**REM #**

Sample ID	Sample Date	Depth (ft)	Benzene (mg/kg)	Toluene (mg/kg)	Ethyl-Benzene (mg/kg)	Xylenes (mg/kg)	1,2,4-Trimethyl-Benzene (mg/kg)	1,3,5-Trimethyl-Benzene (mg/kg)	Naphthalene (mg/kg)	TPH (mg/kg)	TPH GRO (mg/kg)	TPH DRO (mg/kg)	TPH ORO (mg/kg)
ECMC Table 915-1 Limits (Residential SSL)			1.2	490	5.8	58	30	27	2	500	500**		
ECMC Table 915-1 Limits (Protection of Groundwater SSL)			0.0026	0.69	0.78	9.9	0.0081	0.0087	0.0038	500	500**		
Waste Char	7/18/2024	0.2	<b>0.012</b>	0.28	0.041	<b>21</b>	<b>8.5</b>	<b>0.80</b>	<b>0.29</b>	<b>1325</b>	<b>600</b>	<b>640</b>	<b>85</b>
SS-01	7/31/2024	5	<0.00200	<0.00200	<0.00200	0.00288	<0.00200	<b>0.04</b>	<0.002	<125.2	9.07	440	<100
SS-02	7/31/2024	3	<0.00200	<0.00200	<0.00200	<0.00200	<0.00200	<0.00200	<0.002	<125.2	<0.200	<25.0	<100
SS-03	7/31/2024	3	<0.00200	<0.00200	<0.00200	<0.00200	<0.00200	<0.00200	<0.002	<125.2	<0.200	<25.0	<100
SS-04	7/31/2024	3	<0.00200	<0.00200	<0.00200	<0.00200	<0.00200	<0.00200	<0.002	<125.2	<0.200	<25.0	<100
SS-05	7/31/2024	3	<0.00200	<0.00200	<0.00200	<0.00200	<0.00200	<0.00200	<0.002	<125.2	<0.200	<25.0	<100
SS-06	7/31/2024	3	<0.00200	<0.00200	<0.00200	<0.00200	<0.00200	<0.00200	<0.002	<125.2	<0.200	<25.0	<100
FS-01	7/31/2024	8	<0.00200	<0.00200	<0.00200	0.00662	<b>0.00898</b>	<b>0.0145</b>	<0.002	<125.2	5.53	29.8	<100
FS-02	7/31/2024	4.5	<0.00200	<0.00200	<0.00200	<0.00200	<0.00200	0.01	<0.002	<125.2	0.416	<25.0	<100
FS-03	7/31/2024	5	<0.00200	<0.00200	<0.00200	0.0145	<0.00200	<b>0.0599</b>	<0.002	<125.2	14.1	225	<100
FS-04	7/31/2024	5	<0.00200	<0.00200	<0.00200	<0.00200	<0.00200	<0.00200	<0.002	<125.2	<0.200	<25.0	<100
FS-05 6 Ft	8/19/2024	6	<0.0020	<0.0050	<0.0050	<0.010	<0.0050	<0.0050	<0.0038	<100.5	<0.50	<50	<50
FS-06 6 Ft	8/19/2024	6	<0.0020	0.029	<0.0050	<0.010	<b>4.0</b>	<b>3.2</b>	<b>0.22</b>	<b>7130</b>	<b>2300</b>	<b>4200</b>	<b>630</b>
SS-07 5 Ft	8/19/2024	5	<0.0020	<0.0050	<0.0050	<0.010	<0.0050	<0.0050	<0.0038	30	30	<50	<50
SS-08 5 Ft	8/19/2024	5	<0.0020	<0.0050	<0.0050	<0.010	<0.0050	<0.0050	<0.0038	<100.5	<0.50	<50	<50

1. Bold values exceed the ECMC Table 915-1 limit(s)
  2. Red & blue highlighted soil analytical values indicate an exceedance of the referenced soil screening level (SSL)
  3. \* Indicates laboratory minimum detection limit in excess of SSL
  4. \*\* Summation of GRO+DRO+ORO must be less than 500 mg/kg
- NA - Not analyzed

= Source material characterization sample, excavated and transported off site for disposal.

= Material excavated and transported off site for disposal.

TABLE 2  
SUMMARY OF POLYCYCLIC AROMATIC HYDROCARBON SOIL CHEMISTRY DATA  
NOBLE 100322  
WELLS RANCH BB03 ECONODE, WELD COUNTY, COLORADO  
REM #

Sample ID	Sample Date	Depth (ft)	Acenaphthene (mg/kg)	Anthracene (mg/kg)	Benzo (a) Anthracene (mg/kg)	Benzo (a) Pyrene (mg/kg)	Benzo (b) Fluoranthene (mg/kg)	Benzo (k) Fluoranthene (mg/kg)	Chrysene (mg/kg)	Dibenzo (a,h) Anthracene (mg/kg)	Fluoranthene (mg/kg)	Fluorene (mg/kg)	Indeno (1,2,3-cd) Pyrene (mg/kg)	Pyrene (mg/kg)	1-Methyl - Naphthalene (mg/kg)	2-Methyl- Naphthalene (mg/kg)
ECMC Table 915-1 Limits (Residential SSL)			360	1800	1.1	0.11	1.1	11	110	0.11	240	240	1.1	180	18	24
ECMC Table 915-1 Limits (Protection of Groundwater SSL)			0.55	5.8	0.011	0.24	0.3	2.9	9	0.096	8.9	0.54	0.98	1.3	0.006	0.019
Waste Char	7/18/2024	0.2	<0.00500	<0.00500	<0.00500	<0.00500	<0.00500	<0.00500	<0.00500	<0.00500	0.00829	0.0742	<0.00500	<0.00500	<b>0.650</b>	<b>0.898</b>
SS-01	7/31/2024	5	<0.020	0.022	<b>0.019</b>	<0.020	<0.020	<0.020	0.033	<0.020	0.035	0.115	<0.020	0.040	<b>0.246</b>	<b>0.084</b>
SS-02	7/31/2024	3	<0.020	<0.020	<0.005	<0.020	<0.020	<0.020	<0.020	<0.020	<0.020	<0.020	<0.020	<0.020	<0.002	<0.002
SS-03	7/31/2024	3	<0.020	<0.020	<0.005	<0.020	<0.020	<0.020	<0.020	<0.020	<0.020	<0.020	<0.020	<0.020	<0.002	<0.002
SS-04	7/31/2024	3	<0.020	<0.020	<0.005	<0.020	<0.020	<0.020	<0.020	<0.020	<0.020	<0.020	<0.020	<0.020	<0.002	<0.002
SS-05	7/31/2024	3	<0.020	<0.020	<0.005	<0.020	<0.020	<0.020	<0.020	<0.020	<0.020	<0.020	<0.020	<0.020	0.003	0.004
SS-06	7/31/2024	3	<0.020	<0.020	<0.005	<0.020	<0.020	<0.020	<0.020	<0.020	<0.020	<0.020	<0.020	<0.020	<0.002	<0.002
FS-01	7/31/2024	8	<0.020	<0.020	<0.005	<0.020	<0.020	<0.020	<0.020	<0.020	<0.020	<0.020	<0.020	<0.020	<b>0.028</b>	<b>0.023</b>
FS-02	7/31/2024	4.5	<0.020	<0.020	<0.005	<0.020	<0.020	<0.020	<0.020	<0.020	<0.020	0.076	<0.020	<0.020	<b>0.169</b>	<b>0.031</b>
FS-03	7/31/2024	5	<0.020	<0.020	<0.005	<0.020	<0.020	<0.020	<0.020	<0.020	<0.020	0.061	<0.020	<0.020	<b>0.279</b>	<b>0.034</b>
FS-04	7/31/2024	5	<0.020	<0.020	<0.005	<0.020	<0.020	<0.020	<0.020	<0.020	<0.020	<0.020	<0.020	<0.020	<0.002	<0.002
FS-05 6 Ft	8/19/2024	6	<0.00500	<0.00500	<0.00500	<0.00500	<0.00500	<0.00500	<0.00500	<0.00500	<0.00500	<0.00500	<0.00500	<0.00500	<0.00500	<0.00500
FS-06 6 Ft	8/19/2024	6	0.258	<0.0500	<0.0500	<0.0500	<0.0500	<0.0500	0.0797	<0.0500	<0.0500	<b>0.786</b>	<0.0500	0.0610	<b>7.00</b>	<b>8.47</b>
SS-07 5 Ft	8/19/2024	5	<0.00500	<0.00500	<0.00500	<0.00500	<0.00500	<0.00500	<0.00500	<0.00500	<0.00500	<0.00500	<0.00500	<0.00500	<0.00500	<0.00500
SS-08 5 Ft	8/19/2024	5	<0.00500	<0.00500	<0.00500	<0.00500	<0.00500	<0.00500	<0.00500	<0.00500	<0.00500	<0.00500	<0.00500	<0.00500	<0.00500	<0.00500

1. Bold values exceed the ECMC Table 915-1 limit(s)
2. Red & blue highlighted soil analytical values indicate an exceedance of the referenced soil screening level (SSL)
3. \* Indicates laboratory minimum detection limit in excess of SSL

NA - Not analyzed

= Source material characterization sample, excavated and transported off site for disposal.  
 = Material excavated and transported off site for disposal.

**TABLE 3**  
**SUMMARY OF SOIL SUITABILITY FOR RECLAMATION**  
**NOBLE 100322**  
**WELLS RANCH BB03 ECONODE, WELD COUNTY, COLORADO**  
**REM #**

Sample ID	Sample Date	Depth (ft)	pH (Standard Units)	EC (mmhos/cm)	SAR (Standard Units)	Boron (mg/L)
ECMC Table 915-1 Soil Suitability Limits			6 - 8.3	<4	<6	2
Waste Char	7/18/2024	0.2	8.06	0.342	0.622	<2.00
SS-01	7/31/2024	5	<b>8.43</b>	1.06	2.86	0.221
SS-02	7/31/2024	3	7.9	0.124	0.397	<0.100
SS-03	7/31/2024	3	7.61	0.288	0.518	<0.0993
SS-04	7/31/2024	3	<b>8.34</b>	0.466	1	<0.100
SS-05	7/31/2024	3	8.29	1.7	2.21	0.433
SS-06	7/31/2024	3	8.27	0.123	0.156	<0.0981
FS-01	7/31/2024	8	7.57	0.121	0.362	<0.101
FS-02	7/31/2024	4.5	<b>8.49</b>	0.699	2.2	0.153
FS-03	7/31/2024	5	<b>8.51</b>	0.911	2.75	0.176
FS-04	7/31/2024	5	<b>8.39</b>	0.763	1.99	0.175
FS-05 6 Ft	8/19/2024	6	<b>8.91</b>	0.184	1.5	<2.00
FS-06 6 Ft	8/19/2024	6	<b>9.04</b>	0.202	1.59	<2.00
SS-07 5 Ft	8/19/2024	5	7.88	0.312	0.251	<2.00
SS-08 5 Ft	8/19/2024	5	7.61	0.579	0.342	<2.00
Maximum Root Background Concentration (0 - 3 ft)						
Average Root Background Concentration (0 - 3 ft)						
Maximum Background Concentration						
Average Background Concentration						

1. Bold faced values exceed the ECMC Table 915-1 limit(s)
  2. Blue highlighted soil analytical values indicate a regulatory exceedance
- NA - Not analyzed

TABLE 4  
SUMMARY OF METALS IN SOIL CHEMISTRY DATA  
NOBLE 100322  
WELLS RANCH BB03 ECONODE, WELD COUNTY, COLORADO  
REM #

Sample ID	Sample Date	Depth (ft)	Arsenic (mg/kg)	Barium (mg/kg)	Cadmium (mg/kg)	Chromium (VI) (mg/kg)	Copper (mg/kg)	Lead (mg/kg)	Nickel (mg/kg)	Selenium (mg/kg)	Silver (mg/kg)	Zinc (mg/kg)
ECMC Table 915-1 Limits (Residential SSL)			0.68	15000	71	0.3	3100	400	1500	390	390	23000
ECMC Table 915-1 Limits (Protection of Groundwater SSL)			0.29	82	0.38	0.00067	46	14	26	0.26	0.8	370
Waste Char	7/18/2024	0.2	<b>2.54</b>	65.5	<0.200	<0.30	2.06	4.55	2.68	<0.260	<0.0200	12.7
SS-01	7/31/2024	5	<b>2.69</b>	<b>91.4</b>	0.0854	<0.179	<8.38	5.83	4.81	<0.218	<0.0838	<31.0
SS-02	7/31/2024	3	<b>2.14</b>	22.9	0.093	<0.139	<8.69	3.89	2.35	<0.226	<0.0869	<32.2
SS-03	7/31/2024	3	<b>1.83</b>	41.9	<0.0935	<0.156	<9.35	3.3	2.7	<0.243	<0.0935	<34.6
SS-04	7/31/2024	3	<b>2.35</b>	43	<0.0900	<0.166	<9.00	3.51	3.13	<0.234	<0.0900	<33.3
SS-05	7/31/2024	3	<b>2.25</b>	66.4	0.113	<0.156	<9.22	6.45	5.34	<0.240	<0.0922	<34.1
SS-06	7/31/2024	3	<b>2.47</b>	51.6	<0.0855	<0.149	<8.55	4.41	3.7	<0.222	<0.0855	<31.7
FS-01	7/31/2024	8	<b>2.29</b>	37.5	<0.0852	<0.137	<8.52	2.94	2.47	<0.221	<0.0852	<31.5
FS-02	7/31/2024	4.5	<b>2.37</b>	69.1	<0.0954	<0.140	<9.54	4.65	4.68	<0.248	<0.0954	<35.3
FS-03	7/31/2024	5	<b>2.25</b>	48.6	<0.0984	<0.123	<9.84	4.04	3.67	<0.256	<0.0984	<36.4
FS-04	7/31/2024	5	<b>2.57</b>	50.7	<0.0948	<0.135	<9.48	3.52	3.3	<0.246	<0.0948	<35.1
FS-05 6 Ft	8/19/2024	6	<b>2.15</b>	35.5	<0.200	<0.30	1.54	2.45	1.78	<0.260	<0.0200	7.43
FS-06 6 Ft	8/19/2024	6	<b>1.95</b>	33.1	<0.180	<0.30	1.52	2.75	1.92	<0.234	<0.0180	7.59
SS-07 5 Ft	8/19/2024	5	<b>2.16</b>	26.8	<0.200	<0.30	1.48	2.54	1.82	<0.260	<0.0200	7.50
SS-08 5 Ft	8/19/2024	5	<b>1.70</b>	40.3	<0.200	<0.30	1.50	2.43	1.81	<0.260	<0.0200	6.99
Maximum Root Zone Background Concentration (0 - 3 ft)												
125% Average Root Zone Background Concentration (0 - 3 ft)												
Maximum Background Concentration												
125% Average Background Concentration												

1. Bold values exceed the ECMC Table 915-1 limit(s)

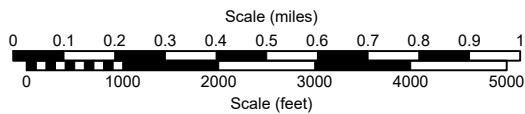
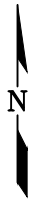
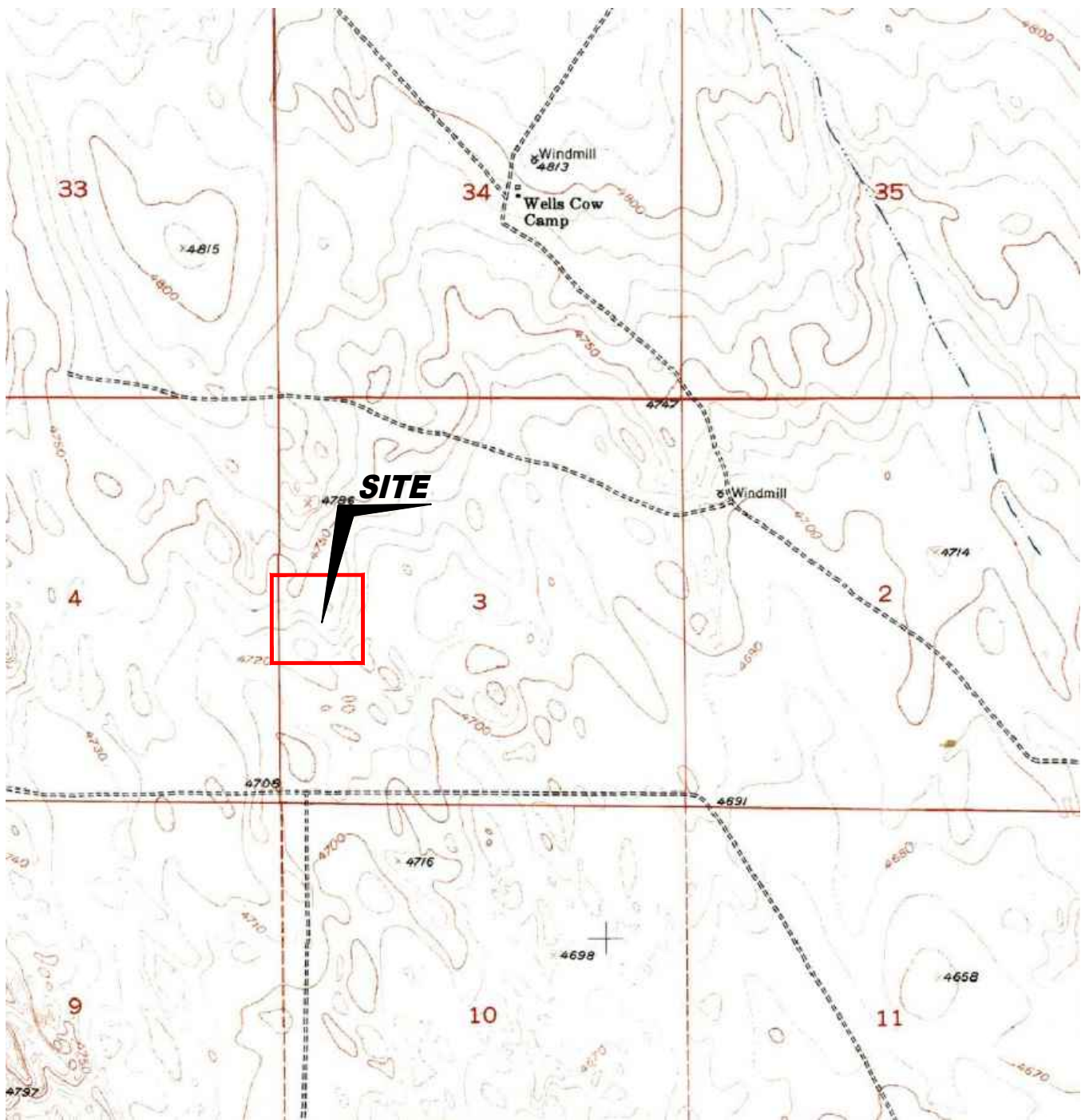
2. Red & blue highlighted soil analytical values indicate an exceedance of the referenced soil screening level (SSL)

\* Indicates laboratory minimum detection limit in excess of SSL

NA - Not analyzed

= Source material characterization sample, excavated and transported off site for disposal.

= Material excavated and transported off site for disposal.



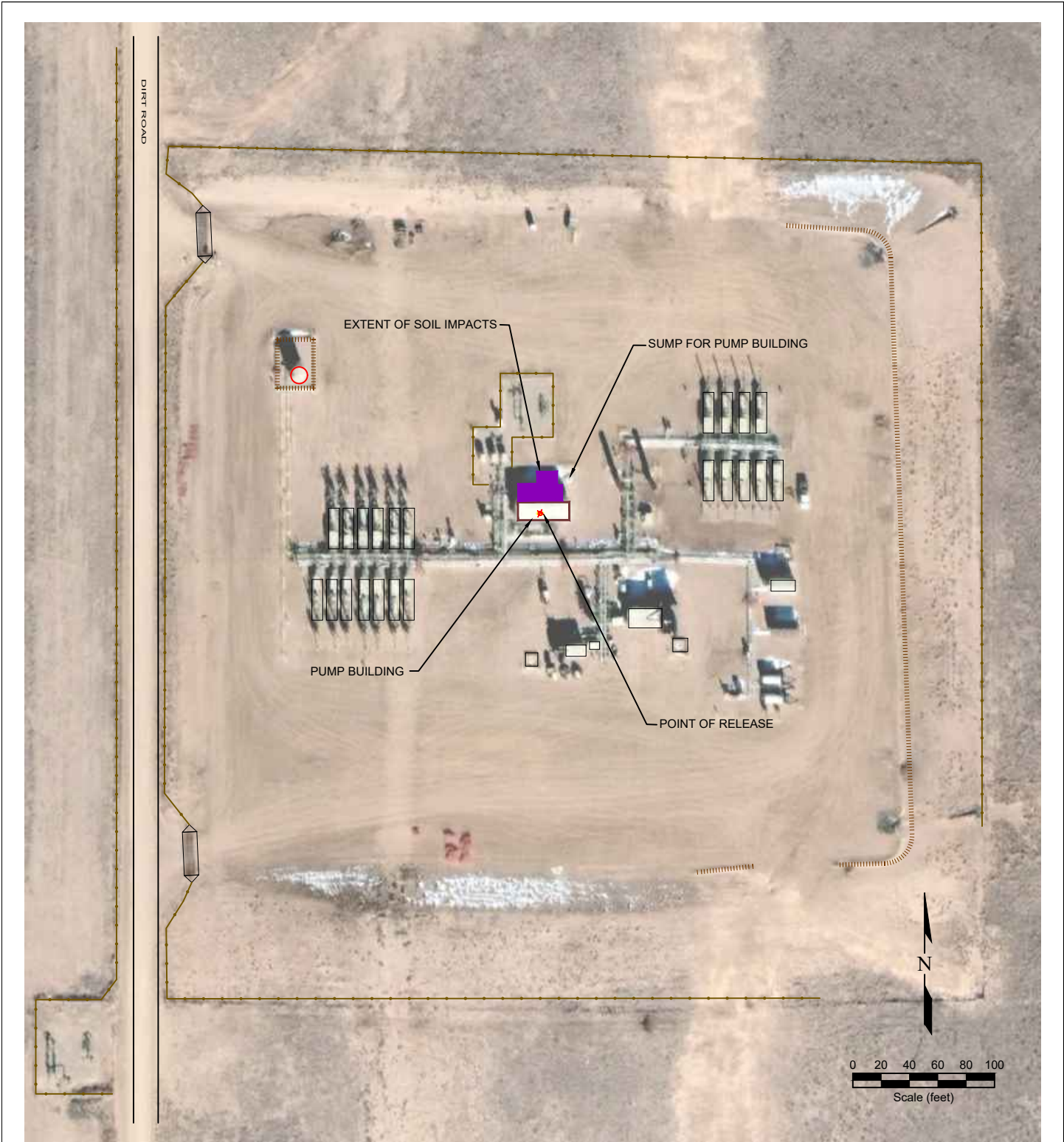
USGS 7.5 MINUTE SERIES (TOPOGRAPHIC)

Figure 1  
SITE LOCATION MAP

**Noble ~ Wells Ranch BB03 Econode**  
 SWNW Sec. 3, T5N, R63W, 6th PM  
 Weld County, Colorado  
 40.429001°, -104.429881°

Project No. <b>CO24-148</b>	API #	Initial Spill/Release Report Doc# <b>403861594</b>
Date <b>9/25/24</b>	Facility ID <b>448147</b>	Filename <b>24148T</b>





**LEGEND**

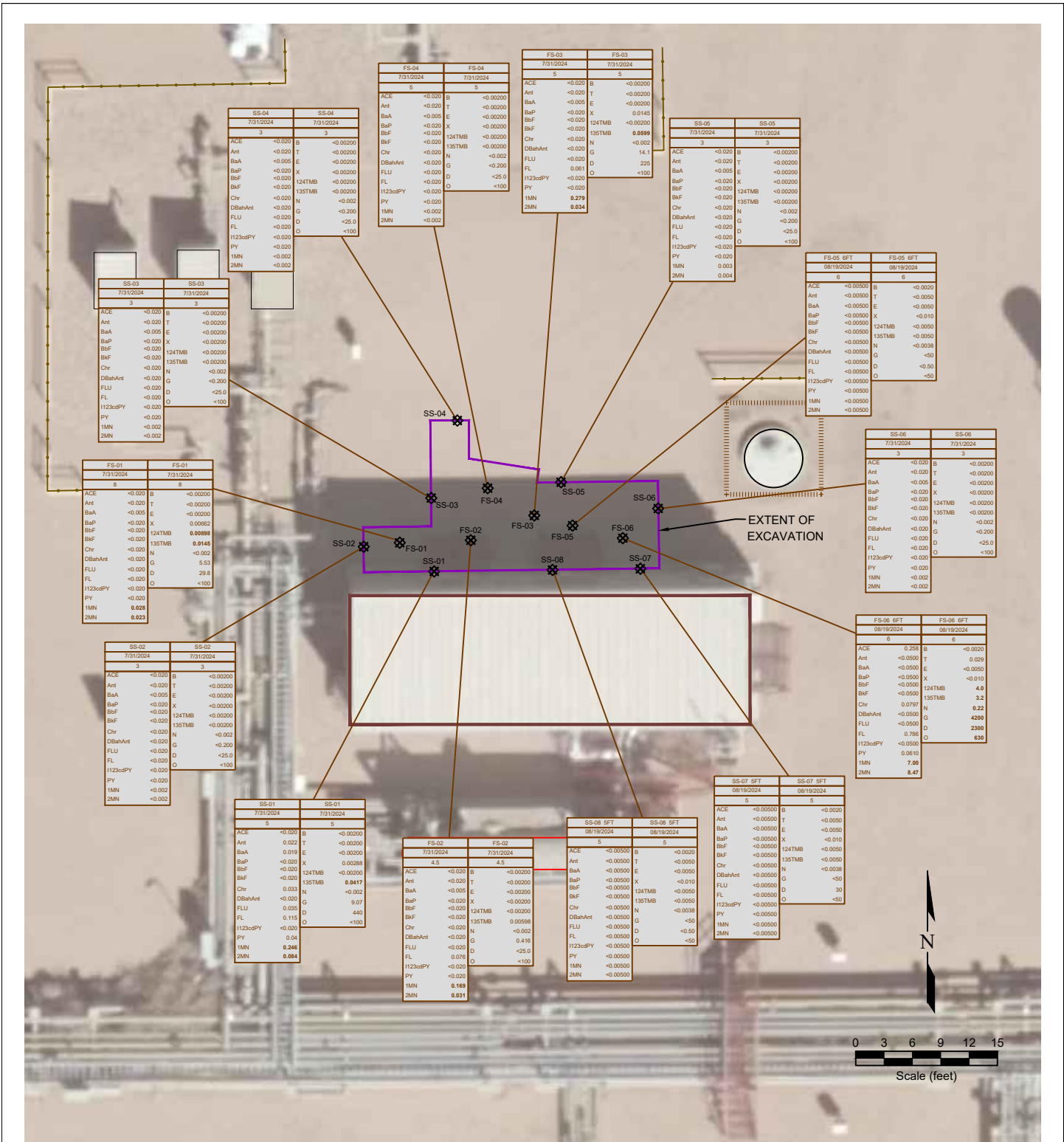
- ★ POINT OF RELEASE
- ABOVE GROUND STORAGE TANK
- ▭ IMPACTED AREA
- ▭ FORMER FACILITY
- ▭ BUILDING
- ▭ BUILDING
- EXTENT OF EXCAVATION
- FENCE LINE
- ⋯ CONTAINMENT BERM
- CONTAINMENT WALL

**Figure 2  
SITE MAP**

**Noble ~ Wells Ranch BB03 Econode**  
 SWNW Sec. 3, T5N, R63W, 6th PM  
 Weld County, Colorado  
 40.429001°, -104.429881°

Project No. <b>CO24-148</b>	API #	Initial Spill/Release Report Doc# <b>403861594</b>
Date <b>9/25/24</b>	Facility ID <b>448147</b>	Filename <b>24148Q</b>





**LEGEND**

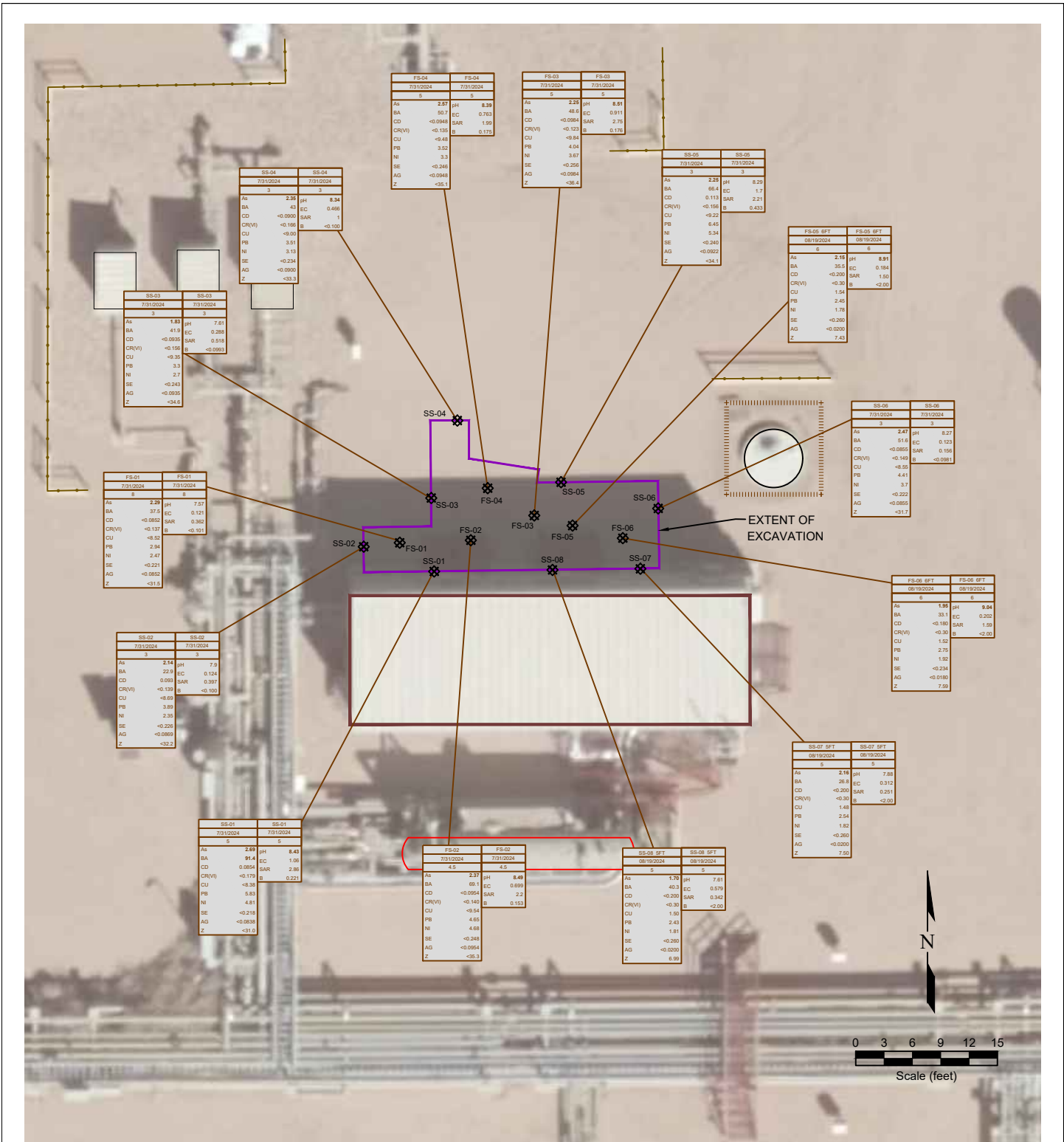
- ★ POINT OF RELEASE
- ⊙ ABOVE GROUND STORAGE TANK
- ◻ FORMER FACILITY
- EXTENT OF EXCAVATION
- FENCE LINE
- ▤ CONTAINMENT BERM
- CONTAINMENT WALL

SAMPLE ID	DEPTH	DATE	DATE SAMPLED	SAMPLE ID	DEPTH	DATE	DATE SAMPLED
ACE	<0.0020			ACE	<0.0020		
Ant	<0.0050			Ant	<0.0050		
BaA	<0.0050			BaA	<0.0050		
BaP	<0.0050			BaP	<0.0050		
BbF	<0.0050			BbF	<0.0050		
BkF	<0.0050			BkF	<0.0050		
Chr	<0.0050			Chr	<0.0050		
DBahAnt	<0.0050			DBahAnt	<0.0050		
FLU	<0.0050			FLU	<0.0050		
FL	<0.0050			FL	<0.0050		
H123cdPY	<0.0050			H123cdPY	<0.0050		
PY	<0.0050			PY	<0.0050		
MN	<0.0050			MN	<0.0050		
ZMN	<0.0050			ZMN	<0.0050		

**Figure 3**  
**ORGANIC SOIL CHEMISTRY MAP**

**Noble ~ Wells Ranch BB03 Econode**  
 SWNW Sec. 3, T5N, R63W, 6th PM  
 Weld County, Colorado  
 40.429001°, -104.429881°

Project No.	API #	Initial Spill/Release Report Doc#
CO24-148	448147	403861594
Date	Facility ID	Filename
9/25/24	448147	24148Q1



**LEGEND**

- POINT OF RELEASE
- SOIL SAMPLE LOCATION
- ABOVE GROUND STORAGE TANK
- FORMER FACILITY
- BUILDING
- BUILDING
- EXTENT OF EXCAVATION
- FENCE LINE
- CONTAINMENT BERM
- CONTAINMENT WALL

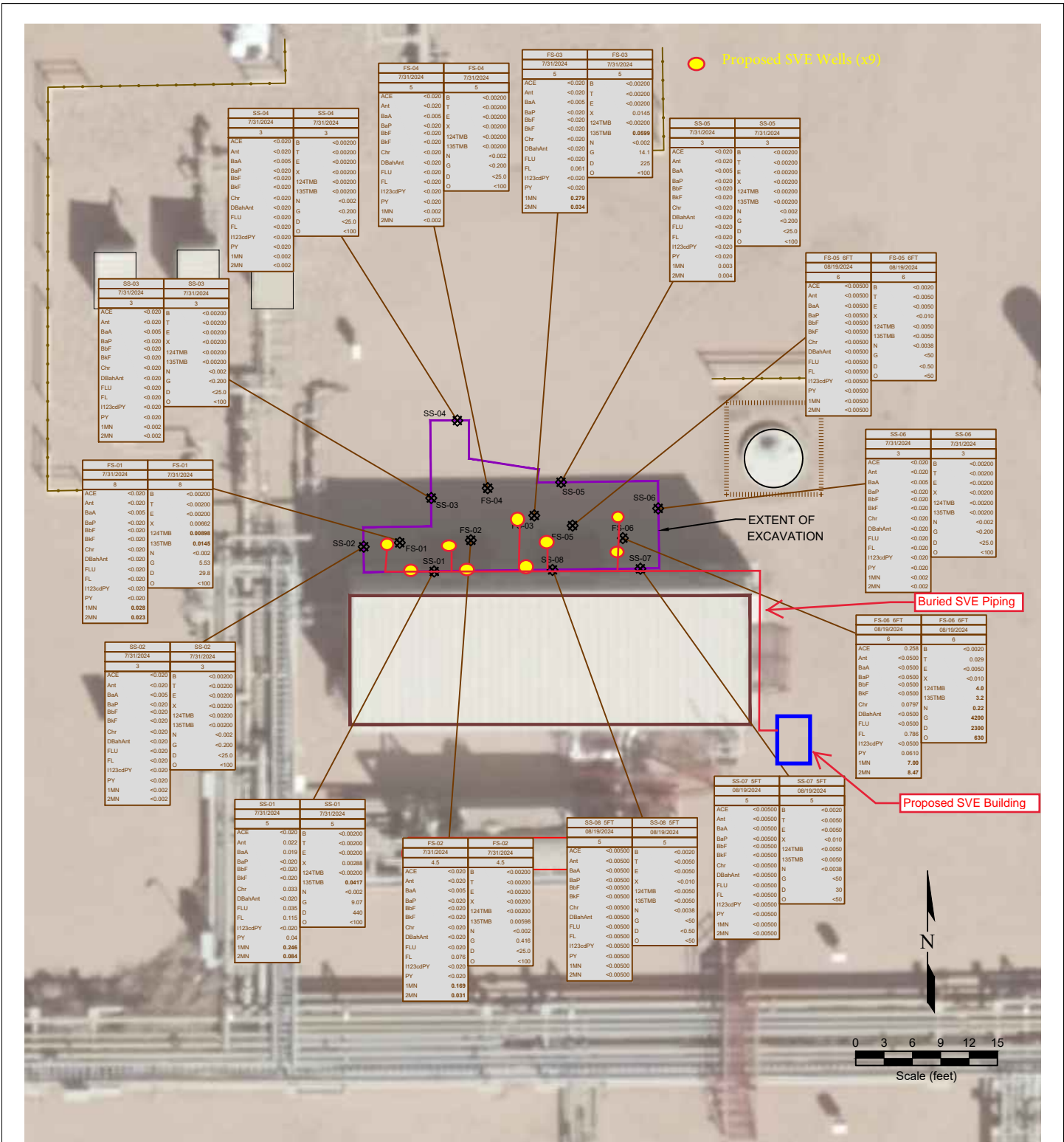
SAMPLE ID	DATE SAMPLED	DEPTH (ft)	ARSENIC (mg/kg)	BARIUM (mg/kg)	CADMIUM (mg/kg)	CHROMIUM (mg/kg)	COPPER (mg/kg)	LEAD (mg/kg)	NICKEL (mg/kg)	SELENIUM (mg/kg)	SILVER (mg/kg)	ZINC (mg/kg)	pH	EC (mmhos/cm)	SAR (unitless)	B (mg/L)
As	7/31/2024	0.01	2.89	91.4	0.0894	<-0.100	5.83	4.81	<-0.226	<-0.0985	<-31.0	8.43	1.08	2.88	0.221	
BA	7/31/2024	0.01		91.4												
CD	7/31/2024	0.01			0.0894	<-0.100										
CR(VI)	7/31/2024	0.01			<-0.100	<-0.100										
CU	7/31/2024	0.01				-8.35	5.83	4.81	<-0.226	<-0.0985	<-31.0					
PB	7/31/2024	0.01					3.89	2.35	<-0.226	<-0.0985	<-32.2					
Ni	7/31/2024	0.01						2.35	<-0.226	<-0.0985	<-32.2					
SE	7/31/2024	0.01							<-0.226	<-0.0985	<-32.2					
AG	7/31/2024	0.01								<-0.0985	<-32.2					
Z	7/31/2024	0.01									<-31.0					

**Figure 4**

**METALS AND INORGANIC SOIL CHEMISTRY MAP**

**Noble ~ Wells Ranch BB03 Econode**  
 SWNW Sec. 3, T5N, R63W, 6th PM  
 Weld County, Colorado  
 40.429001°, -104.429881°

Project No.	API #	Initial Spill/Release Report Doc#	
<b>CO24-148</b>		<b>403861594</b>	
Date	Facility ID	Filename	
<b>9/25/24</b>	<b>448147</b>	<b>24148Q1</b>	



**LEGEND**

- POINT OF RELEASE
- SOIL SAMPLE LOCATION
- ABOVE GROUND STORAGE TANK
- FORMER FACILITY
- BUILDING
- BUILDING
- EXTENT OF EXCAVATION
- FENCE LINE
- CONTAINMENT BERM
- CONTAINMENT WALL

SAMPLE ID	DEPTH	DATE	DATE SAMPLED	SAMPLE ID	DEPTH	DATE	DATE SAMPLED
ACE	<0.0020			B	<0.0020		
Ant	<0.0050			T	<0.0050		
BaA	<0.0050			E	<0.0050		
BaP	<0.0050			X	<0.010		
BbF	<0.0050			124TMB	<0.0050		
BbF	<0.0050			135TMB	<0.0050		
Chr	<0.0050			N	<0.002		
DBaAnt	<0.0050			G	<0.002		
FLU	<0.0050			D	<25.0		
FL	<0.0050			O	<100		
1123cdPY	<0.0050						
PY	<0.0050						
1MN	<0.0050						
2MN	<0.0050						

**Figure 5**  
**PROPOSED BORINGS AND SVE**  
**MAP**

**Noble ~ Wells Ranch BB03 Econode**  
 SWNW Sec. 3, T5N, R63W, 6th PM  
 Weld County, Colorado  
 40.429001°, -104.429881°

Project No.	API #	Initial Spill/Release Report Doc#
CO24-148		403861594
Date	Facility ID	Filename
9/25/24	448147	24148Q1