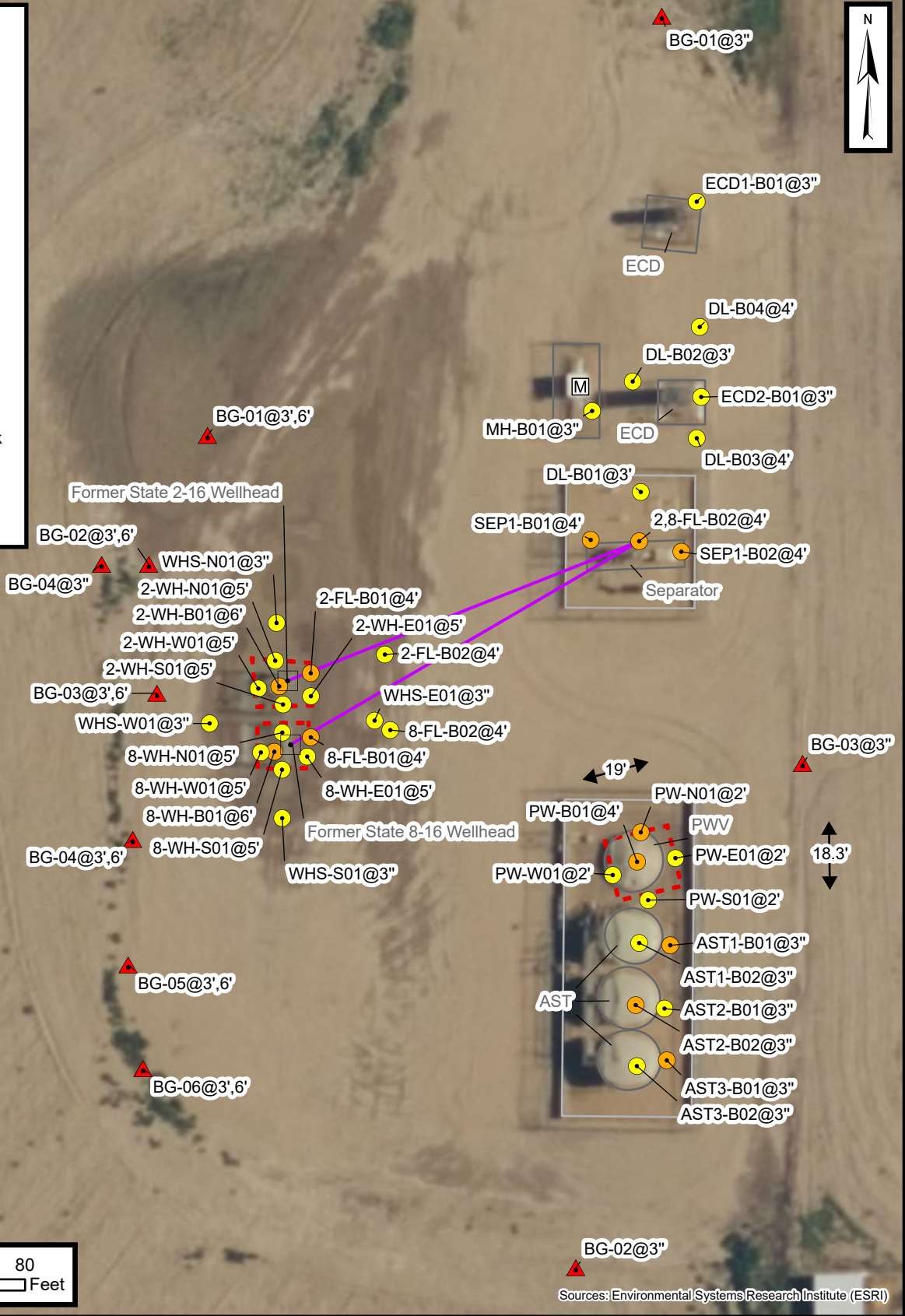


Legend

- P&A'd Wellhead
- Soil Sample
- Soil Screening
- Background Soil Sample
- Meter House
- Approximate Location of Flowline (Removed)
- Former Metal Berm
- Former Infrastructure
- Excavation Extent

Notes
 BBL: Barrel
 AST: Above Ground Storage Tank
 PWV: Produced Water Vessel
 ECD: Emission Control Device
 Excavation extents are approximated based on sample location data

Default Folder: C:\Users\Morgan\OneDrive - ENSOLUM, LLC\Ensolium\GIS\0 - Projects\Kerr-McGee Oil and Gas Onshore, LP\09A1417975 - State 2, 7, 26-16 Facility & State 2, 8-16 Wellheads



Excavation Site Map

State 2, 7, 26-16 Facility & State 2, 8-16 Wellheads
 Kerr-McGee Oil and Gas Onshore, LP
 NENW SEC 16-T1N-R68W
 Weld County, Colorado

Project Number: 09A1417975

FIGURE

1

