



# P&A Wellbore For State

Well Name: George 12N

Original Hole [Land]		Well Header			
MD (ftK B)	Vertical schematic (actual)	Surface UWI	Business Unit	Gov Auth Dist	Prod Tree Loc
		0512351768	Rockies	Evans	Land
		Orig. KB to Gnd (ft)	Original Spud Date	Abandon Date	Well Sub-Status
		25.00	4/6/2024		PR
		Comment			
		Surface Location (Congressional)			
		Qtr 3	Qtr 4	Section	Township
		SW	NE	21	4
		Range	Rng E/...	Latitude (°)	Longitude (°)
		64	W	40.299971	-104.554509
		Wellbore Sections			
		Section Des	Hole Size (in)	Top Depth (ftKB)	Btm Depth (ftKB)
		Conductor	16	25.0	105.0
		Surface	13 1/2	105.0	1,974.0
		Production	8 1/2	1,974.0	18,046.0
		Casing Strings			
		Csg Des	Run Date	OD (in)	Wt/Len (lb/ft)
		Conductor	2/6/2024	16	84.00
		Surface	2/28/2024	9 5/8	36.00
		Production	4/8/2024	5 1/2	20.00
				Grade	Top Depth (MD) (ftKB)
				J-55	25
				J-55	25
				P-110	25
				Set Depth (MD) (ftKB)	
					105
					1964
					18037
		Cement			
		Des	Start Date	Top (ftKB)	Btm (ftKB)
		Conductor Cement	2/6/2024	25.0	105.0
		Surface	2/28/2024	25.0	1,964.0
		Production Casing Cement	4/9/2024	25.0	18,037.0
		Zone Statuses			
		Zone Name	Status Date	Status	Fluid Type
					Job
					Prod Method
		Perforation Data			
		Linked Zone	Explosive Type	Entered Shot Total	Top (ftKB)
					Btm (ftKB)
					Date
		Niobrara, Original Hole		4	7,943.0
		Niobrara, Original Hole		4	7,944.0
		Niobrara, Original Hole		4	7,991.0
		Niobrara, Original Hole		4	7,992.0
		Niobrara, Original Hole		4	8,039.0
		Niobrara, Original Hole		4	8,040.0
		Niobrara, Original Hole		4	8,087.0
		Niobrara, Original Hole		4	8,088.0
		Niobrara, Original Hole		4	8,135.0
		Niobrara, Original Hole		4	8,136.0
		Niobrara, Original Hole		4	8,184.0
		Niobrara, Original Hole		4	8,185.0
		Niobrara, Original Hole		4	8,214.0
		Niobrara, Original Hole		4	8,215.0
		Niobrara, Original Hole		4	8,262.0
		Niobrara, Original Hole		4	8,263.0
		Niobrara, Original Hole		4	8,310.0
		Niobrara, Original Hole		4	8,311.0
		Niobrara, Original Hole		4	8,358.0
		Niobrara, Original Hole		4	8,359.0
		Niobrara, Original Hole		4	8,404.0
		Niobrara, Original Hole		4	8,405.0
		Niobrara, Original Hole		4	8,455.0
		Niobrara, Original Hole		4	8,456.0
		Niobrara, Original Hole		4	8,485.0
		Niobrara, Original Hole		4	8,486.0
		Niobrara, Original Hole		4	8,532.0
		Niobrara, Original Hole		4	8,533.0
		Niobrara, Original Hole		4	8,583.0
		Niobrara, Original Hole		4	8,584.0
		Niobrara, Original Hole		4	8,629.0
		Niobrara, Original Hole		4	8,630.0
		Niobrara, Original Hole		4	8,677.0
		Niobrara, Original Hole		4	8,678.0
		Niobrara, Original Hole		4	8,726.0
		Niobrara, Original Hole		4	8,727.0
		Niobrara, Original Hole		4	8,757.0
		Niobrara, Original Hole		4	8,758.0
		Niobrara, Original Hole		4	8,805.0
		Niobrara, Original Hole		4	8,806.0
		Niobrara, Original Hole		4	8,853.0
		Niobrara, Original Hole		4	8,854.0
		Niobrara, Original Hole		4	8,901.0
		Niobrara, Original Hole		4	8,902.0
		Niobrara, Original Hole		4	8,949.0
		Niobrara, Original Hole		4	8,950.0
		Niobrara, Original Hole		4	8,998.0
		Niobrara, Original Hole		4	8,999.0
		Niobrara, Original Hole		4	9,028.0
		Niobrara, Original Hole		4	9,029.0
		Niobrara, Original Hole		4	9,076.0
		Niobrara, Original Hole		4	9,077.0
		Niobrara, Original Hole		4	9,124.0
		Niobrara, Original Hole		4	9,125.0
		Niobrara, Original Hole		4	9,172.0
		Niobrara, Original Hole		4	9,173.0
		Niobrara, Original Hole		4	9,220.0
		Niobrara, Original Hole		4	9,221.0
		Niobrara, Original Hole		4	9,269.0
		Niobrara, Original Hole		4	9,270.0
		Niobrara, Original Hole		4	9,300.0
		Niobrara, Original Hole		4	9,301.0
		Niobrara, Original Hole		4	9,348.0
		Niobrara, Original Hole		4	9,349.0
		Niobrara, Original Hole		4	9,396.0
		Niobrara, Original Hole		4	9,397.0
		Niobrara, Original Hole		4	9,444.0
		Niobrara, Original Hole		4	9,445.0
		Niobrara, Original Hole		4	9,492.0
		Niobrara, Original Hole		4	9,493.0



# P&A Wellbore For State

Well Name: George 12N

Original Hole [Land]		Perforation Data					
MD (ftKB)	Vertical schematic (actual)	Linked Zone	Explosive Type	Entered Shot Total	Top (ftKB)	Btm (ftKB)	Date
7,776.9		Niobrara, Original Hole		4	9,541.0	9,542.0	10/16/2024
8,214.9		Niobrara, Original Hole		4	9,571.0	9,572.0	10/16/2024
8,628.9		Niobrara, Original Hole		4	9,619.0	9,620.0	10/16/2024
8,999.0		Niobrara, Original Hole		4	9,667.0	9,668.0	10/16/2024
9,396.0		Niobrara, Original Hole		4	9,715.0	9,716.0	10/16/2024
9,762.1		Niobrara, Original Hole		4	9,761.0	9,762.0	10/16/2024
10,160.1		Niobrara, Original Hole		4	9,816.0	9,817.0	10/16/2024
10,529.9		Niobrara, Original Hole		4	9,842.0	9,843.0	10/16/2024
10,928.1		Niobrara, Original Hole		4	9,890.0	9,891.0	10/16/2024
11,295.9		Niobrara, Original Hole		4	9,938.0	9,939.0	10/16/2024
11,711.9		Niobrara, Original Hole		4	9,982.0	9,983.0	10/16/2024
12,063.0		Niobrara, Original Hole		4	10,036.0	10,037.0	10/16/2024
12,477.0		Niobrara, Original Hole		4	10,083.0	10,084.0	10/16/2024
12,829.1		Niobrara, Original Hole		4	10,114.0	10,115.0	10/16/2024
13,194.9		Niobrara, Original Hole		4	10,160.0	10,161.0	10/16/2024
13,566.9		Niobrara, Original Hole		4	10,212.0	10,213.0	10/16/2024
13,962.9		Niobrara, Original Hole		4	10,258.0	10,259.0	10/16/2024
14,330.1		Niobrara, Original Hole		4	10,306.0	10,307.0	10/16/2024
14,728.0		Niobrara, Original Hole		4	10,355.0	10,356.0	10/16/2024
15,096.1		Niobrara, Original Hole		4	10,388.0	10,389.0	10/16/2024
15,511.2		Niobrara, Original Hole		4	10,433.0	10,434.0	10/16/2024
15,861.9		Niobrara, Original Hole		4	10,481.0	10,482.0	10/16/2024
16,276.9		Niobrara, Original Hole		4	10,529.0	10,530.0	10/16/2024
16,628.0		Niobrara, Original Hole		4	10,577.0	10,578.0	10/16/2024
17,043.0		Niobrara, Original Hole		4	10,626.0	10,627.0	10/16/2024
17,412.1		Niobrara, Original Hole		4	10,657.0	10,658.0	10/15/2024
17,809.1		Niobrara, Original Hole		4	10,705.0	10,706.0	10/15/2024
		Niobrara, Original Hole		4	10,753.0	10,754.0	10/15/2024
		Niobrara, Original Hole		4	10,801.0	10,802.0	10/15/2024
		Niobrara, Original Hole		4	10,849.0	10,850.0	10/15/2024
		Niobrara, Original Hole		4	10,898.0	10,899.0	10/15/2024
		Niobrara, Original Hole		4	10,928.0	10,929.0	10/15/2024
		Niobrara, Original Hole		4	10,976.0	10,977.0	10/15/2024
		Niobrara, Original Hole		4	11,024.0	11,025.0	10/15/2024
		Niobrara, Original Hole		4	11,072.0	11,073.0	10/15/2024
		Niobrara, Original Hole		4	11,120.0	11,121.0	10/15/2024
		Niobrara, Original Hole		4	11,169.0	11,170.0	10/15/2024
		Niobrara, Original Hole		4	11,199.0	11,200.0	10/15/2024
		Niobrara, Original Hole		4	11,247.0	11,248.0	10/15/2024
		Niobrara, Original Hole		4	11,295.0	11,296.0	10/15/2024
	Niobrara, Original Hole		4	11,343.0	11,344.0	10/15/2024	
	Niobrara, Original Hole		4	11,388.0	11,389.0	10/15/2024	
	Niobrara, Original Hole		4	11,440.0	11,441.0	10/15/2024	
	Niobrara, Original Hole		4	11,471.0	11,472.0	10/15/2024	
	Niobrara, Original Hole		4	11,519.0	11,520.0	10/15/2024	
	Niobrara, Original Hole		4	11,564.0	11,565.0	10/15/2024	
	Niobrara, Original Hole		4	11,619.0	11,620.0	10/15/2024	
	Niobrara, Original Hole		4	11,663.0	11,664.0	10/15/2024	
	Niobrara, Original Hole		4	11,712.0	11,713.0	10/15/2024	
	Niobrara, Original Hole		4	11,742.0	11,743.0	10/15/2024	
	Niobrara, Original Hole		4	11,795.0	11,796.0	10/15/2024	
	Niobrara, Original Hole		4	11,838.0	11,839.0	10/15/2024	
	Niobrara, Original Hole		4	11,886.0	11,887.0	10/15/2024	
	Niobrara, Original Hole		4	11,934.0	11,935.0	10/15/2024	
	Niobrara, Original Hole		4	11,983.0	11,984.0	10/15/2024	
	Niobrara, Original Hole		4	12,014.0	12,015.0	10/15/2024	
	Niobrara, Original Hole		4	12,062.0	12,063.0	10/15/2024	
	Niobrara, Original Hole		4	12,110.0	12,111.0	10/15/2024	
	Niobrara, Original Hole		4	12,158.0	12,159.0	10/15/2024	
	Niobrara, Original Hole		4	12,206.0	12,207.0	10/15/2024	



# P&A Wellbore For State

Well Name: George 12N

Original Hole [Land]		Perforation Data					
MD (ftKB)	Vertical schematic (actual)	Linked Zone	Explosive Type	Entered Shot Total	Top (ftKB)	Btm (ftKB)	Date
		Niobrara, Original Hole		4	12,255.0	12,256.0	10/15/2024
		Niobrara, Original Hole		4	12,285.0	12,286.0	10/14/2024
		Niobrara, Original Hole		4	12,333.0	12,334.0	10/14/2024
		Niobrara, Original Hole		4	12,381.0	12,382.0	10/14/2024
		Niobrara, Original Hole		4	12,429.0	12,430.0	10/14/2024
7,776.9		Niobrara, Original Hole		4	12,477.0	12,478.0	10/14/2024
		Niobrara, Original Hole		4	12,526.0	12,527.0	10/14/2024
8,214.9		Niobrara, Original Hole		4	12,556.0	12,557.0	10/14/2024
		Niobrara, Original Hole		4	12,604.0	12,605.0	10/14/2024
8,628.9		Niobrara, Original Hole		4	12,652.0	12,653.0	10/14/2024
		Niobrara, Original Hole		4	12,700.0	12,701.0	10/14/2024
8,999.0		Niobrara, Original Hole		4	12,748.0	12,749.0	10/14/2024
		Niobrara, Original Hole		4	12,797.0	12,798.0	10/14/2024
9,396.0		Niobrara, Original Hole		4	12,828.0	12,829.0	10/14/2024
		Niobrara, Original Hole		4	12,876.0	12,877.0	10/14/2024
9,762.1		Niobrara, Original Hole		4	12,924.0	12,925.0	10/14/2024
		Niobrara, Original Hole		4	12,972.0	12,973.0	10/14/2024
10,160.1		Niobrara, Original Hole		4	13,020.0	13,021.0	10/14/2024
		Niobrara, Original Hole		4	13,069.0	13,070.0	10/14/2024
10,529.9		Niobrara, Original Hole		4	13,099.0	13,100.0	10/14/2024
		Niobrara, Original Hole		4	13,147.0	13,148.0	10/14/2024
10,928.1		Niobrara, Original Hole		4	13,195.0	13,196.0	10/14/2024
		Niobrara, Original Hole		4	13,243.0	13,244.0	10/14/2024
11,295.9		Niobrara, Original Hole		4	13,291.0	13,292.0	10/14/2024
		Niobrara, Original Hole		4	13,338.0	13,339.0	10/14/2024
11,711.9		Niobrara, Original Hole		4	13,371.0	13,372.0	10/14/2024
		Niobrara, Original Hole		4	13,419.0	13,420.0	10/14/2024
12,063.0		Niobrara, Original Hole		4	13,467.0	13,468.0	10/14/2024
		Niobrara, Original Hole		4	13,515.0	13,516.0	10/14/2024
12,477.0		Niobrara, Original Hole		4	13,566.0	13,567.0	10/14/2024
		Niobrara, Original Hole		4	13,612.0	13,613.0	10/14/2024
12,829.1		Niobrara, Original Hole		4	13,642.0	13,643.0	10/13/2024
		Niobrara, Original Hole		4	13,690.0	13,691.0	10/13/2024
13,194.9		Niobrara, Original Hole		4	13,734.0	13,735.0	10/13/2024
		Niobrara, Original Hole		4	13,785.0	13,786.0	10/13/2024
13,566.9		Niobrara, Original Hole		4	13,834.0	13,835.0	10/13/2024
		Niobrara, Original Hole		4	13,883.0	13,884.0	10/13/2024
13,962.9		Niobrara, Original Hole		4	13,913.0	13,914.0	10/13/2024
		Niobrara, Original Hole		4	13,963.0	13,964.0	10/13/2024
14,330.1		Niobrara, Original Hole		4	14,009.0	14,010.0	10/13/2024
		Niobrara, Original Hole		4	14,057.0	14,058.0	10/13/2024
14,728.0		Niobrara, Original Hole		4	14,105.0	14,106.0	10/13/2024
		Niobrara, Original Hole		4	14,154.0	14,155.0	10/13/2024
15,096.1		Niobrara, Original Hole		4	14,185.0	14,186.0	10/13/2024
		Niobrara, Original Hole		4	14,233.0	14,234.0	10/13/2024
15,511.2		Niobrara, Original Hole		4	14,281.0	14,282.0	10/13/2024
		Niobrara, Original Hole		4	14,329.0	14,330.0	10/13/2024
15,861.9		Niobrara, Original Hole		4	14,377.0	14,378.0	10/13/2024
		Niobrara, Original Hole		4	14,426.0	14,427.0	10/13/2024
16,276.9		Niobrara, Original Hole		4	14,456.0	14,457.0	10/13/2024
		Niobrara, Original Hole		4	14,504.0	14,505.0	10/13/2024
16,628.0		Niobrara, Original Hole		4	14,552.0	14,553.0	10/13/2024
		Niobrara, Original Hole		4	14,600.0	14,601.0	10/13/2024
17,043.0		Niobrara, Original Hole		4	14,648.0	14,649.0	10/13/2024
		Niobrara, Original Hole		4	14,697.0	14,698.0	10/13/2024
17,412.1		Niobrara, Original Hole		4	14,728.0	14,729.0	10/13/2024
		Niobrara, Original Hole		4	14,776.0	14,777.0	10/13/2024
17,809.1		Niobrara, Original Hole		4	14,824.0	14,825.0	10/13/2024
		Niobrara, Original Hole		4	14,872.0	14,873.0	10/13/2024
		Niobrara, Original Hole		4	14,920.0	14,921.0	10/13/2024



# P&A Wellbore For State

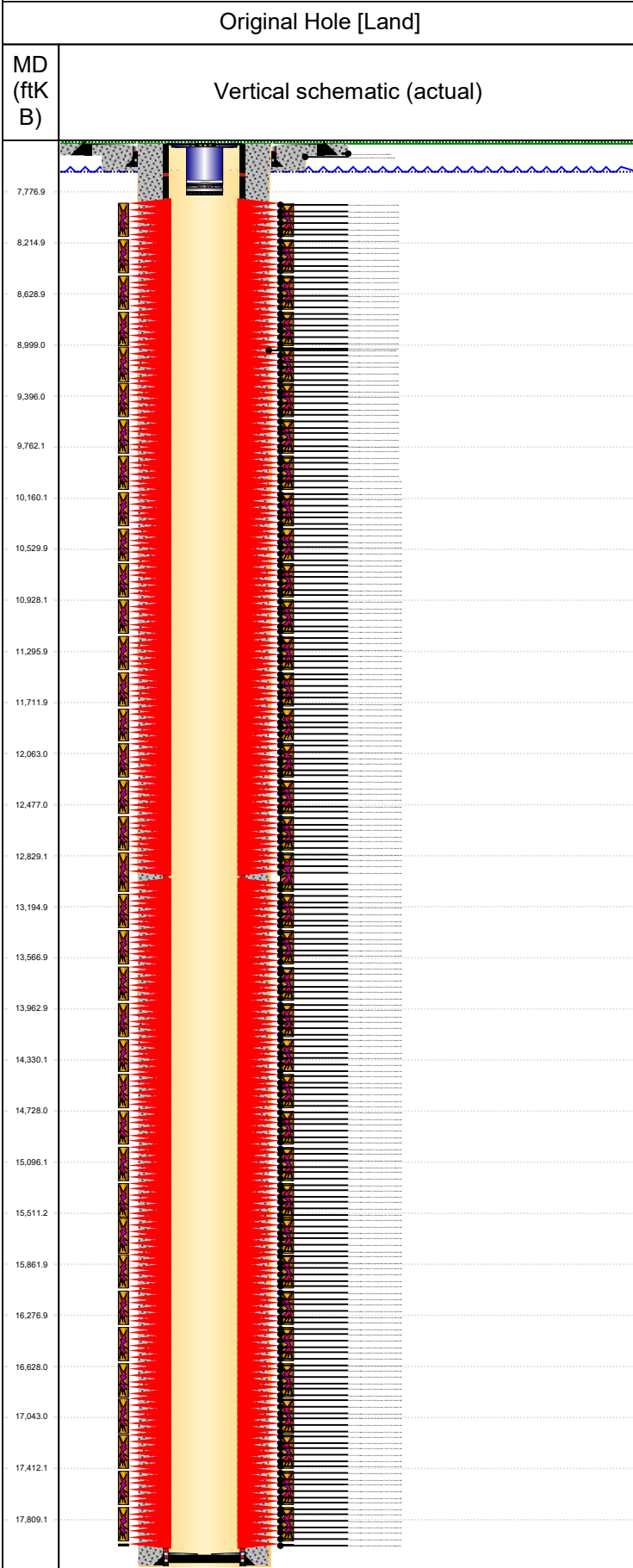
Well Name: George 12N

Original Hole [Land]		Perforation Data					
MD (ftKB)	Vertical schematic (actual)	Linked Zone	Explosive Type	Entered Shot Total	Top (ftKB)	Btm (ftKB)	Date
		Niobrara, Original Hole		4	14,969.0	14,970.0	10/13/2024
		Niobrara, Original Hole		4	14,999.0	15,000.0	10/13/2024
		Niobrara, Original Hole		4	15,047.0	15,048.0	10/13/2024
		Niobrara, Original Hole		4	15,095.0	15,096.0	10/13/2024
7,776.9		Niobrara, Original Hole		4	15,143.0	15,144.0	10/13/2024
		Niobrara, Original Hole		4	15,189.0	15,190.0	10/13/2024
8,214.9		Niobrara, Original Hole		4	15,242.0	15,243.0	10/13/2024
		Niobrara, Original Hole		4	15,270.0	15,271.0	10/12/2024
8,628.9		Niobrara, Original Hole		4	15,318.0	15,319.0	10/12/2024
		Niobrara, Original Hole		4	15,363.0	15,364.0	10/12/2024
8,999.0		Niobrara, Original Hole		4	15,417.0	15,418.0	10/12/2024
		Niobrara, Original Hole		4	15,462.0	15,463.0	10/12/2024
9,396.0		Niobrara, Original Hole		4	15,511.0	15,512.0	10/12/2024
		Niobrara, Original Hole		4	15,544.0	15,545.0	10/12/2024
9,762.1		Niobrara, Original Hole		4	15,590.0	15,591.0	10/12/2024
		Niobrara, Original Hole		4	15,638.0	15,639.0	10/12/2024
10,160.1		Niobrara, Original Hole		4	15,686.0	15,687.0	10/12/2024
		Niobrara, Original Hole		4	15,734.0	15,735.0	10/12/2024
10,529.9		Niobrara, Original Hole		4	15,783.0	15,784.0	10/12/2024
		Niobrara, Original Hole		4	15,813.0	15,814.0	10/12/2024
10,928.1		Niobrara, Original Hole		4	15,861.0	15,862.0	10/12/2024
		Niobrara, Original Hole		4	15,909.0	15,910.0	10/12/2024
11,295.9		Niobrara, Original Hole		4	15,957.0	15,958.0	10/12/2024
		Niobrara, Original Hole		4	16,005.0	16,006.0	10/12/2024
11,711.9		Niobrara, Original Hole		4	16,054.0	16,055.0	10/12/2024
		Niobrara, Original Hole		4	16,085.0	16,086.0	10/12/2024
12,063.0		Niobrara, Original Hole		4	16,133.0	16,134.0	10/12/2024
		Niobrara, Original Hole		4	16,181.0	16,182.0	10/12/2024
12,477.0		Niobrara, Original Hole		4	16,229.0	16,230.0	10/12/2024
		Niobrara, Original Hole		4	16,277.0	16,278.0	10/12/2024
12,829.1		Niobrara, Original Hole		4	16,323.0	16,324.0	10/12/2024
		Niobrara, Original Hole		4	16,356.0	16,357.0	10/12/2024
13,194.9		Niobrara, Original Hole		4	16,404.0	16,405.0	10/12/2024
		Niobrara, Original Hole		4	16,452.0	16,453.0	10/12/2024
13,566.9		Niobrara, Original Hole		4	16,500.0	16,501.0	10/12/2024
		Niobrara, Original Hole		4	16,545.0	16,546.0	10/12/2024
13,962.9		Niobrara, Original Hole		4	16,597.0	16,598.0	10/12/2024
		Niobrara, Original Hole		4	16,627.0	16,628.0	10/11/2024
14,330.1		Niobrara, Original Hole		4	16,675.0	16,676.0	10/11/2024
		Niobrara, Original Hole		4	16,720.0	16,721.0	10/11/2024
14,728.0		Niobrara, Original Hole		4	16,773.0	16,774.0	10/11/2024
		Niobrara, Original Hole		4	16,819.0	16,820.0	10/11/2024
15,096.1		Niobrara, Original Hole		4	16,868.0	16,869.0	10/11/2024
		Niobrara, Original Hole		4	16,905.0	16,906.0	10/11/2024
15,511.2		Niobrara, Original Hole		4	16,950.0	16,951.0	10/11/2024
		Niobrara, Original Hole		4	16,995.0	16,996.0	10/11/2024
15,861.9		Niobrara, Original Hole		4	17,043.0	17,044.0	10/11/2024
		Niobrara, Original Hole		4	17,091.0	17,092.0	10/11/2024
16,276.9		Niobrara, Original Hole		4	17,140.0	17,141.0	10/11/2024
		Niobrara, Original Hole		4	17,170.0	17,171.0	10/11/2024
16,628.0		Niobrara, Original Hole		4	17,218.0	17,219.0	10/11/2024
		Niobrara, Original Hole		4	17,266.0	17,267.0	10/11/2024
17,043.0		Niobrara, Original Hole		4	17,314.0	17,315.0	10/11/2024
		Niobrara, Original Hole		4	17,362.0	17,363.0	10/11/2024
17,412.1		Niobrara, Original Hole		4	17,411.0	17,412.0	10/11/2024
		Niobrara, Original Hole		4	17,442.0	17,443.0	10/11/2024
17,809.1		Niobrara, Original Hole		4	17,490.0	17,491.0	10/11/2024
		Niobrara, Original Hole		4	17,538.0	17,539.0	10/11/2024
		Niobrara, Original Hole		4	17,586.0	17,587.0	10/11/2024
		Niobrara, Original Hole		4	17,634.0	17,635.0	10/11/2024



# P&A Wellbore For State

Well Name: George 12N



Perforation Data					
Linked Zone	Explosive Type	Entered Shot Total	Top (ftKB)	Btm (ftKB)	Date
Niobrara, Original Hole		4	17,683.0	17,684.0	10/11/2024
Niobrara, Original Hole		4	17,713.0	17,714.0	10/11/2024
Niobrara, Original Hole		4	17,761.0	17,762.0	10/11/2024
Niobrara, Original Hole		4	17,809.0	17,810.0	10/11/2024
Niobrara, Original Hole		4	17,857.0	17,858.0	10/11/2024
Niobrara, Original Hole		4	17,903.0	17,904.0	10/11/2024
Niobrara, Original Hole		4	17,928.0	17,929.0	10/11/2024
Niobrara, Original Hole	RDX	12	17,985.0	17,987.0	8/10/2024

Stim/Frac Stage			
Zone	Start Date	Top (ftKB)	Btm (ftKB)
Niobrara, Original Hole	10/17/2024	7,943.0	8,185.0
Niobrara, Original Hole	10/17/2024	8,214.0	8,456.0
Niobrara, Original Hole	10/17/2024	8,485.0	8,727.0
Niobrara, Original Hole	10/17/2024	8,757.0	8,999.0
Niobrara, Original Hole	10/17/2024	9,028.0	9,270.0
Niobrara, Original Hole	10/17/2024	9,300.0	9,542.0
Niobrara, Original Hole	10/16/2024	9,571.0	9,817.0
Niobrara, Original Hole	10/16/2024	9,842.0	10,084.0
Niobrara, Original Hole	10/16/2024	10,114.0	10,356.0
Niobrara, Original Hole	10/16/2024	10,388.0	10,627.0
Niobrara, Original Hole	10/16/2024	10,657.0	10,899.0
Niobrara, Original Hole	10/15/2024	10,928.0	11,170.0
Niobrara, Original Hole	10/15/2024	11,199.0	11,441.0
Niobrara, Original Hole	10/15/2024	11,471.0	11,713.0
Niobrara, Original Hole	10/15/2024	11,742.0	11,984.0
Niobrara, Original Hole	10/15/2024	12,014.0	12,256.0
Niobrara, Original Hole	10/14/2024	12,285.0	12,527.0
Niobrara, Original Hole	10/14/2024	12,556.0	12,798.0
Niobrara, Original Hole	10/14/2024	12,828.0	13,070.0
Niobrara, Original Hole	10/14/2024	13,099.0	13,339.0
Niobrara, Original Hole	10/14/2024	13,371.0	13,613.0
Niobrara, Original Hole	10/14/2024	13,642.0	13,884.0
Niobrara, Original Hole	10/13/2024	13,913.0	14,155.0
Niobrara, Original Hole	10/13/2024	14,185.0	14,427.0
Niobrara, Original Hole	10/13/2024	14,456.0	14,698.0
Niobrara, Original Hole	10/13/2024	14,728.0	14,970.0
Niobrara, Original Hole	10/13/2024	14,999.0	15,243.0
Niobrara, Original Hole	10/13/2024	15,270.0	15,512.0
Niobrara, Original Hole	10/12/2024	15,544.0	15,784.0
Niobrara, Original Hole	10/12/2024	15,813.0	16,055.0
Niobrara, Original Hole	10/12/2024	16,085.0	16,324.0
Niobrara, Original Hole	10/12/2024	16,356.0	16,598.0
Niobrara, Original Hole	10/12/2024	16,627.0	16,869.0
Niobrara, Original Hole	10/11/2024	16,905.0	17,141.0
Niobrara, Original Hole	10/11/2024	17,170.0	17,412.0
Niobrara, Original Hole	10/11/2024	17,442.0	17,684.0
Niobrara, Original Hole	10/11/2024	17,713.0	17,929.0
Niobrara, Original Hole	10/10/2024	17,985.0	17,987.0

Other In Hole					
Run Date	Des	Make	OD (in)	Top (ftKB)	Btm (ftKB)

Logs			
Date	Type	Depth Top (MD) (ftKB)	Btm (ftKB)

Wellbore Plug Back Total Depths			
Date	Type	Com	PBTD (ftKB)
11/4/2024	Ball Seat	PBTD BASED ON CT MEASUREMENT	18,000
12/11/2024	Float Collar		18,030