





# P&A Wellbore For State

Well Name: George 09N

Original Hole [Land]		Perforation Data						
MD (ftKB)	Vertical schematic (actual)	Linked Zone	Explosive Type	Entered Shot Total	Top (ftKB)	Btm (ftKB)	Date	
6,378.9		Niobrara, Original Hole		4	9,380.0	9,381.0	10/7/2024	
7,828.1		Niobrara, Original Hole		4	9,426.0	9,427.0	10/7/2024	
8,244.1		Niobrara, Original Hole		4	9,460.0	9,461.0	10/6/2024	
8,613.8		Niobrara, Original Hole		4	9,508.0	9,509.0	10/6/2024	
8,962.9		Niobrara, Original Hole		4	9,556.0	9,557.0	10/6/2024	
9,333.0		Niobrara, Original Hole		4	9,602.0	9,603.0	10/6/2024	
9,732.0		Niobrara, Original Hole		4	9,657.0	9,658.0	10/6/2024	
10,101.0		Niobrara, Original Hole		4	9,702.0	9,703.0	10/6/2024	
10,518.0		Niobrara, Original Hole		4	9,732.0	9,733.0	10/6/2024	
10,870.1		Niobrara, Original Hole		4	9,780.0	9,781.0	10/6/2024	
11,287.1		Niobrara, Original Hole		4	9,827.0	9,828.0	10/6/2024	
11,642.1		Niobrara, Original Hole		4	9,877.0	9,878.0	10/6/2024	
12,054.1		Niobrara, Original Hole		4	9,925.0	9,926.0	10/6/2024	
12,424.9		Niobrara, Original Hole		4	9,974.0	9,975.0	10/6/2024	
12,821.9		Niobrara, Original Hole		4	10,003.0	10,004.0	10/6/2024	
13,141.1		Niobrara, Original Hole		4	10,054.0	10,055.0	10/6/2024	
13,544.9		Niobrara, Original Hole		4	10,100.0	10,101.0	10/6/2024	
13,912.1		Niobrara, Original Hole		4	10,149.0	10,150.0	10/6/2024	
14,329.1		Niobrara, Original Hole		4	10,197.0	10,198.0	10/6/2024	
14,680.1		Niobrara, Original Hole		4	10,246.0	10,247.0	10/6/2024	
15,096.1		Niobrara, Original Hole		4	10,276.0	10,277.0	10/6/2024	
15,449.1		Niobrara, Original Hole		4	10,324.0	10,325.0	10/6/2024	
15,865.2		Niobrara, Original Hole		4	10,372.0	10,373.0	10/6/2024	
16,234.9		Niobrara, Original Hole		4	10,421.0	10,422.0	10/6/2024	
16,632.9		Niobrara, Original Hole		4	10,469.0	10,470.0	10/6/2024	
17,003.0		Niobrara, Original Hole		4	10,518.0	10,519.0	10/6/2024	
17,400.9		Niobrara, Original Hole		4	10,548.0	10,549.0	10/6/2024	
17,771.0		Niobrara, Original Hole		4	10,596.0	10,597.0	10/6/2024	
					4	10,644.0	10,645.0	10/6/2024
					4	10,693.0	10,694.0	10/6/2024
					4	10,741.0	10,742.0	10/6/2024
					4	10,790.0	10,791.0	10/6/2024
					4	10,821.0	10,822.0	10/6/2024
					4	10,869.0	10,870.0	10/6/2024
					4	10,917.0	10,918.0	10/6/2024
					4	10,966.0	10,967.0	10/6/2024
					4	11,014.0	11,015.0	10/6/2024
					4	11,063.0	11,064.0	10/6/2024
					4	11,093.0	11,094.0	10/5/2024
					4	11,141.0	11,142.0	10/5/2024
				4	11,189.0	11,190.0	10/5/2024	
				4	11,238.0	11,239.0	10/5/2024	
				4	11,287.0	11,288.0	10/5/2024	
				4	11,335.0	11,336.0	10/5/2024	
				4	11,365.0	11,366.0	10/5/2024	
				4	11,413.0	11,414.0	10/5/2024	
				4	11,464.0	11,465.0	10/5/2024	
				4	11,510.0	11,511.0	10/5/2024	
				4	11,558.0	11,559.0	10/5/2024	
				4	11,607.0	11,608.0	10/5/2024	
				4	11,641.0	11,642.0	10/5/2024	
				4	11,685.0	11,686.0	10/5/2024	
				4	11,733.0	11,734.0	10/5/2024	
				4	11,782.0	11,783.0	10/5/2024	
				4	11,830.0	11,831.0	10/5/2024	
				4	11,879.0	11,880.0	10/5/2024	
				4	11,909.0	11,910.0	10/5/2024	
				4	11,957.0	11,958.0	10/5/2024	
				4	12,005.0	12,006.0	10/5/2024	
				4	12,054.0	12,055.0	10/5/2024	



# P&A Wellbore For State

Well Name: George 09N

Original Hole [Land]		Perforation Data					
MD (ftKB)	Vertical schematic (actual)	Linked Zone	Explosive Type	Entered Shot Total	Top (ftKB)	Btm (ftKB)	Date
		Niobrara, Original Hole		4	12,102.0	12,103.0	10/5/2024
		Niobrara, Original Hole		4	12,146.0	12,147.0	10/5/2024
		Niobrara, Original Hole		4	12,182.0	12,183.0	10/4/2024
		Niobrara, Original Hole		4	12,230.0	12,231.0	10/4/2024
6,378.9		Niobrara, Original Hole		4	12,278.0	12,279.0	10/4/2024
		Niobrara, Original Hole		4	12,327.0	12,328.0	10/4/2024
7,828.1		Niobrara, Original Hole		4	12,375.0	12,376.0	10/4/2024
		Niobrara, Original Hole		4	12,424.0	12,425.0	10/4/2024
8,244.1		Niobrara, Original Hole		4	12,454.0	12,455.0	10/4/2024
		Niobrara, Original Hole		4	12,502.0	12,503.0	10/4/2024
8,613.8		Niobrara, Original Hole		4	12,550.0	12,551.0	10/4/2024
		Niobrara, Original Hole		4	12,599.0	12,600.0	10/4/2024
8,962.9		Niobrara, Original Hole		4	12,647.0	12,648.0	10/4/2024
		Niobrara, Original Hole		4	12,697.0	12,698.0	10/4/2024
9,333.0		Niobrara, Original Hole		4	12,726.0	12,727.0	10/4/2024
		Niobrara, Original Hole		4	12,774.0	12,775.0	10/4/2024
9,732.0		Niobrara, Original Hole		4	12,822.0	12,823.0	10/4/2024
		Niobrara, Original Hole		4	12,874.0	12,875.0	10/4/2024
10,101.0		Niobrara, Original Hole		4	12,919.0	12,920.0	10/4/2024
		Niobrara, Original Hole		4	12,967.0	12,968.0	10/4/2024
10,518.0		Niobrara, Original Hole		4	12,998.0	12,999.0	10/4/2024
		Niobrara, Original Hole		4	13,046.0	13,047.0	10/4/2024
10,870.1		Niobrara, Original Hole		4	13,094.0	13,095.0	10/4/2024
		Niobrara, Original Hole		4	13,140.0	13,141.0	10/4/2024
11,287.1		Niobrara, Original Hole		4	13,193.0	13,194.0	10/4/2024
		Niobrara, Original Hole		4	13,240.0	13,241.0	10/4/2024
11,642.1		Niobrara, Original Hole		4	13,270.0	13,271.0	10/3/2024
		Niobrara, Original Hole		4	13,318.0	13,319.0	10/3/2024
12,054.1		Niobrara, Original Hole		4	13,370.0	13,371.0	10/3/2024
		Niobrara, Original Hole		4	13,415.0	13,416.0	10/3/2024
12,424.9		Niobrara, Original Hole		4	13,463.0	13,464.0	10/3/2024
		Niobrara, Original Hole		4	13,512.0	13,513.0	10/3/2024
12,821.9		Niobrara, Original Hole		4	13,545.0	13,546.0	10/3/2024
		Niobrara, Original Hole		4	13,590.0	13,591.0	10/3/2024
13,141.1		Niobrara, Original Hole		4	13,638.0	13,639.0	10/3/2024
		Niobrara, Original Hole		4	13,687.0	13,688.0	10/3/2024
13,544.9		Niobrara, Original Hole		4	13,735.0	13,736.0	10/3/2024
		Niobrara, Original Hole		4	13,784.0	13,785.0	10/3/2024
13,912.1		Niobrara, Original Hole		4	13,815.0	13,816.0	10/3/2024
		Niobrara, Original Hole		4	13,863.0	13,864.0	10/3/2024
14,329.1	Niobrara, Original Hole		4	13,911.0	13,912.0	10/3/2024	
	Niobrara, Original Hole		4	13,960.0	13,961.0	10/3/2024	
14,680.1	Niobrara, Original Hole		4	14,008.0	14,009.0	10/3/2024	
	Niobrara, Original Hole		4	14,057.0	14,058.0	10/3/2024	
15,096.1	Niobrara, Original Hole		4	14,087.0	14,088.0	10/3/2024	
	Niobrara, Original Hole		4	14,135.0	14,136.0	10/3/2024	
15,449.1	Niobrara, Original Hole		4	14,183.0	14,184.0	10/3/2024	
	Niobrara, Original Hole		4	14,232.0	14,233.0	10/3/2024	
15,865.2	Niobrara, Original Hole		4	14,280.0	14,281.0	10/3/2024	
	Niobrara, Original Hole		4	14,329.0	14,330.0	10/3/2024	
16,234.9	Niobrara, Original Hole		4	14,359.0	14,360.0	10/3/2024	
	Niobrara, Original Hole		4	14,407.0	14,408.0	10/3/2024	
16,632.9	Niobrara, Original Hole		4	14,455.0	14,456.0	10/3/2024	
	Niobrara, Original Hole		4	14,504.0	14,505.0	10/3/2024	
17,003.0	Niobrara, Original Hole		4	14,551.0	14,552.0	10/3/2024	
	Niobrara, Original Hole		4	14,602.0	14,603.0	10/3/2024	
17,400.9	Niobrara, Original Hole		4	14,631.0	14,632.0	10/2/2024	
	Niobrara, Original Hole		4	14,679.0	14,680.0	10/2/2024	
17,771.0	Niobrara, Original Hole		4	14,727.0	14,728.0	10/2/2024	
	Niobrara, Original Hole		4	14,773.0	14,774.0	10/2/2024	



# P&A Wellbore For State

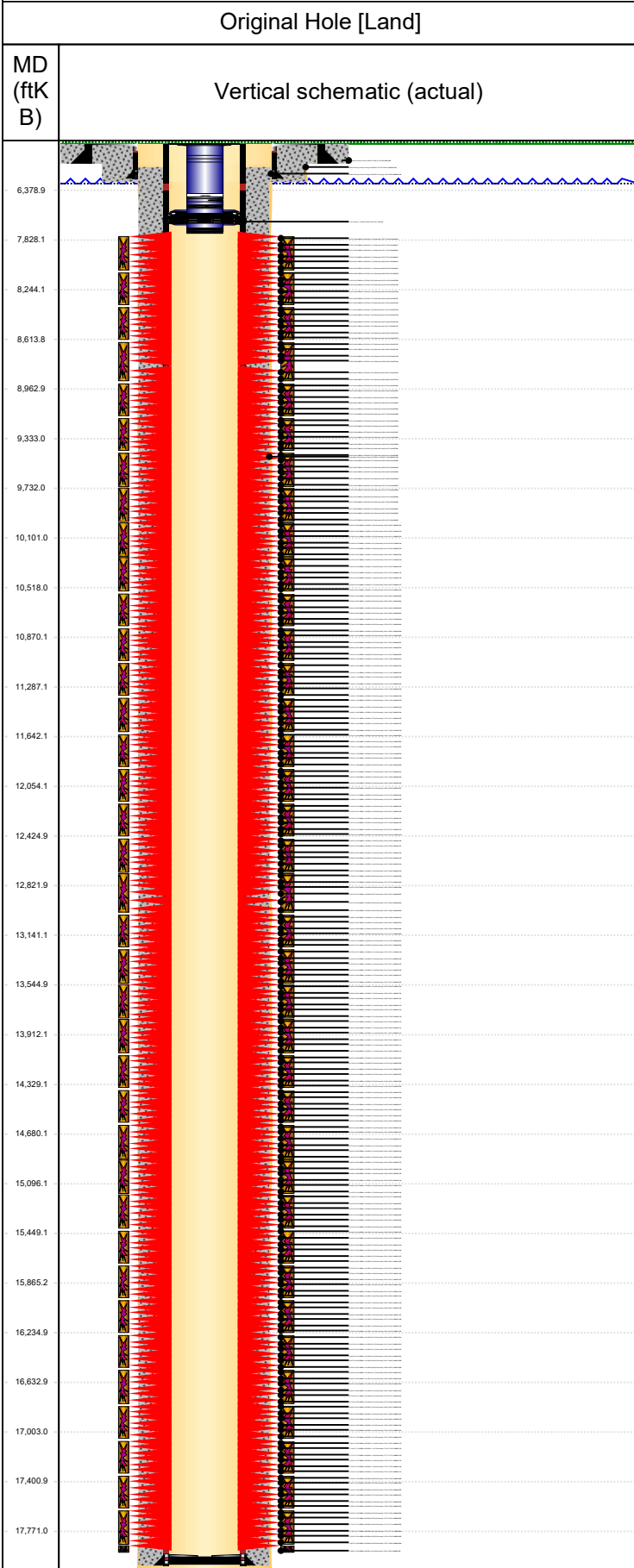
Well Name: George 09N

Original Hole [Land]		Perforation Data					
MD (ftKB)	Vertical schematic (actual)	Linked Zone	Explosive Type	Entered Shot Total	Top (ftKB)	Btm (ftKB)	Date
6,378.9		Niobrara, Original Hole		4	14,824.0	14,825.0	10/2/2024
7,828.1		Niobrara, Original Hole		4	14,873.0	14,874.0	10/2/2024
8,244.1		Niobrara, Original Hole		4	14,903.0	14,904.0	10/2/2024
8,613.8		Niobrara, Original Hole		4	14,949.0	14,950.0	10/2/2024
8,962.9		Niobrara, Original Hole		4	14,999.0	15,000.0	10/2/2024
9,333.0		Niobrara, Original Hole		4	15,048.0	15,049.0	10/2/2024
9,732.0		Niobrara, Original Hole		4	15,096.0	15,097.0	10/2/2024
10,101.0		Niobrara, Original Hole		4	15,145.0	15,146.0	10/2/2024
10,518.0		Niobrara, Original Hole		4	15,176.0	15,177.0	10/2/2024
10,870.1		Niobrara, Original Hole		4	15,224.0	15,225.0	10/2/2024
11,287.1		Niobrara, Original Hole		4	15,272.0	15,273.0	10/2/2024
11,642.1		Niobrara, Original Hole		4	15,321.0	15,322.0	10/2/2024
12,054.1		Niobrara, Original Hole		4	15,369.0	15,370.0	10/2/2024
12,424.9		Niobrara, Original Hole		4	15,418.0	15,419.0	10/2/2024
12,821.9		Niobrara, Original Hole		4	15,448.0	15,449.0	10/1/2024
13,141.1		Niobrara, Original Hole		4	15,496.0	15,497.0	10/1/2024
13,544.9		Niobrara, Original Hole		4	15,544.0	15,545.0	10/1/2024
13,912.1		Niobrara, Original Hole		4	15,593.0	15,594.0	10/1/2024
14,329.1		Niobrara, Original Hole		4	15,641.0	15,642.0	10/1/2024
14,680.1		Niobrara, Original Hole		4	15,690.0	15,691.0	10/1/2024
15,096.1		Niobrara, Original Hole		4	15,720.0	15,721.0	10/1/2024
15,449.1		Niobrara, Original Hole		4	15,768.0	15,769.0	10/1/2024
15,865.2		Niobrara, Original Hole		4	15,816.0	15,817.0	10/1/2024
16,234.9		Niobrara, Original Hole		4	15,865.0	15,866.0	10/1/2024
16,632.9		Niobrara, Original Hole		4	15,913.0	15,914.0	10/1/2024
17,003.0		Niobrara, Original Hole		4	15,962.0	15,963.0	10/1/2024
17,400.9		Niobrara, Original Hole		4	15,992.0	15,993.0	10/1/2024
17,771.0		Niobrara, Original Hole		4	16,040.0	16,041.0	10/1/2024
		Niobrara, Original Hole		4	16,088.0	16,089.0	10/1/2024
		Niobrara, Original Hole		4	16,137.0	16,138.0	10/1/2024
		Niobrara, Original Hole		4	16,182.0	16,183.0	10/1/2024
		Niobrara, Original Hole		4	16,234.0	16,235.0	10/1/2024
		Niobrara, Original Hole		4	16,264.0	16,265.0	10/1/2024
		Niobrara, Original Hole		4	16,312.0	16,313.0	10/1/2024
		Niobrara, Original Hole		4	16,363.0	16,364.0	10/1/2024
		Niobrara, Original Hole		4	16,409.0	16,410.0	10/1/2024
		Niobrara, Original Hole		4	16,457.0	16,458.0	10/1/2024
		Niobrara, Original Hole		4	16,506.0	16,507.0	10/1/2024
		Niobrara, Original Hole		4	16,539.0	16,540.0	10/1/2024
		Niobrara, Original Hole		4	16,585.0	16,586.0	10/1/2024
	Niobrara, Original Hole		4	16,633.0	16,634.0	10/1/2024	
	Niobrara, Original Hole		4	16,682.0	16,683.0	10/1/2024	
	Niobrara, Original Hole		4	16,730.0	16,731.0	10/1/2024	
	Niobrara, Original Hole		4	16,779.0	16,780.0	10/1/2024	
	Niobrara, Original Hole		4	16,809.0	16,810.0	9/30/2024	
	Niobrara, Original Hole		4	16,857.0	16,858.0	9/30/2024	
	Niobrara, Original Hole		4	16,905.0	16,906.0	9/30/2024	
	Niobrara, Original Hole		4	16,954.0	16,955.0	9/30/2024	
	Niobrara, Original Hole		4	17,002.0	17,003.0	9/30/2024	
	Niobrara, Original Hole		4	17,051.0	17,052.0	9/30/2024	
	Niobrara, Original Hole		4	17,081.0	17,082.0	9/30/2024	
	Niobrara, Original Hole		4	17,129.0	17,130.0	9/30/2024	
	Niobrara, Original Hole		4	17,177.0	17,178.0	9/30/2024	
	Niobrara, Original Hole		4	17,226.0	17,227.0	9/30/2024	
	Niobrara, Original Hole		4	17,274.0	17,275.0	9/30/2024	
	Niobrara, Original Hole		4	17,323.0	17,324.0	9/30/2024	
	Niobrara, Original Hole		4	17,353.0	17,354.0	9/30/2024	
	Niobrara, Original Hole		4	17,401.0	17,402.0	9/30/2024	
	Niobrara, Original Hole		4	17,449.0	17,450.0	9/30/2024	
	Niobrara, Original Hole		4	17,498.0	17,499.0	9/30/2024	



# P&A Wellbore For State

Well Name: George 09N



Perforation Data					
Linked Zone	Explosive Type	Entered Shot Total	Top (ftKB)	Btm (ftKB)	Date
Niobrara, Original Hole		4	17,550.0	17,551.0	9/30/2024
Niobrara, Original Hole		4	17,595.0	17,596.0	9/30/2024
Niobrara, Original Hole		4	17,625.0	17,626.0	9/30/2024
Niobrara, Original Hole		4	17,673.0	17,674.0	9/30/2024
Niobrara, Original Hole		4	17,718.0	17,719.0	9/30/2024
Niobrara, Original Hole		4	17,770.0	17,771.0	9/30/2024
Niobrara, Original Hole		4	17,818.0	17,819.0	9/30/2024
Niobrara, Original Hole		4	17,867.0	17,868.0	9/30/2024
Niobrara, Original Hole		12	17,898.0	17,900.0	8/6/2024

Stim/Frac Stage			
Zone	Start Date	Top (ftKB)	Btm (ftKB)
Niobrara, Original Hole	10/8/2024	7,827.0	8,070.0
Niobrara, Original Hole	10/7/2024	8,096.0	8,342.0
Niobrara, Original Hole	10/7/2024	8,371.0	8,614.0
Niobrara, Original Hole	10/7/2024	8,643.0	8,886.0
Niobrara, Original Hole	10/7/2024	8,915.0	9,158.0
Niobrara, Original Hole	10/7/2024	9,187.0	9,427.0
Niobrara, Original Hole	10/7/2024	9,460.0	9,703.0
Niobrara, Original Hole	10/6/2024	9,732.0	9,975.0
Niobrara, Original Hole	10/6/2024	10,003.0	10,247.0
Niobrara, Original Hole	10/6/2024	10,276.0	10,519.0
Niobrara, Original Hole	10/6/2024	10,548.0	10,791.0
Niobrara, Original Hole	10/6/2024	10,821.0	11,064.0
Niobrara, Original Hole	10/6/2024	11,093.0	11,336.0
Niobrara, Original Hole	10/5/2024	11,365.0	11,608.0
Niobrara, Original Hole	10/5/2024	11,641.0	11,880.0
Niobrara, Original Hole	10/5/2024	11,909.0	12,147.0
Niobrara, Original Hole	10/4/2024	12,182.0	12,425.0
Niobrara, Original Hole	10/4/2024	12,454.0	12,698.0
Niobrara, Original Hole	10/4/2024	12,726.0	12,968.0
Niobrara, Original Hole	10/4/2024	12,998.0	13,241.0
Niobrara, Original Hole	10/4/2024	13,270.0	13,513.0
Niobrara, Original Hole	10/3/2024	13,545.0	13,785.0
Niobrara, Original Hole	10/3/2024	13,815.0	14,058.0
Niobrara, Original Hole	10/3/2024	14,087.0	14,330.0
Niobrara, Original Hole	10/3/2024	14,359.0	14,603.0
Niobrara, Original Hole	10/2/2024	14,631.0	14,874.0
Niobrara, Original Hole	10/2/2024	14,903.0	15,146.0
Niobrara, Original Hole	10/2/2024	15,176.0	15,419.0
Niobrara, Original Hole	10/2/2024	15,448.0	15,691.0
Niobrara, Original Hole	10/1/2024	15,720.0	15,963.0
Niobrara, Original Hole	10/1/2024	15,992.0	16,235.0
Niobrara, Original Hole	10/1/2024	16,264.0	16,507.0
Niobrara, Original Hole	10/1/2024	16,539.0	16,780.0
Niobrara, Original Hole	9/30/2024	16,809.0	17,052.0
Niobrara, Original Hole	9/30/2024	17,081.0	17,324.0
Niobrara, Original Hole	9/30/2024	17,353.0	17,596.0
Niobrara, Original Hole	9/30/2024	17,625.0	17,868.0
Niobrara, Original Hole	9/29/2024	17,898.0	17,900.0

Other In Hole					
Run Date	Des	Make	OD (in)	Top (ftKB)	Btm (ftKB)
11/5/2024	Packer	FlowCO	4 1/2	7,406.0	7,421.0

Logs			
Date	Type	Depth Top (MD) (ftKB)	Btm (ftKB)

Wellbore Plug Back Total Depths			
Date	Type	Com	PBTD (ftKB)
10/27/2024	Ball Seat	COIL CLEANOUT ABOVE BALLSEAT	17,881
11/27/2024	Float Collar		17,933