

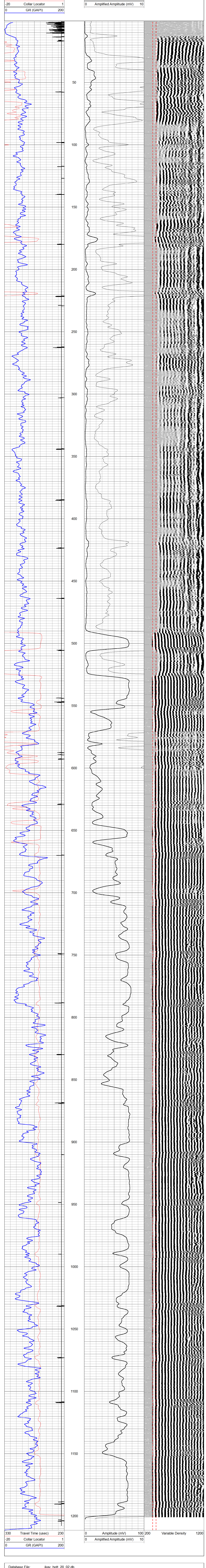
Company: IKAV
Well: HOTT 20-02
Field: IGNACIO BLANCO
County: LA PLATA
State: COLORADO

Location: LA PLATA
Latitude: 37.095940
Longitude: -107.579824
SEC 20 TWP 33N R3E 6W
Ground Level Elevation: K.B. 12'
K.B. 12' Elevation: D.F. 6629'

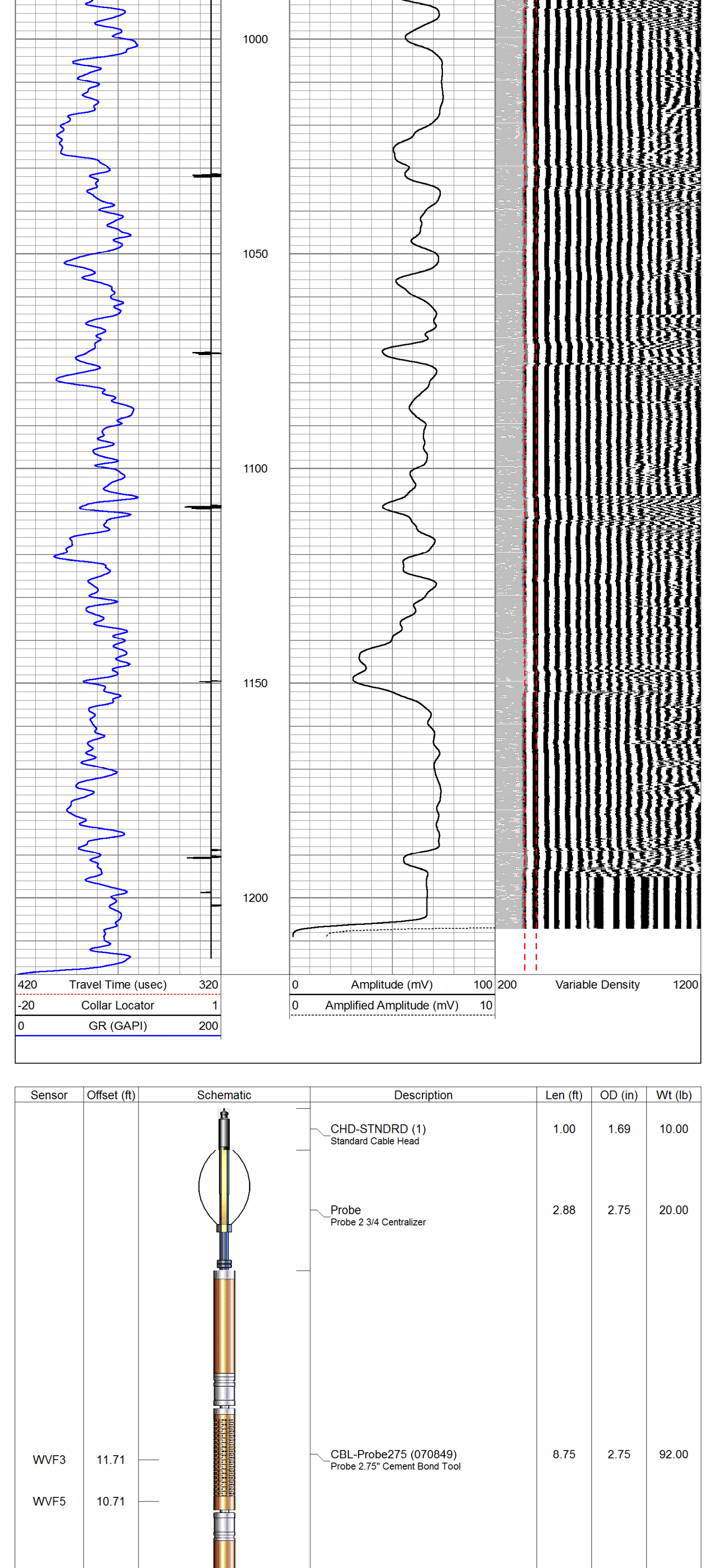
Company: IKAV
Well: HOTT 20-02
Field: IGNACIO BLANCO
County: LA PLATA
State: COLORADO

Location: LA PLATA
Latitude: 37.095940
Longitude: -107.579824
SEC 20 TWP 33N R3E 6W
Ground Level Elevation: K.B. 12'
K.B. 12' Elevation: D.F. 6629'

Database File: ikav_hott_20_02.db
Dataset Pathname: pass9
Presentation Format: cblldg
Dataset Creation: Fri Jan 01 01:04:37 2010 by Log SCH 110223
Charted by: Depth in Feet scaled 1:240



Database File: ikav_hott_20_02.db
Dataset Pathname: pass8
Presentation Format: cblldg
Dataset Creation: Fri Jan 01 00:58:57 2010 by Log SCH 110223
Charted by: Depth in Feet scaled 1:240



Sensor	Offset (ft)	Schematic	Description	Len (ft)	OD (in)	Wt (lb)
			CHD-STNDRD (1) Standard Cable Head	1.00	1.69	10.00
			Probe Probe 2 3/4 Centralizer	2.88	2.75	20.00
WVF3	11.71		CBL-Probe275 (070849) Probe 2.75" Cement Bond Tool	8.75	2.75	92.00
WVF5	10.71		Probe Probe 2 3/4 Centralizer	2.88	2.75	20.00
CCL	3.63		GR.Probe275 (275_070818) Probe Gamma Ray CCL Analog Bottom Det.	4.58	2.75	57.00
GR	0.83					

Dataset: ikav_hott_20_02.db; field/well/run1/pass9
Total Length: 20.08 ft
Total Weight: 199.00 lb
O.D.: 2.75 in

Company: IKAV
Well: HOTT 20-02
Field: IGNACIO BLANCO
County: LA PLATA
State: COLORADO

All interpretations are opinions based on inferences from electrical or other measurements and we cannot and do not guarantee the accuracy or correctness of any interpretation, and we shall not, except in the case of gross or willful negligence on our part, be liable or responsible for any loss, costs, damages, or expenses incurred or sustained by anyone resulting from any interpretation made by any of our officers, agents or employees. These interpretations are also subject to our general terms and conditions set out in our current Price Schedule.

Comments:

THANK YOU FOR CHOOSING THE WIRELINE GROUP
LOG WAS RAN WITH A 12' K.B.
LOG WAS RAN WITH 0 PSI @SURFACE