



## **FIGURES**

**Figure 1: Monitoring Well Soil Analytical Map**

**Figure 2: Monitoring Well Metals in Soil Map**

**Figure 3: Groundwater Analytical Map (04/17/23)**

**Figure 4: Groundwater Elevation Map (04/17/23)**



#### LEGEND

- FORMER WELLHEAD LOCATION
- X APPROXIMATE RELEASE LOCATION
- APPROXIMATE FLOWLINE LOCATION (REMOVED)
- ⊕ APPROXIMATE MONITORING WELL LOCATIONS

#### PARAMETERS

SAMPLE LOCATION
DATE
DEPTH (FEET)
B = BENZENE (mg/kg)
T = TOLUENE (mg/kg)
E = ETHYLBENZENE (mg/kg)
X = TOTAL XYLENES (mg/kg)
G = TPH-GRO (mg/kg)
D = TPH-DRO (mg/kg)
R = TPH-RRO (mg/kg)
1,2,4-TMB = 1,2,4 TRIMETHYLBENZENE (mg/kg)
1,3,5-TMB = 1,3,5 TRIMETHYLBENZENE (mg/kg)
POLYCYCLIC AROMATIC HYDROCARBONS (PAHs) (mg/kg)

mg/kg = MILLIGRAMS PER KILOGRAM

BRL = ALL CONCENTRATIONS BELOW REGULATORY LIMITS

TPH-GRO = TOTAL PETROLEUM HYDROCARBONS - GASOLINE RANGE ORGANICS  
TPH-DRO = TOTAL PETROLEUM HYDROCARBONS - DIESEL RANGE ORGANICS  
TPH-RRO = TOTAL PETROLEUM HYDROCARBONS - RESIDUAL RANGE ORGANICS

#### NOTES:

VALUES PRESENTED WITH A LESS THAN SYMBOL (<) DID NOT CONTAIN CONCENTRATIONS AT OR ABOVE LABORATORY DETECTION LIMITS.

VALUES PRESENTED IN **BOLD** EXCEED COGCC TABLE 915-1 REGULATORY LIMITS.

COGCC = COLORADO OIL AND GAS CONSERVATION COMMISSION

#### MONITORING WELL SOIL ANALYTICAL MAP

CODY #D #3-7  
HISTORICAL RELEASE  
40.255868 / -104.534757  
SW¼ NE¼ SEC.3 T3N R64W 6PM  
WELD COUNTY, COLORADO  
API # 05-123-19037  
REMEDATION # 22154

FIGURE NO.  
1

DRAWN BY:  
KM



**EAGLE**  
ENVIRONMENTAL  
CONSULTING, LLC  
8000 W 44th Ave, Wheat Ridge, CO 80033  
Ph: 303-433-0479 • F: 303-325-5449





#### LEGEND

- FORMER WELLHEAD LOCATION
- X APPROXIMATE RELEASE LOCATION
- APPROXIMATE FLOWLINE LOCATION (REMOVED)
- APPROXIMATE MONITORING WELL LOCATIONS

#### PARAMETERS

SAMPLE LOCATION  
DATE SAMPLE COLLECTED  
APPROXIMATE DEPTH  
Barium = (mg/kg)  
Lead = (mg/kg)  
Selenium = (mg/kg)

mg/kg = MILLIGRAMS PER KILOGRAM

#### NOTES:

VALUES PRESENTED WITH A LESS THAN SYMBOL (<) DID NOT CONTAIN CONCENTRATIONS AT/OR ABOVE LABORATORY REPORTING LIMITS AND/OR MINIMUM DETECTION LIMITS.

VALUES PRESENTED IN **BOLD** EXCEED COGCC TABLE 915-1 REGULATORY LIMITS.

COGCC = COLORADO OIL AND GAS CONSERVATION COMMISSION

#### MONITORING WELL METALS IN SOIL MAP

CODY #D #3-7  
HISTORICAL RELEASE  
40.255868 / -104.534757  
SW¼ NE¼ SEC.3 T3N R64W 6PM  
WELD COUNTY, COLORADO  
API # 05-123-19037  
REMEDATION # 22154

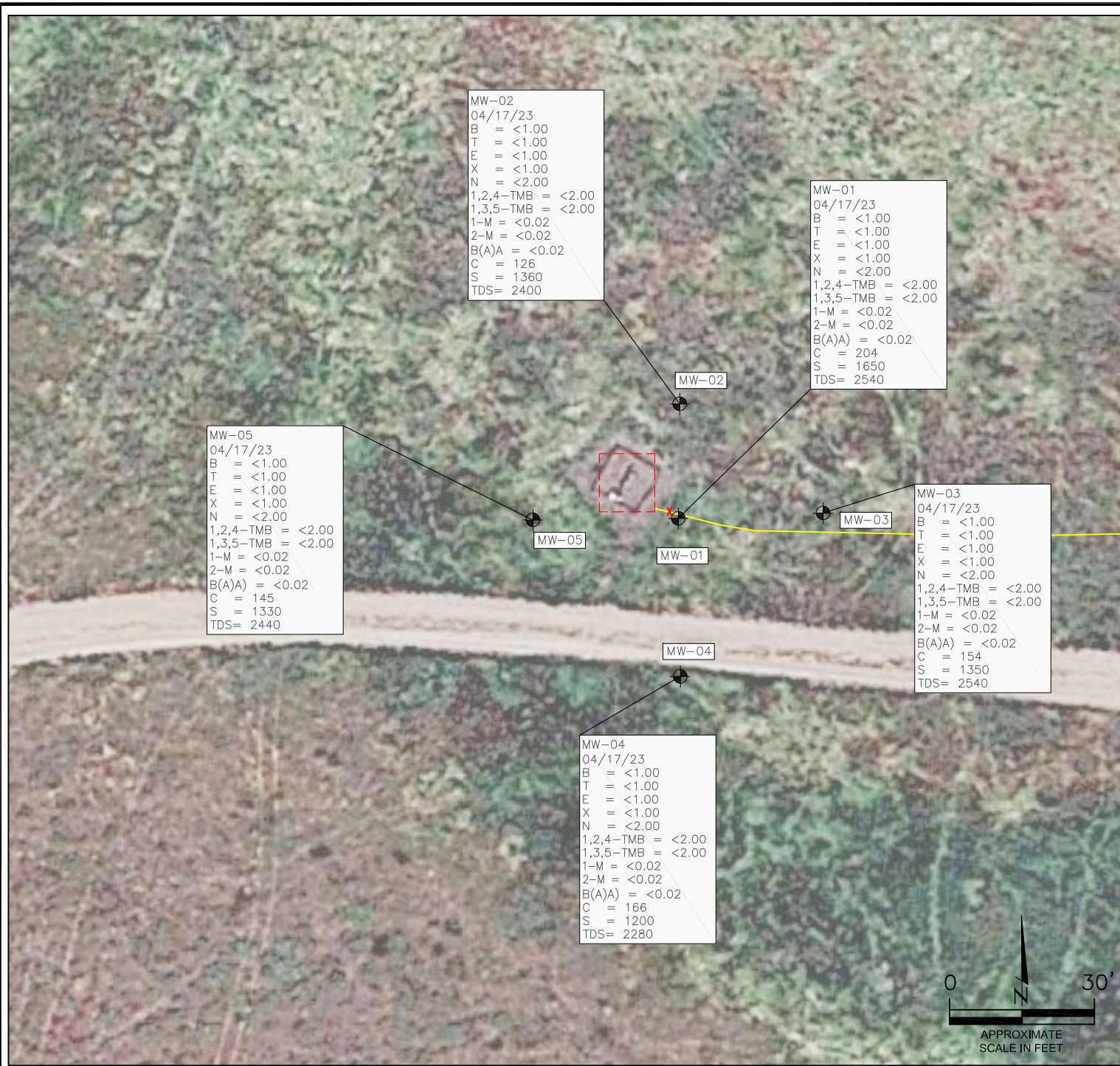
FIGURE NO.  
2

DRAWN BY:  
KM



**EAGLE**  
ENVIRONMENTAL  
CONSULTING, LLC  
8000 W 44th Ave, Wheat Ridge, CO 80033  
Ph: 303-433-0479 • F: 303-325-5449





#### LEGEND

- FORMER WELLHEAD LOCATION
- X APPROXIMATE RELEASE LOCATION
- APPROXIMATE FLOWLINE LOCATION (REMOVED)
- ⊕ APPROXIMATE MONITORING WELL LOCATIONS

#### PARAMETERS

##### GROUNDWATER SAMPLE LOCATION

##### DATE

B = BENZENE (µg/L)  
T = TOLUENE (µg/L)  
E = ETHYLBENZENE (µg/L)  
X = TOTAL XYLENES (µg/L)  
N = NAPHTHALENE (µg/L)  
1,2,4-TMB = 1,2,4-TRIMETHYLBENZENE (µg/L)  
1,3,5-TMB = 1,3,5-TRIMETHYLBENZENE (µg/L)  
1-M = 1-METHYLNAPHTHALENE (µg/L)  
2-M = 2-METHYLNAPHTHALENE (µg/L)  
B(A)A = BENZO(A)ANTHRACENE (µg/L)  
C = CHLORIDE (mg/L)  
S = SULFATE (mg/L)  
TDS = TOTAL DISSOLVED SOLIDS (mg/L)

µg/L = MICROGRAMS PER LITER

mg/L = MILLIGRAMS PER LITER

##### NOTES:

VALUES PRESENTED WITH A LESS THAN SYMBOL (<) DID NOT CONTAIN CONCENTRATIONS AT OR ABOVE THE LABORATORY REPORTING LIMIT.

THE INORGANIC GROUNDWATER PARAMETERS IN MW-02 WERE USED IN THE DETERMINATION OF LOCAL BACKGROUND LEVELS AT THE SITE.

VALUES PRESENTED IN **BOLD** EXCEED THE COGCC TABLE 915--1 REGULATORY LIMITS AND/OR COGCC NARRATIVE GROUNDWATER QUALITY STANDARDS\*.

\*COGCC REGULATORY LIMITS IN GROUNDWATER HAVE NOT BEEN ESTABLISHED FOR 1-METHYLNAPHTHALENE AND 2-METHYLNAPHTHALENE. COGCC IMPLEMENTS A NARRATIVE GROUNDWATER QUALITY STANDARD TAKEN FROM THE ENVIRONMENTAL PROTECTION AGENCY (EPA) REGIONAL SCREENING LEVELS (RSLs) FOR TAPWATER, AS INCORPORATED BY REFERENCE IN RULE 901.B, TABLES FOR TARGET RISK ("TR")=1x10<sup>-6</sup> AND TARGET HAZARD QUOTIENT ("THQ")=0.1. THE EPA RSL FOR TAPWATER, AND RESULTANT NARRATIVE GROUNDWATER QUALITY STANDARDS ARE 1.1 µg/L FOR 1-METHYLNAPHTHALENE AND 3.6 µg/L FOR 2-METHYLNAPHTHALENE.

COGCC = COLORADO OIL AND GAS CONSERVATION COMMISSION

#### GROUNDWATER ANALYTICAL MAP

(04/17/23)

CODY #D #3-7

HISTORICAL RELEASE

40.255868 / -104.534757

SW¼ NE¼ SEC.3 T3N R64W 6PM

WELD COUNTY, COLORADO

API # 05-123-19037

REMEDIATION # 22154

FIGURE NO.

3

DRAWN BY:

KM



**EAGLE**  
ENVIRONMENTAL  
CONSULTING, LLC

8000 W 44th Ave, Wheat Ridge, CO 80033  
Ph: 303-433-0479 • F: 303-325-5449





# LEGEND

- FORMER WELLHEAD LOCATION
- X APPROXIMATE RELEASE LOCATION
- APPROXIMATE FLOWLINE LOCATION (REMOVED)
- ⊕ APPROXIMATE MONITORING WELL LOCATIONS
- (91.45) RELATIVE GROUNDWATER ELEVATION (FT.)
- INFERRED GROUNDWATER ELEVATION CONTOUR (FT.)
- APPROXIMATE GROUNDWATER FLOW DIRECTION

FT. = FEET

NOTE:  
GROUNDWATER ELEVATION DATA WAS COLLECTED ON  
04/17/23.

HYDRAULIC GRADIENT (MW-02 TO MW-05): 0.0162 FT/FT

GROUNDWATER ELEVATION MAP  
(04/17/23)  
CODY #D #3-7  
HISTORICAL RELEASE  
40.255868 / -104.534757  
SW¼ NE¼ SEC.3 T3N R64W 6PM  
WELD COUNTY, COLORADO  
API # 05-123-19037  
REMEDATION # 22154

FIGURE NO.  
4

DRAWN BY:  
KM



**EAGLE**  
ENVIRONMENTAL  
CONSULTING, LLC  
8000 W 44th Ave, Wheat Ridge, CO 80033  
Ph: 303-433-0479 • F: 303-325-5449



## **TABLES**

**Table 1: Soil Analytical Results Summary**

**Table 2: Groundwater Analytical Results Summary**

**Table 3: Inorganic Groundwater Parameters Summary**

**Table 4: Groundwater Elevation Summary**

TABLE 1  
SOIL ANALYTICAL RESULTS SUMMARY  
CODY #D #3-7  
HISTORICAL RELEASE  
40.255868 / -104.534757  
SW¼ NE¼ SEC.3 T3N R64W 6PM  
WELD COUNTY, COLORADO  
API # 05-123-19037  
REMEDATION # 22154

Sample Location					WH-FS-01 @ 6'	Background-01 @ 3'	FL-SS-01 @ 3'	FL-SS-12 @ 3'
(Latitude / Longitude)					(40.255889 / -104.534790)	(40.255778 / -104.534808)	(40.255840 / -104.530069)	(40.255868 / -104.534757)
Sample Date					4/15/2022	4/15/2022	5/23/2022	5/24/2022
Sample Depth					6'	3'	3'	3'
PID Reading (ppm-v)					0.9	0.1	1.4	413.0
Regulatory Limits								
Chemical of Concern	Units	COGCC Table 915-1 RSSLs	COGCC Table 915-1 GSSLs	Local Clean-Up Level				
VOCs								
Benzene	mg/kg	1.2	0.0026	--	<0.00200	NA	<0.00200	0.216*
Toluene	mg/kg	490	0.69	--	<0.00200	NA	<0.00200	0.590
Ethylbenzene	mg/kg	5.8	0.78	--	<0.00200	NA	<0.00200	0.140
Total Xylenes	mg/kg	58	9.9	--	<0.00200	NA	<0.00200	3.58
1,2,4-Trimethylbenzene	mg/kg	30	0.0081	--	<0.00200	NA	<0.00200	0.324*
1,3,5-Trimethylbenzene	mg/kg	27	0.0087	--	<0.00200	NA	<0.00200	0.164*
Total Petroleum Hydrocarbons								
TPH-GRO	mg/kg	500	--	--	<0.200	NA	<0.200	26.5
TPH-DRO	mg/kg	500	--	--	<25.0	NA	<25.0	184
TPH-RRO	mg/kg	500	--	--	<100	NA	<100	<100
Polycyclic Aromatics Hydrocarbons								
1-Methyl-naphthalene	mg/kg	18	0.006	--	<0.00067	NA	<0.00335	0.693*
2-Methyl-naphthalene	mg/kg	24	0.019	--	<0.00067	NA	<0.00335	1.47*
Acenaphthene	mg/kg	360	0.55	--	<0.00067	NA	<0.00335	0.0783
Anthracene	mg/kg	1800	5.8	--	<0.00067	NA	<0.00335	0.00152
Benzo(a)-anthracene	mg/kg	1.1	0.011	--	<0.00067	NA	<0.00335	0.0146*
Benzo(a)-pyrene	mg/kg	0.11	0.24	--	<0.00067	NA	<0.00335	<0.00067
Benzo(b)-fluoranthene	mg/kg	1.1	0.3	--	<0.00067	NA	<0.00335	<0.00067
Benzo(k)-fluoranthene	mg/kg	11	2.9	--	<0.00067	NA	<0.00335	0.000712
Chrysene	mg/kg	110	9	--	<0.00067	NA	<0.00335	0.0151
Dibenzo(a,h)-anthracene	mg/kg	0.11	0.096	--	<0.00067	NA	<0.00335	<0.00067
Fluoranthene	mg/kg	240	8.9	--	<0.00067	NA	<0.00335	0.000863
Fluorene	mg/kg	240	0.54	--	<0.00067	NA	<0.00335	0.111
Indeno(1,2,3-cd)-pyrene	mg/kg	1.1	0.98	--	<0.00067	NA	<0.00335	<0.00067
Naphthalene	mg/kg	2	0.0038	--	<0.00067	NA	<0.00335	0.309*
Pyrene	mg/kg	180	1.3	--	<0.00067	NA	<0.00335	0.0106
Soil Suitability (Inorganics)								
Boron	mg/L	2	--	--	2.21	2.46	<0.101	1.18
pH	standard unit	6-8.3	--	--	8.09	NA	8.27	8.31
Sodium Adsorption Ratio (SAR)	--	<6	--	--	8.06	9.93	0.0859	3.07
Specific Conductance (EC)	mmhos/cm	<4	--	--	5.47	6.50	0.218	1.76
Metals								
Arsenic	mg/kg	0.68***	0.29***	2.13***	NA	NA	NA	2.01***
Barium	mg/kg	15000	82	--	NA	NA	NA	123*
Cadmium	mg/kg	71	0.38	--	NA	NA	NA	0.222
Copper	mg/kg	3100	46	--	NA	NA	NA	14.2
Lead	mg/kg	400	14	--	NA	NA	NA	15.7*
Nickel	mg/kg	1500	26	--	NA	NA	NA	10.9
Selenium	mg/kg	390	0.26	--	NA	NA	NA	0.304*
Silver	mg/kg	390	0.8	--	NA	NA	NA	0.0442
Zinc	mg/kg	23000	370	--	NA	NA	NA	57.4
Hexavalent Chromium	mg/kg	0.3**	0.00067**	0.1 to 1.0**	NA	NA	NA	<0.244**
COGCC = Colorado Oil and Gas Conservation Commission mg/kg = milligrams per kilogram mmhos/cm = millimhos per centimeter PID = Photoionization Detector ppm-v = parts per million by volume mg/L = milligrams per liter SAR = Sodium Adsorption Ratio Notes: Values presented in <b>BOLD</b> exceed COGCC Table 915-1 Regulatory Limits. Values presented with asterisk (*) exceed COGCC Table 915-1 GSSLs **Achievable practical quantitative limits for Hexavalent Chromium in soils is in the range of 0.1 to 1 mg/kg. ***Arsenic is naturally occurring in Colorado. The Local Clean-up Level (2.13 mg/kg) is 1.25*Background (1.70 mg/kg).								

TABLE 1  
SOIL ANALYTICAL RESULTS SUMMARY  
CODY #D #3-7  
HISTORICAL RELEASE  
40.255868 / -104.534757  
SW¼ NE¼ SEC.3 T3N R64W 6PM  
WELD COUNTY, COLORADO  
API # 05-123-19037  
REMEDATION # 22154

Sample Location	Background-02 @ 2'	MW-01 @ 2.5-4'	MW-02 @ 2.5-4'	MW-03 @ 2.5-4'
(Latitude / Longitude)	(40.255891 / -104.530185)	(40.255857 / -104.534752)	(40.255928 / -104.534738)	(40.255849 / -104.534634)
Sample Date	5/23/2022	4/13/2023	4/13/2023	4/13/2023
Sample Depth	2'	2.5-4'	2.5-4'	2.5-4'
PID Reading (ppm-v)	1.1	9.5	4.4	3.5
Regulatory Limits				
Chemical of Concern	Units	COGCC Table 915-1 RSSLs	COGCC Table 915-1 GSSLs	Local Clean-Up Level
<b>VOCs</b>				
Benzene	mg/kg	1.2	0.0026	--
Toluene	mg/kg	490	0.69	--
Ethylbenzene	mg/kg	5.8	0.78	--
Total Xylenes	mg/kg	58	9.9	--
1,2,4-Trimethylbenzene	mg/kg	30	0.0081	--
1,3,5-Trimethylbenzene	mg/kg	27	0.0087	--
<b>Total Petroleum Hydrocarbons</b>				
TPH-GRO	mg/kg	500	--	--
TPH-DRO	mg/kg	500	--	--
TPH-RRO	mg/kg	500	--	--
<b>Polycyclic Aromatics Hydrocarbons</b>				
1-Methyl-naphthalene	mg/kg	18	0.006	--
2-Methyl-naphthalene	mg/kg	24	0.019	--
Acenaphthene	mg/kg	360	0.55	--
Anthracene	mg/kg	1800	5.8	--
Benzo(a)-anthracene	mg/kg	1.1	0.011	--
Benzo(a)-pyrene	mg/kg	0.11	0.24	--
Benzo(b)-fluoranthene	mg/kg	1.1	0.3	--
Benzo(k)-fluoranthene	mg/kg	11	2.9	--
Chrysene	mg/kg	110	9	--
Dibenzo(a,h)-anthracene	mg/kg	0.11	0.096	--
Fluoranthene	mg/kg	240	8.9	--
Fluorene	mg/kg	240	0.54	--
Indeno(1,2,3-cd)-pyrene	mg/kg	1.1	0.98	--
Naphthalene	mg/kg	2	0.0038	--
Pyrene	mg/kg	180	1.3	--
<b>Soil Suitability (Inorganics)</b>				
Boron	mg/L	2	--	--
pH	standard unit	6-8.3	--	--
Sodium Adsorption Ratio (SAR)	--	<6	--	--
Specific Conductance (EC)	mmhos/cm	<4	--	--
<b>Metals</b>				
Arsenic	mg/kg	0.68***	0.29***	2.13***
Barium	mg/kg	15000	82	--
Cadmium	mg/kg	71	0.38	--
Copper	mg/kg	3100	46	--
Lead	mg/kg	400	14	--
Nickel	mg/kg	1500	26	--
Selenium	mg/kg	390	0.26	--
Silver	mg/kg	390	0.8	--
Zinc	mg/kg	23000	370	--
Hexavalent Chromium	mg/kg	0.3**	0.00067**	0.1 to 1.0**
COGCC = Colorado Oil and Gas Conservation Commission mg/kg = milligrams per kilogram mmhos/cm = millimhos per centimeter PID = Photoionization Detector ppm-v = parts per million by volume mg/L = milligrams per liter SAR = Sodium Adsorption Ratio Notes: Values presented in <b>BOLD</b> exceed COGCC Table 915-1 Regulatory Limits. Values presented with asterisk (*) exceed COGCC Table 915-1 GSSLs **Achievable practical quantitative limits for Hexavalent Chromium in soils is in the range of 0.1 to 1 mg/kg. ***Arsenic is naturally occurring in Colorado. The Local Clean-up Level (2.13 mg/kg) is 1.25*Background (1.70 mg/kg).				



TABLE 1  
SOIL ANALYTICAL RESULTS SUMMARY  
CODY #D #3-7  
HISTORICAL RELEASE  
40.255868 / -104.534757  
SW¼ NE¼ SEC.3 T3N R64W 6PM  
WELD COUNTY, COLORADO  
API # 05-123-19037  
REMEDATION # 22154

Sample Location					MW-04 @ 2.5-4'	MW-05 @ 2.5-4'	Background-01 @ 2.5-4'	Background-02 @ 2.5-4'
(Latitude / Longitude)					(40.255776 / -104.534763)	(40.255864 / -104.534865)	(40.255933 / -104.534956)	(40.255876 / -104.534986)
Sample Date					4/13/2023	4/13/2023	4/13/2023	4/13/2023
Sample Depth					2.5-4'	2.5-4'	2.5-4'	2.5-4'
PID Reading (ppm-v)					3.3	2.1	2.1	2.6
Regulatory Limits								
Chemical of Concern	Units	COGCC Table 915-1 RSSLs	COGCC Table 915-1 GSSLs	Local Clean-Up Level				
<b>VOCs</b>								
Benzene	mg/kg	1.2	0.0026	--	<0.00200	<0.00200	NA	NA
Toluene	mg/kg	490	0.69	--	<0.00200	<0.00200	NA	NA
Ethylbenzene	mg/kg	5.8	0.78	--	<0.00200	<0.00200	NA	NA
Total Xylenes	mg/kg	58	9.9	--	<0.00200	<0.00200	NA	NA
1,2,4-Trimethylbenzene	mg/kg	30	0.0081	--	<0.00200	<0.00200	NA	NA
1,3,5-Trimethylbenzene	mg/kg	27	0.0087	--	<0.00200	<0.00200	NA	NA
<b>Total Petroleum Hydrocarbons</b>								
TPH-GRO	mg/kg	500	--	--	<0.200	<0.200	NA	NA
TPH-DRO	mg/kg	500	--	--	<25.0	<25.0	NA	NA
TPH-RRO	mg/kg	500	--	--	<100	<100	NA	NA
<b>Polycyclic Aromatics Hydrocarbons</b>								
1-Methyl-naphthalene	mg/kg	18	0.006	--	<0.00201	<0.00201	NA	NA
2-Methyl-naphthalene	mg/kg	24	0.019	--	<0.00201	<0.00201	NA	NA
Acenaphthene	mg/kg	360	0.55	--	<0.00067	<0.00067	NA	NA
Anthracene	mg/kg	1800	5.8	--	<0.00067	<0.00067	NA	NA
Benzo(a)-anthracene	mg/kg	1.1	0.011	--	<0.00067	<0.00067	NA	NA
Benzo(a)-pyrene	mg/kg	0.11	0.24	--	<0.00067	<0.00067	NA	NA
Benzo(b)-fluoranthene	mg/kg	1.1	0.3	--	<0.00067	<0.00067	NA	NA
Benzo(k)-fluoranthene	mg/kg	11	2.9	--	<0.00067	<0.00067	NA	NA
Chrysene	mg/kg	110	9	--	<0.00067	<0.00067	NA	NA
Dibenzo(a,h)-anthracene	mg/kg	0.11	0.096	--	<0.00067	<0.00067	NA	NA
Fluoranthene	mg/kg	240	8.9	--	<0.00067	<0.00067	NA	NA
Fluorene	mg/kg	240	0.54	--	<0.00067	<0.00067	NA	NA
Indeno(1,2,3-cd)-pyrene	mg/kg	1.1	0.98	--	<0.00067	<0.00067	NA	NA
Naphthalene	mg/kg	2	0.0038	--	<0.00201	<0.00201	NA	NA
Pyrene	mg/kg	180	1.3	--	<0.00067	<0.00067	NA	NA
<b>Soil Suitability (Inorganics)</b>								
Boron	mg/L	2	--	--	NA	NA	NA	NA
pH	standard unit	6-8.3	--	--	NA	NA	NA	NA
Sodium Adsorption Ratio (SAR)	--	<6	--	--	NA	NA	NA	NA
Specific Conductance (EC)	mmhos/cm	<4	--	--	NA	NA	NA	NA
<b>Metals</b>								
Arsenic	mg/kg	0.68***	0.29***	2.13***	NA	NA	NA	NA
Barium	mg/kg	15000	82	--	40.8	56.9	69.5	57.8
Cadmium	mg/kg	71	0.38	--	NA	NA	NA	NA
Copper	mg/kg	3100	46	--	NA	NA	NA	NA
Lead	mg/kg	400	14	--	<9.65	<8.96	<9.51	<9.30
Nickel	mg/kg	1500	26	--	NA	NA	NA	NA
Selenium	mg/kg	390	0.26	--	0.110	0.168	0.112	0.0976
Silver	mg/kg	390	0.8	--	NA	NA	NA	NA
Zinc	mg/kg	23000	370	--	NA	NA	NA	NA
Hexavalent Chromium	mg/kg	0.3**	0.00067**	0.1 to 1.0**	NA	NA	NA	NA
COGCC = Colorado Oil and Gas Conservation Commission mg/kg = milligrams per kilogram mmhos/cm = millimhos per centimeter PID = Photoionization Detector ppm-v = parts per million by volume mg/L = milligrams per liter SAR = Sodium Adsorption Ratio Notes: Values presented in <b>BOLD</b> exceed COGCC Table 915-1 Regulatory Limits. Values presented with asterisk (*) exceed COGCC Table 915-1 GSSLs **Achievable practical quantitative limits for Hexavalent Chromium in soils is in the range of 0.1 to 1 mg/kg. ***Arsenic is naturally occurring in Colorado. The Local Clean-up Level (2.13 mg/kg) is 1.25*Background (1.70 mg/kg).								

TABLE 1  
SOIL ANALYTICAL RESULTS SUMMARY  
CODY #D #3-7  
HISTORICAL RELEASE  
40.255868 / -104.534757  
SW¼ NE¼ SEC.3 T3N R64W 6PM  
WELD COUNTY, COLORADO  
API # 05-123-19037  
REMEDIATION # 22154

Sample Location				Background-03 @ 2.5-4'	
(Latitude / Longitude)				(40.255778 / -104.534943)	
Sample Date				4/13/2023	
Sample Depth				2.5-4'	
PID Reading (ppm-v)				2.1	
Regulatory Limits					
Chemical of Concern	Units	COGCC Table 915-1 RSSLs	COGCC Table 915-1 GSSLs	Local Clean-Up Level	
VOCs					
Benzene	mg/kg	1.2	0.0026	--	NA
Toluene	mg/kg	490	0.69	--	NA
Ethylbenzene	mg/kg	5.8	0.78	--	NA
Total Xylenes	mg/kg	58	9.9	--	NA
1,2,4-Trimethylbenzene	mg/kg	30	0.0081	--	NA
1,3,5-Trimethylbenzene	mg/kg	27	0.0087	--	NA
Total Petroleum Hydrocarbons					
TPH-GRO	mg/kg	500	--	--	NA
TPH-DRO	mg/kg	500	--	--	NA
TPH-RRO	mg/kg	500	--	--	NA
Polycyclic Aromatics Hydrocarbons					
1-Methyl-naphthalene	mg/kg	18	0.006	--	NA
2-Methyl-naphthalene	mg/kg	24	0.019	--	NA
Acenaphthene	mg/kg	360	0.55	--	NA
Anthracene	mg/kg	1800	5.8	--	NA
Benzo(a)-anthracene	mg/kg	1.1	0.011	--	NA
Benzo(a)-pyrene	mg/kg	0.11	0.24	--	NA
Benzo(b)-fluoranthene	mg/kg	1.1	0.3	--	NA
Benzo(k)-fluoranthene	mg/kg	11	2.9	--	NA
Chrysene	mg/kg	110	9	--	NA
Dibenzo(a,h)-anthracene	mg/kg	0.11	0.096	--	NA
Fluoranthene	mg/kg	240	8.9	--	NA
Fluorene	mg/kg	240	0.54	--	NA
Indeno(1,2,3-cd)-pyrene	mg/kg	1.1	0.98	--	NA
Naphthalene	mg/kg	2	0.0038	--	NA
Pyrene	mg/kg	180	1.3	--	NA
Soil Suitability (Inorganics)					
Boron	mg/L	2	--	--	NA
pH	standard unit	6-8.3	--	--	NA
Sodium Adsorption Ratio (SAR)	--	<6	--	--	NA
Specific Conductance (EC)	mmhos/cm	<4	--	--	NA
Metals					
Arsenic	mg/kg	0.68***	0.29***	2.13***	NA
Barium	mg/kg	15000	82	--	29.5
Cadmium	mg/kg	71	0.38	--	NA
Copper	mg/kg	3100	46	--	NA
Lead	mg/kg	400	14	--	<9.05
Nickel	mg/kg	1500	26	--	NA
Selenium	mg/kg	390	0.26	--	<0.0905
Silver	mg/kg	390	0.8	--	NA
Zinc	mg/kg	23000	370	--	NA
Hexavalent Chromium	mg/kg	0.3**	0.00067**	0.1 to 1.0**	NA
COGCC = Colorado Oil and Gas Conservation Commission		VOCs = Volatile Organic Compounds		NA - Not Analyzed	
mg/kg = milligrams per kilogram		RSSLs = Residential Soil Screening Levels			
mmhos/cm = millimhos per centimeter		GSSLs = Protection of Groundwater Soil Screening Levels			
PID = Photoionization Detector		TPH-GRO = Total Petroleum Hydrocarbons - Gasoline Range Organics			
ppm-v = parts per million by volume		TPH-DRO = Total Petroleum Hydrocarbons - Diesel Range Organics			
mg/L = milligrams per liter		TPH-RRO = Total Petroleum Hydrocarbons - Residual Range Organics			
SAR = Sodium Adsorption Ratio					
Notes: Values presented in <b>BOLD</b> exceed COGCC Table 915-1 Regulatory Limits. Values presented with asterisk (*) exceed COGCC Table 915-1 GSSLs					
***Achievable practical quantitative limits for Hexavalent Chromium in soils is in the range of 0.1 to 1 mg/kg.					
**Arsenic is naturally occurring in Colorado. The Local Clean-up Level (2.13 mg/kg) is 1.25*Background (1.70 mg/kg).					



TABLE 2  
GROUNDWATER ANALYTICAL RESULTS SUMMARY  
CODY #D #3-7  
HISTORICAL RELEASE  
40.255868 / -104.534757  
SW¼ NE¼ SEC.3 T3N R64W 6PM  
WELD COUNTY, COLORADO  
API # 05-123-19037  
REMEDATION # 22154

Sample Location (Latitude/Longitude)	Date	Benzene (µg/L)	Toluene (µg/L)	Ethylbenzene (µg/L)	Total Xylenes (µg/L)	Naphthalene (µg/L)	1,2,4- trimethylbenzene (µg/L)	1,3,5- trimethylbenzene (µg/L)	1-Methyl- naphthalene (µg/L)	2-Methyl- naphthalene (µg/L)	Benzo(a)anthracene (µg/L)
<b>COGCC Table 915-1 Regulatory Limits (µg/L)</b>		<b>5</b>	<b>560</b>	<b>700</b>	<b>1400</b>	<b>140</b>	<b>67</b>	<b>67</b>	<b>--</b>	<b>--</b>	<b>--</b>
<b>COGCC Narrative Groundwater Quality Standards* (µg/L)</b>		<b>--</b>	<b>--</b>	<b>--</b>	<b>--</b>	<b>--</b>	<b>--</b>	<b>--</b>	<b>1.1*</b>	<b>3.6*</b>	<b>0.16</b>
MW-01 (40.255857 / -104.534752)	04/17/23	<1.00	<1.00	<1.00	<1.00	<2.00	<2.00	<2.00	<0.02	<0.02	<0.02
MW-02 (40.255928 / -104.534738)	04/17/23	<1.00	<1.00	<1.00	<1.00	<2.00	<2.00	<2.00	<0.02	<0.02	<0.02
MW-03 (40.255849 / -104.534634)	04/17/23	<1.00	<1.00	<1.00	<1.00	<2.00	<2.00	<2.00	<0.02	<0.02	<0.02
MW-04 (40.255776 / -104.534763)	04/17/23	<1.00	<1.00	<1.00	<1.00	<2.00	<2.00	<2.00	<0.02	<0.02	<0.02
MW-05 (40.255864 / -104.534865)	04/17/23	<1.00	<1.00	<1.00	<1.00	<2.00	<2.00	<2.00	<0.02	<0.02	<0.02

COGCC = Colorado Oil and Gas Conservation Commission      NS - Not Sampled      NOP - Not on Plan

µg/L - micrograms per liter

Notes:

\*COGCC regulatory limits in groundwater have not been established for 1-methylnaphthalene and 2-methylnaphthalene. COGCC implements a narrative groundwater quality standard taken from the Environmental Protection Agency (EPA) Regional Screening Levels (RSLs) for Tapwater, as incorporated by reference in Rule 901.b, tables for Target Risk ("TR") =  $1 \times 10^{-6}$  and Target Hazard Quotient ("THQ")=0.1. The EPA RSL for Tapwater, and resultant narrative groundwater quality standard is 1.1 µg/L for 1-methylnaphthalene and 3.6 µg/L for 2-methylnaphthalene.

Values presented with a less than symbol (<) indicate concentrations were not observed at or above the laboratory reporting limit.

Values presented in **BOLD** contained concentrations exceeding applicable Quality Standards.

TABLE 3  
 INORGANICS GROUNDWATER PARAMETERS SUMMARY  
 CODY #D #3-7  
 HISTORICAL RELEASE  
 40.255868 / -104.534757  
 SW¼ NE¼ SEC.3 T3N R64W 6PM  
 WELD COUNTY, COLORADO  
 API # 05-123-19037  
 REMEDIATION # 22154

Sample Location (Latitude/Longitude)	Date	Chlorides (mg/L)	Sulfates (mg/L)	Total Dissolved Solids (mg/L)
<b>COGCC Table 915-1 Regulatory Limits (mg/L)</b>		<b>250</b>	<b>1.25 x Local Background (1700)</b>	<b>1.25 x Local Background (3000)</b>
MW-01 (40.255857 / -104.534752)	04/17/23	204	1650	2540
MW-02 (40.255928 / -104.534738)	04/17/23	126	1360	2400
MW-03 (40.255849 / -104.534634)	04/17/23	154	1350	2540
MW-04 (40.255776 / -104.534763)	04/17/23	166	1200	2280
MW-05 (40.255864 / -104.534865)	04/17/23	145	1330	2440
COGCC = Colorado Oil and Gas Conservation Commission mg/L - milligrams per liter  Note: The Inorganic Groundwater Parameters from monitoring well MW-02 were used in the determination of "local background" levels for sulfate and total dissolved solids at the site. Local "regulatory limit" (1.25*local background) presented (in parentheses).  Values presented in <b>bold</b> typeface exceed their respective COGCC - Regulatory Limits (Table 915-1).				



**TABLE 4**  
**GROUNDWATER ELEVATION SUMMARY**  
**CODY #D #3-7**  
**HISTORICAL RELEASE**  
**40.255868 / -104.534757**  
**SW¼ NE¼ SEC.3 T3N R64W 6PM**  
**WELD COUNTY, COLORADO**  
**API # 05-123-19037**  
**REMEDATION # 22154**

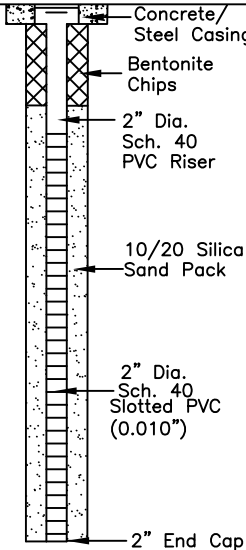
Sample Location (Latitude/Longitude)	Date	TOC Elevation (feet)	Depth to Groundwater from TOC (feet)	Relative Groundwater Elevation (feet)
MW-01 (40.255857 / -104.534752)	04/17/23	99.34	3.17	96.17
MW-02 (40.255928 / -104.534738)	04/17/23	99.84	3.47	96.37
MW-03 (40.255849 / -104.534634)	04/17/23	100.00	3.54	96.46
MW-04 (40.255776 / -104.534763)	04/17/23	99.39	3.53	95.86
MW-05 (40.255864 / -104.534865)	04/17/23	99.04	3.27	95.77
NOTES: TOC - top of casing				



## **ATTACHMENT A**

### **Soil Boring Logs / Well Completion Diagrams**



DEPTH (FT)	LITHOLOGY	SAMPLE				OVM/OVA (PPM)	BLOW COUNT (per 0.5 FT)	DEPTH (FT)	WELL CONSTRUCTION DETAIL	COMMENTS
	DESCRIPTION	GRAPHIC LOG	TYPE	NUMBER	RECOVERY %					
0	(0-7.5') clayey SAND - brown, moist to wet, loose, medium grained, moderately-graded with ~40% clay, N/O, N/S	SC	DP	1	90	8.6	N/A			
@~4' - wet						9.5				
5		DP	2	80	6.6	7.2	N/A	5		
(7.5-15') silty SAND - brown, wet, loose, fine to medium grained, poorly-graded with ~30% silt, N/O, N/S						6.6				
10		SM	DP	3	100	5.6	N/A	10		
						5.6				
15	BoB @ 15'							15		
20								20		
25								25		
30										

HA - Hand Auger  
 DP - Direct Push  
 HC - Hydrocarbon  
 BoB - Bottom of Boring  
 N/O - no odor  
 N/S - no staining  
 TOC - top of casing  
 bgs - below ground surface

START/COMPLETION DATE: 04/13/23

SAND PACK INTERVAL (FEET): 2.5-13

PROJECT: CODY #D #3-7

BENTONITE/GROUT INTERVAL (FEET): 0.5-2.5

LOGGED BY: K. MARCUM

WELL SCREEN INTERVAL (FEET): 3-13

DRILLING COMPANY/EQUIPMENT: EAGLE/GEOPROBE

WELL DIAMETER (INCHES): 2

BORING DEPTH (FEET): 15

WELL DEPTH (FEET): 13

PID INSTRUMENT: Ion Tiger XLT - PID #17

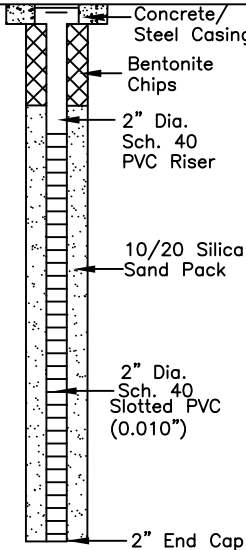
TIME STARTED/COMPLETED: 0945/1000

SAMPLE COLLECTION DEPTH (FT.)/TIME: 2.5-4/0950



**EAGLE**  
 ENVIRONMENTAL  
 CONSULTING, LLC

8000 W 44th Ave., Wheat Ridge, CO 80033  
 Ph: 303-433-0479 • F: 303-325-5449

DEPTH (FT)	LITHOLOGY	SAMPLE				OVM/OVA (PPM)	BLOW COUNT (per 0.5 FT)	DEPTH (FT)	WELL CONSTRUCTION DETAIL	COMMENTS
	DESCRIPTION	GRAPHIC LOG	TYPE	NUMBER	RECOVERY %					
0	(0-7.5') clayey SAND - brown, moist to wet, loose, medium grained, moderately-graded with ~40% clay, N/O, N/S	SC	DP	1	90	4.1	N/A			
@~4' - wet						4.4				
5		DP	2	80	80	3.1	N/A	5		
(7.5-15') silty SAND - brown, wet, fine to medium grained, poorly graded, loose, with ~30% silt, N/O, N/S						2.9				
10		SM	DP	3	100	2.5	N/A	10		
						2.4				
15	BoB @ 15'							15		
20								20		
25								25		
30										

HA - Hand Auger  
 DP - Direct Push  
 HC - Hydrocarbon  
 BoB - Bottom of Boring  
 N/O - no odor  
 N/S - no staining  
 TOC - top of casing  
 bgs - below ground surface

START/COMPLETION DATE: 04/13/23

SAND PACK INTERVAL (FEET): 2.5-13

PROJECT: CODY #D #3-7

BENTONITE/GROUT INTERVAL (FEET): 0.5-2.5

LOGGED BY: K. MARCUM

WELL SCREEN INTERVAL (FEET): 3-13

DRILLING COMPANY/EQUIPMENT: EAGLE/GEOPROBE

WELL DIAMETER (INCHES): 2

BORING DEPTH (FEET): 15

WELL DEPTH (FEET): 13

PID INSTRUMENT: Ion Tiger XLT - PID #17

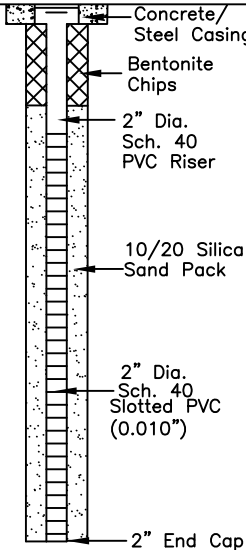
TIME STARTED/COMPLETED: 1015/1030

SAMPLE COLLECTION DEPTH (FT.)/TIME: 2.5-4/1015



**EAGLE**  
 ENVIRONMENTAL  
 CONSULTING, LLC

8000 W 44th Ave., Wheat Ridge, CO 80033  
 Ph: 303-433-0479 • F: 303-325-5449

DEPTH (FT)	LITHOLOGY	SAMPLE				OVM/OVA (PPM)	BLOW COUNT (per 0.5 FT)	DEPTH (FT)	WELL CONSTRUCTION DETAIL	COMMENTS
	DESCRIPTION	GRAPHIC LOG	TYPE	NUMBER	RECOVERY %					
0	(0-7.5') clayey SAND - brown, moist to wet, loose, medium grained, moderately-graded with ~40% clay, N/O, N/S	SC	DP	1	80	2.3	N/A			
@~4' - wet						3.5				
5		DP	2	90	2.7		N/A	5		
(7.5-15') silty SAND - brown, wet, loose, fine to medium grained, poorly-graded with ~30% silt, ferrous staining, N/O, N/S						2.3		10		
10		SM	DP	3	100	1.8	N/A			
						2.1		15		
15	BoB @ 15'							15		
20								20		
25								25		
30								30		

HA - Hand Auger  
 DP - Direct Push  
 HC - Hydrocarbon  
 BoB - Bottom of Boring  
 N/O - no odor  
 N/S - no staining  
 TOC - top of casing  
 bgs - below ground surface

START/COMPLETION DATE: 04/13/23

SAND PACK INTERVAL (FEET): 2.5-13

PROJECT: CODY #D #3-7

BENTONITE/GROUT INTERVAL (FEET): 0.5-2.5

LOGGED BY: K. MARCUM

WELL SCREEN INTERVAL (FEET): 3-13

DRILLING COMPANY/EQUIPMENT: EAGLE/GEOPROBE

WELL DIAMETER (INCHES): 2

BORING DEPTH (FEET): 15

WELL DEPTH (FEET): 13

PID INSTRUMENT: Ion Tiger XLT - PID #17

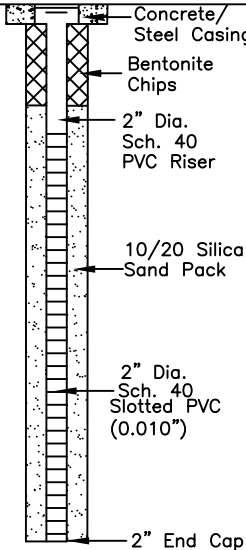
TIME STARTED/COMPLETED: 1045/1100

SAMPLE COLLECTION DEPTH (FT.)/TIME: 2.5-4/1045



**EAGLE**  
 ENVIRONMENTAL  
 CONSULTING, LLC

8000 W 44th Ave., Wheat Ridge, CO 80033  
 Ph: 303-433-0479 • F: 303-325-5449

DEPTH (FT)	LITHOLOGY	SAMPLE				OVM/OVA (PPM)	BLOW COUNT (per 0.5 FT)	DEPTH (FT)	WELL CONSTRUCTION DETAIL	COMMENTS
	DESCRIPTION	GRAPHIC LOG	TYPE	NUMBER	RECOVERY %					
0	(0-7.5') clayey SAND - brown, moist to wet, loose, medium grained, moderately-graded with ~40% clay, N/O, N/S	SC	DP	1	90	2.5	N/A			
@~4' - wet						3.3				
5		DP	2	80	80	2.3	N/A	5		
(7.5-15') silty SAND - brown, wet, loose, fine to medium grained, poorly-graded with ~30% silt, N/O, N/S						1.8				
10		SM	DP	3	90	1.4	N/A	10		
						1.2				
15	BoB @ 15'							15		
20								20		
25								25		
30										

HA - Hand Auger  
 DP - Direct Push  
 HC - Hydrocarbon  
 BoB - Bottom of Boring  
 N/O - no odor  
 N/S - no staining  
 TOC - top of casing  
 bgs - below ground surface

START/COMPLETION DATE: 04/13/23

SAND PACK INTERVAL (FEET): 2.5-13

PROJECT: CODY #D #3-7

BENTONITE/GROUT INTERVAL (FEET): 0.5-2.5

LOGGED BY: K. MARCUM

WELL SCREEN INTERVAL (FEET): 3-13

DRILLING COMPANY/EQUIPMENT: EAGLE/GEOPROBE

WELL DIAMETER (INCHES): 2

BORING DEPTH (FEET): 15

WELL DEPTH (FEET): 13

PID INSTRUMENT: Ion Tiger XLT - PID #17

TIME STARTED/COMPLETED: 1115/1130

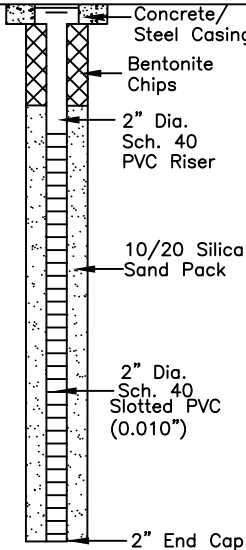
SAMPLE COLLECTION DEPTH (FT.)/TIME: 2.5-4/1115



**EAGLE**  
 ENVIRONMENTAL  
 CONSULTING, LLC

8000 W 44th Ave., Wheat Ridge, CO 80033  
 Ph: 303-433-0479 • F: 303-325-5449



DEPTH (FT)	LITHOLOGY	SAMPLE				OVM/OVA (PPM)	BLOW COUNT (per 0.5 FT)	DEPTH (FT)	WELL CONSTRUCTION DETAIL	COMMENTS
	DESCRIPTION	GRAPHIC LOG	TYPE	NUMBER	RECOVERY %					
0	(0-7.5') clayey SAND - brown, moist to wet, loose, medium grained, moderately-graded with ~40% clay, N/O, N/S	SC	DP	1	90	1.9	N/A			
@~4' - wet						2.1				
5		DP	2	80	80	1.4	N/A	5		
						1.1				
10	(7.5-15') silty SAND - brown, wet, loose, fine to medium grained, poorly-graded with ~30% silt, N/O, N/S	SM	DP	3	100	0.8	N/A	10		
						0.4				
15	BoB @ 15'							15		
20								20		
25								25		
30										

HA - Hand Auger  
DP - Direct Push  
HC - Hydrocarbon  
BoB - Bottom of Boring  
N/O - no odor  
N/S - no staining  
TOC - top of casing  
bgs - below ground surface

START/COMPLETION DATE: 04/13/23

SAND PACK INTERVAL (FEET): 2.5-13

PROJECT: CODY #D #3-7

BENTONITE/GROUT INTERVAL (FEET): 0.5-2.5

LOGGED BY: K. MARCUM

WELL SCREEN INTERVAL (FEET): 3-13

DRILLING COMPANY/EQUIPMENT: EAGLE/GEOPROBE

WELL DIAMETER (INCHES): 2

BORING DEPTH (FEET): 15

WELL DEPTH (FEET): 13

PID INSTRUMENT: Ion Tiger XLT - PID #17

TIME STARTED/COMPLETED: 1245/1300

SAMPLE COLLECTION DEPTH (FT.)/TIME: 2.5-4/1245



**EAGLE**  
ENVIRONMENTAL  
CONSULTING, LLC

8000 W 44th Ave., Wheat Ridge, CO 80033  
Ph: 303-433-0479 • F: 303-325-5449



## **ATTACHMENT B**

### **Laboratory Analytical Reports**



April 26, 2023

Eagle Environmental Consulting, LLC

Martin C Eckert III

8000 W 44th Ave

Wheat Ridge CO 80033

Project Name - Noble - Cody #D #3-7

Project Number - [none]

Attached are your analytical results for Noble - Cody #D #3-7 received by Origins Laboratory, Inc. April 13, 2023. This project is associated with Origins project number Y304326-01.

The analytical results in the following report were analyzed under the guidelines of EPA Methods. These methods are identified as follows; "SW" are defined in SW-846, "EPA" are defined in 40CFR part 136 and "SM" are defined in the most current revision of Standard Methods For the Examination of Water and Wastewater.

The analytical results apply specifically to the samples and analyses specified per the attached Chain of Custody. As such, this report shall not be reproduced except in full, without the written approval of Origin's laboratory.

Unless otherwise noted, the analytical results for all soil samples are reported on a wet weight basis. All analytical analyses were performed under NELAP guidelines unless noted by a data qualifier.

Any holding time exceedances, deviations from the method specifications or deviations from Origins Laboratory's Standard Operating Procedures are outlined in the case narrative.

Thank you for selecting Origins for your analytical needs. Please contact us with any questions concerning this report, or if we can help with anything at all.

Origins Laboratory, Inc.  
303.433.1322  
o-squad@oelabinc.com



1725 Elk Place, Denver, CO 80211 | Phone: 303.433.1322 | Fax: 303.265.9645

Eagle Environmental Consulting, LLC  
8000 W 44th Ave  
Wheat Ridge CO 80033

Martin C Eckert III  
Project Number: [none]  
Project: Noble - Cody #D #3-7

## CROSS REFERENCE REPORT

Sample ID	Laboratory ID	Matrix	Date Sampled	Date Received
MW-01@2.5-4'	Y304326-01	Soil	April 13, 2023 9:50	04/13/2023 16:15
MW-02@2.5-4'	Y304326-02	Soil	April 13, 2023 10:15	04/13/2023 16:15
MW-03@2.5-4'	Y304326-03	Soil	April 13, 2023 10:45	04/13/2023 16:15
MW-04@2.5-4'	Y304326-04	Soil	April 13, 2023 11:15	04/13/2023 16:15
MW-05@2.5-4'	Y304326-05	Soil	April 13, 2023 12:45	04/13/2023 16:15

Origins Laboratory, Inc.



*The results in this report apply to the samples analyzed in accordance with the chain of custody document. This analytical report must be reproduced in its entirety.*





Eagle Environmental Consulting, LLC  
8000 W 44th Ave  
Wheat Ridge CO 80033

Martin C Eckert III  
Project Number: [none]  
Project: Noble - Cody #D #3-7

Origins Laboratory

F-012207-01-R1  
Effective Date: 01/09/12

### Sample Receipt Checklist

Origins Work Order: 4304220

Client: Eagle Environ

Client Project ID: Cody #D #3-7

Checklist Completed by: JSN/EHS

Shipped Via: HD

(UPS, FedEx, Hand Delivered, Pick-up, etc.)

Date/time completed: 4/14/23

Airbill #: NA

Matrix(s) Received: (Check all that apply): ☒ Soil/Solid ☐ Water ☐ Other: \_\_\_\_\_

Cooler Number/Temperature: 1, 25° c / \_\_\_\_\_ ° c / \_\_\_\_\_ ° c (Describe) \_\_\_\_\_ ° c

Thermometer ID: T004

Requirement Description	Yes	No	N/A	Comments (if any)
If samples require cooling, was the temperature between 0°C to ≤ 6°C <sup>(1)</sup> ?	<input checked="" type="checkbox"/>	<input type="checkbox"/>	<input type="checkbox"/>	
Is there ice present (document if blue ice is used)	<input checked="" type="checkbox"/>	<input type="checkbox"/>	<input type="checkbox"/>	
Are custody seals present on cooler? (if so, document in comments if they are signed and dated, broken or intact)	<input type="checkbox"/>	<input checked="" type="checkbox"/>	<input type="checkbox"/>	
Are custody seals present on each sample container? (if so, document in comments if they are signed and dated, broken or intact)	<input type="checkbox"/>	<input checked="" type="checkbox"/>	<input type="checkbox"/>	
Were all samples received intact <sup>(1)</sup> ?	<input checked="" type="checkbox"/>	<input type="checkbox"/>	<input type="checkbox"/>	
Was adequate sample volume provided <sup>(1)</sup> ?	<input checked="" type="checkbox"/>	<input type="checkbox"/>	<input type="checkbox"/>	
Are short holding time analytes or samples with HTs due within 48 hours present <sup>(1)</sup> ?	<input type="checkbox"/>	<input checked="" type="checkbox"/>	<input type="checkbox"/>	
Is a chain-of-custody (COC) present and filled out completely <sup>(1)</sup> ?	<input checked="" type="checkbox"/>	<input type="checkbox"/>	<input type="checkbox"/>	
Does the COC agree with the number and type of sample bottles received <sup>(1)</sup> ?	<input checked="" type="checkbox"/>	<input type="checkbox"/>	<input type="checkbox"/>	
Do the sample IDs on the bottle labels match the COC <sup>(1)</sup> ?	<input checked="" type="checkbox"/>	<input type="checkbox"/>	<input type="checkbox"/>	
Is the COC properly relinquished by the client with date and time recorded <sup>(1)</sup> ?	<input checked="" type="checkbox"/>	<input type="checkbox"/>	<input type="checkbox"/>	
For volatiles in water – is there headspace (> ¼ inch bubble) present? If yes, contact client and note in narrative.	<input type="checkbox"/>	<input type="checkbox"/>	<input checked="" type="checkbox"/>	
Are samples preserved that require preservation and was it checked <sup>(1)</sup> ? (note ID of confirmation instrument used in comments) / (preservation is not confirmed for subcontracted analyses in order to insure sample integrity)/(pH <2 for samples preserved with HNO <sub>3</sub> , HCL, H <sub>2</sub> SO <sub>4</sub> ) / (pH >10 for samples preserved with NaAsO <sub>2</sub> +NaOH, ZnAc+NaOH)	<input type="checkbox"/>	<input type="checkbox"/>	<input checked="" type="checkbox"/>	
Additional Comments (if any):				

<sup>(1)</sup> If NO, then contact the client before proceeding with analysis and note date, time and person contacted as well as the corrective action to in the additional comments (above) and the case narrative.

Reviewed by (Project Manager) [Signature]

4/17/23  
Date/Time Reviewed

Origins Laboratory, Inc.

[Signature]

The results in this report apply to the samples analyzed in accordance with the chain of custody document. This analytical report must be reproduced in its entirety.

Eagle Environmental Consulting, LLC  
8000 W 44th Ave  
Wheat Ridge CO 80033

Martin C Eckert III  
Project Number: [none]  
Project: Noble - Cody #D #3-7

MW-01@2.5-4'

4/13/2023 9:50:00AM

Analyte	Result	Min Detection Limit	Reporting Limit	Units	Dilution	Batch	Prepared	Analyzed	Notes
---------	--------	---------------------	-----------------	-------	----------	-------	----------	----------	-------

Origins Laboratory, Inc.  
Y304326-01 (Soil)

## DRO/ORO by EPA 8015D

Diesel (C10-C28)	ND	25.0	mg/kg	1	B3D1424	04/14/2023	04/18/2023	U
Residual Range Organics (C28-C40)	ND	100	"	"	"	"	"	U

Surrogate: o-Terphenyl	87.6 %	50-150	"	"	"
------------------------	--------	--------	---	---	---

## GBTEX+TMBs by 8260D

1,2,4-Trimethylbenzene	ND	0.00200	mg/kg	1	B3D1432	04/14/2023	04/15/2023	U
1,3,5-Trimethylbenzene	ND	0.00200	"	"	"	"	"	U
Benzene	ND	0.00200	"	"	"	"	"	U
Ethylbenzene	ND	0.00200	"	"	"	"	"	U
Toluene	ND	0.00200	"	"	"	"	"	U
Xylenes, total	ND	0.00200	"	"	"	"	"	U
Gasoline Range Hydrocarbons	ND	0.200	"	"	"	"	"	U

Surrogate: 1,2-Dichloroethane-d4	97.7 %	70-130	"	"	"
Surrogate: Toluene-d8	85.8 %	70-130	"	"	"
Surrogate: 4-Bromofluorobenzene	105 %	70-130	"	"	"

## PAH by 8270D SIM

Origins Laboratory, Inc.



The results in this report apply to the samples analyzed in accordance with the chain of custody document. This analytical report must be reproduced in its entirety.

Eagle Environmental Consulting, LLC  
8000 W 44th Ave  
Wheat Ridge CO 80033

Martin C Eckert III  
Project Number: [none]  
Project: Noble - Cody #D #3-7

MW-01@2.5-4'

4/13/2023 9:50:00AM

Analyte	Result	Min Detection Limit	Reporting Limit	Units	Dilution	Batch	Prepared	Analyzed	Notes
---------	--------	---------------------	-----------------	-------	----------	-------	----------	----------	-------

Waypoint Analytical, LLC.  
Y304326-01 (Soil)

## PAH by 8270D SIM

1-Methylnaphthalene	ND	0.00109	0.00201	mg/Kg	1	L677191	04/20/2023	04/20/2023	
2-Methylnaphthalene	ND	0.00194	0.00201	"	"	"	"	"	
Acenaphthene	ND	0.000304	0.00067	"	"	"	"	"	
Anthracene	ND	0.000334	0.00067	"	"	"	"	"	
Benzo(a)anthracene	ND	0.000493	0.00067	"	"	"	"	"	
Benzo(a)pyrene	ND	0.000468	0.00067	"	"	"	"	"	
Benzo(b)fluoranthene	ND	0.000585	0.00067	"	"	"	"	"	
Benzo(k)fluoranthene	ND	0.000437	0.00067	"	"	"	"	"	
Chrysene	ND	0.000624	0.00067	"	"	"	"	"	
Dibenz(a,h)anthracene	ND	0.000614	0.00067	"	"	"	"	"	
Fluoranthene	ND	0.000394	0.00067	"	"	"	"	"	
Fluorene	ND	0.000286	0.00067	"	"	"	"	"	
Indeno(1,2,3-cd)pyrene	0.000645	0.000627	0.00067	"	"	"	"	"	J
Naphthalene	ND	0.00145	0.00201	"	"	"	"	"	
Pyrene	ND	0.000643	0.00067	"	"	"	"	"	

Surrogate: 2-Fluorobiphenyl	42.7 %	33-115	"	"	"
Surrogate: 4-Terphenyl-d14	46.3 %	33-122	"	"	"
Surrogate: Nitrobenzene-d5	40.2 %	29-110	"	"	"

Origins Laboratory, Inc.



The results in this report apply to the samples analyzed in accordance with the chain of custody document. This analytical report must be reproduced in its entirety.



Eagle Environmental Consulting, LLC  
8000 W 44th Ave  
Wheat Ridge CO 80033

Martin C Eckert III  
Project Number: [none]  
Project: Noble - Cody #D #3-7

MW-01@2.5-4'

4/13/2023 9:50:00AM

Analyte	Result	Min Detection Limit	Reporting Limit	Units	Dilution	Batch	Prepared	Analyzed	Notes
---------	--------	------------------------	--------------------	-------	----------	-------	----------	----------	-------

Origins Laboratory, Inc.  
Y304326-01 (Soil)

### Table 915 metals by EPA 6020B

Barium	74.6	8.65	mg/kg	10	B3D1703	04/17/2023	04/17/2023
Lead	ND	8.65	"	"	"	"	"
Selenium	0.202	0.0865	"	"	"	"	"

Origins Laboratory, Inc.



The results in this report apply to the samples analyzed in accordance with the chain of custody document. This analytical report must be reproduced in its entirety.

Eagle Environmental Consulting, LLC  
8000 W 44th Ave  
Wheat Ridge CO 80033

Martin C Eckert III  
Project Number: [none]  
Project: Noble - Cody #D #3-7

MW-02@2.5-4'

4/13/2023 10:15:00AM

Analyte	Result	Min Detection Limit	Reporting Limit	Units	Dilution	Batch	Prepared	Analyzed	Notes
---------	--------	---------------------	-----------------	-------	----------	-------	----------	----------	-------

**Origins Laboratory, Inc.**  
**Y304326-02 (Soil)**

**DRO/ORO by EPA 8015D**

Diesel (C10-C28)	ND	25.0	mg/kg	1	B3D1424	04/14/2023	04/19/2023	U
Residual Range Organics (C28-C40)	ND	100	"	"	"	"	"	U

Surrogate: o-Terphenyl 87.4 % 50-150 " " "

**GBTEX+TMBs by 8260D**

1,2,4-Trimethylbenzene	ND	0.00200	mg/kg	1	B3D1432	04/14/2023	04/15/2023	U
1,3,5-Trimethylbenzene	ND	0.00200	"	"	"	"	"	U
Benzene	ND	0.00200	"	"	"	"	"	U
Ethylbenzene	ND	0.00200	"	"	"	"	"	U
Toluene	ND	0.00200	"	"	"	"	"	U
Xylenes, total	ND	0.00200	"	"	"	"	"	U
Gasoline Range Hydrocarbons	ND	0.200	"	"	"	"	"	U

Surrogate: 1,2-Dichloroethane-d4 95.1 % 70-130 " " "  
Surrogate: Toluene-d8 101 % 70-130 " " "  
Surrogate: 4-Bromofluorobenzene 95.9 % 70-130 " " "

**PAH by 8270D SIM**

Origins Laboratory, Inc.



The results in this report apply to the samples analyzed in accordance with the chain of custody document. This analytical report must be reproduced in its entirety.

Eagle Environmental Consulting, LLC  
8000 W 44th Ave  
Wheat Ridge CO 80033

Martin C Eckert III  
Project Number: [none]  
Project: Noble - Cody #D #3-7

MW-02@2.5-4'

4/13/2023 10:15:00AM

Analyte	Result	Min Detection Limit	Reporting Limit	Units	Dilution	Batch	Prepared	Analyzed	Notes
---------	--------	---------------------	-----------------	-------	----------	-------	----------	----------	-------

Waypoint Analytical, LLC.  
Y304326-02 (Soil)

## PAH by 8270D SIM

1-Methylnaphthalene	ND	0.00109	0.00201	mg/Kg	1	L677191	04/20/2023	04/20/2023
2-Methylnaphthalene	ND	0.00194	0.00201	"	"	"	"	"
Acenaphthene	ND	0.000304	0.00067	"	"	"	"	"
Anthracene	ND	0.000334	0.00067	"	"	"	"	"
Benzo(a)anthracene	ND	0.000493	0.00067	"	"	"	"	"
Benzo(a)pyrene	ND	0.000468	0.00067	"	"	"	"	"
Benzo(b)fluoranthene	ND	0.000585	0.00067	"	"	"	"	"
Benzo(k)fluoranthene	ND	0.000437	0.00067	"	"	"	"	"
Chrysene	ND	0.000624	0.00067	"	"	"	"	"
Dibenz(a,h)anthracene	ND	0.000614	0.00067	"	"	"	"	"
Fluoranthene	ND	0.000394	0.00067	"	"	"	"	"
Fluorene	ND	0.000286	0.00067	"	"	"	"	"
Indeno(1,2,3-cd)pyrene	ND	0.000627	0.00067	"	"	"	"	"
Naphthalene	ND	0.00145	0.00201	"	"	"	"	"
Pyrene	ND	0.000643	0.00067	"	"	"	"	"

Surrogate: 2-Fluorobiphenyl	43.4 %	33-115	"	"	"
Surrogate: 4-Terphenyl-d14	46.2 %	33-122	"	"	"
Surrogate: Nitrobenzene-d5	39.1 %	29-110	"	"	"

Origins Laboratory, Inc.



The results in this report apply to the samples analyzed in accordance with the chain of custody document. This analytical report must be reproduced in its entirety.

Eagle Environmental Consulting, LLC  
8000 W 44th Ave  
Wheat Ridge CO 80033

Martin C Eckert III  
Project Number: [none]  
Project: Noble - Cody #D #3-7

MW-02@2.5-4'

4/13/2023 10:15:00AM

Analyte	Result	Min Detection Limit	Reporting Limit	Units	Dilution	Batch	Prepared	Analyzed	Notes
---------	--------	------------------------	--------------------	-------	----------	-------	----------	----------	-------

Origins Laboratory, Inc.  
Y304326-02 (Soil)

## Table 915 metals by EPA 6020B

Barium	53.9	8.45	mg/kg	10	B3D1703	04/17/2023	04/17/2023
Lead	ND	8.45	"	"	"	"	"
Selenium	0.197	0.0845	"	"	"	"	"

Origins Laboratory, Inc.



The results in this report apply to the samples analyzed in accordance with the chain of custody document. This analytical report must be reproduced in its entirety.



Eagle Environmental Consulting, LLC  
8000 W 44th Ave  
Wheat Ridge CO 80033

Martin C Eckert III  
Project Number: [none]  
Project: Noble - Cody #D #3-7

MW-03@2.5-4'

4/13/2023 10:45:00AM

Analyte	Result	Min Detection Limit	Reporting Limit	Units	Dilution	Batch	Prepared	Analyzed	Notes
---------	--------	---------------------	-----------------	-------	----------	-------	----------	----------	-------

Origins Laboratory, Inc.  
Y304326-03 (Soil)

## DRO/ORO by EPA 8015D

Diesel (C10-C28)	ND	25.0	mg/kg	1	B3D1424	04/14/2023	04/19/2023	U
Residual Range Organics (C28-C40)	ND	100	"	"	"	"	"	U

Surrogate: o-Terphenyl 88.6 % 50-150 " " "

## GBTEX+TMBs by 8260D

1,2,4-Trimethylbenzene	ND	0.00200	mg/kg	1	B3D1432	04/14/2023	04/16/2023	U
1,3,5-Trimethylbenzene	ND	0.00200	"	"	"	"	"	U
Benzene	ND	0.00200	"	"	"	"	"	U
Ethylbenzene	ND	0.00200	"	"	"	"	"	U
Toluene	ND	0.00200	"	"	"	"	"	U
Xylenes, total	ND	0.00200	"	"	"	"	"	U
Gasoline Range Hydrocarbons	ND	0.200	"	"	"	"	"	U

Surrogate: 1,2-Dichloroethane-d4 94.5 % 70-130 " " "  
Surrogate: Toluene-d8 84.8 % 70-130 " " "  
Surrogate: 4-Bromofluorobenzene 105 % 70-130 " " "

## PAH by 8270D SIM

Origins Laboratory, Inc.



The results in this report apply to the samples analyzed in accordance with the chain of custody document. This analytical report must be reproduced in its entirety.

Eagle Environmental Consulting, LLC  
8000 W 44th Ave  
Wheat Ridge CO 80033

Martin C Eckert III  
Project Number: [none]  
Project: Noble - Cody #D #3-7

MW-03@2.5-4'

4/13/2023 10:45:00AM

Analyte	Result	Min Detection Limit	Reporting Limit	Units	Dilution	Batch	Prepared	Analyzed	Notes
---------	--------	---------------------	-----------------	-------	----------	-------	----------	----------	-------

Waypoint Analytical, LLC.  
Y304326-03 (Soil)

## PAH by 8270D SIM

1-Methylnaphthalene	ND	0.00109	0.00201	mg/Kg	1	L677191	04/20/2023	04/20/2023
2-Methylnaphthalene	ND	0.00194	0.00201	"	"	"	"	"
Acenaphthene	ND	0.000304	0.00067	"	"	"	"	"
Anthracene	ND	0.000334	0.00067	"	"	"	"	"
Benzo(a)anthracene	ND	0.000493	0.00067	"	"	"	"	"
Benzo(a)pyrene	ND	0.000468	0.00067	"	"	"	"	"
Benzo(b)fluoranthene	ND	0.000585	0.00067	"	"	"	"	"
Benzo(k)fluoranthene	ND	0.000437	0.00067	"	"	"	"	"
Chrysene	ND	0.000624	0.00067	"	"	"	"	"
Dibenz(a,h)anthracene	ND	0.000614	0.00067	"	"	"	"	"
Fluoranthene	ND	0.000394	0.00067	"	"	"	"	"
Fluorene	ND	0.000286	0.00067	"	"	"	"	"
Indeno(1,2,3-cd)pyrene	ND	0.000627	0.00067	"	"	"	"	"
Naphthalene	ND	0.00145	0.00201	"	"	"	"	"
Pyrene	ND	0.000643	0.00067	"	"	"	"	"

Surrogate: 2-Fluorobiphenyl	46.7 %	33-115	"	"	"
Surrogate: 4-Terphenyl-d14	49.1 %	33-122	"	"	"
Surrogate: Nitrobenzene-d5	43.1 %	29-110	"	"	"

Origins Laboratory, Inc.



The results in this report apply to the samples analyzed in accordance with the chain of custody document. This analytical report must be reproduced in its entirety.

Eagle Environmental Consulting, LLC  
8000 W 44th Ave  
Wheat Ridge CO 80033

Martin C Eckert III  
Project Number: [none]  
Project: Noble - Cody #D #3-7

MW-03@2.5-4'

4/13/2023 10:45:00AM

Analyte	Result	Min Detection Limit	Reporting Limit	Units	Dilution	Batch	Prepared	Analyzed	Notes
---------	--------	------------------------	--------------------	-------	----------	-------	----------	----------	-------

Origins Laboratory, Inc.  
Y304326-03 (Soil)

## Table 915 metals by EPA 6020B

Barium	70.8	8.91	mg/kg	10	B3D1703	04/17/2023	04/17/2023
Lead	ND	8.91	"	"	"	"	"
Selenium	0.230	0.0891	"	"	"	"	"

Origins Laboratory, Inc.



The results in this report apply to the samples analyzed in accordance with the chain of custody document. This analytical report must be reproduced in its entirety.

Eagle Environmental Consulting, LLC  
8000 W 44th Ave  
Wheat Ridge CO 80033

Martin C Eckert III  
Project Number: [none]  
Project: Noble - Cody #D #3-7

MW-04@2.5-4'

4/13/2023 11:15:00AM

Analyte	Result	Min Detection Limit	Reporting Limit	Units	Dilution	Batch	Prepared	Analyzed	Notes
---------	--------	---------------------	-----------------	-------	----------	-------	----------	----------	-------

**Origins Laboratory, Inc.**  
**Y304326-04 (Soil)**

**DRO/ORO by EPA 8015D**

Diesel (C10-C28)	ND	25.0	mg/kg	1	B3D1424	04/14/2023	04/19/2023	U
Residual Range Organics (C28-C40)	ND	100	"	"	"	"	"	U

Surrogate: o-Terphenyl 89.3 % 50-150 " " "

**GBTEX+TMBs by 8260D**

1,2,4-Trimethylbenzene	ND	0.00200	mg/kg	1	B3D1432	04/14/2023	04/16/2023	U
1,3,5-Trimethylbenzene	ND	0.00200	"	"	"	"	"	U
Benzene	ND	0.00200	"	"	"	"	"	U
Ethylbenzene	ND	0.00200	"	"	"	"	"	U
Toluene	ND	0.00200	"	"	"	"	"	U
Xylenes, total	ND	0.00200	"	"	"	"	"	U
Gasoline Range Hydrocarbons	ND	0.200	"	"	"	"	"	U

Surrogate: 1,2-Dichloroethane-d4 90.2 % 70-130 " " "  
Surrogate: Toluene-d8 84.8 % 70-130 " " "  
Surrogate: 4-Bromofluorobenzene 86.4 % 70-130 " " "

**PAH by 8270D SIM**

Origins Laboratory, Inc.



The results in this report apply to the samples analyzed in accordance with the chain of custody document. This analytical report must be reproduced in its entirety.



Eagle Environmental Consulting, LLC  
8000 W 44th Ave  
Wheat Ridge CO 80033

Martin C Eckert III  
Project Number: [none]  
Project: Noble - Cody #D #3-7

MW-04@2.5-4'

4/13/2023 11:15:00AM

Analyte	Result	Min Detection Limit	Reporting Limit	Units	Dilution	Batch	Prepared	Analyzed	Notes
---------	--------	---------------------	-----------------	-------	----------	-------	----------	----------	-------

Waypoint Analytical, LLC.  
Y304326-04 (Soil)

## PAH by 8270D SIM

1-Methylnaphthalene	ND	0.00109	0.00201	mg/Kg	1	L677191	04/20/2023	04/20/2023
2-Methylnaphthalene	ND	0.00194	0.00201	"	"	"	"	"
Acenaphthene	ND	0.000304	0.00067	"	"	"	"	"
Anthracene	ND	0.000334	0.00067	"	"	"	"	"
Benzo(a)anthracene	ND	0.000493	0.00067	"	"	"	"	"
Benzo(a)pyrene	ND	0.000468	0.00067	"	"	"	"	"
Benzo(b)fluoranthene	ND	0.000585	0.00067	"	"	"	"	"
Benzo(k)fluoranthene	ND	0.000437	0.00067	"	"	"	"	"
Chrysene	ND	0.000624	0.00067	"	"	"	"	"
Dibenz(a,h)anthracene	ND	0.000614	0.00067	"	"	"	"	"
Fluoranthene	ND	0.000394	0.00067	"	"	"	"	"
Fluorene	ND	0.000286	0.00067	"	"	"	"	"
Indeno(1,2,3-cd)pyrene	ND	0.000627	0.00067	"	"	"	"	"
Naphthalene	ND	0.00145	0.00201	"	"	"	"	"
Pyrene	ND	0.000643	0.00067	"	"	"	"	"

Surrogate: 2-Fluorobiphenyl	51.1 %	33-115	"	"	"
Surrogate: 4-Terphenyl-d14	52.6 %	33-122	"	"	"
Surrogate: Nitrobenzene-d5	45.9 %	29-110	"	"	"

Origins Laboratory, Inc.



The results in this report apply to the samples analyzed in accordance with the chain of custody document. This analytical report must be reproduced in its entirety.

Eagle Environmental Consulting, LLC  
8000 W 44th Ave  
Wheat Ridge CO 80033

Martin C Eckert III  
Project Number: [none]  
Project: Noble - Cody #D #3-7

MW-04@2.5-4'

4/13/2023 11:15:00AM

Analyte	Result	Min Detection Limit	Reporting Limit	Units	Dilution	Batch	Prepared	Analyzed	Notes
---------	--------	------------------------	--------------------	-------	----------	-------	----------	----------	-------

Origins Laboratory, Inc.  
Y304326-04 (Soil)

## Table 915 metals by EPA 6020B

Barium	40.8	9.65	mg/kg	10	B3D1703	04/17/2023	04/17/2023
Lead	ND	9.65	"	"	"	"	"
Selenium	0.110	0.0965	"	"	"	"	"

Origins Laboratory, Inc.



The results in this report apply to the samples analyzed in accordance with the chain of custody document. This analytical report must be reproduced in its entirety.

Eagle Environmental Consulting, LLC  
8000 W 44th Ave  
Wheat Ridge CO 80033

Martin C Eckert III  
Project Number: [none]  
Project: Noble - Cody #D #3-7

MW-05@2.5-4'

4/13/2023 12:45:00PM

Analyte	Result	Min Detection Limit	Reporting Limit	Units	Dilution	Batch	Prepared	Analyzed	Notes
---------	--------	---------------------	-----------------	-------	----------	-------	----------	----------	-------

**Origins Laboratory, Inc.**  
**Y304326-05 (Soil)**

**DRO/ORO by EPA 8015D**

Diesel (C10-C28)	ND	25.0	mg/kg	1	B3D1424	04/14/2023	04/19/2023	U
Residual Range Organics (C28-C40)	ND	100	"	"	"	"	"	U

Surrogate: o-Terphenyl 87.1 % 50-150 " " "

**GBTEX+TMBs by 8260D**

1,2,4-Trimethylbenzene	ND	0.00200	mg/kg	1	B3D1432	04/14/2023	04/16/2023	U
1,3,5-Trimethylbenzene	ND	0.00200	"	"	"	"	"	U
Benzene	ND	0.00200	"	"	"	"	"	U
Ethylbenzene	ND	0.00200	"	"	"	"	"	U
Toluene	ND	0.00200	"	"	"	"	"	U
Xylenes, total	ND	0.00200	"	"	"	"	"	U
Gasoline Range Hydrocarbons	ND	0.200	"	"	"	"	"	U

Surrogate: 1,2-Dichloroethane-d4 80.0 % 70-130 " " "  
Surrogate: Toluene-d8 87.2 % 70-130 " " "  
Surrogate: 4-Bromofluorobenzene 102 % 70-130 " " "

**PAH by 8270D SIM**

Origins Laboratory, Inc.



The results in this report apply to the samples analyzed in accordance with the chain of custody document. This analytical report must be reproduced in its entirety.

Eagle Environmental Consulting, LLC  
8000 W 44th Ave  
Wheat Ridge CO 80033

Martin C Eckert III  
Project Number: [none]  
Project: Noble - Cody #D #3-7

MW-05@2.5-4'

4/13/2023 12:45:00PM

Analyte	Result	Min Detection Limit	Reporting Limit	Units	Dilution	Batch	Prepared	Analyzed	Notes
---------	--------	---------------------	-----------------	-------	----------	-------	----------	----------	-------

Waypoint Analytical, LLC.  
Y304326-05 (Soil)

## PAH by 8270D SIM

1-Methylnaphthalene	ND	0.00109	0.00201	mg/Kg	1	L677191	04/20/2023	04/20/2023
2-Methylnaphthalene	ND	0.00194	0.00201	"	"	"	"	"
Acenaphthene	ND	0.000304	0.00067	"	"	"	"	"
Anthracene	ND	0.000334	0.00067	"	"	"	"	"
Benzo(a)anthracene	ND	0.000493	0.00067	"	"	"	"	"
Benzo(a)pyrene	ND	0.000468	0.00067	"	"	"	"	"
Benzo(b)fluoranthene	ND	0.000585	0.00067	"	"	"	"	"
Benzo(k)fluoranthene	ND	0.000437	0.00067	"	"	"	"	"
Chrysene	ND	0.000624	0.00067	"	"	"	"	"
Dibenz(a,h)anthracene	ND	0.000614	0.00067	"	"	"	"	"
Fluoranthene	ND	0.000394	0.00067	"	"	"	"	"
Fluorene	ND	0.000286	0.00067	"	"	"	"	"
Indeno(1,2,3-cd)pyrene	ND	0.000627	0.00067	"	"	"	"	"
Naphthalene	ND	0.00145	0.00201	"	"	"	"	"
Pyrene	ND	0.000643	0.00067	"	"	"	"	"

Surrogate: 2-Fluorobiphenyl	47.7 %	33-115	"	"	"
Surrogate: 4-Terphenyl-d14	54.1 %	33-122	"	"	"
Surrogate: Nitrobenzene-d5	45 %	29-110	"	"	"

Origins Laboratory, Inc.



The results in this report apply to the samples analyzed in accordance with the chain of custody document. This analytical report must be reproduced in its entirety.

Eagle Environmental Consulting, LLC  
8000 W 44th Ave  
Wheat Ridge CO 80033

Martin C Eckert III  
Project Number: [none]  
Project: Noble - Cody #D #3-7

MW-05@2.5-4'

4/13/2023 12:45:00PM

Analyte	Result	Min Detection Limit	Reporting Limit	Units	Dilution	Batch	Prepared	Analyzed	Notes
---------	--------	------------------------	--------------------	-------	----------	-------	----------	----------	-------

Origins Laboratory, Inc.  
Y304326-05 (Soil)

## Table 915 metals by EPA 6020B

Barium	56.9	8.96	mg/kg	10	B3D1703	04/17/2023	04/17/2023
Lead	ND	8.96	"	"	"	"	"
Selenium	0.168	0.0896	"	"	"	"	"

Origins Laboratory, Inc.



The results in this report apply to the samples analyzed in accordance with the chain of custody document. This analytical report must be reproduced in its entirety.

Eagle Environmental Consulting, LLC  
8000 W 44th Ave  
Wheat Ridge CO 80033

Martin C Eckert III  
Project Number: [none]  
Project: Noble - Cody #D #3-7

## Extractable Petroleum Hydrocarbons by 8015D - Quality Control Origins Laboratory, Inc.

Analyte	Result	Reporting Limit	Units	Spike Level	Source Result	%REC	%REC Limits	RPD	RPD Limit	Notes
Batch B3D1424 - EPA 3550B										
Blank (B3D1424-BLK1)					Prepared: 04/14/2023 Analyzed: 04/18/2023					
Diesel (C10-C28)	ND	25.0	mg/kg							U
Residual Range Organics (C28-C40)	ND	100	"							U
Surrogate: o-Terphenyl	24		"	24.9		96.7	50-150			

Origins Laboratory, Inc.



The results in this report apply to the samples analyzed in accordance with the chain of custody document. This analytical report must be reproduced in its entirety.



Eagle Environmental Consulting, LLC  
8000 W 44th Ave  
Wheat Ridge CO 80033

Martin C Eckert III  
Project Number: [none]  
Project: Noble - Cody #D #3-7

## Extractable Petroleum Hydrocarbons by 8015D - Quality Control

### Origins Laboratory, Inc.

Analyte	Result	Reporting Limit	Units	Spike Level	Source Result	%REC	%REC Limits	RPD	RPD Limit	Notes
---------	--------	-----------------	-------	-------------	---------------	------	-------------	-----	-----------	-------

Batch B3D1424 - EPA 3550B

#### LCS (B3D1424-BS1)

Prepared: 04/14/2023 Analyzed: 04/18/2023

Diesel (C10-C28)	965	50.0	mg/kg	1000		96.5	70-130			
Residual Range Organics (C28-C40)	964	200	"	1000		96.4	70-130			
Surrogate: o-Terphenyl	52		"	49.8		105	50-150			

Origins Laboratory, Inc.



*The results in this report apply to the samples analyzed in accordance with the chain of custody document. This analytical report must be reproduced in its entirety.*

Eagle Environmental Consulting, LLC  
8000 W 44th Ave  
Wheat Ridge CO 80033

Martin C Eckert III  
Project Number: [none]  
Project: Noble - Cody #D #3-7

## Extractable Petroleum Hydrocarbons by 8015D - Quality Control Origins Laboratory, Inc.

Analyte	Result	Reporting Limit	Units	Spike Level	Source Result	%REC	%REC Limits	RPD	RPD Limit	Notes
---------	--------	-----------------	-------	-------------	---------------	------	-------------	-----	-----------	-------

Batch B3D1424 - EPA 3550B

Matrix Spike (B3D1424-MS1)		Source: Y304277-05			Prepared: 04/14/2023 Analyzed: 04/18/2023					
Diesel (C10-C28)	1020	50.0	mg/kg	1000	ND	102	70-130			
Residual Range Organics (C28-C40)	1010	200	"	1000	ND	101	70-130			
Surrogate: o-Terphenyl	46		"	49.8		91.6	50-150			

Origins Laboratory, Inc.



The results in this report apply to the samples analyzed in accordance with the chain of custody document. This analytical report must be reproduced in its entirety.

Eagle Environmental Consulting, LLC  
8000 W 44th Ave  
Wheat Ridge CO 80033

Martin C Eckert III  
Project Number: [none]  
Project: Noble - Cody #D #3-7

## Extractable Petroleum Hydrocarbons by 8015D - Quality Control Origins Laboratory, Inc.

Analyte	Result	Reporting Limit	Units	Spike Level	Source Result	%REC	%REC Limits	RPD	RPD Limit	Notes
Batch B3D1424 - EPA 3550B										
<b>Matrix Spike Dup (B3D1424-MSD1)</b>			<b>Source: Y304277-05</b>		Prepared: 04/14/2023 Analyzed: 04/18/2023					
Diesel (C10-C28)	1000	50.0	mg/kg	1000	ND	100	70-130	2.12	35	
Residual Range Organics (C28-C40)	1000	200	"	1000	ND	100	70-130	1.29	35	
Surrogate: o-Terphenyl	52		"	49.8		105	50-150			

Origins Laboratory, Inc.



*The results in this report apply to the samples analyzed in accordance with the chain of custody document. This analytical report must be reproduced in its entirety.*

Eagle Environmental Consulting, LLC  
8000 W 44th Ave  
Wheat Ridge CO 80033

Martin C Eckert III  
Project Number: [none]  
Project: Noble - Cody #D #3-7

## Extractable Petroleum Hydrocarbons by 8015D - Quality Control

### Origins Laboratory, Inc.

Analyte	Result	Reporting Limit	Units	Spike Level	Source Result	%REC	%REC Limits	RPD	RPD Limit	Notes
Batch B3D1432 - EPA 5030 (soil)										
Blank (B3D1432-BLK1)					Prepared: 04/14/2023 Analyzed: 04/15/2023					
1,2,4-Trimethylbenzene	ND	0.00200	mg/kg							U
1,3,5-Trimethylbenzene	ND	0.00200	"							U
Benzene	ND	0.00200	"							U
Ethylbenzene	ND	0.00200	"							U
Naphthalene	ND	0.00380	"							U
Toluene	ND	0.00200	"							U
Xylenes, total	ND	0.00200	"							U
Gasoline Range Hydrocarbons	ND	0.200	"							U
Surrogate: 1,2-Dichloroethane-d4	0.11		"	0.125		91.6	70-130			
Surrogate: Toluene-d8	0.11		"	0.125		91.9	70-130			
Surrogate: 4-Bromofluorobenzene	0.13		"	0.125		101	70-130			

Origins Laboratory, Inc.



The results in this report apply to the samples analyzed in accordance with the chain of custody document. This analytical report must be reproduced in its entirety.

Eagle Environmental Consulting, LLC  
8000 W 44th Ave  
Wheat Ridge CO 80033

Martin C Eckert III  
Project Number: [none]  
Project: Noble - Cody #D #3-7

**Volatile Organic Compounds by GC/MS SW846 8260D - Quality Control**  
**Origins Laboratory, Inc.**

Analyte	Result	Reporting Limit	Units	Spike Level	Source Result	%REC	%REC Limits	RPD	RPD Limit	Notes
<b>Batch B3D1432 - EPA 5030 (soil)</b>										
<b>LCS (B3D1432-BS1)</b>					Prepared: 04/14/2023 Analyzed: 04/15/2023					
1,2,4-Trimethylbenzene	0.0898	0.00200	mg/kg	0.100		89.8	70-130			
1,3,5-Trimethylbenzene	0.108	0.00200	"	0.100		108	70-130			
Benzene	0.109	0.00200	"	0.100		109	70-130			
Ethylbenzene	0.104	0.00200	"	0.100		104	70-130			
Naphthalene	0.109	0.00380	"	0.100		109	70-130			
Toluene	0.0955	0.00200	"	0.100		95.5	70-130			
o-Xylene	0.104	0.00200	"	0.100		104	70-130			
m,p-Xylene	0.220	0.00400	"	0.200		110	70-130			
Surrogate: 1,2-Dichloroethane-d4	0.13		"	0.125		101	70-130			
Surrogate: Toluene-d8	0.11		"	0.125		91.7	70-130			
Surrogate: 4-Bromofluorobenzene	0.12		"	0.125		99.8	70-130			

Origins Laboratory, Inc.



The results in this report apply to the samples analyzed in accordance with the chain of custody document. This analytical report must be reproduced in its entirety.

Eagle Environmental Consulting, LLC  
8000 W 44th Ave  
Wheat Ridge CO 80033

Martin C Eckert III  
Project Number: [none]  
Project: Noble - Cody #D #3-7

## Volatile Organic Compounds by GC/MS SW846 8260D - Quality Control

### Origins Laboratory, Inc.

Analyte	Result	Reporting Limit	Units	Spike Level	Source Result	%REC	%REC Limits	RPD	RPD Limit	Notes
Batch B3D1432 - EPA 5030 (soil)										
Matrix Spike (B3D1432-MS1)		Source: Y304315-01			Prepared: 04/14/2023 Analyzed: 04/15/2023					
1,2,4-Trimethylbenzene	0.0781	0.00200	mg/kg	0.100	ND	78.1	70-130			
1,3,5-Trimethylbenzene	0.0948	0.00200	"	0.100	ND	94.8	70-130			
Benzene	0.100	0.00200	"	0.100	ND	100	70-130			
Ethylbenzene	0.0981	0.00200	"	0.100	ND	98.1	70-130			
Naphthalene	0.0810	0.00380	"	0.100	ND	81.0	70-130			
Toluene	0.0891	0.00200	"	0.100	ND	89.1	70-130			
o-Xylene	0.0963	0.00200	"	0.100	ND	96.3	70-130			
m,p-Xylene	0.207	0.00400	"	0.200	ND	103	70-130			
Surrogate: 1,2-Dichloroethane-d4	0.13		"	0.125		101	70-130			
Surrogate: Toluene-d8	0.12		"	0.125		94.7	70-130			
Surrogate: 4-Bromofluorobenzene	0.13		"	0.125		104	70-130			

Origins Laboratory, Inc.



The results in this report apply to the samples analyzed in accordance with the chain of custody document. This analytical report must be reproduced in its entirety.



Eagle Environmental Consulting, LLC  
8000 W 44th Ave  
Wheat Ridge CO 80033

Martin C Eckert III  
Project Number: [none]  
Project: Noble - Cody #D #3-7

**Volatile Organic Compounds by GC/MS SW846 8260D - Quality Control**  
**Origins Laboratory, Inc.**

Analyte	Result	Reporting Limit	Units	Spike Level	Source Result	%REC	%REC Limits	RPD	RPD Limit	Notes
<b>Batch B3D1432 - EPA 5030 (soil)</b>										
<b>Matrix Spike Dup (B3D1432-MSD1)</b>			<b>Source: Y304315-01</b>		Prepared: 04/14/2023 Analyzed: 04/15/2023					
1,2,4-Trimethylbenzene	0.0651	0.00200	mg/kg	0.100	ND	65.1	70-130	18.2	20	QM-07
1,3,5-Trimethylbenzene	0.0764	0.00200	"	0.100	ND	76.4	70-130	21.4	20	QR-02
Benzene	0.0943	0.00200	"	0.100	ND	94.3	70-130	6.07	20	
Ethylbenzene	0.0849	0.00200	"	0.100	ND	84.9	70-130	14.4	20	
Naphthalene	0.0713	0.00380	"	0.100	ND	71.3	70-130	12.8	20	
Toluene	0.0743	0.00200	"	0.100	ND	74.3	70-130	18.2	20	
o-Xylene	0.0834	0.00200	"	0.100	ND	83.4	70-130	14.4	20	
m,p-Xylene	0.178	0.00400	"	0.200	ND	88.9	70-130	15.0	20	
Surrogate: 1,2-Dichloroethane-d4	0.13		"	0.125		102	70-130			
Surrogate: Toluene-d8	0.10		"	0.125		83.3	70-130			
Surrogate: 4-Bromofluorobenzene	0.13		"	0.125		102	70-130			

Origins Laboratory, Inc.



The results in this report apply to the samples analyzed in accordance with the chain of custody document. This analytical report must be reproduced in its entirety.

Eagle Environmental Consulting, LLC  
8000 W 44th Ave  
Wheat Ridge CO 80033

Martin C Eckert III  
Project Number: [none]  
Project: Noble - Cody #D #3-7

## Volatile Organic Compounds by GC/MS SW846 8260D - Quality Control

### Origins Laboratory, Inc.

Analyte	Result	Reporting Limit	Units	Spike Level	Source Result	%REC	%REC Limits	RPD	RPD Limit	Notes
---------	--------	-----------------	-------	-------------	---------------	------	-------------	-----	-----------	-------

## Metals by EPA 6000/7000 Series Methods - Quality Control

### Origins Laboratory, Inc.

Analyte	Result	Reporting Limit	Units	Spike Level	Source Result	%REC	%REC Limits	RPD	RPD Limit	Notes
---------	--------	-----------------	-------	-------------	---------------	------	-------------	-----	-----------	-------

#### Batch B3D1703 - EPA 3050B

#### Blank (B3D1703-BLK1)

Prepared: 04/17/2023 Analyzed: 04/17/2023

Barium	ND	0.0100	mg/kg
Lead	ND	0.0100	"
Selenium	ND	0.000100	"

#### LCS (B3D1703-BS1)

Prepared: 04/17/2023 Analyzed: 04/17/2023

Barium	5.35	0.0100	mg/kg	5.00	107	80-120
Lead	0.0523	0.0100	"	0.0500	105	80-120
Selenium	0.0485	0.000100	"	0.0500	97.1	80-120

#### Matrix Spike (B3D1703-MS1)

Source: Y304279-01

Prepared: 04/17/2023 Analyzed: 04/17/2023

Barium	651	8.47	mg/kg	424	177	112	75-125
Lead	20.5	8.47	"	4.24	14.1	150	75-125
Selenium	3.75	0.0847	"	4.24	0.118	85.7	75-125

QM-07

#### Matrix Spike Dup (B3D1703-MSD1)

Source: Y304279-01

Prepared: 04/17/2023 Analyzed: 04/17/2023

Barium	684	9.77	mg/kg	488	177	104	75-125	4.99	20
Lead	20.3	9.77	"	4.88	14.1	125	75-125	1.29	20
Selenium	4.51	0.0977	"	4.88	0.118	89.8	75-125	18.3	20

Origins Laboratory, Inc.



The results in this report apply to the samples analyzed in accordance with the chain of custody document. This analytical report must be reproduced in its entirety.

Eagle Environmental Consulting, LLC  
8000 W 44th Ave  
Wheat Ridge CO 80033

Martin C Eckert III  
Project Number: [none]  
Project: Noble - Cody #D #3-7

**PAH by 8270D SIM - Quality Control**  
**Waypoint Analytical, LLC.**

Analyte	Result	Reporting Limit	Units	Spike Level	Source Result	%REC	%REC Limits	RPD	RPD Limit	Notes
---------	--------	-----------------	-------	-------------	---------------	------	-------------	-----	-----------	-------

**Batch L677191 - 3550B**

MSD (L 98038-MSD-L677191)		Source: 98038			Prepared: 04/20/2023 Analyzed: 04/20/2023					
2-Methylnaphthalene	0.104	0.00201	mg/Kg	0.166	<0.00194	62.6	30-130	9.4	30	
Fluorene	0.108	0.00067	"	0.166	<0.000286	65	30-130	6.6	30	
1-Methylnaphthalene	0.103	0.00201	"	0.166	<0.00109	62	30-130	9.8	30	
Pyrene	0.105	0.00067	"	0.166	<0.000643	63.2	30-130	8.2	30	
Indeno(1,2,3-cd)pyrene	0.12	0.00067	"	0.166	<0.000627	72.2	30-130	4.2	30	
Fluoranthene	0.115	0.00067	"	0.166	<0.000394	69.2	30-130	6.2	30	
Dibenz(a,h)anthracene	0.117	0.00067	"	0.166	<0.000614	70.4	30-130	5.2	30	
Chrysene	0.106	0.00067	"	0.166	<0.000624	63.8	30-130	6.2	30	
Acenaphthene	0.103	0.00067	"	0.166	<0.000304	62	30-130	5.3	30	
Naphthalene	0.102	0.00201	"	0.166	<0.00145	61.4	30-130	11	30	
Benzo(k)fluoranthene	0.0918	0.00067	"	0.166	<0.000437	55.3	30-130	11	30	
Anthracene	0.109	0.00067	"	0.166	<0.000334	65.6	30-130	7.6	30	
Benzo(a)anthracene	0.124	0.00067	"	0.166	<0.000493	74.6	30-130	6.6	30	
Benzo(a)pyrene	0.117	0.00067	"	0.166	<0.000468	70.4	30-130	7	30	
Benzo(b)fluoranthene	0.104	0.00067	"	0.166	<0.000585	62.6	30-130	12.5	30	
Surrogate: 2-Fluorobiphenyl	53.3		"	0.332	145	53.3	33-115			
Surrogate: Nitrobenzene-d5	55.1		"	0.332	151	55.1	29-110			
Surrogate: 4-Terphenyl-d14	56.3		"	0.332	164	56.3	33-122			

MS (L 98038-MS-L677191)		Source: 98038			Prepared: 04/20/2023 Analyzed: 04/20/2023					
Chrysene	0.0996	0.00067	mg/Kg	0.167	<0.000624	59.6	30-130			
Acenaphthene	0.0976	0.00067	"	0.167	<0.000304	58.4	30-130			
Naphthalene	0.0913	0.00201	"	0.167	<0.00145	54.6	30-130			
Indeno(1,2,3-cd)pyrene	0.115	0.00067	"	0.167	<0.000627	68.8	30-130			
Fluorene	0.101	0.00067	"	0.167	<0.000286	60.4	30-130			
Fluoranthene	0.108	0.00067	"	0.167	<0.000394	64.6	30-130			
Dibenz(a,h)anthracene	0.111	0.00067	"	0.167	<0.000614	66.4	30-130			

Origins Laboratory, Inc.



The results in this report apply to the samples analyzed in accordance with the chain of custody document. This analytical report must be reproduced in its entirety.

Eagle Environmental Consulting, LLC  
8000 W 44th Ave  
Wheat Ridge CO 80033

Martin C Eckert III  
Project Number: [none]  
Project: Noble - Cody #D #3-7

**PAH by 8270D SIM - Quality Control**  
**Waypoint Analytical, LLC.**

Analyte	Result	Reporting Limit	Units	Spike Level	Source Result	%REC	%REC Limits	RPD	RPD Limit	Notes
---------	--------	-----------------	-------	-------------	---------------	------	-------------	-----	-----------	-------

**Batch L677191 - 3550B**

MS (L 98038-MS-L677191)		Source: 98038			Prepared: 04/20/2023 Analyzed: 04/20/2023					
Pyrene	0.0967	0.00067	mg/Kg	0.167	<0.000643	57.9	30-130			
Benzo(b)fluoranthene	0.0917	0.00067	"	0.167	<0.000585	54.9	30-130			
Benzo(a)pyrene	0.109	0.00067	"	0.167	<0.000468	65.2	30-130			
Anthracene	0.101	0.00067	"	0.167	<0.000334	60.4	30-130			
2-Methylnaphthalene	0.0946	0.00201	"	0.167	<0.00194	56.6	30-130			
Benzo(k)fluoranthene	0.0822	0.00067	"	0.167	<0.000437	49.2	30-130			
Benzo(a)anthracene	0.116	0.00067	"	0.167	<0.000493	69.4	30-130			
1-Methylnaphthalene	0.0933	0.00201	"	0.167	<0.00109	55.8	30-130			
Surrogate: Nitrobenzene-d5	48.6		"	0.333	151	48.6	29-110			
Surrogate: 2-Fluorobiphenyl	47.7		"	0.333	145	47.7	33-115			
Surrogate: 4-Terphenyl-d14	53.4		"	0.333	164	53.4	33-122			

LCS (LCS-L677191)		Prepared: 04/20/2023 Analyzed: 04/20/2023								
Dibenz(a,h)anthracene	0.132	0.00067	mg/Kg	0.167		79	30-130			
Fluoranthene	0.118	0.00067	"	0.167		70.6	30-130			
Fluorene	0.116	0.00067	"	0.167		69.4	30-130			
Indeno(1,2,3-cd)pyrene	0.137	0.00067	"	0.167		82	30-130			
Naphthalene	0.105	0.00201	"	0.167		62.8	30-130			
Pyrene	0.0972	0.00067	"	0.167		58.2	30-130			
1-Methylnaphthalene	0.108	0.00201	"	0.167		64.6	30-130			
Chrysene	0.113	0.00067	"	0.167		67.6	30-130			
Benzo(b)fluoranthene	0.103	0.00067	"	0.167		61.6	30-130			
Benzo(a)pyrene	0.124	0.00067	"	0.167		74.2	30-130			
Benzo(a)anthracene	0.126	0.00067	"	0.167		75.4	30-130			
Anthracene	0.115	0.00067	"	0.167		68.8	30-130			
Acenaphthene	0.111	0.00067	"	0.167		66.4	30-130			
2-Methylnaphthalene	0.109	0.00201	"	0.167		65.2	30-130			

Origins Laboratory, Inc.



The results in this report apply to the samples analyzed in accordance with the chain of custody document. This analytical report must be reproduced in its entirety.

Eagle Environmental Consulting, LLC  
8000 W 44th Ave  
Wheat Ridge CO 80033

Martin C Eckert III  
Project Number: [none]  
Project: Noble - Cody #D #3-7

## PAH by 8270D SIM - Quality Control Waypoint Analytical, LLC.

Analyte	Result	Reporting Limit	Units	Spike Level	Source Result	%REC	%REC Limits	RPD	RPD Limit	Notes
---------	--------	-----------------	-------	-------------	---------------	------	-------------	-----	-----------	-------

### Batch L677191 - 3550B

#### LCS (LCS-L677191)

Prepared: 04/20/2023 Analyzed: 04/20/2023

Benzo(k)fluoranthene	0.0955	0.00067	mg/Kg	0.167		57.1	30-130			
Surrogate: Nitrobenzene-d5	52.2		"	0.333		52.2	29-110			
Surrogate: 4-Terphenyl-d14	57		"	0.333		57	33-122			
Surrogate: 2-Fluorobiphenyl	55.8		"	0.333		55.8	33-115			

#### LRB (LRB-L677191)

Prepared: 04/20/2023 Analyzed: 04/20/2023

Chrysene	ND	0.00067	mg/Kg				-			
Dibenz(a,h)anthracene	ND	0.00067	"				-			
Fluoranthene	ND	0.00067	"				-			
Fluorene	ND	0.00067	"				-			
Benzo(k)fluoranthene	ND	0.00067	"				-			
Naphthalene	ND	0.00201	"				-			
Indeno(1,2,3-cd)pyrene	ND	0.00067	"				-			
Benzo(b)fluoranthene	ND	0.00067	"				-			
Benzo(a)pyrene	ND	0.00067	"				-			
Benzo(a)anthracene	ND	0.00067	"				-			
Acenaphthene	ND	0.00067	"				-			
2-Methylnaphthalene	ND	0.00201	"				-			
1-Methylnaphthalene	ND	0.00201	"				-			
Pyrene	ND	0.00067	"				-			
Anthracene	ND	0.00067	"				-			
Surrogate: Nitrobenzene-d5	53.7		"	0.333		53.7	29-110			
Surrogate: 4-Terphenyl-d14	63.9		"	0.333		63.9	33-122			
Surrogate: 2-Fluorobiphenyl	52.2		"	0.333		52.2	33-115			

Origins Laboratory, Inc.



The results in this report apply to the samples analyzed in accordance with the chain of custody document. This analytical report must be reproduced in its entirety.

Eagle Environmental Consulting, LLC  
8000 W 44th Ave  
Wheat Ridge CO 80033

Martin C Eckert III  
Project Number: [none]  
Project: Noble - Cody #D #3-7

## Notes and Definitions

U Sample is Non-Detect.

QR-02 The RPD result exceeded the QC control limits; however, both percent recoveries were acceptable. Sample results for the QC batch were accepted based on percent recoveries and completeness of QC data.

QM-07 The spike recovery was outside acceptance limits for the MS and/or MSD. The batch was accepted based on acceptable LCS recovery.

J Estimated Value. Analyte below reported quantitation limit.

ND Analyte NOT DETECTED at or above the reporting limit

RPD Relative Percent Difference

All soil results are reported on a wet weight basis.

Calculated results may use J-flag data (instead of reported "ND") as part of calculation to provide a more accurate result.

Origins Laboratory, Inc.



*The results in this report apply to the samples analyzed in accordance with the chain of custody document. This analytical report must be reproduced in its entirety.*





April 26, 2023

Eagle Environmental Consulting, LLC

Martin C Eckert III

8000 W 44th Ave

Wheat Ridge CO 80033

Project Name - Noble - Cody #D #3-7

Project Number - [none]

Attached are your analytical results for Noble - Cody #D #3-7 received by Origins Laboratory, Inc. April 13, 2023. This project is associated with Origins project number Y304327-01.

The analytical results in the following report were analyzed under the guidelines of EPA Methods. These methods are identified as follows; "SW" are defined in SW-846, "EPA" are defined in 40CFR part 136 and "SM" are defined in the most current revision of Standard Methods For the Examination of Water and Wastewater.

The analytical results apply specifically to the samples and analyses specified per the attached Chain of Custody. As such, this report shall not be reproduced except in full, without the written approval of Origin's laboratory.

Unless otherwise noted, the analytical results for all soil samples are reported on a wet weight basis. All analytical analyses were performed under NELAP guidelines unless noted by a data qualifier.

Any holding time exceedances, deviations from the method specifications or deviations from Origins Laboratory's Standard Operating Procedures are outlined in the case narrative.

Thank you for selecting Origins for your analytical needs. Please contact us with any questions concerning this report, or if we can help with anything at all.

Origins Laboratory, Inc.  
303.433.1322  
o-squad@oelabinc.com



1725 Elk Place, Denver, CO 80211 | Phone: 303.433.1322 | Fax: 303.265.9645

Eagle Environmental Consulting, LLC

8000 W 44th Ave

Wheat Ridge CO 80033

Martin C Eckert III

Project Number: [none]

Project: Noble - Cody #D #3-7

## CROSS REFERENCE REPORT

Sample ID	Laboratory ID	Matrix	Date Sampled	Date Received
Background-01@2.5-4'	Y304327-01	Soil	April 13, 2023 12:40	04/13/2023 16:15
Background-02@2.5-4'	Y304327-02	Soil	April 13, 2023 12:30	04/13/2023 16:15
Background-03@2.5-4'	Y304327-03	Soil	April 13, 2023 11:55	04/13/2023 16:15

Origins Laboratory, Inc.



*The results in this report apply to the samples analyzed in accordance with the chain of custody document. This analytical report must be reproduced in its entirety.*

Eagle Environmental Consulting, LLC  
8000 W 44th Ave  
Wheat Ridge CO 80033

Martin C Eckert III  
Project Number: [none]  
Project: Noble - Cody #D #3-7

www.originslaboratory.com  
page ( of )

4304327

Project Manager: Martin Eckert III  
Project Name: Cody #D #3-7  
Project Number: —  
Samples Collected By: km

Client: Eyle Gumbel Corrally  
Address: 8000 W 44th Ave  
Wheat Ridge CO 80033  
Telephone Number: 303-433-0179  
Email Address: ME3@eagle-environment.com

Sample ID Description	Date Sampled	Time Sampled	# of Containers	Preservative				Matrix			Analysis		Sample Instructions	
				Unpreserved	HCl	HNO <sub>3</sub>	Other	Groundwater	Soil	Air Summa Canister #	Other	Barium Lead - 60208		Selenium - 60208
Boothglen-01 @ 2.5'-4'	4/13/23	1240	2	X				X					1	MDAs needed
Boothglen-02 @ 2.5'-4'	↓	1230	1	↓				↓					2	
Boothglen-03 @ 2.5'-4'	↓	1155	↓	↓									3	
													4	
													5	
													6	
													7	
													8	
													9	
													10	

Relinquished By:	Date:	Time:	Received By:	Date:	Time:	Turnaround Time:
<u>Keeley</u>	4/13/23	1615	<u>WJ</u>	4/13/23	1615	Same Day <input type="checkbox"/> 24 Hr <input type="checkbox"/> 48 Hr <input type="checkbox"/> 72 Hr <input checked="" type="checkbox"/> Standard

Noble

Date Results Needed

25

Temp Received-

\* 1611 to Don

Origins Laboratory, Inc.

*J. Bynon*

The results in this report apply to the samples analyzed in accordance with the chain of custody document. This analytical report must be reproduced in its entirety.

Eagle Environmental Consulting, LLC  
8000 W 44th Ave  
Wheat Ridge CO 80033

Martin C Eckert III  
Project Number: [none]  
Project: Noble - Cody #D #3-7

Origins Laboratory

F-012207-01-R1  
Effective Date: 01/09/12

### Sample Receipt Checklist

Origins Work Order: 4304327

Client: Eagle Environ

Client Project ID: Cody #D #3-7

Checklist Completed by: JHEAS

Shipped Via: HD  
(UPS, FedEx, Hand Delivered, Pick-up, etc.)

Date/time completed: 4/14/23

Airbill #: NA

Matrix(s) Received: (Check all that apply): ☒ Soil/Solid ☐ Water ☐ Other: \_\_\_\_\_

Cooler Number/Temperature: 1 / 25 °C \_\_\_\_\_ / \_\_\_\_\_ °C \_\_\_\_\_ / \_\_\_\_\_ °C (Describe) \_\_\_\_\_ °C

Thermometer ID: 7004

Requirement Description	Yes	No	N/A	Comments (if any)
If samples require cooling, was the temperature between 0°C to ≤ 6°C <sup>(1)</sup> ?	<input checked="" type="checkbox"/>	<input type="checkbox"/>	<input type="checkbox"/>	
Is there ice present (document if blue ice is used)	<input checked="" type="checkbox"/>	<input type="checkbox"/>	<input type="checkbox"/>	
Are custody seals present on cooler? (if so, document in comments if they are signed and dated, broken or intact)	<input type="checkbox"/>	<input checked="" type="checkbox"/>	<input type="checkbox"/>	
Are custody seals present on each sample container? (if so, document in comments if they are signed and dated, broken or intact)	<input type="checkbox"/>	<input checked="" type="checkbox"/>	<input type="checkbox"/>	
Were all samples received intact <sup>(1)</sup> ?	<input checked="" type="checkbox"/>	<input type="checkbox"/>	<input type="checkbox"/>	
Was adequate sample volume provided <sup>(1)</sup> ?	<input checked="" type="checkbox"/>	<input type="checkbox"/>	<input type="checkbox"/>	
Are short holding time analytes or samples with HTs due within 48 hours present <sup>(1)</sup> ?	<input type="checkbox"/>	<input checked="" type="checkbox"/>	<input type="checkbox"/>	
Is a chain-of-custody (COC) present and filled out completely <sup>(1)</sup> ?	<input checked="" type="checkbox"/>	<input type="checkbox"/>	<input type="checkbox"/>	
Does the COC agree with the number and type of sample bottles received <sup>(1)</sup> ?	<input checked="" type="checkbox"/>	<input type="checkbox"/>	<input type="checkbox"/>	
Do the sample IDs on the bottle labels match the COC <sup>(1)</sup> ?	<input checked="" type="checkbox"/>	<input type="checkbox"/>	<input type="checkbox"/>	
Is the COC properly relinquished by the client with date and time recorded <sup>(1)</sup> ?	<input checked="" type="checkbox"/>	<input type="checkbox"/>	<input type="checkbox"/>	
For volatiles in water — is there headspace (> ¼ inch bubble) present? <b>If yes, contact client and note in narrative.</b>	<input type="checkbox"/>	<input checked="" type="checkbox"/>	<input type="checkbox"/>	
Are samples preserved that require preservation and was it checked <sup>(1)</sup> ? (note ID of confirmation instrument used in comments) / (preservation is not confirmed for subcontracted analyses in order to insure sample integrity)/(pH <2 for samples preserved with HNO <sub>3</sub> , HCL, H <sub>2</sub> SO <sub>4</sub> ) / (pH >10 for samples preserved with NaAsO <sub>2</sub> +NaOH, ZnAc+NaOH)	<input type="checkbox"/>	<input checked="" type="checkbox"/>	<input type="checkbox"/>	
Additional Comments (if any):				

<sup>(1)</sup>If NO, then contact the client before proceeding with analysis and note date, time and person contacted as well as the corrective action to in the additional comments (above) and the case narrative.

Reviewed by (Project Manager) [Signature]

Date/Time Reviewed 4/17/23

Origins Laboratory, Inc.

[Signature]

The results in this report apply to the samples analyzed in accordance with the chain of custody document. This analytical report must be reproduced in its entirety.

Eagle Environmental Consulting, LLC  
8000 W 44th Ave  
Wheat Ridge CO 80033

Martin C Eckert III  
Project Number: [none]  
Project: Noble - Cody #D #3-7

**Background-01@2.5-4'**

**4/13/2023 12:40:00PM**

Analyte	Result	Reporting	Units	Dilution	Batch	Analyst	Prepared	Analyzed	Notes
		Limit							

**Origins Laboratory, Inc.**  
**Y304327-01 (Soil)**

**Table 915 metals by EPA 6020B**

Barium	69.5	9.51	mg/kg	10	B3D1715	CIH	04/17/2023	04/19/2023
Lead	ND	9.51	"	"	"	CIH	"	"
Selenium	0.112	0.0951	"	"	"	CIH	"	"

Origins Laboratory, Inc.



*The results in this report apply to the samples analyzed in accordance with the chain of custody document. This analytical report must be reproduced in its entirety.*

Eagle Environmental Consulting, LLC  
8000 W 44th Ave  
Wheat Ridge CO 80033

Martin C Eckert III  
Project Number: [none]  
Project: Noble - Cody #D #3-7

## Background-02@2.5-4'

4/13/2023 12:30:00PM

Analyte	Result	Reporting Limit	Units	Dilution	Batch	Analyst	Prepared	Analyzed	Notes
---------	--------	--------------------	-------	----------	-------	---------	----------	----------	-------

## Origins Laboratory, Inc. Y304327-02 (Soil)

### Table 915 metals by EPA 6020B

Barium	57.8	9.30	mg/kg	10	B3D1715	CIH	04/17/2023	04/19/2023
Lead	ND	9.30	"	"	"	CIH	"	"
Selenium	0.0976	0.0930	"	"	"	CIH	"	"

Origins Laboratory, Inc.



*The results in this report apply to the samples analyzed in accordance with the chain of custody document. This analytical report must be reproduced in its entirety.*



Eagle Environmental Consulting, LLC  
8000 W 44th Ave  
Wheat Ridge CO 80033

Martin C Eckert III  
Project Number: [none]  
Project: Noble - Cody #D #3-7

**Background-03@2.5-4'**

**4/13/2023 11:55:00AM**

Analyte	Result	Reporting		Units	Dilution	Batch	Analyst	Prepared	Analyzed	Notes
		Limit								

**Origins Laboratory, Inc.**  
**Y304327-03 (Soil)**

**Table 915 metals by EPA 6020B**

Barium	29.5	9.05	mg/kg	10	B3D1715	CIH	04/17/2023	04/19/2023
Lead	ND	9.05	"	"	"	CIH	"	"
Selenium	ND	0.0905	"	"	"	CIH	"	"

Origins Laboratory, Inc.



*The results in this report apply to the samples analyzed in accordance with the chain of custody document. This analytical report must be reproduced in its entirety.*

Eagle Environmental Consulting, LLC  
8000 W 44th Ave  
Wheat Ridge CO 80033

Martin C Eckert III  
Project Number: [none]  
Project: Noble - Cody #D #3-7

## Metals by EPA 6000/7000 Series Methods - Quality Control

### Origins Laboratory, Inc.

Analyte	Result	Reporting Limit	Units	Spike Level	Source Result	%REC	%REC Limits	RPD	RPD Limit	Notes
<b>Batch B3D1715 - EPA 3050B</b>										
<b>Blank (B3D1715-BLK1)</b>					Prepared: 04/17/2023 Analyzed: 04/19/2023					
Barium	ND	0.0100	mg/kg							
Lead	ND	0.0100	"							
Selenium	ND	0.000100	"							
<b>LCS (B3D1715-BS1)</b>					Prepared: 04/17/2023 Analyzed: 04/19/2023					
Barium	5.14	0.0100	mg/kg	5.00		103	80-120			
Lead	0.0487	0.0100	"	0.0500		97.4	80-120			
Selenium	0.0477	0.000100	"	0.0500		95.5	80-120			
<b>Matrix Spike (B3D1715-MS1)</b>					<b>Source: Y304327-01</b>		Prepared: 04/17/2023 Analyzed: 04/19/2023			
Arsenic	7.22	0.0914	mg/kg	4.57	2.86	95.5	75-125			
Barium	498	9.14	"	457	69.5	93.8	75-125			
Lead	9.32	9.14	"	4.57	4.44	107	75-125			
Selenium	4.66	0.0914	"	4.57	0.112	99.5	75-125			
<b>Matrix Spike Dup (B3D1715-MSD1)</b>					<b>Source: Y304327-01</b>		Prepared: 04/17/2023 Analyzed: 04/19/2023			
Barium	489	8.95	mg/kg	447	69.5	93.8	75-125	1.80	20	
Lead	8.74	8.95	"	4.47	4.44	96.1	75-125	6.50	20	
Selenium	4.27	0.0895	"	4.47	0.112	92.8	75-125	8.83	20	

Origins Laboratory, Inc.



The results in this report apply to the samples analyzed in accordance with the chain of custody document. This analytical report must be reproduced in its entirety.

Eagle Environmental Consulting, LLC

8000 W 44th Ave

Wheat Ridge CO 80033

Martin C Eckert III

Project Number: [none]

Project: Noble - Cody #D #3-7

### Notes and Definitions

ND Analyte NOT DETECTED at or above the reporting limit

RPD Relative Percent Difference

All soil results are reported at a wet weight basis.

Origins Laboratory, Inc.



*The results in this report apply to the samples analyzed in accordance with the chain of custody document. This analytical report must be reproduced in its entirety.*



April 27, 2023

Eagle Environmental Consulting, LLC

Martin C Eckert III

8000 W 44th Ave

Wheat Ridge CO 80033

Project Name - Noble - Cody #D #3-7

Project Number - [none]

Attached are your analytical results for Noble - Cody #D #3-7 received by Origins Laboratory, Inc. April 17, 2023. This project is associated with Origins project number Y304387-01.

The analytical results in the following report were analyzed under the guidelines of EPA Methods. These methods are identified as follows; "SW" are defined in SW-846, "EPA" are defined in 40CFR part 136 and "SM" are defined in the most current revision of Standard Methods For the Examination of Water and Wastewater.

The analytical results apply specifically to the samples and analyses specified per the attached Chain of Custody. As such, this report shall not be reproduced except in full, without the written approval of Origin's laboratory.

Unless otherwise noted, the analytical results for all soil samples are reported on a wet weight basis. All analytical analyses were performed under NELAP guidelines unless noted by a data qualifier.

Any holding time exceedances, deviations from the method specifications or deviations from Origins Laboratory's Standard Operating Procedures are outlined in the case narrative.

Thank you for selecting Origins for your analytical needs. Please contact us with any questions concerning this report, or if we can help with anything at all.

Origins Laboratory, Inc.  
303.433.1322  
o-squad@oelabinc.com



1725 Elk Place, Denver, CO 80211 | Phone: 303.433.1322 | Fax: 303.265.9645

Eagle Environmental Consulting, LLC

8000 W 44th Ave

Wheat Ridge CO 80033

Martin C Eckert III

Project Number: [none]

Project: Noble - Cody #D #3-7

## CROSS REFERENCE REPORT

Sample ID	Laboratory ID	Matrix	Date Sampled	Date Received
MW-01	Y304387-01	Water	April 17, 2023 11:45	04/17/2023 16:13
MW-02	Y304387-02	Water	April 17, 2023 12:00	04/17/2023 16:13
MW-03	Y304387-03	Water	April 17, 2023 12:15	04/17/2023 16:13
MW-04	Y304387-04	Water	April 17, 2023 12:30	04/17/2023 16:13
MW-05	Y304387-05	Water	April 17, 2023 12:45	04/17/2023 16:13

Origins Laboratory, Inc.



*The results in this report apply to the samples analyzed in accordance with the chain of custody document. This analytical report must be reproduced in its entirety.*

Eagle Environmental Consulting, LLC  
8000 W 44th Ave  
Wheat Ridge CO 80033

Martin C Eckert III  
Project Number: [none]  
Project: Noble - Cody #D #3-7

**ORIGINS**  
LABORATORY, INC

www.originslaboratory.com

4304387 page / of /

Client: Eagle Environmental Consulting  
Address: 8000 W 44th Ave  
Wheat Ridge, CO 80033  
Telephone Number: 303-433-0479  
Email Address: mce@eagle-environment.com

Project Manager: Martin Eckert III  
Project Name: Cody #D #3-7  
Project Number: [blank]  
Samples Collected By: EL

Fax: 303.265.9645

Sample ID Description	Date Sampled	Time Sampled	# of Containers	Preservative				Matrix			Analysis	Sample Instructions
				Unpreserved	HCl	HNO <sub>3</sub>	Other	Groundwater	Soil	Air Summa Canister #		
MW-01	4/17/23	1145	3	X				X				1
MW-02		1200										2
MW-03		1215										3
MW-04		1230										4
MW-05		1245										5
												6
												7
												8
												9
												10

Relinquished By: [Signature] Date: 4/17/23 Time: 1613  
Relinquished By: [Signature] Date: [blank] Time: [blank]

Received By: EHS Date: 4/17/23 Time: 1613  
Received By: [blank] Date: [blank] Time: [blank]

Turnaround Time: Same Day ☐ 24 Hr ☐ 48 Hr ☐ 72 Hr ☒ Standard

Date Results Needed: 4/18/23

Temp Received: 3.4

Bill to Dan

Origins Laboratory, Inc.

*J Bynon*

The results in this report apply to the samples analyzed in accordance with the chain of custody document. This analytical report must be reproduced in its entirety.

Eagle Environmental Consulting, LLC  
8000 W 44th Ave  
Wheat Ridge CO 80033

Martin C Eckert III  
Project Number: [none]  
Project: Noble - Cody #D #3-7

Origins Laboratory

F-012207-01-R1  
Effective Date: 01/09/12

## Sample Receipt Checklist

Origins Work Order: 4304387

Client: Eagle Environ

Client Project ID: Cody #D #3-7

Checklist Completed by: JH19HS

Shipped Via: TD

(UPS, FedEx, Hand Delivered, Pick-up, etc.)

Date/time completed: 4/18/23

Airbill #: na

Matrix(s) Received: (Check all that apply): ☐ Soil/Solid ☒ Water ☐ Other: \_\_\_\_\_

Cooler Number/Temperature: 134 °C 1 °C 1 °C (Describe) °C

Thermometer ID: 7004

Requirement Description	Yes	No	N/A	Comments (if any)
If samples require cooling, was the temperature between 0°C to ≤ 6°C <sup>(1)</sup> ?	/			
Is there ice present (document if blue ice is used)	/			
Are custody seals present on cooler? (if so, document in comments if they are signed and dated, broken or intact)		/		
Are custody seals present on each sample container? (if so, document in comments if they are signed and dated, broken or intact)		/		
Were all samples received intact <sup>(1)</sup> ?	/			
Was adequate sample volume provided <sup>(1)</sup> ?	/			
Are short holding time analytes or samples with HTs due within 48 hours present <sup>(1)</sup> ?		/		
Is a chain-of-custody (COC) present and filled out completely <sup>(1)</sup> ?	/			
Does the COC agree with the number and type of sample bottles received <sup>(1)</sup> ?	/			
Do the sample IDs on the bottle labels match the COC <sup>(1)</sup> ?	/			
Is the COC properly relinquished by the client with date and time recorded <sup>(1)</sup> ?	/			
For volatiles in water – is there headspace (> ¼ inch bubble) present? If yes, contact client and note in narrative.		/		
Are samples preserved that require preservation and was it checked <sup>(1)</sup> ? (note ID of confirmation instrument used in comments) / (preservation is not confirmed for subcontracted analyses in order to insure sample integrity)/(pH <2 for samples preserved with HNO <sub>3</sub> , HCL, H <sub>2</sub> SO <sub>4</sub> ) / (pH >10 for samples preserved with NaAsO <sub>2</sub> +NaOH, ZnAc+NaOH)	/			NC
Additional Comments (if any):				

<sup>(1)</sup> If NO, then contact the client before proceeding with analysis and note date, time and person contacted as well as the corrective action to in the additional comments (above) and the case narrative.

Reviewed by (Project Manager)

4/19/23  
Date/Time Reviewed

Origins Laboratory, Inc.

*J. Bynon*

The results in this report apply to the samples analyzed in accordance with the chain of custody document. This analytical report must be reproduced in its entirety.



Eagle Environmental Consulting, LLC  
8000 W 44th Ave  
Wheat Ridge CO 80033

Martin C Eckert III  
Project Number: [none]  
Project: Noble - Cody #D #3-7

## MW-01

4/17/2023 11:45:00AM

Analyte	Result	Reporting Limit	Units	Dilution	Batch	Analyst	Prepared	Analyzed	Notes
---------	--------	-----------------	-------	----------	-------	---------	----------	----------	-------

## Origins Laboratory, Inc. Y304387-01 (Water)

### BTEX+N+TMBs by 8260D

1,2,4-Trimethylbenzene	ND	2.00	ug/L	1	B3D1806	JSM	04/18/2023	04/18/2023	U
1,3,5-Trimethylbenzene	ND	2.00	"	"	"	JSM	"	"	U
Benzene	ND	1.00	"	"	"	JSM	"	"	U
Ethylbenzene	ND	1.00	"	"	"	JSM	"	"	U
Naphthalene	ND	2.00	"	"	"	JSM	"	"	U
Toluene	ND	1.00	"	"	"	JSM	"	"	U
Xylenes, total	ND	1.00	"	"	"	JSM	"	"	U

Surrogate: 1,2-Dichloroethane-d4	103 %	70-130	"	"	"
Surrogate: Toluene-d8	96.9 %	70-130	"	"	"
Surrogate: 4-Bromofluorobenzene	94.9 %	70-130	"	"	"

Origins Laboratory, Inc.



The results in this report apply to the samples analyzed in accordance with the chain of custody document. This analytical report must be reproduced in its entirety.

Eagle Environmental Consulting, LLC  
8000 W 44th Ave  
Wheat Ridge CO 80033

Martin C Eckert III  
Project Number: [none]  
Project: Noble - Cody #D #3-7

## MW-02

4/17/2023 12:00:00PM

Analyte	Result	Reporting Limit	Units	Dilution	Batch	Analyst	Prepared	Analyzed	Notes
---------	--------	-----------------	-------	----------	-------	---------	----------	----------	-------

## Origins Laboratory, Inc. Y304387-02 (Water)

### BTEX+N+TMBs by 8260D

1,2,4-Trimethylbenzene	ND	2.00	ug/L	1	B3D1806	JSM	04/18/2023	04/18/2023	U
1,3,5-Trimethylbenzene	ND	2.00	"	"	"	JSM	"	"	U
Benzene	ND	1.00	"	"	"	JSM	"	"	U
Ethylbenzene	ND	1.00	"	"	"	JSM	"	"	U
Naphthalene	ND	2.00	"	"	"	JSM	"	"	U
Toluene	ND	1.00	"	"	"	JSM	"	"	U
Xylenes, total	ND	1.00	"	"	"	JSM	"	"	U

Surrogate: 1,2-Dichloroethane-d4	99.5 %	70-130	"	"	"
Surrogate: Toluene-d8	98.4 %	70-130	"	"	"
Surrogate: 4-Bromofluorobenzene	92.6 %	70-130	"	"	"

Origins Laboratory, Inc.



The results in this report apply to the samples analyzed in accordance with the chain of custody document. This analytical report must be reproduced in its entirety.

Eagle Environmental Consulting, LLC  
8000 W 44th Ave  
Wheat Ridge CO 80033

Martin C Eckert III  
Project Number: [none]  
Project: Noble - Cody #D #3-7

## MW-03

4/17/2023 12:15:00PM

Analyte	Result	Reporting Limit	Units	Dilution	Batch	Analyst	Prepared	Analyzed	Notes
---------	--------	-----------------	-------	----------	-------	---------	----------	----------	-------

## Origins Laboratory, Inc. Y304387-03 (Water)

### BTEX+N+TMBs by 8260D

1,2,4-Trimethylbenzene	ND	2.00	ug/L	1	B3D1806	JSM	04/18/2023	04/18/2023	U
1,3,5-Trimethylbenzene	ND	2.00	"	"	"	JSM	"	"	U
Benzene	ND	1.00	"	"	"	JSM	"	"	U
Ethylbenzene	ND	1.00	"	"	"	JSM	"	"	U
Naphthalene	ND	2.00	"	"	"	JSM	"	"	U
Toluene	ND	1.00	"	"	"	JSM	"	"	U
Xylenes, total	ND	1.00	"	"	"	JSM	"	"	U

Surrogate: 1,2-Dichloroethane-d4	104 %	70-130	"	"	"
Surrogate: Toluene-d8	92.7 %	70-130	"	"	"
Surrogate: 4-Bromofluorobenzene	105 %	70-130	"	"	"

Origins Laboratory, Inc.



The results in this report apply to the samples analyzed in accordance with the chain of custody document. This analytical report must be reproduced in its entirety.

Eagle Environmental Consulting, LLC  
8000 W 44th Ave  
Wheat Ridge CO 80033

Martin C Eckert III  
Project Number: [none]  
Project: Noble - Cody #D #3-7

## MW-04

4/17/2023 12:30:00PM

Analyte	Result	Reporting Limit	Units	Dilution	Batch	Analyst	Prepared	Analyzed	Notes
---------	--------	-----------------	-------	----------	-------	---------	----------	----------	-------

## Origins Laboratory, Inc. Y304387-04 (Water)

### BTEX+N+TMBs by 8260D

1,2,4-Trimethylbenzene	ND	2.00	ug/L	1	B3D1806	JSM	04/18/2023	04/18/2023	U
1,3,5-Trimethylbenzene	ND	2.00	"	"	"	JSM	"	"	U
Benzene	ND	1.00	"	"	"	JSM	"	"	U
Ethylbenzene	ND	1.00	"	"	"	JSM	"	"	U
Naphthalene	ND	2.00	"	"	"	JSM	"	"	U
Toluene	ND	1.00	"	"	"	JSM	"	"	U
Xylenes, total	ND	1.00	"	"	"	JSM	"	"	U

Surrogate: 1,2-Dichloroethane-d4	107 %	70-130	"	"	"
Surrogate: Toluene-d8	92.3 %	70-130	"	"	"
Surrogate: 4-Bromofluorobenzene	107 %	70-130	"	"	"

Origins Laboratory, Inc.



The results in this report apply to the samples analyzed in accordance with the chain of custody document. This analytical report must be reproduced in its entirety.

Eagle Environmental Consulting, LLC  
8000 W 44th Ave  
Wheat Ridge CO 80033

Martin C Eckert III  
Project Number: [none]  
Project: Noble - Cody #D #3-7

## MW-05

4/17/2023 12:45:00PM

Analyte	Result	Reporting Limit	Units	Dilution	Batch	Analyst	Prepared	Analyzed	Notes
---------	--------	-----------------	-------	----------	-------	---------	----------	----------	-------

## Origins Laboratory, Inc. Y304387-05 (Water)

### BTEX+N+TMBs by 8260D

1,2,4-Trimethylbenzene	ND	2.00	ug/L	1	B3D1806	JSM	04/18/2023	04/18/2023	U
1,3,5-Trimethylbenzene	ND	2.00	"	"	"	JSM	"	"	U
Benzene	ND	1.00	"	"	"	JSM	"	"	U
Ethylbenzene	ND	1.00	"	"	"	JSM	"	"	U
Naphthalene	ND	2.00	"	"	"	JSM	"	"	U
Toluene	ND	1.00	"	"	"	JSM	"	"	U
Xylenes, total	ND	1.00	"	"	"	JSM	"	"	U

Surrogate: 1,2-Dichloroethane-d4	107 %	70-130	"	"	"
Surrogate: Toluene-d8	93.5 %	70-130	"	"	"
Surrogate: 4-Bromofluorobenzene	105 %	70-130	"	"	"

Origins Laboratory, Inc.



The results in this report apply to the samples analyzed in accordance with the chain of custody document. This analytical report must be reproduced in its entirety.

Eagle Environmental Consulting, LLC  
8000 W 44th Ave  
Wheat Ridge CO 80033

Martin C Eckert III  
Project Number: [none]  
Project: Noble - Cody #D #3-7

## Volatile Organic Compounds by GC/MS SW846 8260D - Quality Control

### Origins Laboratory, Inc.

Analyte	Result	Reporting Limit	Units	Spike Level	Source Result	%REC	%REC Limits	RPD	RPD Limit	Notes
Batch B3D1806 - EPA 5030B (Water)										
Blank (B3D1806-BLK1)					Prepared: 04/18/2023 Analyzed: 04/18/2023					
1,2,4-Trimethylbenzene	ND	2.00	ug/L							U
1,3,5-Trimethylbenzene	ND	2.00	"							U
Benzene	ND	1.00	"							U
Ethylbenzene	ND	1.00	"							U
Naphthalene	ND	2.00	"							U
Toluene	ND	1.00	"							U
Xylenes, total	ND	1.00	"							U
Surrogate: 1,2-Dichloroethane-d4	63		"	62.5		101	70-130			
Surrogate: Toluene-d8	64		"	62.5		103	70-130			
Surrogate: 4-Bromofluorobenzene	54		"	62.5		87.0	70-130			

Origins Laboratory, Inc.



The results in this report apply to the samples analyzed in accordance with the chain of custody document. This analytical report must be reproduced in its entirety.

Eagle Environmental Consulting, LLC  
8000 W 44th Ave  
Wheat Ridge CO 80033

Martin C Eckert III  
Project Number: [none]  
Project: Noble - Cody #D #3-7

## Volatile Organic Compounds by GC/MS SW846 8260D - Quality Control

### Origins Laboratory, Inc.

Analyte	Result	Reporting Limit	Units	Spike Level	Source Result	%REC	%REC Limits	RPD	RPD Limit	Notes
Batch B3D1806 - EPA 5030B (Water)										
LCS (B3D1806-BS1)					Prepared: 04/18/2023 Analyzed: 04/18/2023					
1,2,4-Trimethylbenzene	46.8	2.00	ug/L	50.0		93.6	70-130			
1,3,5-Trimethylbenzene	47.7	2.00	"	50.0		95.4	70-130			
Benzene	45.7	1.00	"	50.0		91.5	70-130			
Ethylbenzene	41.2	1.00	"	50.0		82.4	70-130			
m,p-Xylene	86.2	2.00	"	100		86.2	70-130			
Naphthalene	48.7	2.00	"	50.0		97.4	70-130			
o-Xylene	41.1	1.00	"	50.0		82.3	70-130			
Toluene	50.6	1.00	"	50.0		101	70-130			
Surrogate: 1,2-Dichloroethane-d4	63		"	62.5		101	70-130			
Surrogate: Toluene-d8	62		"	62.5		99.3	70-130			
Surrogate: 4-Bromofluorobenzene	55		"	62.5		88.3	70-130			

Origins Laboratory, Inc.



The results in this report apply to the samples analyzed in accordance with the chain of custody document. This analytical report must be reproduced in its entirety.



Eagle Environmental Consulting, LLC  
8000 W 44th Ave  
Wheat Ridge CO 80033

Martin C Eckert III  
Project Number: [none]  
Project: Noble - Cody #D #3-7

## Volatile Organic Compounds by GC/MS SW846 8260D - Quality Control

### Origins Laboratory, Inc.

Analyte	Result	Reporting Limit	Units	Spike Level	Source Result	%REC	%REC Limits	RPD	RPD Limit	Notes
Batch B3D1806 - EPA 5030B (Water)										
Matrix Spike (B3D1806-MS1)		Source: Y304358-01			Prepared: 04/18/2023 Analyzed: 04/18/2023					
1,2,4-Trimethylbenzene	50.1	2.00	ug/L	50.0	ND	100	70-130			
1,3,5-Trimethylbenzene	52.5	2.00	"	50.0	ND	105	70-130			
Benzene	50.1	1.00	"	50.0	ND	100	70-130			
Ethylbenzene	49.2	1.00	"	50.0	ND	98.5	70-130			
m,p-Xylene	103	2.00	"	100	ND	103	70-130			
Naphthalene	44.4	2.00	"	50.0	ND	88.9	70-130			
o-Xylene	48.1	1.00	"	50.0	ND	96.2	70-130			
Toluene	55.1	1.00	"	50.0	ND	110	70-130			
Surrogate: 1,2-Dichloroethane-d4	63		"	62.5		101	70-130			
Surrogate: Toluene-d8	63		"	62.5		100	70-130			
Surrogate: 4-Bromofluorobenzene	62		"	62.5		99.1	70-130			

Origins Laboratory, Inc.



The results in this report apply to the samples analyzed in accordance with the chain of custody document. This analytical report must be reproduced in its entirety.

Eagle Environmental Consulting, LLC  
8000 W 44th Ave  
Wheat Ridge CO 80033

Martin C Eckert III  
Project Number: [none]  
Project: Noble - Cody #D #3-7

**Volatile Organic Compounds by GC/MS SW846 8260D - Quality Control**  
**Origins Laboratory, Inc.**

Analyte	Result	Reporting Limit	Units	Spike Level	Source Result	%REC	%REC Limits	RPD	RPD Limit	Notes
<b>Batch B3D1806 - EPA 5030B (Water)</b>										
<b>Matrix Spike Dup (B3D1806-MSD1)</b>	<b>Source: Y304358-01</b>				Prepared: 04/18/2023 Analyzed: 04/18/2023					
1,2,4-Trimethylbenzene	48.6	2.00	ug/L	50.0	ND	97.3	70-130	2.96	20	
1,3,5-Trimethylbenzene	50.2	2.00	"	50.0	ND	100	70-130	4.36	20	
Benzene	49.7	1.00	"	50.0	ND	99.4	70-130	0.721	20	
Ethylbenzene	47.7	1.00	"	50.0	ND	95.5	70-130	3.11	20	
m,p-Xylene	100	2.00	"	100	ND	100	70-130	2.38	20	
Naphthalene	44.8	2.00	"	50.0	ND	89.7	70-130	0.896	20	
o-Xylene	45.5	1.00	"	50.0	ND	90.9	70-130	5.62	20	
Toluene	54.6	1.00	"	50.0	ND	109	70-130	0.821	20	
Surrogate: 1,2-Dichloroethane-d4	63		"	62.5		100	70-130			
Surrogate: Toluene-d8	62		"	62.5		99.4	70-130			
Surrogate: 4-Bromofluorobenzene	62		"	62.5		98.8	70-130			

Origins Laboratory, Inc.



*The results in this report apply to the samples analyzed in accordance with the chain of custody document. This analytical report must be reproduced in its entirety.*

Eagle Environmental Consulting, LLC

8000 W 44th Ave

Wheat Ridge CO 80033

Martin C Eckert III

Project Number: [none]

Project: Noble - Cody #D #3-7

### Notes and Definitions

U Sample is Non-Detect.

ND Analyte NOT DETECTED at or above the reporting limit

RPD Relative Percent Difference

All soil results are reported at a wet weight basis.

Origins Laboratory, Inc.



*The results in this report apply to the samples analyzed in accordance with the chain of custody document. This analytical report must be reproduced in its entirety.*



April 27, 2023

Eagle Environmental Consulting, LLC

Martin C Eckert III

8000 W 44th Ave

Wheat Ridge CO 80033

Project Name - Noble - Cody #D #3-7

Project Number - [none]

Attached are your analytical results for Noble - Cody #D #3-7 received by Origins Laboratory, Inc. April 17, 2023. This project is associated with Origins project number Y304388-01.

The analytical results in the following report were analyzed under the guidelines of EPA Methods. These methods are identified as follows; "SW" are defined in SW-846, "EPA" are defined in 40CFR part 136 and "SM" are defined in the most current revision of Standard Methods For the Examination of Water and Wastewater.

The analytical results apply specifically to the samples and analyses specified per the attached Chain of Custody. As such, this report shall not be reproduced except in full, without the written approval of Origin's laboratory.

Unless otherwise noted, the analytical results for all soil samples are reported on a wet weight basis. All analytical analyses were performed under NELAP guidelines unless noted by a data qualifier.

Any holding time exceedances, deviations from the method specifications or deviations from Origins Laboratory's Standard Operating Procedures are outlined in the case narrative.

Thank you for selecting Origins for your analytical needs. Please contact us with any questions concerning this report, or if we can help with anything at all.

Origins Laboratory, Inc.  
303.433.1322  
o-squad@oelabinc.com



1725 Elk Place, Denver, CO 80211 | Phone: 303.433.1322 | Fax: 303.265.9645

Eagle Environmental Consulting, LLC  
8000 W 44th Ave  
Wheat Ridge CO 80033

Martin C Eckert III  
Project Number: [none]  
Project: Noble - Cody #D #3-7

## CROSS REFERENCE REPORT

Sample ID	Laboratory ID	Matrix	Date Sampled	Date Received
MW-01	Y304388-01	Water	April 17, 2023 11:45	04/17/2023 16:13
MW-02	Y304388-02	Water	April 17, 2023 12:00	04/17/2023 16:13
MW-03	Y304388-03	Water	April 17, 2023 12:15	04/17/2023 16:13
MW-04	Y304388-04	Water	April 17, 2023 12:30	04/17/2023 16:13
MW-05	Y304388-05	Water	April 17, 2023 12:45	04/17/2023 16:13

Origins Laboratory, Inc.



*The results in this report apply to the samples analyzed in accordance with the chain of custody document. This analytical report must be reproduced in its entirety.*





Eagle Environmental Consulting, LLC  
8000 W 44th Ave  
Wheat Ridge CO 80033

Martin C Eckert III  
Project Number: [none]  
Project: Noble - Cody #D #3-7

Origins Laboratory

F-012207-01-R1  
Effective Date: 01/09/12

## Sample Receipt Checklist

Origins Work Order: 4304288

Client: Eagle Environ  
Client Project ID: Cody #D #3-7

Checklist Completed by: JSN/EWS

Shipped Via: HD  
(UPS, FedEx, Hand Delivered, Pick-up, etc.)

Date/time completed: 4/18/23

Airbill #: NA

Matrix(s) Received: (Check all that apply): Soil/Solid ☒ Water ☐ Other: ☐

Cooler Number/Temperature: 1,34 °C / °C / °C / °C (Describe)

Thermometer ID: TD04

Requirement Description	Yes	No	N/A	Comments (if any)
If samples require cooling, was the temperature between 0°C to ≤ 6°C <sup>(1)</sup> ?	<input checked="" type="checkbox"/>	<input type="checkbox"/>	<input type="checkbox"/>	
Is there ice present (document if blue ice is used)	<input checked="" type="checkbox"/>	<input type="checkbox"/>	<input type="checkbox"/>	
Are custody seals present on cooler? (if so, document in comments if they are signed and dated, broken or intact)	<input type="checkbox"/>	<input checked="" type="checkbox"/>	<input type="checkbox"/>	
Are custody seals present on each sample container? (if so, document in comments if they are signed and dated, broken or intact)	<input type="checkbox"/>	<input checked="" type="checkbox"/>	<input type="checkbox"/>	
Were all samples received intact <sup>(1)</sup> ?	<input checked="" type="checkbox"/>	<input type="checkbox"/>	<input type="checkbox"/>	
Was adequate sample volume provided <sup>(1)</sup> ?	<input checked="" type="checkbox"/>	<input type="checkbox"/>	<input type="checkbox"/>	
Are short holding time analytes or samples with HTs due within 48 hours present <sup>(1)</sup> ?	<input type="checkbox"/>	<input checked="" type="checkbox"/>	<input type="checkbox"/>	
Is a chain-of-custody (COC) present and filled out completely <sup>(1)</sup> ?	<input checked="" type="checkbox"/>	<input type="checkbox"/>	<input type="checkbox"/>	
Does the COC agree with the number and type of sample bottles received <sup>(1)</sup> ?	<input checked="" type="checkbox"/>	<input type="checkbox"/>	<input type="checkbox"/>	
Do the sample IDs on the bottle labels match the COC <sup>(1)</sup> ?	<input checked="" type="checkbox"/>	<input type="checkbox"/>	<input type="checkbox"/>	
Is the COC properly relinquished by the client with date and time recorded <sup>(1)</sup> ?	<input checked="" type="checkbox"/>	<input type="checkbox"/>	<input type="checkbox"/>	
For volatiles in water – is there headspace (> ¼ inch bubble) present? If yes, contact client and note in narrative.	<input type="checkbox"/>	<input type="checkbox"/>	<input checked="" type="checkbox"/>	
Are samples preserved that require preservation and was it checked <sup>(1)</sup> ? (note ID of confirmation instrument used in comments) / (preservation is not confirmed for subcontracted analyses in order to insure sample integrity)/(pH <2 for samples preserved with HNO <sub>3</sub> , HCL, H <sub>2</sub> SO <sub>4</sub> ) / (pH >10 for samples preserved with NaAsO <sub>2</sub> +NaOH, ZnAc+NaOH)	<input type="checkbox"/>	<input type="checkbox"/>	<input checked="" type="checkbox"/>	
Additional Comments (if any):				

<sup>(1)</sup> If NO, then contact the client before proceeding with analysis and note date/time and person contacted as well as the corrective action to in the additional comments (above) and the case narrative.

Reviewed by (Project Manager)

Date/Time Reviewed 4/19/23

Origins Laboratory, Inc.

*J. Bynon*

The results in this report apply to the samples analyzed in accordance with the chain of custody document. This analytical report must be reproduced in its entirety.



Eagle Environmental Consulting, LLC  
8000 W 44th Ave  
Wheat Ridge CO 80033

Martin C Eckert III  
Project Number: [none]  
Project: Noble - Cody #D #3-7

## MW-01

4/17/2023 11:45:00AM

Analyte	Result	Reporting Limit	Units	Dilution	Batch	Analyst	Prepared	Analyzed	Notes
---------	--------	--------------------	-------	----------	-------	---------	----------	----------	-------

## Origins Laboratory, Inc. Y304388-01 (Water)

### Anions by IC 300.0

Chloride	204	31.2	mg/L	125	B3D1803	ACC	04/18/2023	04/18/2023	
Sulfate	1650	31.2	"	"	"	ACC	"	"	

### Total Dissolved Solids by 2540C

Total Dissolved Solids	2540	5.00	"	1	B3D2019	SCL	04/20/2023	04/20/2023	
------------------------	------	------	---	---	---------	-----	------------	------------	--

Origins Laboratory, Inc.



*The results in this report apply to the samples analyzed in accordance with the chain of custody document. This analytical report must be reproduced in its entirety.*

Eagle Environmental Consulting, LLC  
8000 W 44th Ave  
Wheat Ridge CO 80033

Martin C Eckert III  
Project Number: [none]  
Project: Noble - Cody #D #3-7

MW-02

4/17/2023 12:00:00PM

Analyte	Result	Reporting Limit	Units	Dilution	Batch	Analyst	Prepared	Analyzed	Notes
---------	--------	--------------------	-------	----------	-------	---------	----------	----------	-------

Origins Laboratory, Inc.  
Y304388-02 (Water)

Anions by IC 300.0

Chloride	126	31.2	mg/L	125	B3D1803	ACC	04/18/2023	04/18/2023	
Sulfate	1360	31.2	"	"	"	ACC	"	"	

Total Dissolved Solids by 2540C

Total Dissolved Solids	2400	5.00	"	1	B3D2019	SCL	04/20/2023	04/20/2023	
------------------------	------	------	---	---	---------	-----	------------	------------	--

Origins Laboratory, Inc.



The results in this report apply to the samples analyzed in accordance with the chain of custody document. This analytical report must be reproduced in its entirety.

Eagle Environmental Consulting, LLC  
8000 W 44th Ave  
Wheat Ridge CO 80033

Martin C Eckert III  
Project Number: [none]  
Project: Noble - Cody #D #3-7

**MW-03**

**4/17/2023 12:15:00PM**

Analyte	Result	Reporting Limit	Units	Dilution	Batch	Analyst	Prepared	Analyzed	Notes
---------	--------	--------------------	-------	----------	-------	---------	----------	----------	-------

**Origins Laboratory, Inc.**  
**Y304388-04 (Water)**

**Anions by IC 300.0**

Chloride	154	31.2	mg/L	125	B3D1803	ACC	04/18/2023	04/18/2023	
Sulfate	1350	31.2	"	"	"	ACC	"	"	

**Total Dissolved Solids by 2540C**

Total Dissolved Solids	2540	5.00	"	1	B3D2020	SCL	04/20/2023	04/20/2023	
------------------------	------	------	---	---	---------	-----	------------	------------	--

Origins Laboratory, Inc.



*The results in this report apply to the samples analyzed in accordance with the chain of custody document. This analytical report must be reproduced in its entirety.*

Eagle Environmental Consulting, LLC  
8000 W 44th Ave  
Wheat Ridge CO 80033

Martin C Eckert III  
Project Number: [none]  
Project: Noble - Cody #D #3-7

## MW-04

4/17/2023 12:30:00PM

Analyte	Result	Reporting Limit	Units	Dilution	Batch	Analyst	Prepared	Analyzed	Notes
---------	--------	-----------------	-------	----------	-------	---------	----------	----------	-------

## Origins Laboratory, Inc. Y304388-04 (Water)

### Anions by IC 300.0

Chloride	166	31.2	mg/L	125	B3D1803	ACC	04/18/2023	04/18/2023	
Sulfate	1200	31.2	"	"	"	ACC	"	"	

### Total Dissolved Solids by 2540C

Total Dissolved Solids	2280	5.00	"	1	B3D2020	SCL	04/20/2023	04/20/2023	
------------------------	------	------	---	---	---------	-----	------------	------------	--

Origins Laboratory, Inc.



*The results in this report apply to the samples analyzed in accordance with the chain of custody document. This analytical report must be reproduced in its entirety.*

Eagle Environmental Consulting, LLC  
8000 W 44th Ave  
Wheat Ridge CO 80033

Martin C Eckert III  
Project Number: [none]  
Project: Noble - Cody #D #3-7

MW-05

4/17/2023 12:45:00PM

Analyte	Result	Reporting Limit	Units	Dilution	Batch	Analyst	Prepared	Analyzed	Notes
---------	--------	--------------------	-------	----------	-------	---------	----------	----------	-------

Origins Laboratory, Inc.  
Y304388-05 (Water)

Anions by IC 300.0

Chloride	145	31.2	mg/L	125	B3D1803	ACC	04/18/2023	04/18/2023	
Sulfate	1330	31.2	"	"	"	ACC	"	"	

Total Dissolved Solids by 2540C

Total Dissolved Solids	2440	5.00	"	1	B3D2020	SCL	04/20/2023	04/20/2023	
------------------------	------	------	---	---	---------	-----	------------	------------	--

Origins Laboratory, Inc.



The results in this report apply to the samples analyzed in accordance with the chain of custody document. This analytical report must be reproduced in its entirety.

Eagle Environmental Consulting, LLC  
8000 W 44th Ave  
Wheat Ridge CO 80033

Martin C Eckert III  
Project Number: [none]  
Project: Noble - Cody #D #3-7

## Classical Chemistry Parameters - Quality Control Origins Laboratory, Inc.

Analyte	Result	Reporting Limit	Units	Spike Level	Source Result	%REC	%REC Limits	RPD	RPD Limit	Notes
<b>Batch B3D1803 - Filter .45um non acidified</b>										
<b>Blank (B3D1803-BLK1)</b>					Prepared: 04/18/2023 Analyzed: 04/20/2023					
Chloride	ND	0.250	mg/L							U
Sulfate	ND	0.250	"							U
<b>LCS (B3D1803-BS1)</b>					Prepared: 04/18/2023 Analyzed: 04/20/2023					
Chloride	4.30	0.250	mg/L	4.00		108	90-110			
Sulfate	4.38	0.250	"	4.00		110	90-110			
<b>Matrix Spike (B3D1803-MS1)</b>					<b>Source: Y304357-03</b>		Prepared: 04/18/2023 Analyzed: 04/20/2023			
Chloride	686		mg/L	500	175	102	90-110			
Sulfate	721		"	500	204	103	90-110			
<b>Matrix Spike Dup (B3D1803-MSD1)</b>					<b>Source: Y304357-03</b>		Prepared: 04/18/2023 Analyzed: 04/20/2023			
Chloride	681		mg/L	500	175	101	90-110	0.750	5	
Sulfate	717		"	500	204	103	90-110	0.610	5	
<b>Batch B3D2019 - NO PREP</b>										
<b>Blank (B3D2019-BLK1)</b>					Prepared: 04/20/2023 Analyzed: 04/20/2023					
Total Dissolved Solids	ND	5.00	mg/L							
<b>LCS (B3D2019-BS1)</b>					Prepared: 04/20/2023 Analyzed: 04/20/2023					
Total Dissolved Solids	914	5.00	mg/L	1010		90.5	90-110			
<b>Duplicate (B3D2019-DUP1)</b>					<b>Source: Y304381-16</b>		Prepared: 04/20/2023 Analyzed: 04/20/2023			
Total Dissolved Solids	1760	5.00	mg/L		1760			0.113	10	

Origins Laboratory, Inc.



The results in this report apply to the samples analyzed in accordance with the chain of custody document. This analytical report must be reproduced in its entirety.

Eagle Environmental Consulting, LLC  
8000 W 44th Ave  
Wheat Ridge CO 80033

Martin C Eckert III  
Project Number: [none]  
Project: Noble - Cody #D #3-7

**Classical Chemistry Parameters - Quality Control**  
**Origins Laboratory, Inc.**

Analyte	Result	Reporting Limit	Units	Spike Level	Source Result	%REC	%REC Limits	RPD	RPD Limit	Notes
<b>Batch B3D2020 - NO PREP</b>										
<b>Blank (B3D2020-BLK1)</b>					Prepared: 04/20/2023 Analyzed: 04/20/2023					
Total Dissolved Solids	ND	5.00	mg/L							
<b>LCS (B3D2020-BS1)</b>					Prepared: 04/20/2023 Analyzed: 04/20/2023					
Total Dissolved Solids	1020	5.00	mg/L	1010		101	90-110			
<b>Duplicate (B3D2020-DUP1)</b>					Prepared: 04/20/2023 Analyzed: 04/20/2023					
		<b>Source: Y304428-02</b>								
Total Dissolved Solids	5920	5.00	mg/L		5920			0.0845	10	

Origins Laboratory, Inc.



*The results in this report apply to the samples analyzed in accordance with the chain of custody document. This analytical report must be reproduced in its entirety.*



Eagle Environmental Consulting, LLC  
8000 W 44th Ave  
Wheat Ridge CO 80033

Martin C Eckert III  
Project Number: [none]  
Project: Noble - Cody #D #3-7

### Notes and Definitions

U Sample is Non-Detect.

ND Analyte NOT DETECTED at or above the reporting limit

RPD Relative Percent Difference

All soil results are reported at a wet weight basis.

Origins Laboratory, Inc.



*The results in this report apply to the samples analyzed in accordance with the chain of custody document. This analytical report must be reproduced in its entirety.*



April 21, 2023

Eagle Environmental Consulting, LLC

Martin C Eckert III

8000 W 44th Ave

Wheat Ridge CO 80033

Project Name - Noble - Cody #D #3-7

Project Number - [none]

Attached are your analytical results for Noble - Cody #D #3-7 received by Origins Laboratory, Inc. April 17, 2023. This project is associated with Origins project number Y304389-01.

The analytical results in the following report were analyzed under the guidelines of EPA Methods. These methods are identified as follows; "SW" are defined in SW-846, "EPA" are defined in 40CFR part 136 and "SM" are defined in the most current revision of Standard Methods For the Examination of Water and Wastewater.

The analytical results apply specifically to the samples and analyses specified per the attached Chain of Custody. As such, this report shall not be reproduced except in full, without the written approval of Origin's laboratory.

Unless otherwise noted, the analytical results for all soil samples are reported on a wet weight basis. All analytical analyses were performed under NELAP guidelines unless noted by a data qualifier.

Any holding time exceedances, deviations from the method specifications or deviations from Origins Laboratory's Standard Operating Procedures are outlined in the case narrative.

Thank you for selecting Origins for your analytical needs. Please contact us with any questions concerning this report, or if we can help with anything at all.

Origins Laboratory, Inc.  
303.433.1322  
o-squad@oelabinc.com



1725 Elk Place, Denver, CO 80211 | Phone: 303.433.1322 | Fax: 303.265.9645

Eagle Environmental Consulting, LLC  
8000 W 44th Ave  
Wheat Ridge CO 80033

Martin C Eckert III  
Project Number: [none]  
Project: Noble - Cody #D #3-7

## CROSS REFERENCE REPORT

Sample ID	Laboratory ID	Matrix	Date Sampled	Date Received
MW-01	Y304389-01	Water	April 17, 2023 11:45	04/17/2023 16:13
MW-02	Y304389-02	Water	April 17, 2023 12:00	04/17/2023 16:13
MW-03	Y304389-03	Water	April 17, 2023 12:15	04/17/2023 16:13
MW-04	Y304389-04	Water	April 17, 2023 12:30	04/17/2023 16:13
MW-05	Y304389-05	Water	April 17, 2023 12:45	04/17/2023 16:13

Origins Laboratory, Inc.



*The results in this report apply to the samples analyzed in accordance with the chain of custody document. This analytical report must be reproduced in its entirety.*

Eagle Environmental Consulting, LLC  
8000 W 44th Ave  
Wheat Ridge CO 80033

Martin C Eckert III  
Project Number: [none]  
Project: Noble - Cody #D #3-7

www.originslaboratory.com  
page 1 of 1

4304389

Client: Eagle Environmental Consulting  
Address: 8000 W 44th Ave  
Wheat Ridge, CO 80033  
Telephone Number: 303-433-0479  
Email Address: m.c.eckert@originslab.com

Project Manager: Martin Eckert III  
Project Name: Cody #D #3-7  
Project Number:  
Samples Collected By: EL

Sample ID Description	Date Sampled	Time Sampled	# of Containers	Preservative				Matrix			Analysis	Sample Instructions	
				Unpreserved	HCl	HNO <sub>3</sub>	Other	Groundwater	Soil	Air Summa Canister #			Other
MW-01	4/17/23	1145	2	X				X				1	
MW-02		1200										2	
MW-03		1215										3	
MW-04		1230										4	
MW-05		1245										5	
												6	
												7	
												8	
												9	
												10	

Relinquished By: [Signature] Date: 4/17/23 Time: 1613  
Relinquished By: [Signature] Date: 4/17/23 Time: 1613

Received By: EHS Date: 4/17/23 Time: 1613  
Received By: [Signature] Date: 4/17/23 Time: 1613

Turnaround Time: Same Day ☐ 24 Hr ☐ 48 Hr ☐ 72 Hr ☒ Standard

Date Results Needed: 4/17/23

Temp Received: 34

4/16/11 5:00 PM

Origins Laboratory, Inc.

*Bynon*

The results in this report apply to the samples analyzed in accordance with the chain of custody document. This analytical report must be reproduced in its entirety.

Eagle Environmental Consulting, LLC  
8000 W 44th Ave  
Wheat Ridge CO 80033

Martin C Eckert III  
Project Number: [none]  
Project: Noble - Cody #D #3-7

Origins Laboratory

F-012207-01-R1  
Effective Date: 01/09/12

## Sample Receipt Checklist

Origins Work Order: 4304389

Client: Eagle Environ

Client Project ID: Cody #D #3-7

Checklist Completed by: JH/CWS

Shipped Via: TD

(UPS, FedEx, Hand Delivered, Pick-up, etc.)

Date/time completed: 4/19/23

Airbill #: N/A

Matrix(s) Received: (Check all that apply): Soil/Solid X Water Other:

Cooler Number/Temperature: 134 °C / °C / °C (Describe) °C

Thermometer ID: 7004

Requirement Description	Yes	No	N/A	Comments (if any)
If samples require cooling, was the temperature between 0°C to ≤ 6°C <sup>(1)</sup> ?	/			
Is there ice present (document if blue ice is used)	/			
Are custody seals present on cooler? (if so, document in comments if they are signed and dated, broken or intact)		/		
Are custody seals present on each sample container? (if so, document in comments if they are signed and dated, broken or intact)		/		
Were all samples received intact <sup>(1)</sup> ?	/			
Was adequate sample volume provided <sup>(1)</sup> ?	/			
Are short holding time analytes or samples with HTs due within 48 hours present <sup>(1)</sup> ?		/		
Is a chain-of-custody (COC) present and filled out completely <sup>(1)</sup> ?	/			
Does the COC agree with the number and type of sample bottles received <sup>(1)</sup> ?	/			
Do the sample IDs on the bottle labels match the COC <sup>(1)</sup> ?	/			
Is the COC properly relinquished by the client with date and time recorded <sup>(1)</sup> ?	/			
For volatiles in water – is there headspace (> ¼ inch bubble) present? If yes, contact client and note in narrative.			/	
Are samples preserved that require preservation and was it checked <sup>(1)</sup> ? (note ID of confirmation instrument used in comments) / (preservation is not confirmed for subcontracted analyses in order to insure sample integrity) / (pH < 2 for samples preserved with HNO <sub>3</sub> , HCL, H <sub>2</sub> SO <sub>4</sub> ) / (pH > 10 for samples preserved with NaAsO <sub>2</sub> +NaOH, ZnAc+NaOH)			/	
Additional Comments (if any):				

<sup>(1)</sup> If NO, then contact the client before proceeding with analysis and note date/time and person contacted as well as the corrective action to in the additional comments (above) and the case narrative.

Reviewed by (Project Manager) [Signature]

4/19/23  
Date/Time Reviewed

Origins Laboratory, Inc.

[Signature]

The results in this report apply to the samples analyzed in accordance with the chain of custody document. This analytical report must be reproduced in its entirety.

Eagle Environmental Consulting, LLC  
8000 W 44th Ave  
Wheat Ridge CO 80033

Martin C Eckert III  
Project Number: [none]  
Project: Noble - Cody #D #3-7

## MW-01

4/17/2023 11:45:00AM

Analyte	Result	Min Detection Limit	Reporting Limit	Units	Dilution	Batch	Prepared	Analyzed	Notes
---------	--------	---------------------	-----------------	-------	----------	-------	----------	----------	-------

## Waypoint Analytical, LLC.

Y304389-01 (Water)

### PAH by 8270D SIM

1-Methylnaphthalene	ND	0.0076	0.02	µg/L	1	L677354	04/20/2023	04/20/2023
2-Methylnaphthalene	ND	0.0185	0.02	"	"	"	"	"
Benzo(a)anthracene	ND	0.0113	0.02	"	"	"	"	"

Surrogate: 2-Fluorobiphenyl	93.1 %	70-130	"	"	"
Surrogate: 4-Terphenyl-d14	121 %	70-130	"	"	"

Origins Laboratory, Inc.



The results in this report apply to the samples analyzed in accordance with the chain of custody document. This analytical report must be reproduced in its entirety.



Eagle Environmental Consulting, LLC  
8000 W 44th Ave  
Wheat Ridge CO 80033

Martin C Eckert III  
Project Number: [none]  
Project: Noble - Cody #D #3-7

## MW-02

4/17/2023 12:00:00PM

Analyte	Result	Min Detection Limit	Reporting Limit	Units	Dilution	Batch	Prepared	Analyzed	Notes
---------	--------	---------------------	-----------------	-------	----------	-------	----------	----------	-------

## Waypoint Analytical, LLC.

Y304389-02 (Water)

### PAH by 8270D SIM

1-Methylnaphthalene	ND	0.0076	0.02	µg/L	1	L677354	04/20/2023	04/20/2023
2-Methylnaphthalene	ND	0.0185	0.02	"	"	"	"	"
Benzo(a)anthracene	ND	0.0113	0.02	"	"	"	"	"

Surrogate: 2-Fluorobiphenyl	113 %	70-130	"	"	"
Surrogate: 4-Terphenyl-d14	126 %	70-130	"	"	"

Origins Laboratory, Inc.



The results in this report apply to the samples analyzed in accordance with the chain of custody document. This analytical report must be reproduced in its entirety.



Eagle Environmental Consulting, LLC  
8000 W 44th Ave  
Wheat Ridge CO 80033

Martin C Eckert III  
Project Number: [none]  
Project: Noble - Cody #D #3-7

## MW-03

4/17/2023 12:15:00PM

Analyte	Result	Min Detection Limit	Reporting Limit	Units	Dilution	Batch	Prepared	Analyzed	Notes
---------	--------	---------------------	-----------------	-------	----------	-------	----------	----------	-------

## Waypoint Analytical, LLC.

Y304389-03 (Water)

### PAH by 8270D SIM

1-Methylnaphthalene	ND	0.0076	0.02	µg/L	1	L677354	04/20/2023	04/20/2023
2-Methylnaphthalene	ND	0.0185	0.02	"	"	"	"	"
Benzo(a)anthracene	ND	0.0113	0.02	"	"	"	"	"

Surrogate: 2-Fluorobiphenyl	106 %	70-130	"	"	"
Surrogate: 4-Terphenyl-d14	117 %	70-130	"	"	"

Origins Laboratory, Inc.



The results in this report apply to the samples analyzed in accordance with the chain of custody document. This analytical report must be reproduced in its entirety.

Eagle Environmental Consulting, LLC  
8000 W 44th Ave  
Wheat Ridge CO 80033

Martin C Eckert III  
Project Number: [none]  
Project: Noble - Cody #D #3-7

MW-04

4/17/2023 12:30:00PM

Analyte	Result	Min Detection Limit	Reporting Limit	Units	Dilution	Batch	Prepared	Analyzed	Notes
---------	--------	---------------------	-----------------	-------	----------	-------	----------	----------	-------

Waypoint Analytical, LLC.  
Y304389-04 (Water)

PAH by 8270D SIM

1-Methylnaphthalene	ND	0.0076	0.02	µg/L	1	L677354	04/20/2023	04/20/2023	
2-Methylnaphthalene	ND	0.0185	0.02	"	"	"	"	"	
Benzo(a)anthracene	ND	0.0113	0.02	"	"	"	"	"	

Surrogate: 2-Fluorobiphenyl	103 %		70-130			"	"	"	
Surrogate: 4-Terphenyl-d14	141 %		70-130			"	"	"	*

Origins Laboratory, Inc.



The results in this report apply to the samples analyzed in accordance with the chain of custody document. This analytical report must be reproduced in its entirety.

Eagle Environmental Consulting, LLC  
8000 W 44th Ave  
Wheat Ridge CO 80033

Martin C Eckert III  
Project Number: [none]  
Project: Noble - Cody #D #3-7

**MW-05****4/17/2023 12:45:00PM**

Analyte	Result	Min Detection Limit	Reporting Limit	Units	Dilution	Batch	Prepared	Analyzed	Notes
---------	--------	------------------------	--------------------	-------	----------	-------	----------	----------	-------

**Waypoint Analytical, LLC.**  
**Y304389-05 (Water)****PAH by 8270D SIM**

1-Methylnaphthalene	ND	0.0076	0.02	µg/L	1	L677354	04/20/2023	04/20/2023	
2-Methylnaphthalene	ND	0.0185	0.02	"	"	"	"	"	
Benzo(a)anthracene	ND	0.0113	0.02	"	"	"	"	"	

Surrogate: 2-Fluorobiphenyl	112 %		70-130			"	"	"	
Surrogate: 4-Terphenyl-d14	138 %		70-130			"	"	"	*

Origins Laboratory, Inc.



*The results in this report apply to the samples analyzed in accordance with the chain of custody document. This analytical report must be reproduced in its entirety.*

Eagle Environmental Consulting, LLC  
8000 W 44th Ave  
Wheat Ridge CO 80033

Martin C Eckert III  
Project Number: [none]  
Project: Noble - Cody #D #3-7

**PAH by 8270D SIM - Quality Control**  
**Waypoint Analytical, LLC.**

Analyte	Result	Reporting Limit	Units	Spike Level	Source Result	%REC	%REC Limits	RPD	RPD Limit	Notes
<b>Batch L677354 - 3511</b>										
<b>LCSD (LCSD-L677354)</b>					Prepared: 04/20/2023 Analyzed: 04/20/2023					
Benzo(a)anthracene	2.83	0.02	µg/L	3.03		93.3	60-140	2	20	
2-Methylnaphthalene	3.49	0.02	"	3.03		115	60-140	8.7	20	
1-Methylnaphthalene	3.47	0.02	"	3.03		115	60-140	9.6	20	
Surrogate: 4-Terphenyl-d14	127		"	3.03		127	70-130			
Surrogate: 2-Fluorobiphenyl	107		"	3.03		107	70-130			
<b>LCS (LCS-L677354)</b>					Prepared: 04/20/2023 Analyzed: 04/20/2023					
Benzo(a)anthracene	2.89	0.02	µg/L	3.03		95.3	60-140			
2-Methylnaphthalene	3.81	0.02	"	3.03		126	60-140			
1-Methylnaphthalene	3.82	0.02	"	3.03		126	60-140			
Surrogate: 4-Terphenyl-d14	126		"	3.03		126	70-130			
Surrogate: 2-Fluorobiphenyl	111		"	3.03		111	70-130			
<b>LRB (LRB-L677354)</b>					Prepared: 04/20/2023 Analyzed: 04/20/2023					
Benzo(a)anthracene	ND	0.02	µg/L				-			
2-Methylnaphthalene	ND	0.02	"				-			
1-Methylnaphthalene	ND	0.02	"				-			
Surrogate: 4-Terphenyl-d14	129		"	3.03		129	70-130			
Surrogate: 2-Fluorobiphenyl	112		"	3.03		112	70-130			

Origins Laboratory, Inc.



The results in this report apply to the samples analyzed in accordance with the chain of custody document. This analytical report must be reproduced in its entirety.

Eagle Environmental Consulting, LLC  
8000 W 44th Ave  
Wheat Ridge CO 80033

Martin C Eckert III  
Project Number: [none]  
Project: Noble - Cody #D #3-7

### Notes and Definitions

\* QC Failure

ND Analyte NOT DETECTED at or above the reporting limit

RPD Relative Percent Difference

All soil results are reported on a wet weight basis.

Calculated results may use J-flag data (instead of reported "ND") as part of calculation to provide a more accurate result.

Origins Laboratory, Inc.



*The results in this report apply to the samples analyzed in accordance with the chain of custody document. This analytical report must be reproduced in its entirety.*