

[illegible]

| | | | | | | | | | | | | | | |
|--|--------------|----------|----------|--|--|--|--|--|--|--|--|--|--|--|
| Third Party <i>Owner</i> | | | | | | | | | | | | | | |
| Removal Date | Still onsite | | | | | | | | | | | | | |
| Sample taken? <i>Location/ Sample</i> | | | | | | | | | | | | | | |
| PID Readings | 110.5 | 16.6 | 173.1 | | | | | | | | | | | |
| Photo Number(s) | TB-SS-03 | TB-SS-04 | TB-SS-05 | | | | | | | | | | | |
| Other Facility Equipment | | | | | | | | | | | | | | |
| Equipment type | | | | | | | | | | | | | | |
| Equipment <i>Condition</i> | | | | | | | | | | | | | | |
| Age | | | | | | | | | | | | | | |
| Soil impacts <i>Observed during</i> | | | | | | | | | | | | | | |
| PID Readings | | | | | | | | | | | | | | |
| Sample taken? <i>Location/ Sample</i> | | | | | | | | | | | | | | |
| Photo Number(s) | | | | | | | | | | | | | | |
| Other observations regarding other facility or third party equipment: | | | | | | | | | | | | | | |
| | | | | | | | | | | | | | | |
| Summary | | | | | | | | | | | | | | |
| Was impacted soil identified? | | | | | | | | | | | | | | |
| <div> <div>No</div> <div>Yes - less than 10 cubic yards</div> <div>Yes - more than 10 cubic yards</div> </div> | | | | | | | | | | | | | | |
| Total number of samples field screened: 6 | | | | | Total number of samples collected: 2 | | | | | | | | | |
| Highest PID Reading: 173.1 | | | | | Total number of samples submitted to lab for analysis: 2 | | | | | | | | | |
| If more than 10 cubic yards of impacted soil were observed: | | | | | | | | | | | | | | |
| Vertical extent: | | | | | Estimated spill volume: | | | | | | | | | |
| Lateral extent: | | | | | Volume of soil removed: | | | | | | | | | |
| Is additional investigation required? | | | | | | | | | | | | | | |
| Was groundwater encountered during the investigation? | | | | | | | | | | | | | | |
| <div> <div>No</div> <div>Yes - not impacted or in contact with impacted soils</div> <div>Yes - groundwater impacted and/or in contact with impacted soils</div> </div> | | | | | | | | | | | | | | |
| Measured depth to groundwater: | | | | | Was remedial groundwater removal conducted? Yes No | | | | | | | | | |
| Date Groundwater was encountered: | | | | | Commencement date of removal: | | | | | | | | | |
| Sheen on groundwater? Yes No | | | | | Volume of groundwater removed prior to sampling: | | | | | | | | | |
| Free product observed? Yes No | | | | | Volume of groundwater removed post sampling: | | | | | | | | | |
| Total number of samples collected: | | | | | Total Volume of groundwater removed: | | | | | | | | | |
| Total number of samples submitted to lab for analysis: | | | | | | | | | | | | | | |

Buried or Partially Buried Vessel Closure Checklist

COGCC Rule 911.a.(4) Environmental Site Closure Assessment Field Form

| | | | | | | | | |
|--|----------------|--------------|----------|------------------|--|------------------|--|----------------------------------|
| Additional attachments (optional): | | Pit Closure | | Wellhead Closure | | Flowline Closure | | Tank Battery Closure 4/5/21 |
| Site Name & COGCC Facility Number: 330872 - Dinner 6-34 | | Date: 4/5/21 | | | | | | Remediation Project #: 16768 |
| Associated Wells: 1 | | Age of Site: | | | | | | Number of Photos Attached: 1 |
| Location: (GPS coordinates of vault or southeastern tank berm for multiple) 40.339123 / -104.594843 | | | | | | | | Estimated Facility Size (acres): |
| General Condition of Site: (General observations regarding housekeeping, corrosion, waste management, etc.) | | | | | | | | |
| Site in good condition | | | | | | | | |
| USCS Soil Type: Silty Sandy CLAY | | | | | Estimated Depth to Groundwater: >20' | | | |
| Hydrocarbon Impacted Soils / Spills: (Note estimated size and if impact appears to be surficial or extends to an unknown depth) | | | | | | | | |
| None observed | | | | | | | | |
| Salt Crusted Soils or Impacted Vegetation: (Note estimated size and if impact appears to be surficial or extends to an unknown depth) | | | | | | | | |
| None observed | | | | | | | | |
| Buried or Partially Buried Vessels | | | | | | | | |
| Tank Contents | Produced water | | | | | | | |
| Size (barrels) | | | | | | | | |
| Age | | | | | | | | |
| Construction Material | Concrete | | | | | | | |
| Visual Integrity of Tank | | | | | | | | |
| Condition of tank | | | | | | | | |
| PID Readings | | | | | | | | |
| Condition of | | | | | | | | |
| PID Readings | 73.5 | 35.6 | 69.0 | 52.5 | 65.4 | | | |
| Sample taken? Location/Sample ID# | WV-SS-01 | WV-SS-02 | WV-SS-03 | WV-SS-04 | WV-FS-01 | | | |
| Photo Number(s) | | | | | | | | |
| Other observations regarding partially buried vessels: | | | | | | | | |
| Summary | | | | | | | | |
| Was impacted soil identified? | | | | | | | | |
| <div style="display: flex; justify-content: space-around;"> <input checked="" type="radio"/> No Yes - less than 10 cubic yards Yes - more than 10 cubic yards </div> | | | | | | | | |
| Total number of samples field screened: 5 | | | | | Total number of samples collected: 2 | | | |
| Highest PID Reading: 73.5 | | | | | Total number of samples submitted to lab for analysis: 2 | | | |
| If more than 10 cubic yards of impacted soil were observed: | | | | | | | | |
| Vertical extent: | | | | | Estimated spill volume: | | | |
| Lateral extent: | | | | | Volume of soil removed: | | | |
| Is additional investigation required? | | | | | | | | |
| Was groundwater encountered during the investigation? | | | | | | | | |
| <div style="display: flex; justify-content: space-around;"> No Yes - not impacted or in contact with impacted soils Yes - groundwater impacted and/or in contact with impacted soils </div> | | | | | | | | |
| Measured depth to groundwater: | | | | | Was remedial groundwater removal conducted? Yes No | | | |
| Date Groundwater was encountered: | | | | | Commencement date of removal: | | | |
| Sheen on groundwater? Yes No | | | | | Volume of groundwater removed prior to sampling: | | | |
| Free product observed? Yes No | | | | | Volume of groundwater removed post sampling: | | | |
| Total number of samples collected: | | | | | Total Volume of groundwater removed: | | | |
| Total number of samples submitted to lab for analysis: | | | | | | | | |



FIGURES

Figure 1: Topographic Site Location Map

Figure 2: Aerial Site Location Map

Figure 3: Soil Analytical Map

Figure 4: Polycyclic Aromatic Hydrocarbons Map

Figure 5: Confirmation Soil Analytical Map



Topographic Site Location Map

Dinner #6-34
Decommissioning Assessment
40.339093 / -104.593310
SE¼ SW¼ SEC.6 T4N R64W 6PM
Weld County, Colorado
Location ID 330872
Remediation # 16768



EAGLE
ENVIRONMENTAL
CONSULTING, INC.

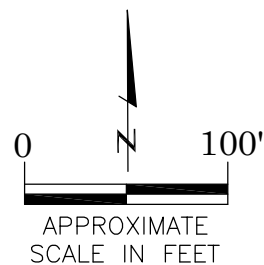
Source: USGS 7.5 Minute Topographic
Map, Valley View School, CO
Quadrangle 2019

Figure 1



LEGEND

- APPROXIMATE TANK BATTERY (DECOMMISSIONED)
- ASSOCIATED BURIED VAULT (REMOVED)
- ASSOCIATED SEPARATOR CONTAINMENT AREA (DECOMMISSIONED)



AERIAL SITE LOCATION MAP

DINNER #6-34
 CLOSURE ASSESSMENT
 40.339093 / -104.593310
 SE1/4 SW1/4 SEC.6 T4N R64W 6PM
 WELD COUNTY, COLORADO
 LOCATION ID 330872
 REMEDIATION # 16768

DATE:
05/21/21

FIG. NO. DRAWN BY:
2 MM



EAGLE
ENVIRONMENTAL
CONSULTING, INC.
 8000 W 44th Ave, Wheat Ridge, CO 80033
 Ph: 303-433-0479 • F: 303-325-5449

LEGEND

- APPROXIMATE ASSESSMENT BOUNDARIES
- APPROXIMATE DUMPLINE PATH TO WATER VAULT
- APPROXIMATE LOCATION OF SOIL SAMPLES FIELD SCREENED, ONLY, WITH PHOTOIONIZATION DETECTOR (PID)
- APPROXIMATE LOCATION OF SOIL SAMPLES SUBMITTED FOR LABORATORY ANALYSIS

PARAMETERS

| SAMPLE LOCATION |
|--|
| DATE |
| DEPTH (FEET) |
| B = BENZENE (mg/kg) |
| T = TOLUENE (mg/kg) |
| E = ETHYLBENZENE (mg/kg) |
| X = TOTAL XYLENES (mg/kg) |
| G = TPH-GRO (mg/kg) |
| D = TPH-DRO (mg/kg) |
| R = TPH-RRO (mg/kg) |
| 1,2,4-TMB = 1,2,4 TRIMETHYLBENZENE (mg/kg) |
| 1,3,5-TMB = 1,3,5 TRIMETHYLBENZENE (mg/kg) |
| Brn= BORON (mg/L) |
| EC = SPECIFIC CONDUCTANCE (mmhos/cm) |
| SAR= SODIUM ADSORPTION RATIO |
| pH = pH (pH UNITS) |

mg/kg = MILLIGRAMS PER KILOGRAM
mg/L = MILLIGRAMS PER LITER
NA - NOT ANALYZED

TPH-GRO = TOTAL PETROLEUM HYDROCARBONS - GASOLINE RANGE ORGANICS
TPH-DRO = TOTAL PETROLEUM HYDROCARBONS - DIESEL RANGE ORGANICS
TPH-RRO = TOTAL PETROLEUM HYDROCARBONS - RESIDUAL RANGE ORGANICS

NOTE: VALUES PRESENTED WITH A LESS THAN SYMBOL (<) DID NOT CONTAIN CONCENTRATIONS AT OR ABOVE LABORATORY DETECTION LIMITS

VALUES PRESENTED IN **BOLD** VALUES CONTAIN CONCENTRATIONS EXCEEDING ECMC TABLE 915-1 REGULATORY LIMITS

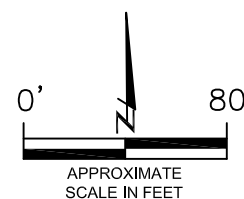
ECMC = ENERGY & CARBON MANAGEMENT COMMISSION

SOIL ANALYTICAL MAP
DINNER #6-34
CLOSURE ASSESSMENT
40.339093 / -104.593310
SE ¼ SW ¼ SEC.6 T4N R64W 6PM
WELD COUNTY, COLORADO
LOCATION ID 330872
REMEDATION # 16768

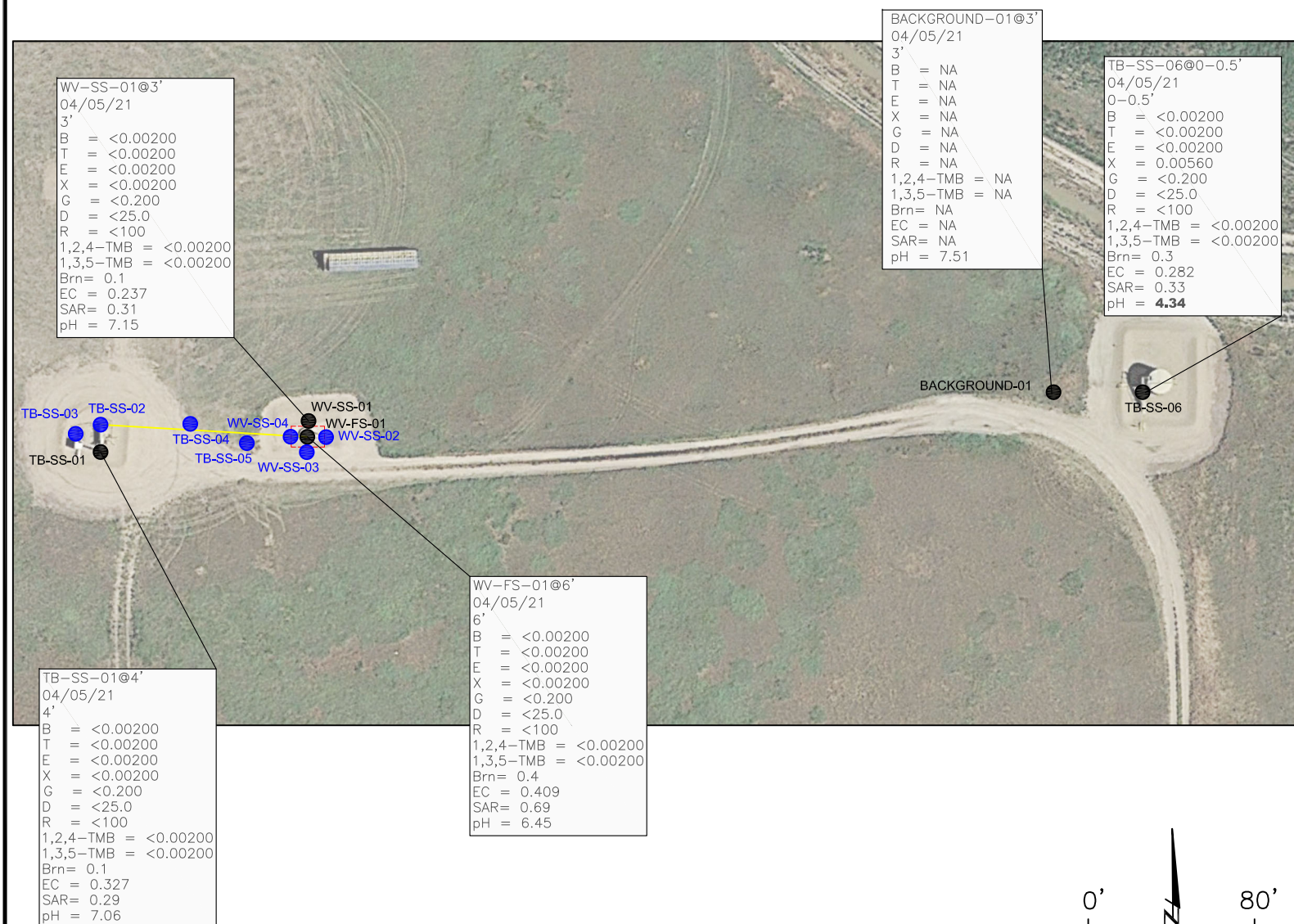
DATE:
06/11/21
DRAWN BY:
RA
FIG.
NO. 3



EAGLE
ENVIRONMENTAL
CONSULTING, INC.
8000 W 44th Ave, Wheat Ridge, CO 80033
Ph: 303-433-0479 • F: 303-325-5449



APPROXIMATE
SCALE IN FEET



WV-SS-01
04/05/21
3'

1-Methylnaphthalene = <0.00067
2-Methylnaphthalene = <0.00067
Acenaphthene = <0.00067
Anthracene = <0.00067
Benzo(a)anthracene = <0.00067
Benzo(a)pyrene = <0.00067
Benzo(b)fluoranthene = <0.00067
Benzo(k)fluoranthene = <0.00067
Chrysene = <0.00067
Dibenzo(a,h)anthracene = <0.00067
Fluoranthene = <0.00067
Fluorene = <0.00067
Indeno(1,2,3-CD)pyrene = <0.00067
Naphthalene = <0.00067
Pyrene = <0.00067

TB-SS-06
04/05/21
0-0.5'

1-Methylnaphthalene = <0.00067
2-Methylnaphthalene = <0.00067
Acenaphthene = <0.00067
Anthracene = <0.00067
Benzo(a)anthracene = <0.00067
Benzo(a)pyrene = 0.000601
Benzo(b)fluoranthene = 0.000745
Benzo(k)fluoranthene = <0.00067
Chrysene = 0.000613
Dibenzo(a,h)anthracene = <0.00067
Fluoranthene = 0.00083
Fluorene = <0.00067
Indeno(1,2,3-CD)pyrene = 0.00047
Naphthalene = <0.00067
Pyrene = 0.000917

TB-SS-01
04/05/21
4'

1-Methylnaphthalene = <0.00067
2-Methylnaphthalene = <0.00067
Acenaphthene = <0.00067
Anthracene = <0.00067
Benzo(a)anthracene = <0.00067
Benzo(a)pyrene = 0.000217
Benzo(b)fluoranthene = <0.00067
Benzo(k)fluoranthene = <0.00067
Chrysene = <0.00067
Dibenzo(a,h)anthracene = <0.00067
Fluoranthene = <0.00067
Fluorene = <0.00067
Indeno(1,2,3-CD)pyrene = <0.00067
Naphthalene = <0.00067
Pyrene = <0.00067

WV-FS-01
04/05/21
6'

1-Methylnaphthalene = 0.00286
2-Methylnaphthalene = 0.00427
Acenaphthene = <0.00067
Anthracene = 0.000505
Benzo(a)anthracene = <0.00067
Benzo(a)pyrene = 0.000318
Benzo(b)fluoranthene = <0.00067
Benzo(k)fluoranthene = <0.00067
Chrysene = 0.00304
Dibenzo(a,h)anthracene = <0.00067
Fluoranthene = <0.00067
Fluorene = 0.000874
Indeno(1,2,3-CD)pyrene = <0.00067
Naphthalene = <0.00067
Pyrene = 0.00144

LEGEND

- APPROXIMATE ASSESSMENT BOUNDARIES
- APPROXIMATE DUMPLINE PATH TO WATER VAULT
- SS-02 APPROXIMATE LOCATION OF SOIL SAMPLES FIELD SCREENED, ONLY, WITH PHOTOIONIZATION DETECTOR (PID)
- SS-02 APPROXIMATE LOCATION OF SOIL SAMPLES SUBMITTED FOR LABORATORY ANALYSIS

PARAMETERS

SAMPLE LOCATION
DATE SAMPLE COLLECTED
APPROXIMATE DEPTH

POLYCYCLIC AROMATIC HYDROCARBONS (PAHs)

NOTE:
CONCENTRATIONS PRESENTED IN mg/kg

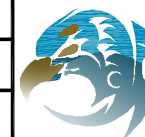
mg/kg = MILLIGRAMS PER KILOGRAM

MDL = MINIMUM DETECTION LIMIT

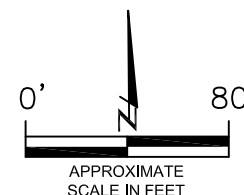
NOTE:
VALUES PRESENTED WITH A LESS THAN SYMBOL (<) DID NOT CONTAIN CONCENTRATIONS AT OR ABOVE LABORATORY MDL AND/OR REPORTING LIMITS

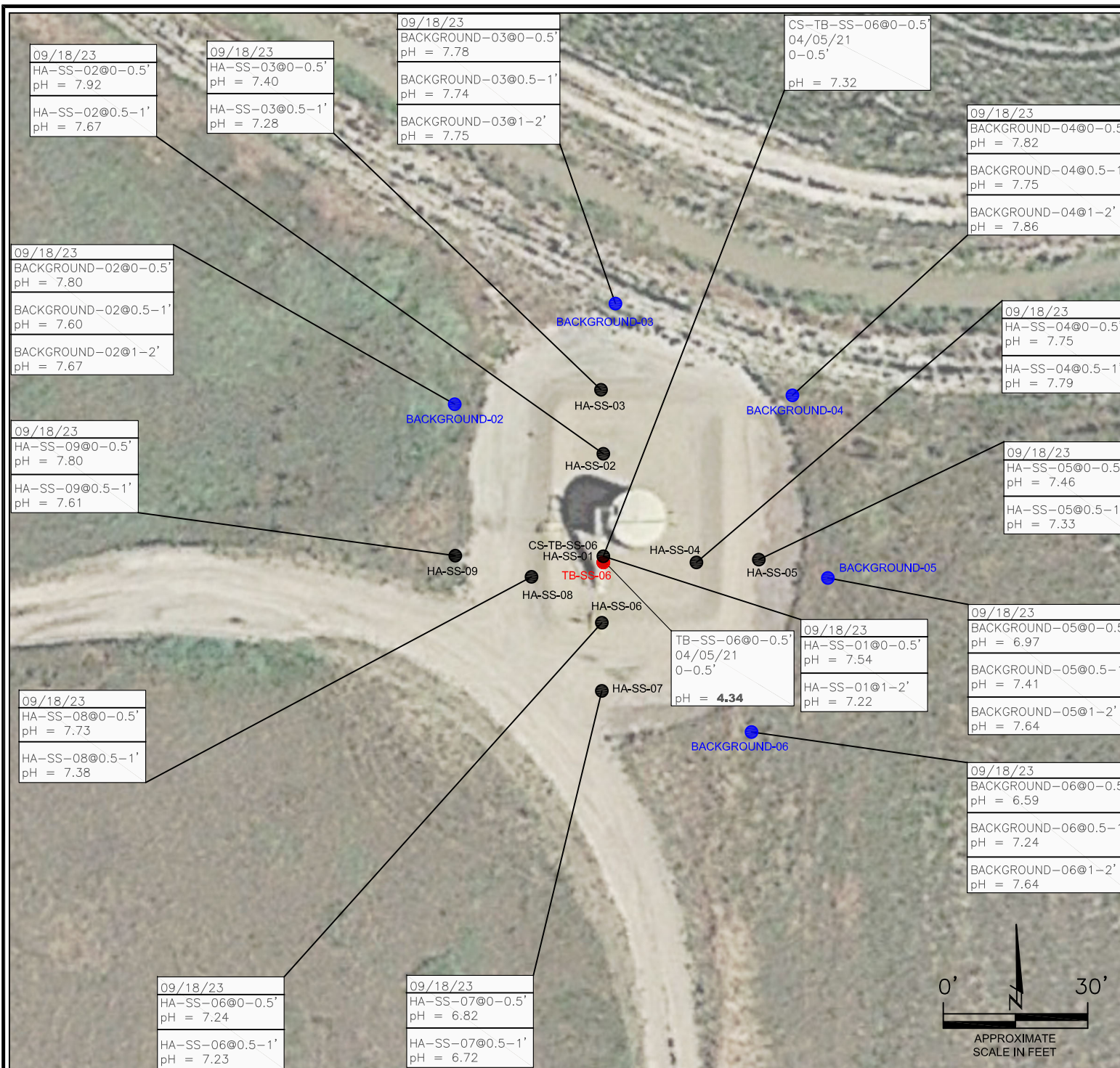
POLYCYCLIC AROMATIC HYDROCARBONS MAP
DINNER #6-34
CLOSURE ASSESSMENT
40.339093 / -104.593310
SE ¼ SW ¼ SEC.6 T4N R64W 6PM
WELD COUNTY, COLORADO
LOCATION ID 330872
REMEDATION # 16768

DATE:
06/11/21
DRAWN BY:
RA
FIG.
NO. 4



EAGLE
ENVIRONMENTAL
CONSULTING, INC.
8000 W 44th Ave, Wheat Ridge, CO 80033
Ph: 303-433-0479 • F: 303-325-5449





LEGEND

- **SS-02** CONFIRMATION SAMPLE LOCATION WITHIN ECMC TABLE 915-1 REGULATORY RANGE
- **SS-02** BACKGROUND CONFIRMATION SAMPLE LOCATION WITHIN ECMC TABLE 915-1 REGULATORY RANGE
- **SS-02** PREVIOUS SOIL SAMPLE LOCATION OUTSIDE ECMC TABLE 915-1 REGULATORY RANGE

PARAMETERS


| SAMPLE LOCATION | DATE | DEPTH (FEET) |
|--------------------|------|--------------|
| pH = pH (pH UNITS) | | |

VALUES PRESENTED IN **BOLD** ARE OUTSIDE OF ECMC REGULATORY RANGE.

ECMC = ENERGY & CARBON MANAGEMENT COMMISSION

CONFIRMATION SOIL ANALYTICAL MAP

DINNER #6-34
CLOSURE ASSESSMENT
40.339093 / -104.593310
SE¼ SW¼ SEC.6 T4N R64W 6PM
WELD COUNTY, COLORADO
LOCATION ID 330872
REMEDATION # 16768

| | |
|-----------------|--|
| FIGURE NO. 5 |  EAGLE ENVIRONMENTAL CONSULTING, LLC 8000 W 44th Ave, Wheat Ridge, CO 80033 Ph: 303-433-0479 • F: 303-325-5449 |
| DRAWN BY: RA | |



TABLES

Table 1: Field Data Summary Table

Table 2: Summary of Volatile Organic Soil Chemistry Data

Table 3: Summary of Polycyclic Aromatic Hydrocarbon Soil Chemistry Data

Table 4: Summary of Soil Suitability for Reclamation

TABLE 1
FIELD DATA SUMMARY TABLE
NOBLE ENERGY 100322
DINNER #6-34, WELD COUNTY, COLORADO
REM # 16768

| Sample ID | Sample Date | Depth | GPS Data | | VOC Concentration (ppm) |
|----------------------|-------------|--------|--------------------|-------------|-------------------------|
| | | | Latitude/Longitude | | |
| TB-SS-01@4' | 4/5/2021 | 4 | 40.339097 | -104.595197 | 21.5 |
| TB-SS-02@4' | 4/5/2021 | 4 | 40.339128 | -104.595198 | 35.6 |
| TB-SS-03@0-0.25' | 4/5/2021 | 0-0.25 | 40.339124 | -104.595234 | 110.5 |
| TB-SS-04@0-0.25' | 4/5/2021 | 0-0.25 | 40.339136 | -104.595044 | 16.6 |
| TB-SS-05@2.5 | 4/5/2021 | 2.5 | 40.339113 | -104.594949 | 173.1 |
| TB-SS-06@0-0.5 | 4/5/2021 | 0-0.5 | 40.339175 | -104.593369 | 11.1 |
| WV-SS-01@3' | 4/5/2021 | 3 | 40.339139 | -104.594845 | 73.5 |
| WV-SS-02@3' | 4/5/2021 | 3 | 40.339122 | -104.594821 | 35.6 |
| WV-SS-03@3' | 4/5/2021 | 3 | 40.339109 | -104.594844 | 69.0 |
| WV-SS-04@3' | 4/5/2021 | 3 | 40.339123 | -104.594871 | 52.5 |
| WV-FS-01@6' | 4/5/2021 | 6 | 40.339122 | -104.594845 | 65.4 |
| CS-TB-SS-06@0-0.5 | 9/18/2023 | 0-0.5 | 40.339175 | -104.593369 | 50.7 |
| HA-SS-01@0.5-1' | 9/18/2023 | 0.5-1 | 40.339175 | -104.593369 | 6.1 |
| HA-SS-01@1-2' | 9/18/2023 | 1-2 | 40.339175 | -104.593369 | 3.5 |
| HA-SS-02@0-0.5' | 9/18/2023 | 0-0.5 | 40.339221 | -104.593372 | 9.7 |
| HA-SS-02@0.5-1' | 9/18/2023 | 0.5-1 | 40.339221 | -104.593372 | 6.0 |
| HA-SS-03@0-0.5 | 9/18/2023 | 0-0.5 | 40.339262 | -104.593368 | 3.0 |
| HA-SS-03@0.5-1 | 9/18/2023 | 0.5-1 | 40.339262 | -104.593368 | 9.3 |
| HA-SS-04@0-0.5 | 9/18/2023 | 0-0.5 | 40.339177 | -104.593315 | 23.9 |
| HA-SS-04@0.5-1 | 9/18/2023 | 0.5-1 | 40.339177 | -104.593315 | 3.7 |
| HA-SS-05@0-0.5 | 9/18/2023 | 0-0.5 | 40.339177 | -104.593257 | 5.1 |
| HA-SS-05@0.5-1 | 9/18/2023 | 0.5-1 | 40.339177 | -104.593257 | 3.3 |
| HA-SS-06@0-0.5 | 9/18/2023 | 0-0.5 | 40.339138 | -104.593374 | 1.1 |
| HA-SS-06@0.5-1 | 9/18/2023 | 0.5-1 | 40.339138 | -104.593374 | 4.4 |
| HA-SS-07@0-0.5 | 9/18/2023 | 0-0.5 | 40.339094 | -104.593374 | 6.7 |
| HA-SS-07@0.5-1 | 9/18/2023 | 0.5-1 | 40.339094 | -104.593374 | 1.4 |
| HA-SS-08@0-0.5 | 9/18/2023 | 0-0.5 | 40.339169 | -104.593427 | 3.0 |
| HA-SS-08@0.5-1 | 9/18/2023 | 0.5-1 | 40.339169 | -104.593427 | 3.2 |
| HA-SS-09@0-0.5 | 9/18/2023 | 0-0.5 | 40.339174 | -104.593479 | 3.1 |
| HA-SS-09@0.5-1 | 9/18/2023 | 0.5-1 | 40.339174 | -104.593479 | 1.7 |
| Background-01@3' | 4/5/2021 | 3 | 40.339185 | -104.593552 | 17.8 |
| Background-02@0-0.5' | 9/18/2023 | 0-0.5 | 40.339269 | -104.593479 | 46.1 |
| Background-02@0.5-1' | 9/18/2023 | 0.5-1 | 40.339269 | -104.593479 | 42.2 |
| Background-02@1-2' | 9/18/2023 | 1-2 | 40.339269 | -104.593479 | 35.2 |
| Background-03@0-0.5' | 9/18/2023 | 0-0.5 | 40.339321 | -104.593356 | 29.4 |
| Background-03@0.5-1' | 9/18/2023 | 0.5-1 | 40.339321 | -104.593356 | 38.2 |
| Background-03@1-2' | 9/18/2023 | 1-2 | 40.339321 | -104.593356 | 40.6 |
| Background-04@0-0.5' | 9/18/2023 | 0-0.5 | 40.339259 | -104.593217 | 42.8 |
| Background-04@0.5-1' | 9/18/2023 | 0.5-1 | 40.339259 | -104.593217 | 36.7 |
| Background-04@1-2' | 9/18/2023 | 1-2 | 40.339259 | -104.593217 | 40.4 |
| Background-05@0-0.5' | 9/18/2023 | 0-0.5 | 40.339163 | -104.593213 | 32.4 |
| Background-05@0.5-1' | 9/18/2023 | 0.5-1 | 40.339163 | -104.593213 | 2.8 |
| Background-05@1-2' | 9/18/2023 | 1-2 | 40.339163 | -104.593213 | 3.2 |
| Background-06@0-0.5' | 9/18/2023 | 0-0.5 | 40.339077 | -104.593275 | 30.8 |
| Background-06@0.5-1' | 9/18/2023 | 0.5-1 | 40.339077 | -104.593275 | 1.9 |
| Background-06@1-2' | 9/18/2023 | 1-2 | 40.339077 | -104.593275 | 2.4 |

1. Global Positioning System (GPS) data is provided in decimal degrees using North American Datum (NAD) 83 UTMZone 13 North.

2. Volatile organic compound (VOC) concentrations are measured in the field using a photoionization detector (PID).

PDOP = Position Dilution of Precision

ppm = Parts per million

in. = Inches

ft. = Feet

bgs = Below ground surface

TABLE 2
SUMMARY OF VOLATILE ORGANIC SOIL CHEMISTRY DATA
NOBLE ENERGY 100322
DINNER #6-34, WELD COUNTY, COLORADO
REM # 16768

| Sample ID | Sample Date | Depth (ft) | Benzene (mg/kg) | Toluene (mg/kg) | Ethyl-Benzene (mg/kg) | Xylenes (mg/kg) | 1,2,4-Trimethyl- Benzene (mg/kg) | 1,3,5-Trimethyl- Benzene (mg/kg) | Naphthalene (mg/kg) | TPH (mg/kg) | TPH GRO (mg/kg) | TPH DRO (mg/kg) | TPH ORO (mg/kg) |
|---|-------------|------------|--------------------|--------------------|--------------------------|-----------------|--|--|------------------------|----------------|--------------------|--------------------|--------------------|
| ECMC Table 915-1 Limits (Residential SSL) | | | 1.2 | 490 | 5.8 | 58 | 30 | 27 | 2 | 500 | 500** | | |
| ECMC Table 915-1 Limits (Protection of Groundwater SSL) | | | 0.0026 | 0.69 | 0.78 | 9.9 | 0.0081 | 0.0087 | 0.0038 | 500 | 500** | | |
| TB-SS-01@4' | 4/5/2021 | 4 | <0.00200 | <0.00200 | <0.00200 | <0.00200 | <0.00200 | <0.00200 | <0.00067 | <500 | <0.200 | <25.0 | <100 |
| TB-SS-06@0-0.5 | 4/5/2021 | 0-0.5 | <0.00200 | <0.00200 | <0.00200 | 0.00560 | <0.00200 | <0.00200 | <0.00067 | <500 | <0.200 | <25.0 | <100 |
| WV-SS-01@3' | 4/5/2021 | 3 | <0.00200 | <0.00200 | <0.00200 | <0.00200 | <0.00200 | <0.00200 | <0.00067 | <500 | <0.200 | <25.0 | <100 |
| WV-FS-01@6' | 4/5/2021 | 6 | <0.00200 | <0.00200 | <0.00200 | <0.00200 | <0.00200 | <0.00200 | <0.00067 | <500 | <0.200 | <25.0 | <100 |

1. Bold values exceed the ECMC Table 915-1 limit(s)

2. Red & blue highlighted soil analytical values indicate an exceedance of the referenced soil screening level (SSL)

3. * Indicates laboratory minimum detection limit in excess of SSL

4. ** Summation of GRO+DRO+ORO must be less than 500 mg/kg

NA - Not analyzed

TABLE 3
SUMMARY OF POLYCYCLIC AROMATIC HYDROCARBON SOIL CHEMISTRY DATA
NOBLE ENERGY 100322
DINNER #6-34, WELD COUNTY, COLORADO
REM # 16768

| Sample ID | Sample Date | Depth (ft) | Acenaphthene (mg/kg) | Anthracene (mg/kg) | Benzo (a) Anthracene (mg/kg) | Benzo (a) Pyrene (mg/kg) | Benzo (b) Fluoranthene (mg/kg) | Benzo (k) Fluoranthene (mg/kg) | Chrysene (mg/kg) | Dibenz (a,h) Anthracene (mg/kg) | Fluoranthene (mg/kg) | Fluorene (mg/kg) | Indeno (1,2,3-cd) Pyrene (mg/kg) | Pyrene (mg/kg) | 1-Methyl - Naphthalene (mg/kg) | 2-Methyl- Naphthalene (mg/kg) |
|---|-------------|------------|-------------------------|-----------------------|------------------------------------|-----------------------------|--------------------------------------|--------------------------------------|---------------------|---------------------------------------|-------------------------|------------------|-------------------------------------|----------------|--------------------------------------|-------------------------------------|
| ECMC Table 915-1 Limits (Residential SSL) | | | 360 | 1500 | 1.1 | 0.11 | 1.1 | 11 | 110 | 0.11 | 240 | 240 | 1.1 | 180 | 18 | 24 |
| ECMC Table 915-1 Limits (Protection of Groundwater SSL) | | | 0.55 | 5.8 | 0.011 | 0.24 | 0.3 | 2.9 | 9 | 0.096 | 8.9 | 0.54 | 0.98 | 1.3 | 0.006 | 0.019 |
| TB-SS-01-B#4 | 4/5/2021 | 4 | <0.00067 | <0.00067 | <0.00067 | 0.000217 | <0.00067 | <0.00067 | <0.00067 | <0.00067 | <0.00067 | <0.00067 | <0.00067 | <0.00067 | <0.00067 | <0.00067 |
| TB-SS-06@0-0.5 | 4/5/2021 | 0-0.5 | <0.00067 | <0.00067 | <0.00067 | 0.000601 | 0.000745 | <0.00067 | 0.000613 | <0.00067 | 0.00083 | <0.00067 | 0.00047 | 0.000917 | <0.00067 | <0.00067 |
| WV-SS-01@3 | 4/5/2021 | 3 | <0.00067 | <0.00067 | <0.00067 | <0.00067 | <0.00067 | <0.00067 | <0.00067 | <0.00067 | <0.00067 | <0.00067 | <0.00067 | <0.00067 | <0.00067 | <0.00067 |
| WV-SS-01@6 | 4/5/2021 | 6 | <0.00067 | 0.000505 | <0.00067 | 0.000318 | <0.00067 | <0.00067 | 0.00304 | <0.00067 | <0.00067 | 0.000874 | <0.00067 | 0.00144 | 0.00286 | 0.00427 |

1. Bold values exceed the ECMC Table 915-1 limit(s)
2. Red & blue highlighted soil analytical values indicate an exceedance of the referenced soil screening level (SSL)
3. * Indicates laboratory minimum detection limit in excess of SSL
NA - Not analyzed

TABLE 4
SUMMARY OF SOIL SUITABILITY FOR RECLAMATION
NOBLE ENERGY 100322
DINNER #6-34, WELD COUNTY, COLORADO
REM # 16768

| Sample ID | Sample Date | Depth (ft) | pH (Standard Units) | EC (mmhos/cm) | SAR (Standard Units) | Boron (mg/L) |
|--|-------------|------------|------------------------|---------------|-------------------------|-----------------|
| ECMC Table 915-1 Soil Suitability Limits | | | 6 - 8.3 | 4 | 6 | 2 |
| TB-SS-01@4' | 4/5/2021 | 4 | 7.06 | 0.327 | 0.29 | 0.1 |
| TB-SS-06@0-0.5 | 4/5/2021 | 0-0.5 | 4.34 | 0.282 | 0.33 | 0.3 |
| WV-SS-01@3' | 4/5/2021 | 3 | 7.15 | 0.237 | 0.31 | 0.1 |
| WV-FS-01@6' | 4/5/2021 | 6 | 6.45 | 0.409 | 0.69 | 0.4 |
| CS-TB-SS-06@0-0.5 | 9/18/2023 | 0-0.5 | 7.32 | NA | NA | NA |
| HA-SS-01@0.5-1' | 9/18/2023 | 0.5-1 | 7.54 | NA | NA | NA |
| HA-SS-01@1-2' | 9/18/2023 | 1-2 | 7.22 | NA | NA | NA |
| HA-SS-02@0-0.5' | 9/18/2023 | 0-0.5 | 7.92 | NA | NA | NA |
| HA-SS-02@0.5-1' | 9/18/2023 | 0.5-1 | 7.67 | NA | NA | NA |
| HA-SS-03@0-0.5 | 9/18/2023 | 0-0.5 | 7.40 | NA | NA | NA |
| HA-SS-03@0.5-1 | 9/18/2023 | 0.5-1 | 7.28 | NA | NA | NA |
| HA-SS-04@0-0.5 | 9/18/2023 | 0-0.5 | 7.75 | NA | NA | NA |
| HA-SS-04@0.5-1 | 9/18/2023 | 0.5-1 | 7.79 | NA | NA | NA |
| HA-SS-05@0-0.5 | 9/18/2023 | 0-0.5 | 7.46 | NA | NA | NA |
| HA-SS-05@0.5-1 | 9/18/2023 | 0.5-1 | 7.33 | NA | NA | NA |
| HA-SS-06@0-0.5 | 9/18/2023 | 0-0.5 | 7.24 | NA | NA | NA |
| HA-SS-06@0.5-1 | 9/18/2023 | 0.5-1 | 7.23 | NA | NA | NA |
| HA-SS-07@0-0.5 | 9/18/2023 | 0-0.5 | 6.82 | NA | NA | NA |
| HA-SS-07@0.5-1 | 9/18/2023 | 0.5-1 | 6.72 | NA | NA | NA |
| HA-SS-08@0-0.5 | 9/18/2023 | 0-0.5 | 7.73 | NA | NA | NA |
| HA-SS-08@0.5-1 | 9/18/2023 | 0.5-1 | 7.38 | NA | NA | NA |
| HA-SS-09@0-0.5 | 9/18/2023 | 0-0.5 | 7.80 | NA | NA | NA |
| HA-SS-09@0.5-1 | 9/18/2023 | 0.5-1 | 7.61 | NA | NA | NA |
| Background-01@3' | 4/5/2021 | 3 | 7.51 | NA | NA | NA |
| Background-02@0-0.5' | 9/18/2023 | 0-0.5 | 7.80 | NA | NA | NA |
| Background-02@0.5-1' | 9/18/2023 | 0.5-1 | 7.60 | NA | NA | NA |
| Background-02@1-2' | 9/18/2023 | 1-2 | 7.67 | NA | NA | NA |
| Background-03@0-0.5' | 9/18/2023 | 0-0.5 | 7.78 | NA | NA | NA |
| Background-03@0.5-1' | 9/18/2023 | 0.5-1 | 7.74 | NA | NA | NA |
| Background-03@1-2' | 9/18/2023 | 1-2 | 7.75 | NA | NA | NA |
| Background-04@0-0.5' | 9/18/2023 | 0-0.5 | 7.82 | NA | NA | NA |
| Background-04@0.5-1' | 9/18/2023 | 0.5-1 | 7.75 | NA | NA | NA |
| Background-04@1-2' | 9/18/2023 | 1-2 | 7.86 | NA | NA | NA |
| Background-05@0-0.5' | 9/18/2023 | 0-0.5 | 6.97 | NA | NA | NA |
| Background-05@0.5-1' | 9/18/2023 | 0.5-1 | 7.41 | NA | NA | NA |
| Background-05@1-2' | 9/18/2023 | 1-2 | 7.64 | NA | NA | NA |
| Background-06@0-0.5' | 9/18/2023 | 0-0.5 | 6.59 | NA | NA | NA |
| Background-06@0.5-1' | 9/18/2023 | 0.5-1 | 7.24 | NA | NA | NA |
| Background-06@1-2' | 9/18/2023 | 1-2 | 7.64 | NA | NA | NA |
| Maximum Background Concentration | | | 7.86 | -- | -- | -- |
| Average Background Concentration | | | 7.55 | -- | -- | -- |

1. Bold faced values exceed the ECMC Table 915-1 limit(s)
 2. Blue highlighted soil analytical values indicate a regulatory exceedance
- NA - Not analyzed



ATTACHMENT A

Photo Log

DINNER #6-34

Location ID 330872

Remediation # 16768

Tank Battery Closure Assessment

April 2021 – September 2023



EAGLE
ENVIRONMENTAL
CONSULTING, INC.

8000 W 44th Ave, Wheat Ridge, CO 80033
Ph: 303-433-0479 • F: 303-325-5449



Tank Battery Decommissioning– 04/05/21



Looking south at flowline from wellhead

No petroleum hydrocarbon staining or significant odor observed
Separator removed off site prior to EAGLE's arrival



Looking south at separator dumpline

No petroleum hydrocarbon staining or odor observed

Tank Battery Decommissioning– 04/05/21



Looking east at meter house screening sample

No petroleum hydrocarbon staining or odor observed



Looking east on former facility pad

No petroleum hydrocarbon staining or odor observed

Tank Battery Decommissioning– 04/05/21



Looking west at flowline cut point between water vault and separator

No petroleum hydrocarbon staining or odor observed

Tank Battery Decommissioning– 4/5/21

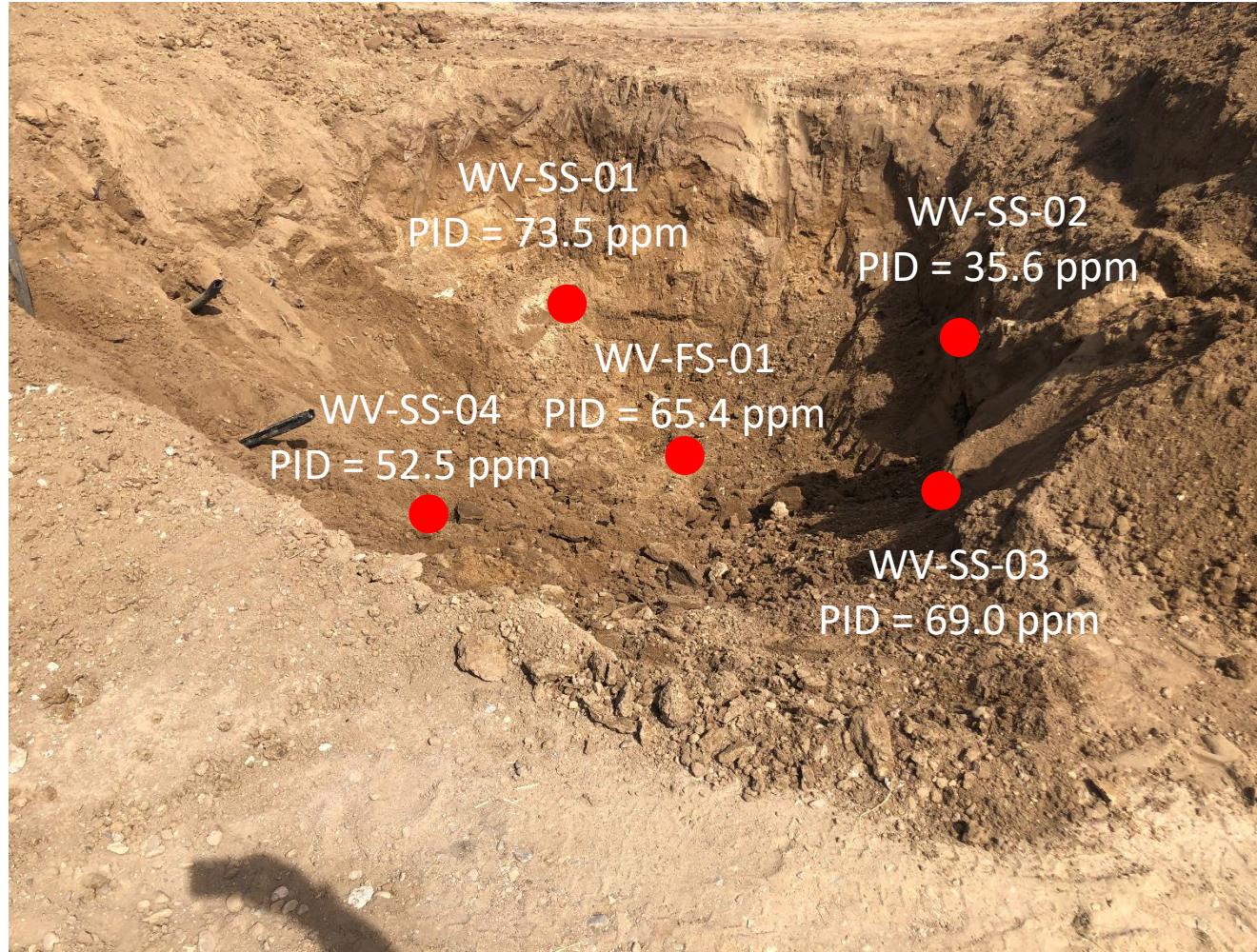


Looking northwest

Sample taken from location of condensate tank dump line location; tank was moved to facilitate sampling.

No petroleum hydrocarbon staining or odor observed

Water Vault Excavation



Looking northeast

No petroleum hydrocarbon staining or odor observed

EAGLE arrived onsite after water vault was removed.

Hand Auger Assessment – 09/18/23



Looking north at former condensate tank footprint

No petroleum hydrocarbon staining or odor observed



Looking north on former facility pad

No petroleum hydrocarbon staining or odor observed

Hand Auger Assessment – 09/18/23



Looking north on former facility pad

No petroleum hydrocarbon staining or odor observed



Looking east on former facility pad

No petroleum hydrocarbon staining or odor observed

Hand Auger Assessment – 09/18/23



Looking east on former facility pad

No petroleum hydrocarbon staining or odor observed



Looking south on former facility pad

No petroleum hydrocarbon staining or odor observed

Hand Auger Assessment – 09/18/23



Looking south on former facility pad

No petroleum hydrocarbon staining or odor observed



Looking west on former facility pad

No petroleum hydrocarbon staining or odor observed

Hand Auger Assessment – 09/18/23



Looking west on former facility pad

No petroleum hydrocarbon staining or odor observed



ATTACHMENT B

Laboratory Analytical Reports



April 15, 2021

Eagle Environmental Consulting, Inc.

Martin C Eckert III

8000 W 44th Ave

Wheat Ridge CO 80033

Project Name - Noble - Dinner #6-34

Project Number - 425777561

Attached are your analytical results for Noble - Dinner #6-34 received by Origins Laboratory, Inc. April 08, 2021. This project is associated with Origins project number Y104141-01.

The analytical results in the following report were analyzed under the guidelines of EPA Methods. These methods are identified as follows; "SW" are defined in SW-846, "EPA" are defined in 40CFR part 136 and "SM" are defined in the most current revision of Standard Methods For the Examination of Water and Wastewater.

The analytical results apply specifically to the samples and analyses specified per the attached Chain of Custody. As such, this report shall not be reproduced except in full, without the written approval of Origin's laboratory.

Unless otherwise noted, the analytical results for all soil samples are reported on a wet weight basis. All analytical analyses were performed under NELAP guidelines unless noted by a data qualifier.

Any holding time exceedances, deviations from the method specifications or deviations from Origins Laboratory's Standard Operating Procedures are outlined in the case narrative.

Thank you for selecting Origins for your analytical needs. Please contact us with any questions concerning this report, or if we can help with anything at all.

Origins Laboratory, Inc.
303.433.1322
o-squad@oelabinc.com



1725 Elk Place, Denver, CO 80211 | Phone: 303.433.1322 | Fax: 303.265.9645

Eagle Environmental Consulting, Inc.

8000 W 44th Ave

Wheat Ridge CO 80033

Martin C Eckert III

Project Number: 425777561

Project: Noble - Dinner #6-34

CROSS REFERENCE REPORT

| Sample ID | Laboratory ID | Matrix | Date Sampled | Date Received |
|-------------|---------------|--------|---------------------|------------------|
| WV-SS-01@3' | Y104141-01 | Soil | April 5, 2021 11:45 | 04/08/2021 15:05 |
| WV-FS-01@6' | Y104141-02 | Soil | April 5, 2021 11:50 | 04/08/2021 15:05 |

Origins Laboratory, Inc.



The results in this report apply to the samples analyzed in accordance with the chain of custody document. This analytical report must be reproduced in its entirety.

Eagle Environmental Consulting, Inc.
8000 W 44th Ave
Wheat Ridge CO 80033

Martin C Eckert III
Project Number: 425777561
Project: Noble - Dinner #6-34

Origins Laboratory

Sample Receipt Checklist

Origins Work Order: Y104141

Client: Eagle

Client Project ID: Noble-Dinner

Checklist Completed by: Jm

Date/time completed: 4-9-21

Shipped Via: HD

Airbill #: 4278

Matrix(s) Received: (Check all that apply) ☒ Soil/Solid ☐ Water ☐ Other: _____

Cooler Number/Temperature: 142 °C _____ °C (Describe) _____ °C

Thermometer ID: TB03

| Requirement Description | Yes | No | N/A | Comments (if any) |
|---|-------------------------------------|-------------------------------------|-------------------------------------|-------------------|
| If samples require cooling, was the temperature between 0°C to ≤ 6°C ⁽¹⁾ ? | <input checked="" type="checkbox"/> | | | |
| Is there ice present (document if blue ice is used) | <input checked="" type="checkbox"/> | | | |
| Are custody seals present on cooler? (If so, document in comments if they are signed and dated, broken or intact) | | <input checked="" type="checkbox"/> | | |
| Are custody seals present on each sample container? (If so, document in comments if they are signed and dated, broken or intact) | | <input checked="" type="checkbox"/> | | |
| Were all samples received intact ⁽¹⁾ ? | <input checked="" type="checkbox"/> | | | |
| Was adequate sample volume provided ⁽¹⁾ ? | <input checked="" type="checkbox"/> | | | |
| Are short holding time analytes or samples with HTs due within 48 hours present ⁽¹⁾ ? | | <input checked="" type="checkbox"/> | | |
| Is a chain-of-custody (COC) present and filled out completely ⁽¹⁾ ? | <input checked="" type="checkbox"/> | | | |
| Does the COC agree with the number and type of sample bottles received ⁽¹⁾ ? | <input checked="" type="checkbox"/> | | | |
| Do the sample IDs on the bottle labels match the COC ⁽¹⁾ ? | <input checked="" type="checkbox"/> | | | |
| Is the COC properly relinquished by the client with date and time recorded ⁽¹⁾ ? | <input checked="" type="checkbox"/> | | | |
| For volatiles in water – is there headspace (> ¼ inch bubble) present? If yes, contact client and note in narrative. | | | <input checked="" type="checkbox"/> | |
| Are samples preserved that require preservation and was it checked ⁽¹⁾ ? (note ID of confirmation instrument used in comments) / (preservation is not confirmed for subcontracted analyses in order to insure sample integrity) (pH < 2 for samples preserved with HNO ₃ , HCL, H ₂ SO ₄) / (pH > 10 for samples preserved with NaAsO ₂ +NaOH, ZnAc+NaOH) | | | <input checked="" type="checkbox"/> | |
| Additional Comments (if any): | | | | |

⁽¹⁾ If NO, then contact the client before proceeding with analysis and note date/time and person contacted as well as the corrective action to in the additional comments (above) and the case narrative.

Reviewed by (Project Manager) Jm Date/Time Reviewed 4-9-21

Origins Laboratory, Inc.

Jm

The results in this report apply to the samples analyzed in accordance with the chain of custody document. This analytical report must be reproduced in its entirety.

Eagle Environmental Consulting, Inc.
8000 W 44th Ave
Wheat Ridge CO 80033

Martin C Eckert III
Project Number: 425777561
Project: Noble - Dinner #6-34

WV-SS-01@3'
4/5/2021 11:45:00AM

| Analyte | Result | Min Detection Limit | Reporting Limit | Units | Dilution | Batch | Prepared | Analyzed | Notes |
|---------|--------|---------------------|-----------------|-------|----------|-------|----------|----------|-------|
|---------|--------|---------------------|-----------------|-------|----------|-------|----------|----------|-------|

AAL, Inc.
Y104141-01 (Soil)

Boron (Sorbitol)

| | | | | | | | | |
|-------|-----|--|------|---|--------|------------|------------|--|
| Boron | 0.1 | | mg/L | 1 | [none] | 04/12/2021 | 04/14/2021 | |
|-------|-----|--|------|---|--------|------------|------------|--|

DRO/ORO by EPA 8015D

| | | | | | | | | |
|-----------------------------------|----|------|-------|---|---------|------------|------------|---|
| Diesel (C10-C28) | ND | 25.0 | mg/kg | 1 | B1D0909 | 04/09/2021 | 04/09/2021 | U |
| Residual Range Organics (C28-C40) | ND | 100 | " | " | " | " | " | U |

| | | | | | | | | |
|------------------------|--------|--------|--|--|---|---|---|--|
| Surrogate: o-Terphenyl | 57.5 % | 50-150 | | | " | " | " | |
|------------------------|--------|--------|--|--|---|---|---|--|

GBTEX+TMBs

| | | | | | | | | |
|-----------------------------|----|---------|-------|---|---------|------------|------------|---|
| 1,2,4-Trimethylbenzene | ND | 0.00200 | mg/kg | 1 | B1D0908 | 04/09/2021 | 04/09/2021 | U |
| 1,3,5-Trimethylbenzene | ND | 0.00200 | " | " | " | " | " | U |
| Benzene | ND | 0.00200 | " | " | " | " | " | U |
| Ethylbenzene | ND | 0.00200 | " | " | " | " | " | U |
| Toluene | ND | 0.00200 | " | " | " | " | " | U |
| Gasoline Range Hydrocarbons | ND | 0.200 | " | " | " | " | " | U |
| Xylenes, total | ND | 0.00200 | " | " | " | " | " | U |

| | | | | | | | | |
|----------------------------------|-------|--------|--|--|---|---|---|--|
| Surrogate: 1,2-Dichloroethane-d4 | 103 % | 70-130 | | | " | " | " | |
|----------------------------------|-------|--------|--|--|---|---|---|--|

Origins Laboratory, Inc.



The results in this report apply to the samples analyzed in accordance with the chain of custody document. This analytical report must be reproduced in its entirety.

Eagle Environmental Consulting, Inc.
8000 W 44th Ave
Wheat Ridge CO 80033

Martin C Eckert III
Project Number: 425777561
Project: Noble - Dinner #6-34

WV-SS-01@3'

4/5/2021 11:45:00AM

| Analyte | Result | Min Detection Limit | Reporting Limit | Units | Dilution | Batch | Prepared | Analyzed | Notes |
|---------|--------|---------------------|-----------------|-------|----------|-------|----------|----------|-------|
|---------|--------|---------------------|-----------------|-------|----------|-------|----------|----------|-------|

Origins Laboratory, Inc.
Y104141-01 (Soil)

GBTEX+TMBs

| | | | | | |
|---------------------------------|--------|--------|-------------|------------|------------|
| Surrogate: Toluene-d8 | 99.9 % | 70-130 | B1D09 08 | 04/09/2021 | 04/09/2021 |
| Surrogate: 4-Bromofluorobenzene | 98.1 % | 70-130 | " | " | " |

Metals (Saturated Paste Prep)

| | | | | | | |
|-----------|------|------|---|--------|------------|------------|
| Calcium | 1.31 | me/L | 1 | [none] | 04/12/2021 | 04/14/2021 |
| Magnesium | 0.45 | " | " | " | " | " |
| Sodium | 0.29 | " | " | " | " | " |

PAH by 8270D SIM

| | | | | | | | | |
|-----------------------|----|----------|---------|-------|---|---------|---|------------|
| 1-Methylnaphthalene | ND | 0.00048 | 0.00067 | mg/Kg | 1 | L546692 | " | 04/12/2021 |
| 2-Methylnaphthalene | ND | 0.000542 | 0.00067 | " | " | " | " | " |
| Acenaphthene | ND | 0.000431 | 0.00067 | " | " | " | " | " |
| Anthracene | ND | 0.000426 | 0.00067 | " | " | " | " | " |
| Benzo(a)anthracene | ND | 0.000441 | 0.00067 | " | " | " | " | " |
| Benzo(a)pyrene | ND | 0.000133 | 0.00067 | " | " | " | " | " |
| Benzo(b)fluoranthene | ND | 0.000138 | 0.00067 | " | " | " | " | " |
| Benzo(k)fluoranthene | ND | 0.000486 | 0.00067 | " | " | " | " | " |
| Chrysene | ND | 0.000256 | 0.00067 | " | " | " | " | " |
| Dibenz(a,h)anthracene | ND | 0.000279 | 0.00067 | " | " | " | " | " |
| Fluoranthene | ND | 0.000529 | 0.00067 | " | " | " | " | " |

Origins Laboratory, Inc.



The results in this report apply to the samples analyzed in accordance with the chain of custody document. This analytical report must be reproduced in its entirety.

Eagle Environmental Consulting, Inc.
8000 W 44th Ave
Wheat Ridge CO 80033

Martin C Eckert III
Project Number: 425777561
Project: Noble - Dinner #6-34

WV-SS-01@3'

4/5/2021 11:45:00AM

| Analyte | Result | Min Detection Limit | Reporting Limit | Units | Dilution | Batch | Prepared | Analyzed | Notes |
|---------|--------|---------------------|-----------------|-------|----------|-------|----------|----------|-------|
|---------|--------|---------------------|-----------------|-------|----------|-------|----------|----------|-------|

Waypoint Analytical, Inc.
Y104141-01 (Soil)

PAH by 8270D SIM

| | | | | | | | | |
|------------------------|----|----------|---------|-------|---|---------|------------|------------|
| Fluorene | ND | 0.000501 | 0.00067 | mg/Kg | 1 | L546692 | 04/12/2021 | 04/12/2021 |
| Indeno(1,2,3-cd)pyrene | ND | 0.000344 | 0.00067 | " | " | " | " | " |
| Naphthalene | ND | 0.000467 | 0.00067 | " | " | " | " | " |
| Pyrene | ND | 0.000387 | 0.00067 | " | " | " | " | " |

| | | | | | | | | |
|-----------------------------|--------|--|--------|--|--|---|---|---|
| Surrogate: 2-Fluorobiphenyl | 57.1 % | | 33-115 | | | " | " | " |
| Surrogate: 4-Terphenyl-d14 | 56.7 % | | 33-122 | | | " | " | " |
| Surrogate: Nitrobenzene-d5 | 64.1 % | | 29-110 | | | " | " | " |

pH in Soil by EPA 9045D

| | | | | | | | | |
|----|------|--|--|----------|---|---------|------------|------------|
| pH | 7.15 | | | pH Units | 1 | B1D1214 | 04/12/2021 | 04/12/2021 |
|----|------|--|--|----------|---|---------|------------|------------|

SAR by 20B Saturated Paste

| | | | | | | | | |
|-----|------|--|--|--|---|--------|------------|------------|
| SAR | 0.31 | | | | 1 | [none] | 04/12/2021 | 04/14/2021 |
|-----|------|--|--|--|---|--------|------------|------------|

Specific Conductance by Modified 9050A

| | | | | | | | | |
|---------------------------|-------|--|---------|----------|---|---------|------------|------------|
| Specific Conductance (EC) | 0.237 | | 0.00500 | mmhos/cm | 1 | B1D1215 | 04/12/2021 | 04/12/2021 |
|---------------------------|-------|--|---------|----------|---|---------|------------|------------|

Origins Laboratory, Inc.



The results in this report apply to the samples analyzed in accordance with the chain of custody document. This analytical report must be reproduced in its entirety.

Eagle Environmental Consulting, Inc.
8000 W 44th Ave
Wheat Ridge CO 80033

Martin C Eckert III
Project Number: 425777561
Project: Noble - Dinner #6-34

WV-FS-01@6'
4/5/2021 11:50:00AM

| Analyte | Result | Min Detection Limit | Reporting Limit | Units | Dilution | Batch | Prepared | Analyzed | Notes |
|---------|--------|---------------------|-----------------|-------|----------|-------|----------|----------|-------|
|---------|--------|---------------------|-----------------|-------|----------|-------|----------|----------|-------|

AAL, Inc.
Y104141-02 (Soil)

Boron (Sorbitol)

| | | | | | | | | |
|-------|-----|--|------|---|--------|------------|------------|--|
| Boron | 0.4 | | mg/L | 1 | [none] | 04/12/2021 | 04/14/2021 | |
|-------|-----|--|------|---|--------|------------|------------|--|

DRO/ORO by EPA 8015D

| | | | | | | | | |
|-----------------------------------|----|------|-------|---|---------|------------|------------|---|
| Diesel (C10-C28) | ND | 25.0 | mg/kg | 1 | B1D0909 | 04/09/2021 | 04/09/2021 | U |
| Residual Range Organics (C28-C40) | ND | 100 | " | " | " | " | " | U |

| | | | | | | | | |
|------------------------|--------|--------|--|--|---|---|---|--|
| Surrogate: o-Terphenyl | 62.8 % | 50-150 | | | " | " | " | |
|------------------------|--------|--------|--|--|---|---|---|--|

GBTEX+TMBs

| | | | | | | | | |
|-----------------------------|----|---------|-------|---|---------|------------|------------|---|
| 1,2,4-Trimethylbenzene | ND | 0.00200 | mg/kg | 1 | B1D0908 | 04/09/2021 | 04/12/2021 | U |
| 1,3,5-Trimethylbenzene | ND | 0.00200 | " | " | " | " | " | U |
| Benzene | ND | 0.00200 | " | " | " | " | " | U |
| Ethylbenzene | ND | 0.00200 | " | " | " | " | " | U |
| Toluene | ND | 0.00200 | " | " | " | " | " | U |
| Gasoline Range Hydrocarbons | ND | 0.200 | " | " | " | " | " | U |
| Xylenes, total | ND | 0.00200 | " | " | " | " | " | U |

| | | | | | | | | |
|----------------------------------|-------|--------|--|--|---|---|---|--|
| Surrogate: 1,2-Dichloroethane-d4 | 102 % | 70-130 | | | " | " | " | |
|----------------------------------|-------|--------|--|--|---|---|---|--|

Origins Laboratory, Inc.



The results in this report apply to the samples analyzed in accordance with the chain of custody document. This analytical report must be reproduced in its entirety.

Eagle Environmental Consulting, Inc.
8000 W 44th Ave
Wheat Ridge CO 80033

Martin C Eckert III
Project Number: 425777561
Project: Noble - Dinner #6-34

WV-FS-01@6'

4/5/2021 11:50:00AM

| Analyte | Result | Min Detection Limit | Reporting Limit | Units | Dilution | Batch | Prepared | Analyzed | Notes |
|---------|--------|---------------------|-----------------|-------|----------|-------|----------|----------|-------|
|---------|--------|---------------------|-----------------|-------|----------|-------|----------|----------|-------|

Origins Laboratory, Inc.
Y104141-02 (Soil)

GBTEX+TMBs

| | | | | | | | | | |
|---------------------------------|--------|--|--------|--|--|-------------|------------|------------|--|
| Surrogate: Toluene-d8 | 95.7 % | | 70-130 | | | B1D09 08 | 04/09/2021 | 04/12/2021 | |
| Surrogate: 4-Bromofluorobenzene | 96.6 % | | 70-130 | | | " | " | " | |

Metals (Saturated Paste Prep)

| | | | | | | | | | |
|-----------|------|--|--|------|---|--------|------------|------------|--|
| Calcium | 1.70 | | | me/L | 1 | [none] | 04/12/2021 | 04/14/2021 | |
| Magnesium | 0.84 | | | " | " | " | " | " | |
| Sodium | 0.78 | | | " | " | " | " | " | |

PAH by 8270D SIM

| | | | | | | | | | |
|-----------------------|----------|----------|---------|-------|---|---------|---|------------|---|
| 1-Methylnaphthalene | 0.00286 | 0.00048 | 0.00067 | mg/Kg | 1 | L546692 | " | 04/12/2021 | |
| 2-Methylnaphthalene | 0.00427 | 0.000542 | 0.00067 | " | " | " | " | " | |
| Acenaphthene | ND | 0.000431 | 0.00067 | " | " | " | " | " | |
| Anthracene | 0.000505 | 0.000426 | 0.00067 | " | " | " | " | " | J |
| Benzo(a)anthracene | ND | 0.000441 | 0.00067 | " | " | " | " | " | |
| Benzo(a)pyrene | 0.000318 | 0.000133 | 0.00067 | " | " | " | " | " | J |
| Benzo(b)fluoranthene | ND | 0.000138 | 0.00067 | " | " | " | " | " | |
| Benzo(k)fluoranthene | ND | 0.000486 | 0.00067 | " | " | " | " | " | |
| Chrysene | 0.00304 | 0.000256 | 0.00067 | " | " | " | " | " | |
| Dibenz(a,h)anthracene | ND | 0.000279 | 0.00067 | " | " | " | " | " | |
| Fluoranthene | ND | 0.000529 | 0.00067 | " | " | " | " | " | |
| Fluorene | 0.000874 | 0.000501 | 0.00067 | " | " | " | " | " | |

Origins Laboratory, Inc.

The results in this report apply to the samples analyzed in accordance with the chain of custody document. This analytical report must be reproduced in its entirety.

Eagle Environmental Consulting, Inc.
8000 W 44th Ave
Wheat Ridge CO 80033

Martin C Eckert III
Project Number: 425777561
Project: Noble - Dinner #6-34

WV-FS-01@6'

4/5/2021 11:50:00AM

| Analyte | Result | Min Detection Limit | Reporting Limit | Units | Dilution | Batch | Prepared | Analyzed | Notes |
|---------|--------|---------------------|-----------------|-------|----------|-------|----------|----------|-------|
|---------|--------|---------------------|-----------------|-------|----------|-------|----------|----------|-------|

Waypoint Analytical, Inc.
Y104141-02 (Soil)

PAH by 8270D SIM

| | | | | | | | | |
|------------------------|---------|----------|---------|-------|---|---------|------------|------------|
| Indeno(1,2,3-cd)pyrene | ND | 0.000344 | 0.00067 | mg/Kg | 1 | L546692 | 04/12/2021 | 04/12/2021 |
| Naphthalene | ND | 0.000467 | 0.00067 | " | " | " | " | " |
| Pyrene | 0.00144 | 0.000387 | 0.00067 | " | " | " | " | " |

| | | | | | | | | |
|-----------------------------|--------|--|--------|--|--|---|---|---|
| Surrogate: 2-Fluorobiphenyl | 54.3 % | | 33-115 | | | " | " | " |
| Surrogate: 4-Terphenyl-d14 | 76.5 % | | 33-122 | | | " | " | " |
| Surrogate: Nitrobenzene-d5 | 66.2 % | | 29-110 | | | " | " | " |

pH in Soil by EPA 9045D

| | | | | | | | | |
|----|------|--|--|----------|---|---------|------------|------------|
| pH | 6.45 | | | pH Units | 1 | B1D1214 | 04/12/2021 | 04/12/2021 |
|----|------|--|--|----------|---|---------|------------|------------|

SAR by 20B Saturated Paste

| | | | | | | | | |
|-----|------|--|--|--|---|--------|------------|------------|
| SAR | 0.69 | | | | 1 | [none] | 04/12/2021 | 04/14/2021 |
|-----|------|--|--|--|---|--------|------------|------------|

Specific Conductance by Modified 9050A

| | | | | | | | | |
|---------------------------|-------|--|---------|----------|---|---------|------------|------------|
| Specific Conductance (EC) | 0.409 | | 0.00500 | mmhos/cm | 1 | B1D1215 | 04/12/2021 | 04/12/2021 |
|---------------------------|-------|--|---------|----------|---|---------|------------|------------|

Origins Laboratory, Inc.



The results in this report apply to the samples analyzed in accordance with the chain of custody document. This analytical report must be reproduced in its entirety.

Eagle Environmental Consulting, Inc.
8000 W 44th Ave
Wheat Ridge CO 80033

Martin C Eckert III
Project Number: 425777561
Project: Noble - Dinner #6-34

Volatile Organic Compounds by GC/MS SW846 8260D - Quality Control
Origins Laboratory, Inc.

| Analyte | Result | Reporting Limit | Units | Spike Level | Source Result | %REC | %REC Limits | RPD | RPD Limit | Notes |
|--|--------|-----------------|-------|-------------|---|------|-------------|-----|-----------|-------|
| Batch B1D0908 - EPA 5030 (soil) | | | | | | | | | | |
| Blank (B1D0908-BLK1) | | | | | Prepared: 04/09/2021 Analyzed: 04/09/2021 | | | | | |
| 1,2,4-Trimethylbenzene | ND | 0.00200 | mg/kg | | | | | | | U |
| Naphthalene | ND | 0.0100 | " | | | | | | | U |
| 1,3,5-Trimethylbenzene | ND | 0.00200 | " | | | | | | | U |
| Benzene | ND | 0.00200 | " | | | | | | | U |
| Ethylbenzene | ND | 0.00200 | " | | | | | | | U |
| Toluene | ND | 0.00200 | " | | | | | | | U |
| Gasoline Range Hydrocarbons | ND | 0.200 | " | | | | | | | U |
| Xylenes, total | ND | 0.00200 | " | | | | | | | U |
| Surrogate: 1,2-Dichloroethane-d4 | 0.12 | | " | 0.125 | | 99.4 | 70-130 | | | |
| Surrogate: Toluene-d8 | 0.13 | | " | 0.125 | | 100 | 70-130 | | | |
| Surrogate: 4-Bromofluorobenzene | 0.12 | | " | 0.125 | | 97.7 | 70-130 | | | |

Origins Laboratory, Inc.



The results in this report apply to the samples analyzed in accordance with the chain of custody document. This analytical report must be reproduced in its entirety.

Eagle Environmental Consulting, Inc.
8000 W 44th Ave
Wheat Ridge CO 80033

Martin C Eckert III
Project Number: 425777561
Project: Noble - Dinner #6-34

Volatile Organic Compounds by GC/MS SW846 8260D - Quality Control
Origins Laboratory, Inc.

| Analyte | Result | Reporting Limit | Units | Spike Level | Source Result | %REC | %REC Limits | RPD | RPD Limit | Notes |
|--|--------|-----------------|-------|-------------|---|------|-------------|-----|-----------|-------|
| Batch B1D0908 - EPA 5030 (soil) | | | | | | | | | | |
| LCS (B1D0908-BS1) | | | | | Prepared: 04/09/2021 Analyzed: 04/09/2021 | | | | | |
| 1,2,4-Trimethylbenzene | 0.0572 | 0.00200 | mg/kg | 0.0500 | | 114 | 70-130 | | | |
| Naphthalene | 0.0559 | 0.0100 | " | 0.0500 | | 112 | 70-130 | | | |
| 1,3,5-Trimethylbenzene | 0.0570 | 0.00200 | " | 0.0500 | | 114 | 70-130 | | | |
| Benzene | 0.0539 | 0.00200 | " | 0.0500 | | 108 | 70-130 | | | |
| Ethylbenzene | 0.0554 | 0.00200 | " | 0.0500 | | 111 | 70-130 | | | |
| m,p-Xylene | 0.110 | 0.00400 | " | 0.100 | | 110 | 70-130 | | | |
| o-Xylene | 0.0567 | 0.00200 | " | 0.0500 | | 113 | 70-130 | | | |
| Toluene | 0.0531 | 0.00200 | " | 0.0500 | | 106 | 70-130 | | | |
| Surrogate: 1,2-Dichloroethane-d4 | 0.12 | | " | 0.125 | | 97.4 | 70-130 | | | |
| Surrogate: Toluene-d8 | 0.12 | | " | 0.125 | | 98.4 | 70-130 | | | |
| Surrogate: 4-Bromofluorobenzene | 0.13 | | " | 0.125 | | 100 | 70-130 | | | |

Origins Laboratory, Inc.



The results in this report apply to the samples analyzed in accordance with the chain of custody document. This analytical report must be reproduced in its entirety.

Eagle Environmental Consulting, Inc.
8000 W 44th Ave
Wheat Ridge CO 80033

Martin C Eckert III
Project Number: 425777561
Project: Noble - Dinner #6-34

Volatile Organic Compounds by GC/MS SW846 8260D - Quality Control
Origins Laboratory, Inc.

| Analyte | Result | Reporting Limit | Units | Spike Level | Source Result | %REC | %REC Limits | RPD | RPD Limit | Notes |
|--|--------|---------------------------|-------|-------------|---|------|-------------|-----|-----------|-------|
| Batch B1D0908 - EPA 5030 (soil) | | | | | | | | | | |
| Matrix Spike (B1D0908-MS1) | | Source: Y104141-01 | | | Prepared: 04/09/2021 Analyzed: 04/09/2021 | | | | | |
| 1,2,4-Trimethylbenzene | 0.0579 | 0.00200 | mg/kg | 0.0500 | ND | 116 | 70-130 | | | |
| Naphthalene | 0.0607 | 0.0100 | " | 0.0500 | ND | 121 | 70-130 | | | |
| 1,3,5-Trimethylbenzene | 0.0565 | 0.00200 | " | 0.0500 | ND | 113 | 70-130 | | | |
| Benzene | 0.0534 | 0.00200 | " | 0.0500 | ND | 107 | 70-130 | | | |
| Ethylbenzene | 0.0551 | 0.00200 | " | 0.0500 | ND | 110 | 70-130 | | | |
| m,p-Xylene | 0.110 | 0.00400 | " | 0.100 | ND | 110 | 70-130 | | | |
| o-Xylene | 0.0545 | 0.00200 | " | 0.0500 | ND | 109 | 70-130 | | | |
| Toluene | 0.0528 | 0.00200 | " | 0.0500 | ND | 106 | 70-130 | | | |
| Surrogate: 1,2-Dichloroethane-d4 | 0.13 | | " | 0.125 | | 101 | 70-130 | | | |
| Surrogate: Toluene-d8 | 0.12 | | " | 0.125 | | 99.0 | 70-130 | | | |
| Surrogate: 4-Bromofluorobenzene | 0.13 | | " | 0.125 | | 101 | 70-130 | | | |

Origins Laboratory, Inc.



The results in this report apply to the samples analyzed in accordance with the chain of custody document. This analytical report must be reproduced in its entirety.

Eagle Environmental Consulting, Inc.
8000 W 44th Ave
Wheat Ridge CO 80033

Martin C Eckert III
Project Number: 425777561
Project: Noble - Dinner #6-34

Volatile Organic Compounds by GC/MS SW846 8260D - Quality Control
Origins Laboratory, Inc.

| Analyte | Result | Reporting Limit | Units | Spike Level | Source Result | %REC | %REC Limits | RPD | RPD Limit | Notes |
|--|--------|---------------------------|-------|-------------|---|------|-------------|------|-----------|-------|
| Batch B1D0908 - EPA 5030 (soil) | | | | | | | | | | |
| Matrix Spike Dup (B1D0908-MSD1) | | Source: Y104141-01 | | | Prepared: 04/09/2021 Analyzed: 04/09/2021 | | | | | |
| 1,2,4-Trimethylbenzene | 0.0545 | 0.00200 | mg/kg | 0.0500 | ND | 109 | 70-130 | 5.94 | 20 | |
| Naphthalene | 0.0578 | 0.0100 | " | 0.0500 | ND | 116 | 70-130 | 4.86 | 20 | |
| 1,3,5-Trimethylbenzene | 0.0537 | 0.00200 | " | 0.0500 | ND | 107 | 70-130 | 4.97 | 20 | |
| Benzene | 0.0515 | 0.00200 | " | 0.0500 | ND | 103 | 70-130 | 3.59 | 20 | |
| Ethylbenzene | 0.0569 | 0.00200 | " | 0.0500 | ND | 114 | 70-130 | 3.32 | 20 | |
| m,p-Xylene | 0.115 | 0.00400 | " | 0.100 | ND | 115 | 70-130 | 3.99 | 20 | |
| o-Xylene | 0.0582 | 0.00200 | " | 0.0500 | ND | 116 | 70-130 | 6.56 | 20 | |
| Toluene | 0.0509 | 0.00200 | " | 0.0500 | ND | 102 | 70-130 | 3.66 | 20 | |
| Surrogate: 1,2-Dichloroethane-d4 | 0.12 | | " | 0.125 | | 98.4 | 70-130 | | | |
| Surrogate: Toluene-d8 | 0.12 | | " | 0.125 | | 98.7 | 70-130 | | | |
| Surrogate: 4-Bromofluorobenzene | 0.13 | | " | 0.125 | | 104 | 70-130 | | | |

Origins Laboratory, Inc.



The results in this report apply to the samples analyzed in accordance with the chain of custody document. This analytical report must be reproduced in its entirety.

Eagle Environmental Consulting, Inc.
8000 W 44th Ave
Wheat Ridge CO 80033

Martin C Eckert III
Project Number: 425777561
Project: Noble - Dinner #6-34

Volatile Organic Compounds by GC/MS SW846 8260D - Quality Control
Origins Laboratory, Inc.

| Analyte | Result | Reporting Limit | Units | Spike Level | Source Result | %REC | %REC Limits | RPD | RPD Limit | Notes |
|---------|--------|-----------------|-------|-------------|---------------|------|-------------|-----|-----------|-------|
|---------|--------|-----------------|-------|-------------|---------------|------|-------------|-----|-----------|-------|

Batch B1D0909 - EPA 3550B

Blank (B1D0909-BLK1)

Prepared: 04/09/2021 Analyzed: 04/09/2021

| | | | | | | | | | | |
|-----------------------------------|----|------|-------|------|--|------|--------|--|--|---|
| Diesel (C10-C28) | ND | 25.0 | mg/kg | | | | | | | U |
| Residual Range Organics (C28-C40) | ND | 100 | " | | | | | | | U |
| Surrogate: o-Terphenyl | 18 | | " | 25.0 | | 73.8 | 50-150 | | | |

Origins Laboratory, Inc.



The results in this report apply to the samples analyzed in accordance with the chain of custody document. This analytical report must be reproduced in its entirety.

Eagle Environmental Consulting, Inc.
8000 W 44th Ave
Wheat Ridge CO 80033

Martin C Eckert III
Project Number: 425777561
Project: Noble - Dinner #6-34

Extractable Petroleum Hydrocarbons by 8015D - Quality Control
Origins Laboratory, Inc.

| Analyte | Result | Reporting Limit | Units | Spike Level | Source Result | %REC | %REC Limits | RPD | RPD Limit | Notes |
|-----------------------------------|--------|-----------------|-------|-------------|---|------|-------------|-----|-----------|-------|
| Batch B1D0909 - EPA 3550B | | | | | | | | | | |
| LCS (B1D0909-BS1) | | | | | Prepared: 04/09/2021 Analyzed: 04/09/2021 | | | | | |
| Diesel (C10-C28) | 928 | 50.0 | mg/kg | 1000 | | 92.8 | 70-130 | | | |
| Residual Range Organics (C28-C40) | 885 | 200 | " | 1000 | | 88.5 | 70-130 | | | |
| Surrogate: o-Terphenyl | 39 | | " | 50.0 | | 78.1 | 50-150 | | | |

Origins Laboratory, Inc.



The results in this report apply to the samples analyzed in accordance with the chain of custody document. This analytical report must be reproduced in its entirety.

Eagle Environmental Consulting, Inc.
8000 W 44th Ave
Wheat Ridge CO 80033

Martin C Eckert III
Project Number: 425777561
Project: Noble - Dinner #6-34

Extractable Petroleum Hydrocarbons by 8015D - Quality Control
Origins Laboratory, Inc.

| Analyte | Result | Reporting Limit | Units | Spike Level | Source Result | %REC | %REC Limits | RPD | RPD Limit | Notes |
|---------|--------|-----------------|-------|-------------|---------------|------|-------------|-----|-----------|-------|
|---------|--------|-----------------|-------|-------------|---------------|------|-------------|-----|-----------|-------|

Batch B1D0909 - EPA 3550B

| Matrix Spike (B1D0909-MS1) | | Source: Y104141-01 | | | Prepared: 04/09/2021 Analyzed: 04/09/2021 | | | | | |
|-----------------------------------|-----|--------------------|-------|------|---|------|--------|--|--|--|
| Diesel (C10-C28) | 930 | 50.0 | mg/kg | 1000 | ND | 93.0 | 70-130 | | | |
| Residual Range Organics (C28-C40) | 879 | 200 | " | 1000 | ND | 87.9 | 70-130 | | | |
| Surrogate: o-Terphenyl | 37 | | " | 50.0 | | 74.7 | 50-150 | | | |

Origins Laboratory, Inc.



The results in this report apply to the samples analyzed in accordance with the chain of custody document. This analytical report must be reproduced in its entirety.

Eagle Environmental Consulting, Inc.
8000 W 44th Ave
Wheat Ridge CO 80033

Martin C Eckert III
Project Number: 425777561
Project: Noble - Dinner #6-34

Extractable Petroleum Hydrocarbons by 8015D - Quality Control Origins Laboratory, Inc.

| Analyte | Result | Reporting Limit | Units | Spike Level | Source Result | %REC | %REC Limits | RPD | RPD Limit | Notes |
|---------|--------|-----------------|-------|-------------|---------------|------|-------------|-----|-----------|-------|
|---------|--------|-----------------|-------|-------------|---------------|------|-------------|-----|-----------|-------|

Batch B1D0909 - EPA 3550B

| Matrix Spike Dup (B1D0909-MSD1) | | Source: Y104141-01 | | | Prepared: 04/09/2021 Analyzed: 04/09/2021 | | | | | |
|-----------------------------------|-----|--------------------|-------|------|---|------|--------|------|----|--|
| Diesel (C10-C28) | 867 | 50.0 | mg/kg | 1000 | ND | 86.7 | 70-130 | 6.96 | 35 | |
| Residual Range Organics (C28-C40) | 812 | 200 | " | 1000 | ND | 81.2 | 70-130 | 7.83 | 35 | |
| Surrogate: o-Terphenyl | 34 | | " | 50.0 | | 68.4 | 50-150 | | | |

Origins Laboratory, Inc.



The results in this report apply to the samples analyzed in accordance with the chain of custody document. This analytical report must be reproduced in its entirety.

Eagle Environmental Consulting, Inc.
8000 W 44th Ave
Wheat Ridge CO 80033

Martin C Eckert III
Project Number: 425777561
Project: Noble - Dinner #6-34

Extractable Petroleum Hydrocarbons by 8015D - Quality Control

Origins Laboratory, Inc.

| Analyte | Result | Reporting Limit | Units | Spike Level | Source Result | %REC | %REC Limits | RPD | RPD Limit | Notes |
|---------|--------|-----------------|-------|-------------|---------------|------|-------------|-----|-----------|-------|
|---------|--------|-----------------|-------|-------------|---------------|------|-------------|-----|-----------|-------|

Saturated Paste - Quality Control

Origins Laboratory, Inc.

| Analyte | Result | Reporting Limit | Units | Spike Level | Source Result | %REC | %REC Limits | RPD | RPD Limit | Notes |
|---------|--------|-----------------|-------|-------------|---------------|------|-------------|-----|-----------|-------|
|---------|--------|-----------------|-------|-------------|---------------|------|-------------|-----|-----------|-------|

Batch B1D1214 - NO PREP

| | | | | | | | | | | |
|---------------------------------|------|---------------------------|----------|--|---|--|--|------|----|--|
| Duplicate (B1D1214-DUP1) | | Source: Y104141-01 | | | Prepared: 04/12/2021 Analyzed: 04/12/2021 | | | | | |
| pH | 7.23 | | pH Units | | 7.15 | | | 1.11 | 25 | |

Batch B1D1215 - NO PREP

| | | | | | | | | | | |
|---------------------------------|---------|---|----------|--|---|--|--|------|----|--|
| Blank (B1D1215-BLK1) | | Prepared: 04/12/2021 Analyzed: 04/12/2021 | | | | | | | | |
| Specific Conductance (EC) | 0.00210 | 0.00500 | mmhos/cm | | | | | | | |
| Duplicate (B1D1215-DUP1) | | Source: Y104141-01 | | | Prepared: 04/12/2021 Analyzed: 04/12/2021 | | | | | |
| Specific Conductance (EC) | 0.243 | 0.00500 | mmhos/cm | | 0.237 | | | 2.42 | 25 | |

Origins Laboratory, Inc.



The results in this report apply to the samples analyzed in accordance with the chain of custody document. This analytical report must be reproduced in its entirety.

Eagle Environmental Consulting, Inc.
8000 W 44th Ave
Wheat Ridge CO 80033

Martin C Eckert III
Project Number: 425777561
Project: Noble - Dinner #6-34

PAH by 8270D SIM - Quality Control
Waypoint Analytical, Inc.

| Analyte | Result | Reporting Limit | Units | Spike Level | Source Result | %REC | %REC Limits | RPD | RPD Limit | Notes |
|---------|--------|-----------------|-------|-------------|---------------|------|-------------|-----|-----------|-------|
|---------|--------|-----------------|-------|-------------|---------------|------|-------------|-----|-----------|-------|

Batch L546692 - 3550B

| MSD (L 90165-MSD-L546692) | | Source: 90165 | | | Prepared: 04/12/2021 Analyzed: 04/12/2021 | | | | | |
|-----------------------------|--------|---------------|-------|-------|---|------|--------|------|----|--|
| Chrysene | 0.147 | 0.000256 | mg/Kg | 0.162 | 0.0307 | 71.7 | 30-130 | 10.7 | 30 | |
| 1-Methylnaphthalene | 0.109 | 0.00048 | " | 0.162 | 0.000714 | 66.8 | 30-130 | 2.7 | 30 | |
| 2-Methylnaphthalene | 0.104 | 0.000542 | " | 0.162 | 0.00208 | 62.9 | 30-130 | 2.9 | 30 | |
| Acenaphthene | 0.107 | 0.000431 | " | 0.162 | 0.00765 | 61.3 | 30-130 | 2.8 | 30 | |
| Anthracene | 0.135 | 0.000426 | " | 0.162 | 0.0202 | 70.8 | 30-130 | 7.6 | 30 | |
| Benzo(a)anthracene | 0.186 | 0.000441 | " | 0.162 | 0.0555 | 80.5 | 30-130 | 11.9 | 30 | |
| Pyrene | 0.299 | 0.000387 | " | 0.162 | 0.194 | 64.8 | 30-130 | 30.4 | 30 | |
| Naphthalene | 0.0982 | 0.000467 | " | 0.162 | 90165 | 60.6 | 30-130 | 2.1 | 30 | |
| Indeno(1,2,3-cd)pyrene | 0.1 | 0.000344 | " | 0.162 | 0.00952 | 55.8 | 30-130 | 10.3 | 30 | |
| Fluorene | 0.122 | 0.000501 | " | 0.162 | 0.013 | 67.2 | 30-130 | 5 | 30 | |
| Fluoranthene | 0.221 | 0.000529 | " | 0.162 | 0.129 | 56.7 | 30-130 | 24.9 | 30 | |
| Dibenz(a,h)anthracene | 0.0941 | 0.000279 | " | 0.162 | 0.00288 | 56.3 | 30-130 | 7.2 | 30 | |
| Benzo(b)fluoranthene | 0.127 | 0.000138 | " | 0.162 | 0.0375 | 55.2 | 30-130 | 9.9 | 30 | |
| Benzo(k)fluoranthene | 0.112 | 0.000486 | " | 0.162 | 0.0149 | 59.9 | 30-130 | 15.2 | 30 | |
| Benzo(a)pyrene | 0.169 | 0.000133 | " | 0.162 | 0.0323 | 84.3 | 30-130 | 8.6 | 30 | |
| Surrogate: 2-Fluorobiphenyl | 48.3 | | " | 0.325 | 155 | 48.3 | 33-115 | | | |
| Surrogate: 4-Terphenyl-d14 | 61.2 | | " | 0.325 | 198 | 61.2 | 33-122 | | | |
| Surrogate: Nitrobenzene-d5 | 61.2 | | " | 0.325 | 182 | 61.2 | 29-110 | | | |

| MS (L 90165-MS-L546692) | | Source: 90165 | | | Prepared: 04/12/2021 Analyzed: 04/12/2021 | | | | | |
|-------------------------|--------|---------------|-------|-------|---|------|--------|--|--|---|
| Benzo(a)pyrene | 0.155 | 0.000133 | mg/Kg | 0.163 | 0.0323 | 75.2 | 30-130 | | | |
| Chrysene | 0.132 | 0.000256 | " | 0.163 | 0.0307 | 62.1 | 30-130 | | | |
| Pyrene | 0.22 | 0.000387 | " | 0.163 | 0.194 | 15.9 | 30-130 | | | * |
| Naphthalene | 0.0961 | 0.000467 | " | 0.163 | 90165 | 58.9 | 30-130 | | | |
| Indeno(1,2,3-cd)pyrene | 0.0902 | 0.000344 | " | 0.163 | 0.00952 | 49.4 | 30-130 | | | |
| Fluorene | 0.116 | 0.000501 | " | 0.163 | 0.013 | 63.1 | 30-130 | | | |
| Fluoranthene | 0.172 | 0.000529 | " | 0.163 | 0.129 | 26.3 | 30-130 | | | * |

Origins Laboratory, Inc.

The results in this report apply to the samples analyzed in accordance with the chain of custody document. This analytical report must be reproduced in its entirety.

Eagle Environmental Consulting, Inc.
8000 W 44th Ave
Wheat Ridge CO 80033

Martin C Eckert III
Project Number: 425777561
Project: Noble - Dinner #6-34

PAH by 8270D SIM - Quality Control
Waypoint Analytical, Inc.

| Analyte | Result | Reporting Limit | Units | Spike Level | Source Result | %REC | %REC Limits | RPD | RPD Limit | Notes |
|---------|--------|-----------------|-------|-------------|---------------|------|-------------|-----|-----------|-------|
|---------|--------|-----------------|-------|-------------|---------------|------|-------------|-----|-----------|-------|

Batch L546692 - 3550B

| MS (L 90165-MS-L546692) | | Source: 90165 | | | Prepared: 04/12/2021 Analyzed: 04/12/2021 | | | | | |
|-----------------------------|--------|---------------|-------|-------|---|------|--------|--|--|--|
| Dibenz(a,h)anthracene | 0.0875 | 0.000279 | mg/Kg | 0.163 | 0.00288 | 51.9 | 30-130 | | | |
| Benzo(b)fluoranthene | 0.115 | 0.000138 | " | 0.163 | 0.0375 | 47.5 | 30-130 | | | |
| Benzo(a)anthracene | 0.165 | 0.000441 | " | 0.163 | 0.0555 | 67.1 | 30-130 | | | |
| Anthracene | 0.125 | 0.000426 | " | 0.163 | 0.0202 | 64.2 | 30-130 | | | |
| Acenaphthene | 0.104 | 0.000431 | " | 0.163 | 0.00765 | 59.1 | 30-130 | | | |
| 2-Methylnaphthalene | 0.101 | 0.000542 | " | 0.163 | 0.00208 | 60.6 | 30-130 | | | |
| Benzo(k)fluoranthene | 0.0961 | 0.000486 | " | 0.163 | 0.0149 | 49.8 | 30-130 | | | |
| 1-Methylnaphthalene | 0.106 | 0.00048 | " | 0.163 | 0.000714 | 64.5 | 30-130 | | | |
| Surrogate: Nitrobenzene-d5 | 57.4 | | " | 0.327 | 182 | 57.4 | 29-110 | | | |
| Surrogate: 2-Fluorobiphenyl | 46.4 | | " | 0.327 | 155 | 46.4 | 33-115 | | | |
| Surrogate: 4-Terphenyl-d14 | 58.4 | | " | 0.327 | 198 | 58.4 | 33-122 | | | |

LCS (LCS-L546692)

Prepared: 04/12/2021 Analyzed: 04/12/2021

| | | | | | | | |
|------------------------|--------|----------|-------|-------|--|------|--------|
| Dibenz(a,h)anthracene | 0.0886 | 0.000279 | mg/Kg | 0.167 | | 53 | 30-130 |
| Fluoranthene | 0.11 | 0.000529 | " | 0.167 | | 65.8 | 30-130 |
| Pyrene | 0.105 | 0.000387 | " | 0.167 | | 62.8 | 30-130 |
| Fluorene | 0.115 | 0.000501 | " | 0.167 | | 68.8 | 30-130 |
| Indeno(1,2,3-cd)pyrene | 0.0862 | 0.000344 | " | 0.167 | | 51.6 | 30-130 |
| Chrysene | 0.113 | 0.000256 | " | 0.167 | | 67.6 | 30-130 |
| Naphthalene | 0.102 | 0.000467 | " | 0.167 | | 61 | 30-130 |
| Benzo(b)fluoranthene | 0.0976 | 0.000138 | " | 0.167 | | 58.4 | 30-130 |
| Benzo(a)pyrene | 0.133 | 0.000133 | " | 0.167 | | 79.6 | 30-130 |
| Benzo(a)anthracene | 0.126 | 0.000441 | " | 0.167 | | 75.4 | 30-130 |
| Acenaphthene | 0.105 | 0.000431 | " | 0.167 | | 62.8 | 30-130 |
| 2-Methylnaphthalene | 0.108 | 0.000542 | " | 0.167 | | 64.6 | 30-130 |
| 1-Methylnaphthalene | 0.107 | 0.00048 | " | 0.167 | | 64 | 30-130 |
| Anthracene | 0.114 | 0.000426 | " | 0.167 | | 68.2 | 30-130 |

Origins Laboratory, Inc.

The results in this report apply to the samples analyzed in accordance with the chain of custody document. This analytical report must be reproduced in its entirety.

Eagle Environmental Consulting, Inc.
8000 W 44th Ave
Wheat Ridge CO 80033

Martin C Eckert III
Project Number: 425777561
Project: Noble - Dinner #6-34

PAH by 8270D SIM - Quality Control
Waypoint Analytical, Inc.

| Analyte | Result | Reporting Limit | Units | Spike Level | Source Result | %REC | %REC Limits | RPD | RPD Limit | Notes |
|---------|--------|-----------------|-------|-------------|---------------|------|-------------|-----|-----------|-------|
|---------|--------|-----------------|-------|-------------|---------------|------|-------------|-----|-----------|-------|

Batch L546692 - 3550B

LCS (LCS-L546692)

Prepared: 04/12/2021 Analyzed: 04/12/2021

| | | | | | | | | | | |
|-----------------------------|------|----------|-------|-------|--|------|--------|--|--|--|
| Benzo(k)fluoranthene | 0.09 | 0.000486 | mg/Kg | 0.167 | | 53.8 | 30-130 | | | |
| Surrogate: Nitrobenzene-d5 | 60 | | " | 0.333 | | 60 | 29-110 | | | |
| Surrogate: 4-Terphenyl-d14 | 57.6 | | " | 0.333 | | 57.6 | 33-122 | | | |
| Surrogate: 2-Fluorobiphenyl | 55.2 | | " | 0.333 | | 55.2 | 33-115 | | | |

LRB (LRB-L546692)

Prepared: 04/12/2021 Analyzed: 04/12/2021

| | | | | | | | | | | |
|-----------------------------|------|---------|-------|-------|--|------|--------|--|--|--|
| Chrysene | ND | 0.00067 | mg/Kg | | | | - | | | |
| Dibenz(a,h)anthracene | ND | 0.00067 | " | | | | - | | | |
| Fluoranthene | ND | 0.00067 | " | | | | - | | | |
| Fluorene | ND | 0.00067 | " | | | | - | | | |
| Benzo(k)fluoranthene | ND | 0.00067 | " | | | | - | | | |
| Naphthalene | ND | 0.00067 | " | | | | - | | | |
| Indeno(1,2,3-cd)pyrene | ND | 0.00067 | " | | | | - | | | |
| Benzo(b)fluoranthene | ND | 0.00067 | " | | | | - | | | |
| Benzo(a)pyrene | ND | 0.00067 | " | | | | - | | | |
| Benzo(a)anthracene | ND | 0.00067 | " | | | | - | | | |
| Acenaphthene | ND | 0.00067 | " | | | | - | | | |
| 2-Methylnaphthalene | ND | 0.00067 | " | | | | - | | | |
| 1-Methylnaphthalene | ND | 0.00067 | " | | | | - | | | |
| Pyrene | ND | 0.00067 | " | | | | - | | | |
| Anthracene | ND | 0.00067 | " | | | | - | | | |
| Surrogate: Nitrobenzene-d5 | 63.3 | | " | 0.333 | | 63.3 | 29-110 | | | |
| Surrogate: 4-Terphenyl-d14 | 62.1 | | " | 0.333 | | 62.1 | 33-122 | | | |
| Surrogate: 2-Fluorobiphenyl | 57 | | " | 0.333 | | 57 | 33-115 | | | |

Origins Laboratory, Inc.



The results in this report apply to the samples analyzed in accordance with the chain of custody document. This analytical report must be reproduced in its entirety.

Eagle Environmental Consulting, Inc.

8000 W 44th Ave

Wheat Ridge CO 80033

Martin C Eckert III

Project Number: 425777561

Project: Noble - Dinner #6-34

Notes and Definitions

U Sample is Non-Detect.

J Estimated Value. Analyte below reported quantitation limit.

* QC Failure

ND Analyte NOT DETECTED at or above the reporting limit

RPD Relative Percent Difference

All soil results are reported on a wet weight basis.

Origins Laboratory, Inc.



The results in this report apply to the samples analyzed in accordance with the chain of custody document. This analytical report must be reproduced in its entirety.

DATE REPORTED: 04/14/2021

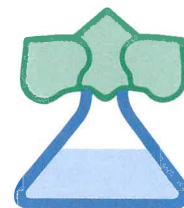
Recommendations By: American Agricultural Lab

American Agricultural Laboratory, Inc.

700 West D St. / P.O. Box 370 / McCook, Nebraska 69001

Office: 308-345-3670 / FAX: 308-345-7880 / www.AmAgLab.com

"Analysis You Can Grow With"®



ORIGINS LABORATORY INC
1725 ELK PLACE
DENVER, CO 80211

DATE RECEIVED: 4/12/2021
DATE REPORTED: 4/14/2021
ACCOUNT NO: 95029
GROWER: ORIGINS

SOIL BORON REPORT

| Lab # | Field ID | Sample ID | B, mg/L |
|--------|----------|-----------|---------|
| 331149 | Y104141 | 1 | 0.1 |
| 331150 | Y104141 | 2 | 0.4 |

Bab Oker

Method Used:

Provin, T., and H. Zhang. 2014. DTPA and DTPA-Sorbitol Extraction of Micronutrients.
Soil Test Methods From the Southeastern United States 2014



April 16, 2021

Eagle Environmental Consulting, Inc.

Martin C Eckert III

8000 W 44th Ave

Wheat Ridge CO 80033

Project Name - Noble - Dinner #6-34

Project Number - 425777561

Attached are your analytical results for Noble - Dinner #6-34 received by Origins Laboratory, Inc. April 08, 2021. This project is associated with Origins project number Y104150-01.

The analytical results in the following report were analyzed under the guidelines of EPA Methods. These methods are identified as follows; "SW" are defined in SW-846, "EPA" are defined in 40CFR part 136 and "SM" are defined in the most current revision of Standard Methods For the Examination of Water and Wastewater.

The analytical results apply specifically to the samples and analyses specified per the attached Chain of Custody. As such, this report shall not be reproduced except in full, without the written approval of Origin's laboratory.

Unless otherwise noted, the analytical results for all soil samples are reported on a wet weight basis. All analytical analyses were performed under NELAP guidelines unless noted by a data qualifier.

Any holding time exceedances, deviations from the method specifications or deviations from Origins Laboratory's Standard Operating Procedures are outlined in the case narrative.

Thank you for selecting Origins for your analytical needs. Please contact us with any questions concerning this report, or if we can help with anything at all.

Origins Laboratory, Inc.
303.433.1322
o-squad@oelabinc.com



1725 Elk Place, Denver, CO 80211 | Phone: 303.433.1322 | Fax: 303.265.9645

Eagle Environmental Consulting, Inc.

8000 W 44th Ave

Wheat Ridge CO 80033

Martin C Eckert III

Project Number: 425777561

Project: Noble - Dinner #6-34

CROSS REFERENCE REPORT

| Sample ID | Laboratory ID | Matrix | Date Sampled | Date Received |
|-----------------|---------------|--------|---------------------|------------------|
| TB-SS-01@4' | Y104150-01 | Soil | April 5, 2021 11:55 | 04/08/2021 15:05 |
| TB-SS-06@0-0.5' | Y104150-02 | Soil | April 5, 2021 12:22 | 04/08/2021 15:05 |

Origins Laboratory, Inc.



The results in this report apply to the samples analyzed in accordance with the chain of custody document. This analytical report must be reproduced in its entirety.

Eagle Environmental Consulting, Inc.
8000 W 44th Ave
Wheat Ridge CO 80033

Martin C Eckert III
Project Number: 425777561
Project: Noble - Dinner #6-34

Origins Laboratory

F-012207-01-R1
Effective Date: 01/09/12

Sample Receipt Checklist

Origins Work Order: Y104150

Client: Eagle

Client Project ID: dinner

Checklist Completed by: SGKDK

Shipped Via: HD
(UPS, FedEx, Hand Delivered, Pick-up, etc.)

Date/time completed: 04/08/21

Airbill #: N/A

Matrix(s) Received: (Check all that apply): ☒ Soil/Solid ☐ Water ☐ Other: _____

Cooler Number/Temperature: 1 / 4.2 °C _____ / _____ °C _____ / _____ °C (Describe)

Thermometer ID: T003

| Requirement Description | Yes | No | N/A | Comments (if any) |
|--|-------------------------------------|----|-------------------------------------|-------------------|
| If samples require cooling, was the temperature between 0°C to ≤ 6°C ⁽¹⁾ ? | <input checked="" type="checkbox"/> | | | |
| Is there ice present (document if blue ice is used) | <input checked="" type="checkbox"/> | | | |
| Are custody seals present on cooler? (if so, document in comments if they are signed and dated, broken or intact) | | | <input checked="" type="checkbox"/> | |
| Are custody seals present on each sample container? (if so, document in comments if they are signed and dated, broken or intact) | | | <input checked="" type="checkbox"/> | |
| Were all samples received intact ⁽¹⁾ ? | <input checked="" type="checkbox"/> | | | |
| Was adequate sample volume provided ⁽¹⁾ ? | <input checked="" type="checkbox"/> | | | |
| Are short holding time analytes or samples with HTs due within 48 hours present ⁽¹⁾ ? | | | <input checked="" type="checkbox"/> | |
| Is a chain-of-custody (COC) present and filled out completely ⁽¹⁾ ? | <input checked="" type="checkbox"/> | | | |
| Does the COC agree with the number and type of sample bottles received ⁽¹⁾ ? | <input checked="" type="checkbox"/> | | | |
| Do the sample IDs on the bottle labels match the COC ⁽¹⁾ ? | <input checked="" type="checkbox"/> | | | |
| Is the COC properly relinquished by the client with date and time recorded ⁽¹⁾ ? | <input checked="" type="checkbox"/> | | | |
| For volatiles in water – is there headspace (> ¼ inch bubble) present? If yes, contact client and note in narrative. | | | <input checked="" type="checkbox"/> | |
| Are samples preserved that require preservation and was it checked ⁽¹⁾ ? (note ID of confirmation instrument used in comments) / (preservation is not confirmed for subcontracted analyses in order to insure sample integrity)/(pH < 2 for samples preserved with HNO ₃ , HCL, H ₂ SO ₄) / (pH > 10 for samples preserved with Na ₂ CO ₃ -NaOH, ZnAc+NaOH) | | | <input checked="" type="checkbox"/> | |
| Additional Comments (if any): | | | | |

⁽¹⁾If NO, then contact the client before proceeding with analysis and note date/time and person contacted as well as the corrective action to in the additional comments (above) and the case narrative.

Reviewed by: jm (Project Manager)

4-9-21
Date/Time Reviewed

Origins Laboratory, Inc.

Jordan A. Merrill

The results in this report apply to the samples analyzed in accordance with the chain of custody document. This analytical report must be reproduced in its entirety.

Eagle Environmental Consulting, Inc.
8000 W 44th Ave
Wheat Ridge CO 80033

Martin C Eckert III
Project Number: 425777561
Project: Noble - Dinner #6-34

TB-SS-01@4'
4/5/2021 11:55:00AM

| Analyte | Result | Min Detection Limit | Reporting Limit | Units | Dilution | Batch | Prepared | Analyzed | Notes |
|---------|--------|---------------------|-----------------|-------|----------|-------|----------|----------|-------|
|---------|--------|---------------------|-----------------|-------|----------|-------|----------|----------|-------|

AAL, Inc.
Y104150-01 (Soil)

Boron (Sorbitol)

| | | | | | | | | |
|-------|-----|--|------|---|--------|------------|------------|--|
| Boron | 0.1 | | mg/L | 1 | [none] | 04/12/2021 | 04/14/2021 | |
|-------|-----|--|------|---|--------|------------|------------|--|

DRO/ORO by EPA 8015D

| | | | | | | | | |
|-----------------------------------|----|------|-------|---|---------|------------|------------|---|
| Diesel (C10-C28) | ND | 25.0 | mg/kg | 1 | B1D0909 | 04/09/2021 | 04/09/2021 | U |
| Residual Range Organics (C28-C40) | ND | 100 | " | " | " | " | " | U |

| | | | | | | | | |
|------------------------|--------|--------|--|--|---|---|---|--|
| Surrogate: o-Terphenyl | 63.9 % | 50-150 | | | " | " | " | |
|------------------------|--------|--------|--|--|---|---|---|--|

GBTEX+TMBs

| | | | | | | | | |
|-----------------------------|----|---------|-------|---|---------|------------|------------|---|
| 1,2,4-Trimethylbenzene | ND | 0.00200 | mg/kg | 1 | B1D0908 | 04/09/2021 | 04/12/2021 | U |
| 1,3,5-Trimethylbenzene | ND | 0.00200 | " | " | " | " | " | U |
| Benzene | ND | 0.00200 | " | " | " | " | " | U |
| Ethylbenzene | ND | 0.00200 | " | " | " | " | " | U |
| Toluene | ND | 0.00200 | " | " | " | " | " | U |
| Gasoline Range Hydrocarbons | ND | 0.200 | " | " | " | " | " | U |
| Xylenes, total | ND | 0.00200 | " | " | " | " | " | U |

| | | | | | | | | |
|----------------------------------|-------|--------|--|--|---|---|---|--|
| Surrogate: 1,2-Dichloroethane-d4 | 102 % | 70-130 | | | " | " | " | |
|----------------------------------|-------|--------|--|--|---|---|---|--|

Origins Laboratory, Inc.



The results in this report apply to the samples analyzed in accordance with the chain of custody document. This analytical report must be reproduced in its entirety.

Eagle Environmental Consulting, Inc.
8000 W 44th Ave
Wheat Ridge CO 80033

Martin C Eckert III
Project Number: 425777561
Project: Noble - Dinner #6-34

TB-SS-01@4'
4/5/2021 11:55:00AM

| Analyte | Result | Min Detection Limit | Reporting Limit | Units | Dilution | Batch | Prepared | Analyzed | Notes |
|---------|--------|---------------------|-----------------|-------|----------|-------|----------|----------|-------|
|---------|--------|---------------------|-----------------|-------|----------|-------|----------|----------|-------|

Origins Laboratory, Inc.
Y104150-01 (Soil)

GBTEX+TMBs

| | | | | | | | | | |
|---------------------------------|--------|--|--------|--|--|-------------|------------|------------|--|
| Surrogate: Toluene-d8 | 95.1 % | | 70-130 | | | B1D09 08 | 04/09/2021 | 04/12/2021 | |
| Surrogate: 4-Bromofluorobenzene | 95.4 % | | 70-130 | | | " | " | " | |

Metals (Saturated Paste Prep)

| | | | | | | | | | |
|-----------|------|--|--|------|---|--------|------------|------------|--|
| Calcium | 2.07 | | | me/L | 1 | [none] | 04/12/2021 | 04/14/2021 | |
| Magnesium | 0.74 | | | " | " | " | " | " | |
| Sodium | 0.34 | | | " | " | " | " | " | |

PAH by EPA 8270D SIM

| | | | | | | | | | |
|-----------------------|----------|----------|---------|-------|---|---------|------------|------------|---|
| 1-Methylnaphthalene | ND | 0.00048 | 0.00067 | mg/Kg | 1 | L547059 | 04/14/2021 | 04/14/2021 | |
| 2-Methylnaphthalene | ND | 0.000542 | 0.00067 | " | " | " | " | " | |
| Acenaphthene | ND | 0.000431 | 0.00067 | " | " | " | " | " | |
| Anthracene | ND | 0.000426 | 0.00067 | " | " | " | " | " | |
| Benzo(a)anthracene | ND | 0.000441 | 0.00067 | " | " | " | " | " | |
| Benzo(a)pyrene | 0.000217 | 0.000133 | 0.00067 | " | " | " | " | " | J |
| Benzo(b)fluoranthene | ND | 0.000138 | 0.00067 | " | " | " | " | " | |
| Benzo(k)fluoranthene | ND | 0.000486 | 0.00067 | " | " | " | " | " | |
| Chrysene | ND | 0.000256 | 0.00067 | " | " | " | " | " | |
| Dibenz(a,h)anthracene | ND | 0.000279 | 0.00067 | " | " | " | " | " | |
| Fluoranthene | ND | 0.000529 | 0.00067 | " | " | " | " | " | |

Origins Laboratory, Inc.



The results in this report apply to the samples analyzed in accordance with the chain of custody document. This analytical report must be reproduced in its entirety.

Eagle Environmental Consulting, Inc.
8000 W 44th Ave
Wheat Ridge CO 80033

Martin C Eckert III
Project Number: 425777561
Project: Noble - Dinner #6-34

TB-SS-01@4'
4/5/2021 11:55:00AM

| Analyte | Result | Min Detection Limit | Reporting Limit | Units | Dilution | Batch | Prepared | Analyzed | Notes |
|---------|--------|---------------------|-----------------|-------|----------|-------|----------|----------|-------|
|---------|--------|---------------------|-----------------|-------|----------|-------|----------|----------|-------|

Waypoint Analytical, Inc.
Y104150-01 (Soil)

PAH by EPA 8270D SIM

| | | | | | | | | |
|------------------------|----|----------|---------|-------|---|---------|------------|------------|
| Fluorene | ND | 0.000501 | 0.00067 | mg/Kg | 1 | L547059 | 04/14/2021 | 04/14/2021 |
| Indeno(1,2,3-cd)pyrene | ND | 0.000344 | 0.00067 | " | " | " | " | " |
| Naphthalene | ND | 0.000467 | 0.00067 | " | " | " | " | " |
| Pyrene | ND | 0.000387 | 0.00067 | " | " | " | " | " |

| | | | | | |
|-----------------------------|--------|--------|---|---|---|
| Surrogate: 2-Fluorobiphenyl | 46.8 % | 33-115 | " | " | " |
| Surrogate: 4-Terphenyl-d14 | 62.2 % | 33-122 | " | " | " |
| Surrogate: Nitrobenzene-d5 | 42 % | 29-110 | " | " | " |

pH in Soil by EPA 9045D

| | | | | | | |
|----|------|----------|---|---------|------------|------------|
| pH | 7.06 | pH Units | 1 | B1D1214 | 04/12/2021 | 04/12/2021 |
|----|------|----------|---|---------|------------|------------|

SAR by 20B Saturated Paste

| | | | | | |
|-----|------|---|--------|------------|------------|
| SAR | 0.29 | 1 | [none] | 04/12/2021 | 04/14/2021 |
|-----|------|---|--------|------------|------------|

Specific Conductance by Modified 9050A

| | | | | | | | |
|---------------------------|-------|---------|----------|---|---------|------------|------------|
| Specific Conductance (EC) | 0.327 | 0.00500 | mmhos/cm | 1 | B1D1215 | 04/12/2021 | 04/12/2021 |
|---------------------------|-------|---------|----------|---|---------|------------|------------|

Origins Laboratory, Inc.



The results in this report apply to the samples analyzed in accordance with the chain of custody document. This analytical report must be reproduced in its entirety.

Eagle Environmental Consulting, Inc.
8000 W 44th Ave
Wheat Ridge CO 80033

Martin C Eckert III
Project Number: 425777561
Project: Noble - Dinner #6-34

TB-SS-06@0-0.5'
4/5/2021 12:22:00PM

| Analyte | Result | Min Detection Limit | Reporting Limit | Units | Dilution | Batch | Prepared | Analyzed | Notes |
|---------|--------|---------------------|-----------------|-------|----------|-------|----------|----------|-------|
|---------|--------|---------------------|-----------------|-------|----------|-------|----------|----------|-------|

AAL, Inc.
Y104150-02 (Soil)

Boron (Sorbitol)

| | | | | | | | | |
|-------|-----|--|------|---|--------|------------|------------|--|
| Boron | 0.3 | | mg/L | 1 | [none] | 04/12/2021 | 04/14/2021 | |
|-------|-----|--|------|---|--------|------------|------------|--|

DRO/ORO by EPA 8015D

| | | | | | | | | |
|-----------------------------------|----|------|-------|---|---------|------------|------------|---|
| Diesel (C10-C28) | ND | 25.0 | mg/kg | 1 | B1D0909 | 04/09/2021 | 04/09/2021 | U |
| Residual Range Organics (C28-C40) | ND | 100 | " | " | " | " | " | U |

| | | | | | | | | |
|------------------------|--------|--------|--|--|---|---|---|--|
| Surrogate: o-Terphenyl | 65.3 % | 50-150 | | | " | " | " | |
|------------------------|--------|--------|--|--|---|---|---|--|

GBTEX+TMBs

| | | | | | | | | |
|-----------------------------|---------|---------|-------|---|---------|------------|------------|---|
| 1,2,4-Trimethylbenzene | ND | 0.00200 | mg/kg | 1 | B1D0908 | 04/09/2021 | 04/12/2021 | U |
| 1,3,5-Trimethylbenzene | ND | 0.00200 | " | " | " | " | " | U |
| Benzene | ND | 0.00200 | " | " | " | " | " | U |
| Ethylbenzene | ND | 0.00200 | " | " | " | " | " | U |
| Toluene | ND | 0.00200 | " | " | " | " | " | U |
| Gasoline Range Hydrocarbons | ND | 0.200 | " | " | " | " | " | U |
| Xylenes, total | 0.00560 | 0.00200 | " | " | " | " | " | |

| | | | | | | | | |
|----------------------------------|--------|--------|--|--|---|---|---|--|
| Surrogate: 1,2-Dichloroethane-d4 | 103 % | 70-130 | | | " | " | " | |
| Surrogate: Toluene-d8 | 95.6 % | 70-130 | | | " | " | " | |

Origins Laboratory, Inc.



The results in this report apply to the samples analyzed in accordance with the chain of custody document. This analytical report must be reproduced in its entirety.

Eagle Environmental Consulting, Inc.
8000 W 44th Ave
Wheat Ridge CO 80033

Martin C Eckert III
Project Number: 425777561
Project: Noble - Dinner #6-34

TB-SS-06@0-0.5'
4/5/2021 12:22:00PM

| Analyte | Result | Min Detection Limit | Reporting Limit | Units | Dilution | Batch | Prepared | Analyzed | Notes |
|---------|--------|---------------------|-----------------|-------|----------|-------|----------|----------|-------|
|---------|--------|---------------------|-----------------|-------|----------|-------|----------|----------|-------|

Origins Laboratory, Inc.
Y104150-02 (Soil)

GBTEX+TMBs

| | | | | | |
|---------------------------------|--------|--------|-------------|------------|------------|
| Surrogate: 4-Bromofluorobenzene | 96.0 % | 70-130 | B1D09 08 | 04/09/2021 | 04/12/2021 |
|---------------------------------|--------|--------|-------------|------------|------------|

Metals (Saturated Paste Prep)

| | | | | | | |
|-----------|------|------|---|--------|------------|------------|
| Calcium | 1.26 | me/L | 1 | [none] | 04/12/2021 | 04/14/2021 |
| Magnesium | 0.48 | " | " | " | " | " |
| Sodium | 0.31 | " | " | " | " | " |

PAH by EPA 8270D SIM

| | | | | | | | | |
|------------------------|----------|----------|---------|-------|---|---------|------------|------------|
| 1-Methylnaphthalene | ND | 0.00048 | 0.00067 | mg/Kg | 1 | L547059 | 04/14/2021 | 04/14/2021 |
| 2-Methylnaphthalene | ND | 0.000542 | 0.00067 | " | " | " | " | " |
| Acenaphthene | ND | 0.000431 | 0.00067 | " | " | " | " | " |
| Anthracene | ND | 0.000426 | 0.00067 | " | " | " | " | " |
| Benzo(a)anthracene | ND | 0.000441 | 0.00067 | " | " | " | " | " |
| Benzo(a)pyrene | 0.000601 | 0.000133 | 0.00067 | " | " | " | " | " J |
| Benzo(b)fluoranthene | 0.000745 | 0.000138 | 0.00067 | " | " | " | " | " |
| Benzo(k)fluoranthene | ND | 0.000486 | 0.00067 | " | " | " | " | " |
| Chrysene | 0.000613 | 0.000256 | 0.00067 | " | " | " | " | " J |
| Dibenz(a,h)anthracene | ND | 0.000279 | 0.00067 | " | " | " | " | " |
| Fluoranthene | 0.00083 | 0.000529 | 0.00067 | " | " | " | " | " |
| Fluorene | ND | 0.000501 | 0.00067 | " | " | " | " | " |
| Indeno(1,2,3-cd)pyrene | 0.00047 | 0.000344 | 0.00067 | " | " | " | " | " J |

Origins Laboratory, Inc.

The results in this report apply to the samples analyzed in accordance with the chain of custody document. This analytical report must be reproduced in its entirety.

Eagle Environmental Consulting, Inc.
8000 W 44th Ave
Wheat Ridge CO 80033

Martin C Eckert III
Project Number: 425777561
Project: Noble - Dinner #6-34

TB-SS-06@0-0.5'
4/5/2021 12:22:00PM

| Analyte | Result | Min Detection Limit | Reporting Limit | Units | Dilution | Batch | Prepared | Analyzed | Notes |
|---------|--------|---------------------|-----------------|-------|----------|-------|----------|----------|-------|
|---------|--------|---------------------|-----------------|-------|----------|-------|----------|----------|-------|

Waypoint Analytical, Inc.
Y104150-02 (Soil)

PAH by EPA 8270D SIM

| | | | | | | | | | |
|-------------|-----------------|-----------------|---------|-------|---|---------|------------|------------|--|
| Naphthalene | ND | 0.000467 | 0.00067 | mg/Kg | 1 | L547059 | 04/14/2021 | 04/14/2021 | |
| Pyrene | 0.000917 | 0.000387 | 0.00067 | " | " | " | " | " | |

| | | | | | | | | | |
|-----------------------------|--------|--|--------|--|--|---|---|---|--|
| Surrogate: 2-Fluorobiphenyl | 55.7 % | | 33-115 | | | " | " | " | |
| Surrogate: 4-Terphenyl-d14 | 69.6 % | | 33-122 | | | " | " | " | |
| Surrogate: Nitrobenzene-d5 | 47.6 % | | 29-110 | | | " | " | " | |

pH in Soil by EPA 9045D

| | | | | | | | | | |
|----|-------------|--|--|----------|---|---------|------------|------------|--|
| pH | 4.34 | | | pH Units | 1 | B1D1214 | 04/12/2021 | 04/12/2021 | |
|----|-------------|--|--|----------|---|---------|------------|------------|--|

SAR by 20B Saturated Paste

| | | | | | | | | | |
|-----|-------------|--|--|--|---|--------|------------|------------|--|
| SAR | 0.33 | | | | 1 | [none] | 04/12/2021 | 04/14/2021 | |
|-----|-------------|--|--|--|---|--------|------------|------------|--|

Specific Conductance by Modified 9050A

| | | | | | | | | | |
|---------------------------|--------------|--|---------|----------|---|---------|------------|------------|--|
| Specific Conductance (EC) | 0.282 | | 0.00500 | mmhos/cm | 1 | B1D1215 | 04/12/2021 | 04/12/2021 | |
|---------------------------|--------------|--|---------|----------|---|---------|------------|------------|--|

Origins Laboratory, Inc.



The results in this report apply to the samples analyzed in accordance with the chain of custody document. This analytical report must be reproduced in its entirety.

Eagle Environmental Consulting, Inc.
8000 W 44th Ave
Wheat Ridge CO 80033

Martin C Eckert III
Project Number: 425777561
Project: Noble - Dinner #6-34

Volatile Organic Compounds by GC/MS SW846 8260D - Quality Control
Origins Laboratory, Inc.

| Analyte | Result | Reporting Limit | Units | Spike Level | Source Result | %REC | %REC Limits | RPD | RPD Limit | Notes |
|--|--------|-----------------|-------|-------------|---|------|-------------|-----|-----------|-------|
| Batch B1D0908 - EPA 5030 (soil) | | | | | | | | | | |
| Blank (B1D0908-BLK1) | | | | | Prepared: 04/09/2021 Analyzed: 04/09/2021 | | | | | |
| 1,2,4-Trimethylbenzene | ND | 0.00200 | mg/kg | | | | | | | U |
| Naphthalene | ND | 0.0100 | " | | | | | | | U |
| 1,3,5-Trimethylbenzene | ND | 0.00200 | " | | | | | | | U |
| Benzene | ND | 0.00200 | " | | | | | | | U |
| Ethylbenzene | ND | 0.00200 | " | | | | | | | U |
| Toluene | ND | 0.00200 | " | | | | | | | U |
| Xylenes, total | ND | 0.00200 | " | | | | | | | U |
| Gasoline Range Hydrocarbons | ND | 0.200 | " | | | | | | | U |
| Surrogate: 1,2-Dichloroethane-d4 | 0.12 | | " | 0.125 | | 99.4 | 70-130 | | | |
| Surrogate: Toluene-d8 | 0.13 | | " | 0.125 | | 100 | 70-130 | | | |
| Surrogate: 4-Bromofluorobenzene | 0.12 | | " | 0.125 | | 97.7 | 70-130 | | | |

Origins Laboratory, Inc.



The results in this report apply to the samples analyzed in accordance with the chain of custody document. This analytical report must be reproduced in its entirety.

Eagle Environmental Consulting, Inc.
8000 W 44th Ave
Wheat Ridge CO 80033

Martin C Eckert III
Project Number: 425777561
Project: Noble - Dinner #6-34

Volatile Organic Compounds by GC/MS SW846 8260D - Quality Control
Origins Laboratory, Inc.

| Analyte | Result | Reporting Limit | Units | Spike Level | Source Result | %REC | %REC Limits | RPD | RPD Limit | Notes |
|--|--------|-----------------|-------|-------------|---|------|-------------|-----|-----------|-------|
| Batch B1D0908 - EPA 5030 (soil) | | | | | | | | | | |
| LCS (B1D0908-BS1) | | | | | Prepared: 04/09/2021 Analyzed: 04/09/2021 | | | | | |
| 1,2,4-Trimethylbenzene | 0.0572 | 0.00200 | mg/kg | 0.0500 | | 114 | 70-130 | | | |
| Naphthalene | 0.0559 | 0.0100 | " | 0.0500 | | 112 | 70-130 | | | |
| 1,3,5-Trimethylbenzene | 0.0570 | 0.00200 | " | 0.0500 | | 114 | 70-130 | | | |
| Benzene | 0.0539 | 0.00200 | " | 0.0500 | | 108 | 70-130 | | | |
| Ethylbenzene | 0.0554 | 0.00200 | " | 0.0500 | | 111 | 70-130 | | | |
| m,p-Xylene | 0.110 | 0.00400 | " | 0.100 | | 110 | 70-130 | | | |
| o-Xylene | 0.0567 | 0.00200 | " | 0.0500 | | 113 | 70-130 | | | |
| Toluene | 0.0531 | 0.00200 | " | 0.0500 | | 106 | 70-130 | | | |
| Surrogate: 1,2-Dichloroethane-d4 | 0.12 | | " | 0.125 | | 97.4 | 70-130 | | | |
| Surrogate: Toluene-d8 | 0.12 | | " | 0.125 | | 98.4 | 70-130 | | | |
| Surrogate: 4-Bromofluorobenzene | 0.13 | | " | 0.125 | | 100 | 70-130 | | | |

Origins Laboratory, Inc.



The results in this report apply to the samples analyzed in accordance with the chain of custody document. This analytical report must be reproduced in its entirety.

Eagle Environmental Consulting, Inc.
8000 W 44th Ave
Wheat Ridge CO 80033

Martin C Eckert III
Project Number: 425777561
Project: Noble - Dinner #6-34

Volatile Organic Compounds by GC/MS SW846 8260D - Quality Control
Origins Laboratory, Inc.

| Analyte | Result | Reporting Limit | Units | Spike Level | Source Result | %REC | %REC Limits | RPD | RPD Limit | Notes |
|--|--------|---------------------------|-------|-------------|---|------|-------------|-----|-----------|-------|
| Batch B1D0908 - EPA 5030 (soil) | | | | | | | | | | |
| Matrix Spike (B1D0908-MS1) | | Source: Y104141-01 | | | Prepared: 04/09/2021 Analyzed: 04/09/2021 | | | | | |
| 1,2,4-Trimethylbenzene | 0.0579 | 0.00200 | mg/kg | 0.0500 | ND | 116 | 70-130 | | | |
| Naphthalene | 0.0607 | 0.0100 | " | 0.0500 | ND | 121 | 70-130 | | | |
| 1,3,5-Trimethylbenzene | 0.0565 | 0.00200 | " | 0.0500 | ND | 113 | 70-130 | | | |
| Benzene | 0.0534 | 0.00200 | " | 0.0500 | ND | 107 | 70-130 | | | |
| Ethylbenzene | 0.0551 | 0.00200 | " | 0.0500 | ND | 110 | 70-130 | | | |
| m,p-Xylene | 0.110 | 0.00400 | " | 0.100 | ND | 110 | 70-130 | | | |
| o-Xylene | 0.0545 | 0.00200 | " | 0.0500 | ND | 109 | 70-130 | | | |
| Toluene | 0.0528 | 0.00200 | " | 0.0500 | ND | 106 | 70-130 | | | |
| Surrogate: 1,2-Dichloroethane-d4 | 0.13 | | " | 0.125 | | 101 | 70-130 | | | |
| Surrogate: Toluene-d8 | 0.12 | | " | 0.125 | | 99.0 | 70-130 | | | |
| Surrogate: 4-Bromofluorobenzene | 0.13 | | " | 0.125 | | 101 | 70-130 | | | |

Origins Laboratory, Inc.



The results in this report apply to the samples analyzed in accordance with the chain of custody document. This analytical report must be reproduced in its entirety.

Eagle Environmental Consulting, Inc.
8000 W 44th Ave
Wheat Ridge CO 80033

Martin C Eckert III
Project Number: 425777561
Project: Noble - Dinner #6-34

Volatile Organic Compounds by GC/MS SW846 8260D - Quality Control
Origins Laboratory, Inc.

| Analyte | Result | Reporting Limit | Units | Spike Level | Source Result | %REC | %REC Limits | RPD | RPD Limit | Notes |
|--|--------|---------------------------|-------|-------------|---|------|-------------|------|-----------|-------|
| Batch B1D0908 - EPA 5030 (soil) | | | | | | | | | | |
| Matrix Spike Dup (B1D0908-MSD1) | | Source: Y104141-01 | | | Prepared: 04/09/2021 Analyzed: 04/09/2021 | | | | | |
| 1,2,4-Trimethylbenzene | 0.0545 | 0.00200 | mg/kg | 0.0500 | ND | 109 | 70-130 | 5.94 | 20 | |
| Naphthalene | 0.0578 | 0.0100 | " | 0.0500 | ND | 116 | 70-130 | 4.86 | 20 | |
| 1,3,5-Trimethylbenzene | 0.0537 | 0.00200 | " | 0.0500 | ND | 107 | 70-130 | 4.97 | 20 | |
| Benzene | 0.0515 | 0.00200 | " | 0.0500 | ND | 103 | 70-130 | 3.59 | 20 | |
| Ethylbenzene | 0.0569 | 0.00200 | " | 0.0500 | ND | 114 | 70-130 | 3.32 | 20 | |
| m,p-Xylene | 0.115 | 0.00400 | " | 0.100 | ND | 115 | 70-130 | 3.99 | 20 | |
| o-Xylene | 0.0582 | 0.00200 | " | 0.0500 | ND | 116 | 70-130 | 6.56 | 20 | |
| Toluene | 0.0509 | 0.00200 | " | 0.0500 | ND | 102 | 70-130 | 3.66 | 20 | |
| Surrogate: 1,2-Dichloroethane-d4 | 0.12 | | " | 0.125 | | 98.4 | 70-130 | | | |
| Surrogate: Toluene-d8 | 0.12 | | " | 0.125 | | 98.7 | 70-130 | | | |
| Surrogate: 4-Bromofluorobenzene | 0.13 | | " | 0.125 | | 104 | 70-130 | | | |

Origins Laboratory, Inc.



The results in this report apply to the samples analyzed in accordance with the chain of custody document. This analytical report must be reproduced in its entirety.

Eagle Environmental Consulting, Inc.
8000 W 44th Ave
Wheat Ridge CO 80033

Martin C Eckert III
Project Number: 425777561
Project: Noble - Dinner #6-34

Volatile Organic Compounds by GC/MS SW846 8260D - Quality Control
Origins Laboratory, Inc.

| Analyte | Result | Reporting Limit | Units | Spike Level | Source Result | %REC | %REC Limits | RPD | RPD Limit | Notes |
|---------|--------|-----------------|-------|-------------|---------------|------|-------------|-----|-----------|-------|
|---------|--------|-----------------|-------|-------------|---------------|------|-------------|-----|-----------|-------|

Batch B1D0909 - EPA 3550B

Blank (B1D0909-BLK1)

Prepared: 04/09/2021 Analyzed: 04/09/2021

| | | | | | | | | | | |
|-----------------------------------|----|------|-------|------|--|------|--------|--|--|---|
| Diesel (C10-C28) | ND | 25.0 | mg/kg | | | | | | | U |
| Residual Range Organics (C28-C40) | ND | 100 | " | | | | | | | U |
| Surrogate: o-Terphenyl | 18 | | " | 25.0 | | 73.8 | 50-150 | | | |

Origins Laboratory, Inc.



The results in this report apply to the samples analyzed in accordance with the chain of custody document. This analytical report must be reproduced in its entirety.

Eagle Environmental Consulting, Inc.
8000 W 44th Ave
Wheat Ridge CO 80033

Martin C Eckert III
Project Number: 425777561
Project: Noble - Dinner #6-34

Extractable Petroleum Hydrocarbons by 8015D - Quality Control
Origins Laboratory, Inc.

| Analyte | Result | Reporting Limit | Units | Spike Level | Source Result | %REC | %REC Limits | RPD | RPD Limit | Notes |
|---------|--------|-----------------|-------|-------------|---------------|------|-------------|-----|-----------|-------|
|---------|--------|-----------------|-------|-------------|---------------|------|-------------|-----|-----------|-------|

Batch B1D0909 - EPA 3550B

LCS (B1D0909-BS1)

Prepared: 04/09/2021 Analyzed: 04/09/2021

| | | | | | | | | | | |
|-----------------------------------|-----|------|-------|------|--|------|--------|--|--|--|
| Diesel (C10-C28) | 928 | 50.0 | mg/kg | 1000 | | 92.8 | 70-130 | | | |
| Residual Range Organics (C28-C40) | 885 | 200 | " | 1000 | | 88.5 | 70-130 | | | |
| Surrogate: o-Terphenyl | 39 | | " | 50.0 | | 78.1 | 50-150 | | | |

Origins Laboratory, Inc.



The results in this report apply to the samples analyzed in accordance with the chain of custody document. This analytical report must be reproduced in its entirety.

Eagle Environmental Consulting, Inc.
8000 W 44th Ave
Wheat Ridge CO 80033

Martin C Eckert III
Project Number: 425777561
Project: Noble - Dinner #6-34

Extractable Petroleum Hydrocarbons by 8015D - Quality Control
Origins Laboratory, Inc.

| Analyte | Result | Reporting Limit | Units | Spike Level | Source Result | %REC | %REC Limits | RPD | RPD Limit | Notes |
|---------|--------|-----------------|-------|-------------|---------------|------|-------------|-----|-----------|-------|
|---------|--------|-----------------|-------|-------------|---------------|------|-------------|-----|-----------|-------|

Batch B1D0909 - EPA 3550B

| Matrix Spike (B1D0909-MS1) | | Source: Y104141-01 | | | Prepared: 04/09/2021 Analyzed: 04/09/2021 | | | | | |
|-----------------------------------|-----|--------------------|-------|------|---|------|--------|--|--|--|
| Diesel (C10-C28) | 930 | 50.0 | mg/kg | 1000 | ND | 93.0 | 70-130 | | | |
| Residual Range Organics (C28-C40) | 879 | 200 | " | 1000 | ND | 87.9 | 70-130 | | | |
| Surrogate: o-Terphenyl | 37 | | " | 50.0 | | 74.7 | 50-150 | | | |

Origins Laboratory, Inc.



The results in this report apply to the samples analyzed in accordance with the chain of custody document. This analytical report must be reproduced in its entirety.

Eagle Environmental Consulting, Inc.
8000 W 44th Ave
Wheat Ridge CO 80033

Martin C Eckert III
Project Number: 425777561
Project: Noble - Dinner #6-34

Extractable Petroleum Hydrocarbons by 8015D - Quality Control
Origins Laboratory, Inc.

| Analyte | Result | Reporting Limit | Units | Spike Level | Source Result | %REC | %REC Limits | RPD | RPD Limit | Notes |
|---------|--------|-----------------|-------|-------------|---------------|------|-------------|-----|-----------|-------|
|---------|--------|-----------------|-------|-------------|---------------|------|-------------|-----|-----------|-------|

Batch B1D0909 - EPA 3550B

| Matrix Spike Dup (B1D0909-MSD1) | | Source: Y104141-01 | | | Prepared: 04/09/2021 Analyzed: 04/09/2021 | | | | | |
|-----------------------------------|-----|--------------------|-------|------|---|------|--------|------|----|--|
| Diesel (C10-C28) | 867 | 50.0 | mg/kg | 1000 | ND | 86.7 | 70-130 | 6.96 | 35 | |
| Residual Range Organics (C28-C40) | 812 | 200 | " | 1000 | ND | 81.2 | 70-130 | 7.83 | 35 | |
| Surrogate: o-Terphenyl | 34 | | " | 50.0 | | 68.4 | 50-150 | | | |

Origins Laboratory, Inc.



The results in this report apply to the samples analyzed in accordance with the chain of custody document. This analytical report must be reproduced in its entirety.

Eagle Environmental Consulting, Inc.
8000 W 44th Ave
Wheat Ridge CO 80033

Martin C Eckert III
Project Number: 425777561
Project: Noble - Dinner #6-34

Extractable Petroleum Hydrocarbons by 8015D - Quality Control

Origins Laboratory, Inc.

| Analyte | Result | Reporting Limit | Units | Spike Level | Source Result | %REC | %REC Limits | RPD | RPD Limit | Notes |
|---------|--------|-----------------|-------|-------------|---------------|------|-------------|-----|-----------|-------|
|---------|--------|-----------------|-------|-------------|---------------|------|-------------|-----|-----------|-------|

Saturated Paste - Quality Control

Origins Laboratory, Inc.

| Analyte | Result | Reporting Limit | Units | Spike Level | Source Result | %REC | %REC Limits | RPD | RPD Limit | Notes |
|---------|--------|-----------------|-------|-------------|---------------|------|-------------|-----|-----------|-------|
|---------|--------|-----------------|-------|-------------|---------------|------|-------------|-----|-----------|-------|

Batch B1D1214 - NO PREP

Duplicate (B1D1214-DUP1)

Source: Y104141-01

Prepared: 04/12/2021 Analyzed: 04/12/2021

| | | | | | | | |
|----|------|--|----------|------|--|------|----|
| pH | 7.23 | | pH Units | 7.15 | | 1.11 | 25 |
|----|------|--|----------|------|--|------|----|

Batch B1D1215 - NO PREP

Blank (B1D1215-BLK1)

Prepared: 04/12/2021 Analyzed: 04/12/2021

| | | | |
|---------------------------|---------|---------|----------|
| Specific Conductance (EC) | 0.00210 | 0.00500 | mmhos/cm |
|---------------------------|---------|---------|----------|

Duplicate (B1D1215-DUP1)

Source: Y104141-01

Prepared: 04/12/2021 Analyzed: 04/12/2021

| | | | | | | | |
|---------------------------|-------|---------|----------|-------|--|------|----|
| Specific Conductance (EC) | 0.243 | 0.00500 | mmhos/cm | 0.237 | | 2.42 | 25 |
|---------------------------|-------|---------|----------|-------|--|------|----|

Origins Laboratory, Inc.



The results in this report apply to the samples analyzed in accordance with the chain of custody document. This analytical report must be reproduced in its entirety.

Eagle Environmental Consulting, Inc.
8000 W 44th Ave
Wheat Ridge CO 80033

Martin C Eckert III
Project Number: 425777561
Project: Noble - Dinner #6-34

PAH by EPA 8270D SIM - Quality Control
Waypoint Analytical, Inc.

| Analyte | Result | Reporting Limit | Units | Spike Level | Source Result | %REC | %REC Limits | RPD | RPD Limit | Notes |
|---------|--------|-----------------|-------|-------------|---------------|------|-------------|-----|-----------|-------|
|---------|--------|-----------------|-------|-------------|---------------|------|-------------|-----|-----------|-------|

Batch L547059 - 3550B

| MSD (L 90686-MSD-L547059) | | Source: Y104150-01 | | | Prepared: 04/14/2021 Analyzed: 04/14/2021 | | | | | |
|-----------------------------|--------|--------------------|-------|-------|---|------|--------|-----|----|--|
| Chrysene | 0.119 | 0.000256 | mg/Kg | 0.165 | <0.000256 | 72.1 | 30-130 | 0.8 | 30 | |
| 1-Methylnaphthalene | 0.1 | 0.00048 | " | 0.165 | <0.000480 | 60.6 | 30-130 | 2.1 | 30 | |
| 2-Methylnaphthalene | 0.101 | 0.000542 | " | 0.165 | <0.000542 | 61.2 | 30-130 | 3.6 | 30 | |
| Acenaphthene | 0.115 | 0.000431 | " | 0.165 | <0.000431 | 69.6 | 30-130 | 2.6 | 30 | |
| Anthracene | 0.119 | 0.000426 | " | 0.165 | <0.000426 | 72.1 | 30-130 | 0.8 | 30 | |
| Benzo(a)anthracene | 0.109 | 0.000441 | " | 0.165 | <0.000441 | 66 | 30-130 | 1.8 | 30 | |
| Pyrene | 0.118 | 0.000387 | " | 0.165 | <0.000387 | 71.5 | 30-130 | 0.8 | 30 | |
| Naphthalene | 0.0939 | 0.000467 | " | 0.165 | <0.000467 | 56.9 | 30-130 | 2.3 | 30 | |
| Indeno(1,2,3-cd)pyrene | 0.0918 | 0.000344 | " | 0.165 | <0.000344 | 55.6 | 30-130 | 7.6 | 30 | |
| Fluorene | 0.117 | 0.000501 | " | 0.165 | <0.000501 | 70.9 | 30-130 | 2.5 | 30 | |
| Fluoranthene | 0.117 | 0.000529 | " | 0.165 | <0.000529 | 70.9 | 30-130 | 2.5 | 30 | |
| Dibenz(a,h)anthracene | 0.0997 | 0.000279 | " | 0.165 | <0.000279 | 60.4 | 30-130 | 7 | 30 | |
| Benzo(b)fluoranthene | 0.0868 | 0.000138 | " | 0.165 | <0.000138 | 52.6 | 30-130 | 6.2 | 30 | |
| Benzo(k)fluoranthene | 0.106 | 0.000486 | " | 0.165 | <0.000486 | 64.2 | 30-130 | 0 | 30 | |
| Benzo(a)pyrene | 0.119 | 0.000133 | " | 0.165 | 0.000217 | 72.1 | 30-130 | 0 | 30 | |
| Surrogate: 2-Fluorobiphenyl | 58.1 | | " | 0.33 | 156 | 58.1 | 33-115 | | | |
| Surrogate: 4-Terphenyl-d14 | 60.9 | | " | 0.33 | 207 | 60.9 | 33-122 | | | |
| Surrogate: Nitrobenzene-d5 | 49.6 | | " | 0.33 | 140 | 49.6 | 29-110 | | | |

| MS (L 90686-MS-L547059) | | Source: Y104150-01 | | | Prepared: 04/14/2021 Analyzed: 04/14/2021 | | | | | |
|-------------------------|--------|--------------------|-------|-------|---|------|--------|--|--|--|
| Benzo(a)pyrene | 0.119 | 0.000133 | mg/Kg | 0.163 | 0.000217 | 73 | 30-130 | | | |
| Chrysene | 0.118 | 0.000256 | " | 0.163 | <0.000256 | 72.3 | 30-130 | | | |
| Pyrene | 0.119 | 0.000387 | " | 0.163 | <0.000387 | 73 | 30-130 | | | |
| Naphthalene | 0.0917 | 0.000467 | " | 0.163 | <0.000467 | 56.2 | 30-130 | | | |
| Indeno(1,2,3-cd)pyrene | 0.0991 | 0.000344 | " | 0.163 | <0.000344 | 60.7 | 30-130 | | | |
| Fluorene | 0.114 | 0.000501 | " | 0.163 | <0.000501 | 69.9 | 30-130 | | | |
| Fluoranthene | 0.12 | 0.000529 | " | 0.163 | <0.000529 | 73.6 | 30-130 | | | |

Origins Laboratory, Inc.

The results in this report apply to the samples analyzed in accordance with the chain of custody document. This analytical report must be reproduced in its entirety.

Eagle Environmental Consulting, Inc.
8000 W 44th Ave
Wheat Ridge CO 80033

Martin C Eckert III
Project Number: 425777561
Project: Noble - Dinner #6-34

PAH by EPA 8270D SIM - Quality Control
Waypoint Analytical, Inc.

| Analyte | Result | Reporting Limit | Units | Spike Level | Source Result | %REC | %REC Limits | RPD | RPD Limit | Notes |
|---------|--------|-----------------|-------|-------------|---------------|------|-------------|-----|-----------|-------|
|---------|--------|-----------------|-------|-------------|---------------|------|-------------|-----|-----------|-------|

Batch L547059 - 3550B

| MS (L 90686-MS-L547059) | | Source: Y104150-01 | | | Prepared: 04/14/2021 Analyzed: 04/14/2021 | | | | | |
|-----------------------------|--------|--------------------|-------|-------|---|------|--------|--|--|--|
| Dibenz(a,h)anthracene | 0.107 | 0.000279 | mg/Kg | 0.163 | <0.000279 | 65.6 | 30-130 | | | |
| Benzo(b)fluoranthene | 0.0924 | 0.000138 | " | 0.163 | <0.000138 | 56.6 | 30-130 | | | |
| Benzo(a)anthracene | 0.111 | 0.000441 | " | 0.163 | <0.000441 | 68 | 30-130 | | | |
| Anthracene | 0.118 | 0.000426 | " | 0.163 | <0.000426 | 72.3 | 30-130 | | | |
| Acenaphthene | 0.112 | 0.000431 | " | 0.163 | <0.000431 | 68.7 | 30-130 | | | |
| 2-Methylnaphthalene | 0.0974 | 0.000542 | " | 0.163 | <0.000542 | 59.7 | 30-130 | | | |
| Benzo(k)fluoranthene | 0.106 | 0.000486 | " | 0.163 | <0.000486 | 65 | 30-130 | | | |
| 1-Methylnaphthalene | 0.0979 | 0.00048 | " | 0.163 | <0.000480 | 60 | 30-130 | | | |
| Surrogate: Nitrobenzene-d5 | 49.2 | | " | 0.327 | 140 | 49.2 | 29-110 | | | |
| Surrogate: 2-Fluorobiphenyl | 57.7 | | " | 0.327 | 156 | 57.7 | 33-115 | | | |
| Surrogate: 4-Terphenyl-d14 | 62.6 | | " | 0.327 | 207 | 62.6 | 33-122 | | | |

LCS (LCS-L547059)

Prepared: 04/14/2021 Analyzed: 04/14/2021

| | | | | | | | | | | |
|------------------------|--------|----------|-------|-------|--|------|--------|--|--|--|
| Dibenz(a,h)anthracene | 0.0972 | 0.000279 | mg/Kg | 0.167 | | 58.2 | 30-130 | | | |
| Fluoranthene | 0.125 | 0.000529 | " | 0.167 | | 74.8 | 30-130 | | | |
| Pyrene | 0.126 | 0.000387 | " | 0.167 | | 75.4 | 30-130 | | | |
| Fluorene | 0.117 | 0.000501 | " | 0.167 | | 70 | 30-130 | | | |
| Indeno(1,2,3-cd)pyrene | 0.0959 | 0.000344 | " | 0.167 | | 57.4 | 30-130 | | | |
| Chrysene | 0.121 | 0.000256 | " | 0.167 | | 72.4 | 30-130 | | | |
| Naphthalene | 0.093 | 0.000467 | " | 0.167 | | 55.6 | 30-130 | | | |
| Benzo(b)fluoranthene | 0.103 | 0.000138 | " | 0.167 | | 61.6 | 30-130 | | | |
| Benzo(a)pyrene | 0.119 | 0.000133 | " | 0.167 | | 71.2 | 30-130 | | | |
| Benzo(a)anthracene | 0.116 | 0.000441 | " | 0.167 | | 69.4 | 30-130 | | | |
| Acenaphthene | 0.114 | 0.000431 | " | 0.167 | | 68.2 | 30-130 | | | |
| 2-Methylnaphthalene | 0.0992 | 0.000542 | " | 0.167 | | 59.4 | 30-130 | | | |
| 1-Methylnaphthalene | 0.0989 | 0.00048 | " | 0.167 | | 59.2 | 30-130 | | | |
| Anthracene | 0.124 | 0.000426 | " | 0.167 | | 74.2 | 30-130 | | | |

Origins Laboratory, Inc.

The results in this report apply to the samples analyzed in accordance with the chain of custody document. This analytical report must be reproduced in its entirety.

Eagle Environmental Consulting, Inc.
8000 W 44th Ave
Wheat Ridge CO 80033

Martin C Eckert III
Project Number: 425777561
Project: Noble - Dinner #6-34

PAH by EPA 8270D SIM - Quality Control
Waypoint Analytical, Inc.

| Analyte | Result | Reporting Limit | Units | Spike Level | Source Result | %REC | %REC Limits | RPD | RPD Limit | Notes |
|---------|--------|-----------------|-------|-------------|---------------|------|-------------|-----|-----------|-------|
|---------|--------|-----------------|-------|-------------|---------------|------|-------------|-----|-----------|-------|

Batch L547059 - 3550B

LCS (LCS-L547059)

Prepared: 04/14/2021 Analyzed: 04/14/2021

| | | | | | | | | | | |
|-----------------------------|-------|----------|-------|-------|--|------|--------|--|--|--|
| Benzo(k)fluoranthene | 0.123 | 0.000486 | mg/Kg | 0.167 | | 73.6 | 30-130 | | | |
| Surrogate: Nitrobenzene-d5 | 53.1 | | " | 0.333 | | 53.1 | 29-110 | | | |
| Surrogate: 4-Terphenyl-d14 | 67.8 | | " | 0.333 | | 67.8 | 33-122 | | | |
| Surrogate: 2-Fluorobiphenyl | 59.4 | | " | 0.333 | | 59.4 | 33-115 | | | |

LRB (LRB-L547059)

Prepared: 04/14/2021 Analyzed: 04/14/2021

| | | | | | | | | | | |
|-----------------------------|------|---------|-------|-------|--|------|--------|--|--|--|
| Chrysene | ND | 0.00067 | mg/Kg | | | | - | | | |
| Dibenz(a,h)anthracene | ND | 0.00067 | " | | | | - | | | |
| Fluoranthene | ND | 0.00067 | " | | | | - | | | |
| Fluorene | ND | 0.00067 | " | | | | - | | | |
| Benzo(k)fluoranthene | ND | 0.00067 | " | | | | - | | | |
| Naphthalene | ND | 0.00067 | " | | | | - | | | |
| Indeno(1,2,3-cd)pyrene | ND | 0.00067 | " | | | | - | | | |
| Benzo(b)fluoranthene | ND | 0.00067 | " | | | | - | | | |
| Benzo(a)pyrene | ND | 0.00067 | " | | | | - | | | |
| Benzo(a)anthracene | ND | 0.00067 | " | | | | - | | | |
| Acenaphthene | ND | 0.00067 | " | | | | - | | | |
| 2-Methylnaphthalene | ND | 0.00067 | " | | | | - | | | |
| 1-Methylnaphthalene | ND | 0.00067 | " | | | | - | | | |
| Pyrene | ND | 0.00067 | " | | | | - | | | |
| Anthracene | ND | 0.00067 | " | | | | - | | | |
| Surrogate: Nitrobenzene-d5 | 53.7 | | " | 0.333 | | 53.7 | 29-110 | | | |
| Surrogate: 4-Terphenyl-d14 | 63.9 | | " | 0.333 | | 63.9 | 33-122 | | | |
| Surrogate: 2-Fluorobiphenyl | 60.9 | | " | 0.333 | | 60.9 | 33-115 | | | |

Origins Laboratory, Inc.



The results in this report apply to the samples analyzed in accordance with the chain of custody document. This analytical report must be reproduced in its entirety.

Eagle Environmental Consulting, Inc.
8000 W 44th Ave
Wheat Ridge CO 80033

Martin C Eckert III
Project Number: 425777561
Project: Noble - Dinner #6-34

Notes and Definitions

U Sample is Non-Detect.

J Estimated Value. Analyte below reported quantitation limit.

ND Analyte NOT DETECTED at or above the reporting limit

RPD Relative Percent Difference

All soil results are reported on a wet weight basis.

Origins Laboratory, Inc.



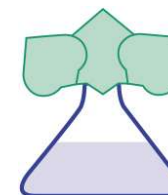
The results in this report apply to the samples analyzed in accordance with the chain of custody document. This analytical report must be reproduced in its entirety.

American Agricultural Laboratory, Inc.

700 West D Street / PO Box 370 / McCook, Nebraska 69001

Office: 308-345-3670 / FAX: 308-345-7880

www.AmAgLab.com



95029

ORIGINS LABORATORY INC

1725 ELK PLACE

DENVER CO 80211

NAME : ORIGINS

DATE RECEIVED: 04/12/2021

DATE REPORTED: 04/14/2021

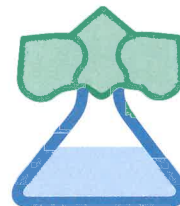
| SOIL TEST RESULTS | | | | | | | | | | | | | | | | | |
|--------------------------------------|--------------------------|--------------------------|---------------------|--|-------------------------------------|----------------------|---|----------------|--------------------|--------------------------|--|---------------|-------------|-----------|-----------------|---|----|
| LAB NUMBER | FIELD IDENTIFICATION | SAMPLE IDENTIFICATION | Depth Inches | pH | | EL | SOLUBLE SALTS mod. SP mmhos/cm | OM LOI % | NITRATE-N (FIA) | | PHOSPHORUS | | | | | | |
| | | | | 1 : 1 Soil | Buffer Woodruff | | | | ppm | lbs/A | P1 ppm | Bicarb ppm | P2 ppm | M2 ppm | M3 ppm | | |
| 3331147 | Y104150 | 01 | 0-8 | | | | | | | | | | | | | | |
| 3331148 | Y104150 | 02 | 0-8 | | | | | | | | | | | | | | |
| | | | | | | | | | | | | | | | | | |
| | | | | | | | | | | | | | | | | | |
| LAB NUMBER | SULFATE-S Ca-P ppm | NH4OAc (Exchangeable) | | | | DTPA | | | | BORON Sorbitol ppm | EST. CATION EXCHANGE CAPACITY (CEC) me/100g | % SATURATION | | | | | |
| | | K ppm | Ca ppm | Mg ppm | Na ppm | Zn ppm | Fe ppm | Mn ppm | Cu ppm | | | BASE | H | Ca | Mg | K | Na |
| 3331147 | | | | | | | | | | 0.1 | | | | | | | |
| 3331148 | | | | | | | | | | 0.3 | | | | | | | |
| | | | | | | | | | | | | | | | | | |
| | | | | | | | | | | | | | | | | | |
| LAB NUMBER | SOLUBLE (SAT. EXT.) | | | SODIUM ADSORPTION RATIO (SAR) | EXCH. SODIUM PERCENT (ESP) | GYPSUM REQ T/A | PARTICLE SIZE ANALYSIS | | | | CHLORIDE | | EXCH. NH4-N | | ALUMINUM ppm | TOTAL N % | |
| | Ca me/L | Mg me/L | Na me/L | | | | SAND % | SILT % | CLAY % | SOIL TEXTURE | ppm | lbs/A | ppm | lbs/A | | | |
| 3331147 | 2.07 | 0.74 | 0.34 | 0.29 | 1 | 0 | | | | | | | | | | | |
| 3331148 | 1.26 | 0.48 | 0.31 | 0.33 | 1 | 0 | | | | | | | | | | | |
| | | | | | | | | | | | | | | | | | |
| | | | | | | | | | | | | | | | | | |
| SUGGESTED FERTILIZER RECOMMENDATIONS | | | | | | | | | | | | | | | | LIME REC 60% ECCE T/A | |
| LAB NUMBER | FIELD IDENTIFICATION | SAMPLE IDENTIFICATION | CROP TO BE GROWN | YIELD GOAL | N | P2O5 | K2O | S | Zn | MgO | Fe | Mn | Cu | B | Cl | | |
| 3331147 | Y104150 | 01 | | | | | | | | | | | | | | | |
| 3331148 | Y104150 | 02 | | | | | | | | | | | | | | | |
| | | | | | | | | | | | | | | | | | |
| | | | | | | | | | | | | | | | | | |
| Approved By: Bob Olsen | | | | | | | | | | | | | | | | Analysis By: American Agricultural Lab | |
| | | | | | | | | | | | | | | | | Recommendations By: American Agricultural Lab | |

American Agricultural Laboratory, Inc.

700 West D St. / P.O. Box 370 / McCook, Nebraska 69001

Office: 308-345-3670 / FAX: 308-345-7880 / www.AmAgLab.com

"Analysis You Can Grow With"®



ORIGINS LABORATORY INC
1725 ELK PLACE
DENVER, CO 80211

DATE RECEIVED: 4/12/2021
DATE REPORTED: 4/14/2021
ACCOUNT NO: 95029
GROWER: ORIGINS

SOIL BORON REPORT

| Lab # | Field ID | Sample ID | B, mg/L |
|---------|----------|-----------|---------|
| 3331147 | Y104150 | 1 | 0.1 |
| 3331148 | Y104150 | 2 | 0.3 |

Pat Olson

Method Used:

Provin, T., and H. Zhang. 2014. DTPA and DTPA-Sorbitol Extraction of Micronutrients.
Soil Test Methods From the Southeastern United States 2014



Your Lab's letterhead here...

Address

City, St. Zip

Phone/Fax

SUBCONTRACT ORDER

Sending Laboratory:

Origins Laboratory, Inc.
1725 West Elk Place
Denver, CO 80211
Phone: 303.433.1322
Fax: 303.265.9645

Project Manager: Noelle Doyle Mathis

Subcontracted Laboratory:

American Agricultural Laboratory, Inc
210 East 1st Street
McCook, NE 69001
Phone: (308) 345-3670
Fax: (308) 345-7880

Work Order: Y104150

| Analysis | Due | Expires | Comments |
|----------|-----|---------|----------|
|----------|-----|---------|----------|

Sample ID: Y104150-01 Soil Sampled: 04/05/2021 11:55

| | | |
|----------------------------|------------|------------------|
| SAR (Saturated Paste Prep) | 04/16/2021 | 04/06/2021 11:55 |
| Boron (DTPA Sorbitol) | 04/16/2021 | 04/06/2021 11:55 |

Containers Supplied:

Sample ID: Y104150-02 Soil Sampled: 04/05/2021 12:22

| | | |
|----------------------------|------------|------------------|
| SAR (Saturated Paste Prep) | 04/16/2021 | 04/06/2021 12:22 |
| Boron (DTPA Sorbitol) | 04/16/2021 | 04/06/2021 12:22 |

Containers Supplied:

APR 12 2021

Released By

Date

4/9/21

Received By

Date

4/12/21



April 27, 2021

Eagle Environmental Consulting, Inc.

Martin C Eckert III

8000 W 44th Ave

Wheat Ridge CO 80033

Project Name - Noble - Dinner #6-34

Project Number - 425777561

Attached are your analytical results for Noble - Dinner #6-34 received by Origins Laboratory, Inc. April 26, 2021. This project is associated with Origins project number Y104457-01.

The analytical results in the following report were analyzed under the guidelines of EPA Methods. These methods are identified as follows; "SW" are defined in SW-846, "EPA" are defined in 40CFR part 136 and "SM" are defined in the most current revision of Standard Methods For the Examination of Water and Wastewater.

The analytical results apply specifically to the samples and analyses specified per the attached Chain of Custody. As such, this report shall not be reproduced except in full, without the written approval of Origin's laboratory.

Unless otherwise noted, the analytical results for all soil samples are reported on a wet weight basis. All analytical analyses were performed under NELAP guidelines unless noted by a data qualifier.

Any holding time exceedances, deviations from the method specifications or deviations from Origins Laboratory's Standard Operating Procedures are outlined in the case narrative.

Thank you for selecting Origins for your analytical needs. Please contact us with any questions concerning this report, or if we can help with anything at all.

Origins Laboratory, Inc.
303.433.1322
o-squad@oelabinc.com



1725 Elk Place, Denver, CO 80211 | Phone: 303.433.1322 | Fax: 303.265.9645

Eagle Environmental Consulting, Inc.

8000 W 44th Ave

Wheat Ridge CO 80033

Martin C Eckert III

Project Number: 425777561

Project: Noble - Dinner #6-34

CROSS REFERENCE REPORT

| Sample ID | Laboratory ID | Matrix | Date Sampled | Date Received |
|------------------|---------------|--------|---------------------|------------------|
| Background-01@3' | Y104457-01 | Soil | April 5, 2021 12:30 | 04/26/2021 15:57 |

Origins Laboratory, Inc.



The results in this report apply to the samples analyzed in accordance with the chain of custody document. This analytical report must be reproduced in its entirety.

Eagle Environmental Consulting, Inc.
8000 W 44th Ave
Wheat Ridge CO 80033

Martin C Eckert III
Project Number: 425777561
Project: Noble - Dinner #6-34

Origins Laboratory

F-012207-01-R1
Effective Date: 01/09/12

Sample Receipt Checklist

Origins Work Order: Y104457

Client: Eagle

Client Project ID: Dinner 6-34

Checklist Completed by: JG

Shipped Via: HD

(UPS, FedEx, Hand Delivered, Pick-up, etc.)

Date/time completed: 4/26/21

Airbill #: N/A

Matrix(s) Received: (Check all that apply): ☒ Soil/Solid

☐ Water

☐ Other:

Cooler Number/Temperature: 1 / 4.6 °C 1 °C 1 °C 1 °C (Describe)

Thermometer ID: T003

| Requirement Description | Yes | No | N/A | Comments (if any) |
|--|-------------------------------------|-------------------------------------|-------------------------------------|-------------------|
| If samples require cooling, was the temperature between 0°C to ≤ 6°C ⁽¹⁾ ? | <input checked="" type="checkbox"/> | <input type="checkbox"/> | <input type="checkbox"/> | |
| Is there ice present (document if blue ice is used) | <input checked="" type="checkbox"/> | <input type="checkbox"/> | <input type="checkbox"/> | |
| Are custody seals present on cooler? (if so, document in comments if they are signed and dated, broken or intact) | <input type="checkbox"/> | <input checked="" type="checkbox"/> | <input type="checkbox"/> | |
| Are custody seals present on each sample container? (if so, document in comments if they are signed and dated, broken or intact) | <input type="checkbox"/> | <input checked="" type="checkbox"/> | <input type="checkbox"/> | |
| Were all samples received intact ⁽¹⁾ ? | <input checked="" type="checkbox"/> | <input type="checkbox"/> | <input type="checkbox"/> | |
| Was adequate sample volume provided ⁽¹⁾ ? | <input checked="" type="checkbox"/> | <input type="checkbox"/> | <input type="checkbox"/> | |
| Are short holding time analytes or samples with HTs due within 48 hours present ⁽¹⁾ ? | <input type="checkbox"/> | <input checked="" type="checkbox"/> | <input type="checkbox"/> | |
| Is a chain-of-custody (COC) present and filled out completely ⁽¹⁾ ? | <input checked="" type="checkbox"/> | <input type="checkbox"/> | <input type="checkbox"/> | |
| Does the COC agree with the number and type of sample bottles received ⁽¹⁾ ? | <input checked="" type="checkbox"/> | <input type="checkbox"/> | <input type="checkbox"/> | |
| Do the sample IDs on the bottle labels match the COC ⁽¹⁾ ? | <input checked="" type="checkbox"/> | <input type="checkbox"/> | <input type="checkbox"/> | |
| Is the COC properly relinquished by the client with date and time recorded ⁽¹⁾ ? | <input checked="" type="checkbox"/> | <input type="checkbox"/> | <input type="checkbox"/> | |
| For volatiles in water – is there headspace (> ¼ inch bubble) present? If yes, contact client and note in narrative. | <input type="checkbox"/> | <input type="checkbox"/> | <input checked="" type="checkbox"/> | |
| Are samples preserved that require preservation and was it checked ⁽¹⁾ ? (note ID of confirmation instrument used in comments) / (preservation is not confirmed for subcontracted analyses in order to insure sample integrity)(pH <2 for samples preserved with HNO ₃ , HCL, H ₂ SO ₄) / (pH >10 for samples preserved with NaAsO ₂ +NaOH, ZnAc+NaOH) | <input type="checkbox"/> | <input type="checkbox"/> | <input checked="" type="checkbox"/> | |
| Additional Comments (if any): | | | | |

⁽¹⁾If NO, then contact the client before proceeding with analysis and note date, time and person contacted as well as the corrective action to in the additional comments (above) and the case narrative.

Reviewed by (Project Manager)

4/26/21
Date/Time Reviewed

Origins Laboratory, Inc.

Jordan A. Merrill

The results in this report apply to the samples analyzed in accordance with the chain of custody document. This analytical report must be reproduced in its entirety.

Eagle Environmental Consulting, Inc.

8000 W 44th Ave

Wheat Ridge CO 80033

Martin C Eckert III

Project Number: 425777561

Project: Noble - Dinner #6-34

Background-01@3'

4/5/2021 12:30:00PM

| Analyte | Result | Reporting Limit | Units | Dilution | Batch | Analyst | Prepared | Analyzed | Notes |
|---------|--------|--------------------|-------|----------|-------|---------|----------|----------|-------|
|---------|--------|--------------------|-------|----------|-------|---------|----------|----------|-------|

Origins Laboratory, Inc.

Y104457-01 (Soil)

pH in Soil by EPA 9045D

| | | | | | | | |
|----|------|----------|---|---------|-----|------------|------------|
| pH | 7.51 | pH Units | 1 | B1D2707 | DJL | 04/27/2021 | 04/27/2021 |
|----|------|----------|---|---------|-----|------------|------------|

Origins Laboratory, Inc.



The results in this report apply to the samples analyzed in accordance with the chain of custody document. This analytical report must be reproduced in its entirety.

Eagle Environmental Consulting, Inc.
8000 W 44th Ave
Wheat Ridge CO 80033

Martin C Eckert III
Project Number: 425777561
Project: Noble - Dinner #6-34

Saturated Paste - Quality Control
Origins Laboratory, Inc.

| Analyte | Result | Reporting Limit | Units | Spike Level | Source Result | %REC | %REC Limits | RPD | RPD Limit | Notes |
|---------|--------|-----------------|-------|-------------|---------------|------|-------------|-----|-----------|-------|
|---------|--------|-----------------|-------|-------------|---------------|------|-------------|-----|-----------|-------|

Batch B1D2707 - NO PREP

Duplicate (B1D2707-DUP1)

Source: Y104428-01

Prepared: 04/27/2021 Analyzed: 04/27/2021

| | | | | | | | | | | |
|----|------|--|----------|--|------|--|--|------|----|--|
| pH | 7.11 | | pH Units | | 7.45 | | | 4.67 | 25 | |
|----|------|--|----------|--|------|--|--|------|----|--|

Origins Laboratory, Inc.



The results in this report apply to the samples analyzed in accordance with the chain of custody document. This analytical report must be reproduced in its entirety.

Eagle Environmental Consulting, Inc.

8000 W 44th Ave

Wheat Ridge CO 80033

Martin C Eckert III

Project Number: 425777561

Project: Noble - Dinner #6-34

Notes and Definitions

ND Analyte NOT DETECTED at or above the reporting limit

RPD Relative Percent Difference

All soil results are reported at a wet weight basis.

Origins Laboratory, Inc.



The results in this report apply to the samples analyzed in accordance with the chain of custody document. This analytical report must be reproduced in its entirety.



September 27, 2023

Eagle Environmental Consulting, LLC

Martin C Eckert III

8000 W 44th Ave

Wheat Ridge CO 80033

Project Name - Noble - Dinner #6-34

Project Number - 425777561

Attached are your analytical results for Noble - Dinner #6-34 received by Origins Laboratory, Inc. September 18, 2023. This project is associated with Origins project number Y309379-01.

The analytical results in the following report were analyzed under the guidelines of EPA Methods. These methods are identified as follows; "SW" are defined in SW-846, "EPA" are defined in 40CFR part 136 and "SM" are defined in the most current revision of Standard Methods For the Examination of Water and Wastewater.

The analytical results apply specifically to the samples and analyses specified per the attached Chain of Custody. As such, this report shall not be reproduced except in full, without the written approval of Origin's laboratory.

Unless otherwise noted, the analytical results for all soil samples are reported on a wet weight basis. All analytical analyses were performed under NELAP guidelines unless noted by a data qualifier.

Any holding time exceedances, deviations from the method specifications or deviations from Origins Laboratory's Standard Operating Procedures are outlined in the case narrative.

Thank you for selecting Origins for your analytical needs. Please contact us with any questions concerning this report, or if we can help with anything at all.

Origins Laboratory, Inc.
303.433.1322
o-squad@oelabinc.com



1725 Elk Place, Denver, CO 80211 | Phone: 303.433.1322 | Fax: 303.265.9645

Eagle Environmental Consulting, LLC
8000 W 44th Ave
Wheat Ridge CO 80033

Martin C Eckert III
Project Number: 425777561
Project: Noble - Dinner #6-34

CROSS REFERENCE REPORT

| Sample ID | Laboratory ID | Matrix | Date Sampled | Date Received |
|--------------------|---------------|--------|--------------------------|------------------|
| CS-TB-SS-06@0-0.5' | Y309379-01 | Soil | September 18, 2023 13:40 | 09/18/2023 17:57 |
| HA-SS-01@0.5-1' | Y309379-02 | Soil | September 18, 2023 13:45 | 09/18/2023 17:57 |
| HA-SS-01@1-2' | Y309379-03 | Soil | September 18, 2023 13:50 | 09/18/2023 17:57 |
| HA-SS-02@0-0.5' | Y309379-04 | Soil | September 18, 2023 14:00 | 09/18/2023 17:57 |
| HA-SS-02@0.5-1' | Y309379-05 | Soil | September 18, 2023 14:05 | 09/18/2023 17:57 |
| HA-SS-03@0-0.5' | Y309379-06 | Soil | September 18, 2023 14:15 | 09/18/2023 17:57 |
| HA-SS-03@0.5-1' | Y309379-07 | Soil | September 18, 2023 14:20 | 09/18/2023 17:57 |
| HA-SS-04@0-0.5' | Y309379-08 | Soil | September 18, 2023 14:30 | 09/18/2023 17:57 |
| HA-SS-04@0.5-1' | Y309379-09 | Soil | September 18, 2023 14:35 | 09/18/2023 17:57 |
| HA-SS-05@0-0.5' | Y309379-10 | Soil | September 18, 2023 14:40 | 09/18/2023 17:57 |
| HA-SS-05@0.5-1' | Y309379-11 | Soil | September 18, 2023 14:45 | 09/18/2023 17:57 |
| HA-SS-06@0-0.5' | Y309379-12 | Soil | September 18, 2023 15:15 | 09/18/2023 17:57 |
| HA-SS-06@0.5-1' | Y309379-13 | Soil | September 18, 2023 15:20 | 09/18/2023 17:57 |
| HA-SS-07@0-0.5' | Y309379-14 | Soil | September 18, 2023 15:25 | 09/18/2023 17:57 |

Origins Laboratory, Inc.



The results in this report apply to the samples analyzed in accordance with the chain of custody document. This analytical report must be reproduced in its entirety.

Eagle Environmental Consulting, LLC
8000 W 44th Ave
Wheat Ridge CO 80033

Martin C Eckert III
Project Number: 425777561
Project: Noble - Dinner #6-34

CROSS REFERENCE REPORT

| Sample ID | Laboratory ID | Matrix | Date Sampled | Date Received |
|-----------------|---------------|--------|--------------------------|------------------|
| HA-SS-07@0.5-1' | Y309379-15 | Soil | September 18, 2023 15:30 | 09/18/2023 17:57 |
| HA-SS-08@0-0.5' | Y309379-16 | Soil | September 18, 2023 15:45 | 09/18/2023 17:57 |
| HA-SS-08@0.5-1' | Y309379-17 | Soil | September 18, 2023 15:50 | 09/18/2023 17:57 |
| HA-SS-09@0-0.5' | Y309379-18 | Soil | September 18, 2023 15:55 | 09/18/2023 17:57 |
| HA-SS-09@0.5-1' | Y309379-19 | Soil | September 18, 2023 16:00 | 09/18/2023 17:57 |

Origins Laboratory, Inc.



The results in this report apply to the samples analyzed in accordance with the chain of custody document. This analytical report must be reproduced in its entirety.

Eagle Environmental Consulting, LLC
8000 W 44th Ave
Wheat Ridge CO 80033

Martin C Eckert III
Project Number: 425777561
Project: Noble - Dinner #6-34

www.originslaboratory.com

ORIGINS
LABORATORY, INC

U309379 page 1 of 2

Client: Eagle Environmental Consulting
Address: 8000 W. 44th Ave.
Wheat Ridge, CO 80033
Telephone Number: 303-433-0479
Email Address: mic@eagle-enviro.com

Project Manager: Martin Eckert III
Project Name: Dinner 6-34
Project Number: BU
Samples Collected By: BU

1725 Elk Place | Phone: 303.433.1322 | Fax: 303.265.9645 | Denver, CO 80211

| Sample ID Description | Date Sampled | Time Sampled | # of Containers | Preservative | | | | Matrix | | | Analysis | | Sample Instructions |
|-----------------------|--------------|--------------|-----------------|--------------|-----|------------------|-------|-------------|------|---------------------------|----------|--|---------------------|
| | | | | Unpreserved | HCl | HNO ₃ | Other | Groundwater | Soil | Air Summng Container # | Other | | |
| CS-18-SS-0600-0.5' | 9-18-23 | 1340 | 2 | X | | | | | X | | | | 1st completed by |
| HA-SS-0100-0.5-1' | | 1345 | | | | | | | | | | | 2nd completed by |
| HA-SS-0100-1-2' | | 1350 | | | | | | | | | | | 3rd completed by |
| HA-SS-0200-0.5' | | 1400 | | | | | | | | | | | |
| HA-SS-0200-0.5-1' | | 1405 | | | | | | | | | | | |
| HA-SS-0300-0.5' | | 1415 | | | | | | | | | | | |
| HA-SS-0300-0.5-1' | | 1420 | | | | | | | | | | | |
| HA-SS-0400-0.5' | | 1430 | | | | | | | | | | | |
| HA-SS-0400-0.5-1' | | 1435 | | | | | | | | | | | |
| HA-SS-0500-0.5' | | 1440 | | | | | | | | | | | |

| Relinquished By: | Date: | Time: | Received By: | Date: | Time: | Turnaround Time: |
|------------------|---------|-------|--------------|---------|-------|--|
| Blake Ulrich | 9-18-23 | 1757 | BU | 9/19/23 | 1757 | Same Day <input type="checkbox"/> 24 Hr <input type="checkbox"/> 48 Hr <input type="checkbox"/> 72 Hr <input checked="" type="checkbox"/> Standard |

Temp Received: 3 Date Results Needed: 3 Noble

Bill to Dan

Origins Laboratory, Inc.

Jefe Pellegrini

The results in this report apply to the samples analyzed in accordance with the chain of custody document. This analytical report must be reproduced in its entirety.

Martin C Eckert III
Project Number: 425777561
Project: Noble - Dinner #6-34

ORIGINS

LABORATORY, INC.

www.originslaboratory.com

43093399

page 2 of 2

Client: Eagle Environmental Consulting

Project Manager: Martin Elbert III

Address: 800 W. 44th Ave.

Project Name: Diner 6-34

Wheat Ridge, CO 80033

Project Number: —

Telephone Number: 303-433-0479

Samples Collected By: BU

Email Address: mce3@eagle-enviro.com

| Sample ID Description | Date Sampled | Time Sampled | # of Containers | Preservative | | | | Matrix | | Analysis | | | | Sample Instructions |
|-----------------------|--------------|--------------|-----------------|--------------|------------------|-------|-------------|--------|-------------|----------|----------|--|--|---------------------|
| | | | | HCl | HNO ₃ | Other | Groundwater | Soil | Air Summa # | Other | PH-9045D | | | |
| HA-S5-05E 0.5-1' | 9-18-23 | 1445 | 2 | X | | | | X | | | | | | PH completed by 1 |
| HA-S5-06E 0-0.5' | | 1515 | | | | | | | | | | | | 2 |
| HA-S5-06E 0.5-1' | | 1520 | | | | | | | | | | | | 3 |
| HA-S5-07E 0-0.5' | | 1525 | | | | | | | | | | | | 4 |
| HA-S5-07E 0.5-1' | | 1530 | | | | | | | | | | | | 5 |
| HA-S5-08E 0-0.5' | | 1545 | | | | | | | | | | | | 6 |
| HA-S5-08E 0.5-1' | | 1550 | | | | | | | | | | | | 7 |
| HA-S5-09E 0-0.5' | | 1555 | | | | | | | | | | | | 8 |
| HA-S5-09E 0.5-1' | | 1600 | | | | | | | | | | | | 9 |
| | | | | | | | | | | | | | | 10 |

| Reinquished By: | Date: | Time: | Received By: | Date: | Time: | Turnaround Time: |
|-----------------|---------|-------|--------------|---------|-------|---|
| Ruthie Ulrich | 9-18-23 | 1757 | [Signature] | 9/19/23 | 1757 | Same Day <input type="checkbox"/> 24 Hr <input type="checkbox"/> 48 Hr <input type="checkbox"/> Standard <input checked="" type="checkbox"/> |

★ Bill to Dan

Temp Received-

3

Date Results Needed - X Mobile

1725 Elk Place

Denver, CO 80211

Phone: 303.433.1322

Fax: 303.265.9645

Origins Laboratory, Inc.

Jeff Pellipini

The results in this report apply to the samples analyzed in accordance with the chain of custody document. This analytical report must be reproduced in its entirety.

Eagle Environmental Consulting, LLC
8000 W 44th Ave
Wheat Ridge CO 80033

Martin C Eckert III
Project Number: 425777561
Project: Noble - Dinner #6-34

Origins Laboratory

F-012207-01-R1
Effective Date: 01/09/12

Sample Receipt Checklist

Origins Work Order: 4309379

Client: Eagle

Client Project ID: Dinner 6-34

Checklist Completed by: CHS

Shipped Via: HD
(UPS, FedEx, Hand Delivered, Pick-up, etc.)

Date/time completed: 9/19/23

Airbill #: N/A

Matrix(s) Received: (Check all that apply): ☒ Soil/Solid

☐ Water ☐ Other:

Cooler Number/Temperature: 113 °C 1 °C 1 °C (Describe)

Thermometer ID: 1004

| Requirement Description | Yes | No | N/A | Comments (if any) |
|---|-------------------------------------|-------------------------------------|-------------------------------------|-------------------|
| If samples require cooling, was the temperature between 0°C to ≤ 6°C ⁽¹⁾ ? | <input checked="" type="checkbox"/> | <input type="checkbox"/> | <input type="checkbox"/> | |
| Is there ice present (document if blue ice is used) | <input checked="" type="checkbox"/> | <input type="checkbox"/> | <input type="checkbox"/> | |
| Are custody seals present on cooler? (if so, document in comments if they are signed and dated, broken or intact) | <input type="checkbox"/> | <input checked="" type="checkbox"/> | <input type="checkbox"/> | |
| Are custody seals present on each sample container? (if so, document in comments if they are signed and dated, broken or intact) | <input type="checkbox"/> | <input checked="" type="checkbox"/> | <input type="checkbox"/> | |
| Were all samples received intact ⁽¹⁾ ? | <input checked="" type="checkbox"/> | <input type="checkbox"/> | <input type="checkbox"/> | |
| Was adequate sample volume provided ⁽¹⁾ ? | <input checked="" type="checkbox"/> | <input type="checkbox"/> | <input type="checkbox"/> | |
| Are short holding time analytes or samples with HTs due within 48 hours present ⁽¹⁾ ? | <input type="checkbox"/> | <input checked="" type="checkbox"/> | <input type="checkbox"/> | |
| Is a chain-of-custody (COC) present and filled out completely ⁽¹⁾ ? | <input checked="" type="checkbox"/> | <input type="checkbox"/> | <input type="checkbox"/> | |
| Does the COC agree with the number and type of sample bottles received ⁽¹⁾ ? | <input checked="" type="checkbox"/> | <input type="checkbox"/> | <input type="checkbox"/> | |
| Do the sample IDs on the bottle labels match the COC ⁽¹⁾ ? | <input checked="" type="checkbox"/> | <input type="checkbox"/> | <input type="checkbox"/> | |
| Is the COC properly relinquished by the client with date and time recorded ⁽¹⁾ ? | <input checked="" type="checkbox"/> | <input type="checkbox"/> | <input type="checkbox"/> | |
| For volatiles in water – is there headspace (> ¼ inch bubble) present? If yes, contact client and note in narrative. | <input type="checkbox"/> | <input type="checkbox"/> | <input checked="" type="checkbox"/> | |
| Are samples preserved that require preservation and was it checked ⁽¹⁾ ? (note ID of confirmation instrument used in comments) / (preservation is not confirmed for subcontracted analyses in order to insure sample integrity)/(pH <2 for samples preserved with HNO ₃ , HCL, H ₂ SO ₄) / (pH >10 for samples preserved with NaAsO ₂ +NaOH, ZnAc+NaOH) | <input type="checkbox"/> | <input type="checkbox"/> | <input checked="" type="checkbox"/> | |
| Additional Comments (if any): | | | | |

⁽¹⁾ If NO, then contact the client before proceeding with analysis and note date/time and person contacted as well as the corrective action to in the additional comments (above) and the case narrative.

Reviewed by (Project Manager)

Date/Time Reviewed 9/19/23

Origins Laboratory, Inc.

Jen Pellegrini

The results in this report apply to the samples analyzed in accordance with the chain of custody document. This analytical report must be reproduced in its entirety.

Eagle Environmental Consulting, LLC
8000 W 44th Ave
Wheat Ridge CO 80033

Martin C Eckert III
Project Number: 425777561
Project: Noble - Dinner #6-34

CS-TB-SS-06@0-0.5'
9/18/2023 1:40:00PM

| Analyte | Result | Reporting | Units | Dilution | Batch | Analyst | Prepared | Analyzed | Notes |
|---------|--------|-----------|-------|----------|-------|---------|----------|----------|-------|
| | | Limit | | | | | | | |

Origins Laboratory, Inc.
Y309379-01 (Soil)

pH in Soil by 9045D

| | | | | | | | |
|----|------|----------|---|---------|-----|------------|------------|
| pH | 7.32 | pH Units | 1 | B312301 | ACN | 09/23/2023 | 09/24/2023 |
|----|------|----------|---|---------|-----|------------|------------|

Origins Laboratory, Inc.



The results in this report apply to the samples analyzed in accordance with the chain of custody document. This analytical report must be reproduced in its entirety.

Eagle Environmental Consulting, LLC
8000 W 44th Ave
Wheat Ridge CO 80033

Martin C Eckert III
Project Number: 425777561
Project: Noble - Dinner #6-34

HA-SS-01@0.5-1'

9/18/2023 1:45:00PM

| Analyte | Result | Reporting | Units | Dilution | Batch | Analyst | Prepared | Analyzed | Notes |
|---------|--------|-----------|-------|----------|-------|---------|----------|----------|-------|
| | | Limit | | | | | | | |

Origins Laboratory, Inc.
Y309379-02 (Soil)

pH in Soil by 9045D

| | | | | | | | |
|----|------|----------|---|---------|-----|------------|------------|
| pH | 7.54 | pH Units | 1 | B312301 | ACN | 09/23/2023 | 09/24/2023 |
|----|------|----------|---|---------|-----|------------|------------|

Origins Laboratory, Inc.



The results in this report apply to the samples analyzed in accordance with the chain of custody document. This analytical report must be reproduced in its entirety.

Eagle Environmental Consulting, LLC
8000 W 44th Ave
Wheat Ridge CO 80033

Martin C Eckert III
Project Number: 425777561
Project: Noble - Dinner #6-34

HA-SS-01@1-2'

9/18/2023 1:50:00PM

| Analyte | Result | Reporting | Units | Dilution | Batch | Analyst | Prepared | Analyzed | Notes |
|---------|--------|-----------|-------|----------|-------|---------|----------|----------|-------|
| | | Limit | | | | | | | |

Origins Laboratory, Inc.
Y309379-03 (Soil)

pH in Soil by 9045D

| | | | | | | | |
|----|------|----------|---|---------|-----|------------|------------|
| pH | 7.22 | pH Units | 1 | B312301 | ACN | 09/23/2023 | 09/24/2023 |
|----|------|----------|---|---------|-----|------------|------------|

Origins Laboratory, Inc.



The results in this report apply to the samples analyzed in accordance with the chain of custody document. This analytical report must be reproduced in its entirety.

Eagle Environmental Consulting, LLC
8000 W 44th Ave
Wheat Ridge CO 80033

Martin C Eckert III
Project Number: 425777561
Project: Noble - Dinner #6-34

HA-SS-02@0-0.5'

9/18/2023 2:00:00PM

| Analyte | Result | Reporting | Units | Dilution | Batch | Analyst | Prepared | Analyzed | Notes |
|---------|--------|-----------|-------|----------|-------|---------|----------|----------|-------|
| | | Limit | | | | | | | |

Origins Laboratory, Inc.
Y309379-04 (Soil)

pH in Soil by 9045D

| | | | | | | | |
|----|------|----------|---|---------|-----|------------|------------|
| pH | 7.92 | pH Units | 1 | B312301 | ACN | 09/23/2023 | 09/24/2023 |
|----|------|----------|---|---------|-----|------------|------------|

Origins Laboratory, Inc.



The results in this report apply to the samples analyzed in accordance with the chain of custody document. This analytical report must be reproduced in its entirety.

Eagle Environmental Consulting, LLC
8000 W 44th Ave
Wheat Ridge CO 80033

Martin C Eckert III
Project Number: 425777561
Project: Noble - Dinner #6-34

HA-SS-02@0.5-1'

9/18/2023 2:05:00PM

| Analyte | Result | Reporting | Units | Dilution | Batch | Analyst | Prepared | Analyzed | Notes |
|---------|--------|-----------|-------|----------|-------|---------|----------|----------|-------|
| | | Limit | | | | | | | |

Origins Laboratory, Inc.
Y309379-05 (Soil)

pH in Soil by 9045D

| | | | | | | | |
|----|------|----------|---|---------|-----|------------|------------|
| pH | 7.67 | pH Units | 1 | B312301 | ACN | 09/23/2023 | 09/24/2023 |
|----|------|----------|---|---------|-----|------------|------------|

Origins Laboratory, Inc.



The results in this report apply to the samples analyzed in accordance with the chain of custody document. This analytical report must be reproduced in its entirety.

Eagle Environmental Consulting, LLC
8000 W 44th Ave
Wheat Ridge CO 80033

Martin C Eckert III
Project Number: 425777561
Project: Noble - Dinner #6-34

HA-SS-03@0-0.5'

9/18/2023 2:15:00PM

| Analyte | Result | Reporting | Units | Dilution | Batch | Analyst | Prepared | Analyzed | Notes |
|---------|--------|-----------|-------|----------|-------|---------|----------|----------|-------|
| | | Limit | | | | | | | |

Origins Laboratory, Inc.
Y309379-06 (Soil)

pH in Soil by 9045D

| | | | | | | | |
|----|------|----------|---|---------|-----|------------|------------|
| pH | 7.40 | pH Units | 1 | B312301 | ACN | 09/23/2023 | 09/24/2023 |
|----|------|----------|---|---------|-----|------------|------------|

Origins Laboratory, Inc.



The results in this report apply to the samples analyzed in accordance with the chain of custody document. This analytical report must be reproduced in its entirety.

Eagle Environmental Consulting, LLC
8000 W 44th Ave
Wheat Ridge CO 80033

Martin C Eckert III
Project Number: 425777561
Project: Noble - Dinner #6-34

HA-SS-03@0.5-1'

9/18/2023 2:20:00PM

| Analyte | Result | Reporting Limit | Units | Dilution | Batch | Analyst | Prepared | Analyzed | Notes |
|---------|--------|--------------------|-------|----------|-------|---------|----------|----------|-------|
|---------|--------|--------------------|-------|----------|-------|---------|----------|----------|-------|

Origins Laboratory, Inc.
Y309379-07 (Soil)

pH in Soil by 9045D

| | | | | | | | |
|----|------|----------|---|---------|-----|------------|------------|
| pH | 7.28 | pH Units | 1 | B312301 | ACN | 09/23/2023 | 09/24/2023 |
|----|------|----------|---|---------|-----|------------|------------|

Origins Laboratory, Inc.



The results in this report apply to the samples analyzed in accordance with the chain of custody document. This analytical report must be reproduced in its entirety.

Eagle Environmental Consulting, LLC
8000 W 44th Ave
Wheat Ridge CO 80033

Martin C Eckert III
Project Number: 425777561
Project: Noble - Dinner #6-34

HA-SS-04@0-0.5'

9/18/2023 2:30:00PM

| Analyte | Result | Reporting | Units | Dilution | Batch | Analyst | Prepared | Analyzed | Notes |
|---------|--------|-----------|-------|----------|-------|---------|----------|----------|-------|
| | | Limit | | | | | | | |

Origins Laboratory, Inc.
Y309379-08 (Soil)

pH in Soil by 9045D

| | | | | | | | |
|----|------|----------|---|---------|-----|------------|------------|
| pH | 7.75 | pH Units | 1 | B312301 | ACN | 09/23/2023 | 09/24/2023 |
|----|------|----------|---|---------|-----|------------|------------|

Origins Laboratory, Inc.



The results in this report apply to the samples analyzed in accordance with the chain of custody document. This analytical report must be reproduced in its entirety.

Eagle Environmental Consulting, LLC
8000 W 44th Ave
Wheat Ridge CO 80033

Martin C Eckert III
Project Number: 425777561
Project: Noble - Dinner #6-34

HA-SS-04@0.5-1'

9/18/2023 2:35:00PM

| Analyte | Result | Reporting | Units | Dilution | Batch | Analyst | Prepared | Analyzed | Notes |
|---------|--------|-----------|-------|----------|-------|---------|----------|----------|-------|
| | | Limit | | | | | | | |

Origins Laboratory, Inc.
Y309379-09 (Soil)

pH in Soil by 9045D

| | | | | | | | |
|----|------|----------|---|---------|-----|------------|------------|
| pH | 7.79 | pH Units | 1 | B312301 | ACN | 09/23/2023 | 09/24/2023 |
|----|------|----------|---|---------|-----|------------|------------|

Origins Laboratory, Inc.



The results in this report apply to the samples analyzed in accordance with the chain of custody document. This analytical report must be reproduced in its entirety.

Eagle Environmental Consulting, LLC
8000 W 44th Ave
Wheat Ridge CO 80033

Martin C Eckert III
Project Number: 425777561
Project: Noble - Dinner #6-34

HA-SS-05@0-0.5'

9/18/2023 2:40:00PM

| Analyte | Result | Reporting | Units | Dilution | Batch | Analyst | Prepared | Analyzed | Notes |
|---------|--------|-----------|-------|----------|-------|---------|----------|----------|-------|
| | | Limit | | | | | | | |

Origins Laboratory, Inc.
Y309379-10 (Soil)

pH in Soil by 9045D

| | | | | | | | |
|----|------|----------|---|---------|-----|------------|------------|
| pH | 7.46 | pH Units | 1 | B312301 | ACN | 09/23/2023 | 09/24/2023 |
|----|------|----------|---|---------|-----|------------|------------|

Origins Laboratory, Inc.



The results in this report apply to the samples analyzed in accordance with the chain of custody document. This analytical report must be reproduced in its entirety.

Eagle Environmental Consulting, LLC
8000 W 44th Ave
Wheat Ridge CO 80033

Martin C Eckert III
Project Number: 425777561
Project: Noble - Dinner #6-34

HA-SS-05@0.5-1'

9/18/2023 2:45:00PM

| Analyte | Result | Reporting | Units | Dilution | Batch | Analyst | Prepared | Analyzed | Notes |
|---------|--------|-----------|-------|----------|-------|---------|----------|----------|-------|
| | | Limit | | | | | | | |

Origins Laboratory, Inc.
Y309379-11 (Soil)

pH in Soil by 9045D

| | | | | | | | |
|----|------|----------|---|---------|-----|------------|------------|
| pH | 7.33 | pH Units | 1 | B312301 | ACN | 09/23/2023 | 09/24/2023 |
|----|------|----------|---|---------|-----|------------|------------|

Origins Laboratory, Inc.



The results in this report apply to the samples analyzed in accordance with the chain of custody document. This analytical report must be reproduced in its entirety.

Eagle Environmental Consulting, LLC
8000 W 44th Ave
Wheat Ridge CO 80033

Martin C Eckert III
Project Number: 425777561
Project: Noble - Dinner #6-34

HA-SS-06@0-0.5'

9/18/2023 3:15:00PM

| Analyte | Result | Reporting | Units | Dilution | Batch | Analyst | Prepared | Analyzed | Notes |
|---------|--------|-----------|-------|----------|-------|---------|----------|----------|-------|
| | | Limit | | | | | | | |

Origins Laboratory, Inc.
Y309379-12 (Soil)

pH in Soil by 9045D

| | | | | | | | |
|----|------|----------|---|---------|-----|------------|------------|
| pH | 7.24 | pH Units | 1 | B312301 | ACN | 09/23/2023 | 09/24/2023 |
|----|------|----------|---|---------|-----|------------|------------|

Origins Laboratory, Inc.



The results in this report apply to the samples analyzed in accordance with the chain of custody document. This analytical report must be reproduced in its entirety.

Eagle Environmental Consulting, LLC
8000 W 44th Ave
Wheat Ridge CO 80033

Martin C Eckert III
Project Number: 425777561
Project: Noble - Dinner #6-34

HA-SS-06@0.5-1'

9/18/2023 3:20:00PM

| Analyte | Result | Reporting | Units | Dilution | Batch | Analyst | Prepared | Analyzed | Notes |
|---------|--------|-----------|-------|----------|-------|---------|----------|----------|-------|
| | | Limit | | | | | | | |

Origins Laboratory, Inc.
Y309379-13 (Soil)

pH in Soil by 9045D

| | | | | | | | |
|----|------|----------|---|---------|-----|------------|------------|
| pH | 7.23 | pH Units | 1 | B312301 | ACN | 09/23/2023 | 09/24/2023 |
|----|------|----------|---|---------|-----|------------|------------|

Origins Laboratory, Inc.



The results in this report apply to the samples analyzed in accordance with the chain of custody document. This analytical report must be reproduced in its entirety.

Eagle Environmental Consulting, LLC

8000 W 44th Ave

Wheat Ridge CO 80033

Martin C Eckert III

Project Number: 425777561

Project: Noble - Dinner #6-34

HA-SS-07@0-0.5'

9/18/2023 3:25:00PM

| Analyte | Result | Reporting | Units | Dilution | Batch | Analyst | Prepared | Analyzed | Notes |
|---------|--------|-----------|-------|----------|-------|---------|----------|----------|-------|
| | | Limit | | | | | | | |

Origins Laboratory, Inc.

Y309379-14 (Soil)

pH in Soil by 9045D

| | | | | | | | |
|----|------|----------|---|---------|-----|------------|------------|
| pH | 6.82 | pH Units | 1 | B312301 | ACN | 09/23/2023 | 09/24/2023 |
|----|------|----------|---|---------|-----|------------|------------|

Origins Laboratory, Inc.



The results in this report apply to the samples analyzed in accordance with the chain of custody document. This analytical report must be reproduced in its entirety.

Eagle Environmental Consulting, LLC
8000 W 44th Ave
Wheat Ridge CO 80033

Martin C Eckert III
Project Number: 425777561
Project: Noble - Dinner #6-34

HA-SS-07@0.5-1'

9/18/2023 3:30:00PM

| Analyte | Result | Reporting | Units | Dilution | Batch | Analyst | Prepared | Analyzed | Notes |
|---------|--------|-----------|-------|----------|-------|---------|----------|----------|-------|
| | | Limit | | | | | | | |

Origins Laboratory, Inc.
Y309379-15 (Soil)

pH in Soil by 9045D

| | | | | | | | |
|----|------|----------|---|---------|-----|------------|------------|
| pH | 6.72 | pH Units | 1 | B312301 | ACN | 09/23/2023 | 09/24/2023 |
|----|------|----------|---|---------|-----|------------|------------|

Origins Laboratory, Inc.



The results in this report apply to the samples analyzed in accordance with the chain of custody document. This analytical report must be reproduced in its entirety.

Eagle Environmental Consulting, LLC
8000 W 44th Ave
Wheat Ridge CO 80033

Martin C Eckert III
Project Number: 425777561
Project: Noble - Dinner #6-34

HA-SS-08@0-0.5'

9/18/2023 3:45:00PM

| Analyte | Result | Reporting | Units | Dilution | Batch | Analyst | Prepared | Analyzed | Notes |
|---------|--------|-----------|-------|----------|-------|---------|----------|----------|-------|
| | | Limit | | | | | | | |

Origins Laboratory, Inc.
Y309379-16 (Soil)

pH in Soil by 9045D

| | | | | | | | |
|----|------|----------|---|---------|-----|------------|------------|
| pH | 7.73 | pH Units | 1 | B312301 | ACN | 09/23/2023 | 09/24/2023 |
|----|------|----------|---|---------|-----|------------|------------|

Origins Laboratory, Inc.



The results in this report apply to the samples analyzed in accordance with the chain of custody document. This analytical report must be reproduced in its entirety.

Eagle Environmental Consulting, LLC
8000 W 44th Ave
Wheat Ridge CO 80033

Martin C Eckert III
Project Number: 425777561
Project: Noble - Dinner #6-34

HA-SS-08@0.5-1'

9/18/2023 3:50:00PM

| Analyte | Result | Reporting | Units | Dilution | Batch | Analyst | Prepared | Analyzed | Notes |
|---------|--------|-----------|-------|----------|-------|---------|----------|----------|-------|
| | | Limit | | | | | | | |

Origins Laboratory, Inc.
Y309379-17 (Soil)

pH in Soil by 9045D

| | | | | | | | |
|----|------|----------|---|---------|-----|------------|------------|
| pH | 7.38 | pH Units | 1 | B312301 | ACN | 09/23/2023 | 09/24/2023 |
|----|------|----------|---|---------|-----|------------|------------|

Origins Laboratory, Inc.



The results in this report apply to the samples analyzed in accordance with the chain of custody document. This analytical report must be reproduced in its entirety.

Eagle Environmental Consulting, LLC
8000 W 44th Ave
Wheat Ridge CO 80033

Martin C Eckert III
Project Number: 425777561
Project: Noble - Dinner #6-34

HA-SS-09@0-0.5'

9/18/2023 3:55:00PM

| Analyte | Result | Reporting | Units | Dilution | Batch | Analyst | Prepared | Analyzed | Notes |
|---------|--------|-----------|-------|----------|-------|---------|----------|----------|-------|
| | | Limit | | | | | | | |

Origins Laboratory, Inc.
Y309379-18 (Soil)

pH in Soil by 9045D

| | | | | | | | |
|----|------|----------|---|---------|-----|------------|------------|
| pH | 7.80 | pH Units | 1 | B312301 | ACN | 09/23/2023 | 09/24/2023 |
|----|------|----------|---|---------|-----|------------|------------|

Origins Laboratory, Inc.



The results in this report apply to the samples analyzed in accordance with the chain of custody document. This analytical report must be reproduced in its entirety.

Eagle Environmental Consulting, LLC
8000 W 44th Ave
Wheat Ridge CO 80033

Martin C Eckert III
Project Number: 425777561
Project: Noble - Dinner #6-34

HA-SS-09@0.5-1'

9/18/2023 4:00:00PM

| Analyte | Result | Reporting | Units | Dilution | Batch | Analyst | Prepared | Analyzed | Notes |
|---------|--------|-----------|-------|----------|-------|---------|----------|----------|-------|
| | | Limit | | | | | | | |

Origins Laboratory, Inc.
Y309379-19 (Soil)

pH in Soil by 9045D

| | | | | | | | |
|----|------|----------|---|---------|-----|------------|------------|
| pH | 7.61 | pH Units | 1 | B312301 | ACN | 09/23/2023 | 09/24/2023 |
|----|------|----------|---|---------|-----|------------|------------|

Origins Laboratory, Inc.



The results in this report apply to the samples analyzed in accordance with the chain of custody document. This analytical report must be reproduced in its entirety.

Eagle Environmental Consulting, LLC
8000 W 44th Ave
Wheat Ridge CO 80033

Martin C Eckert III
Project Number: 425777561
Project: Noble - Dinner #6-34

Saturated Paste - Quality Control Origins Laboratory, Inc.

| Analyte | Result | Reporting Limit | Units | Spike Level | Source Result | %REC | %REC Limits | RPD | RPD Limit | Notes |
|---------|--------|-----------------|-------|-------------|---------------|------|-------------|-----|-----------|-------|
|---------|--------|-----------------|-------|-------------|---------------|------|-------------|-----|-----------|-------|

Batch B3I2301 - Saturated Paste pH/EC

| | | | | | | | | | | |
|--------------------------|------|--------------------|----------|--|---|--|--|------|----|--|
| Duplicate (B3I2301-DUP1) | | Source: Y309379-19 | | | Prepared: 09/23/2023 Analyzed: 09/24/2023 | | | | | |
| pH | 7.47 | | pH Units | | 7.61 | | | 1.86 | 25 | |

Origins Laboratory, Inc.



The results in this report apply to the samples analyzed in accordance with the chain of custody document. This analytical report must be reproduced in its entirety.

Jen Pellegrini For Noelle Doyle Mathis, President

Eagle Environmental Consulting, LLC

8000 W 44th Ave

Wheat Ridge CO 80033

Martin C Eckert III

Project Number: 425777561

Project: Noble - Dinner #6-34

Notes and Definitions

ND Analyte NOT DETECTED at or above the reporting limit

RPD Relative Percent Difference

All soil results are reported at a wet weight basis.

Origins Laboratory, Inc.



The results in this report apply to the samples analyzed in accordance with the chain of custody document. This analytical report must be reproduced in its entirety.



September 27, 2023

Eagle Environmental Consulting, LLC

Martin C Eckert III

8000 W 44th Ave

Wheat Ridge CO 80033

Project Name - Noble - Dinner #6-34

Project Number - 425777561

Attached are your analytical results for Noble - Dinner #6-34 received by Origins Laboratory, Inc. September 18, 2023. This project is associated with Origins project number Y309380-01.

The analytical results in the following report were analyzed under the guidelines of EPA Methods. These methods are identified as follows; "SW" are defined in SW-846, "EPA" are defined in 40CFR part 136 and "SM" are defined in the most current revision of Standard Methods For the Examination of Water and Wastewater.

The analytical results apply specifically to the samples and analyses specified per the attached Chain of Custody. As such, this report shall not be reproduced except in full, without the written approval of Origin's laboratory.

Unless otherwise noted, the analytical results for all soil samples are reported on a wet weight basis. All analytical analyses were performed under NELAP guidelines unless noted by a data qualifier.

Any holding time exceedances, deviations from the method specifications or deviations from Origins Laboratory's Standard Operating Procedures are outlined in the case narrative.

Thank you for selecting Origins for your analytical needs. Please contact us with any questions concerning this report, or if we can help with anything at all.

Origins Laboratory, Inc.
303.433.1322
o-squad@oelabinc.com



1725 Elk Place, Denver, CO 80211 | Phone: 303.433.1322 | Fax: 303.265.9645

Eagle Environmental Consulting, LLC
8000 W 44th Ave
Wheat Ridge CO 80033

Martin C Eckert III
Project Number: 425777561
Project: Noble - Dinner #6-34

CROSS REFERENCE REPORT

| Sample ID | Laboratory ID | Matrix | Date Sampled | Date Received |
|----------------------|---------------|--------|--------------------------|------------------|
| Background-02@0-0.5' | Y309380-01 | Soil | September 18, 2023 11:35 | 09/18/2023 17:57 |
| Background-02@0.5-1' | Y309380-02 | Soil | September 18, 2023 11:40 | 09/18/2023 17:57 |
| Background-02@1-2' | Y309380-03 | Soil | September 18, 2023 11:45 | 09/18/2023 17:57 |
| Background-03@0-0.5' | Y309380-04 | Soil | September 18, 2023 11:50 | 09/18/2023 17:57 |
| Background-03@0.5-1' | Y309380-05 | Soil | September 18, 2023 11:55 | 09/18/2023 17:57 |
| Background-03@1-2' | Y309380-06 | Soil | September 18, 2023 12:00 | 09/18/2023 17:57 |
| Background-04@0-0.5' | Y309380-07 | Soil | September 18, 2023 12:05 | 09/18/2023 17:57 |
| Background-04@0.5-1' | Y309380-08 | Soil | September 18, 2023 12:10 | 09/18/2023 17:57 |
| Background-04@1-2' | Y309380-09 | Soil | September 18, 2023 12:15 | 09/18/2023 17:57 |
| Background-05@0-0.5' | Y309380-10 | Soil | September 18, 2023 12:20 | 09/18/2023 17:57 |
| Background-05@0.5-1' | Y309380-11 | Soil | September 18, 2023 12:25 | 09/18/2023 17:57 |
| Background-05@1-2' | Y309380-12 | Soil | September 18, 2023 12:30 | 09/18/2023 17:57 |
| Background-06@0-0.5' | Y309380-13 | Soil | September 18, 2023 12:35 | 09/18/2023 17:57 |
| Background-06@0.5-1' | Y309380-14 | Soil | September 18, 2023 12:40 | 09/18/2023 17:57 |

Origins Laboratory, Inc.



The results in this report apply to the samples analyzed in accordance with the chain of custody document. This analytical report must be reproduced in its entirety.

Eagle Environmental Consulting, LLC

8000 W 44th Ave

Wheat Ridge CO 80033

Martin C Eckert III

Project Number: 425777561

Project: Noble - Dinner #6-34

CROSS REFERENCE REPORT

| Sample ID | Laboratory ID | Matrix | Date Sampled | Date Received |
|--------------------|---------------|--------|--------------------------|------------------|
| Background-06@1-2' | Y309380-15 | Soil | September 18, 2023 12:45 | 09/18/2023 17:57 |

Origins Laboratory, Inc.



The results in this report apply to the samples analyzed in accordance with the chain of custody document. This analytical report must be reproduced in its entirety.

Jen Pellegrini For Noelle Doyle Mathis, President

Eagle Environmental Consulting, LLC
8000 W 44th Ave
Wheat Ridge CO 80033

Martin C Eckert III
Project Number: 425777561
Project: Noble - Dinner #6-34

www.originslaboratory.com

4309380 page 1 of 2

ORIGINS
LABORATORY, INC

Client: Eagle Environmental Consulting
Address: 8000 W. 44th Ave.
Wheat Ridge, CO 80033
Telephone Number: 303-433-0479
Email Address: mce3@eagle-enviro.com

Project Manager: Martin Eckert III
Project Name: Dinner 6-34
Project Number: —
Samples Collected By: BU

| Sample ID Description | Date Sampled | Time Sampled | # of Containers | Preservative | | | | Matrix | | | Analysis | Sample Instructions |
|-------------------------------|---------------|--------------|-----------------|--------------------------|---------------|------------------|-------|--------------------------|---------------|-------------|----------|---|
| | | | | Unpreserved | HCl | HNO ₃ | Other | Groundwater | Soil | Air Summa # | | |
| Background - 02E0-0.5' | 9-18-23 | 1135 | 2 | X | | | | X | | | | pH completed by |
| Background - 02E0.5-1' | | 1140 | | | | | | | | | | soil tested paste |
| Background - 02E1-2' | | 1145 | | | | | | | | | | prep. |
| Background - 03E0-0.5' | | 1150 | | | | | | | | | | |
| Background - 03E0.5-1' | | 1155 | | | | | | | | | | |
| Background - 03E1-2' | | 1200 | | | | | | | | | | |
| Background - 04E0-0.5' | | 1205 | | | | | | | | | | |
| Background - 04E0.5-1' | | 1210 | | | | | | | | | | |
| Background - 04E1-2' | | 1215 | | | | | | | | | | |
| Background - 05E0-0.5' | | 1220 | | | | | | | | | | |
| Relinquished By: Noble Ulrich | Date: 9-18-23 | Time: 1757 | | Received By: [Signature] | Date: 9-18-23 | Time: 1757 | | Received By: [Signature] | Date: 9-18-23 | Time: 1757 | | Turnaround Time: Same Day <input type="checkbox"/> 24 Hr <input type="checkbox"/> 48 Hr <input type="checkbox"/> 72 Hr <input checked="" type="checkbox"/> Standard |

Date Results Needed: Noble

Temp Received: 3

Bill to Dan

Origins Laboratory, Inc.

Jefe Pellegrini

The results in this report apply to the samples analyzed in accordance with the chain of custody document. This analytical report must be reproduced in its entirety.

Eagle Environmental Consulting, LLC
8000 W 44th Ave
Wheat Ridge CO 80033

Martin C Eckert III
Project Number: 425777561
Project: Noble - Dinner #6-34

Origins Laboratory

F-012207-01-R1
Effective Date: 01/09/12

Sample Receipt Checklist

Origins Work Order: 4309380

Client: Eagle

Client Project ID: Dinner 6-34

Checklist Completed by: EHS

Shipped Via: HP
(UPS, FedEx, Hand Delivered, Pick-up, etc.)

Date/time completed: 9/19/23

Airbill #: N/A

Matrix(s) Received: (Check all that apply): ☒ Soil/Solid

☐ Water ☐ Other: _____

Cooler Number/Temperature: 113 °C 1 °C 1 °C (Describe)

Thermometer ID: 1004

| Requirement Description | Yes | No | N/A | Comments (if any) |
|---|-------------------------------------|-------------------------------------|-------------------------------------|-------------------|
| If samples require cooling, was the temperature between 0°C to ≤ 6°C ⁽¹⁾ ? | <input checked="" type="checkbox"/> | <input type="checkbox"/> | <input type="checkbox"/> | |
| Is there ice present (document if blue ice is used) | <input checked="" type="checkbox"/> | <input type="checkbox"/> | <input type="checkbox"/> | |
| Are custody seals present on cooler? (if so, document in comments if they are signed and dated, broken or intact) | <input type="checkbox"/> | <input checked="" type="checkbox"/> | <input type="checkbox"/> | |
| Are custody seals present on each sample container? (if so, document in comments if they are signed and dated, broken or intact) | <input type="checkbox"/> | <input checked="" type="checkbox"/> | <input type="checkbox"/> | |
| Were all samples received intact ⁽¹⁾ ? | <input checked="" type="checkbox"/> | <input type="checkbox"/> | <input type="checkbox"/> | |
| Was adequate sample volume provided ⁽¹⁾ ? | <input checked="" type="checkbox"/> | <input type="checkbox"/> | <input type="checkbox"/> | |
| Are short holding time analytes or samples with HTs due within 48 hours present ⁽¹⁾ ? | <input type="checkbox"/> | <input checked="" type="checkbox"/> | <input type="checkbox"/> | |
| Is a chain-of-custody (COC) present and filled out completely ⁽¹⁾ ? | <input checked="" type="checkbox"/> | <input type="checkbox"/> | <input type="checkbox"/> | |
| Does the COC agree with the number and type of sample bottles received ⁽¹⁾ ? | <input checked="" type="checkbox"/> | <input type="checkbox"/> | <input type="checkbox"/> | |
| Do the sample IDs on the bottle labels match the COC ⁽¹⁾ ? | <input checked="" type="checkbox"/> | <input type="checkbox"/> | <input type="checkbox"/> | |
| Is the COC properly relinquished by the client with date and time recorded ⁽¹⁾ ? | <input checked="" type="checkbox"/> | <input type="checkbox"/> | <input type="checkbox"/> | |
| For volatiles in water – is there headspace (> ¼ inch bubble) present? If yes, contact client and note in narrative. | <input type="checkbox"/> | <input type="checkbox"/> | <input checked="" type="checkbox"/> | |
| Are samples preserved that require preservation and was it checked ⁽¹⁾ ? (note ID of confirmation instrument used in comments) / (preservation is not confirmed for subcontracted analyses in order to insure sample integrity)/(pH <2 for samples preserved with HNO ₃ , HCL, H ₂ SO ₄) / (pH >10 for samples preserved with NaAsO ₂ +NaOH, ZnAc+NaOH) | <input type="checkbox"/> | <input type="checkbox"/> | <input checked="" type="checkbox"/> | |
| Additional Comments (if any): | | | | |

⁽¹⁾ If NO, then contact the client before proceeding with analysis and note date/time and person contacted as well as the corrective action to in the additional comments (above) and the case narrative.

Reviewed by (Project Manager)

Date/Time Reviewed 9/19/23

Origins Laboratory, Inc.

Jefe Pellegrini

The results in this report apply to the samples analyzed in accordance with the chain of custody document. This analytical report must be reproduced in its entirety.

Eagle Environmental Consulting, LLC
8000 W 44th Ave
Wheat Ridge CO 80033

Martin C Eckert III
Project Number: 425777561
Project: Noble - Dinner #6-34

Background-02@0-0.5'

9/18/2023 11:35:00AM

| Analyte | Result | Reporting | Units | Dilution | Batch | Analyst | Prepared | Analyzed | Notes |
|---------|--------|-----------|-------|----------|-------|---------|----------|----------|-------|
| | | Limit | | | | | | | |

Origins Laboratory, Inc.
Y309380-01 (Soil)

pH in Soil by 9045D

| | | | | | | | |
|----|------|----------|---|---------|-----|------------|------------|
| pH | 7.80 | pH Units | 1 | B312301 | ACN | 09/23/2023 | 09/24/2023 |
|----|------|----------|---|---------|-----|------------|------------|

Origins Laboratory, Inc.



The results in this report apply to the samples analyzed in accordance with the chain of custody document. This analytical report must be reproduced in its entirety.

Eagle Environmental Consulting, LLC
8000 W 44th Ave
Wheat Ridge CO 80033

Martin C Eckert III
Project Number: 425777561
Project: Noble - Dinner #6-34

Background-02@0.5-1'

9/18/2023 11:40:00AM

| Analyte | Result | Reporting | Units | Dilution | Batch | Analyst | Prepared | Analyzed | Notes |
|---------|--------|-----------|-------|----------|-------|---------|----------|----------|-------|
| | | Limit | | | | | | | |

Origins Laboratory, Inc.
Y309380-02 (Soil)

pH in Soil by 9045D

| | | | | | | | |
|----|------|----------|---|---------|-----|------------|------------|
| pH | 7.60 | pH Units | 1 | B312302 | ACN | 09/23/2023 | 09/24/2023 |
|----|------|----------|---|---------|-----|------------|------------|

Origins Laboratory, Inc.



The results in this report apply to the samples analyzed in accordance with the chain of custody document. This analytical report must be reproduced in its entirety.

Eagle Environmental Consulting, LLC
8000 W 44th Ave
Wheat Ridge CO 80033

Martin C Eckert III
Project Number: 425777561
Project: Noble - Dinner #6-34

Background-02@1-2'
9/18/2023 11:45:00AM

| Analyte | Result | Reporting Limit | Units | Dilution | Batch | Analyst | Prepared | Analyzed | Notes |
|---------|--------|--------------------|-------|----------|-------|---------|----------|----------|-------|
|---------|--------|--------------------|-------|----------|-------|---------|----------|----------|-------|

Origins Laboratory, Inc.
Y309380-03 (Soil)

pH in Soil by 9045D

| | | | | | | | |
|----|------|----------|---|---------|-----|------------|------------|
| pH | 7.67 | pH Units | 1 | B312302 | ACN | 09/23/2023 | 09/24/2023 |
|----|------|----------|---|---------|-----|------------|------------|

Origins Laboratory, Inc.



The results in this report apply to the samples analyzed in accordance with the chain of custody document. This analytical report must be reproduced in its entirety.

Eagle Environmental Consulting, LLC
8000 W 44th Ave
Wheat Ridge CO 80033

Martin C Eckert III
Project Number: 425777561
Project: Noble - Dinner #6-34

Background-03@0-0.5'

9/18/2023 11:50:00AM

| Analyte | Result | Reporting | Units | Dilution | Batch | Analyst | Prepared | Analyzed | Notes |
|---------|--------|-----------|-------|----------|-------|---------|----------|----------|-------|
| | | Limit | | | | | | | |

Origins Laboratory, Inc.
Y309380-04 (Soil)

pH in Soil by 9045D

| | | | | | | | |
|----|------|----------|---|---------|-----|------------|------------|
| pH | 7.78 | pH Units | 1 | B312302 | ACN | 09/23/2023 | 09/24/2023 |
|----|------|----------|---|---------|-----|------------|------------|

Origins Laboratory, Inc.



The results in this report apply to the samples analyzed in accordance with the chain of custody document. This analytical report must be reproduced in its entirety.

Eagle Environmental Consulting, LLC
8000 W 44th Ave
Wheat Ridge CO 80033

Martin C Eckert III
Project Number: 425777561
Project: Noble - Dinner #6-34

Background-03@0.5-1'

9/18/2023 11:55:00AM

| Analyte | Result | Reporting | Units | Dilution | Batch | Analyst | Prepared | Analyzed | Notes |
|---------|--------|-----------|-------|----------|-------|---------|----------|----------|-------|
| | | Limit | | | | | | | |

Origins Laboratory, Inc.
Y309380-05 (Soil)

pH in Soil by 9045D

| | | | | | | | |
|----|------|----------|---|---------|-----|------------|------------|
| pH | 7.74 | pH Units | 1 | B312302 | ACN | 09/23/2023 | 09/24/2023 |
|----|------|----------|---|---------|-----|------------|------------|

Origins Laboratory, Inc.



The results in this report apply to the samples analyzed in accordance with the chain of custody document. This analytical report must be reproduced in its entirety.

Eagle Environmental Consulting, LLC
8000 W 44th Ave
Wheat Ridge CO 80033

Martin C Eckert III
Project Number: 425777561
Project: Noble - Dinner #6-34

Background-03@1-2'
9/18/2023 12:00:00PM

| Analyte | Result | Reporting | Units | Dilution | Batch | Analyst | Prepared | Analyzed | Notes |
|---------|--------|-----------|-------|----------|-------|---------|----------|----------|-------|
| | | Limit | | | | | | | |

Origins Laboratory, Inc.
Y309380-06 (Soil)

pH in Soil by 9045D

| | | | | | | | |
|----|------|----------|---|---------|-----|------------|------------|
| pH | 7.75 | pH Units | 1 | B312302 | ACN | 09/23/2023 | 09/24/2023 |
|----|------|----------|---|---------|-----|------------|------------|

Origins Laboratory, Inc.



The results in this report apply to the samples analyzed in accordance with the chain of custody document. This analytical report must be reproduced in its entirety.

Eagle Environmental Consulting, LLC
8000 W 44th Ave
Wheat Ridge CO 80033

Martin C Eckert III
Project Number: 425777561
Project: Noble - Dinner #6-34

Background-04@0-0.5'

9/18/2023 12:05:00PM

| Analyte | Result | Reporting | Units | Dilution | Batch | Analyst | Prepared | Analyzed | Notes |
|---------|--------|-----------|-------|----------|-------|---------|----------|----------|-------|
| | | Limit | | | | | | | |

Origins Laboratory, Inc.
Y309380-07 (Soil)

pH in Soil by 9045D

| | | | | | | | |
|----|------|----------|---|---------|-----|------------|------------|
| pH | 7.82 | pH Units | 1 | B312302 | ACN | 09/23/2023 | 09/24/2023 |
|----|------|----------|---|---------|-----|------------|------------|

Origins Laboratory, Inc.



The results in this report apply to the samples analyzed in accordance with the chain of custody document. This analytical report must be reproduced in its entirety.

Eagle Environmental Consulting, LLC
8000 W 44th Ave
Wheat Ridge CO 80033

Martin C Eckert III
Project Number: 425777561
Project: Noble - Dinner #6-34

Background-04@0.5-1'

9/18/2023 12:10:00PM

| Analyte | Result | Reporting | Units | Dilution | Batch | Analyst | Prepared | Analyzed | Notes |
|---------|--------|-----------|-------|----------|-------|---------|----------|----------|-------|
| | | Limit | | | | | | | |

Origins Laboratory, Inc.
Y309380-08 (Soil)

pH in Soil by 9045D

| | | | | | | | |
|----|------|----------|---|---------|-----|------------|------------|
| pH | 7.75 | pH Units | 1 | B312302 | ACN | 09/23/2023 | 09/24/2023 |
|----|------|----------|---|---------|-----|------------|------------|

Origins Laboratory, Inc.



The results in this report apply to the samples analyzed in accordance with the chain of custody document. This analytical report must be reproduced in its entirety.

Eagle Environmental Consulting, LLC
8000 W 44th Ave
Wheat Ridge CO 80033

Martin C Eckert III
Project Number: 425777561
Project: Noble - Dinner #6-34

Background-04@1-2'
9/18/2023 12:15:00PM

| Analyte | Result | Reporting Limit | Units | Dilution | Batch | Analyst | Prepared | Analyzed | Notes |
|---------|--------|--------------------|-------|----------|-------|---------|----------|----------|-------|
|---------|--------|--------------------|-------|----------|-------|---------|----------|----------|-------|

Origins Laboratory, Inc.
Y309380-09 (Soil)

pH in Soil by 9045D

| | | | | | | | | | |
|----|------|--|----------|---|---------|-----|------------|------------|--|
| pH | 7.86 | | pH Units | 1 | B312302 | ACN | 09/23/2023 | 09/24/2023 | |
|----|------|--|----------|---|---------|-----|------------|------------|--|

Origins Laboratory, Inc.



The results in this report apply to the samples analyzed in accordance with the chain of custody document. This analytical report must be reproduced in its entirety.

Eagle Environmental Consulting, LLC
8000 W 44th Ave
Wheat Ridge CO 80033

Martin C Eckert III
Project Number: 425777561
Project: Noble - Dinner #6-34

Background-05@0-0.5'

9/18/2023 12:20:00PM

| Analyte | Result | Reporting | Units | Dilution | Batch | Analyst | Prepared | Analyzed | Notes |
|---------|--------|-----------|-------|----------|-------|---------|----------|----------|-------|
| | | Limit | | | | | | | |

Origins Laboratory, Inc.
Y309380-10 (Soil)

pH in Soil by 9045D

| | | | | | | | |
|----|------|----------|---|---------|-----|------------|------------|
| pH | 6.97 | pH Units | 1 | B312302 | ACN | 09/23/2023 | 09/24/2023 |
|----|------|----------|---|---------|-----|------------|------------|

Origins Laboratory, Inc.



The results in this report apply to the samples analyzed in accordance with the chain of custody document. This analytical report must be reproduced in its entirety.

Eagle Environmental Consulting, LLC
8000 W 44th Ave
Wheat Ridge CO 80033

Martin C Eckert III
Project Number: 425777561
Project: Noble - Dinner #6-34

Background-05@0.5-1'

9/18/2023 12:25:00PM

| Analyte | Result | Reporting | Units | Dilution | Batch | Analyst | Prepared | Analyzed | Notes |
|---------|--------|-----------|-------|----------|-------|---------|----------|----------|-------|
| | | Limit | | | | | | | |

Origins Laboratory, Inc.
Y309380-11 (Soil)

pH in Soil by 9045D

| | | | | | | | |
|----|------|----------|---|---------|-----|------------|------------|
| pH | 7.41 | pH Units | 1 | B312302 | ACN | 09/23/2023 | 09/24/2023 |
|----|------|----------|---|---------|-----|------------|------------|

Origins Laboratory, Inc.



The results in this report apply to the samples analyzed in accordance with the chain of custody document. This analytical report must be reproduced in its entirety.

Eagle Environmental Consulting, LLC
8000 W 44th Ave
Wheat Ridge CO 80033

Martin C Eckert III
Project Number: 425777561
Project: Noble - Dinner #6-34

Background-05@1-2'
9/18/2023 12:30:00PM

| Analyte | Result | Reporting Limit | Units | Dilution | Batch | Analyst | Prepared | Analyzed | Notes |
|---------|--------|--------------------|-------|----------|-------|---------|----------|----------|-------|
|---------|--------|--------------------|-------|----------|-------|---------|----------|----------|-------|

Origins Laboratory, Inc.
Y309380-12 (Soil)

pH in Soil by 9045D

| | | | | | | | |
|----|------|----------|---|---------|-----|------------|------------|
| pH | 7.64 | pH Units | 1 | B312302 | ACN | 09/23/2023 | 09/24/2023 |
|----|------|----------|---|---------|-----|------------|------------|

Origins Laboratory, Inc.



The results in this report apply to the samples analyzed in accordance with the chain of custody document. This analytical report must be reproduced in its entirety.

Eagle Environmental Consulting, LLC
8000 W 44th Ave
Wheat Ridge CO 80033

Martin C Eckert III
Project Number: 425777561
Project: Noble - Dinner #6-34

Background-06@0-0.5'

9/18/2023 12:35:00PM

| Analyte | Result | Reporting | Units | Dilution | Batch | Analyst | Prepared | Analyzed | Notes |
|---------|--------|-----------|-------|----------|-------|---------|----------|----------|-------|
| | | Limit | | | | | | | |

Origins Laboratory, Inc.
Y309380-13 (Soil)

pH in Soil by 9045D

| | | | | | | | |
|----|------|----------|---|---------|-----|------------|------------|
| pH | 6.59 | pH Units | 1 | B312302 | ACN | 09/23/2023 | 09/24/2023 |
|----|------|----------|---|---------|-----|------------|------------|

Origins Laboratory, Inc.



The results in this report apply to the samples analyzed in accordance with the chain of custody document. This analytical report must be reproduced in its entirety.

Eagle Environmental Consulting, LLC
8000 W 44th Ave
Wheat Ridge CO 80033

Martin C Eckert III
Project Number: 425777561
Project: Noble - Dinner #6-34

Background-06@0.5-1'

9/18/2023 12:40:00PM

| Analyte | Result | Reporting | Units | Dilution | Batch | Analyst | Prepared | Analyzed | Notes |
|---------|--------|-----------|-------|----------|-------|---------|----------|----------|-------|
| | | Limit | | | | | | | |

Origins Laboratory, Inc.
Y309380-14 (Soil)

pH in Soil by 9045D

| | | | | | | | |
|----|------|----------|---|---------|-----|------------|------------|
| pH | 7.24 | pH Units | 1 | B312302 | ACN | 09/23/2023 | 09/24/2023 |
|----|------|----------|---|---------|-----|------------|------------|

Origins Laboratory, Inc.



The results in this report apply to the samples analyzed in accordance with the chain of custody document. This analytical report must be reproduced in its entirety.

Eagle Environmental Consulting, LLC
8000 W 44th Ave
Wheat Ridge CO 80033

Martin C Eckert III
Project Number: 425777561
Project: Noble - Dinner #6-34

Background-06@1-2'
9/18/2023 12:45:00PM

| Analyte | Result | Reporting Limit | Units | Dilution | Batch | Analyst | Prepared | Analyzed | Notes |
|---------|--------|--------------------|-------|----------|-------|---------|----------|----------|-------|
|---------|--------|--------------------|-------|----------|-------|---------|----------|----------|-------|

Origins Laboratory, Inc.
Y309380-15 (Soil)

pH in Soil by 9045D

| | | | | | | | | | |
|----|------|--|----------|---|---------|-----|------------|------------|--|
| pH | 7.64 | | pH Units | 1 | B312302 | ACN | 09/23/2023 | 09/24/2023 | |
|----|------|--|----------|---|---------|-----|------------|------------|--|

Origins Laboratory, Inc.



The results in this report apply to the samples analyzed in accordance with the chain of custody document. This analytical report must be reproduced in its entirety.

Eagle Environmental Consulting, LLC
8000 W 44th Ave
Wheat Ridge CO 80033

Martin C Eckert III
Project Number: 425777561
Project: Noble - Dinner #6-34

Saturated Paste - Quality Control Origins Laboratory, Inc.

| Analyte | Result | Reporting Limit | Units | Spike Level | Source Result | %REC | %REC Limits | RPD | RPD Limit | Notes |
|--|--------|---------------------------|----------|-------------|---|------|-------------|------|-----------|-------|
| Batch B3I2301 - Saturated Paste pH/EC | | | | | | | | | | |
| Duplicate (B3I2301-DUP1) | | Source: Y309379-19 | | | Prepared: 09/23/2023 Analyzed: 09/24/2023 | | | | | |
| pH | 7.47 | | pH Units | | 7.61 | | | 1.86 | 25 | |
| Batch B3I2302 - Saturated Paste pH/EC | | | | | | | | | | |
| Duplicate (B3I2302-DUP1) | | Source: Y309380-02 | | | Prepared: 09/23/2023 Analyzed: 09/24/2023 | | | | | |
| pH | 7.71 | | pH Units | | 7.60 | | | 1.44 | 25 | |

Origins Laboratory, Inc.



The results in this report apply to the samples analyzed in accordance with the chain of custody document. This analytical report must be reproduced in its entirety.

Eagle Environmental Consulting, LLC

8000 W 44th Ave

Wheat Ridge CO 80033

Martin C Eckert III

Project Number: 425777561

Project: Noble - Dinner #6-34

Notes and Definitions

ND Analyte NOT DETECTED at or above the reporting limit

RPD Relative Percent Difference

All soil results are reported at a wet weight basis.

Origins Laboratory, Inc.



The results in this report apply to the samples analyzed in accordance with the chain of custody document. This analytical report must be reproduced in its entirety.