

Plat #1

RECEIVED

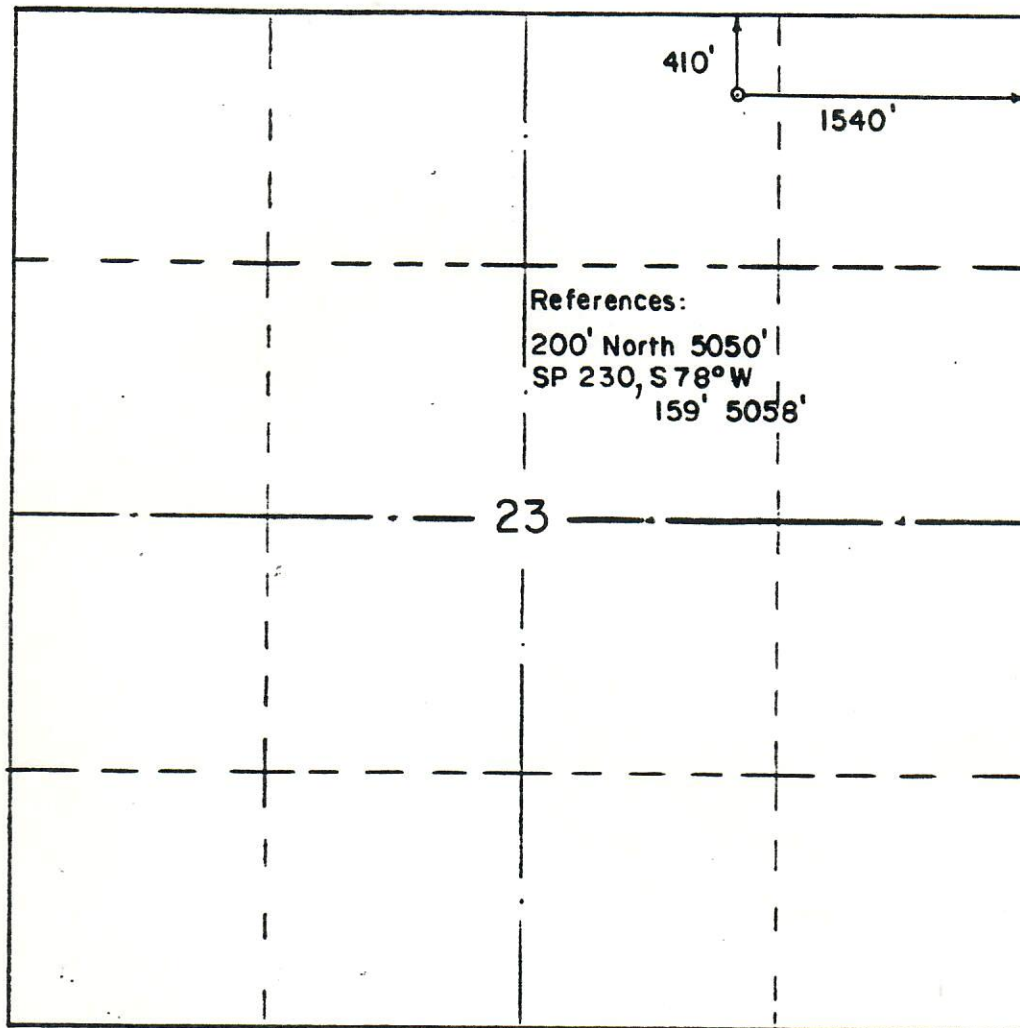
SEP 18 1984

COLO. OIL & GAS CONS. COM.



00563621

WELL LOCATION AND ACREAGE DEDICATION PLAT



1"=1000'

Operator Wintershall O & G Corporation		Well name 23-31 Roadrunner	
Section 23	Township 33 1/2 North	Range 20 West	Meridian NMPM
Footages 410' FNL & 1540' FEL		County/State Montezuma, CO	Elevation 5060'
Formation		Dedicated Acreage	Requested by Lisa Green
<p>The above plat is true and correct to the best of my knowledge and belief.</p> <p>6 Sept. 84</p> <p style="text-align: center;"> </p>			