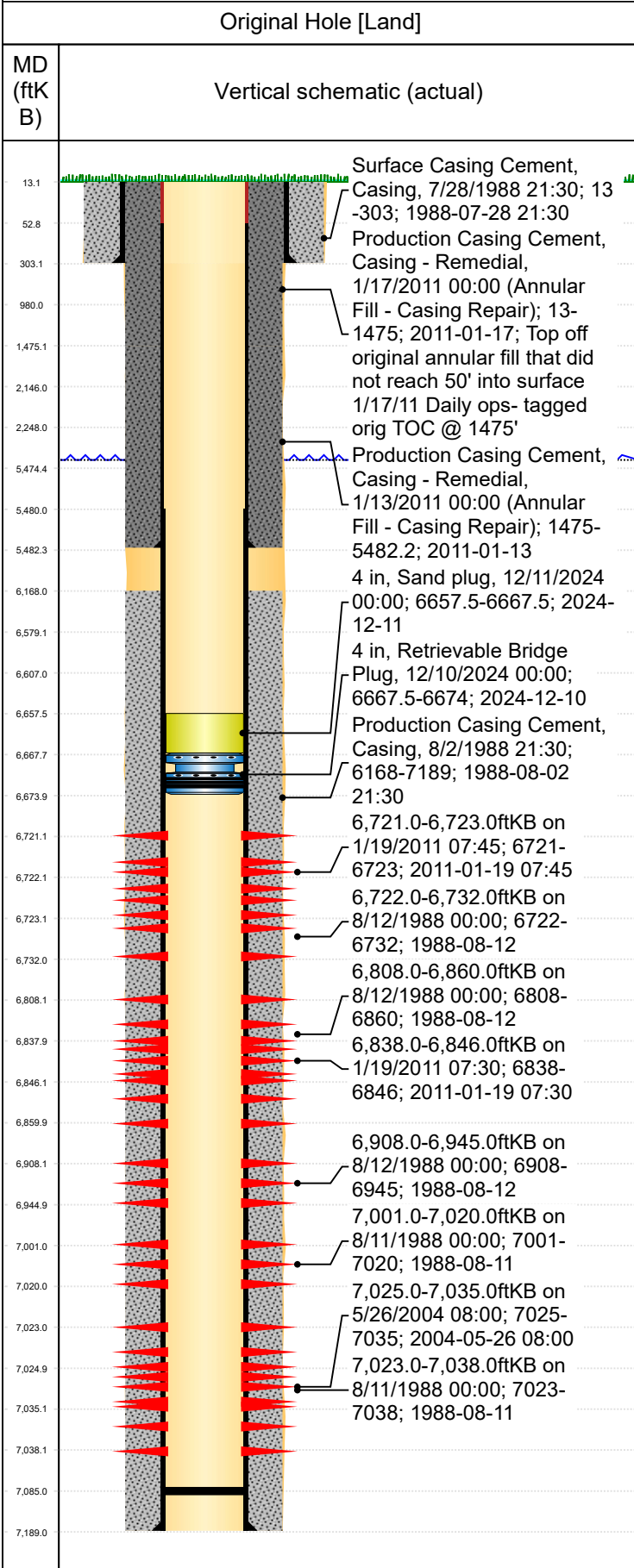




# P&A Wellbore For State

Well Name: State Lease 81 23-16



Well Header										
Surface UWI 0512313979			Business Unit Rockies			Gov Auth Dist Evans		Prod Tree Loc Land		
Orig. KB to Gnd (ft) 13.00		Original Spud Date 7/28/1988		Abandon Date		Well Sub-Status TA		High...		N
Comment No Forms 5A for Codell and Niobrara refracs submitted to state. Sundry notice for csg repair but no Form 5 submitted to state. ??? Well on LPDCE Formation Tops spreadsheet but no depths entered as of 10/28/24. Entered formation depths from 1988 Form 5. JH 10/28/24										
Surface Location (Congressional)										
Qtr 3 NE	Qtr 4 SW	Section 16	Twnshp 6	Twnshp...	Range 64	Rng E/...	Latitude (°) 40.48414	Longitude (°) -104.55678		
Wellbore Sections										
Section Des		Hole Size (in)		Top Depth (ftKB)		Btm Depth (ftKB)				
Surface		12 1/4		13.0		303.0				
Production		7 7/8		303.0		7,189.0				
Casing Strings										
Csg Des		Run Date		OD (in)		Wt/Len (lb/ft)		Grade		Set Depth (MD) (ftKB)
Surface		7/28/1988		8 5/8		24.00				303
Production Casing		1/8/2011		4 1/2						5482.2
Production		8/2/1988		4 1/2		11.60				7189
Cement										
Des			Start Date		Top (ftKB)		Btm (ftKB)			
Surface Casing Cement			7/28/1988		13.0		303.0			
Production Casing Cement			8/2/1988		6,168.0		7,189.0			
Annular Fill - Casing Repair			1/13/2011		1,475.0		5,482.2			
Annular Fill - Casing Repair			1/17/2011		13.0		1,475.0			
Zone Statuses										
Zone Name		Status Date	Status	Fluid Type	Job			Prod Method		
Niobrara		12/11/2024	Closed		Frac Hit Prevention, 12/6/2024 00:00					
Codell		12/11/2024	Closed		Frac Hit Prevention, 12/6/2024 00:00					
Perforation Data										
Linked Zone		Explosive Type	Entered Shot Total	Top (ftKB)		Btm (ftKB)		Date		
Niobrara_A, Original Hole			4	6,721.0		6,723.0		1/19/2011		
Niobrara_A, Original Hole			3	6,722.0		6,732.0		8/12/1988		
Niobrara_B, Original Hole			8	6,808.0		6,860.0		8/12/1988		
Niobrara_B, Original Hole			16	6,838.0		6,846.0		1/19/2011		
Niobrara_C, Original Hole			6	6,908.0		6,945.0		8/12/1988		
Ft. Hayes, Original Hole			7	7,001.0		7,020.0		8/11/1988		
Codell, Original Hole			30	7,023.0		7,038.0		8/11/1988		
Codell, Original Hole			30	7,025.0		7,035.0		5/26/2004		
Stim/Frac Stage										
Zone			Start Date		Top (ftKB)		Btm (ftKB)			
Codell, Original Hole			8/12/1988							
Codell, Original Hole			5/27/2004							
Niobrara, Original Hole			1/22/2011							
Niobrara, Original Hole			8/12/1988							
Other In Hole										
Run Date		Des			Make		OD (in)	Top (ftKB)	Btm (ftKB)	
12/10/2024		Retrievable Bridge Plug					4	6,667.5	6,674.0	
12/11/2024		Sand plug					4	6,657.5	6,667.5	
Logs										
Date		Type				Depth Top (MD) (ftKB)		Btm (ftKB)		
8/1/1988						3,600		7,171.0		
8/1/1988		Dual Induction (DIT)				303		7,188.0		
8/10/1988		Cement Bond Log				6,000		7,066.0		
12/30/2010		CBL/VDL/GR/CCL				13		7,076.0		
12/30/2010		CBL/VDL/GR/CCL				13		7,076.0		
Wellbore Plug Back Total Depths										
Date		Type		Com				PBTD (ftKB)		
1/27/2011		Cast Iron Bridge Plug		Daily Ops comments: drilled out CIBP, chased to 7085'				7,085		