

## Inspection Photos

Location: LARAMIE ENERGY LLC Horseshoe Canyon/2-21 Pad

Location ID: 312617

Date: 12/11/2024



Photo # 0877 Entrance to location

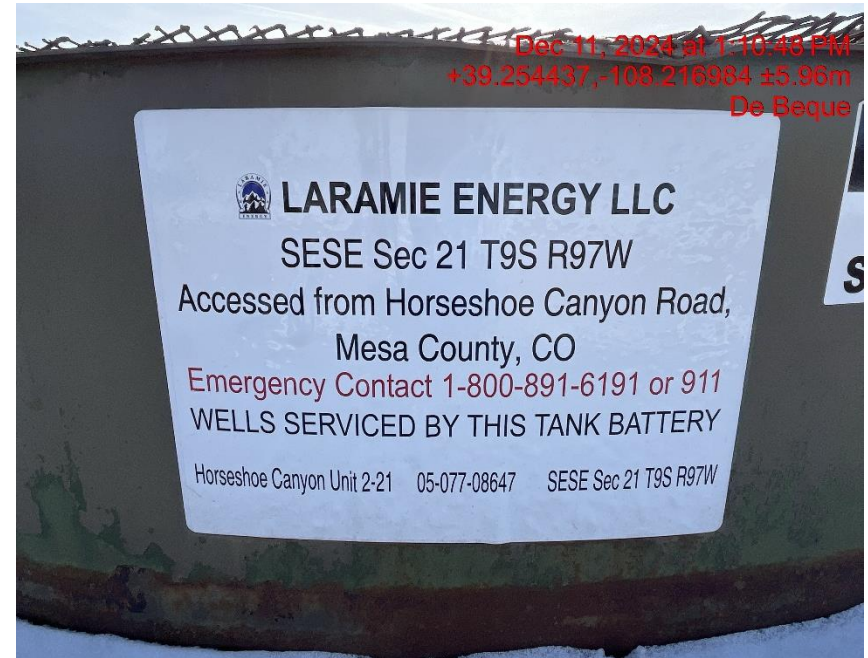


Photo # 0885 Location

## Inspection Photos

Location: LARAMIE ENERGY LLC Horseshoe Canyon/2-21 Pad

Location ID: 312617

Date: 12/11/2024



Photo # 0878 Location



Photo # 0882 Location

## Inspection Photos

Location: LARAMIE ENERGY LLC Horseshoe Canyon/2-21 Pad

Location ID: 312617

Date: 12/11/2024



Photo # 0896 Location



Photo # 0903 NW corner of location

## Inspection Photos

Location: LARAMIE ENERGY LLC Horseshoe Canyon/2-21 Pad

Location ID: 312617

Date: 12/11/2024



Photo # 0904 NE corner of location



Photo # 0905 SE corner of location

## Inspection Photos

Location: LARAMIE ENERGY LLC Horseshoe Canyon/2-21 Pad

Location ID: 312617

Date: 12/11/2024



Photo # 0906 SW corner of location



Photo # 0891 Wildlife hazard

## Inspection Photos

Location: LARAMIE ENERGY LLC Horseshoe Canyon/2-21 Pad

Location ID: 312617

Date: 12/11/2024



Photo # 0895 Wildlife hazard

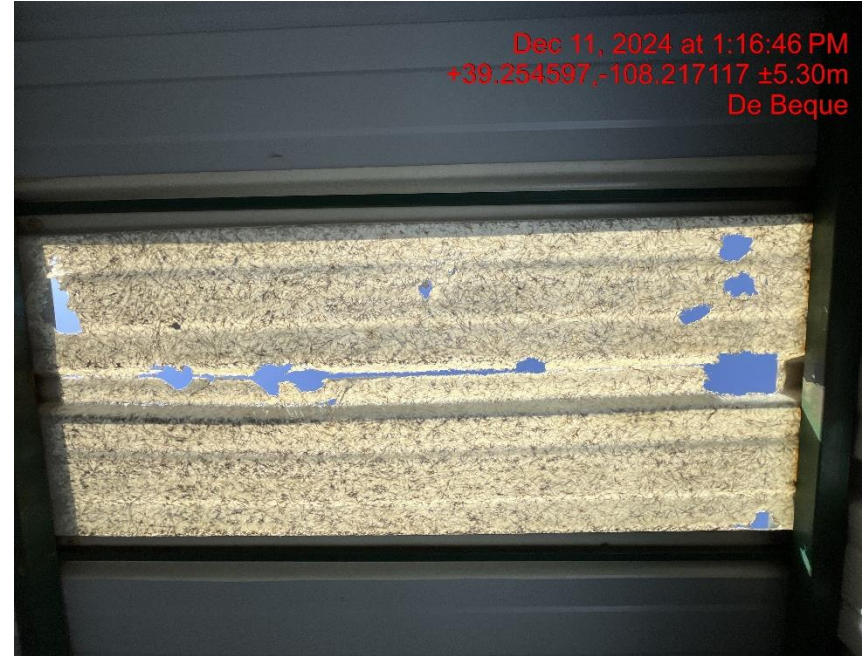


Photo # 0901 Wildlife hazard

## Inspection Photos

Location: LARAMIE ENERGY LLC Horseshoe Canyon/2-21 Pad

Location ID: 312617

Date: 12/11/2024



Photo # 0919 Tunnel erosion NW side of lease road near location in ditch/ditch needs maintenance, also is a wildlife/personnel safety hazard



Photo # 0922 Tunnel erosion NW side of lease road near location in ditch/ditch needs maintenance, also is a wildlife/personnel safety hazard

## Inspection Photos

Location: LARAMIE ENERGY LLC Horseshoe Canyon/2-21 Pad

Location ID: 312617

Date: 12/11/2024



Photo # 0924 Tunnel erosion NW side of lease road near location in ditch/ditch needs maintenance, also is a wildlife/personnel safety hazard

Photo # 0925 Tunnel erosion NW side of lease road near location in ditch/ditch needs maintenance, also is a wildlife/personnel safety hazard