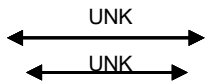




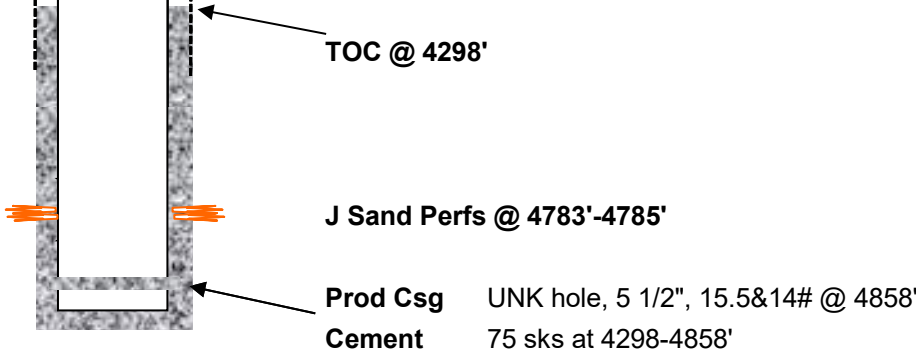
Impetro Resources, LLC

General Well Info			
Well Name:	Ward Unit #5	Field:	Abbott
Diagram Date:	12/17/2024	County:	Washington
Srf Location:	SWNE 10 2S54W	State:	Colorado
Spud:	1/29/1963	API #:	05-121-06092
GL Elev:	4732'		
Formation Tops			
Zone	Depth	Zone	Depth
D Sand	4728'	J Sand	4778'



Srf Csg                      UNK hole, 8 5/6", 24# @ 102'  
Cmt                         75 sks at 102' to Surface  
1st Csg                    UNK hole, 5 1/2", 15.5&14# @ 4858'  
Cmt                         75 sks at 4298-4800'

TOC Calculation		
15.5&14# cement	1.16	cuft/sx
slurry density	75	sx
Volume of cement	87	cuft
Piping	5.7737	ft/cuft
Cement height	502.3119	ft
Casing Set Depth	4800	ft
Calculated TOC	4298	ft



PBTD 4800' KB  
TD 4860' KB