

LEGEND:

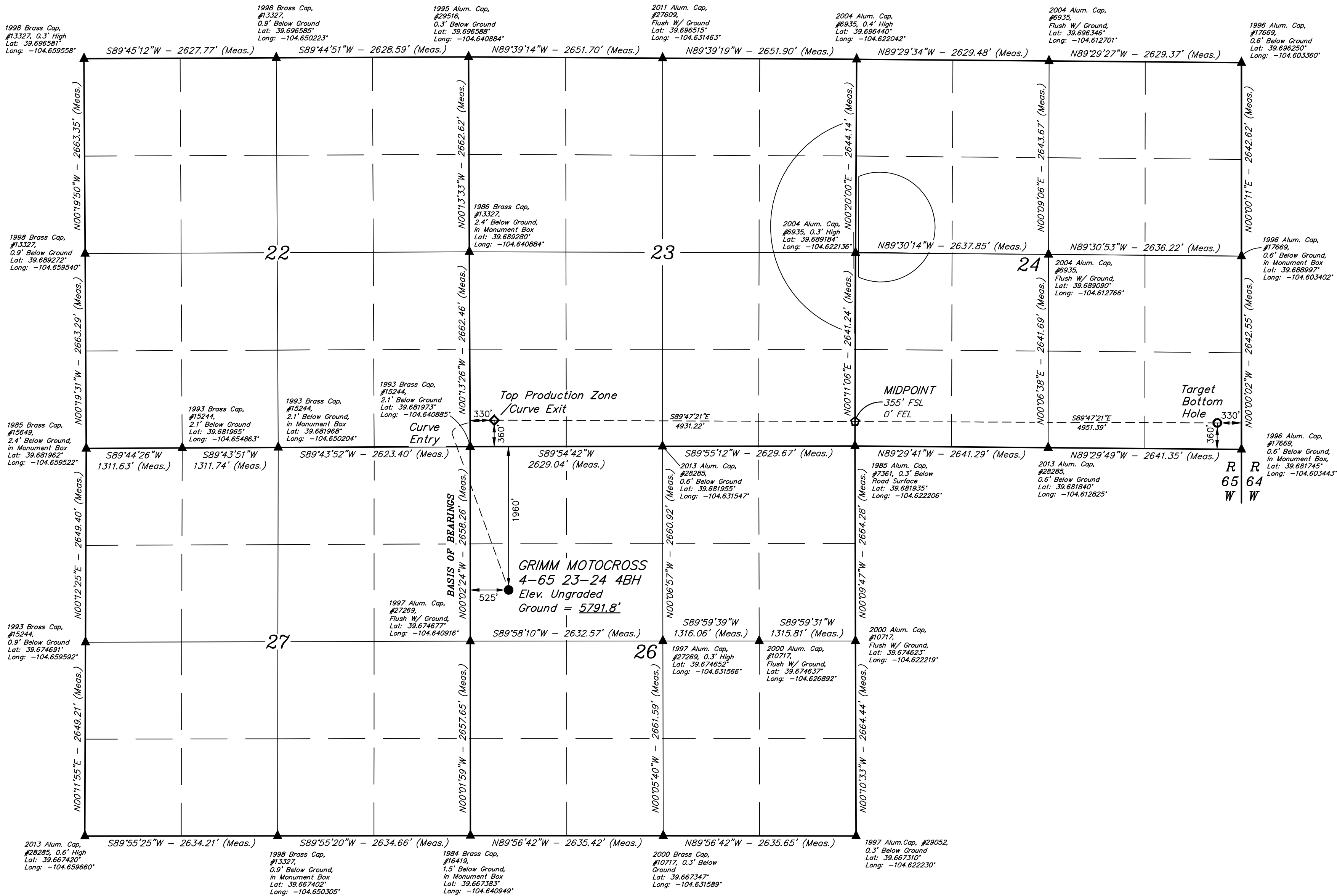
- = PROPOSED WELLHEAD.
- ◈ = PRODUCTION ZONE INTERVAL.
- = MIDPOINT.
- = TARGET BOTTOM HOLE.
- ▲ = SECTION CORNERS LOCATED. (NAD 83)

T4S, R65W, 6th P.M.

CRESTONE PEAK
RESOURCES OPERATING LLC

GRIMM MOTOCROSS 4-65 23-24 4BH
SW 1/4 NW 1/4, SECTION 26, T4S, R65W, 6th P.M.
ARAPAHOE COUNTY, COLORADO

BASIS OF ELEVATION
OPUS SOLUTION GENERATED NAVD 88



Drill path has been provided by
CRESTONE PEAK RESOURCES
OPERATING LLC.

NOTE:

Distances referenced
on plat to section lines
are perpendicular.

PDOP = 1.3

NAD 83 (SURFACE HOLE LOCATION)	NAD 83 (TOP PRODUCTION ZONE)	NAD 83 (MIDPOINT)	NAD 83 (TARGET BOTTOM HOLE)
LATITUDE = 39°40'35.72" (39.676589°)	LATITUDE = 39°40'58.65" (39.682959°)	LATITUDE = 39°40'58.27" (39.682853°)	LATITUDE = 39°40'57.88" (39.682745°)
LONGITUDE = -104°38'20.56" (-104.639044°)	LONGITUDE = -104°38'22.97" (-104.639713°)	LONGITUDE = -104°37'19.91" (-104.622197°)	LONGITUDE = -104°36'16.60" (-104.604610°)
STATE PLANE NAD 83 (CO. CENTRAL)	STATE PLANE NAD 83 (CO. CENTRAL)	STATE PLANE NAD 83 (CO. CENTRAL)	STATE PLANE NAD 83 (CO. CENTRAL)
N: 1672474.79' E: 3242335.25'	N: 1674793.06' E: 3242124.96'	N: 1674801.81' E: 3247054.92'	N: 1674810.58' E: 3252005.03'

REV: 01 02-07-24 K.C. (UPDATE MIDPOINT LABEL)

CERTIFICATE OF RECORDING
THIS IS TO CERTIFY THAT THE ABOVE DESCRIBED SURVEY WAS MADE IN ACCORDANCE WITH THE NOTES OF ACTUAL SURVEY'S MADE IN ACCORDANCE WITH MY SURVEYING LICENSE AND THAT THE SAME ARE TRUE AND CORRECT TO THE BEST OF MY KNOWLEDGE AND BELIEF.



UELS, LLC
Corporate Office * 85 South 200 East
Vernal, UT 84078 * (435) 789-1017

SURVEYED BY	ORION RICE	04-21-21	SCALE
DRAWN BY	M.D.	01-25-24	1" = 1000'

WELL LOCATION PLAT