

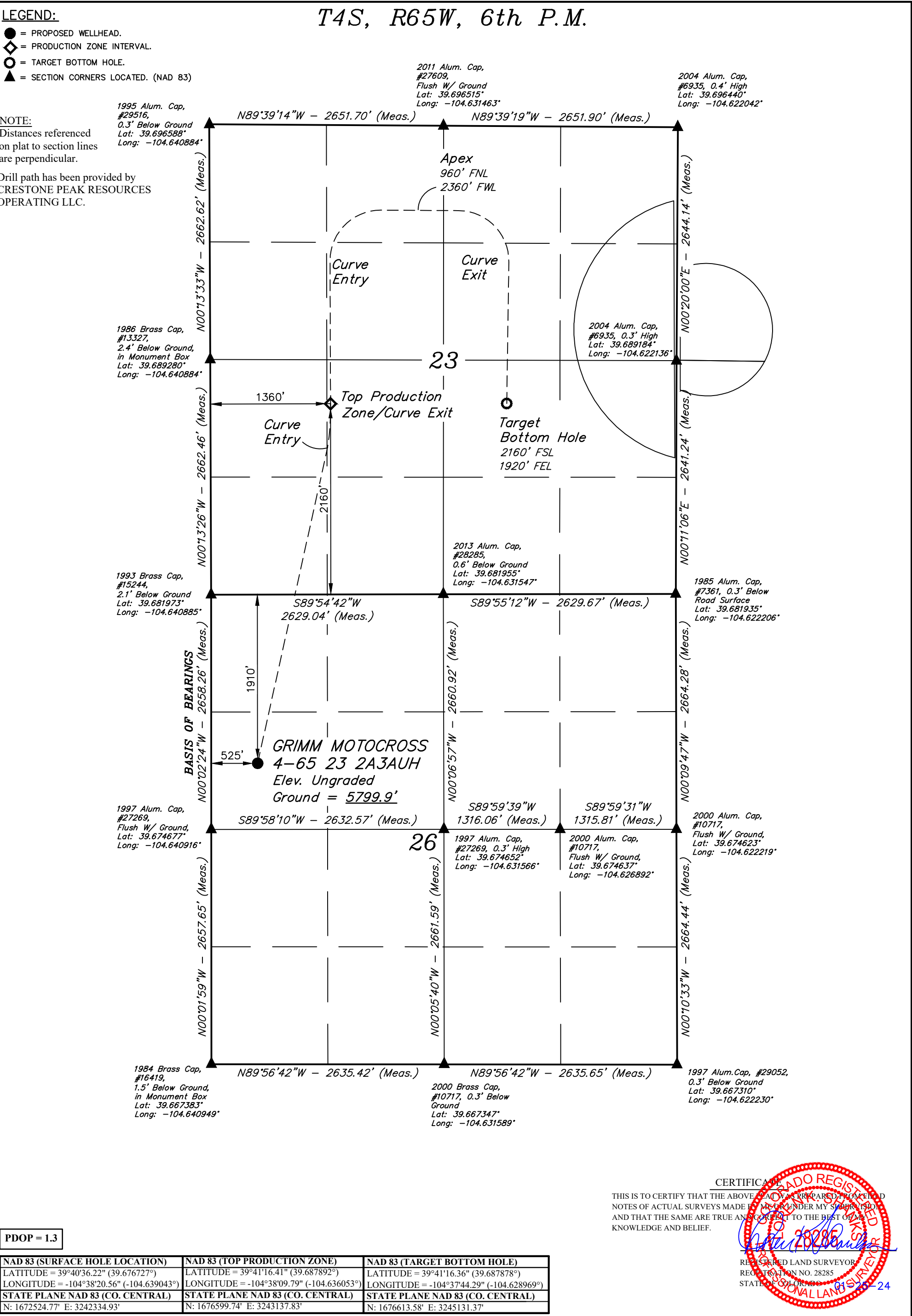
LEGEND:

- = PROPOSED WELLHEAD.
- ◆ = PRODUCTION ZONE INTERVAL.
- = TARGET BOTTOM HOLE.
- ▲ = SECTION CORNERS LOCATED. (NAD 83)

NOTE:

Distances referenced on plat to section lines are perpendicular.

Drill path has been provided by CRESTONE PEAK RESOURCES OPERATING LLC.



CERTIFICATION
THIS IS TO CERTIFY THAT THE ABOVE PLAT WAS PREPARED FROM FIELD NOTES OF ACTUAL SURVEYS MADE BY ME OR UNDER MY SUPERVISION, AND THAT THE SAME ARE TRUE AND CORRECT TO THE BEST OF MY KNOWLEDGE AND BELIEF.

REGISTERED LAND SURVEYOR
REGISTRATION NO. 28285
STATE OF COLORADO
01-25-24

BASIS OF ELEVATION
OPUS SOLUTION GENERATED NAVD 88



UELS, LLC
Corporate Office * 85 South 200 East
Vernal, UT 84078 * (435) 789-1017



**CRESTONE PEAK
RESOURCES OPERATING LLC**

GRIMM MOTOCROSS 4-65 23 2A3AUH
SW 1/4 NW 1/4, SECTION 26, T4S, R65W, 6th P.M.
ARAPAHOE COUNTY, COLORADO

SURVEYED BY	ORION RICE	04-21-21	SCALE
DRAWN BY	M.D.	01-25-24	1" = 1000'

WELL LOCATION PLAT