

LEGEND:

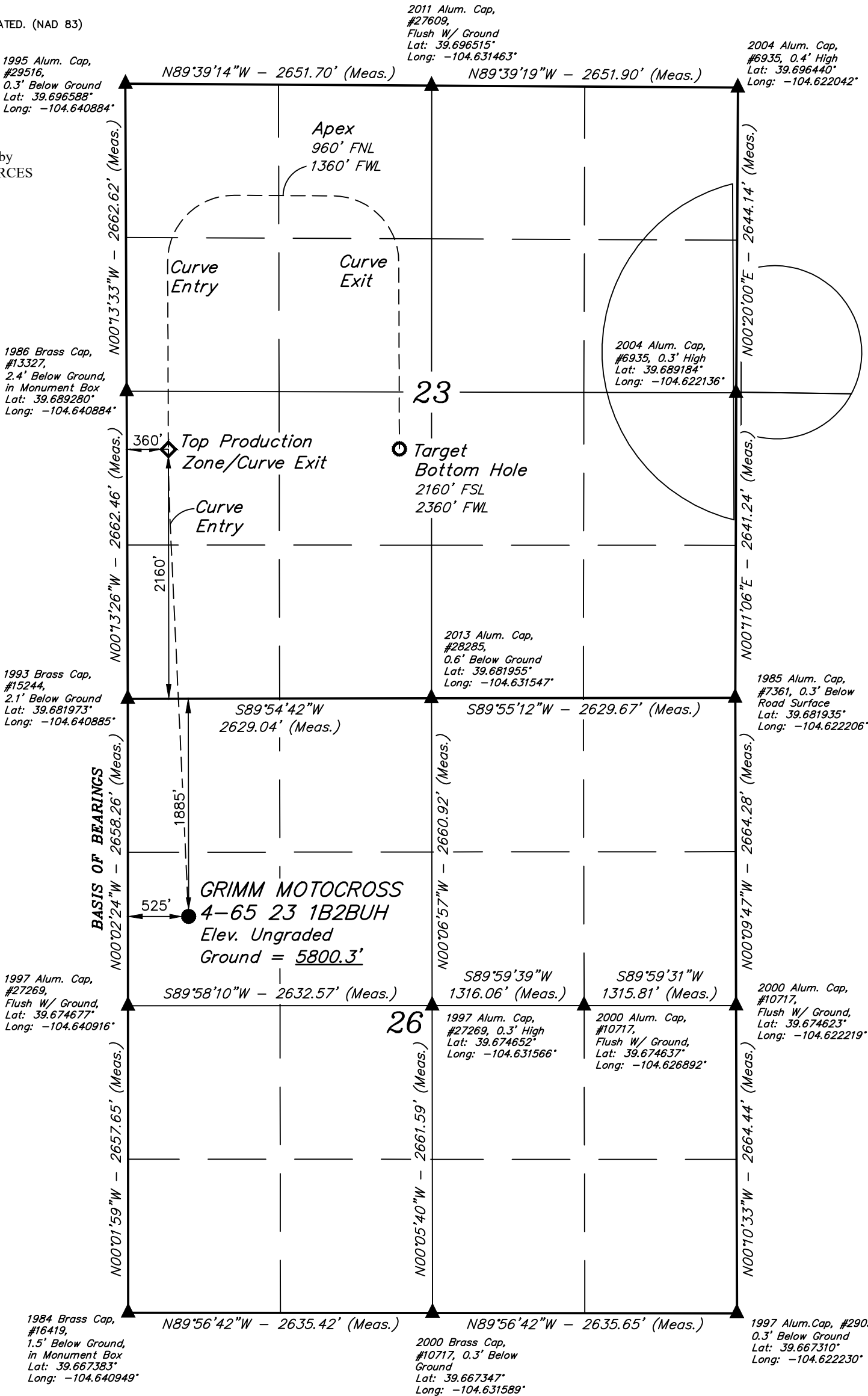
- = PROPOSED WELLHEAD.
- ◆ = PRODUCTION ZONE INTERVAL.
- = TARGET BOTTOM HOLE.
- ▲ = SECTION CORNERS LOCATED. (NAD 83)

NOTE:

Distances referenced on plat to section lines are perpendicular.

Drill path has been provided by CRESTONE PEAK RESOURCES OPERATING LLC.

T4S, R65W, 6th P.M.



PDOP = 1.3

NAD 83 (SURFACE HOLE LOCATION)	NAD 83 (TOP PRODUCTION ZONE)	NAD 83 (TARGET BOTTOM HOLE)
LATITUDE = 39°40'36.46" (39.676795°)	LATITUDE = 39°41'16.44" (39.687899°)	LATITUDE = 39°41'16.39" (39.687885°)
LONGITUDE = -104°38'20.55" (-104.639043°)	LONGITUDE = -104°38'22.58" (-104.639606°)	LONGITUDE = -104°37'57.00" (-104.632501°)
STATE PLANE NAD 83 (CO. CENTRAL)	STATE PLANE NAD 83 (CO. CENTRAL)	STATE PLANE NAD 83 (CO. CENTRAL)
N: 1672549.77' E: 3242334.77'	N: 1676592.74' E: 3242138.10'	N: 1676606.73' E: 3244137.55'

BASIS OF ELEVATION  
OPUS SOLUTION GENERATED NAVD 88



UELS, LLC  
Corporate Office \* 85 South 200 East  
Vernal, UT 84078 \* (435) 789-1017



CRESTONE PEAK  
RESOURCES OPERATING LLC

GRIMM MOTOCROSS 4-65 23 1B2BUH  
SW 1/4 NW 1/4, SECTION 26, T4S, R65W, 6th P.M.  
ARAPAHOE COUNTY, COLORADO

SURVEYED BY	ORION RICE	04-21-21	SCALE
DRAWN BY	M.D.	01-25-24	1" = 1000'

WELL LOCATION PLAT